



techhose

QUALITY CONNECTIONS

Hydraulics

Pneumatics
& Vacuum

Industrial

Compressed Air
& Ring Main

Process &
Instrumentation

Valves & Actuation

Hygienic, Wafer & Lugged Butterfly Valves

Hygienic Stainless Steel Butterfly Valves



Weld End

0708	OD	OD mm	Length mm
BUTVWE-1	1"	25.4	68
BUTVWE-112	1.1/2"	38.1	76
BUTVWE-2	2"	50.8	80
BUTVWE-212	2.1/2"	63.5	80
BUTVWE-3	3"	76.2	82
BUTVWE-4	4"	101.6	88

Tech Sheet 68172



Clamp End

0708	Size	Length mm
BUTVCE-1	1"	66
BUTVCE-112	1.1/2"	70
BUTVCE-2	2"	70

Tech Sheet 68172



RJT Male x Male

0708	Size	Thread	Length mm
BUTVRJT-1	1"	45.72 x 8T WHIT	68
BUTVRJT-112	1.1/2"	58.42 x 8T WHIT	76
BUTVRJT-2	2"	72.72 x 6T WHIT	80
BUTVRJT-212	2.5"	85.42 x 6T WHIT	80
BUTVRJT-3	3"	98.12 x 6T WHIT	82
BUTVRJT-4	4"	123.52 x 6T WHIT	100

Tech Sheet 68172

Stainless Steel Lever Type and Pull Type Handles are available on request

stainless steel

You might also need...

Hygienic Stainless Steel Tube & Pipe Fittings

...see pages 1320-1321



BUTTERFLY VALVES



Wafer Pattern Butterfly Valves

Features:

- To suit BS 10 Table D/E, PN6/10/16 and ANSI150 flanges



Working Temperature:

- 20°C to +120°C (WC, WS and WW)
- 0°C to +80°C (WB, WD and WT)
- 30°C to +180°C (WG, WH and WU)
- 20°C to +200°C (WI)



Maximum Working Pressure: 16 bar



Ductile Iron Body, Stainless Steel Disc

EPDM Liner, Lever Operated, (WRAS Approved Valve)	
0999	Flange Size
2014WW 08	1.1/2"
2014WW 09	2"
2014WW 10	2.1/2"
2014WW 11	3"
2014WW 12	4"
2014WW 13	5"
2014WW 14	6"
2014WW 16	8"
2014WW 18	10"

Tech Sheet 6060

EPDM Liner, Gearbox Operated, (WRAS Approved Valve)	
0999	Flange Size
2014WW 18G	10"
2014WW 20G	12"
2014WW 22G	14"
2014WW 24G	16"
2014WW 26G	18"
2014WW 28G	20"
2014WW 30G	24"

Tech Sheet 6060

Cast Iron Body, Stainless Steel Disc

NBR Liner, Lever Operated	
0999	Flange Size
2014WB 08	1.1/2"
2014WB 09	2"
2014WB 10	2.1/2"
2014WB 11	3"
2014WB 12	4"
2014WB 13	5"
2014WB 14	6"
2014WB 16	8"
2014WB 18	10"

Tech Sheet 14

NBR Liner, Gearbox Operated	
0999	Flange Size
2014WB 20G	12"
2014WB 22G	14"
2014WB 24G	16"
2014WB 26G	18"
2014WB 28G	20"
2014WB 30G	24"

Tech Sheet 14

Silicone Liner, Lever Operated	
0999	Flange Size
2014WG 09	2"
2014WG 10	2.1/2"
2014WG 11	3"
2014WG 12	4"
2014WG 13	5"
2014WG 14	6"
2014WG 16	8"
2014WG 18	10"

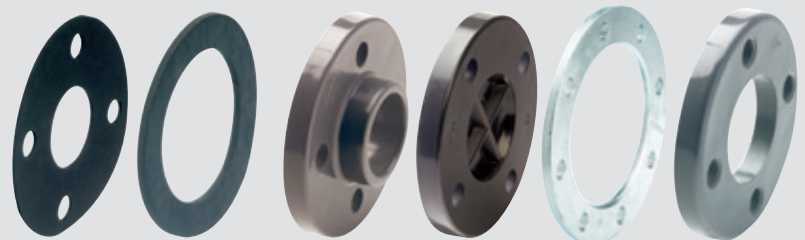
Tech Sheet 14

PTFE on Silicone, Lever Operated	
0999	Flange Size
2014WH 08	1.1/2"
2014WH 09	2"
2014WH 10	2.1/2"
2014WH 11	3"
2014WH 12	4"
2014WH 13	5"

Tech Sheet 14

PTFE on Silicone, Gearbox Operated	
0999	Flange Size
2014WH 14G	6"
2014WH 16G	8"
2014WH 18G	10"
2014WH 20G	12"

Tech Sheet 14



You may also need
PN16 Flanges & Flange Gaskets
see page 1099

Wafer Pattern Butterfly Valves

Cast Iron Body, Ductile Iron ENP Disc

EPDM Liner, Lever Operated	
0999	Flange Size
2014WC 09	2"
2014WC 10	2.1/2"
2014WC 11	3"
2014WC 12	4"
2014WC 13	5"
2014WC 14	6"
2014WC 16	8"
2014WC 18	10"
Tech Sheet 14	

NBR Liner, Lever Operated	
0999	Flange Size
2014WD 09	2"
2014WD 10	2.1/2"
2014WD 11	3"
2014WD 12	4"
2014WD 13	5"
2014WD 14	6"
2014WD 16	8"
2014WD 18	10"
Tech Sheet 14	

Carbon Steel Body, Stainless Steel Disc

FPM Liner, Lever Operated	
0999	Flange Size
2014WI 08	1.1/2"
2014WI 09	2"
2014WI 10	2.1/2"
2014WI 11	3"
2014WI 12	4"
2014WI 13	5"
2014WI 14	6"
2014WI 16	8"
Tech Sheet 14	

FPM Liner, Gearbox Operated	
0999	Flange Size
2014WI 18G	10"
2014WI 20G	12"
Tech Sheet 14	

Stainless Steel Body, Stainless Steel Disc

EPDM Liner, Lever Operated	
0999	Flange Size
2014WS 08	1.1/2"
2014WS 09	2"
2014WS 10	2.1/2"
2014WS 11	3"
2014WS 12	4"
2014WS 13	5"
2014WS 14	6"
2014WS 16	8"
2014WS 18	10"
Tech Sheet 14	

NBR Liner, Lever Operated	
0999	Flange Size
2014WT 08	1.1/2"
2014WT 09	2"
2014WT 10	2.1/2"
2014WT 11	3"
2014WT 12	4"
2014WT 13	5"
2014WT 14	6"
2014WT 16	8"
2014WT 18	10"
Tech Sheet 14	

Stainless Steel Body, Stainless Steel Disc

PTFE on Silicone Liner, Lever Operated	
0999	Flange Size
2014WU 09	2"
2014WU 10	2.1/2"
2014WU 11	3"
2014WU 12	4"
2014WU 13	5"
Tech Sheet 14	

PTFE on Silicone Liner, Gearbox Operated*	
0999	Flange Size
2014WU 14G	6"
2014WU 16G	8"
2014WU 18G	10"
2014WU 20G	12"
Tech Sheet 14	

EPDM Liner, Gearbox Operated*	
0999	Flange Size
2014WS 20G	12"
Tech Sheet 14	

*Gearbox is in cast iron material. Stainless steel options are available on request

Wafer Pattern Butterfly Valves

Features:

- To suit BS 10 Table D/E, PN6/10/16 and ANSI150 flanges
- 316 stainless steel coated with PTFE disc
- Suitable for highly corrosive applications

Working Temperature:
-40°C to +200°C



2014WP



2014WP-G

Ductile Iron Body, Fully Lined PTFE

0999	Flange Size	Max Pressure bar
2014WP 09	2"	16
2014WP 10	2.1/2"	16
2014WP 11	3"	16
2014WP 12	4"	16
2014WP 13	5"	16
Tech Sheet 6061		

0999	Flange Size	Max Pressure bar
2014WP 14G	6"	16
2014WP 16G	8"	16
2014WP 18G	10"	16
2014WP 20G	12"	10
Tech Sheet 6061		

BUTTERFLY VALVES



Lugged Pattern Butterfly Valves

Features:

- To suit PN16 flanges
- Lugged and tapped pattern valve design



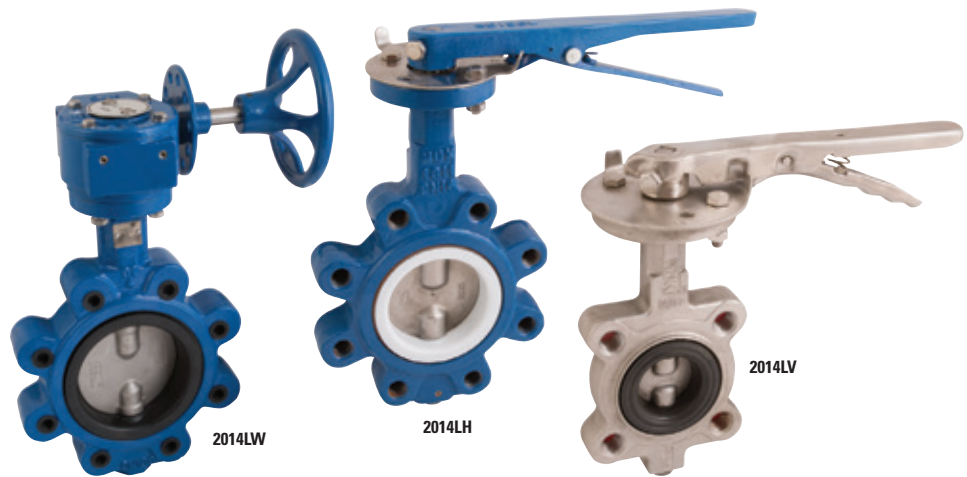
Working Temperature:

- 20°C to +120°C (2014LW)
- 0°C to +80°C (2014LB and 2014LD)
- 30°C to +180°C (2014LH)
- 20°C to +200°C (2014LI and 2014LV)



Maximum Working Pressure:

16 bar



7

Ductile Iron Body, Stainless Steel Disc

PN16, EPDM Liner, Lever Operated, (WRAS Approved Valve)	
0999	Flange Size
2014LW 08	1.1/2"
2014LW 09	2"
2014LW 10	2.1/2"
2014LW 11	3"
2014LW 12	4"
2014LW 13	5"
2014LW 14	6"
2014LW 16	8"
2014LW 18	10"

Tech Sheet 6063

PN16, EPDM Liner, Gearbox Operated, (WRAS Approved Valve)	
0999	Flange Size
2014LW 16G	8"
2014LW 18G	10"
2014LW 20G	12"
2014LW 22G	14"
2014LW 24G	16"
2014LW 26G	18"
2014LW 28G	20"
2014LW 30G	24"

Tech Sheet 6063

Ductile Iron Body, Ductile Iron ENP Disc

PN16, NBR Liner, Lever Operated	
0999	Flange Size
2014LD 09	2"
2014LD 10	2.1/2"
2014LD 11	3"
2014LD 12	4"
2014LD 13	5"
2014LD 14	6"
2014LD 16	8"
2014LD 18	10"

Tech Sheet 6064

PN16, NBR Liner, Lever Operated	
0999	Flange Size
2014LB 08Y	1.1/2"
2014LB 09Y	2"
2014LB 10Y	2.1/2"
2014LB 11Y	3"
2014LB 12Y	4"
2014LB 13Y	5"
2014LB 14Y	6"
2014LB 16Y	8"
2014LB 18Y	10"

Tech Sheet 6064

PN16, NBR Liner, Gearbox Operated	
0999	Flange Size
2014LB 20G	12"
2014LB 22G	14"
2014LB 24G	16"
2014LB 26G	18"
2014LB 28G	20"
2014LB 30G	24"

Tech Sheet 6064

All 2014LB lever operated valves will come with a yellow coloured lever

PN16, PTFE on Silicone Liner, Lever Operated	
0999	Flange Size
2014LH 08	1.1/2"
2014LH 09	2"
2014LH 10	2.1/2"
2014LH 11	3"
2014LH 12	4"
2014LH 13	5"

Tech Sheet 6064

Carbon Steel Body, Stainless Steel Disc

PN16, FPM Liner, Lever Operated	
0999	Flange Size
2014LI 08	1.1/2"
2014LI 09	2"
2014LI 10	2.1/2"
2014LI 11	3"
2014LI 12	4"
2014LI 13	5"
2014LI 14	6"
2014LI 16	8"

Tech Sheet 6064

Stainless Steel Body, Stainless Steel Disc

PN16, FPM Liner, Lever Operated	
0999	Flange Size
2014LV 08	1.1/2"
2014LV 09	2"
2014LV 10	2.1/2"
2014LV 11	3"
2014LV 12	4"
2014LV 13	5"
2014LV 14	6"
2014LV 16	8"

Tech Sheet 6064



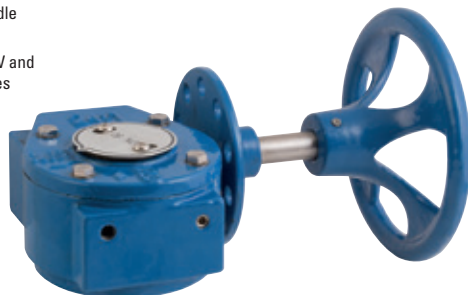
You might also need...
Maintenance Paint
 ...see pages 1561-1567



Butterfly Valve Accessories

Features:

- Cast iron housing
- Stainless steel spindle
- Lockable
- To suit FT Pro 2014W and 2014L butterfly valves



Gearbox for Butterfly Valves

0999	Size	DN
2014GB 09	2"	50
2014GB 10	2.1/2"	65
2014GB 11	3"	80
2014GB 12	4"	100
2014GB 13	5"	125
2014GB 14	6"	150
2014GB 16	8"	200
2014GB 18	10"	250
2014GB 20	12"	300
2014GB 22	14"	350

Tech Sheet 6067

Features:

- Add-on price for kit and switch box
- Aluminium IP67 enclosure
- Beacon indicator
- 2 x SPDT 250V DC/AC V3 micro switches
- 2 x M20 cable entries
- Stainless steel bracket

Can be used with any ISO top valve. The valve stem will require some machining at an additional cost. Contact sales for more information.



Switch Box Kit for Lever Operated Butterfly Valve

0921	Size	DN
2014LSB 08	1.1/2"	40
2014LSB 09	2"	50
2014LSB 10	2.1/2"	65
2014LSB 11	3"	80
2014LSB 12	4"	100
2014LSB 13	5"	125
2014LSB 14	6"	150
2014LSB 16	8"	200
2014LSB 18	10"	250

Tech Sheet 6068

Chain Wheel option available on request. Contact Sales for more information



You might also need...
Flange Bolt Kits
 ...see page 1384

