



# techhose

QUALITY CONNECTIONS

Hydraulics

Pneumatics  
& Vacuum

Industrial

Compressed Air  
& Ring Main

Process &  
Instrumentation

---

## Valves & Actuation

---

Check Valves

## CHECK VALVES



## Brass Spring Check Valves

- Can be installed in any position
- Minimum opening pressure 0.5 psi

**Working Temperature:**  
-20°C to +100°C

**Maximum Working Pressure:** 16 bar



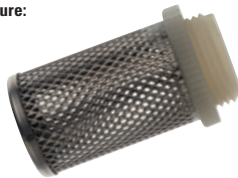
## Type CV100, BSPP

| 0442      | Thread |
|-----------|--------|
| CV100-38  | 3/8"   |
| CV100-12  | 1/2"   |
| CV100-34  | 3/4"   |
| CV100-1   | 1"     |
| CV100-114 | 1.1/4" |
| CV100-112 | 1.1/2" |
| CV100-2   | 2"     |

Tech Sheet 10025

## Strainer Basket for Check Valves

**Working Temperature:**  
-20°C to +100°C



## Type CV105, Stainless Steel Filters, BSPP

| 0445      | Thread | Length mm | Height mm | Max Pressure Bar |
|-----------|--------|-----------|-----------|------------------|
| CV105-38  | 3/8"   | 44        | 22        | 25               |
| CV105-12  | 1/2"   | 47        | 28        | 25               |
| CV105-34  | 3/4"   | 57        | 33        | 25               |
| CV105-1   | 1"     | 69        | 42        | 25               |
| CV105-114 | 1.1/4" | 75        | 50        | 18               |
| CV105-112 | 1.1/2" | 84        | 55        | 18               |

Tech Sheet 10039

For more sizes  
**Strainer Basket for  
Check Valves**  
see page 962



## Brass Swing Check Valves

## Features:

- Installation in a horizontal position only
- Suitable for domestic water services, heating and air-conditioning plants and compressed air systems

**Working Temperature:**  
-20°C to +90°C

**Maximum Working Pressure:** 20 bar



## Rubber Seat, BSPP

| 0910      | Thread |
|-----------|--------|
| CV12R-12  | 1/2"   |
| CV12R-34  | 3/4"   |
| CV12R-1   | 1"     |
| CV12R-114 | 1.1/4" |
| CV12R-112 | 1.1/2" |
| CV12R-2   | 2"     |

Tech Sheet 6126

## Metal Seat, BSPP

| 0910      | Thread |
|-----------|--------|
| CV12M-12  | 1/2"   |
| CV12M-34  | 3/4"   |
| CV12M-1   | 1"     |
| CV12M-114 | 1.1/4" |
| CV12M-112 | 1.1/2" |
| CV12M-2   | 2"     |

Tech Sheet 6126

## Bronze Swing Check Valves

**Working Temperature:**  
-10°C to +232°C

**Maximum Working Pressure:** 20 bar



## PN20 Swing Check Valve, BSPT

| 0205        | Thread |
|-------------|--------|
| CVBZ384-12  | 1/2"   |
| CVBZ384-34  | 3/4"   |
| CVBZ384-1   | 1"     |
| CVBZ384-114 | 1.1/4" |
| CVBZ384-112 | 1.1/2" |
| CVBZ384-2   | 2"     |

Tech Sheet 1822

## Brass Double Check Valves

## Features:

- Conforms to BS EN 13959:2004
- Can be installed in any position
- Suitable for potable water applications, heating and air-conditioning plants

**Working Temperature:**  
0°C to +85°C

**Maximum Working Pressure:** 16 bar



## Metal Seat, BSPP

| 0913       | Thread |
|------------|--------|
| HUKDCV-12  | 1/2"   |
| HUKDCV-34  | 3/4"   |
| HUKDCV-1   | 1"     |
| HUKDCV-114 | 1.1/4" |
| HUKDCV-112 | 1.1/2" |
| HUKDCV-2   | 2"     |

Tech Sheet 6127

## PVC Check Valves

**Working Temperature:**  
0°C to +60°C  
0°C to +20°C (at 16 bar)

**Maximum Working Pressure:**  
16 bar



## Double Union, Spring Assisted, BSPP

| 0118      | Thread |
|-----------|--------|
| 2020-0481 | 1/2"   |
| 2020-0499 | 3/4"   |
| 2020-0507 | 1"     |
| 2020-0515 | 1.1/4" |
| 2020-0523 | 1.1/2" |
| 2020-0531 | 2"     |

Tech Sheet 10323

## Stainless Steel Spring Check Valves

### Features:

- Installation in a horizontal position only

 **Working Temperature:**  
-25°C to +180°C

 **Maximum Working Pressure:**  
200 psi (13.8 bar)




### Swing, BSPP

| 0900     | Thread |
|----------|--------|
| 2030-12  | 1/2"   |
| 2030-34  | 3/4"   |
| 2030-1   | 1"     |
| 2030-114 | 1.1/4" |
| 2030-112 | 1.1/2" |
| 2030-2   | 2"     |
| 2030-212 | 2.1/2" |
| 2030-3   | 3"     |

Tech Sheet 6098

### Features:

- Can be installed in any position

 **Working Temperature:**  
-25°C to +180°C



### Spring Assisted, BSPP


| 0900     | Thread | Max Pressure bar |
|----------|--------|------------------|
| 2413-14  | 1/4"   | 83               |
| 2413-38  | 3/8"   | 83               |
| 2413-12  | 1/2"   | 83               |
| 2413-34  | 3/4"   | 83               |
| 2413-1   | 1"     | 83               |
| 2413-114 | 1.1/4" | 69               |
| 2413-112 | 1.1/2" | 69               |
| 2413-2   | 2"     | 63               |

Tech Sheet 6093

### Features:

- Can be mounted between PN16/25/40 and ANSI150 flanges
- Can be installed in any position
- Suitable for saturated steam up to 10 bar

 **Working Temperature:**  
-20°C to +180°C

 **Maximum Working Pressure:**  
40 bar



### Spring Assisted Wafer Pattern

| 0933    | Flange Size |
|---------|-------------|
| 2026 04 | 1/2"        |
| 2026 05 | 3/4"        |
| 2026 06 | 1"          |
| 2026 07 | 1.1/4"      |
| 2026 08 | 1.1/2"      |
| 2026 09 | 2"          |
| 2026 10 | 2.1/2"      |
| 2026 11 | 3"          |
| 2026 12 | 4"          |

Tech Sheet 6095

### Features:

- Can be installed in any position
- Suitable for saturated steam up to 10 bar

 **Working Temperature:**  
-20°C to +180°C

 **Maximum Working Pressure:**  
40 bar



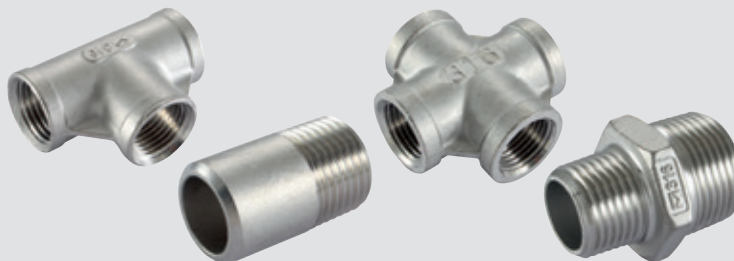
### 3 Piece, Spring Assisted, BSPP

| 0933      | Thread |
|-----------|--------|
| 2026C-12  | 1/2"   |
| 2026C-34  | 3/4"   |
| 2026C-1   | 1"     |
| 2026C-114 | 1.1/4" |
| 2026C-112 | 1.1/2" |
| 2026C-2   | 2"     |
| 2026C-212 | 2.1/2" |
| 2026C-3   | 3"     |
| 2026C-4   | 4"     |

Tech Sheet 6097



stainless steel



You might also need...  
**Stainless Steel 150LB Fittings**  
...see pages 1181-1273

# CHECK VALVES



## Brass Check Valves

- Suitable for domestic water services, heating and air-conditioning plants, compressed air systems. Suited for installation in any position: vertical, horizontal or diagonal.

° Working Temperature:  
-20°C to +100°C



### Type 100 EUROPA, Female, BSPP

| 0089      | Thread | Max Pressure bar |
|-----------|--------|------------------|
| IT100-38  | 3/8"   | 25               |
| IT100-12  | 1/2"   | 25               |
| IT100-34  | 3/4"   | 25               |
| IT100-1   | 1"     | 25               |
| IT100-114 | 1.1/4" | 18               |
| IT100-112 | 1.1/2" | 18               |
| IT100-2   | 2"     | 18               |
| IT100-212 | 2.1/2" | 12               |
| IT100-3   | 3"     | 12               |
| IT100-4   | 4"     | 12               |

Tech Sheet 6124

° Working Temperature:  
-20°C to +100°C



### Type 103 YORK, Female, BSPP

| 0089      | Thread | Max Pressure Bar |
|-----------|--------|------------------|
| IT103-38  | 3/8"   | 12               |
| IT103-12  | 1/2"   | 12               |
| IT103-34  | 3/4"   | 12               |
| IT103-1   | 1"     | 12               |
| IT103-114 | 1.1/4" | 10               |
| IT103-112 | 1.1/2" | 10               |
| IT103-2   | 2"     | 10               |
| IT103-212 | 2.1/2" | 8                |
| IT103-3   | 3"     | 8                |
| IT103-4   | 4"     | 8                |

Tech Sheet 1837

° Working Temperature:  
-20°C to +100°C



### Type 101 BLOCK, Female, BSPP

| 0089      | Thread | Max Pressure Bar |
|-----------|--------|------------------|
| IT101-12  | 1/2"   | 12               |
| IT101-34  | 3/4"   | 12               |
| IT101-1   | 1"     | 12               |
| IT101-114 | 1.1/4" | 10               |
| IT101-112 | 1.1/2" | 10               |
| IT101-2   | 2"     | 10               |

Tech Sheet 1982

° Working Temperature:  
-20°C to +150°C (air & fluid hydrocarbons);  
-20°C to +100°C (water)

- Also suitable for use with gasoline and fuels in general.



### Type 104 ROMA, Female, BSPP

| 0089      | Thread | Max Pressure bar |
|-----------|--------|------------------|
| IT104-38  | 3/8"   | 25               |
| IT104-12  | 1/2"   | 25               |
| IT104-34  | 3/4"   | 25               |
| IT104-1   | 1"     | 25               |
| IT104-114 | 1.1/4" | 18               |
| IT104-112 | 1.1/2" | 18               |
| IT104-2   | 2"     | 18               |

Tech Sheet 1840

° Working Temperature:  
-20°C to +100°C

- To suit Type 100, 101, 103 and 104



### Strainer, Stainless Steel with Polymer Thread, BSPP

| 0089      | Thread |
|-----------|--------|
| IT102-38  | 3/8"   |
| IT102-12  | 1/2"   |
| IT102-34  | 3/4"   |
| IT102-1   | 1"     |
| IT102-114 | 1.1/4" |
| IT102-112 | 1.1/2" |
| IT102-2   | 2"     |
| IT102-212 | 2.1/2" |
| IT102-3   | 3"     |
| IT102-4   | 4"     |

Tech Sheet 6125

° Working Temperature:  
-20°C to +100°C

- To suit Type 100, 101, 103 and 104



### Strainer, Polymer, BSPP

| 0089     | Thread |
|----------|--------|
| IT107-12 | 1/2"   |
| IT107-34 | 3/4"   |
| IT107-1  | 1"     |
| IT107-2  | 2"     |

Tech Sheet 1983

° Working Temperature:  
0°C to +90°C

- Installation in a horizontal position only



### Type 130, Swing Check, Soft Seat, BSPP

| 0089      | Thread | Max. Pressure bar |
|-----------|--------|-------------------|
| CV130-38  | 3/8"   | 16                |
| CV130-12  | 1/2"   | 16                |
| CV130-34  | 3/4"   | 16                |
| CV130-1   | 1"     | 12                |
| CV130-114 | 1.1/4" | 10                |
| CV130-112 | 1.1/2" | 10                |
| CV130-2   | 2"     | 10                |

Tech Sheet 10026

### Type 130, Swing Check, Metal Seat, BSPP

| 0089        | Thread | Max. Pressure bar |
|-------------|--------|-------------------|
| IT1300-12M  | 1/2"   | 16                |
| IT1300-34M  | 3/4"   | 16                |
| IT1300-1M   | 1"     | 12                |
| IT1300-114M | 1.1/4" | 10                |
| IT1300-112M | 1.1/2" | 10                |
| IT1300-2M   | 2"     | 10                |
| CV130-212   | 2.1/2" | 8                 |
| CV130-3     | 3"     | 8                 |
| CV130-4     | 4"     | 8                 |

Tech Sheet 10026

## Foot Valves, Brass

- Suitable for domestic water services, heating and air-conditioning plants, compressed air systems. Suited for installation in any position: vertical, horizontal or diagonal. Stainless steel strainer with polymer thread. Filtration up to 2": 1200µm, 2.1/2" onwards: 1700µm

° Working Temperature:  
-20°C to +100°C



### Type 108 YORK, Female, BSPP

| 0089      | Thread | Max Pressure Bar |
|-----------|--------|------------------|
| IT108-38  | 3/8"   | 12               |
| IT108-12  | 1/2"   | 12               |
| IT108-34  | 3/4"   | 12               |
| IT108-1   | 1"     | 12               |
| IT108-114 | 1.1/4" | 10               |
| IT108-112 | 1.1/2" | 10               |
| IT108-2   | 2"     | 10               |
| IT108-212 | 2.1/2" | 6                |
| IT108-3   | 3"     | 6                |
| IT108-4   | 4"     | 6                |

Tech Sheet 10197

# CHECK VALVES

stainless  
steel



## Stainless Steel Check Valves

Working Temperature:  
-26°C to +190°C

Cracking Pressure:  
0.35 psi

Maximum Working Pressure:  
414 bar

Seal: Viton



### 6,000 psi, Female, NPT

| 0292         | Thread |
|--------------|--------|
| PCV-02-SS-FF | 1/8"   |
| PCV-04-SS-FF | 1/4"   |
| PCV-06-SS-FF | 3/8"   |
| PCV-08-SS-FF | 1/2"   |
| PCV-12-SS-FF | 3/4"   |
| PCV-16-SS-FF | 1"     |

Tech Sheet 10507

# CHECK VALVES

stainless  
steel



## Stainless Steel Check Valves

### Features:

- Installation in a horizontal position only
- Suitable for saturated steam up to 10 bar

Working Temperature:  
-20°C to +200°C

### Flanged PN16

| 0982        | Flange Size | Max Pressure bar |
|-------------|-------------|------------------|
| 2024SL16 06 | 1"          | 16               |
| 2024SL16 08 | 1.1/2"      | 16               |
| 2024SL16 09 | 2"          | 16               |
| 2024SL16 10 | 2.1/2"      | 16               |
| 2024SL16 11 | 3"          | 16               |
| 2024SL16 12 | 4"          | 16               |
| 2024SL16 14 | 6"          | 16               |

Tech Sheet 1875

### Flanged ANSI150

| 0982         | Flange Size | Max Pressure bar |
|--------------|-------------|------------------|
| 2024SL150 06 | 1"          | 19.6             |
| 2024SL150 08 | 1.1/2"      | 19.6             |
| 2024SL150 09 | 2"          | 19.6             |
| 2024SL150 11 | 3"          | 19.6             |
| 2024SL150 12 | 4"          | 19.6             |
| 2024SL150 14 | 6"          | 19.6             |

Tech Sheet 1875

Other sizes on request.



Cannot see the product you're looking for? Contact us. More often than not, we can acquire that product.

# CHECK VALVES

stainless  
steel

GENEBRE


## Cromax Spring Check Valves

**Body:** 304SS or 316SS

**Seal:** Viton

Other sizes on request.

 **Working Temperature:**  
-20°C to +150°C

 **Maximum Working Pressure:** 16 bar



### 304 Stainless Steel, BSPP

| 0902     | Thread |
|----------|--------|
| 2440-14  | 1/4"   |
| 2440-38  | 3/8"   |
| 2440-12  | 1/2"   |
| 2440-34  | 3/4"   |
| 2440-1   | 1"     |
| 2440-114 | 1.1/4" |
| 2440-112 | 1.1/2" |
| 2440-2   | 2"     |

Tech Sheet 1871

### 316 Stainless Steel, BSPP

| 0902     | Thread |
|----------|--------|
| 2445-14  | 1/4"   |
| 2445-38  | 3/8"   |
| 2445-12  | 1/2"   |
| 2445-34  | 3/4"   |
| 2445-1   | 1"     |
| 2445-114 | 1.1/4" |
| 2445-112 | 1.1/2" |
| 2445-2   | 2"     |

Tech Sheet 1871

## Basket for Check Valves

**Features:**

- BSPP threads
- Mesh size 1mm up to 2". 1.9mm for 2.1/2" upwards

 **Working Temperature:**  
-20°C to +150°C

 **Maximum Working Pressure:**  
16 bar



### Strainer Basket for Cromax Spring Check Valve


| 0902     | Thread | DN  |
|----------|--------|-----|
| 2447-12  | 1/2"   | 15  |
| 2447-34  | 3/4"   | 20  |
| 2447-1   | 1"     | 25  |
| 2447-114 | 1.1/4" | 32  |
| 2447-112 | 1.1/2" | 40  |
| 2447-2   | 2"     | 50  |
| 2447-212 | 2.1/2" | 65  |
| 2447-3   | 3"     | 80  |
| 2447-4   | 4"     | 100 |

Tech Sheet 6094

## Wafer Check Valves

**Seal:** Viton

- Can be mounted between PN10/16 and ANSI150 flange

 **Working Temperature:**  
-20°C to +180°C

 **Maximum Working Pressure:**  
16 bar



### Swing Check

| 0902    | Flange Size |
|---------|-------------|
| 2406 08 | 1.1/2"      |
| 2406 09 | 2"          |
| 2406 10 | 2.1/2"      |
| 2406 11 | 3"          |
| 2406 12 | 4"          |
| 2406 13 | 5"          |
| 2406 14 | 6"          |
| 2406 16 | 8"          |
| 2406 18 | 10"         |
| 2406 20 | 12"         |

Tech Sheet 1878

**Features:**

- Can be mounted between PN25 and ANSI150 flange
- Can be installed in any position

 **Working Temperature:**  
-20°C to +180°C

 **Maximum Working Pressure:**  
25 bar



### Dual Plate, Spring Assisted, Swing Check

| 0902    | Flange Size |
|---------|-------------|
| 2402 09 | 2"          |
| 2402 10 | 2.1/2"      |
| 2402 11 | 3"          |
| 2402 12 | 4"          |
| 2402 13 | 5"          |
| 2402 14 | 6"          |
| 2402 16 | 8"          |

Tech Sheet 6096

# CHECK VALVES



## Stainless Steel Check Valves

### Features:

- Reduced bore
- ATEX approved
- NACE MR0175
- Conforms to BS 5352

Working Temperature:  
-50°C to +450°C

Maximum Working Pressure: 110 bar



### Class 800, NPT

| 0905      | Thread |
|-----------|--------|
| C800S-12  | 1/2"   |
| C800S-34  | 3/4"   |
| C800S-1   | 1"     |
| C800S-114 | 1.1/4" |
| C800S-112 | 1.1/2" |
| C800S-2   | 2"     |

Tech Sheet 6099

### Class 800, Socket Weld

| 0905       | Thread |
|------------|--------|
| C800S-12S  | 1/2"   |
| C800S-34S  | 3/4"   |
| C800S-1S   | 1"     |
| C800S-114S | 1.1/4" |
| C800S-112S | 1.1/2" |
| C800S-2S   | 2"     |

Tech Sheet 6099

## Carbon Steel Check Valves

### Features:

- Reduced bore
- ATEX approved
- NACE MR0175
- Conforms to BS 5352

Working Temperature:  
-29°C to +425°C

Maximum Working Pressure: 138 bar



### Class 800, NPT

| 0905      | Thread |
|-----------|--------|
| C800C-12  | 1/2"   |
| C800C-34  | 3/4"   |
| C800C-1   | 1"     |
| C800C-114 | 1.1/4" |
| C800C-112 | 1.1/2" |
| C800C-2   | 2"     |

Tech Sheet 6099

### Class 800, Socket Weld

| 0905       | Thread |
|------------|--------|
| C800C-12S  | 1/2"   |
| C800C-34S  | 3/4"   |
| C800C-1S   | 1"     |
| C800C-114S | 1.1/4" |
| C800C-112S | 1.1/2" |
| C800C-2S   | 2"     |

Tech Sheet 6099

# CHECK VALVES



## Cast Iron Check Valves

### Features:

- Can be mounted between PN16 and ANSI150 flanges
- WRAS approved
- Can be installed in any position

Working Temperature:  
0°C to +85°C

Maximum Working Pressure: 16 bar



### Dual Plate

| 0909       | Flange Size |
|------------|-------------|
| HUKDPC 09W | 2"          |
| HUKDPC 10W | 2.1/2"      |
| HUKDPC 11W | 3"          |
| HUKDPC 12W | 4"          |
| HUKDPC 13W | 5"          |
| HUKDPC 14W | 6"          |
| HUKDPC 16W | 8"          |
| HUKDPC 18W | 10"         |
| HUKDPC 20W | 12"         |

Tech Sheet 6116

### Features:

- Face to face BS 5153, EN 558-1
- Conforms to BS EN 12334
- Can be installed with vertical upwards flow or horizontal flow

Working Temperature:  
-10°C to +120°C at 16 bar  
-10°C to +230°C at 11.8 bar

Maximum Working Pressure: 16 bar



### Flanged PN16, Metal Seat, Swing Check

| 0927   | Flange Size | DN  |
|--------|-------------|-----|
| E03 09 | 2"          | 50  |
| E03 10 | 2.1/2"      | 65  |
| E03 11 | 3"          | 80  |
| E03 12 | 4"          | 100 |
| E03 14 | 6"          | 150 |
| E03 16 | 8"          | 200 |

Tech Sheet 6123

## Ductile Iron Check Valves

### Features:

- Face to face conforms to BS EN 558-1 (series 10)
- Manufactured to the BS EN 16767:2016 standard for industrial check valves, previously BS 5153
- Can be installed with vertical upwards flow or horizontal flow

Working Temperature:  
0°C to +80°C

Maximum Working Pressure: 16 bar



### Flanged PN16, Soft Seat, Swing Check

| 0909        | Flange Size | DN  |
|-------------|-------------|-----|
| HUK5153W 09 | 2"          | 50  |
| HUK5153W 10 | 2.1/2"      | 65  |
| HUK5153W 11 | 3"          | 80  |
| HUK5153W 12 | 4"          | 100 |
| HUK5153W 14 | 6"          | 150 |
| HUK5153W 16 | 8"          | 200 |
| HUK5153W 18 | 10"         | 250 |
| HUK5153W 20 | 12"         | 300 |

Tech Sheet 6122

# CHECK VALVES

## Cast Iron Check Valves

### Features:

- Can be installed in any position

**Working Temperature:**  
-10°C to +100°C

**Maximum Working Pressure:**  
16 bar



### Flanged PN16, Spring Disc

| 0918    | Flange Size | DN  |
|---------|-------------|-----|
| 2450 09 | 2"          | 50  |
| 2450 10 | 2.1/2"      | 65  |
| 2450 11 | 3"          | 80  |
| 2450 12 | 4"          | 100 |
| 2450 13 | 5"          | 125 |
| 2450 14 | 6"          | 150 |
| 2450 16 | 8"          | 200 |

Tech Sheet 6119

### Features:

- Can be mounted between PN10/16 and ANSI150 flange
- Can be installed in any position

**Working Temperature:**  
-10°C to +100°C

**Maximum Working Pressure:**  
16 bar



### Dual Plate

| 0918    | Flange Size | DN  |
|---------|-------------|-----|
| 2401 09 | 2"          | 50  |
| 2401 10 | 2.1/2"      | 65  |
| 2401 11 | 3"          | 80  |
| 2401 12 | 4"          | 100 |
| 2401 13 | 5"          | 125 |
| 2401 14 | 6"          | 150 |
| 2401 16 | 8"          | 200 |
| 2401 18 | 10"         | 250 |
| 2401 20 | 12"         | 300 |

Tech Sheet 6117

### Features:

- Can be installed with vertical upwards flow or horizontal fl

**Working Temperature:**  
-10°C to +80°C

**Maximum Working Pressure:**  
16 bar



### Flanged PN16, Ball Check

| 0918    | Flange Size | DN  |
|---------|-------------|-----|
| 2453 09 | 2"          | 50  |
| 2453 10 | 2.1/2"      | 65  |
| 2453 11 | 3"          | 80  |
| 2453 12 | 4"          | 100 |
| 2453 13 | 5"          | 125 |
| 2453 14 | 6"          | 150 |
| 2453 16 | 8"          | 200 |
| 2453 18 | 10"         | 250 |

Tech Sheet 6121

## Basket for Check Valves

### Features:

- To suit PN16 flanged end
- Zinc-Plated Steel

**Working Temperature:**  
-10°C to +100°C

**Maximum Working Pressure:**  
16 bar



## Basket for 2450 Check Valve

| 0918    | Size   | DN  |
|---------|--------|-----|
| 2451 09 | 2"     | 50  |
| 2451 10 | 2.1/2" | 65  |
| 2451 11 | 3"     | 80  |
| 2451 12 | 4"     | 100 |
| 2451 13 | 5"     | 125 |
| 2451 14 | 6"     | 150 |
| 2451 16 | 8"     | 200 |

Tech Sheet 6120