



techhose

QUALITY CONNECTIONS

Hydraulics

Pneumatics
& Vacuum

Industrial

Compressed Air
& Ring Main

Process &
Instrumentation

Stainless Steel

Stainless Steel Pneumatic QRC

SERIES 25 QUICK COUPLING EUROPEAN PROFILE STAINLESS STEEL

stainless
steel



Working Temperature:
-15°C to +200°C
Standard seal FKM

Maximum Static Working Pressure:
PB 35 bar (500 PSI)



Interchangeability:
Rectus 26

Material:
Stainless steel coupling and plug
Application:
General purpose pneumatic coupling, stainless steel.



Profil

Couplings



Male Thread, BSPP

2510	Thread	Hex Size mm	Length mm
25KAAW13RVX	1/4"	19	59
25KAAW17RVX	3/8"	19	57.5

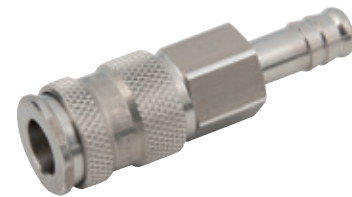
Tech Sheet 518



Female Thread, BSPP

2510	Thread	Hex Size mm	Length mm
25KAIW13RVX	1/4"	19	56
25KAIW17RVX	3/8"	19	55
25KAIW21RVX	1/2"	24	56

Tech Sheet 518



Hose Tail

2510	To Suit Hose ID	Hex Size mm	Length mm
25KATF10RVX	10mm (3/8")	19	74
25KATF13RVX	13mm (1/2")	19	74

Tech Sheet 518

Plugs



Male Thread, BSPP

2510	Thread	Hex Size mm	Length mm
25SFAW13RXX	1/4"	17	33.5
25SFAW17RXX	3/8"	19	33
25SFAW21RXX	1/2"	24	38

Tech Sheet 518



Female Thread, BSPP

2510	Thread	Hex Size mm	Length mm
25SFIW13RXX	1/4"	17	38.5
25SFIW17RXX	3/8"	19	39.5
25SFIW21RXX	1/2"	24	44

Tech Sheet 518



Hose Tail

2510	To Suit Hose ID	Length mm
25SFTF06RXX	6mm (1/4")	48
25SFTF08RXX	8mm (5/16")	48
25SFTF10RXX	10mm (3/8")	48
25SFTF13RXX	13mm (1/2")	48

Tech Sheet 518

Other materials, seals and finishes available on request, please contact our technical department for further details