

techhose

QUALITY CONNECTIONS

Hydraulics

Pneumatics
& Vacuum

Industrial

Compressed Air
& Ring Main

Process &
Instrumentation

Ring Main

UPVC Systems

UPVC METRIC PIPE SYSTEM



UPVC (Unplasticised Polyvinyl Chloride) is a **low maintenance material** selected for use across various industries due to its **high tensile strength** and durability. The outstanding feature of this product is its **excellent chemical resistance** which makes it suitable for a wide range of acids, alkalis and chemicals.

Working Temperature:
 All pressures quoted are based on a working temperature of 20°C
PVC-U Systems should never be used for temperatures in excess of 60°C

Maximum Working Pressure:
 16 bar Plain Fittings
 12 bar Threaded Fittings
 (Sizes 200mm/225mm with reduced safety factor)

20°C	30°C	40°C	50°C	60°C
16.0 bar	12.8 bar	9.2 bar	6.2 bar	3.5 bar

Sockets & Reducing Bushes



Equal Socket

1050	ID mm
SO-16-UPVC	16
SO-20-UPVC	20
SO-25-UPVC	25
SO-32-UPVC	32
SO-40-UPVC	40
SO-50-UPVC	50
SO-63-UPVC	63
SO-75-UPVC	75
SO-90-UPVC	90
SO-110-UPVC	110
SO-125-UPVC	125
SO-160-UPVC	160
SO-200-UPVC	200
SO-225-UPVC	225

Tech Sheet 10256



Reducing Socket

1050	ID mm	ID mm
RSO-2016-UPVC	20	16
RSO-2516-UPVC	25	16
RSO-2520-UPVC	25	20
RSO-3220-UPVC	32	20
RSO-3225-UPVC	32	25
RSO-4020-UPVC	40	20
RSO-4025-UPVC	40	25
RSO-4032-UPVC	40	32
RSO-5025-UPVC	50	25
RSO-5032-UPVC	50	32
RSO-5040-UPVC	50	40
RSO-6340-UPVC	63	40
RSO-6350-UPVC	63	50
RSO-7540-UPVC	75	40
RSO-7550-UPVC	75	50
RSO-7563-UPVC	75	63
RSO-9040-UPVC	90	40
RSO-9050-UPVC	90	50
RSO-9063-UPVC	90	63
RSO-9075-UPVC	90	75
RSO-11050-UPVC	110	50
RSO-11063-UPVC	110	63
RSO-11075-UPVC	110	75
RSO-11090-UPVC	110	90
RSO-12590-UPVC	125	90
RSO-125110-UPVC	125	110
RSO-14090-UPVC	140	90
RSO-140110-UPVC	140	110
RSO-140125-UPVC	140	125
RSO-160110-UPVC	160	110
RSO-160140-UPVC	160	140

Tech Sheet 10256



Reducing Bush

1050	OD mm	ID mm
RB-2016-UPVC	20	16
RB-2516-UPVC	25	16
RB-2520-UPVC	25	20
RB-3216-UPVC	32	16
RB-3220-UPVC	32	20
RB-3225-UPVC	32	25
RB-4020-UPVC	40	20
RB-4025-UPVC	40	25
RB-4032-UPVC	40	32
RB-5025-UPVC	50	25
RB-5032-UPVC	50	32
RB-5040-UPVC	50	40
RB-6325-UPVC	63	25
RB-6332-UPVC	63	32
RB-6340-UPVC	63	40
RB-6350-UPVC	63	50
RB-7532-UPVC	75	32
RB-7540-UPVC	75	40
RB-7550-UPVC	75	50
RB-7563-UPVC	75	63
RB-9050-UPVC	90	50
RB-9063-UPVC	90	63
RB-9075-UPVC	90	75
RB-11063-UPVC	110	63
RB-11075-UPVC	110	75
RB-11090-UPVC	110	90
RB-12575-UPVC	125	75
RB-12590-UPVC	125	90
RB-125110-UPVC	125	110
RB-14090-UPVC	140	90
RB-140110-UPVC	140	110
RB-140125-UPVC	140	125
RB-160110-UPVC	160	110
RB-160125-UPVC	160	125
RB-160140-UPVC	160	140
RB-180125-UPVC	180	125
RB-180140-UPVC	180	140
RB-180160-UPVC	180	160
RB-200160-UPVC	200	160
RB-200180-UPVC	200	180
RB-225160-UPVC	225	160
RB-225200-UPVC	225	200

Tech Sheet 10256

Plain x Threaded Socket, BSPP

1050	ID mm	Thread
TSO-16-38-UPVC	16	3/8"
TSO-20-12-UPVC	20	1/2"
TSO-25-34-UPVC	25	3/4"
TSO-32-1-UPVC	32	1"
TSO-40-114-UPVC	40	1.1/4"
TSO-50-112-UPVC	50	1.1/2"
TSO-63-2-UPVC	63	2"
TSO-75-212-UPVC	75	2.1/2"
TSO-90-3-UPVC	90	3"
TSO-110-4-UPVC	110	4"
TSO-125-5-UPVC	125	5"

Tech Sheet 10256



UPVC METRIC PIPE SYSTEM


Working Temperature:

All pressures quoted are based on a working temperature of 20°C

PVC-U Systems should never be used for temperatures in excess of 60°C


Maximum Working Pressure:

16 bar Plain Fittings

12 bar Threaded Fittings

(Sizes 200mm/225mm with reduced safety factor)

20°C	30°C	40°C	50°C	60°C
16.0 bar	12.8 bar	9.2 bar	6.2 bar	3.5 bar

Elbows & Bends



Equal 90° Elbow

1050	ID mm
EE-90-16-UPVC	16
EE-90-20-UPVC	20
EE-90-25-UPVC	25
EE-90-32-UPVC	32
EE-90-40-UPVC	40
EE-90-50-UPVC	50
EE-90-63-UPVC	63
EE-90-75-UPVC	75
EE-90-90-UPVC	90
EE-90-110-UPVC	110
EE-90-125-UPVC	125
EE-90-140-UPVC	140
EE-90-160-UPVC	160
EE-90-200-UPVC	200
EE-90-225-UPVC	225

Tech Sheet 10256



Equal 45° Elbow

1050	ID mm
EE-45-16-UPVC	16
EE-45-25-UPVC	25
EE-45-32-UPVC	32
EE-45-40-UPVC	40
EE-45-50-UPVC	50
EE-45-63-UPVC	63
EE-45-75-UPVC	75
EE-45-90-UPVC	90
EE-45-110-UPVC	110
EE-45-125-UPVC	125
EE-45-140-UPVC	140
EE-45-200-UPVC	200
EE-45-225-UPVC	225

Tech Sheet 10256



Equal 90° Bend, Short Radius

1050	ID mm
EB-90-20-UPVC	20
EB-90-25-UPVC	25
EB-90-32-UPVC	32
EB-90-40-UPVC	40
EB-90-50-UPVC	50
EB-90-63-UPVC	63
EB-90-75-UPVC	75
EB-90-110-UPVC	110

Tech Sheet 10256



Equal 45° Bend, Short Radius

1050	ID mm
EB-45-32-UPVC	32
EB-45-40-UPVC	40
EB-45-63-UPVC	63
EB-45-75-UPVC	75
EB-45-90-UPVC	90

Tech Sheet 10256



Plain x Threaded 90° Elbow, BSPP

1050	ID mm	Thread
TE-90-16-UPVC	16	3/8"
TE-90-20-UPVC	20	1/2"
TE-90-25-UPVC	25	3/4"
TE-90-32-UPVC	32	1"
TE-90-40-UPVC	40	1.1/4"
TE-90-50-UPVC	50	1.1/2"
TE-90-63-UPVC	63	2"
TE-90-75-UPVC	75	2.1/2"

Tech Sheet 10256



Plain x Threaded 45° Elbow, BSPP

1050	ID mm	Thread
TE-45-16-UPVC	16	3/8"
TE-45-20-UPVC	20	1/2"
TE-45-25-UPVC	25	3/4"
TE-45-32-UPVC	32	1"
TE-45-40-UPVC	40	1.1/4"
TE-45-50-UPVC	50	1.1/2"
TE-45-63-UPVC	63	2"
TE-45-75-UPVC	75	2.1/2"
TE-45-110-UPVC	110	4"

Tech Sheet 10256

UPVC METRIC PIPE SYSTEM



Working Temperature:
 All pressures quoted are based on a working temperature of 20°C
PVC-U Systems should never be used for temperatures in excess of 60°C

Maximum Working Pressure:
 16 bar Plain Fittings
 12 bar Threaded Fittings
 (Sizes 200mm/225mm with reduced safety factor)

20°C	30°C	40°C	50°C	60°C
16.0 bar	12.8 bar	9.2 bar	6.2 bar	3.5 bar

Tees



Equal Tee

1050	ID mm
T-16-UPVC	16
T-20-UPVC	20
T-25-UPVC	25
T-32-UPVC	32
T-40-UPVC	40
T-50-UPVC	50
T-63-UPVC	63
T-75-UPVC	75
T-90-UPVC	90
T-110-UPVC	110
T-125-UPVC	125
T-140-UPVC	140
T-160-UPVC	160
T-200-UPVC	200
T-225-UPVC	225

Tech Sheet 10256



Equal 45° Tee

1050	ID mm
TY-16-UPVC	16
TY-20-UPVC	20
TY-25-UPVC	25
TY-32-UPVC	32
TY-40-UPVC	40
TY-50-UPVC	50
TY-63-UPVC	63

Tech Sheet 10256

Reducing Branch Tee

1050	ID mm	ID mm
TR-2016-UPVC	20	16
TR-2516-UPVC	25	16
TR-2520-UPVC	25	20
TR-3216-UPVC	32	16
TR-3220-UPVC	32	20
TR-3225-UPVC	32	25
TR-4016-UPVC	40	16
TR-4025-UPVC	40	25
TR-5020-UPVC	50	20
TR-5025-UPVC	50	25
TR-5032-UPVC	50	32
TR-5040-UPVC	50	40
TR-6325-UPVC	63	25
TR-6332-UPVC	63	32
TR-6340-UPVC	63	40
TR-6350-UPVC	63	50
TR-7532-UPVC	75	32
TR-7540-UPVC	75	40
TR-7550-UPVC	75	50
TR-7563-UPVC	75	63
TR-9040-UPVC	90	40
TR-9050-UPVC	90	50
TR-9063-UPVC	90	63
TR-9075-UPVC	90	75
TR-11050-UPVC	110	50
TR-11075-UPVC	110	75
TR-11090-UPVC	110	90
TR-12563-UPVC	125	63
TR-12575-UPVC	125	75
TR-12590-UPVC	125	90
TR-125110-UPVC	125	110
TR-14075-UPVC	140	75
TR-14090-UPVC	140	90
TR-140110-UPVC	140	110
TR-140125-UPVC	140	125
TR-16090-UPVC	160	90
TR-160110-UPVC	160	110
TR-160125-UPVC	160	125
TR-160140-UPVC	160	140

Tech Sheet 10256

Crosses



Equal Cross

1050	ID mm
X-16-UPVC	16
X-20-UPVC	20
X-25-UPVC	25
X-32-UPVC	32
X-40-UPVC	40
X-50-UPVC	50
X-75-UPVC	75
X-90-UPVC	90
X-110-UPVC	110

Tech Sheet 10256

Caps



Plain

1050	ID mm
BC-16-UPVC	16
BC-20-UPVC	20
BC-25-UPVC	25
BC-32-UPVC	32
BC-40-UPVC	40
BC-50-UPVC	50
BC-63-UPVC	63
BC-75-UPVC	75
BC-90-UPVC	90
BC-110-UPVC	110
BC-125-UPVC	125
BC-140-UPVC	140
BC-160-UPVC	160
BC-200-UPVC	200
BC-225-UPVC	225

Tech Sheet 10256

UPVC METRIC PIPE SYSTEM



Working Temperature:

All Pressures quoted are based on a working temperature of 20°C

PVC-U Systems should never be used for temperatures in excess of 60°C



Maximum Working Pressure:

16 bar Plain Fittings
12 bar Threaded Fittings
(excluding 75mm-110mm Unions, which are 10 bar rated)

20°C	30°C	40°C	50°C	60°C
16.0 bar	12.8 bar	9.2 bar	6.2 bar	3.5 bar

Unions



Equal Union

1050	ID mm
U-16-UPVC	16
U-20-UPVC	20
U-25-UPVC	25
U-32-UPVC	32
U-40-UPVC	40
U-50-UPVC	50
U-63-UPVC	63
U-75-UPVC	75
U-90-UPVC	90
U-110-UPVC	110

Tech Sheet 10256



Plain x Threaded Union, BSPP

1050	ID mm	Thread
UT-16-UPVC	16	3/8"
UT-20-UPVC	20	1/2"
UT-25-UPVC	25	3/4"
UT-32-UPVC	32	1"
UT-40-UPVC	40	1.1/4"
UT-50-UPVC	50	1.1/2"
UT-63-UPVC	63	2"
UT-75-UPVC	75	2.1/2"
UT-90-UPVC	90	3"
UT-110-UPVC	110	4"

Tech Sheet 10256

Threaded Adaptors



Plain x Male Threaded Adaptor, BSPP

1050	ID mm	OD mm	Thread
MTA-12-38-UPVC	12	16	3/8"
MTA-16-12-UPVC	16	20	1/2"
MTA-16-38-UPVC	16	20	3/8"
MTA-20-12-UPVC	20	25	1/2"
MTA-20-34-UPVC	20	25	3/4"
MTA-20-38-UPVC	20	25	3/8"
MTA-25-1-UPVC	25	32	1"
MTA-25-12-UPVC	25	32	1/2"
MTA-25-34-UPVC	25	32	3/4"
MTA-32-1-UPVC	32	40	1"
MTA-32-114-UPVC	32	40	1.1/4"
MTA-32-34UPVC	32	40	3/4"
MTA-40-1-UPVC	40	50	1"
MTA-40-112-UPVC	40	50	1.1/2"
MTA-40-114-UPVC	40	50	1.1/4"
MTA-50-112-UPVC	50	63	1.1/2"
MTA-50-114-UPVC	50	63	1.1/4"
MTA-50-2-UPVC	50	63	2"
MTA-63-112-UPVC	63	75	1.1/2"
MTA-63-2-UPVC	63	75	2"
MTA-63-212-UPVC	63	75	2.1/2"
MTA-75-2-UPVC	75	90	2"
MTA-75-212-UPVC	75	90	2.1/2"
MTA-75-3-UPVC	75	90	3"
MTA-90-212-UPVC	90	110	2.1/2"
MTA-90-3-UPVC	90	110	3"
MTA-90-4-UPVC	90	110	4"
MTA-110-3-UPVC	110	125	3"
MTA-110-4-UPVC	110	125	4"
MTA-110-5-UPVC	110	125	5"

Tech Sheet 10256



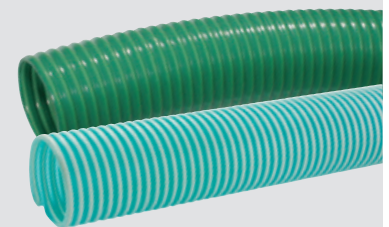
Plain x Female Threaded Adaptor, BSPP

1050	OD mm	Thread
FTA-16-38-UPVC	16	3/8"
FTA-16-12-UPVC	16	1/2"
FTA-20-12-UPVC	20	1/2"
FTA-20-34-UPVC	20	3/4"
FTA-25-1-UPVC	25	1"
FTA-25-12-UPVC	25	1/2"
FTA-25-34-UPVC	25	3/4"
FTA-32-1-UPVC	32	1"
FTA-32-34-UPVC	32	3/4"
FTA-40-1-UPVC	40	1"
FTA-40-114-UPVC	40	1.1/4"
FTA-50-112-UPVC	50	1.1/2"
FTA-50-114-UPVC	50	1.1/4"
FTA-50-2-UPVC	50	2"
FTA-63-112-UPVC	63	1.1/2"
FTA-63-2-UPVC	63	2"
FTA-75-2-UPVC	75	2"
FTA-75-212-UPVC	75	2.1/2"
FTA-90-212-UPVC	90	2.1/2"
FTA-90-3-UPVC	90	3"
FTA-90-4-UPVC	90	4"
FTA-110-3-UPVC	110	3"
FTA-110-4-UPVC	110	4"

Tech Sheet 10256



Customers who bought from this page also purchased **Suction Hose** see pages **1427-1431**



UPVC METRIC PIPE SYSTEM



Working Temperature:
All pressures quoted are based on

a working temperature of 20°C
PVC-U Systems should never be used for temperatures in excess of 60°C

Maximum Working Pressure:
16 bar Plain fitting
12 bar Threaded fitting

Flanges



Stub Flange, Serrated Face

1050	ID mm
SF-20-UPVC	20
SF-25-UPVC	25
SF-32-UPVC	32
SF-40-UPVC	40
SF-50-UPVC	50
SF-63-UPVC	63
SF-75-UPVC	75
SF-90-UPVC	90
SF-110-UPVC	110

Tech Sheet 10256



PN16 Full Face Flange

1050	ID mm	Flange Size
FPN16-20-UPVC	20	1/2"
FPN16-25-UPVC	25	3/4"
FPN16-32-UPVC	32	1"
FPN16-40-UPVC	40	1.1/4"
FPN16-50-UPVC	50	1.1/2"
FPN16-63-UPVC	63	2"
FPN16-75-UPVC	75	2.1/2"
FPN16-90-UPVC	90	3"
FPN16-110-UPVC	110	4"

Tech Sheet 10256

ASA150 Full Face Flange

1050	ID mm	Flange Size
FASA150-25-UPVC	25	3/4"
FASA150-32-UPVC	32	1"
FASA150-40-UPVC	40	1.1/4"
FASA150-50-UPVC	50	1.1/2"
FASA150-63-UPVC	63	2"
FASA150-90-UPVC	90	3"
FASA150-110-UPVC	110	4"

Tech Sheet 10256



PN16 Blanking Flange

1050	To Suit mm	Flange Size
BPN16-20-UPVC	20	1/2"
BPN16-25-UPVC	25	3/4"
BPN16-32-UPVC	32	1"
BPN16-40-UPVC	40	1.1/4"
BPN16-50-UPVC	50	1.1/2"
BPN16-63-UPVC	63	2"
BPN16-75-UPVC	75	2.1/2"
BPN16-110-UPVC	110	4"

Tech Sheet 10256

ASA150 Blanking Flange

1050	To Suit mm	Flange Size
BASA150-32-UPVC	32	1"
BASA150-40-UPVC	40	1.1/4"
BASA150-50-UPVC	50	1.1/2"
BASA150-63-UPVC	63	2"
BASA150-75-UPVC	75	2.1/2"
BASA150-90-UPVC	90	3"
BASA150-110-UPVC	110	4"

Tech Sheet 10256



PN16 Flange Gasket, EPDM

1050	To Suit mm
PNFG-20	20
PNFG-25	25
PNFG-32	32
PNFG-40	40
PNFG-50	50
PNFG-63	63
PNFG-75	75
PNFG-90	90
PNFG-110	110

Tech Sheet 10256

ASA150 Flange Gasket, EPDM

1050	To Suit mm
ASAFG-20	20
ASAFG-25	25
ASAFG-32	32
ASAFG-50	50
ASAFG-63	63
ASAFG-75	75
ASAFG-90	90

Tech Sheet 10256



PN16 Galvanised Backing Ring

1050	To Suit mm
GBR-25	25
GBR-32	32
GBR-40	40
GBR-50	50
GBR-63	63
GBR-75	75
GBR-90	90
GBR-110	110

Tech Sheet 10256



PN16 UPVC Backing Ring

1050	To Suit mm
UPVCBR-20	20
UPVCBR-25	25
UPVCBR-32	32
UPVCBR-40	40
UPVCBR-50	50
UPVCBR-63	63
UPVCBR-110	110

Tech Sheet 10256



Stub Flange Gasket, EPDM

1050	To Suit mm
SFG-20	20
SFG-32	32
SFG-40	40
SFG-50	50
SFG-63	63
SFG-75	75
SFG-90	90
SFG-110	110

Tech Sheet 10256

UPVC METRIC PIPE SYSTEM



Industrial Valves



Working Temperature:

All pressures quoted are based on a working temperature of 20°C

PVC-U Systems

should never be used for temperatures in excess of 60°C



Maximum Working Pressure:

16 bar Plain ends
12 bar Threaded ends up to 63mm.
10 bar 75mm-110mm



Double Union Ball Valve, EPDM Seals

1050	ID mm
DUBV-16-UPVC	16
DUBV-20-UPVC	20
DUBV-25-UPVC	25
DUBV-32-UPVC	32
DUBV-40-UPVC	40
DUBV-50-UPVC	50
DUBV-63-UPVC	63
DUBV-75-UPVC	75
DUBV-90-UPVC	90
DUBV-110-UPVC	110

Tech Sheet 10256



Double Union Spring Check Valve, EPDM Seals

1050	ID mm
DUCV-20-UPVC	20
DUCV-25-UPVC	25
DUCV-32-UPVC	32
DUCV-40-UPVC	40
DUCV-50-UPVC	50
DUCV-63-UPVC	63
DUCV-75-UPVC	75
DUCV-90-UPVC	90
DUCV-110-UPVC	110

Tech Sheet 10256



Double Union Foot Valve, EPDM Seals

1050	ID mm
DUFV-20-UPVC	20
DUFV-25-UPVC	25
DUFV-40-UPVC	40
DUFV-50-UPVC	50
DUFV-63-UPVC	63
DUFV-75-UPVC	75
DUFV-90-UPVC	90
DUFV-110-UPVC	110

Tech Sheet 10256

UPVC Tubing



Working Temperature:

All pressures quoted are based on a working temperature of 20°C

PVC-U Systems should never be used for temperatures in excess of 60°C



Maximum Working Pressure:

16 bar

4 Metre lengths may take up to 3 working days to be delivered, dependant on weight and delivery address location. Additional carriage charges may apply. For full details please contact sales.



PN16, 6 Metre Lengths

0118	OD mm
UPVC/TUBE-6-16	16
UPVC/TUBE-6-20	20
UPVC/TUBE-6-25	25
UPVC/TUBE-6-32	32
UPVC/TUBE-6-40	40
UPVC/TUBE-6-50	50
UPVC/TUBE-6-63	63
UPVC/TUBE-6-75	75
UPVC/TUBE-6-90	90
UPVC/TUBE-6-110	110
UPVC/TUBE-6-140	140
UPVC/TUBE-6-160	160
UPVC/TUBE-6-225	225

Tech Sheet 10256

PN16, 3 Metre Lengths

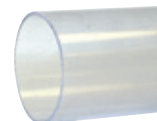
0118	OD mm
UPVC/TUBE-3-16	16
UPVC/TUBE-3-20	20
UPVC/TUBE-3-25	25
UPVC/TUBE-3-32	32
UPVC/TUBE-3-40	40
UPVC/TUBE-3-50	50
UPVC/TUBE-3-63	63
UPVC/TUBE-3-75	75
UPVC/TUBE-3-90	90
UPVC/TUBE-3-110	110
UPVC/TUBE-3-140	140
UPVC/TUBE-3-160	160
UPVC/TUBE-3-225	225

Tech Sheet 10256

Clear UPVC Tubing

Please Note: Clear PVC pipe is not suitable for outdoor use without adequate UV protection.

4 Metre lengths may take up to 3 working days to be delivered, dependant on weight and delivery address location. Additional carriage charges may apply. For full details please contact sales.



With Blue Tint, 5 Metre Lengths

0118	OD mm	Wall Thickness mm
CUPVC/TUBE2015	20	1.5
CUPVC/TUBE2515	25	1.5
CUPVC/TUBE3218	32	1.8
CUPVC/TUBE3224	32	2.4
CUPVC/TUBE4020	40	2
CUPVC/TUBE4030	40	3
CUPVC/TUBE5018	50	1.8
CUPVC/TUBE6318	63	1.8
CUPVC/TUBE6330	63	3
CUPVC/TUBE6347	63	4.7
CUPVC/TUBE-7518	75	1.8
CUPVC/TUBE-7536	75	3.6
CUPVC/TUBE-9018	90	1.8
CUPVC/TUBE-11022	110	2.2
CUPVC/TUBE-11053	110	5.3
CUPVC/TUBE-12525	125	2.5
CUPVC/TUBE-14028	140	2.8
CUPVC/TUBE-16032	160	3.2
CUPVC/TUBE-16047	160	4.7

Tech Sheet 10256

Pipe Clips

Type 1



Type 2



Type 3



Black PP Clips

1050	ID mm	Type
PPCLIP-16	16	1
PPCLIP-20	20	1
PPCLIP-25	25	1
PPCLIP-32	32	1
PPCLIP-40	40	2
PPCLIP-50	50	2
PPCLIP-63	63	2
PPCLIP-75	75	2
PPCLIP-90	90	2
PPCLIP-110	110	2
PPCLIP-160	160	2
PPCLIP-225	225	3

Tech Sheet 10256

UPVC METRIC PIPE SYSTEM



Working Temperature:
All pressures quoted are based on

a working temperature of 20°C
PVC-U Systems should never be used for temperatures in excess of 60°C

Maximum Working Pressure:
16 bar Plain fitting
12 bar Threaded fitting

Hose Connections

Male Spigot, Metric x Hose Tail, Metric



1050	Tube OD mm	Hosetail mm
HN50-1212-UPVC	12	12
HN50-1616-UPVC	16	16
HN50-2020-UPVC	20	20
HN50-2525-UPVC	25	25
HN50-3232-UPVC	32	32
HN50-5050-UPVC	50	50
HN50-6060-UPVC	63	63

Tank Connectors



Plain x Female, BSPP

1050	Tube OD mm	Thread
TC-32-1-UPVC	32	1"
TC-10-114-UPVC	40	1.1/4"

Threaded Adaptors

Plain x Threaded Female Stainless Steel Reinforced, BSPP



1050	Tube OD mm	Thread
FFTA-50-112-UPVC	50	1.1/2"



Plain Male x Threaded Female Stainless Steel Reinforced, BSPP

1050	Tube OD mm	Thread
MFTA-50-112-UPVC	50	1.1/2"

Valves

Standard Plain Single Union Ball Valve, EPDM Seals



1050	Tube OD mm
SUBV-32-UPVC	32

Valve End



UPVC Plain Valve End

1050	Tube OD mm
VE-32-UPVC	32

Tubing Accessories

Emery Tape 38mm x 5 Metres



1050	Size
ET-38-5	38mm x 5 Metres



1" Glue Brush

1050	Description
GB-1	1" Glue Brush

Griffon UNI100 UPVC Cement



1050	Size ml
PVC250	250
PVC	500

Tech Sheet 876

Griffon WDF-05 Quick Set Cement



1050	Size ml
QSC-250	250
WDF-05	500

Griffon HCR-36 Chemical Cement



1050	Size ml
CHEMC-1000	1000

Griffon UNI100 GT Slow Setting UPVC Cement



1050	Size
SSC-5000-UPVC	5 Litre

Griffon Aqua-Max Pool Sealant



1050	Size grms
AQM-SEALANT	425

Griffon Chamfering Tool 1/2" - 2"



1050	Description
CT-12-2	Chamfering Tool 1/2" - 2"

UPVC IMPERIAL PIPE SYSTEM



Recommended Working Temperature:
0°C to 60°C



Pressure Ratings for Fittings:
15 bar (8" with reduced safety factor)

For Air Ring Mains use ABS. UPVC is not suitable for use with compressed air.

UPVC = Unplasticized Poly Vinyl Chloride
ABS = Acrylonitrile-Butadiene-Styrene Copolymers

Sockets & Reducing Bushes



Equal Socket

1050	Nominal Bore ID
SO13-12-UPVC	1/2"
SO13-34-UPVC	3/4"
SO13-1-UPVC	1"
SO13-114-UPVC	1.1/4"
SO13-112-UPVC	1.1/2"
SO13-2-UPVC	2"
SO13-212-UPVC	2.1/2"
SO13-3-UPVC	3"
SO13-4-UPVC	4"
SO13-5-UPVC	5"
SO13-6-UPVC	6"
SO13-8-UPVC	8"

Tech Sheet 10254



Reducing Socket

1050	Nominal Bore ID	Nominal Bore ID
RS13-3412-UPVC	3/4"	1/2"
RS13-134-UPVC	1"	3/4"
RS13-1141-UPVC	1.1/4"	1"
RS13-112112-UPVC	1.1/2"	1.1/4"
RS13-2112-UPVC	2"	1.1/2"
RS13-2122-UPVC	2.1/2"	2"
RS13-3212-UPVC	3"	2.1/2"
RS13-43-UPVC	4"	3"

Tech Sheet 10254

Equal Barrel Nipples



Male, BSPT

1050	Thread
BN11-14-UPVC	1/4"
BN11-38-UPVC	3/8"
BN11-12-UPVC	1/2"
BN11-34-UPVC	3/4"
BN11-1-UPVC	1"
BN11-114-UPVC	1.1/4"
BN11-112-UPVC	1.1/2"
BN11-2-UPVC	2"
BN11-212-UPVC	2.1/2"
BN11-3-UPVC	3"
BN11-4-UPVC	4"

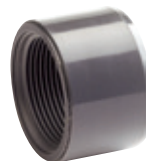
Tech Sheet 10254



Socket, Imperial x Metric

1050	Nominal Bore ID	ID mm
SO14-3534-UPVC	3/4"	25
SO14-321-UPVC	1"	32
SO14-40114-UPVC	1.1/4"	40
SO14-50112-UPVC	1.1/2"	50
SO14-632-UPVC	2"	63
SO14-903-UPVC	3"	90
SO14-1104-UPVC	4"	110

Tech Sheet 10254



Plain x Threaded Reducing Bush, BSPP

1050	Nominal Bore ID	Thread
RB30-3814-UPVC	3/8"	1/4"
RB30-1214-UPVC	1/2"	1/4"
RB30-1238-UPVC	1/2"	3/8"
RB30-3438-UPVC	3/4"	1/2"
RB30-112-UPVC	1"	3/4"
RB30-11434-UPVC	1.1/4"	1"
RB30-1121-UPVC	1.1/2"	1.1/4"
RB30-2114-UPVC	2"	1.1/2"
RB30-212112-UPVC	2.1/2"	2"
RB30-3212-UPVC	3"	2.1/2"
RB30-43-UPVC	4"	3"

Tech Sheet 10254



Reducing Bush

1050	Nominal Bore ID	Nominal Bore ID
RB93-3412-UPVC	3/4"	1/2"
RB93-112-UPVC	1"	1/2"
RB93-134-UPVC	1"	3/4"
RB93-11412-UPVC	1.1/4"	1/2"
RB93-11434-UPVC	1.1/4"	3/4"
RB93-1141-UPVC	1.1/4"	1"
RB93-11234-UPVC	1.1/2"	3/4"
RB93-1121-UPVC	1.1/2"	1"
RB93-112114-UPVC	1.1/2"	1.1/4"
RB93-21-UPVC	2"	1"
RB93-2114-UPVC	2"	1.1/4"
RB93-2112-UPVC	2"	1.1/2"
RB93-212112-UPVC	2.1/2"	1.1/2"
RB93-2122-UPVC	2.1/2"	2"
RB93-3112-UPVC	3"	1.1/2"
RB93-32-UPVC	3"	2"
RB93-3212-UPVC	3"	2.1/2"
RB93-42-UPVC	4"	2"
RB93-4212-UPVC	4"	2.1/2"
RB93-43-UPVC	4"	3"
RB93-53-UPVC	5"	3"
RB93-54-UPVC	5"	4"
RB93-64-UPVC	6"	4"
RB93-86-UPVC	8"	6"

Tech Sheet 10254

Tube O.D. - Size Conversion Table

Nominal Bore	Outside Diameter
3/8"	17.1mm
1/2"	21.3mm
3/4"	26.7mm
1"	33.4mm
1.1/4"	42.2mm
1.1/2"	48.3mm
2"	60.3mm
2.1/2"	75mm
3"	88.9mm
4"	114.3mm
5"	140mm
6"	168.3mm
8"	219.1mm

UPVC IMPERIAL PIPE SYSTEM



Recommended Working Temperature:
0°C to 60°C

Pressure Ratings for Fittings:
15 bar (8" with reduced safety factor)

For Air Ring Mains use ABS. UPVC is not suitable for use with compressed air.

UPVC = Unplasticized Poly Vinyl Chloride
ABS = Acrylonitrile-Butadiene-Styrene Copolymers

Elbows & Bends



Equal 90° Elbow

1050	Nominal Bore ID
EL53-12-UPVC	1/2"
EL53-34-UPVC	3/4"
EL53-1-UPVC	1"
EL53-114-UPVC	1.1/4"
EL53-112-UPVC	1.1/2"
EL53-2-UPVC	2"
EL53-212-UPVC	2.1/2"
EL53-3-UPVC	3"
EL53-4-UPVC	4"
EL53-5-UPVC	5"
EL53-6-UPVC	6"
EL53-8-UPVC	8"

Tech Sheet 10254



Plain x Threaded 90° Elbow, BSPP

1050	Nominal Bore ID	Thread
PVEP12	1/2"	1/2"
PVEP34	3/4"	3/4"
PVEP1	1"	1"
PVEP114	1.1/4"	1.1/4"
PVEP112	1.1/2"	1.1/2"
PVEP2	2"	2"
PVEP212	2.1/2"	2.1/2"
PVEP3	3"	3"
PVEP4	4"	4"

Tech Sheet 10254



Equal 90° Bend Short Radius

1050	Nominal Bore ID
BE33-12-UPVC	1/2"
BE33-34-UPVC	3/4"
BE33-1-UPVC	1"
BE33-114-UPVC	1.1/4"
BE33-112-UPVC	1.1/2"
BE33-2-UPVC	2"
BE33-212-UPVC	2.1/2"
BE33-3-UPVC	3"
BE33-4-UPVC	4"

Tech Sheet 10254



Equal 45° Elbow

1050	Nominal Bore ID
EY53-12-UPVC	1/2"
EY53-34-UPVC	3/4"
EY53-1-UPVC	1"
EY53-114-UPVC	1.1/4"
EY53-112-UPVC	1.1/2"
EY53-2-UPVC	2"
EY53-212-UPVC	2.1/2"
EY53-3-UPVC	3"
EY53-4-UPVC	4"
EY53-5-UPVC	5"
EY53-6-UPVC	6"
EY53-8-UPVC	8"

Tech Sheet 10254



Plain x Threaded 45° Elbow, BSPP

1050	Nominal Bore ID	Thread
PVEP45-12	1/2"	1/2"
PVEP45-34	3/4"	3/4"
PVEP45-1	1"	1"
PVEP45-114	1.1/4"	1.1/4"
PVEP45-112	1.1/2"	1.1/2"
PVEP45-2	2"	2"
PVEP45-212	2.1/2"	2.1/2"
PVEP45-3	3"	3"
PVEP45-4	4"	4"

Tech Sheet 10254

Tees



Equal 45° Tee

1050	Nominal Bore ID
TY43-12-UPVC	1/2"
TY43-34-UPVC	3/4"
TY43-1-UPVC	1"
TY43-114-UPVC	1.1/4"
TY43-112-UPVC	1.1/2"
TY43-2-UPVC	2"

Tech Sheet 10254



Plain x Threaded Branch Tee, BSPP

1050	Nominal Bore ID	Thread
PVTP12	1/2"	1/2"
PVTP34	3/4"	3/4"
PVTP1	1"	1"
PVTP114	1.1/4"	1.1/4"
PVTP112	1.1/2"	1.1/2"
PVTP2	2"	2"
PVTP212	2.1/2"	2.1/2"
PVTP3	3"	3"
PVTP4	4"	4"

Tech Sheet 10254



Equal Tee

1050	Nominal Bore ID
TE43-12-UPVC	1/2"
TE43-34-UPVC	3/4"
TE43-1-UPVC	1"
TE43-114-UPVC	1.1/4"
TE43-112-UPVC	1.1/2"
TE43-2-UPVC	2"
TE43-212-UPVC	2.1/2"
TE43-3-UPVC	3"
TE43-4-UPVC	4"
TE43-5-UPVC	5"
TE43-6-UPVC	6"
TE43-8-UPVC	8"

Tech Sheet 10254

UPVC IMPERIAL PIPE SYSTEM



Working Temperature:
0°C to 60°C



Maximum Working Pressure:
15 bar
(8" with reduced safety factor)

For Air Ring Mains use ABS. UPVC is not suitable for use with compressed air.

UPVC = Unplasticized Poly Vinyl Chloride
ABS = Acrylonitrile-Butadiene-Styrene Copolymers

Crosses



Equal Cross

1050	Nominal Bore ID
CR33-12-UPVC	1/2"
CR33-34-UPVC	3/4"
CR33-1-UPVC	1"
CR33-114-UPVC	1.1/4"
CR33-112-UPVC	1.1/2"
CR33-2-UPVC	2"
CR33-212-UPVC	2.1/2"

Tech Sheet 10254

Caps



Plain

1050	Nominal Bore ID
CA73-12-UPVC	1/2"
CA73-34-UPVC	3/4"
CA73-1-UPVC	1"
CA73-114-UPVC	1.1/4"
CA73-112-UPVC	1.1/2"
CA73-2-UPVC	2"
CA73-212-UPVC	2.1/2"
CA73-3-UPVC	3"
CA73-4-UPVC	4"
CA73-5-UPVC	5"
CA73-6-UPVC	6"
CA73-8-UPVC	8"

Tech Sheet 10254

Unions



Equal Union

1050	Nominal Bore ID
UN83-12-UPVC	1/2"
UN83-34-UPVC	3/4"
UN83-1-UPVC	1"
UN83-114-UPVC	1.1/4"
UN83-112-UPVC	1.1/2"
UN83-2-UPVC	2"
UN83-212-UPVC	2.1/2"
UN83-3-UPVC	3"
UN83-4-UPVC	4"

Tech Sheet 10254



Plain x Male Threaded Union, BSPP

1050	Nominal Bore ID	Thread
PVUPM112	1.1/2"	1.1/2"
PVUPM2-112	2"	1.1/2"
PVUPM2	2"	2"

Tech Sheet 10254



Plain x Female Threaded Union, BSPP

1050	Nominal Bore ID	Thread
PVUPF12	1/2"	1/2"
PVUPF34	3/4"	3/4"
PVUPF1	1"	1"
PVUPF114	1.1/4"	1.1/4"
PVUPF112	1.1/2"	1.1/2"
PVUPF2	2"	2"
PVUPF212	2.1/2"	2.1/2"
PVUPF3	3"	3"
PVUPF4	4"	4"

Tech Sheet 10254

Threaded Adaptors



Male, BSPP

1050	Nominal Bore ID	Thread
AD32-3-UPVC	1/2"	1/2"
AD32-4-UPVC	3/4"	1/2"
AD32-5-UPVC	3/4"	3/4"
AD32-6-UPVC	3/4"	1"
AD32-7-UPVC	1"	1"
AD32-8-UPVC	1"	1.1/4"
AD32-9-UPVC	1.1/4"	1.1/4"
AD32-10-UPVC	1.1/4"	1.1/2"
AD32-11-UPVC	1.1/2"	1.1/2"
AD32-12-UPVC	1.1/2"	2"
AD32-13-UPVC	2"	2"
AD32-15-UPVC	2.1/2"	2.1/2"
AD32-17-UPVC	3"	3"
AD32-19-UPVC	4"	4"

Tech Sheet 10254



Plain x Female Threaded Adaptor, BSPP

1050	Nominal Bore ID	Thread
AD42-1212-UPVC	1/2"	1/2"
AD42-3412-UPVC	1/2"	3/4"
AD42-1234-UPVC	3/4"	1/2"
AD42-3434-UPVC	3/4"	3/4"
AD42-341-UPVC	3/4"	1"
AD42-134-UPVC	1"	3/4"
AD42-11-UPVC	1"	1"
AD42-1141-UPVC	1"	1.1/4"
AD42-114114-UPVC	1.1/4"	1.1/4"
AD42-112114-UPVC	1.1/4"	1.1/2"
AD42-112112-UPVC	1.1/2"	1.1/2"
AD42-2112-UPVC	1.1/2"	2"
AD42-1122-UPVC	2"	1.1/2"
AD42-22-UPVC	2"	2"
AD42-2122-UPVC	2"	2.1/2"
AD42-212212-UPVC	2.1/2"	2.1/2"
AD42-3212-UPVC	2.1/2"	3"
AD42-2123-UPVC	3"	2.1/2"
AD42-33-UPVC	3"	3"
AD42-43-UPVC	3"	4"
AD42-34-UPVC	4"	3"
AD42-44-UPVC	4"	4"

Tech Sheet 10254

UPVC IMPERIAL PIPE SYSTEM



Working Temperature:
0°C to 60°C

Maximum Working Pressure:
15 bar
(8" with reduced safety factor)

For Air Ring Mains use ABS. UPVC is not suitable for use with compressed air.

UPVC = Unplasticized Poly Vinyl Chloride
ABS = Acrylonitrile-Butadiene-Styrene Copolymers

Hose Connections



Plain x Hose Tail

1050	Nominal Bore ID	To Suit Hose ID mm
HN63-12-UPVC	1/2"	20
HN63-34-UPVC	3/4"	25
HN63-1-UPVC	1"	32
HN63-114-UPVC	1.1/4"	40
HN63-112-UPVC	1.1/2"	50
HN63-2-UPVC	2"	60

Tech Sheet 10254



Male, BSPP x Hose Tail

1050	Thread	To Suit Hose ID
PVHTM14-12	1/4"	12mm
PVHTM38-58	3/8"	16mm
PVHTM12	1/2"	1/2"
PVHTM12-34	1/2"	20mm
PVHTM34	3/4"	3/4"
PVHTM34-1	3/4"	25mm
PVHTM1	1"	1"
PVHTM1-114	1"	32mm
PVHTM114-112	1.1/4"	40mm
PVHTM112-2	1.1/2"	50mm
PVHTM2-212	2"	60mm

Tech Sheet 10254



Female, BSPP x Hose Tail

1050	Thread	To Suit Hose ID mm
HN64-3416-UPVC	3/4"	16
HN64-120-UPVC	1"	20
HN64-11425-UPVC	1.1/4"	25
HN64-11230-UPVC	1.1/2"	30
HN64-240-UPVC	2"	40
HN64-21450-UPVC	2.1/4"	50
HN64-23460-UPVC	2.3/4"	60

Tech Sheet 10254

Tank Connectors



Plain x Female, BSPP

1050	Nominal Bore ID	Thread
TC93-12-UPVC	1/2"	1/2"
TC93-34-UPVC	3/4"	3/4"
TC93-1-UPVC	1"	1"
TC93-114-UPVC	1.1/4"	1.1/4"
TC93-112-UPVC	1.1/2"	1.1/2"
TC93-2-UPVC	2"	2"
TC93-212-UPVC	2.1/2"	2.1/2"
TC93-3-UPVC	3"	3"
TC93-4-UPVC	4"	4"

Tech Sheet 10254

Flanges



Stub Flange, Serrated Face

1050	Nominal Bore ID
ST23-12-UPVC	1/2"
ST23-34-UPVC	3/4"
ST23-1-UPVC	1"
ST23-114-UPVC	1.1/4"
ST23-112-UPVC	1.1/2"
ST23-2-UPVC	2"
ST23-212-UPVC	2.1/2"
ST23-3-UPVC	3"
ST23-4-UPVC	4"
ST23-5-UPVC	5"
ST23-6-UPVC	6"
ST23-8-UPVC	8"

Tech Sheet 10254



Full Face Table E

1050	Nominal Bore ID
FF30-12-UPVC	1/2"
FF30-34-UPVC	3/4"
FF30-1-UPVC	1"
FF30-114-UPVC	1.1/4"
FF30-112-UPVC	1.1/2"
FF30-2-UPVC	2"
FF30-3-UPVC	3"
FF30-4-UPVC	4"

Tech Sheet 10254



PN16 Blanking Flange

1050	Size
BF00-1-UPVC	1"
BF00-112-UPVC	1.1/2"
BF00-2-UPVC	2"
BF00-3-UPVC	3"
BF00-4-UPVC	4"
BF00-5-UPVC	5"

Tech Sheet 10254

Tube O.D. - Size Conversion Table

Nominal Bore	Outside Diameter	Nominal Bore	Outside Diameter
3/8"	17.1mm	2.1/2"	75mm
1/2"	21.3mm	3"	88.9mm
3/4"	26.7mm	4"	114.3mm
1"	33.4mm	5"	140mm
1.1/4"	42.2mm	6"	168.3mm
1.1/2"	48.3mm	8"	219.1mm
2"	60.3mm		

BS4504, PN16 Flange Gasket



1050	Size
SF16-12	1/2"
SF16-34	3/4"
SF16-1	1"
SF16-114	1.1/4"
SF16-112	1.1/2"
SF16-2	2"
SF16-3	3"
SF16-4	4"
SF16-6	6"

Tech Sheet 10254



BS10, Table E Flange Gasket

1050	Size
SF10-12	1/2"
SF10-34	3/4"
SF10-1	1"
SF10-114	1.1/4"
SF10-112	1.1/2"
SF10-2	2"
SF10-212	2.1/2"
SF10-3	3"
SF10-4	4"
SF10-6	6"

Tech Sheet 10254



PN16 Galvanised Backing Ring

1050	Size
GB16-12	1/2"
GB16-34	3/4"
GB16-1	1"
GB16-114	1.1/4"
GB16-112	1.1/2"
GB16-2	2"
GB16-212	2.1/2"
GB16-3	3"
GB16-4	4"
GB16-5	5"
GB16-6	6"
GB16-8	8"

Tech Sheet 10254

UPVC IMPERIAL PIPE SYSTEM



Valves

Economy Double Union Ball Valve, EPDM Seals



0118	Nominal Bore ID
BVD13-12-PVC	1/2"
BVD13-34-PVC	3/4"
BVD13-1-PVC	1"
BVD13-114-PVC	1.1/4"
BVD13-112-PVC	1.1/2"
BVD13-2-PVC	2"
BVD13-212-PVC	2.1/2"
BVD13-3-PVC	3"
BVD13-4-PVC	4"

Tech Sheet 10254

Industrial Double Union Ball Valve, EPDM Seals



0118	Nominal Bore ID
BVI13-38-PVC	3/8"
BVI13-12-PVC	1/2"
BVI13-34-PVC	3/4"
BVI13-1-PVC	1"
BVI13-114-PVC	1.1/4"
BVI13-112-PVC	1.1/2"
BVI13-2-PVC	2"
BVI13-212-PVC	2.1/2"
BVI13-3-PVC	3"
BVI13-4-PVC	4"

Tech Sheet 10254

Industrial 3 Way Ball Valve, L Port, EPDM Seals



0118	Nominal Bore ID
BVL13-12-PVC	1/2"
BVL13-34-PVC	3/4"
BVL13-1-PVC	1"
BVL13-114-PVC	1.1/4"
BVL13-112-PVC	1.1/2"
BVL13-2-PVC	2"

Tech Sheet 10254

Industrial 3 Way Ball Valve, T Port, EPDM Seals



0118	Nominal Bore ID
BVT13-12-PVC	1/2"
BVT13-34-PVC	3/4"
BVT13-1-PVC	1"
BVT13-112-PVC	1.1/2"
BVT13-2-PVC	2"

Tech Sheet 10254

Industrial Check Valve, EPDM Seals



0118	Nominal Bore ID
CVD13-12-PVC	1/2"
CVD13-34-PVC	3/4"
CVD13-1-PVC	1"
CVD13-114-PVC	1.1/4"
CVD13-112-PVC	1.1/2"
CVD13-2-PVC	2"

Tech Sheet 10254



For Air Blow Guns
...see pages 1549-1557

UPVC Tubing

NOTE: 6 metre length tube is available on a 3 to 5 working day delivery service. Specified delivery dates and times can not be guaranteed. Carriage is charged as an extra based on weight and delivery service required. Please speak to our sales department for further details.

Delivery of 3 metre lengths may take up to 48 hours.



Class C, 9 bar, 3 Metre Lengths

0118	Nominal Bore
UPVC/CTUBE-3-2	2"
UPVC/CTUBE-3-212	2.1/2"
UPVC/CTUBE-3-3	3"
UPVC/CTUBE-3-4	4"
UPVC/CTUBE-3-6	6"
UPVC/CTUBE-3-8	8"

Tech Sheet 10254

Class C, 9 bar, 6 Metre Lengths

0118	Nominal Bore
UPVC/CTUBE-6-2	2"
UPVC/CTUBE-6-212	2.1/2"
UPVC/CTUBE-6-3	3"
UPVC/CTUBE-6-4	4"
UPVC/CTUBE-6-5	5"
UPVC/CTUBE-6-6	6"

Tech Sheet 10254

Class E, 15 bar, 3 Metre Lengths

0118	Nominal Bore
UPVC/ETUBE-3-12	1/2"
UPVC/ETUBE-3-34	3/4"
UPVC/ETUBE-3-1	1"
UPVC/ETUBE-3-114	1.1/4"
UPVC/ETUBE-3-112	1.1/2"
UPVC/ETUBE-3-2	2"
UPVC/ETUBE-3-3	3"
UPVC/ETUBE-3-4	4"

Tech Sheet 10254

Class E, 15 bar, 6 Metre Lengths

0118	Nominal Bore
UPVC/ETUBE-6-12	1/2"
UPVC/ETUBE-6-34	3/4"
UPVC/ETUBE-6-1	1"
UPVC/ETUBE-6-114	1.1/4"
UPVC/ETUBE-6-112	1.1/2"
UPVC/ETUBE-6-2	2"
UPVC/ETUBE-6-3	3"
UPVC/ETUBE-6-4	4"

Tech Sheet 10254

UPVC IMPERIAL PIPE SYSTEM



UPVC Tubing



Class 7, Plain End, 3 Metre Lengths

0118	Size	Pipe OD mm	Pipe ID mm
UPVC/7TUBE-3-12	1/2"	21.4	13.4
UPVC/7TUBE-3-1	1"	33.6	24
UPVC/7TUBE-3-112	1 1/2"	48.3	37.3
UPVC/7TUBE-3-2	2"	60.3	48.3

Class 7, Plain End, 6 Metre Lengths

0118	Size	Pipe OD mm	Pipe ID mm
UPVC/7TUBE-6-112	1.1/2"	48.3	37.3

Threaded Adaptors

Equal, Plain x Threaded Female Stainless Steel Reinforced, BSPP



1050	Nominal Bore ID	Thread
ESRI-12	1/2"	1/2"
ESRI-34	3/4"	3/4"
ESRI-1	1"	1"
ESRI-2	2"	2"

Equal, Plain x Threaded Female



1050	Tube NB	Thread
ESI-12	1/2"	1/2"
ESI-34	3/4"	3/4"
ESI-1	1"	1"
ESI-114	1.1/4"	1.1/4"
ESI-112	1.1/2"	1.1/2"
ESI-2	2"	2"

Unions

Plain x Brass Composite Male Threaded Union, BSPP



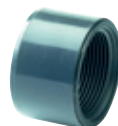
1050	Nominal Bore ID	Male BSPP
MBU-1	1"	1"

Plain x Brass Composite Female Threaded Union, BSPP



1050	Nominal Bore ID	Female BSPP
FBU-112	1.1/2"	1.1/2"

Reducing Bushes



Plain x Threaded Female, BSPP

1050	Nominal Bore ID	Thread
RB30-1238-UPVC	3/4"	1/2"



Threaded Male x Female, BSPP (Long Pattern)

1050	Male Thread	Female Thread
PVR112-1	1.1/2"	1"
PVR2-1	2"	1"
PVR212-112	2.1/2"	1.1/2"



Threaded Male x Female, BSPP (Short Pattern)

1050	Male Thread	Female Thread
PVRB34-12	3/4"	1/2"
PVRB1-34	1"	3/4"
PVRB114-1	1.1/4"	1"
PVRB112-114	1.1/2"	1.1/4"
PVRB2-112	2"	1.1/2"

Equal Hex Nipples



Equal, Male, BSPP

1050	Thread
PVN1	1"
PVN2	2"

Unequal Hex Nipples



Unequal, Male, BSPP

1050	Thread	Thread
PVRN1-34	1"	3/4"
PVRN112-114	1.1/2"	1.1/4"

Backnuts



Female, BSPP

1050	Thread
PVLN12	1/2"
PVLN1	1"
PVLN114	1.1/4"

Valve End



Female, BSPP

1050	Thread
TVI-2	2"

Valves



Standard Plain Single Union Ball Valve, EPDM Seals

0118	Nominal Bore ID
BVSU-34	3/4"
BVSU-1	1"
BVSU-114	1.1/4"
BVSU-112	1.1/2"



Standard Lever Operated Butterfly Valve, EPDM Liner

0118	Nominal Bore ID
BVBS-6	6"

Pipe Clips



Black PP Pipe Clips

1050	Nominal Bore ID	Type
IPPCLIP-12	1/2"	1
IPPCLIP-34	3/4"	1
IPPCLIP-1	1"	1
IPPCLIP-114	1.1/4"	2
IPPCLIP-112	1.1/2"	2
IPPCLIP-2	2"	2
IPPCLIP-212	2.1/2"	2
IPPCLIP-3	3"	2
IPPCLIP-4	4"	2
IPPCLIP-5	5"	3

Spacing Blocks



Black PP Spacing Block

1050	Nominal Bore ID
IPPSB-1	1" - 32mm
IPPSB-2	2" - 63mm

UPVC THREADED FITTINGS



Double Socket



Female, BSPP

1050	Thread
PVS12	1/2"
PVS34	3/4"
PVS1	1"
PVS114	1.1/4"
PVS112	1.1/2"
PVS2	2"

Reducing Socket



Female, BSPP

1050	Thread	Thread
PVRS12-38	1/2"	3/8"
PVRS34-12	3/4"	1/2"
PVRS1-34	1"	3/4"
PVRS114-1	1.1/4"	1"
PVRS112-114	1.1/2"	1.1/4"
PVRS2-112	2"	1.1/2"
PVRS3-212	3"	2.1/2"
PVRS4-3	4"	3"

Enlarging Piece



Male x Female, BSPP

1050	Male Thread	Female Thread
PVEN38-12	3/8"	1/2"
PVEN12-34	1/2"	3/4"
PVEN34-1	3/4"	1"
PVEN1-114	1"	1.1/4"
PVEN114-112	1.1/4"	1.1/2"
PVEN112-2	1.1/2"	2"
PVEN2-212	2"	2.1/2"
PVEN212-3	2.1/2"	3"
PVEN3-4	3"	4"

Reducing Male x Female



Male x Female, BSPP

1050	Male Thread	Female Thread
PVR12-38	1/2"	3/8"
PVR34-38	3/4"	3/8"
PVR34-12	3/4"	1/2"
PVR1-38	1"	3/8"
PVR1-12	1"	1/2"
PVR1-34	1"	3/4"
PVR114-12	1.1/4"	1/2"
PVR114-34	1.1/4"	3/4"
PVR114-1	1.1/4"	1"
PVR112-34	1.1/2"	3/4"
PVR112-1	1.1/2"	1"
PVR2-1	2"	1"
PVR2-114	2"	1.1/4"
PVR2-112	2"	1.1/2"
PVR212-112	2.1/2"	1.1/2"
PVR212-2	2.1/2"	2"
PVR3-112	3"	1.1/2"
PVR3-2	3"	2"
PVR3-212	3"	2.1/2"
PVR4-2	4"	2"
PVR4-212	4"	2.1/2"
PVR4-3	4"	3"

Reducing Bush Male x Female



Male x Female, BSPP

1050	Male Thread	Female Thread
PVRB34-12	3/4"	1/2"
PVRB1-34	1"	3/4"
PVRB114-1	1.1/4"	1"
PVRB112-114	1.1/2"	1.1/4"
PVRB2-112	2"	1.1/2"
PVRB212-2	2.1/2"	2"
PVRB3-212	3"	2.1/2"
PVRB4-3	4"	3"

Nipple



Male, BSPP

1050	Thread
PVN38	3/8"
PVN12	1/2"
PVN34	3/4"
PVN1	1"
PVN114	1.1/4"
PVN112	1.1/2"
PVN2	2"
PVN212	2.1/2"
PVN4	4"

Reducing Nipple



Male, BSPP

1050	Thread	Thread
PVRN34-12	3/4"	1/2"
PVRN1-34	1"	3/4"
PVRN114-1	1.1/4"	1"
PVRN112-114	1.1/2"	1.1/4"
PVRN212-2	2.1/2"	2"
PVRN3-212	3"	2.1/2"
PVRN4-3	4"	3"

RUST-OLEUM®



For Leak Seal
...see pages 1564

UPVC THREADED FITTINGS



Elbow 90°



Female, BSPP

1050	Thread
PVE12	1/2"
PVE34	3/4"
PVE1	1"
PVE114	1.1/4"
PVE112	1.1/2"
PVE2	2"
PVE212	2.1/2"
PVE3	3"

Elbow 45°



Female, BSPP

1050	Thread
PVE45-38	3/8"
PVE45-12	1/2"
PVE45-34	3/4"
PVE45-1	1"
PVE45-114	1.1/4"
PVE45-112	1.1/2"
PVE45-2	2"
PVE45-212	2.1/2"
PVE45-3	3"
PVE45-4	4"

Tee 90°



Female, BSPP

1050	Thread
PVT38	3/8"
PVT12	1/2"
PVT34	3/4"
PVT1	1"
PVT114	1.1/4"
PVT112	1.1/2"
PVT2	2"
PVT3	3"
PVT4	4"

Union



Female, BSPP

1050	Thread
PVU38	3/8"
PVU12	1/2"
PVU34	3/4"
PVU1	1"
PVU114	1.1/4"
PVU112	1.1/2"
PVU2	2"
PVU212	2.1/2"
PVU3	3"
PVU4	4"

Cap



Female, BSPP

1050	Thread
PVC38	3/8"
PVC12-CAP	1/2"
PVC34	3/4"
PVC1	1"
PVC114	1.1/4"
PVC112	1.1/2"
PVC2	2"
PVC212	2.1/2"
PVC3	3"
PVC4	4"

Plug



Male, BSPP

1050	Thread
PVP38	3/8"
PVP12	1/2"
PVP34	3/4"
PVP1	1"
PVP112	1.1/2"
PVP2	2"
PVP212	2.1/2"
PVP3	3"
PVP4	4"

Locknuts



Female, BSPP

1050	Thread
PVLN38	3/8"
PVLN12	1/2"
PVLN34	3/4"
PVLN1	1"
PVLN114	1.1/4"
PVLN112	1.1/2"
PVLN2	2"
PVLN212	2.1/2"
PVLN3	3"
PVLN4	4"



For Air Prep
...see pages 637-656

