



techhose

QUALITY CONNECTIONS

Hydraulics

Pneumatics
& Vacuum

Industrial

Compressed Air
& Ring Main

Process &
Instrumentation

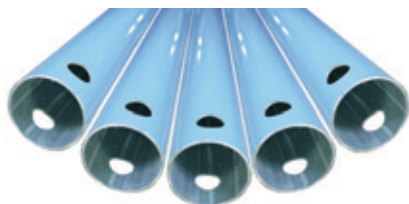
Ring Main

Aluminium & Plastic Systems

TRANSAIR RING MAIN SYSTEM AIR & VACUUM RANGE



Transair Aluminium Pipe



3 Metres, Single Lengths

1100	Tube OD mm	Tube ID mm
1003A.17.04.00	16.5	13
1003A.25.04.00	25	22
1003A.40.04.00	40	37
1003A.50.04	50	47
1003A.63.04	63	59

6 Metres, Per Pack

1100	Tube OD mm	Tube ID mm	Pack Size
1006A.25.04.00	25	22	6
1006A.40.04.00	40	37	6
1006A.50.04	50	47	5
1006A.63.04	63	59	4



2 Port 45° Threaded Wall Bracket, BSPP

1100	Female Thread
6690.21.21	1/2"

Transair Range



1 Port 45° Tube Wall Bracket, BSPP

1100	Tube OD mm	Female Thread
6639.17.21	16.5	1/2"
6639.25.21	25	1/2"



2 Port 45° Tube Wall Bracket, BSPP

1100	Tube OD mm	Female Thread
6682.17.21	16.5	1/2"
6682.25.21	25	1/2"



3 Port 45° Tube Wall Bracket, BSPP

1100	Tube OD mm	Female Thread
6695.25.21	25	1/2"



2 Port Horizontal Tube Wall Bracket, BSPP

1100	Tube OD mm	Female Thread
6681.17.21	16.5	1/2"
6681.25.21	25	1/2"



1 Port 45° Wall Bracket with Ball Valve

1100	Tube OD mm	Female Thread
6678.17.21	16.5	1/2"
6678.25.21	25	1/2"



2 Port 45° Wall Bracket with Ball Valve

1100	Tube OD mm	Female Thread
6693.17.21	16.5	1/2"
6693.25.21	25	1/2"



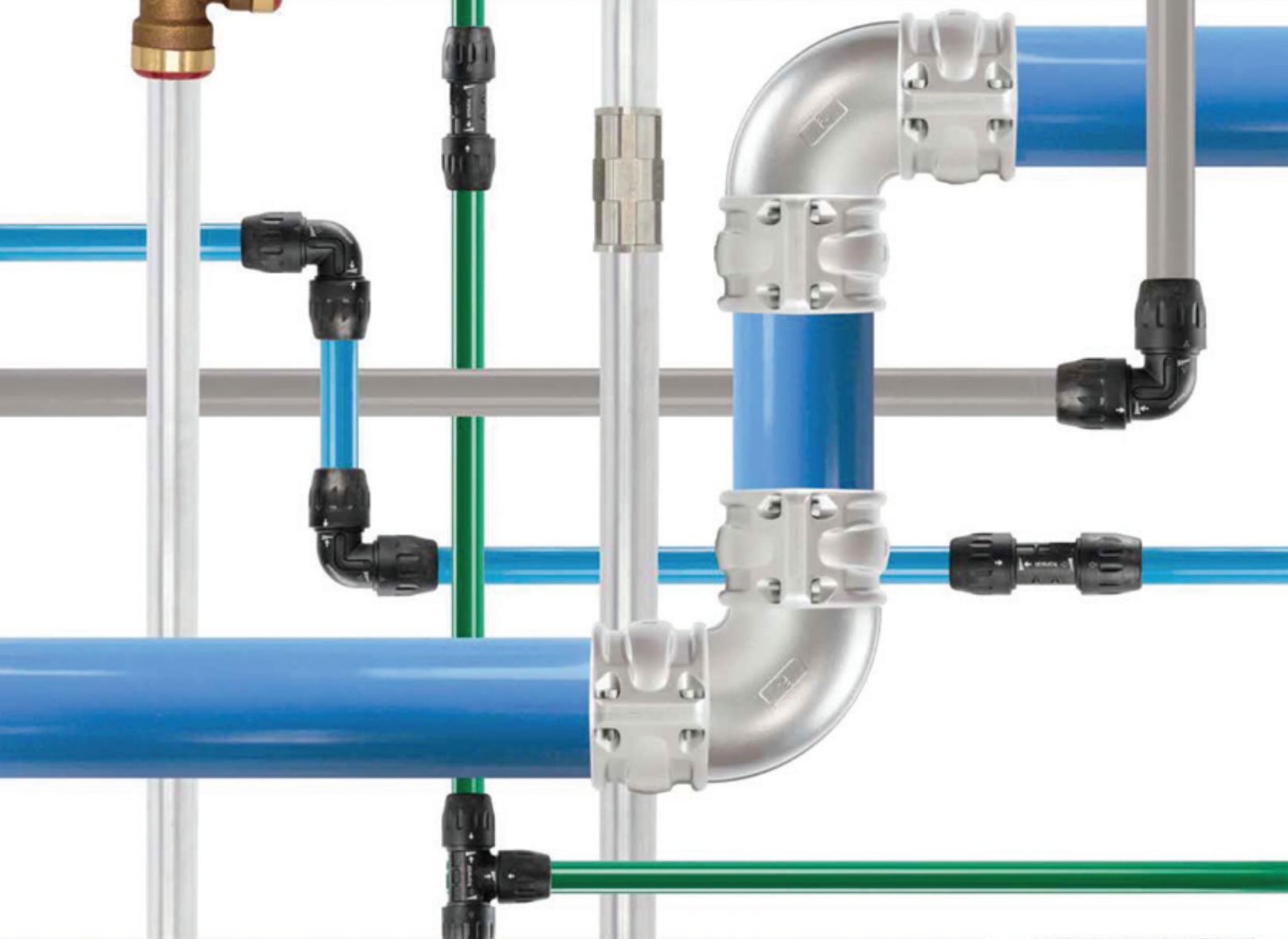
3 Port 45° Wall Bracket with Ball Valve

1100	Tube OD mm	Female Thread
6637.25.21	25	1/2"



Mini Bracket

1100	Tube OD mm	Female Thread
6661.25.21	25	1/2"
6661.40.21	40	1/2"
6661.40.27	40	3/4"
6661.50.21	50	1/2"
6661.50.27	50	3/4"
6662.63.21	63	1/2"



Transair: Modular Pipe Systems

- Lower pressure drop
- Air quality class 1-1-1
- Safest connection technologies
- Labour and installation time reduced
- Services to support your project



ENGINEERING YOUR SUCCESS.

TRANSAIR RING MAIN SYSTEM AIR & VACUUM RANGE



Transair Range



Reducing Bracket

1100	Tube OD A mm	Tube OD B mm
6662.25.17	25	16.5
6662.25.00	25	25
6662.40.17	40	16.5
6662.40.25	40	25
6662.50.25	50	25
6662.63.25	63	25



Quick Assembly Bracket with Ball Valve, BSPP

1100	Tube OD mm	Female Thread
6669.25.21	25	1/2"
6669.40.21	40	1/2"
6669.40.27	40	3/4"
6669.50.21	50	1/2"
6669.50.27	50	3/4"
6669.63.21	63	1/2"
6669.63.27	63	3/4"



Quick Assembly Direct Feed Bracket

1100	Tube OD A mm	Tube OD B mm
RA69.50.25	50	25



Quick Assembly Direct Feed Bracket, BSPP

1100	Tube OD mm	Female Thread
RA65.50.04	50	1/2"
RA65.50.08	50	1"



Pressurised System Outlet with Ball Valve

1100	Tube OD mm	Female Thread
EA98.50.04	50	1/2"



Male Stud, BSPT

1100	Tube OD mm	Male Thread
6605.17.13	16.5	1/4"
6605.17.21	16.5	1/2"
6605.25.21	25	1/2"
6605.25.27	25	3/4"
6605.25.34	25	1"
6605.40.34	40	1"
6605.40.42	40	1.1/4"
6605.40.49	40	1.1/2"
6605.50.49	50	1.1/2"
6605.50.48	50	2"
6605.63.48	63	2"



Male Stud BSPT with Fixing Plate

1100	Tube OD mm	Male Thread
6615.50.49	50	1.1/2"
6615.50.48	50	2"



Pipe to Pipe Connector

1100	Tube OD mm
6606.17.00	16.5
6606.25.00	25
6606.40.00	40
6606.50.00	50
6606.63.00	63



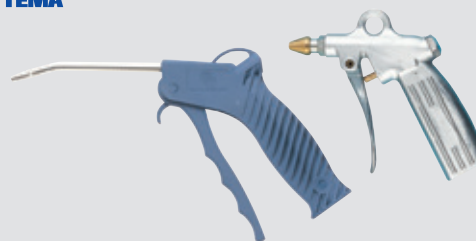
Plug-in Reducer

1100	Description
6666.17.25	25mm Pipe to 16.5mm Pipe
6666.25.40	40mm Pipe to 25mm Pipe



Plug-in Reducer

1100	Description
6666.40.50	50mm Pipe to 40mm Pipe
6666.50.63	63mm Pipe to 50mm Pipe



For Parker Blow Guns
see page 1596

TRANSAIR RING MAIN SYSTEM AIR & VACUUM RANGE



Transair Range



Vented End Cap

1100	Tube OD mm
6625.17.00	16.5
6625.25.00	25
6625.40.00	40
6625.50.00	50
6625.63.00	63



90° Elbow

1100	Tube OD mm
6602.17.00	16.5
6602.25.00	25
6602.40.00	40
6602.50.00	50
6602.63.00	63



Reducing Tee

1100	Tube OD A mm	Tube OD B mm
6604.50.25	50	25
6604.50.40	50	40



90° Elbow Male Stud, BSPT

1100	Tube OD mm	Male Thread
6609.17.13	16.5	1/4"
6609.17.21	16.5	1/2"
6609.25.21	25	1/2"
6609.25.27	25	3/4"
6609.25.34	25	1"
6609.40.34	40	1"
6609.40.42	40	1.1/4"
6609.50.49	50	1.1/2"
6609.50.48	50	2"
6609.63.48	63	2"



45° Elbow

1100	Tube OD mm
6612.25.00	25
6612.40.00	40
6612.63.00	63



Lockable Aluminium Valve

1100	Tube OD mm
4092.17.00	16.5
4092.25.00	25
4092.40.00	40
4092.50.00	50
4092.63.00	63



Equal Tee

1100	Tube OD mm
6604.17.00	16.5
6604.25.00	25
6604.40.00	40
6604.50.00	50
6604.63.00	63



Flexible Hose

1100	Tube OD mm	Length Metres
1001E.250001	25	0.57
1001E.250004	25	2



For Parker Legris Tubing
see pages 906-908



TRANSAIR RING MAIN SYSTEM AIR & VACUUM RANGE



Clips, Clamps, Spacers & Tools



Fixing Clip For Rigid Pipe

1100	Tube OD mm
6697.17.00	16.5
6697.25.00	25
6697.40.00	40
6697.50.00	50
6697.63.00	63



Transair Clips & Spacers

1100	Description
6697.00.03	Spacer Block for Fixing Clip
6697.00.02	Clip Adaptor for Rod M8 x 1 Male x M10 x 1.5 Female



Transair Beam Clamps

1100	Description
6699.03.01	Screw Type Beam Clamp 16.5mm to 40mm
ER99.06.02	Screw Type Beam Clamp 63mm to 100mm for M8 Screw
ER99.06.03	Screw Type Beam Clamp 63mm to 100mm for M10 Screw



Transair Tube Cutter

1100	Description
6698.03.01	Tube Cutter for 16.5mm to 63mm Pipe



Transair Tools

1100	Description
6698.04.02	Deburring Tool for Rigid Aluminium Pipe 16.5mm to 100mm
6698.04.01	Chamfer Tool for Rigid Aluminium Pipe 16.5mm to 40mm
6698.04.03	Marking Tool for Rigid Aluminium Pipe 16.5mm to 40mm
6698.05.03	Tightening Spanners for 63mm Nuts



Transair Drilling Jig

1100	Description
6698.01.03	Drilling Jig 25 to 63mm



Transair Drilling Tool

1100	Description
6698.02.02	Drilling Tool for 25mm Pipe
6698.02.01	Drilling Tool for 40mm & 63mm Pipe

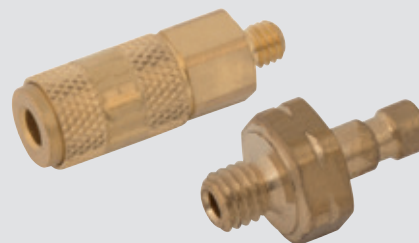


Tool Case

1100	Description
6698.00.05	Complete Kit 16.5mm to 63mm



For Parker Rectus QRC's
see pages 330-390



WHY CHOOSE AIRCOM?



AIRCOM PIPE



STANDARD PIPE

EXPANDABILITY ACCORDING TO REQUIREMENTS

The system grows with the plant.

ELIMINATE WASTED AIR AND LEAKS

Our components in aluminium, technopolymer and HIP guarantee superior, above-average performance.

EASY, RAPID INSTALLATION

Reduction in labor costs and ease of intervention.

MODULAR DESIGN

Flexibility of use and greater adaptability to the specific usage requirements.

OPTIMUM, CONSTANT PERFORMANCE

Constant energy savings over time.

OUR SERVICES

AIRCOM services support our Partners throughout the plant's entire life cycle: from the initial consultancy to support during design.



TECHNICAL TRAINING

We offer advanced training and periodic update courses for our Partners' technical personnel (designers, installers, dealers).



RATIONALISING ENERGY CONSUMPTION

Thanks to the wide choice of components and the flexibility of the systems, as well as to computer simulations, our piping systems help reduce energy costs to the lowest levels possible, in a consistent manner over time: the system pays for itself.



SUPPORT FOR DESIGNERS

We support our Partners at every step, from the more basic plants to the highly complex systems, assisting in totally new designs as well as in revamping and additions to existing structures.



ADVANCED SOFTWARE

We have developed proprietary software to provide support in plant sizing and on site design. Thanks to this software, our Partners can offer the end user a complete, efficient and personalized service.

RING MAIN SYSTEM

Coated Aluminium Pipe



Compressed Air, 5.8 Metres, Blue

9191	Ø mm
QLTUAL020S	20
QLTUAL025S	25
QLTUAL032S	32
QLTUAL040S	40
QLTUAL050S	50
QLTUAL063S	63
QLTUAL080S	80
QLTUAL110S	110

Tech Sheet 110821

Compressed Air, 4 Metres, Blue

9191	Ø mm
QLTUAL4016S	16
QLTUAL4020S	20
QLTUAL4025S	25
QLTUAL4032S	32
QLTUAL4040S	40
QLTUAL4050S	50
QLTUAL4063S	63

Tech Sheet 110821



Vacuum, 5.8 Metres, Grey

9191	Ø mm
QLTUALGY020S	20
QLTUALGY025S	25
QLTUALGY032S	32
QLTUALGY040S	40
QLTUALGY050S	50
QLTUALGY063S	63
QLTUALGY080S	80

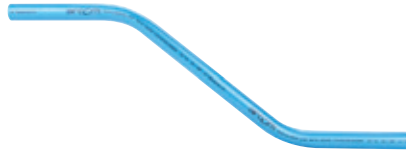
Tech Sheet 110821



Nitrogen, 5.8 Metres, Green

9191	Ø mm
QLTUALG020S	20
QLTUALG025S	25
QLTUALG040S	40
QLTUALG063S	63

Tech Sheet 110821



Double Bend

9191	Ø mm
QLSCI016	16
QLSCI020	20
QLSCI025	25

Tech Sheet 110821

Multilayer Bendable Pipe



Compressed Air, 50 Metres

9191	Ø mm
QLTUMLST016	16
QLTUMLST020	20
QLTUMLST025	25

Tech Sheet 110841

Technopolymer Pipe



Compressed Air, 4 Metres

9191	Ø mm
AIRTU020S	20
AIRTU025S	25
AIRTU032S	32
AIRTU040S	40

Tech Sheet 110842

You might also need
Pipe & Tube Cutters
see pages 1743-1746



TECHNOPOLYMER SYSTEM



LIGHTWEIGHT, BUT POWERFUL

The Quick Line technopolymer product range comes in the following diameters:

16, 20, 25, 32, 40, 50 and 63 mm

A careful study and design of dimensions and materials enable us to achieve a light and functional, all-technopolymer product in a wide range of sizes, allowing you to create your aluminium tubing systems without any problems.



SHORT INSTALLATION TIME

The quick and easy assembly of our piping systems is the result of an innovative technology, with an instant connection of the fitting components to the aluminium pipe.

AIR QUALITY AND MAINTENANCE

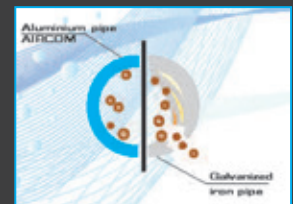
Owing to full technopolymer construction, air quality keeps constant features from compressor outlet up to all end user points. Minimum roughness of internal pipe surfaces allows optimal air flow. The high quality and high resistance features of our fittings will significantly reduce maintenance costs.

MODULARITY AND RESISTANCE

Our modular and lightweight technopolymer systems are an optimal solution to reduce installation time.

Owing to careful study of components and of materials, our fittings feature noticeable resistance to corrosion, mechanical shocks and thermal variations.

Quick Line technopolymer is the most advanced evolution in the field of systems for compressed air and pressurised fluids distribution.



TECHNOPOLYMER SYSTEM FITTINGS

Technopolymer fittings are specifically designed for use with Aluminium tube up to Ø 63mm.
For specific application guidance please speak to our technical team.

Working Temperature:
-15°C to +65°C

Straight Couplings



Equal, Tube x Tube

9183	Ø mm
QLMAPA016	16
QLMAPA020	20
QLMAPA025	25
QLMAPA032	32
QLMAPA040	40
QLMAPA050	50
QLMAPA063	63

Tech Sheet 110822



Reducer, Tube x Tube

9183	Ø mm	Ø mm
QLRIDPA025020	25	20
QLRIDPA032025	32	25
QLRIDPA040025	40	25
QLRIDPA040032	40	32
QLRIDPA050040	50	40

Tech Sheet 110822



Sliding Coupling Tube x Tube (No Internal Stopper)

9183	Ø mm
QLMASPA032	32
QLMASPA040	40
QLMASPA050	50
QLMASPA063	63

Tech Sheet 110822



Male Stud, BSPT Thread x Tube

9183	Ø mm	Thread
QLMNPA016048	16	1/2"
QLMNPA020048	20	1/2"
QLMNPA020068	20	3/4"
QLMNPA025048	25	1/2"
QLMNPA025068	25	3/4"
QLMNPA025088	25	1"
QLMNPA032088	32	1"
QLMNPA032108	32	1.1/4"
QLMNPA040088	40	1"
QLMNPA040108	40	1.1/4"
QLMNPA040128	40	1.1/2"
QLMNPA050128	50	1.1/2"
QLMNPA050168	50	2"
QLMNPA063168	63	2"

Tech Sheet 110822

Elbows



90° Equal, Tube x Tube

9183	Ø mm
QLG090PA016	16
QLG090PA020	20
QLG090PA025	25
QLG090PA032	32
QLG090PA040	40
QLG090PA050	50
QLG090PA063	63

Tech Sheet 110822



45° Equal, Tube x Tube

9183	Ø mm
QLG045PA020	20
QLG045PA025	25
QLG045PA032	32
QLG045PA040	40
QLG045PA050	50
QLG045PA063	63

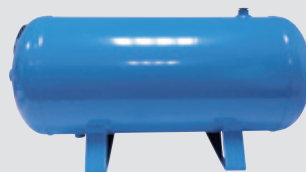
Tech Sheet 110822



90° Male Stud, BSPT x Tube

9183	Ø mm	Thread
QLG090PM020048	20	1/2"
QLG090PM025048	25	1/2"
QLG090PM025068	25	3/4"

Tech Sheet 110822



For Air Receivers
see pages 433-434

Free design services available for reducing energy costs

TECHNOPOLYMER SYSTEM FITTINGS

Technopolymer fittings are specifically designed for use with Aluminium tube up to Ø 63mm.
For specific application guidance please speak to our technical team.

Working Temperature:
-15°C to +65°C

Tees



Equal Tube x Tube

9183	Ø mm
QLTEPA016	16
QLTEPA020	20
QLTEPA025	25
QLTEPA032	32
QLTEPA040	40
QLTEPA050	50
QLTEPA063	63

Tech Sheet 110822



Unequal, Reducing on Branch, Tube x Tube

9183	Ø mm	Ø mm
QLTRPA020016	20	16
QLTRPA025016	25	16
QLTRPA025020	25	20
QLTRPA032020	32	20
QLTRPA032025	32	25
QLTRPA040020	40	20
QLTRPA040025	40	25
QLTRPA040032	40	32
QLTRPA050020	50	20
QLTRPA050025	50	25
QLTRPA050032	50	32
QLTRPA050040	50	40
QLTRPA063020	63	20
QLTRPA063025	63	25
QLTRPA063040	63	40
QLTRPA063050	63	50

Tech Sheet 110822



Female Stud BSPP, 3.06 mm, Branch x Tube

9183	Ø mm	Thread
QLTPPA020048	20	1/2"
QLTPPA025048	25	1/2"

Tech Sheet 110822

Quick Branch, Saddle Clamp



Tube x Tube

9183	Ø mm	Ø mm
QLDERPA025016	25	16
QLDERPA025020	25	20
QLDERPA032016	32	16
QLDERPA032020	32	20
QLDERPA040016	40	16
QLDERPA040020	40	20
QLDERPA040025	40	25
QLDERPA050016	50	16
QLDERPA050020	50	20
QLDERPA050025	50	25
QLDERPA063020	63	20
QLDERPA063025	63	25
QLDERPA063032	63	32
QLDERPA080020	80	20
QLDERPA080025	80	25
QLDERPA080032	80	32
QLDERPA110025	110	25
QLDERPA110032	110	32

Tech Sheet 110822



Female BSPP x Tube

9183	Ø mm	Thread
DIRDERFF025048	25	1/2"
DIRDERFF032048	32	1/2"
DIRDERFF040048	40	1/2"
DIRDERFF040068	40	3/4"
DIRDERFF050048	50	1/2"
DIRDERFF050068	50	3/4"
DIRDERFF063048	63	1/2"
DIRDERFF063068	63	3/4"
DIRDERFF063088	63	1"
DIRDERFF080048	80	1/2"
DIRDERFF080068	80	3/4"
DIRDERFF080088	80	1"
DIRDERFF110068	110	3/4"
DIRDERFF110088	110	1"

Tech Sheet 110822

End Caps



Tube

9183	Ø mm
QLCAPA016	16
QLCAPA020	20
QLCAPA025	25
QLCAPA032	32
QLCAPA040	40
QLCAPA050	50
QLCAPA063	63

Tech Sheet 110822

Assembly Tools



QL Nut Wrench

9183	Ø mm	Ø mm
QLCLE16020	16	20
QLCLE25032	25	32
QLCLE40050	40	50
QLCLE63	63	63

Tech Sheet 110822



Pipe Fitting Insertion Meter

9183	Ø mm	Ø mm
QLMIS016080	16	80

Tech Sheet 110822

VALVES

Ball Valve Stainless Steel



Tube x Tube

9183	Ø mm
QLVAINOX025	25
QLVAINOX032	32
QLVAINOX040	40
QLVAINOX050	50
QLVAINOX063	63
QLVAINOX080	80

Tech Sheet 110823



Female BSPP x Tube

9183	Ø mm	Thread
QLVAINOXMF025088	25	1"
QLVAINOXMF032128	32	1.1/2"
QLVAINOXMF040128	40	1.1/2"
QLVAINOXMF050168	50	2"
QLVAINOXMF063168	63	2"
QLVAINOXMF080248	80	2"

Tech Sheet 110823

Ball Valve Nickel Plated Brass



Female BSPP x Tube

9183	Ø mm	Thread
QLVAF016048	16	1/2"
QLVAF020048AL	20	1/2"
QLVAF025068AL	25	3/4"

Tech Sheet 110823



Male BSPT x Tube

9183	Ø mm	Thread
QLVAM016048	16	1/2"
QLVAM020048AL	20	1/2"
QLVAM025068AL	25	3/4"

Tech Sheet 110823

Butterfly Valve Stainless Steel



Tube x Tube

9183	Ø mm
QLVALFAR110	110

Tech Sheet 110823



For Ball Valves
see pages 922-955

ALUMINIUM SYSTEM



LIGHTWEIGHT, BUT POWERFUL

The Quick Line aluminium product range comes in the following diameters:

20, 25, 32, 40, 50, 63, 80, and 110 mm

A careful study and design of dimensions and materials enable us to achieve a lightweight but powerful, all-aluminium product in a wide range of sizes. With the Ø 110 mm size you will have a powerful flow rate potential, allowing you to create compressor rooms without any problems.



SHORT INSTALLATION TIME

The quick and easy assembly of our piping systems is the result of an innovative technology, with an instant connection of the fitting components to the aluminium pipe.

AIR QUALITY AND MAINTENANCE

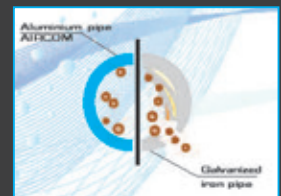
Owing to full aluminium construction, air quality keeps constant features from compressor outlet up to all end user points. Minimum roughness of internal pipe surfaces allows optimal air flow. The high quality and high resistance features of our fittings will significantly reduce maintenance costs.

MODULARITY AND RESISTANCE

Our modular and lightweight aluminium systems are an optimal solution to reduce installation time.

Owing to careful study of components and of materials, our fittings feature noticeable resistance to corrosion, mechanical shocks and thermal variations.

Quick Line aluminium is the most advanced evolution in the field of systems for compressed air and pressurised fluids distribution.



FITTINGS, ALUMINIUM SYSTEM

Swap your Aluminium fittings for echnopolymer fittings for sizes up to Ø 63mm to reduce installation costs. For specific application guidance please speak to our echnical team.

 Working Temperature:
-30°C to +80°C

Straight Couplings



Equal, Tube x Tube

9183	Ø mm
QLMAAL020	20
QLMAAL025	25
QLMAAL032	32
QLMAAL040	40
QLMAAL050	50
QLMAAL063	63
QLMAAL080	80
QLMAAL110	110

Tech Sheet 110824



Sliding Coupling, Tube x Tube (No Internal Stopper)

9183	Ø mm
QLMASAL032	32
QLMASAL040	40
QLMASAL050	50
QLMASAL063	63
QLMASAL080	80

Tech Sheet 110824



Female Stud, BSPP Thread x Tube

9183	Ø mm	Thread
QLMPMAL020048	20	1/2"
QLMPMAL020068	20	3/4"
QLMPMAL025068	25	3/4"
QLMPMAL025088	25	1"
QLMPMAL032108	32	1.1/4"
QLMPMAL040128	40	1.1/2"
QLMPMAL050168	50	2"
QLMPMAL063208	63	2.1/2"

Tech Sheet 110824



Male Stud, BSPT Thread x Tube

9183	Ø mm	Thread
QLMNMAL020048	20	1/2"
QLMNMAL020068	20	3/4"
QLMNMAL025068	25	3/4"
QLMNMAL025088	25	1"
QLMNMAL032108	32	1.1/4"
QLMNMAL040128	40	1.1/2"
QLMNMAL050168	50	2"
QLMNMAL063168	63	2"
QLMNMAL063208	63	2.1/2"
QLMNMAL080208	80	2.1/2"
QLMNMAL080248	80	3"

Tech Sheet 110824

Elbows



90° Equal, Tube x Tube

9183	Ø mm
QLG090AL020	20
QLG090AL025	25
QLG090AL032	32
QLG090AL040	40
QLG090AL050	50
QLG090AL063	63
QLG090AL080	80
QLG090AL110	110

Tech Sheet 110824



45° Equal, Tube x Tube

9183	Ø mm
QLG045AL020	20
QLG045AL025	25
QLG045AL032	32
QLG045AL040	40

Tech Sheet 110824



45° Female Stud, BSPP x Tube

9183	Ø mm	Thread
QLG045FAL020048	20	1/2"
QLG045FAL025048	25	1/2"
QLG045FAL025068	25	3/4"

Tech Sheet 110824



90° Male Stud, BSPT x Tube

9183	Ø mm	Thread
QLG090MAL020048	20	1/2"
QLG090MAL025048	25	1/2"
QLG090MAL025068	25	3/4"

Tech Sheet 110824

Free design services available for reducing energy costs

FITTINGS, ALUMINIUM SYSTEM

Tees



Equal, Tube x Tube

9183	Ø mm
QLTEAL020	20
QLTEAL025	25
QLTEAL032	32
QLTEAL040	40
QLTEAL050	50
QLTEAL063	63
QLTEAL080	80
QLTEAL110	110

Tech Sheet 110824



Unequal, Reducing on Branch, Tube x Tube

9183	Ø mm	Ø mm
QLTRAL025020	25	20
QLTRAL032020	32	20
QLTRAL040020	40	20
QLTRAL040025	40	25

Tech Sheet 110824



Female Stud BSPP, Branch x Tube

9183	Ø mm	Thread
QLTPAL020048	20	1/2"
QLTPAL025068	25	3/4"
QLTPAL032088	32	1"
QLTPAL040108	40	1.1/4"
QLTPAL050128	50	1.1/2"
QLTPAL063168	63	2"
QLTPAL080208	80	2.1/2"
QLTPAL110248	110	3"

Tech Sheet 110824

End Caps



Equal, Tube x Tube

9183	Ø mm
QLCAAL020	20
QLCAAL025	25
QLCAAL032	32
QLCAAL040	40
QLCAAL050	50
QLCAAL063	63
QLCAAL080	80

Tech Sheet 110824

Blind Flange



Tube

9183	Ø mm
DIRFC110DIN	110

Tech Sheet 110824

Quick Branch (Saddle Clamp)



Tube x Tube

9183	Ø mm	Ø mm
QLDERAL025020	25	20
QLDERAL032020	32	20
QLDERAL040020	40	20
QLDERAL040025	40	25
QLDERAL050020	50	20
QLDERAL050025	50	25
QLDERAL063020	63	20
QLDERAL063025	63	25
QLDERAL063032	63	32
QLDERAL080020	80	20
QLDERAL080025	80	25
QLDERAL080032	80	32
QLDERAL110020	110	20
QLDERAL110025	110	25
QLDERAL110032	110	32

Tech Sheet 110824

Flanged Couplings



Flange x Tube

9183	Ø mm	DIN Flange
QLMFLAL080248DIN	80	3"
QLMFLAL110328DIN	110	4"

Tech Sheet 110824



Flange x Stem

9183	Ø mm	DIN Flange
QLTFLAL80248DIN	80	3"
QLTFLAL110328DIN	110	4"

Tech Sheet 110824

Assembly Tools



QL Nut Wrench for Aluminium

9183	Ø mm	Ø mm
QLCLEAL020025	20	25
QLCLEAL032040	32	40
QLCLEAL050	50	50
QLCLEAL063	63	63
QLCLEAL080	80	80

Tech Sheet 110824



Pipe Fitting Insertion Meter

9183	Ø mm	Ø mm
QLMISAL020110	20	110

Tech Sheet 110824

Free design services available for reducing energy costs

6" (168.3MM) TUBING & FITTINGS SYSTEM

A full range of ready-to-use, pre-grooved 168.3 mm - 6" aluminium products.

In large industrial sites, main compressed air distribution networks need a flow rate of 3,000 ³ per hour.

Compatibility and Specification

Deliverable Fluids:

- Compressed air
- Inert gases
- Vacuum
- Other (please contact sales office for more information)

Vacuum Level:

99% (about 10 mbar) approximately



Working Temperature:
-30°C to +80°C



Maximum Working Pressure:
12 bar

Coated Aluminium Pipe with Grooved Ends



Compressed Air, 5.8 Metres, Blue

9260	Ø mm
QLTUAL168S	168.3
Tech Sheet 110825	

Elbow with Grooved Ends



90° Equal, Tube x Tube

9260	Ø mm
QLGO90AL168	168.3
Tech Sheet 110825	



45° Equal, Tube x Tube

9260	Ø mm
QLGO45AL168	168.3
Tech Sheet 110825	

Tee with Grooved Ends



Equal, Tube x Tube

9260	Ø mm
QLTEAL168	168.3
Tech Sheet 110825	

Straight Rigid Coupling with Grooved Ends



Equal, Tube x Tube

9260	Ø mm
QLMAAL168	168.3
Tech Sheet 110825	

End Caps with Grooved Ends



Tube

9260	Ø mm
QLCAAL168	168.3
Tech Sheet 110825	

Expansion Joint



Flanged DIN

9260	Ø mm
DIRDIL168DIN	168.3
Tech Sheet 110825	

DIRDIL168DIN requires 1x QLFLA168480DIN on each side.

Flanged Adaptor



Tube x Flange DIN

9260	Ø mm	DIN Flange
QLFLA168480DIN	168.3	4"
Tech Sheet 110825		

Butterfly valve



Flange DIN Coupling

9260	Ø mm
QLVALFAR168	168.3
Tech Sheet 110825	

Pipe Bracket



M10 Insert Pieces

9260	Ø mm	Insert
DIRFEM10168CF	168.3	M10
Tech Sheet 110825		

Portable Manual Grooving Tool for 6" (168.3 mm) Tube



Manual Operation with Ratchet Handle

9260	Ø mm
DIRRULLUNI	168.3
Tech Sheet 110825	

MANIFOLDS, ALUMINIUM TUBING SYSTEM

Single Port



1/2" BSPP Inlet x 1/2" BSPP Outlet, with Drain Option, 1/4" (Blind)

9183	No. of Inlets	No. of Outlets
DIRAPMAL048048	1	1
Tech Sheet 110826		



With Fitting Holder Safety Block

9183	Inlet mm	Outlet
DAPG045FAL020048	20	1/2"
DAPG045FAL025048	25	1/2"
DAPG045FAL025068	25	3/4"
Tech Sheet 110826		

Double Port



1/2" BSPP Inlet x 1/2" BSPP Outlet, with Drain Option, 1/4" (Blind)

9183	No. of Inlets	No. of Outlets
APLALL048	1	2
Tech Sheet 110826		

3/4" BSPP Inlet x 1/2" BSPP Outlet, with Drain Option, 1/4" (Blind)

9183	No. of Inlets	No. of Outlets
APLALL068	1	2
Tech Sheet 110826		

3 Port



1/2" BSPP Inlet x 1/2" BSPP Outlet, with Drain Option, 1/4" (Blind)

9183	No. of Inlets	No. of Outlets
DIRAPFRLAL048048	1	3
Tech Sheet 110826		

4 Port



1/2" BSPP Inlet x 1/2" BSPP Outlet, with Drain Option, 1/4" (Blind)

9183	No. of Inlets	No. of Outlets
DIRAPLAL048048	1	4
Tech Sheet 110826		

3/4" BSPP Inlet x 1/2" BSPP Outlet, with Drain Option, 1/4" (Blind)

9183	No. of Inlets	No. of Outlets
DIRAPLAL068068	1	4
Tech Sheet 110826		

5 Port



3/4" BSPP Inlet x 3/4" & 1/2" BSPP Outlet, with Drain Option, 1/4" (Blind)

9183	No. of Inlets	No. of Outlets A (side)	No. of Outlet B (front)
DIRPMUAL120	1	2	3
Tech Sheet 110826			

6 Port



3/4" BSPP Inlet x 3/8" BSPP Outlet, No Drain

9183	No. of Inlets	No. of Outlets
APLALLMUL068038	1	6
Tech Sheet 110826		

1/2" BSPP Inlet x 3/4" BSPP Outlet, No Drain

9183	No. of Inlets	No. of Outlets
APLALLMUL068048	1	6
Tech Sheet 110826		

7 Port



3/4" BSPP Inlet x 1/2" BSPP Outlet, with Drain Option, 1/4" (Blind)

9183	No. of Inlets	No. of Outlets
DIRPMUAL200	1	7
Tech Sheet 110826		

Drain Valve



1/4" BSPP Male

9183	Thread
DIRVSP028	1/4"
Tech Sheet 110826	

SYSTEM ACCESSORIES

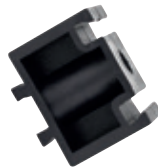
Pipe Brackets



M8 Insert Pieces

9183	Ø mm	Insert
DIRFEM8016CF	16	M8
DIRFEM8020CF	20	M8
DIRFEM8025CF	25	M8
DIRFEM8032CF	32	M8
DIRFEM8040CF	40	M8
DIRFEM8050CF	50	M8
DIRFEM8063CF	63	M8
DIRFEM8080CF	80	M8
DIRFEM8110CF	110	M8

Tech Sheet 110827



Pipe Bracket Spacers

9183	Ø mm	Ø mm
DIRSPE020032	20	32
DIRSPE040063	40	63

Tech Sheet 110827

Assembly Lubrication



Lubrication Fluid (Oil Free)

9183	Size ml
DIRLUB0750	750

Tech Sheet 110844

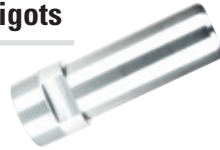


Lubrication Gel (Oil Free)

9183	Size ml
DIRLUBGEL0950	950

Tech Sheet 110827

Aluminium Spigots



Male BSPP x Stem

9183	Ø mm	Thread
QLPUNM016038	16	3/8"
QLPUNM020048	20	1/2"
QLPUNM020068	20	3/4"
QLPUNM025088	25	1"
QLPUNM032108	32	1.1/4"
QLPUNM040128	40	1.1/2"
QLPUNM050168	50	2"
QLPUNM063168	63	2"
QLPUNM080248	80	3"

Tech Sheet 110827

Reduction Pipe

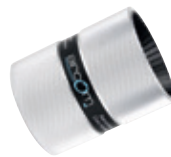


Stem x Stem

9183	Ø mm	Ø mm
QLRIDTU025020	25	20
QLRIDTU032020	32	20
QLRIDTU032025	32	25
QLRIDTU040025	40	25
QLRIDTU040032	40	32
QLRIDTU050032	50	32
QLRIDTU050040	50	40
QLRIDTU063040	63	40
QLRIDTU063050	63	50
QLRIDTU080050	80	50
QLRIDTU080063	80	63
QLRIDTU110050	110	50
QLRIDTU110063	110	63
QLRIDTU110080	110	80

Tech Sheet 110827

Deburrers



To suit Tube Sizes 16mm - 110mm

9183	Ø mm	Ø mm
DIRSM016050	16	50
DIRSM063110	63	110

Tech Sheet 110827



To suit Tube Sizes 16mm - 168.3mm

9183	Ø mm	Nominal Bore mm
DIRSBVUNI	16	168.3

Tech Sheet 110827

Multilayer Pipe Bending Tools



Bending Gun

9260	Ø mm	Ø mm
DIRPIEGTMLS1625	16	25

Tech Sheet



Calibrator & Chamfering Tool

9260	Ø mm	Ø mm
DIRCALML016025	16	25

Tech Sheet 110827



Outer Bending Spring

9260	Ø mm
DIRMOLMLEST016	16
DIRMOLMLEST020	20
DIRMOLMLEST025	25

Tech Sheet 110827



Inner Bending Spring

9260	Ø mm
DIRMOLMLINT016	16
DIRMOLMLINT020	20
DIRMOLMLINT025	25

Tech Sheet 110827

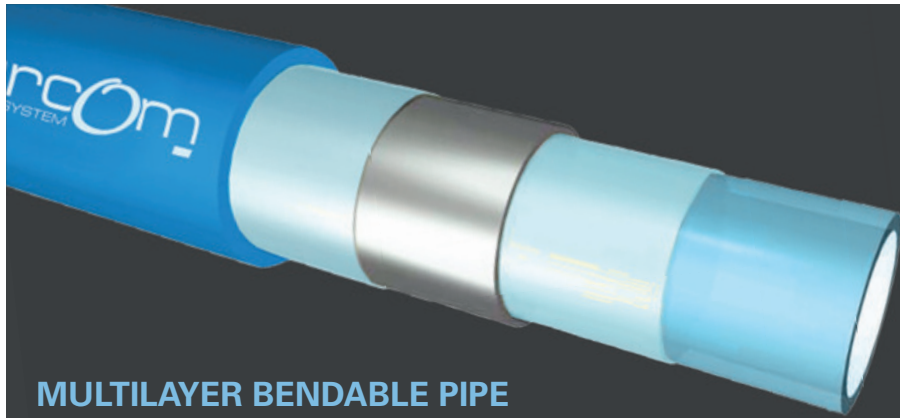
Flexible Hoses



Stem x Stem

9183	Ø mm
QLFLEX020	20
QLFLEX025	25
QLFLEX032	32
QLFLEX040	40
QLFLEX063	63

Tech Sheet 110827



MULTILAYER BENDABLE PIPE

Bendable, resistant & specific for compressed air

Due to its unique structure, Aircom's multilayer pipe for compressed air delivers excellent physical and chemical features, typical of PE-RT.

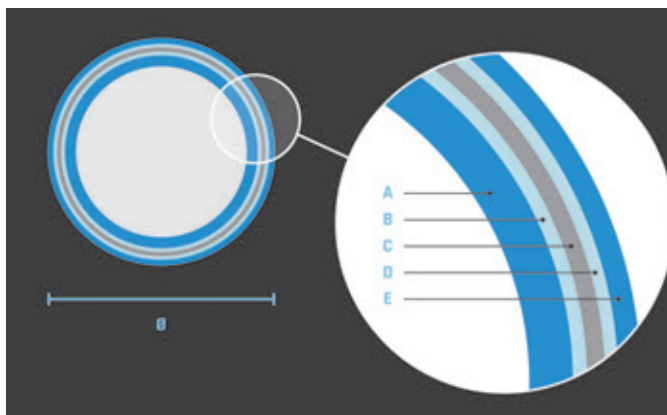
The structure of the multilayer pipe incorporates an aluminium layer, providing resistance to high pressures and high operating temperatures.

The lightness of the material enables easy shaping of piping sections, making installation trouble-free even in problem areas.

AIRCOM'S MULTILAYER PIPE ADVANTAGES

- ✓ Specifically for compressed air piping.
- ✓ Easy creation of shaped piping sections.
- ✓ Easy to fit around obstacles, corners, pillars, etc.
- ✓ Easy installation owing to its bendability.
- ✓ Linear thermal expansion factor similar to aluminium pipe.
- ✓ Corrosion resistant.
- ✓ Outstanding durability.

LAYERS AND MATERIALS



- A PE-RT (inner layer, colourless)
- B Adhesive layer
- C Aluminium layer, overlapped and ultrasonic welded
- D Adhesive layer
- E PE-RT (outer layer, blue)



AIR PIPE LINE "INFINITY" SERIES

Complete selection of fittings and aluminum pipes for air networks.

Patented drop fitting solution and more special features

Fastest assembly operations with ready-to-use and reusable fittings for all sizes

10 year warranty.

MADE IN ITALY


EXCELLENT SOLUTIONS
IN FLUIDTECHNOLOGY

ALUMINIUM RING MAIN SYSTEM



Working Temperature:
-20°C to +80°C

Maximum Working Pressure:
16 bar

Material:
Adaptors: Brass, Nickel Plated
(Ø 50-63 Aluminium), Nitrile Seals
Silicone free

Application:
Compressed air, Vacuum,
Inert gas (NITROGEN-ARGON)

Compliance:
2014/68/EU(PED), REACH EC N°1907/2006,
ROHS 2011/65/EU, ASME B31.1, B31.3

Aluminium Tubing

Tubing may take up to 3 working days to be delivered, dependant on weight and delivery address location. Addition carriage charges may apply. For full details please contact sales.



4 Metre Lengths

0255	OD mm
90000011Y9B5	20
90000011J4B5	25
90000011J9B5	32
90000011K4B5	40
90000011W0B5	50
90000011W3B5	63

Tech Sheet 1609

6 Metre Lengths

0255	OD mm
900006020BL	20
900006025BL	25
900006032BL	32
900006040BL	40
900006050BL	50
900006063BL	63

Tech Sheet 1609

Straight Adaptors



Male Thread, BSPT

0255	OD mm	Thread
9001000001	20	1/2"
9001000009	20	3/4"
9001000011	25	1/2"
9001000002	25	3/4"
9001000003	32	1"
9001000013	40	1"
9001000004	40	1.1/4"
9001000007	40	1.1/2"
9001000014	50	1"
9001000005	50	1.1/2"
9001000012	50	2"
9001000006	63	2"
9001000008A	63	2.1/2"

Tech Sheet 1610

Female Thread, BSPP

0255	OD mm	Thread
9003000001	20	1/2"
9003000002	25	3/4"
9003000003	32	1"
9003000004	40	1.1/4"

Tech Sheet 1610



Elbow Adaptors



Male Thread, BSPT

0255	OD mm	Thread
9015000001	20	1/2"
9015000002	25	3/4"
9015000003	32	1"

Tech Sheet 1611



Female Thread, BSPP

0255	OD mm	Thread
9016000001	20	1/2"
9016000002	25	3/4"
9016000003	32	1"
9016000004	40	1.1/4"

Tech Sheet 1611



Bracketed, Female Thread, BSPP

0255	OD mm	Thread
9060000001	20	1/2"
9060000002	25	3/4"
9060000003	32	1"

Tech Sheet 1611

Tee Adaptors



Female Thread, BSPP

0255	OD mm	Thread
9023600006	20	3/8"
9023600007	20	1/2"
9023600001	25	3/8"
9023600008	25	1/2"
9023600002	32	1/2"
9023600003	40	1/2"
9023600017A	63	1/2"
9023600005	63	3/4"
9023600018A	63	1"

Tech Sheet 10557

Tee Adaptors with Condense Exhaust



Female Thread, BSPP

0255	OD mm	Thread
9025000017A	63	1/2"

Tech Sheet 10557

Straight Connectors



Equal

0255	OD mm
9004000001	20
9004000002	25
9004000003	32
9004000004	40
9004000006	63

Tech Sheet 1614

ALUMINIUM RING MAIN SYSTEM



Elbow Connectors



Equal 90°

0255	OD mm
9013000001	20
9013000002	25
9013000003	32
9013000004	40
9013000005	50
9013000006	63

Tech Sheet 1611



Equal 135°

0255	OD mm
9014000001	20
9014000002	25
9014000003	32
9014000004	40
9014000005	50

Tech Sheet 1611

Tee Connectors



Equal

0255	OD mm
9023000001	20
9023000002	25
9023000003	32
9023000004	40
9023000005	50
9023000006	63

Tech Sheet 10559



Equal and Reducing Branch

0255	OD mm	OD mm
9023500013	20	20
9023500001	25	20
9023500002	32	20
9023500003	32	25
9023500004	40	20
9023500005	40	25
9023500008	50	25

Tech Sheet 10564

Tee Connectors with Condense Exhaust



Equal and Reducing Branch

0255	OD mm
9025900001	20-20-20
9025900002	25-20-25
9025900003	32-20-32
9025900004	40-20-40
9025900005	50-20-50

Tech Sheet 10559

End Caps



0255	OD mm
9061000001	20
9061000002	25
9061000003	32
9061000004	40
9061000006	63

Tech Sheet 1612

Reducers



0255	OD mm	OD mm
9062000001	25	20
9062000002	32	20
9062000003	32	25
9062000005	40	25
9062000006	40	32
9062000011	50	25
9062000007	50	32
9062000008	50	40
9062000009A	63	40
9062000010A	63	50

Tech Sheet 1613

Deburring Tool



For Aluminium Tubing 20-40mm

0255
9088000001

Support Collars



Technopolymer, M6 Thread

0255	OD mm
9081500001	20
9081500002	25
9081500003	32
9081500004	40
9081500005	50
9081500006	63

Tech Sheet 10567



Spacer

0255
9081700001

Tech Sheet 60110

Wall Mount Female Manifolds, Aluminium



BSPP

0255	OD mm	Thread
9060200001	20	1/2"
9060200002	25	1/2"

Tech Sheet 10560



2 Way, BSPP

0255	Inlet Size	Outlet Size	No of Outlets
9064200001	1/2"	1/2"	2
9064200002	3/4"	1/2"	2

Tech Sheet 10576



4 Way, BSPP

0255	Inlet Size	Outlet Size	No of Outlets
9064400001	1/2"	1/2"	4
9064400002	3/4"	1/2"	4

Tech Sheet 10577

ALUMINIUM RING MAIN SYSTEM



Wall Mount Female Manifolds, Plastic

Working Temperature:
-20°C to +50°C

Maximum Working
Pressure: 15 bar



Type VDK 10, BSPP

0255	Inlet Size	Outlet Size	No of Outlets
VDK10	1/2"	1/2"	1



Type VDK 138, BSPP

0255	Inlet Size	Outlet Size	No of Outlets
VDK138	1/2"	3/8"	1



Type VDK 20, BSPP

0255	Inlet Size	Outlet Size	No of Outlets
VDK20	1/2"	1/2"	2



Type VDK 21, BSPP

0255	Inlet Size	Outlet Size	No of Outlets
VDK21	2 x 1/2"	1/2"	2



Type VDK 30, BSPP

0255	Inlet Size	Outlet Size	No of Outlets
VDK30	3/4"	1/2"	3

Type VDK 31, BSPP

0255	Inlet Size	Outlet Size	No of Outlets
VDK31	2 x 3/4"	1/2"	3



Type VDK 34, BSPP

0255	Inlet Size	Outlet Size	No of Outlets
VDK34	1/2"	1/2"	3



Type VDK 35, BSPP

0255	Inlet Size	Outlet Size	No of Outlets
VDK35	2 x 1/2"	1/2"	3

Saddle Clamp Connectors



0255	OD A mm	OD B mm
9024000004	32	25
9024000006	40	25
9024000007	50	20
9024000010	63	20
9024000011	63	25

Tech Sheet 10565

Tube Drilling Jigs & Drill Bits



Tube Drilling Jigs

0255	OD mm
9024200001	32
9024200002	40
9024200004	63

Tech Sheet 10567



Drill Bits for Drilling Jig

0255	To Suit
9024100001	32 & 40
9024100002	50 & 63

Tech Sheet 10566

Ball Valves



Tube x Tube

0255	OD mm
9070000001	20
9070000002	25
9070000003	32
9070000004	40
9070000005	50
9070000006	63

Tech Sheet 10570



Tube x Male Thread, BSPT

0255	OD mm	Thread
9072000001	20	1/2"
9072000002	25	3/4"

Tech Sheet 10572

AIRNET PIPEWORK SYSTEM

Airnet Aluminium Air Pipe



Blue Compressed Air Pipe, 5.70m Lengths

1450	Size mm	Length Metres	Quantity
2811-4000-05	40	5.70	5



Blue S Bends

1450	Size mm
2811-1067-05	20 x 440
2811-2067-05	25 x 460

Airnet Connectors

Equal Straight Connector

1450	Size mm
2811-1002-80	20
2811-2002-80	25
2811-4002-80	40
2811-5002-80	50



Reducing Straight Connector

1450	Size mm
2811-2121-80	25 to 20
2811-4221-80	40 to 25



Male Stud Connector

1450	Size
2811-1017-80	20mm x R1/2"
2811-2117-80	25mm x R3/4"
2811-2217-80	25mm x R1"
2811-4417-80	40mm x R1.1/2"
2811-5417-80	50mm x R1.1/2"
2811-5517-80	50mm x R2"
2811-6517-80	63mm x R2"
2811-6617-80	63mm x R2.1/2"
2811-7717-80	80mm x R3"



Wall Mounting Connector ISO228

1450	Inlet mm	Outlet BSPP
2811-1023-80	20	1/2" x 3
2811-2023-80	25	1/2" x 3



Wall Mounting Connector Threaded

1450	Inlet	Outlet
2811-0025-80	1/2"	1/2" x 1
2811-1025-80	3/4"	1/2" x 1



End Cap

1450	Size mm
2811-1006-80	20
2811-2006-80	25
2811-4006-80	40
2811-5006-80	50



For **Condensate Management**
see page 435



AIRNET PIPEWORK SYSTEM



Airnet Elbows & Tees



Equal 90° Elbow

1450	Size mm
2811-1003-80	20
2811-2003-80	25
2811-4003-80	40
2811-5003-80	50
2811-6003-80	63



Equal 45° Elbow

1450	Size mm
2811-2004-80	25
2811-4004-80	40



Equal Tee

1450	Size mm
2811-1005-80	20
2811-2005-80	25
2811-4005-80	40



Reducing Tee

1450	Size A mm	Size B mm
2811-4107-80	40	20
2811-4207-80	40	25



Reducing Tee, Threaded Branch

1450	Inlet/Outlet mm	Reduced Branch
2811-1008-80	20	G1/2"
2811-2008-80	25	G1/2"
2811-2108-80	25	G3/4"
2811-4208-80	40	G1"
2811-5208-80	50	G1"



For Air Receivers &
Accessories
see pages 433-435

Airnet Quickdrops & Ball Valves



Quickdrop

1450	Inlet mm	Outlet mm
2811-2110-80	25	20
2811-4110-80	40	20



Quickdrop, Threaded Outlet

1450	Inlet mm	Outlet
2811-2011-80	25	G1/2"



Ball Valve

1450	Size mm
2811-1051-81	20
2811-2051-81	25
2811-4051-81	40



Ball Valve Airnet to ISO228 Female

1450	Size
2811-1152-81	20mm x G3/4"
2811-2252-81	25mm x G1"
2811-4452-81	40mm x G1.1/2"

Airnet Piping Accessories



Pipe Clips

1450	Size mm	Connection
2811-1022-20	20	M6
2811-2022-20	25	M6
2811-4022-20	40	M6



Screw Beam Clamp

1450	Size	Range mm
2810-0036-10	M8	1.5 - 11



Hang Clamp H Profil

1450	Size	Range mm
2810-0038-10	M8	1.5 - 4



Sealing Gel

1450	Volume Litres
2810-0148-00	1

Airnet Installation Tool Kits



PF Series Installation Spanner

1450	Size mm
2811-1028-00	20 - 50



Black Series Installation Spanner

1450	Size mm
2811-6028-00	63 - 80



Belt Spanner

1450	Description
2810-8028-00	Covers 40 - 80 mm



Pipe Deburrer

1450	Size mm
2810-0141-00	20 - 50



Hole Deburrer Pen

1450	Type
2810-0641-00	Heavy-duty



PF Series Tool Kit

1450	Size mm
2811-0045-00	Install Kit to suit 20-50mm Airnet Range



Electrical Pipe Cutter

1450	Voltage
2810-0540-80	220 - 230

RINGMAIN PIPE KITS (CARM)

Simple, easy to install, basic air pipe systems at competitive pricing

Introducing **John Guest Compressed Air Ring Main (CARM) Kits** - the ultimate solution for compressed air piping systems installation. These kits come in three configurations, catering to 15 and 22 mm, and contain all the essential components for hassle-free assembly. No specialized knowledge or expensive equipment is needed, making it the go-to option for small ring-main installations.

Versatile kits for any project:

- Workshops
- Garages
- Domestic applications
- Extension onto existing pipe systems

1 Bay Kit, 15mm Pipe & Fittings

- 1 x bay kit of John Guest 15mm O.D pipe and fittings
- 4 x 3m lengths of 15mm nylon pipe.
- 8 x pipe clips.
- 2 x elbows.
- 1 x flex with 1/2" bsp male stem adaptor.
- 1 x straight connector.
- 1 brass wingback wall bracket with 1 x PCL 19 series coupling

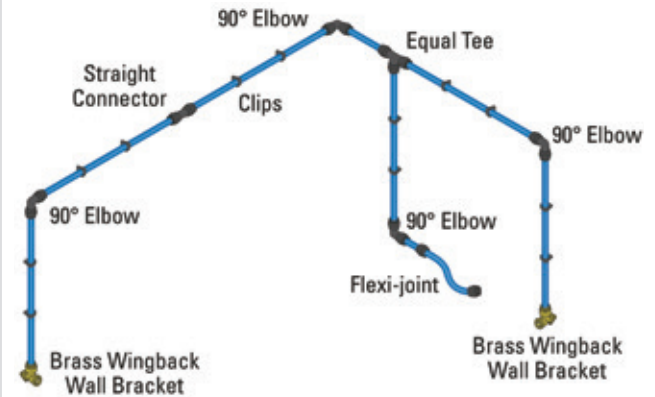


1400

CARMKIT-1

2 Bay Kit, 15mm Pipe & Fittings

- 2 x bay kit of John Guest 15mm OD pipe and fittings
- 6 x 3 metre lengths nylon pipe.
- 12 x clips.
- 4 x elbows.
- 1 x flex 15 with 1/2" bsp male stem adaptor.
- 2 x brass wingback wall brackets.
- 1 x straight connector.
- 1 x tee and 2 PCL 19 series couplings.

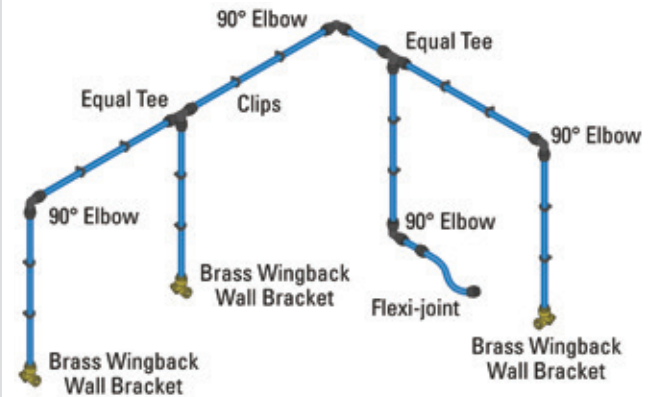


1400

CARMKIT-2

3 Bay Kit, 22mm Pipe & Fittings

- 3 x bay kit of John Guest 22mm OD pipe and fittings
- 7 x 3 metre lengths nylon pipe.
- 14 x pipe clips.
- 4 x elbows.
- 1 x flex 22 with 1/2" bsp, male stem adaptor.
- 3 x brass wingback wall brackets.
- 2 x straight connector.
- 2 x tee.
- 3 x PCL 19 series couplings and 3 x 3/4 x 1/2 reducing bush.
- 1 x PTFE Tape



1400

CARMKIT-3

Easy to use Push-fit connectors for air line ring mains

The John Guest range of push-fit fittings and pipe provide the ideal connection from compressor receiver to air line service components through to complete ring main and take off points.

Using the John Guest push-fit system, a compressed air ring main can be installed quickly and easily, with potential time savings of at least 50% when compared to other installation methods.

No need to prepare threaded pipe or solvent, all the connections can be made with a simple push-fit action. The system is then immediately ready for use.

Complex assembly can be performed much more rapidly than with traditional methods and because fittings are easy to disconnect, systems can be altered or extended with much reduced production down time.

To make a connection, the tube is simply pushed in by hand, with the unique collet locking system then holding the tube firmly in place without deforming it or restricting flow.

**The fittings are produced in either tough engineering plastics material or in brass with Sizes 12mm to 28mm. They are intended for use with John Guest's nylon pipe, but can also be used with copper or aluminum alternatives.*

Working Temperature:

-20°C to +70°C

Working Pressure:

10 bar @ 23°C



Making a connection

Standard Fittings



Cut the pipe square

We recommend using the JG Pipe Cutter.



Push up to pipe stop



Pull to check secure

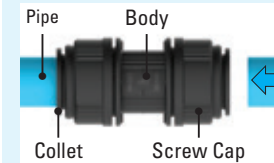
Test the system before use.



To disconnect

Ensure the system is depressurised. Push the collet towards the fitting and remove the pipe. The fitting can be reused.

28mm Fittings



28mm fittings also have a collet with stainless steel teeth and an 'O' ring.



After inserting the pipe, a screw cap is turned approx 1/4 turn. This locks the collet in place and reduces lateral and sideways movement of the pipe.



To disconnect

Turn the screw cap 1/4 turn, push in the collet and remove the pipe. The fitting and pipe can be reused.

FAST-TRACK RING MAIN SYSTEM

Fast-Track Tubing

John Guest Part No. Cross Reference

400-3012	PA-RM1209-3M-20B
400-3015	PA-RM1512-3M-20B
400-3018	PA-RM1814-3M-20B
400-3022	PA-RM2218-3M-20B
400-3028	PA-RM2823-3M-10B

Working Temperature:
-20°C to +70°C

Maximum Working Pressure:
+23°C: 10 bar
+70°C: 7 bar



Nylon 12, 3 Metre Lengths

1400	OD mm	ID mm
400-3012	12	9
400-3015	15	12
400-3018	18	14
400-3022	22	18
400-3028	28	23

Tech Sheet 20629

N.B. Delivery may take up to 48 hours.

Working Temperature:
-20°C to +70°C

Maximum Working Pressure:
+23°C: 10 bar
+70°C: 7 bar



Blue Coated Aluminium, 3 Metre Lengths

1400	OD mm	ID mm
AL-RM1210-3M-20B	12	10
AL-RM1513-3M-20B	15	13
AL-RM1816-3M-20B	18	16
AL-RM2220-3M-20B	22	20
AL-RM2826-3M-10B	28	26

Tech Sheet 20629

N.B. Delivery may take up to 48 hours.

Fast-Track Tube Clips



360° Pipe Retention, Tested to over 100lbs

1400	OD mm
405-1015	15
405-1022	22
405-1028	28
410-1522	Stand-off Spacer

Tech Sheet 20629

U-Bend



1400	OD mm
PMUB15E	15

Tech Sheet 20629

Straight Adaptor

* No thread seal.



BSPP Male

1400	OD mm	Thread
PM011213E	12	3/8"
PM011214E	12	1/2"
PM011514E	15	1/2"
PM011516E	15	3/4"
PM011814E	18	1/2"
PM012216E	22	3/4"

Tech Sheet 20629

Stem Adaptor



BSPP Male

1400	OD mm	Thread
PM051213E	12	3/8"
PM051214E	12	1/2"
PM051513E	15	3/8"
PM051514E	15	1/2"
PM051814E	18	1/2"
PM052214E	22	1/2"
PM052216E	22	3/4"

Tech Sheet 20629

Equal Elbow



1400	OD mm
PM0312E	12
PM0315E	15
PM0318E	18
PM0322E	22
PM0328E	28

Tech Sheet 20629

Stem Elbow



1400	OD mm	Stem OD mm
PM221212E	12	12
PM221515E	15	15
PM221818E	18	18
PM222222E	22	22

Tech Sheet 20629

Equal Tee



1400	OD mm
PM0212E	12
PM0215E	15
PM0218E	18
PM0222E	22

Tech Sheet 20629

Reducing Tee



1400	Ends OD mm	Branch OD mm
PM03018AE	18	15
PM3022AE	22	15

Tech Sheet 20629

FAST-TRACK RING MAIN SYSTEM

Straight Connector



1400	OD mm
PM0412E	12
PM0415E	15
PM0418E	18
PM0422E	22
PM0428E	28

Tech Sheet 20629

Reducer



1400	Stem OD mm	OD mm
PM061512E	15	12
PM061815E	18	15
PM062215E	22	15
PM062218E	22	18
PM062815E	28	15

Tech Sheet 20629

Flexi-joint

When long runs of nylon tube are used, it is recommended a flexi-joint is installed. With temperature change, the tube can expand and contract along the length. This will lead to an unsightly distortion to the run of tube.



1400	OD mm	Max Pressure PSI
FLEX-15	15	145
FLEX-22	22	145

Tech Sheet 20629

Plug



Black

1400	OD mm
PM0812R	12
PM0815E	15
PM0818E	18
PM0822E	22
PM0828E	28

Tech Sheet 20629

Release Aid



1400	OD mm
15RA	15
22RA	22

Tech Sheet 20629

Brass Straight Adaptors



BSPT Male

1400	OD mm	Thread
MM011504N	15	1/2"
MM012206N	22	3/4"
MM012808N	28	1"

Tech Sheet 20629

Brass Wingback Elbow



BSPP Female

1400	OD mm	Thread
PM15WB	15	1/2"
PM22WB	22	3/4"

Tech Sheet 20629

Brass Stem Adaptors



Male Thread

1400	OD mm	Thread
MM051504N	15	1/2" BSPT
MM052206N	22	3/4" BSPT
MM052818N	28	1" BSPT
MM052228N	22	1" NPT
MM052828N	28	1" NPT

Tech Sheet 20629



BSPP Female

1400	OD mm	Thread
MM501514N	15	1/2"
MM502216N	22	3/4"

Tech Sheet 20629



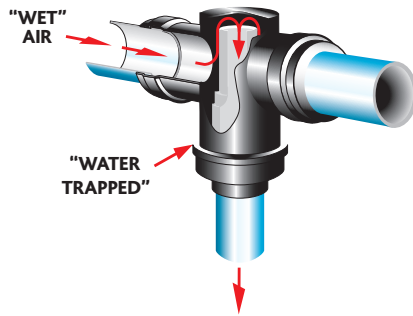
You might also need...
Polyurethane & Nylon Tube
 ...see pages 895-917



FAST-TRACK RING MAIN SYSTEM

Water Trap Tee

The Fast-Track Water Trap Tee solves the on-going problem of moisture in a Ring Main system and provides the easy alternative to the need to install "Swan Necks". The ingenious inside arrangement of the fitting allows air to flow, with minimum head loss, from the main to take-off point without allowing water to follow. The moisture is retained in the line to be drawn off at some suitable location.



Water Trap Tee Installation:

It is of vital importance for the correct function of the Water Trap Tee that the air ring main within which the Tee is installed is near horizontal and that the outlet port faces vertically downwards. Markings to indicate correct orientation have been moulded onto the body to assist installation.



1400	OD mm
PMTT22E	22
Tech Sheet 20629	

Water Trap Tee Convertor



Converts a 28mm Tee to a Water Trap Tee

1400	Size mm
WTC28	28
Tech Sheet 20629	

Collet Covers

Collet Covers prevent accidental removal or tampering with piping. The pipe can be inserted with the Collet Cover already attached to the fitting or the cover can slide into position afterwards.

We recommend covers be fitted when pipework is hidden inside walls, ceilings etc.

Collet Covers can be removed to allow the pipe to be disconnected as and when required.



Black

1400	OD mm
PM1915E	15
PM1922E	22
Tech Sheet 20629	

Pipe Clips & Spacers

Clip



Spacer



Black

1400	Description	OD mm
PC15E	Clip	15
PC22E	Clip	22
PC28E	Clip	28
PCSE	Spacer	-
Tech Sheet 20629		

Pipe Cutters

Please Note: No spare blades available for this cutter.

The blade can be resharpened.



1400	Max Reach mm
JG-TSP	22
Tech Sheet 20629	

Aluminium Pipe Cutter



1400	OD mm
ALU-CUTTER15	15
ALU-CUTTER22	22
ALU-CUTTER28	28
Tech Sheet 20629	

End Stop



1400	OD mm
PM4612E	12
PM4615E	15
PM4622E	22
Tech Sheet 20629	

Porting Block



1/2" BSPP Female

1400	Outlets
JG-L-WSK	5 x 1/2" BSPP
Tech Sheet 20629	

Aluminium Wall Box



BSPP

1400	Inlet Size	Outlet Size	No. of Outlets
JGWALLBOX 1/2	1/2"	1/2"	3
JGWALLBOX 3/4	3/4"	1/2"	3
Tech Sheet 20629			

Applications:

- Drinkable water systems
- Irrigation systems
- Fertilizing irrigation systems
- Wine, beer, beverages and other alimentary fluids
- Industrial equipment for acid bases and salts
- Swimming pools with fresh or sea water
- Ship Installations

Materials:

- Body and nut: polypropylene
- O-ring: nitrile
- Clenching ring: polyacetal resin
- Metal reinforcements: stainless steel

Maximum Working Temperature:
+80°C

Maximum Working Pressure:
16 bar, atmospheric at 20°C up to 63mm bore
10 bar, atmospheric at 20°C from 75mm bore

NOTE: Materials fully conform with the international specification relating to Hygiene and Sanitary Requirements for the Transport of Potable Water and Alimentary Fluids.

Straight Connector



Tube x Tube

0116	OD mm
PE-701.016	16
PE-701.020	20
PE-701.025	25
PE-701.032	32
PE-701.040	40
PE-701.050	50
PE-701.063	63
PE-701.075	75
PE-701.110	110

Reducing Coupling



Tube x Tube

0116	OD mm	OD mm
PE-702.020	20	16
PE-702.025	25	20
PE-702.031	32	20
PE-702.032	32	25
PE-702.040	40	32
PE-702.049	50	32
PE-702.063	63	50

End Plug



Tube

0116	OD mm
PE-705.020	20
PE-705.025	25
PE-705.032	32
PE-705.050	50
PE-705.063	63

Female Adaptor



BSPT

0116	OD mm	Thread
PE-703.016	16	1/2"
PE-703.020	20	1/2"
PE-703.022	20	3/4"
PE-703.024	25	1/2"
PE-703.025	25	3/4"
PE-703.027	25	1"
PE-703.031	32	3/4"
PE-703.032	32	1"
PE-703.039	40	1"
PE-703.040	40	1.1/4"
PE-703.050	50	1.1/2"
PE-703.063	63	2"
PE-703.075	75	2.1/2"
PE-703.090	90	3"
PE-703.110	110	4"

Male Adaptor



BSPT

0116	OD mm	Thread
PE-704.016	16	1/2"
PE-704.020	20	1/2"
PE-704.021	20	3/4"
PE-704.024	25	1/2"
PE-704.025	25	3/4"
PE-704.026	25	1"
PE-704.031	32	3/4"
PE-704.032	32	1"
PE-704.033	32	1.1/4"
PE-704.039	40	1"
PE-704.040	40	1.1/4"
PE-704.041	40	1.1/2"
PE-704.049	50	1.1/4"
PE-704.050	50	1.1/2"
PE-704.051	50	2"
PE-704.063	63	2"
PE-704.074	75	2"
PE-704.075	75	2.1/2"
PE-704.090	90	3"

90° Equal Elbows



Tube x Tube

0116	OD mm
PE-706.016	16
PE-706.020	20
PE-706.025	25
PE-706.032	32
PE-706.040	40
PE-706.050	50
PE-706.063	63
PE-706.090	90



Male, BSPT

0116	OD mm	Thread
PE-707.020	20	1/2"
PE-707.024	25	1/2"
PE-707.025	25	3/4"
PE-707.031	32	3/4"
PE-707.032	32	1"
PE-707.050	50	1.1/2"
PE-707.063	63	2"



Female, BSPT

0116	OD mm	Thread
PE-708.020	20	1/2"
PE-708.024	25	1/2"
PE-708.025	25	3/4"
PE-708.031	32	3/4"
PE-708.032	32	1"
PE-708.050	50	1.1/2"
PE-708.063	63	2"

90° Equal Tee



Tube x Tube

0116	OD mm
PE-709.020	20
PE-709.025	25
PE-709.032	32
PE-709.040	40
PE-709.050	50
PE-709.063	63
PE-709.075	75



Male, BSPT

0116	OD mm	Thread
PE-711.020	20	1/2"
PE-711.025	25	3/4"
PE-711.032	32	1"
PE-711.050	50	1.1/2"
PE-711.063	63	2"



Female, BSPP

0116	OD mm	Thread
PE-710.020	20	1/2"
PE-710.024	25	1/2"
PE-710.025	25	3/4"
PE-710.031	32	3/4"
PE-710.032	32	1"
PE-710.040	40	1.1/4"
PE-710.050	50	1.1/2"
PE-710.090	90	3"

Wall Support Bracket



BSPP

0116	OD mm	Thread
PE-712.020	20	1/2"
PE-712.025	25	3/4"

90° Reducing Tee



Branch

0116	OD mm	OD mm
PE-713.025	25	20
PE-713.032	32	25
PE-713.063	63	50

Compression Flange

Conforms to the following standards:

UNE EN-712, UNE EN-713, UNE EN-715, UNE EN-714, ISO 351, ISO 3503, ISO 3458, ISO 3459, DIN 8076, ISO 7, ISO 228, DIN 2999, DIN 259



Tube

0116	OD mm
PE-714.050	50
PE-714.063	63
PE-714.075	75
PE-714.090	90

Pipe Liner



0116	To Suit Hose OD mm
PE-780020	20
PE-780025	25
PE-780032	32

Repair Coupling



Tube x Tube

0116	OD mm
PE-725020	20
PE-725025	25
PE-725032	32
PE-725050	50
PE-725075	75

Spanner



0116	To Suit
PE-776001	20mm to 32mm
PE-776002	40mm to 63mm
PE-776003	20mm to 63mm
PE-776004	75mm to 110mm

MDPE Pipes



Blue

0116	OD mm	Length Metres
PE-MDPE20BLU	20	100
PE-MDPE25BLU	25	100
PE-MDPE32BLU	32	100
PE-MDPE63BLU	63	100



Black

0116	OD mm	Length Metres
PE-MDPE20BLK	20	100
PE-MDPE25BLK	25	100
PE-MDPE32BLK	32	100
PE-MDPE63BLK	63	100

POLYETHYLENE PIPE UNIVERSAL TRANSITION FITTINGS



Universal Fittings

This Universal STP Kit is compatible with any fitting, allowing the transition between pipes of any material with diameters from 15mm to 35mm (1/2" to 1" and polyethylene pipes between 16mm to 63mm.



Universal Fittings

0116	Inlet mm	Outlet
PE-715.020	15-22	To suit 25mm Body
PE-715.025	21-27	To suit 32mm Body
PE-715.032	27-35	To suit 40mm Body

Tech Sheet 20360

Rubber adaptor suitable for all STP fittings that allow the transition from copper (15-16 mm) to galvanised or UPVC (1/2").



For Copper Tubing

0116
PE-000.715

Couplings



Tube x Tube

0116	OD A mm	OD A	OD B mm
PE-716016	15-22	1/2"	16
PE-716020	15-22	1/2"	20
PE-716025	15-22	1/2"	25
PE-716032	15-22	1/2"	32
PE-716040	15-22	1/2"	40
PE-717020	21-27	3/4"	20
PE-717025	21-27	3/4"	25
PE-717032	21-27	3/4"	32
PE-717040	21-27	3/4"	40
PE-717050	21-27	3/4"	50
PE-718025	27-35	1"	25
PE-718032	27-35	1"	32
PE-718040	27-35	1"	40
PE-718050	27-35	1"	50
PE-718063	27-35	1"	63
PE-719032	35-50	1.1/2"	32
PE-719040	35-50	1.1/2"	40
PE-719050	35-50	1.1/2"	50
PE-719063	35-50	1.1/2"	63

Adaptors



Male, BSPT

0116	OD mm	OD	Thread
PE-721020	15-22	1/2"	1/2"
PE-721021	15-22	1/2"	3/4"
PE-721022	15-22	1/2"	1"
PE-721025	21-27	3/4"	3/4"
PE-721026	21-27	3/4"	1"
PE-721027	21-27	3/4"	1.1/4"
PE-721032	27-35	1"	1"
PE-721033	27-35	1"	1.1/4"
PE-721034	27-35	1"	1.1/2"
PE-721040	35-50	1.1/2"	1.1/4"
PE-721041	35-50	1.1/2"	1.1/2"
PE-721042	35-50	1.1/2"	2"



Female, BSPP

0116	OD mm	OD	Thread
PE-720020	15-22	1/2"	1/2"
PE-720021	15-22	1/2"	3/4"
PE-720022	15-22	1/2"	1"
PE-720026	21-27	3/4"	1"
PE-720032	27-35	1"	1"
PE-720033	27-35	1"	1.1/4"
PE-720041	35-50	1.1/2"	1.1/2"

End Caps



Tube

0116	OD mm	OD
PE-722020	15-22	1/2"
PE-722025	21-27	3/4"
PE-722032	27-35	1"
PE-722040	35-50	1.1/2"

Elbows



Tube x Tube

0116	OD A mm	OD A	OD B mm
PE-723020	15-22	1/2"	20
PE-723021	15-22	1/2"	25
PE-723025	21-27	3/4"	25
PE-723026	21-27	3/4"	32
PE-723033	27-35	1"	40



Male, BSPT

0116	OD mm	OD	Thread
PE-723121	15-22	1/2"	3/4"
PE-723132	27-35	1"	1"



Female, BSPP

0116	OD mm	OD	Thread
PE-723221	15-22	1/2"	3/4"
PE-723226	21-27	3/4"	1"
PE-723232	27-35	1"	1"
PE-723233	27-35	1"	1.1/4"

POLYETHYLENE PIPE UNIVERSAL TRANSITION FITTINGS & VALVES



Tees



Tube x Tube, Universal x PP x PP

0116	OD A mm	OD A	OD B mm	OD C mm
PE-724001	15-22	1/2"	25	25
PE-724003	15-22	1/2"	25	20
PE-724005	21-27	3/4"	32	32
PE-724007	21-27	3/4"	32	25
PE-724011	27-35	1"	40	40
PE-724013	27-35	1"	40	32



Tube x Tube, Universal x PP x Universal

0116	OD A mm	OD A	OD B mm
PE-724002	15-22	1/2"	25
PE-724004	15-22	1/2"	20
PE-724010	15-22	1/2"	32
PE-724008	21-27	3/4"	25
PE-724006	21-27	3/4"	32
PE-724016	21-27	3/4"	40
PE-724014	27-35	1"	32
PE-724012	27-35	1"	40



Female x BSPP

0116	OD A mm	OD A	OD B mm	Thread
PE-724120	15-22	1/2"	25	1/2"
PE-724121	15-22	1/2"	25	3/4"
PE-724125	21-27	3/4"	32	3/4"
PE-724126	21-27	3/4"	32	1"
PE-724132	27-35	1"	40	1"
PE-724133	27-35	1"	40	1.1/4"



Male x BSPT

0116	OD A mm	OD A	OD B mm	Thread
PE-724221	15-22	1/2"	25	3/4"
PE-724226	21-27	3/4"	32	1"
PE-724233	27-35	1"	40	1.1/4"

Compression Valves



Tube x Tube

0116	OD mm
PE-141020C	20
PE-141025C	25
PE-141032C	32
PE-141040C	40
PE-141050C	50
PE-141063C	63



Tube x BSPT Male

0116	OD mm	Thread
PE-142020C	20	1/2"
PE-142025C	25	3/4"
PE-142032C	32	1"
PE-142040C	40	1.1/4"
PE-142050C	50	1.1/2"
PE-142063C	63	2"



Tube x BSPP Female

0116	OD mm	Thread
PE-140020CX	20	1/2"
PE-140025CX	25	3/4"
PE-140032CX	32	1"
PE-140040CX	40	1.1/4"
PE-140050CX	50	1.1/2"
PE-140063CX	63	2"

Universal Compression Valves



Tube x Tube, Universal x PP

0116	OD mm	OD mm
PE-141024CU	15-22	25
PE-141031CU	15-22	32
PE-141040CU	27-35	40



Universal x Universal

0116	OD mm	OD mm
PE-140025U	15-22	15-22
PE-140031U	21-27	15-22
PE-140040U	27-35	27-35



Tube x BSPP Female

0116	OD mm	Thread
PE-141030UM	15-22	1"
PE-141031UM	21-27	3/4"
PE-141032UM	21-27	1"
PE-141041UM	27-35	1.1/2"



Tube x BSPT Male

0116	OD mm	Thread
PE-142024UM	15-22	1/2"
PE-142025UM	15-22	3/4"
PE-142030UM	15-22	1"
PE-142031UM	21-27	3/4"
PE-142032UM	21-27	1"
PE-142040UM	27-35	1.1/4"
PE-142041UM	27-35	1.1/2"