



techhose

QUALITY CONNECTIONS

Hydraulics

Pneumatics
& Vacuum

Industrial

Compressed Air
& Ring Main

Process &
Instrumentation

Ring Main

ABS Systems

ABS IMPERIAL PIPE SYSTEM



Working Temperature:
-40°C to 70°C

Maximum Working Pressure:
15 bar
(8" with reduced safety factor)

For Air Ring Mains use ABS. UPVC is not suitable for use with compressed air.

UPVC = Unplasticized Poly Vinyl Chloride
ABS = Acrylonitrile-Butadiene-Styrene Copolymers

Sockets & Reducing Bushes



Equal Socket

1050	Nominal Bore ID
SO13-12-ABS	1/2"
SO13-34-ABS	3/4"
SO13-1-ABS	1"
SO13-114-ABS	1.1/4"
SO13-112-ABS	1.1/2"
SO13-2-ABS	2"
SO13-212-ABS	2.1/2"
SO13-3-ABS	3"
SO13-4-ABS	4"

Tech Sheet 10255



Plain x Threaded Male, BSPT

1050	Nominal Bore ID	Nominal Bore ID
RS13-3412-ABS	3/4"	1/2"
RS13-134-ABS	1"	3/4"
RS13-1141-ABS	1.1/4"	1"
RS13-112114-ABS	1.1/2"	1.1/4"
RS13-2112-ABS	2"	1.1/2"
RS13-3212-ABS	3"	2.1/2"
RS13-43-ABS	4"	3"

Tech Sheet 10255



Reducing Bush

1050	Nominal Bore ID	Nominal Bore ID
RB93-3412-ABS	3/4"	1/2"
RB93-112-ABS	1"	1/2"
RB93-134-ABS	1"	3/4"
RB93-11412-ABS	1.1/4"	1/2"
RB93-11434-ABS	1.1/4"	3/4"
RB93-1141-ABS	1.1/4"	1"
RB93-11234-ABS	1.1/2"	3/4"
RB93-1121-ABS	1.1/2"	1"
RB93-112114-ABS	1.1/2"	1.1/4"
RB93-21-ABS	2"	1"
RB93-2114-ABS	2"	1.1/4"
RB93-2112-ABS	2"	1.1/2"
RB93-2122-ABS	2.1/2"	2"
RB93-3112-ABS	3"	1.1/2"
RB93-32-ABS	3"	2"
RB93-3212-ABS	3"	2.1/2"
RB93-42-ABS	4"	2"
RB93-4212-ABS	4"	2.1/2"
RB93-43-ABS	4"	3"
RB93-54-ABS	5"	4"

Tech Sheet 10255

Elbows & Bends



Equal 90° Elbow

1050	Nominal Bore ID
EL53-12-ABS	1/2"
EL53-34-ABS	3/4"
EL53-1-ABS	1"
EL53-114-ABS	1.1/4"
EL53-112-ABS	1.1/2"
EL53-2-ABS	2"
EL53-212-ABS	2.1/2"
EL53-3-ABS	3"
EL53-4-ABS	4"
EL53-5-ABS	5"
EL53-6-ABS	6"

Tech Sheet 10255



Equal 90° Bend, Short Radius

1050	Nominal Bore ID
BE33-12-ABS	1/2"
BE33-34-ABS	3/4"
BE33-1-ABS	1"
BE33-114-ABS	1.1/4"
BE33-112-ABS	1.1/2"
BE33-2-ABS	2"
BE33-212-ABS	2.1/2"
BE33-3-ABS	3"
BE33-4-ABS	4"

Tech Sheet 10255



Equal 45° Elbow

1050	Nominal Bore ID
EY53-12-ABS	1/2"
EY53-34-ABS	3/4"
EY53-1-ABS	1"
EY53-114-ABS	1.1/4"
EY53-112-ABS	1.1/2"
EY53-2-ABS	2"
EY53-212-ABS	2.1/2"
EY53-3-ABS	3"
EY53-4-ABS	4"
EY53-6-ABS	6"

Tech Sheet 10255

Equal Barrel Nipples



Male, BSPT

1050	Thread
BN11-12-ABS	1/2"
BN11-34-ABS	3/4"
BN11-1-ABS	1"
BN11-114-ABS	1.1/4"
BN11-112-ABS	1.1/2"
BN11-2-ABS	2"
BN11-212-ABS	2.1/2"
BN11-3-ABS	3"
BN11-4-ABS	4"

Tech Sheet 10255



Stem Nipple, BSPT

1050	Thread	Nominal Bore ID	Length mm
BN12-12-ABS	1/2"	1/2"	50
BN12-34-ABS	3/4"	3/4"	56
BN12-1-ABS	1"	1"	63
BN12-114-ABS	1.1/4"	1.1/4"	75
BN12-112-ABS	1.1/2"	1.1/2"	88
BN12-2-ABS	2"	2"	88
BN12-212-ABS	2.1/2"	2.1/2"	106
BN12-3-ABS	3"	3"	128
BN12-4-ABS	4"	4"	153

Tech Sheet 10255

Tees



45° Tee

1050	Nominal Bore ID
TY43-12-ABS	1/2"
TY43-34-ABS	3/4"
TY43-1-ABS	1"
TY43-114-ABS	1.1/4"
TY43-2-ABS	2"

Tech Sheet 10255



Equal Tee

1050	Nominal Bore ID
TE43-12-ABS	1/2"
TE43-34-ABS	3/4"
TE43-1-ABS	1"
TE43-112-ABS	1.1/2"
TE43-114-ABS	1.1/4"
TE43-2-ABS	2"
TE43-212-ABS	2.1/2"
TE43-3-ABS	3"
TE43-4-ABS	4"
TE43-5-ABS	5"
TE43-6-ABS	6"

Tech Sheet 10255

ABS IMPERIAL PIPE SYSTEM



Working Temperature:
0°C to 60°C



Maximum Working Pressure:
15 bar
(8" with reduced safety factor)

For Air Ring Mains use ABS. UPVC is not suitable for use with compressed air.

UPVC = Unplasticized Poly Vinyl Chloride
ABS = Acrylonitrile-Butadiene-Styrene Copolymers

Crosses



Equal Cross

1050	Nominal Bore ID
CR33-12-ABS	1/2"
CR33-34-ABS	3/4"
CR33-1-ABS	1"
CR33-2-ABS	2"

Tech Sheet 10255

Caps



Plain

1050	Nominal Bore ID
CA73-12-ABS	1/2"
CA73-34-ABS	3/4"
CA73-1-ABS	1"
CA73-114-ABS	1.1/4"
CA73-112-ABS	1.1/2"
CA73-2-ABS	2"
CA73-212-ABS	2.1/2"
CA73-3-ABS	3"
CA73-4-ABS	4"

Tech Sheet 10255

Unions



Equal Union

1050	Nominal Bore ID
UN83-12-ABS	1/2"
UN83-34-ABS	3/4"
UN83-1-ABS	1"
UN83-114-ABS	1.1/4"
UN83-112-ABS	1.1/2"
UN83-2-ABS	2"
UN83-212-ABS	2.1/2"
UN83-3-ABS	3"
UN83-4-ABS	4"

Tech Sheet 10255

Tank Connectors



Plain x Female, BSPP

1050	Nominal Bore ID	Thread
TC93-12-ABS	1/2"	1/2"
TC93-34-ABS	3/4"	3/4"
TC93-1-ABS	1"	1"
TC93-114-ABS	1.1/4"	1.1/4"
TC93-112-ABS	1.1/2"	1.1/2"
TC93-2-ABS	2"	2"
TC93-212-ABS	2.1/2"	2.1/2"
TC93-3-ABS	3"	3"
TC93-4-ABS	4"	4"

Tech Sheet 10255

Threaded Sockets & Adaptors



Plain x Threaded Female Socket, BSPP

1050	Nominal Bore ID	Thread
PTS-12-ABS	1/2"	1/2"
PTS-1-ABS	1"	1"
PTS-112-ABS	1.1/2"	1.1/2"
PTS-2-ABS	2"	2"
PTS-212-ABS	2.1/2"	2.1/2"
PTS-3-ABS	3"	3"
PTS-4-ABS	4"	4"

Plain x Threaded Male Adaptor, BSPP

1050	Nominal Bore ID	Spigot	BSPP Male
MFA1-34-ABS	3/4"	1"	3/4"
MFA1-1-ABS	1"	1.1/4"	1"
MFA1-112-ABS	1.1/2"	2"	1.1/2"
MFA1-2-ABS	2"	2.1/2"	2"

Plain x Threaded Female Adaptor, BSPP

1050	Nominal Bore ID	Thread
MFA2-12-ABS	1/2"	1/2"
MFA2-34-ABS	3/4"	3/4"
MFA2-1-ABS	1"	1"
MFA2-2-ABS	2"	2"
MFA2-3-ABS	3"	3"

Hose Connections



Male, BSPP x Hose Tail

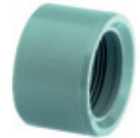
1050	Thread	Hose ID mm
MHA-34-ABS	3/4"	25



Female, BSPP x Hose Tail

1050	Thread	Hose ID mm
FHA-1-ABS	1"	20

Reducing Bushes



Plain x Threaded Female, BSPP

1050	Nominal Bore ID	Female BSPP
FRB-12-ABS	1/2"	3/8"
FRB-34-ABS	3/4"	1/2"

Unions



Plain x Brass Composite Male Threaded Union, BSPP

1050	Nominal Bore ID	Thread
MBU-1-ABS	1"	1"
MBU-112-ABS	1.1/2"	1.1/2"



Plain x Brass Composite Female Threaded Union, BSPP

1050	Nominal Bore ID	Thread
FBU-12-ABS	1/2"	1/2"
FBU-34-ABS	3/4"	3/4"
FBU-1-ABS	1"	1"
FBU-114-ABS	1.1/4"	1.1/4"
FBU-112-ABS	1.1/2"	1.1/2"
FBU-2-ABS	2"	2"

ABS IMPERIAL PIPE SYSTEM



Working Temperature:
0°C to 60°C

Maximum Working Pressure:
15 bar
(8" with reduced safety factor)

For Air Ring Mains use ABS. UPVC is not suitable for use with compressed air.

UPVC = Unplasticized Poly Vinyl Chloride
ABS = Acrylonitrile-Butadiene-Styrene Copolymers

Flanges



Stub Flange, Serrated Face

1050	Nominal Bore
ST23-34-ABS	3/4"
ST23-1-ABS	1"
ST23-112-ABS	1.1/2"
ST23-2-ABS	2"
ST23-212-ABS	2.1/2"
ST23-3-ABS	3"
ST23-4-ABS	4"
ST23-5-ABS	5"
ST23-6-ABS	6"

Tech Sheet 10255



BS4504, PN16 Flange Gasket

1050	Size
SF16-12	1/2"
SF16-34	3/4"
SF16-1	1"
SF16-114	1.1/4"
SF16-112	1.1/2"
SF16-2	2"
SF16-3	3"
SF16-4	4"
SF16-6	6"

Tech Sheet 10255



PN16 Galvanised Backing Ring

1050	Size
GB16-12	1/2"
GB16-34	3/4"
GB16-1	1"
GB16-114	1.1/4"
GB16-112	1.1/2"
GB16-2	2"
GB16-212	2.1/2"
GB16-3	3"
GB16-4	4"
GB16-5	5"
GB16-6	6"

Tech Sheet 10255



Full Face Table E

1050	Nominal Bore
FF30-12-ABS	1/2"
FF30-34-ABS	3/4"
FF30-1-ABS	1"
FF30-114-ABS	1.1/4"
FF30-112-ABS	1.1/2"
FF30-2-ABS	2"
FF30-3-ABS	3"
FF30-4-ABS	4"

Tech Sheet 10255



BS10, Table E Flange Gasket

1050	Size
SF10-12	1/2"
SF10-34	3/4"
SF10-1	1"
SF10-114	1.1/4"
SF10-112	1.1/2"
SF10-2	2"
SF10-212	2.1/2"
SF10-3	3"
SF10-4	4"
SF10-6	6"

Tech Sheet 10255



Stub Flange Gasket, EPDM

1050	Size
SG50-1-ABS	1"
SG50-114-ABS	1.1/4"
SG50-112-ABS	1.1/2"
SG50-2-ABS	2"
SG50-212-ABS	2.1/2"
SG50-3-ABS	3"
SG50-4-ABS	4"
SG50-5-ABS	5"

Tech Sheet 10255



ABS Plain Full Face Flange NP10/16

1050	Tube NB
FF31-2-ABS	2"



ABS Blank Flange NP10/16

1050	Tube NB
BF10-212-ABS	2.1/2"

Tube O.D. - Size Conversion Table

Nominal Bore	Outside Diameter
3/8"	17.1mm
1/2"	21.3mm
3/4"	26.7mm
1"	33.4mm
1.1/4"	42.2mm
1.1/2"	48.3mm
2"	60.3mm
2.1/2"	75mm
3"	88.9mm
4"	114.3mm
5"	140mm
6"	168.3mm
8"	219.1mm

ABS IMPERIAL PIPE SYSTEM



Working Temperature:
0°C to 60°C



Maximum Working Pressure:
15 bar
(8" with reduced safety factor)

For Air Ring Mains use ABS. UPVC is not suitable for use with compressed air.

UPVC = Unplasticized Poly Vinyl Chloride
ABS = Acrylonitrile-Butadiene-Styrene Copolymers

Valves



Industrial Double Union Ball Valve, EPDM Seals

0118	Nominal Bore ID
BVI13-12-ABS	1/2"
BVI13-34-ABS	3/4"
BVI13-1-ABS	1"
BVI13-114-ABS	1.1/4"
BVI13-112-ABS	1.1/2"
BVI13-2-ABS	2"
BVI13-212-ABS	2.1/2"
BVI13-3-ABS	3"
BVI13-4-ABS	4"

Tech Sheet 10255



Standard Double Union Ball Valve, EPDM Seals

1050	Tube NB
BVDUS-12	1/2"
BVDUS-1	1"
BVDUS-112	1.1/2"
BVDUS-2	2"
BVDUS-212	2.1/2"



Industrial Check Valve, EPDM Seals

0118	Nominal Bore ID
CVD13-12-ABS	1/2"
CVD13-34-ABS	3/4"
CVD13-1-ABS	1"
CVD13-114-ABS	1.1/4"
CVD13-112-ABS	1.1/2"
CVD13-2-ABS	2"

Tech Sheet 10255

Solvent Cement



ABS

1050	Millilitres
ABS	500

Tech Sheet 875

Cleaning Fluid



500ml

1050	Millilitres
MEK-TIN	500

Tech Sheet 877



For Pipe Clips & Fixing Systems
...see pages 1549-1557

ABS Tubing

Note: 6 metre length tube is available on a 3 to 5 working day delivery service. Specified delivery dates and times can not be guaranteed. Carriage is charged as an extra based on weight and delivery service required. Please speak to our sales department for further details. Delivery of 2.9 metre lengths may take up to 48 hours.



Class C, 9 bar, 2.9 Metre Lengths

0118	Nominal Bore
ABS/CTUBE-3-1	1"
ABS/CTUBE-3-114	1.1/4"
ABS/CTUBE-3-112	1.1/2"
ABS/CTUBE-3-2	2"
ABS/CTUBE-3-212	2.1/2"
ABS/CTUBE-3-3	3"
ABS/CTUBE-3-4	4"
ABS/CTUBE-3-6	6"
ABS/CTUBE-3-8	8"

Tech Sheet 10255

Class C, 9 bar, 5.8 Metre Lengths

0118	Nominal Bore
ABS/CTUBE-6-1	1"
ABS/CTUBE-6-114	1.1/4"
ABS/CTUBE-6-112	1.1/2"
ABS/CTUBE-6-2	2"
ABS/CTUBE-6-212	2.1/2"
ABS/CTUBE-6-3	3"
ABS/CTUBE-6-4	4"

Tech Sheet 10255

Class E, 15 bar, 2.9 Metre Lengths

0118	Nominal Bore
ABS/ETUBE-3-12	1/2"
ABS/ETUBE-3-34	3/4"
ABS/ETUBE-3-1	1"
ABS/ETUBE-3-114	1.1/4"
ABS/ETUBE-3-112	1.1/2"
ABS/ETUBE-3-2	2"
ABS/ETUBE-3-3	3"
ABS/ETUBE-3-4	4"

Tech Sheet 10255

Class E, 15 bar, 5.8 Metre Lengths

0118	Nominal Bore
ABS/ETUBE-6-12	1/2"
ABS/ETUBE-6-34	3/4"
ABS/ETUBE-6-1	1"
ABS/ETUBE-6-114	1.1/4"
ABS/ETUBE-6-112	1.1/2"
ABS/ETUBE-6-2	2"
ABS/ETUBE-6-3	3"

Tech Sheet 10255