



# techhose

QUALITY CONNECTIONS

Hydraulics

Pneumatics  
& Vacuum

Industrial

Compressed Air  
& Ring Main

Process &  
Instrumentation

---

## Pneumatic & Vacuum

---

Solenoid Valves

**Medium:** Clean compressed air. Filtered (40µm) and lubricated  
**Body Material:** Aluminium alloy  
**Seals:** Nitrile

**Working Temperature:**  
 -20°C to +70°C

**Working Pressure:**  
 1.5 to 8 bar



## Solenoid 3/2 Way Valves



**Direct Acting, Normally Closed, M5**

0335	Voltage
KCV1-M5-B	24V DC
KCV1-M5-C	110V 50/60Hz
KCV1-M5-A	220V 50/60Hz
Tech Sheet 3107	



**Direct Acting, Normally Closed, 1/8" BSPP**

0335	Voltage
KCV1-06-B	24V DC
KCV1-06-C	110V 50/60Hz
KCV1-06-A	220V 50/60Hz
Tech Sheet 3107	



**Solenoid/Spring, Normally Open, BSPP**

0335	Thread
CKV210-06-NO	1/8"
CKV210-08-NO	1/4"
CKV310-10-NO	3/8"
Tech Sheet 3039	



**Solenoid/Spring, Normally Closed, BSPP**

0335	Thread
CKV210-06-NC	1/8"
CKV210-08-NC	1/4"
CKV310-10-NC	3/8"
Tech Sheet 3039	



**Solenoid/Solenoid, BSPP**

0335	Thread
CKV220-06	1/8"
CKV220-08	1/4"
CKV320-10	3/8"
Tech Sheet 3039	



For Pre wired  
 moulded DIN Plugs  
 see page 1043



## Gang Mount Components, to suit KCV Series



**Coupling Screws & O-Ring**

0335
KCV1-P31

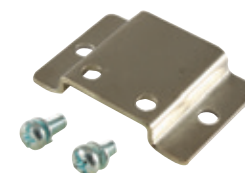
Tech Sheet 3107



**Coupling Screws & End Fixing Nuts**

0335
KCV1-P30

Tech Sheet 3107



**Base Plate**

0335
KCV1-P32

Tech Sheet 3107

## SOLENOID VALVES



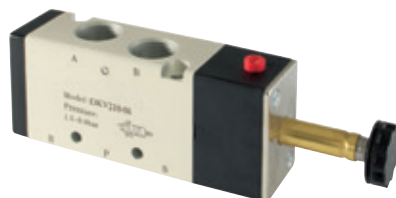
**Medium:** Clean compressed air. Filtered (40µm) and lubricated  
**Body Material:** Aluminium alloy  
**Seals:** Nitrile

**Working Temperature:**  
 -20°C to +70°C

**Working Pressure:**  
 1.5 to 8 bar



## Solenoid 5/2 Way Valves



## Solenoid/Spring, BSPP

0335	Thread
DKV210-06	1/8"
DKV210-08	1/4"
DKV310-10	3/8"
DKV410-15	1/2"

Tech Sheet 3040



## Solenoid/Solenoid, BSPP

0335	Thread
DKV220-06	1/8"
DKV220-08	1/4"
DKV320-10	3/8"
DKV420-15	1/2"

Tech Sheet 3040

## Solenoid 5/3 Way Valves



## Solenoid/Solenoid, Fully Sealed Mid Position, BSPP

0335	Thread
DKV230C-06	1/8"
DKV230C-08	1/4"
DKV330C-10	3/8"
DKV430C-15	1/2"

Tech Sheet 3040



## Solenoid/Solenoid, Centre Open Pressurised, BSPP

0335	Thread
DKV230P-06	1/8"
DKV230P-08	1/4"
DKV330P-10	3/8"
DKV430P-15	1/2"

Tech Sheet 3040



## Solenoid/Solenoid, Supply Sealed Mid Position, BSPP

0335	Thread
DKV230E-06	1/8"
DKV230E-08	1/4"
DKV330E-10	3/8"
DKV430E-15	1/2"

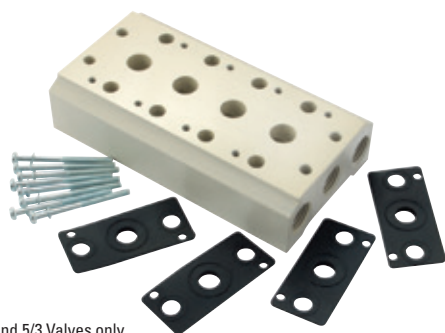
Tech Sheet 3040



For **Silencers**  
 see page 631



## Valve Manifolds



Suitable for use with 5/2 and 5/3 Valves only

Please contact our Technical Department if larger manifolds are required up to 16 stations.

### B Series, to suit 1/8" & 1/4" BSPP Valves, 1/4" BSPP Inlet

0335	No. of Stations
BOOKM-1F	1
BOOKM-2F	2
BOOKM-3F	3
BOOKM-4F	4
BOOKM-5F	5
BOOKM-6F	6
BOOKM-8F	8
BOOKM-10F	10

Tech Sheet 3042

Please contact our Technical Department if larger manifolds are required up to 12 stations.

### C Series, to suit 3/8" BSPP Valves, 3/8" BSPP Inlet

0335	No. of Stations
COOKM-1F	1
COOKM-2F	2
COOKM-3F	3
COOKM-4F	4
COOKM-5F	5
COOKM-6F	6
COOKM-8F	8
COOKM-10F	10

Tech Sheet 3042

Maximum number of stations available is 8.

### D Series, to suit 1/2" BSPP Valves, 1/2" BSPP Inlet

0335	No. of Stations
DOOKM-1F	1
DOOKM-2F	2
DOOKM-3F	3
DOOKM-4F	4
DOOKM-5F	5
DOOKM-6F	6
DOOKM-8F	8

Tech Sheet 3042

## Blanking Plates



### Single

0335	To Suit
BOOKM-B	B Series
COOKM-B	C Series
DOOKM-B	D Series

Tech Sheet 3042

## 5/2 Namur Solenoid Valves



### Solenoid/Spring, BSPP

0335	Thread
DKM310-08	1/4"
DKM310-10	3/8"

Tech Sheet 3043



### Solenoid/Solenoid, BSPP

0335	Thread
DKM320-08	1/4"
DKM320-10	3/8"

Tech Sheet 3043

## Solenoid Coils & Plugs



### Coil & LED Connector

0335	Voltage
K-12DC	12V DC
K-24DC	24V DC
K-24AC	24V 50/60Hz
K-110AC	110V 50/60Hz
K-220AC	220V 50/60Hz

Tech Sheet 3044

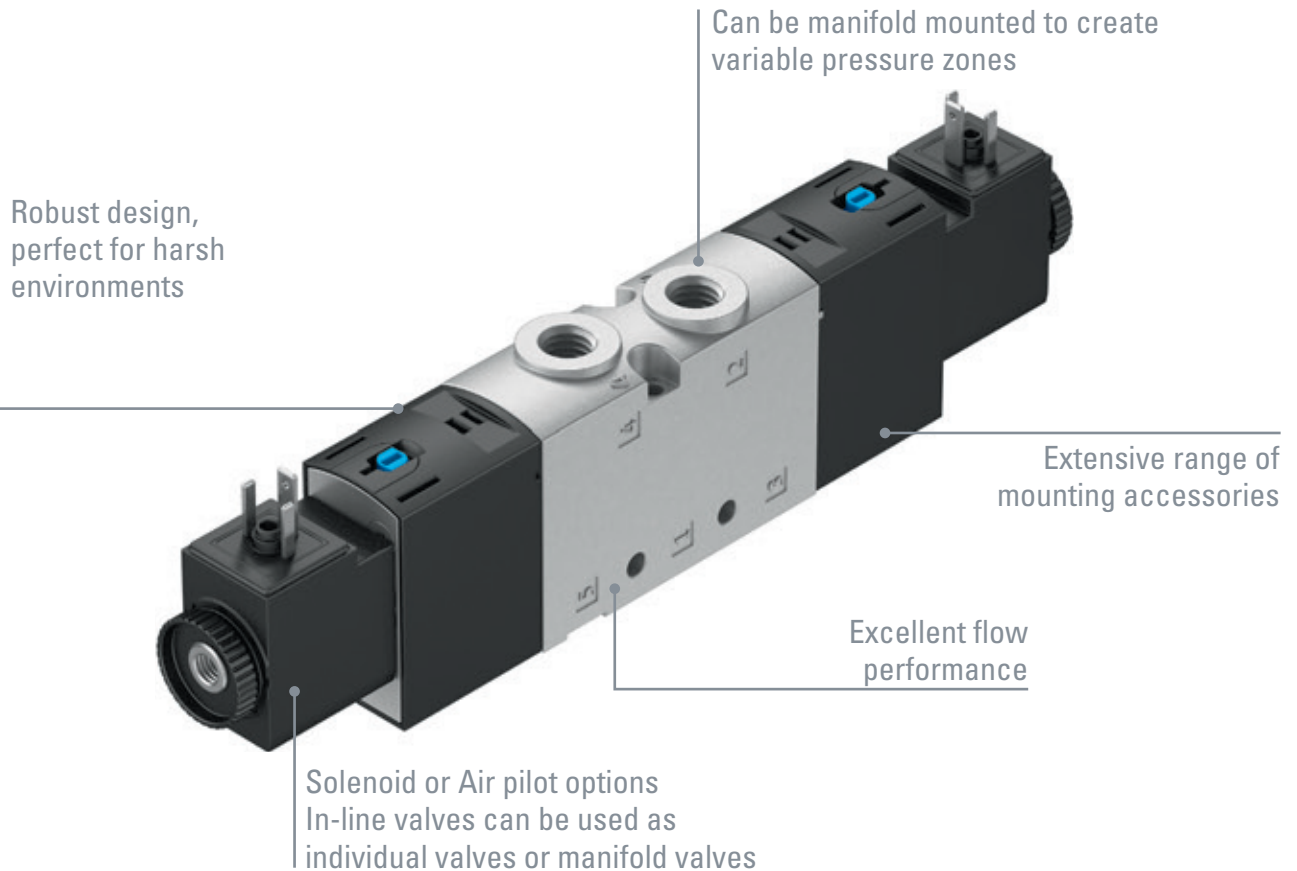
# VALVES

For the full range and more information, please contact one of our sales team.

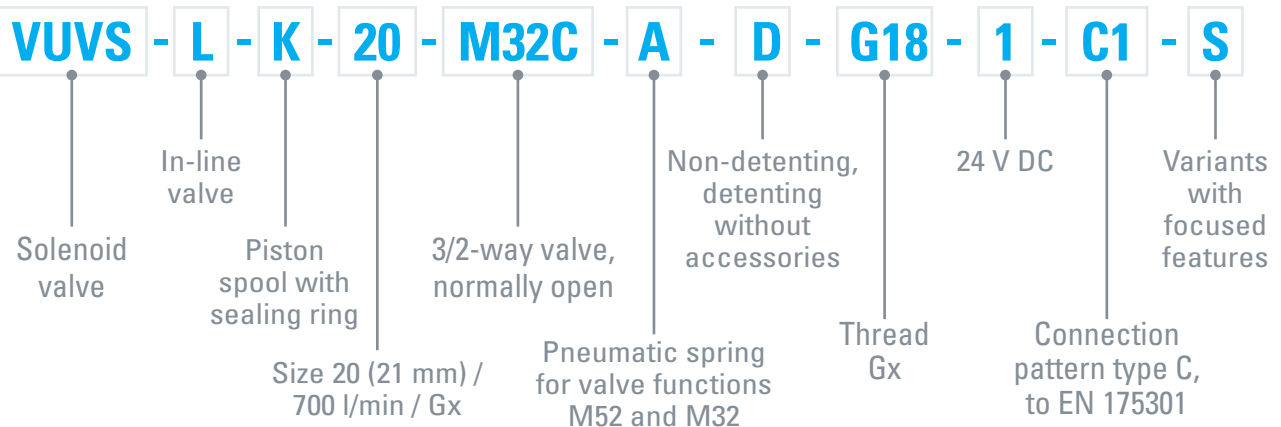
## VUVS UNIVERSAL DIRECTIONAL CONTROL VALVES



### Features



### Product Description



# IN-LINE PISTON SPOOL VALVES WITH SEALING RING, VUVS

# FESTO



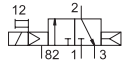
**Ambient Temperature:**  
-5°C to +50°C

- Flow rate up to 2300 l/min
- In-line valves can be used as individual valves or manifold valves
- Variable pressure zones

- Universal valve, sturdy and durable
- Low-cost, no limitations with regard to performance
- Can be used as individual valves or manifold valves VTUS

## In-line Electrical Connection Pattern Type B

**Working Pressure:**  
1.5 to 8 bar

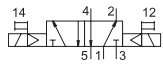


### 3/2 Way Solenoid/Pneumatic Spring with Internal Pilot Supply, Normally Closed

0009	Thread	Size mm	Voltage	Manufacturer's Code
8043217	G1/4"	25	24V DC	VUVS-LK25-M32C-AD-G14-1B2-S
8049880	G3/8"	30	24V DC	VUVS-LK30-M32C-AD-G38-1B2-S

Tech Sheet 70803

**Working Pressure:**  
1.5 to 8 bar

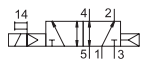


### 5/2 Way Solenoid/Solenoid with Internal Pilot Supply

0009	Thread	Size mm	Voltage	Manufacturer's Code
8043219	G1/4"	25	24V DC	VUVS-LK25-B52-D-G14-1B2-S
8049882	G3/8"	30	24V DC	VUVS-LK30-B52-D-G38-1B2-S

Tech Sheet 70804

**Working Pressure:**  
1.5 to 8 bar



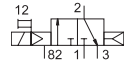
### 5/2 Way Solenoid/Pneumatic Spring with Internal Pilot Supply

0009	Thread	Size mm	Voltage	Manufacturer's Code
8043218	G1/4"	25	24V DC	VUVS-LK25-M52-AD-G14-1B2-S
8049881	G3/8"	30	24V DC	VUVS-LK30-M52-AD-G38-1B2-S

Tech Sheet 70805

## In-line Electrical Connection Pattern Type C

**Working Pressure:**  
1.5 to 8 bar

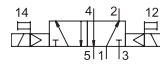


### 3/2 Way Solenoid/Pneumatic Spring with Internal Pilot Supply, Normally Closed

0009	Thread	Size mm	Voltage	Manufacturer's Code
8043213	G1/8"	20	24V DC	VUVS-LK20-M32C-AD-G18-1C1-S

Tech Sheet 70806

**Working Pressure:**  
1.5 to 8 bar

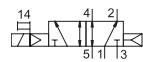


### 5/2 Way Solenoid/Solenoid with Internal Pilot Supply

0009	Thread	Size mm	Voltage	Manufacturer's Code
8043215	G1/8"	20	24V DC	VUVS-LK20-B52-D-G18-1C1-S

Tech Sheet 70808

**Working Pressure:**  
1.5 to 8 bar



### 5/2 Way Solenoid/Pneumatic Spring with Internal Pilot Supply

0009	Thread	Size mm	Voltage	Manufacturer's Code
8043214	G1/8"	20	24V DC	VUVS-LK20-M52-AD-G18-1C1-S

Tech Sheet 70807

# IN-LINE PISTON SPOOL VALVES, VUVS

# FESTO



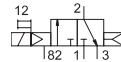
**Ambient Temperature:**  
-5°C to +50°C

- Flow rate up to 2300 l/min
- In-line valves can be used as individual valves or manifold valves
- Variable pressure zones

- Universal valve, sturdy and durable
- Low-cost, no limitations with regard to performance
- Can be used as individual valves or manifold valves VTUS

## In-line Electrical Connection Pattern Type C

**Working Pressure:**  
2.5 to 10 bar

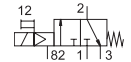


### 3/2 Way Solenoid/Pneumatic Spring with Internal Pilot Supply, Normally Closed

0009	Thread	Size mm	Voltage	Manufacturer's Code
575475	G1/4"	25	24V DC	VUVS-L25-M32C-AD-G14-F8-1C1
575568	G3/8"	30	24V DC	VUVS-L30-M32C-AD-G38-F8-1C1

Tech Sheet 70809

**Working Pressure:**  
2.5 to 10 bar

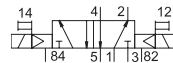


### 3/2 Way Solenoid/Mechanical Spring with Internal Pilot Supply, Normally Closed

0009	Thread	Size mm	Voltage	Manufacturer's Code
575274	G1/8"	20	24V DC	VUVS-L20-M32C-MD-G18-F7-1C1
575477	G1/4"	25	24V DC	VUVS-L25-M32C-MD-G14-F8-1C1
575570	G3/8"	30	24V DC	VUVS-L30-M32C-MD-G38-F8-1C1

Tech Sheet 70810

**Working Pressure:**  
1.5 to 10 bar

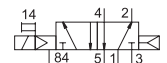


### 5/2 Way Solenoid/Solenoid with Internal Pilot Supply

0009	Thread	Size mm	Voltage	Manufacturer's Code
575265	G1/8"	20	24V DC	VUVS-L20-B52-D-G18-F7-1C1
575518	G1/4"	25	24V DC	VUVS-L25-B52-D-G14-F8-1C1
575611	G3/8"	30	24V DC	VUVS-L30-B52-D-G38-F8-1C1

Tech Sheet 70813

**Working Pressure:**  
2.5 to 10 bar



### 5/2 Solenoid/Mechanical Spring Valves with Internal Pilot Supply

0009	Thread	Size mm	Voltage	Manufacturer's Code
575264	G1/8"	20	24V DC	VUVS-L20-M52-MD-G18-F7-1C1
575511	G1/4"	25	24V DC	VUVS-L25-M52-MD-G14-F8-1C1
575604	G3/8"	30	24V DC	VUVS-L30-M52-MD-G38-F8-1C1

Tech Sheet 70811

**Working Pressure:**  
2.5 to 10 bar

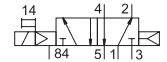
### 5/3 Way Solenoid/Solenoid, Fully Closed Mid Position with Internal Pilot Supply



0009	Thread	Size mm	Voltage	Manufacturer's Code
575268	G1/8"	20	24V DC	VUVS-L20-P53C-MD-G18-F7-1C1
575525	G1/4"	25	24V DC	VUVS-L25-P53C-MD-G14-F8-1C1
575618	G3/8"	30	24V DC	VUVS-L30-P53C-MD-G38-F8-1C1

Tech Sheet 70814

### 5/2 Way Solenoid/Pneumatic Spring with Internal Pilot Supply



0009	Thread	Size mm	Voltage	Manufacturer's Code
575263	G1/8"	20	24V DC	VUVS-L20-M52-AD-G18-F7-1C1
575503	G1/4"	25	24V DC	VUVS-L25-M52-AD-G14-F8-1C1
575596	G3/8"	30	24V DC	VUVS-L30-M52-AD-G38-F8-1C1

Tech Sheet 70812

# ACCESSORIES FOR VALVES

# FESTO

Solenoid Valves  
5.07

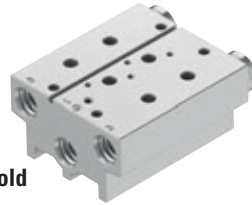
## Manifold Blocks includes Seals & Screws for Mounting Valves



**Common Supply Manifold for Mounting Both Sides, Size 20**

0009	Thread	No. of Stations	Manufacturer's Code
576363	G3/8	2	VABM-B10-20-G38-2-P53
576365	G3/8	4	VABM-B10-20-G38-4-P53
576367	G3/8	6	VABM-B10-20-G38-6-P53
576369	G3/8	8	VABM-B10-20-G38-8-P53
576371	G3/8	10	VABM-B10-20-G38-10-P53

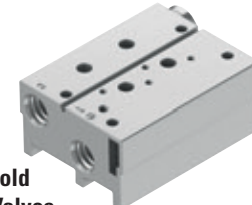
Tech Sheet 70145



**Compact Manifold Blocks for 5/2 & 5/3 Valves, Size 20**

0009	Thread	No. of Stations	Manufacturer's Code
576417	G1/4	2	VABM-B10-20S-G14-2
576419	G1/4	4	VABM-B10-20S-G14-4
576421	G1/4	6	VABM-B10-20S-G14-6
576423	G1/4	8	VABM-B10-20S-G14-8
576425	G1/4	10	VABM-B10-20S-G14-10

Tech Sheet 70143



**Compact Manifold Blocks for 3/2 Valves, Size 20**

0009	Thread	No. of Stations	Manufacturer's Code
576465	G1/4	2	VABM-B10-20S-G14-2-P3
576467	G1/4	4	VABM-B10-20S-G14-4-P3
576469	G1/4	6	VABM-B10-20S-G14-6-P3
576471	G1/4	8	VABM-B10-20S-G14-8-P3
576473	G1/4	10	VABM-B10-20S-G14-10-P3

Tech Sheet 70159

**Common Supply Manifold for Mounting Both Sides, Size 25**

0009	Thread	No. of Stations	Manufacturer's Code
8026219	G1/2	2	VABM-B10-25-G12-2-P53
8026221	G1/2	4	VABM-B10-25-G12-4-P53
8026223	G1/2	6	VABM-B10-25-G12-6-P53
8026225	G1/2	8	VABM-B10-25-G12-8-P53
8026227	G1/2	10	VABM-B10-25-G12-10-P53

Tech Sheet 71601

**Compact Manifold Blocks for 5/2 & 5/3 Valves, Size 25**

0009	Thread	No. of Stations	Manufacturer's Code
8026261	G3/8	2	VABM-B10-25S-G38-2
8026263	G3/8	4	VABM-B10-25S-G38-4
8026265	G3/8	6	VABM-B10-25S-G38-6
8026267	G3/8	8	VABM-B10-25S-G38-8
8026269	G3/8	10	VABM-B10-25S-G38-10

Tech Sheet 71602

**Compact Manifold Blocks for 3/2 Valves, Size 25**

0009	Thread	No. of Stations	Manufacturer's Code
8026297	G3/8	2	VABM-B10-25S-G38-2-P3
8026299	G3/8	4	VABM-B10-25S-G38-4-P3
8026301	G3/8	6	VABM-B10-25S-G38-6-P3
8026303	G3/8	8	VABM-B10-25S-G38-8-P3
576473	G1/4	10	VABM-B10-20S-G14-10-P3

Tech Sheet 70144

## Solenoid Coils VACS



**Solenoid Coil Without Plug Socket, Connection Pattern To EN 175301-803, Type C**

0009	Voltage	Manufacturer's Code
8025331	12V DC	VACS-C-C1-5
8025330	24V DC	VACS-C-C1-1
8025336	48V DC	VACS-C-C1-7
8025335	24V AC	VACS-C-C1-1A
8025337	48V AC	VACS-C-C1-7A

Tech Sheet 71578

## Plug Sockets MSSD



**To suit Type C to EN 175301-803**

0009	Manufacturer's Code
151687	MSSD-EB

Tech Sheet 70184

## Blanking Plates



**Cover Plates for VUVS, Common Supply**

0009	To Suit	Manufacturer's Code
576409	G3/8	VABB-B10-20-A
8026208	G1/2	VABB-B10-25-A
8026334	G3/4	VABB-B10-30-A

Tech Sheet 70159



**Cover Plates for VUVS, 3/2 Way Valves**

0009	To Suit	Manufacturer's Code
576411	G3/8	VABB-B10-20-E-P3
8026210	G1/2	VABB-B10-25-E-P3
8026336	G3/4	VABB-B10-30-E-P3

Tech Sheet 70161



**Cover Plates for VUVS, 5/2 & 5/3 Way Valves**

0009	To Suit	Manufacturer's Code
576410	G3/8	VABB-B10-20-E
8026209	G1/2	VABB-B10-25-E
8026335	G3/4	VABB-B10-30-E

Tech Sheet 70160



# ELECTRICALLY ACTUATED DIRECTIONAL CONTROL VALVES

# FESTO



## VUVS-L Series, Solenoid Valves, Type B, with 24V DC Solenoid Coil



**3/2 Way, Normally Closed, Single Solenoid Valve with Internal Pilot Supply**

0009	Thread	Size mm	Function	LPM	Manufacturer's Code
575481	G1/4	25	Mechanical Spring	1000	VUVS-L25-M32C-MD-G14-F8-1B2
575574	G3/8	30	Mechanical Spring	2300	VUVS-L30-M32C-MD-G38-F8-1B2
Tech Sheet 71579					



**5/2 Way, Single Solenoid Valve with Internal Pilot Supply**

0009	Thread	Size mm	Function	LPM	Manufacturer's Code
575513	G1/4	25	Mechanical Spring	1300	VUVS-L25-M52-MD-G14-F8-1B2
575606	G3/8	30	Mechanical Spring	2300	VUVS-L30-M52-MD-G38-F8-1B2
Tech Sheet 71580					



**5/2 Way, Double Solenoid Valve with Internal Pilot Supply**

0009	Thread	Size mm	Function	LPM	Manufacturer's Code
575520	G1/4	25	Mechanical Spring	1300	VUVS-L25-B52-D-G14-F8-1B2
575613	G3/8	30	Mechanical Spring	2300	VUVS-L30-B52-D-G38-F8-1B2
Tech Sheet 71581					

**5/3 Way, Closed Mid Position, Solenoid Valve with Internal Pilot Supply**

0009	Thread	Size mm	Function	LPM	Manufacturer's Code
575527	G1/4	25	Mechanical Spring	1200	VUVS-L25-P53C-MD-G14-F8-1B2
575620	G3/8	30	Mechanical Spring	2300	VUVS-L30-P53C-MD-G38-F8-1B2
Tech Sheet 71582					

**5/3 Way, Exhausted Mid Position, Solenoid Valve with Internal Pilot Supply**

0009	Thread	Size mm	Function	LPM	Manufacturer's Code
575541	G1/4	25	Mechanical Spring	1000	VUVS-L25-P53E-MD-G14-F8-1B2
Tech Sheet 71583					

## VUVS-L Series, Solenoid Valves, Type C, with 24V DC Solenoid Coil



**5/3 Way, Closed Mid Position, Solenoid Valve with Internal Pilot Supply**

0009	Thread	Size mm	Function	LPM	Manufacturer's Code
575266	G1/8	20	Mechanical Spring	600	VUVS-L20-P53E-MD-G18-F7-1C1
Tech Sheet 71584					

# SOLENOID CONTROL VALVES

## Solenoid Valves

Technical Data	1/8"	1/4"	3/8"	1/2"	Namur
Operating pressure:					
monostable bar			2.5 to 10		
bistable bar			1 to 10		
external pilot assisted bar			Vacuum to 10		
Minimum pilot pressure bar			2.5		
Operating temperature range					
			-10°C to +60°C		
Nominal diameter mm	5	7.5	13.3	15	7.5
Conductance C NI/min - bar	121.43	264.26	505.52	971.43	264.26
Critical ratio b bar/bar	0.32	0.27	0.32	0.43	0.27
Flow rate at 6 bar ΔP 0.5 bar NI/min	400	750	1560	3200	750
Flow rate at 6 bar ΔP 1 bar NI/min	550	1100	2150	4600	1100
TRA / TRR monostable at 6 bar ms	15/35	19/45	21/72	36/60	7/15
TRA / TRR bistable at 6 bar ms	20/20	21/21	18/18	30/30	7/7
Coil voltage values					
			12; 24 VDC - 24; 110; 220 V AC 50/60Hz		
Power					
			2 W (DC) 3.5VA (AC)		
Voltage tolerance %					
			-10 to +15		
Insulation class					
			F 155		

## Namur Interface Solenoid/Spring Valve



### G1/4 Ports

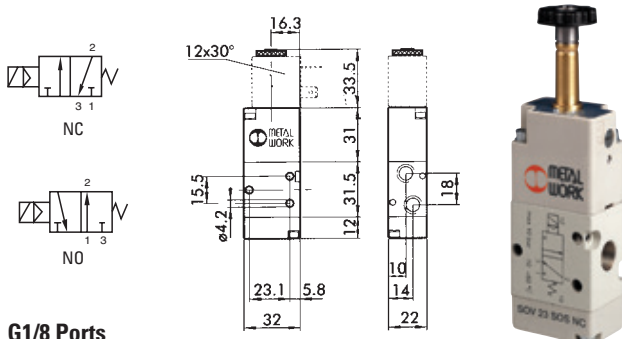
9149	Description
7021020100	Single Solenoid 5/2 G1/4"

## Namur Interface Solenoid/Solenoid Valve

### G1/4 Ports

9149	Description
7021020200	Double Solenoid 5/2 G1/4"

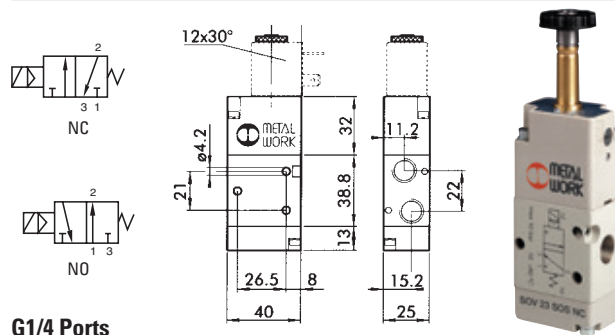
## 3/2 Solenoid/Spring Valve, Normally Open



### G1/8 Ports

9149	Description
7010020400	3/2 G1/8" NO

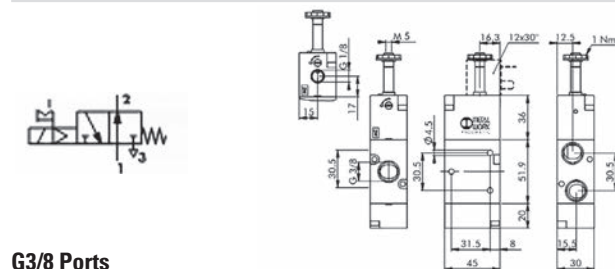
## 3/2 Solenoid/Spring Valve, Normally Open



### G1/4 Ports

9149	Description
7020020400	3/2 G1/4" NO

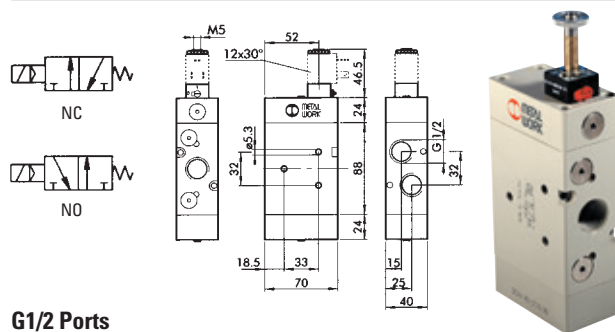
## 3/2 Solenoid/Spring Valve, Normally Open



### G3/8 Ports

9149	Description
7040020400	3/2 G3/8" NO

## 3/2 Solenoid/Spring Valve, Normally Open



### G1/2 Ports

9149	Description
7030020400	3/2 G1/2" NO Spring



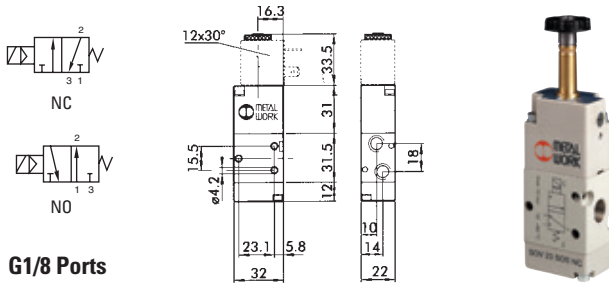
For Pre wired  
moulded DIN Plugs  
see page 1043



# SOLENOID CONTROL VALVES



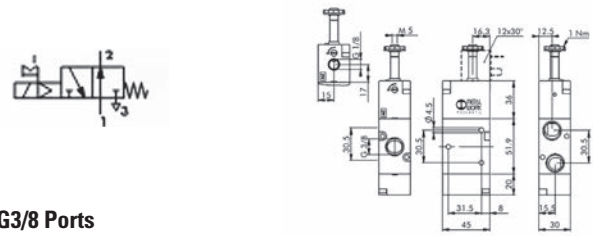
## 3/2 Solenoid/Spring Valve, Normally Closed



G1/8 Ports

9149	Description
7010020200	3/2 G1/8" NC

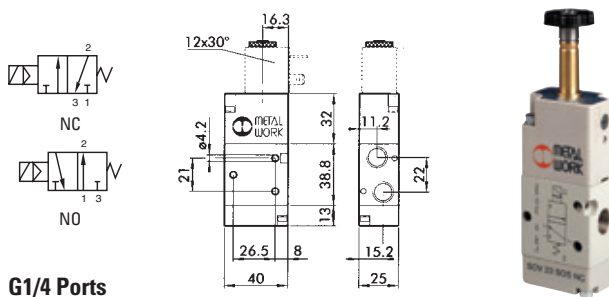
## 3/2 Solenoid/Spring Valve, Normally Open Assisted



G3/8 Ports

9149	Description
7040020600	3/2 G3/8" NO ASS

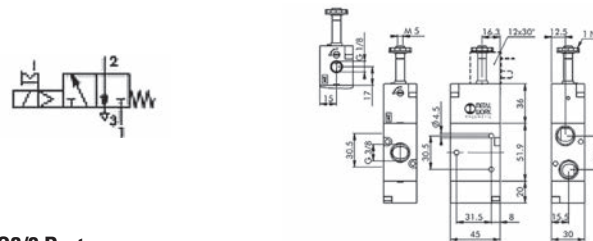
## 3/2 Solenoid/Spring Valve, Normally Closed



G1/4 Ports

9149	Description
7020020200	3/2 G1/4" NC

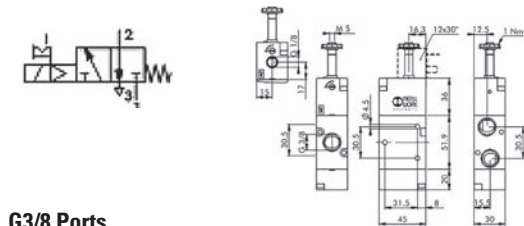
## 3/2 Solenoid/Spring Valve, Normally Closed Assisted



G3/8 Ports

9149	Description
7040020500	3/2 G3/8" NC ASS

## 3/2 Solenoid/Spring Valve, Normally Closed



G3/8 Ports

9149	Description
7040020200	3/2 G3/8" NC

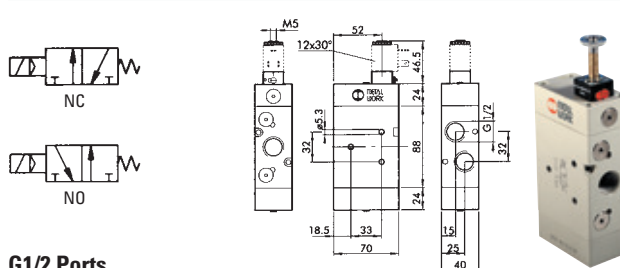
## 3/2 Solenoid/Solenoid Valve, Normally Closed



G3/8 Ports

9149	Description
7040020100	3/2 G3/8" NC

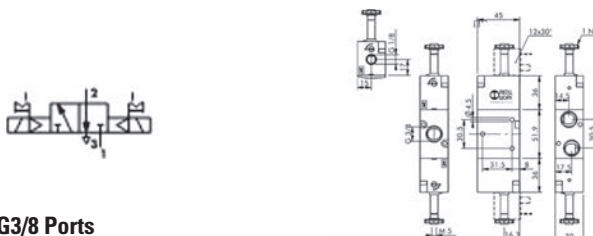
## 3/2 Solenoid/Spring Valve, Normally Closed



G1/2 Ports

9149	Description
7030020200	3/2 G1/2 NC Spring

## 3/2 Solenoid/Solenoid Valve, Normally Closed Assisted



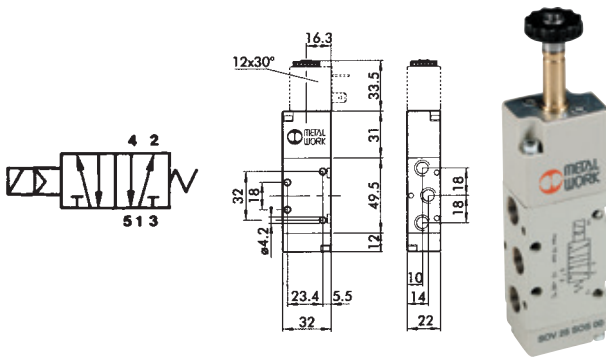
G3/8 Ports

9149	Description
7040020300	3/2 G3/8" ASS

# SOLENOID CONTROL VALVES

## 5/2 Solenoid/Spring Valve

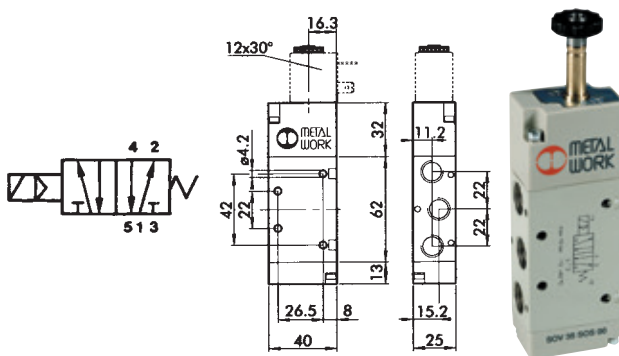
Note: solenoid coils must be ordered separately.



### G1/8 Ports

9149	Description
7010021100	5/2 G1/8"

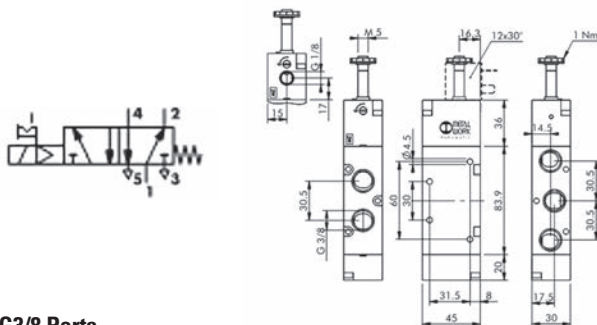
## 5/2 Solenoid/Spring Valve



### G1/4 Ports

9149	Description
7020021100	5/2 G1/4"

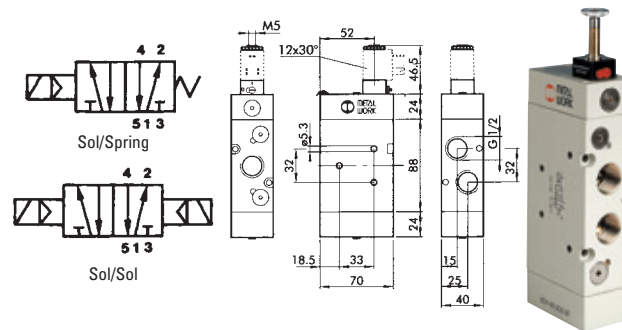
## 5/2 Solenoid/Spring Valve



### G3/8 Ports

9149	Description
7040021100	5/2 G3/8"

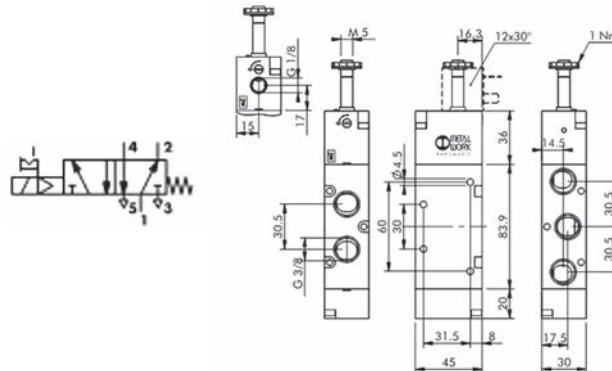
## 5/2 Solenoid/Spring Valve



### G1/2 Ports

9149	Description
7030021100	5/2 G1/2" Sol/Spring

## 5/2 Solenoid/Spring Valve, Assisted



### G3/8 Ports

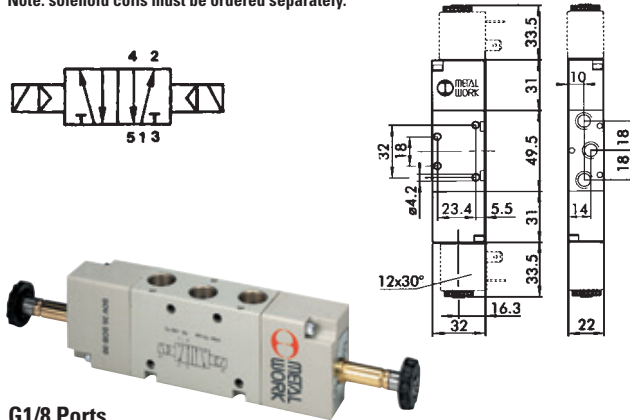
9149	Description
7040021500	5/2 G3/8" ASS

# SOLENOID CONTROL VALVES



## 5/2 Solenoid/Solenoid Valve

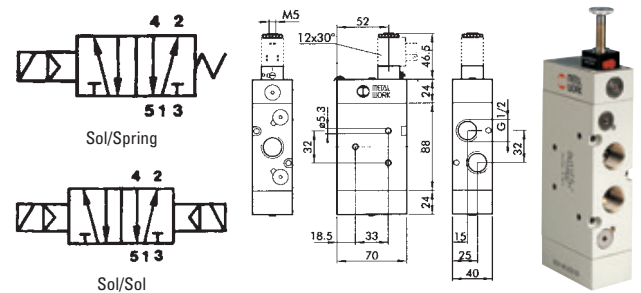
Note: solenoid coils must be ordered separately.



G1/8 Ports

9149	Description
7010021200	5/2 G1/8"

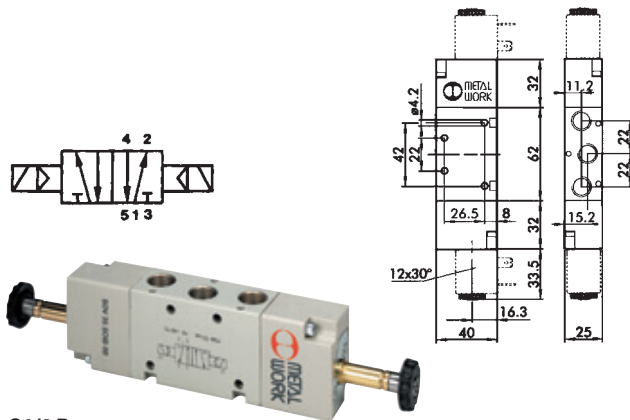
## 5/2 Solenoid/Solenoid Valve



G1/2 Ports

9149	Description
7030021200	5/2 G1/2" Sol/Sol

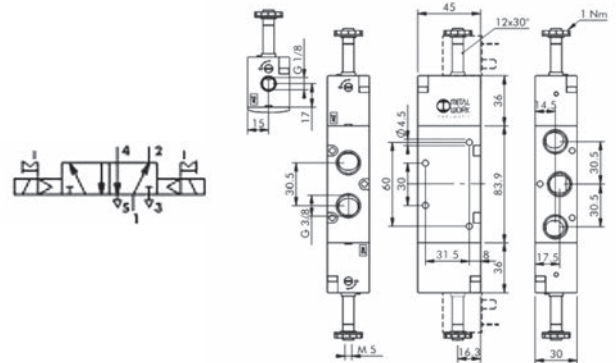
## 5/2 Solenoid/Solenoid Valve



G1/4 Ports

9149	Description
7020021200	5/2 G1/4"

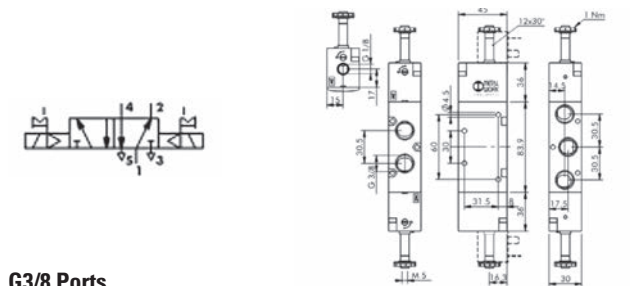
## 5/2 Solenoid/Solenoid Valve, Differential



G3/8 Ports

9149	Description
7040021300	5/2 G3/8"

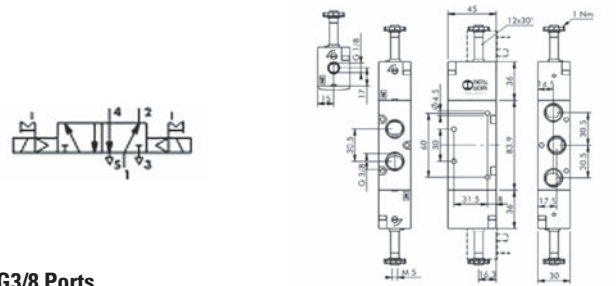
## 5/2 Solenoid/Solenoid Valve



G3/8 Ports

9149	Description
7040021200	5/2 G3/8"

## 5/2 Solenoid/Solenoid Valve, Assisted



G3/8 Ports

9149	Description
7040021600	5/2 G3/8" ASS

# SOLENOID CONTROL VALVES

## 5/3 Solenoid/Spring/Solenoid Valve, Pressure Centres

### Technical Data

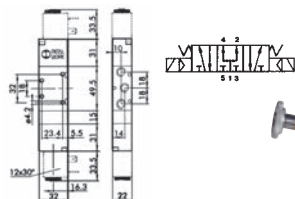
- Nominal diameter: 7.5mm
- Flow rate at 6 bar  $\Delta P$  0.5 bar: 750 NI/min
- Flow rate at 6 bar  $\Delta P$  1 bar: 1100 NI/min
- **Note:** solenoid coils must be ordered separately.

**Operating Temperature Range:**  
10°C to +60°C

**Operating Temperature Range:**  
-10°C to +60°C

**Maximum Temperature at 100% Solenoid rating:**  
+70°C at +20°C ambient

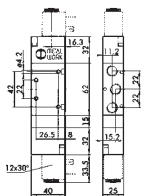
**Minimum Actuation Pressure:**  
2.5 bar



### G1/8 Ports

9149	Description
7010022300	5/3 G1/8" PC

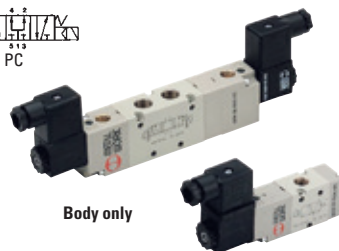
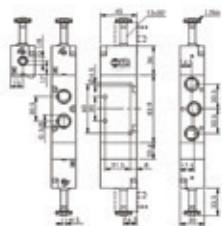
## 5/3 Solenoid/Spring/Solenoid Valve, Pressure Centres



### G1/4 Ports

9149	Description
7020022300	5/3 G1/4" PC

## 5/3 Solenoid/Spring/Solenoid Valve, Pressure Centres



Body only

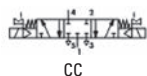
### G3/8 Ports

9149	Description
7040022300	5/3 G3/8" PC

## 5/3 Solenoid/Spring/Solenoid Valve, Closed Centres

### G3/8 Ports

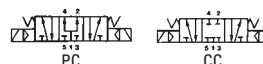
9149	Description
7040022100	5/3 G3/8" CC



## 5/3 Solenoid/Spring/Solenoid Valve, Pressure Centres

### Technical Data

- Monostable solenoid/spring: 2.5 bar to 10 bar
- Bistable solenoid/solenoid: 1 to 10 bar
- Nominal diameter: 15mm
- Flow rate at 6 bar  $\Delta P$  1 bar: 4600NI/min
- Absorbed power: 2W (DC) 3VA (AC)
- Voltages tolerances: -10°C to +15°C
- Degree of protection: IP65 - DIN 40050
- Solenoid rating: 100% ED



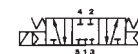
### G1/2 Ports

9149	Description
7030022300	G1/2" PC Solenoid

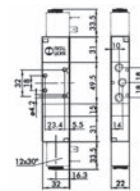
## 5/3 Solenoid/Spring/ Solenoid Valve, Closed Centres

### G1/2 Ports

9149	Description
7030022100	G1/2" CC Solenoid



## 5/3 Solenoid/Spring/Solenoid Valve, Closed Centres



### G1/8 Ports

9149	Description
7010022100	5/3 G1/8" CC

## 5/3 Solenoid/Spring/Solenoid Valve, Closed Centres

### G1/4 Ports

9149	Description
7020022100	5/3 G1/4" CC



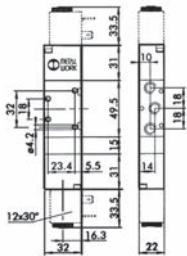
# SOLENOID CONTROL VALVES

## 5/3 Solenoid/Spring/Solenoid Valve, Open Centres

### Technical Data

- Nominal diameter: 7.5mm
- Flow rate at 6 bar  $\Delta P$  0.5 bar: 750 NI/min
- Flow rate at 6 bar  $\Delta P$  1 bar: 1100 NI/min
- **Note: solenoid coils must be ordered separately.**

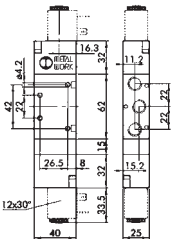
**Operating Temperature range:**  
-10°C to +60°C



### G1/8 Ports

9149	Description
7010022200	5/3 G1/8" OC

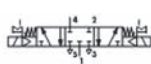
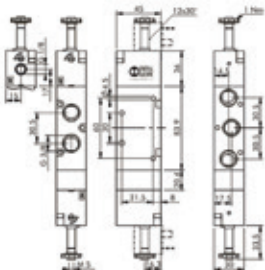
## 5/3 Solenoid/Spring/Solenoid Valve, Open Centres



### G1/4 Ports

9149	Description
7020022200	5/3 G1/4" OC

## 5/3 Solenoid/Spring/Solenoid Valve, Open Centres



### G3/8 Ports

9149	Description
7040022200	5/3 G3/8" OC

## 5/3 Solenoid/Spring/Solenoid Valve, Open Centres

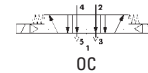
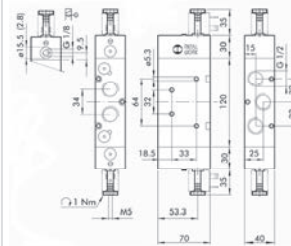
### Technical Data

- Monostable solenoid/spring: 2.5 bar to 10 bar
- Bistable solenoid/solenoid: 1 to 10 bar
- Nominal diameter: 15mm
- Flow rate at 6 bar  $\Delta P$  1 bar: 4600NI/min
- Absorbed power: 2W (DC) 3VA (AC)
- Voltages tolerances: -10°C to +15°C
- Degree of protection: IP65 - DIN 40050
- Solenoid rating: 100% ED

**Operating Temperature Range:**  
-10°C to +60°C

**Maximum Temperature at 100% Solenoid rating:**  
+70°C at +20°C ambient

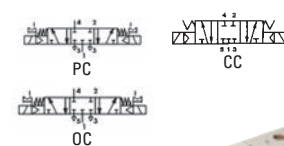
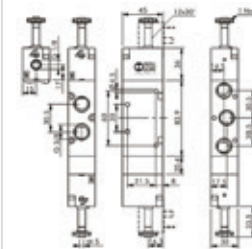
**Minimum Actuation Pressure:**  
2.5 bar



### G1/2 Ports

9149	Description
7030022200	G1/2" OC Solenoid

## 5/3 Solenoid/Spring/Solenoid Valve, Pressure Centres Assisted



### G3/8 Ports

9149	Description
7040022600	5/3 G3/8" PC ASS

## 5/3 Solenoid/Spring/Solenoid Valve, Closed Centres Assisted

### G3/8 Ports

9149	Description
7040022400	5/3 G3/8" CC ASS

## 5/3 Solenoid/Spring/Solenoid Valve, Open Centres Assisted

### G3/8 Ports

9149	Description
7040022500	5/3 G3/8" OC ASS

# SOLENOID CONTROL VALVES

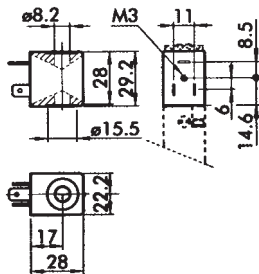
## Solenoid Coils for ISO 5599 Valves, Size 1

### Technical Data

- Voltage tolerances: -10% to +15%
- Insulation class: F155
- Degree of protection: IP65 - DIN 40050
- Solenoid rating: 100%
- Electric contact: AMP DIN 43650 2 contacts + 1 earth

**Operating Temperature Range:**  
-20°C to +120°C

**Maximum Temperature at 100% Solenoid Rating:**  
+70°C at +20°C ambient temperature



### 22mm

9149	Nominal Voltage	Power Inrush	Input Holding	Type
W0215000101	24V DC	2W	2W	22 Ø8 BA 2W-24V DC
W0215000111	24V 50/60Hz	4VA	3VA	22 Ø8 BA 3V-24V AC
W0215000121	110V 50/60Hz	4VA	2W	22 Ø8 BA 3VA-110V AC
W0215000131	220V 50/60Hz	4VA	2W	22 Ø8 3VA-220V AC

## Solenoid Coils, 5W

### Technical Data

- Monostable solenoid/spring: 2.5 bar to 10 bar
- Bistable solenoid/solenoid: 1 to 10 bar
- Nominal diameter: 15mm
- Flow rate at 6 bar  $\Delta P$  1 bar: 4600NI/min
- Absorbed power: 2W (DC) 3VA (AC)
- Voltages tolerances: -10°C to +15°C
- Degree of protection: IP65 - DIN 40050
- Solenoid rating: 100% ED
- **Note: solenoid coils must be ordered separately.**

**Operating Temperature Range:**  
-10°C to +60°C

**Maximum Temperature at 100% Solenoid Rating:**  
+70°C at +20°C ambient temperature

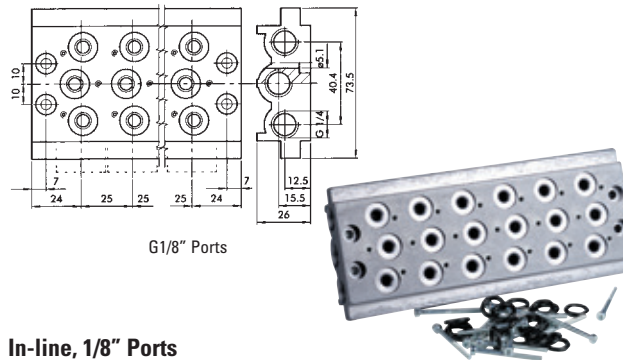
**Minimum Actuation Pressure:**  
2.5 bar



### 22mm

9182	Nominal Voltage	Power Inrush	Input Holding	Type
W0215000001	24V DC	5W	5W	22 Ø8 5W-24V DC
W0215000011	24V 50/60Hz	8VA	5VA	22 Ø8 5VA-24V AC
W0215000021	110V 50/60Hz	8VA	5VA	22 Ø8 5VA-110V AC
W0215000031	220V 50/60Hz	8VA	5VA	22 Ø8 5W-220V AC

## Manifolds

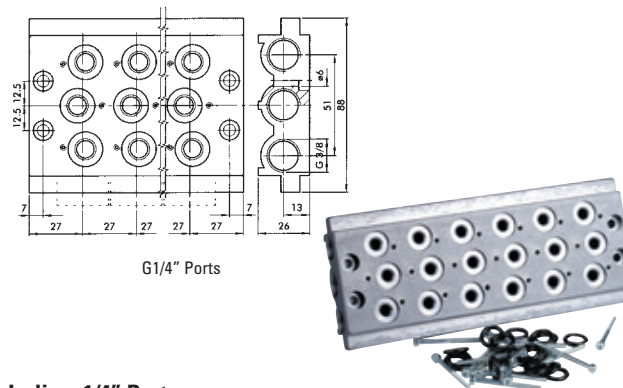


G1/8" Ports

### In-line, 1/8" Ports

9149	Description
0223000201	2 Position
0223000301	3 Position
0223000401	4 Position
0223000501	5 Position
0223000601	6 Position
0223000701	7 Position
0226004500	Blanking Plate Size 1/8"

## Manifolds



G1/4" Ports

### In-line, 1/4" Ports

9149	Description
0224000201	2 Position
0224000401	4 Position
0224000501	5 Position
0224000601	6 Position
0224000701	7 Position
0226004500	Blanking Plate Size 1/8"
0226005500	Blanking Plate Size 1/4"



For Pre wired moulded DIN Plugs  
see page 1043





# EXCEL 32 V03, V04 & V05 SERIES



- Extensive range of power and orifice size option
- G1/8, G1/4 and 7mm interface
- Compact installation
- Removable coil
- Standard exhaust diffuser
- Choice of manual override

### Medium:

Compressed air, filtered, lubricated and non-lubricate

### Materials:

Coil: Glass reinforced nylon

Armature: Stainless steel

### Base:

Zinc alloy (G1/8), brass (G1/4), polyester (interface)

Seals: Nitrile (viton top seat)

### Working Temperature:

-20°C to +50°C

**Note:** the below valves are only available in 24V DC.

5

## V03 Series

### V03 2/2 NC 24V DC 0-10 bar 1mm Orific

0036	Thread
V03A286J-B613A	G1/8
Tech Sheet 10363	

### V03 3/2 NC 24V DC 0-10 bar 1mm Orific

0036	Thread
V03X486J-B613A	Interface
V03A486J-B613A	G1/8
Tech Sheet 10363	

## V04 Series

### V04 2/2 SOL NC 0-10 bar 2.5mm Orific

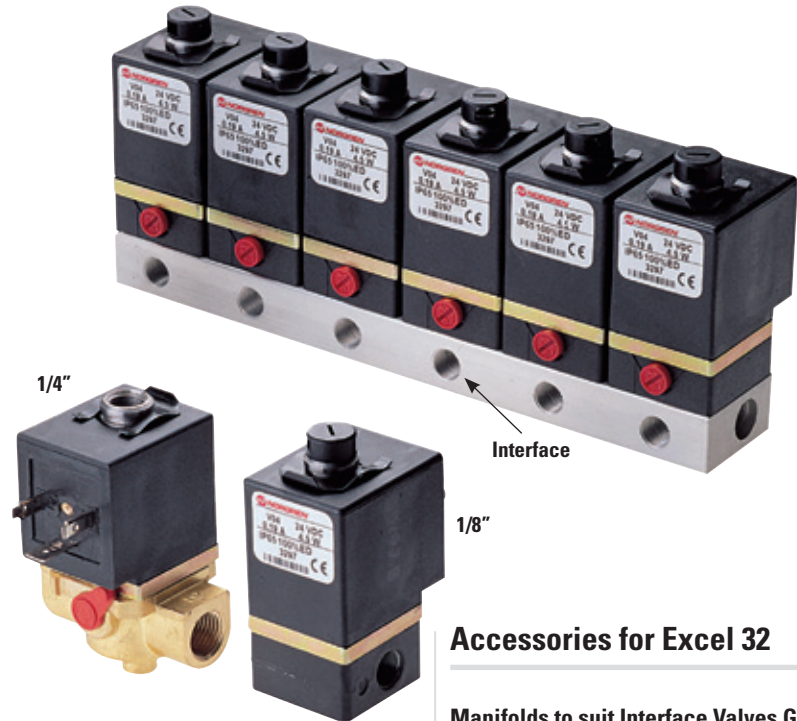
0036	Thread	Voltage
V04X286M-B623A	Interface	24V DC
V04A286M-B623A	G1/8	24V DC
V04A286M-B628A	G1/8	110/50-60
V04A286M-B629A	G1/8	220/50-60
V04B286M-B423A	G1/4	24V DC
V04B286M-B428A	G1/4	220/50-60
V04B286M-B429A	G1/4	220/50-60
Tech Sheet 10363		

### V04 3/2 SOL NC 0-10 bar 2mm Orific

0036	Thread	Voltage
V04X486L-B623A	Interface	24V DC
V04X486L-B628A	Interface	110/50-60
V04X486L-B629A	Interface	220/50-60
V04A486L-B623A	G1/8	24V DC
V04A486L-B628A	G1/8	110/50-60
V04A486L-B629A	G1/8	220/50-60
Tech Sheet 10363		

### V04 3/2 SOL NO 0-10 bar 2mm Orific

0036	Thread	Voltage
V04X386L-B623A	Interface	24V DC
V04X386L-B628A	Interface	110/50-60
V04X386L-B629A	Interface	220/50-60
V04A386L-B623A	G1/8	24V DC
V04A386L-B628A	G1/8	110/50-60
V04A386L-B629A	G1/8	220/50-60
Tech Sheet 10363		



## V05 Series

### V05 2/2 SOL NC 0-16 bar 2.5mm Orific

0036	Thread	Voltage
V05X286M-B633A	Interface	24V DC
V05X286M-B638A	Flange	110/120V
V05B286M-B433A	G1/4	24V DC
Tech Sheet 10363		

### V05 3/2 SOL NC 0-10 bar 2.5mm Orific

0036	Thread	Voltage
V05X486M-B633A	Interface	24V DC
V05X486M-B638A	Interface	110/50-60
V05X486M-B639A	Interface	220/50-60
V05A486M-B633A	G1/8	24V DC
V05A486M-B638A	G1/8	110/50-60
V05A486M-B639A	G1/8	220/50-60
Tech Sheet 10363		

## Accessories for Excel 32

### Manifolds to suit Interface Valves G1/8

0036	No. of Stations
M/P35598/1	1
M/P35598/2	2
M/P35598/3	3
M/P35598/4	4
M/P35598/5	5
M/P35598/6	6
M/P35598/8	8
M/P35598/9	9
M/P35598/10	10
Tech Sheet 10363	

### V03, V04 & V05 Spare Solenoid Coils

0036	To Suit	Voltage
V03X286A-Q1213	V03	24V DC
V04X286A-Q1228	V04	110/50-60
V04X286A-Q1229	V04	220/50-60
V05X286A-Q1233	V05	24V DC
V05X286A-Q1238	V05	110/50-60
V05X286A-Q1239	V05	220/50-60
Tech Sheet 10363		

## In-line Valves Solenoid/Pilot Operated

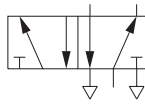
### High Flow Rates:

G1/8 - 750 L/min, G1/4 - 1,300 L/min,  
G3/8 - 2,600 L/min, G1/2 - 4,200 L/min available

**Multifunctional:** 3/2, 2x 3/2, 5/2, 5/3

**Medium:** Compressed air, filtered to 50micron, lubricated or non-lubricated

- Maintenance free
- Proven sealing system
- Small volumetric size
- Multiple solenoid/manual override variations



### Solenoid Actuated, BSPP

0036	Thread	Function	Actuation
V60A413A-A2000	1/8"	3/2 NC	Sol/Spring
V60A513A-A2000	1/8"	5/2	Sol/Spring
V60A511A-A3000	1/8"	5/2	Sol/Sol
V61B413A-A2000	1/4"	3/2 NC	Sol/Spring
V61B513A-A2000	1/4"	5/2	Sol/Spring
V61B511A-A3000	1/4"	5/2	Sol/Sol
V62C413A-A2000	3/8"	3/2 NC	Sol/Spring
V62C513A-A2000	3/8"	5/2	Sol/Spring
V62C511A-A3000	3/8"	5/2	Sol/Sol

Tech Sheet 20152



### Pilot Actuated, BSPP

0036	Thread	Function	Actuation
V60A4D7A-XA090	1/8"	3/2 NC	Pilot/Spring
V60A5D7A-XA090	1/8"	5/2	Pilot/Spring
V60A5DDA-XA020	1/8"	5/2	Pilot/Pilot
V61B4D7A-XA090	1/4"	3/2 NC	Pilot/Spring
V61B5D7A-XA090	1/4"	5/2	Pilot/Spring
V61B5DDA-XA020	1/4"	5/2	Pilot/Pilot
V62C4D7A-XA090	3/8"	3/2 NC	Pilot/Spring
V62C5D7A-XA090	3/8"	5/2	Pilot/Spring
V62C5DDA-XA020	3/8"	5/2	Pilot/Pilot

Tech Sheet 20152

## V60 Accessories



### Solenoid Coils 22mm DIN EN 175 301-803 (DIN 43650 B)

0036	Voltage
V10626-A13L	24V DC-2W
V10626-A18L	110V AC-4/2.5W
V10626-A19L	240V AC-6/5VA

Tech Sheet 20152

# EXCEL 22 M/48 & M/49 SERIES

## Solenoid Actuated 22mm Poppet Valves



### M5 3/2 Sol/Spring Sub-base

0036	Voltage
M/48/MAZ13J	24V DC
M/48/MAZ19J	220V AC

Tech Sheet 20154



### G1/8 3/2 Sol/Spring Sub-base

0036	Voltage
M/49/MAZ14J	24V AC
M/49/MAZ13J	24V DC
M/49/MAZ18J	110V AC
M/49/MAZ19J	220V AC

Tech Sheet 20154



### Spare Coils

0036	Voltage
QM/48/13J/21	24V DC
QM/48/14J/21	24V AC
QM/48/18J/21	110V AC
QM/48/19J/21	220V AC

Tech Sheet 20154



### Spare DIN 22mm Plug

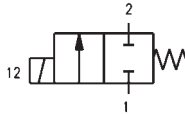
0036	Voltage
M/P19063	

Tech Sheet 20154

# DIRECTIONAL CONTROL VALVES

## Series A, Directly Operated Solenoid Valves

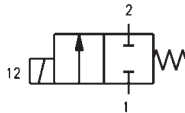
5



**M5, 2/2 NC Solenoid Valves (A32)**

0158	Orifice mm	Voltage
<b>A321 0C2</b>	1.5	Valve Only
<b>A321 0C2 U72</b>	1.5	12V DC 5W
<b>A321 0C2 U73</b>	1.5	24V DC 5W
<b>A321 0C2 U74</b>	1.5	48V DC 5.3W
<b>A321 0C2 U76</b>	1.5	110V DC 4.2W
<b>A321 0C2 U7H</b>	1.5	24V AC 3.5VA
<b>A321 0C2 U7K</b>	1.5	110V AC 4.3VA
<b>A321 0C2 U7J</b>	1.5	240V AC 4VA

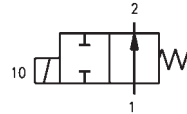
Tech Sheet 1845



**G1/8\", 2/2 NC Solenoid Valves (A32)**

0158	Orifice mm	Voltage
<b>A321 1C2</b>	1.5	Valve Only
<b>A321 1C2 U72</b>	1.5	12V DC 5W
<b>A321 1C2 U73</b>	1.5	24V DC 5W
<b>A321 1C2 U74</b>	1.5	48V DC 5.3W
<b>A321 1C2 U76</b>	1.5	110V DC 4.2W
<b>A321 1C2 U7H</b>	1.5	24V AC 3.5VA
<b>A321 1C2 U7K</b>	1.5	110V AC 4.3VA
<b>A321 1C2 U7J</b>	1.5	240V AC 4VA
<b>A321 1D2</b>	2	Valve Only
<b>A321 1D2 U72</b>	2	12V DC 5W
<b>A321 1D2 U73</b>	2	24V DC 5W
<b>A321 1D2 U74</b>	2	48V DC 5.3W
<b>A321 1D2 U76</b>	2	110V DC 4.2W
<b>A321 1D2 U7H</b>	2	24V AC 3.5VA
<b>A321 1D2 U7K</b>	2	110V AC 4.3VA
<b>A321 1D2 U7J</b>	2	240V AC 4VA
<b>A321 1E2</b>	2.5	Valve Only
<b>A321 1E2 U72</b>	2.5	12V DC 5W
<b>A321 1E2 U73</b>	2.5	24V DC 5W
<b>A321 1E2 U74</b>	2.5	48V DC 5.3W
<b>A321 1E2 U76</b>	2.5	110V DC 4.2W
<b>A321 1E2 U7H</b>	2.5	24V AC 3.5VA
<b>A321 1E2 U7K</b>	2.5	110V AC 4.3VA
<b>A321 1E2 U7J</b>	2.5	240V AC 4VA

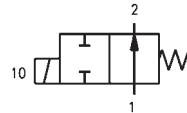
Tech Sheet 1845



**M5, 2/2 NO Solenoid Valves (A32)**

0158	Orifice mm	Voltage
<b>A322 0C2</b>	1.8	Valve Only
<b>A322 0C2 U72</b>	1.8	12V DC 5W
<b>A322 0C2 U73</b>	1.8	24V DC 5W
<b>A322 0C2 U74</b>	1.8	48V DC 5.3W
<b>A322 0C2 U76</b>	1.8	110V DC 4.2W
<b>A322 0C2 U7H</b>	1.8	24V AC 3.5VA
<b>A322 0C2 U7K</b>	1.8	110V AC 4.3VA
<b>A322 0C2 U7J</b>	1.8	240V AC 4VA

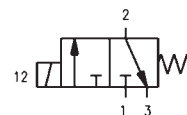
Tech Sheet 1845



**G1/8\", 2/2 NO Solenoid Valves (A32)**

0158	Orifice mm	Voltage
<b>A322 1C2</b>	1.8	Valve Only
<b>A322 1C2 U72</b>	1.8	12V DC 5W
<b>A322 1C2 U73</b>	1.8	24V DC 5W
<b>A322 1C2 U74</b>	1.8	48V DC 5.3W
<b>A322 1C2 U76</b>	1.8	110V DC 4.2W
<b>A322 1C2 U7H</b>	1.8	24V AC 3.5VA
<b>A322 1C2 U7K</b>	1.8	110V AC 4.3VA
<b>A322 1C2 U7J</b>	1.8	240V AC 4VA

Tech Sheet 1845



**M5, 3/2 NC Solenoid Valves (A33)**

0158	Orifice mm	Voltage
<b>A331 0C2</b>	1.5	Valve Only
<b>A331 0C2 U72</b>	1.5	12V DC 5W
<b>A331 0C2 U73</b>	1.5	24V DC 5W
<b>A331 0C2 U74</b>	1.5	48V DC 5.3W
<b>A331 0C2 U76</b>	1.5	110V DC 4.2W
<b>A331 0C2 U7H</b>	1.5	24V AC 3.5VA
<b>A331 0C2 U7K</b>	1.5	110V AC 4.3VA
<b>A331 0C2 U7J</b>	1.5	240V AC 4VA

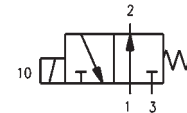
Tech Sheet 1845



**G1/8\", 3/2 NC Solenoid Valves (A33)**

0158	Orifice mm	Voltage
<b>A331 1C2</b>	1.5	Valve Only
<b>A331 1C2 U72</b>	1.5	12V DC 5W
<b>A331 1C2 U73</b>	1.5	24V DC 5W
<b>A331 1C2 U74</b>	1.5	48V DC 5.3W
<b>A331 1C2 U76</b>	1.5	110V DC 4.2W
<b>A331 1C2 U7H</b>	1.5	24V AC 3.5VA
<b>A331 1C2 U7K</b>	1.5	110V AC 4.3VA
<b>A331 1C2 U7J</b>	1.5	240V AC 4VA

Tech Sheet 1845



**M5, 3/2 NO Solenoid Valves (A33)**

0158	Orifice mm	Voltage
<b>A332 0C2</b>	1.5	Valve Only
<b>A332 0C2 U72</b>	1.5	12V DC 5W
<b>A332 0C2 U73</b>	1.5	24V DC 5W
<b>A332 0C2 U74</b>	1.5	48V DC 5.3W
<b>A332 0C2 U76</b>	1.5	110V DC 4.2W
<b>A332 0C2 U7H</b>	1.5	24V AC 3.5VA
<b>A332 0C2 U7K</b>	1.5	110V AC 4.3VA
<b>A332 0C2 U7J</b>	1.5	240V AC 4VA

Tech Sheet 1845

**G1/8\", 3/2 NO Solenoid Valves (A33)**

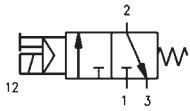
0158	Orifice mm	Voltage
<b>A332 1C2</b>	1.5	Valve Only
<b>A332 1C2 U72</b>	1.5	12V DC 5W
<b>A332 1C2 U73</b>	1.5	24V DC 5W
<b>A332 1C2 U74</b>	1.5	48V DC 5.3W
<b>A332 1C2 U76</b>	1.5	110V DC 4.2W
<b>A332 1C2 U7H</b>	1.5	24V AC 3.5VA
<b>A332 1C2 U7K</b>	1.5	110V AC 4.3VA
<b>A332 1C2 U7J</b>	1.5	240V AC 4VA

Tech Sheet 1845

# DIRECTIONAL CONTROL VALVES

## Series 3, Electro Pneumatically Operated Solenoid Valves

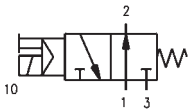
**Actuation:**  
Solenoid/Spring



### G1/8", 3/2 NC Single Solenoid Valves (338)

0158	Voltage
338 015 02	Valve Only
338 015 02 U7H	24V 50/60Hz 3.5VA
338 015 02 U7K	110V 50/60Hz 3.5VA
338 015 02 U7J	240V 50/60Hz 4VA
338 015 02 U72	12V DC 5W
338 015 02 U73	24V DC 5W
338 015 02 U74	48V DC 5W
338 015 02 U76	110V DC 5W
338 015 02 U77	24V DC 3W

Tech Sheet 1847

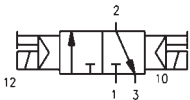


### G1/8", 3/2 NO Single Solenoid Valves (348)

0158	Voltage
348 015 02	Valve Only
348 015 02 U7H	24V 50/60Hz 3.5VA
348 015 02 U7K	110V 50/60Hz 3.5VA
348 015 02 U7J	240V 50/60Hz 4VA
348 015 02 U72	12V DC 5W
348 015 02 U73	24V DC 5W
348 015 02 U74	48V DC 5W
348 015 02 U76	110V DC 5W
348 015 02 U77	24V DC 3W

Tech Sheet 1847

**Actuation:**  
Solenoid/Solenoid

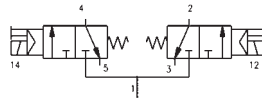


### G1/8", 3/2 Manual Override Double Solenoid Valves (338)

0158	Voltage
338 011 02 U7H	24V 50/60Hz 3.5VA
338 011 02 U7K	110V 50/60Hz 3.5VA
338 011 02 U7J	240V 50/60Hz 4VA
338 011 02 U72	12V DC 5W
338 011 02 U73	24V DC 5W
338 011 02 U74	48V DC 5W
338 011 02 U76	110V DC 5W
338 011 02 U77	24V DC 3W

Tech Sheet 1847

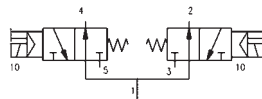
**Actuation:**  
Solenoid/Spring



### G1/8", 3/2 x 3/2 NC Double Valves S.R. Solenoid Valves (338)

0158	Voltage
338D 015 02	Valve Only
338D 015 02 U7H	24V 50/60Hz 3.5VA
338D 015 02 U7K	110V 50/60Hz 3.5VA
338D 015 02 U7J	240V 50/60Hz 4VA
338D 015 02 U72	12V DC 5W
338D 015 02 U73	24V DC 5W
338D 015 02 U74	48V DC 5W
338D 015 02 U76	110V DC 5W
338D 015 02 U77	24V DC 3W

Tech Sheet 1847

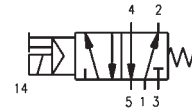


### G1/8", 3/2 x 3/2 NO Double Valves S.R. Solenoid Valves (348)

0158	Voltage
348D 015 02	Valve Only
348D 015 02 U7H	24V 50/60Hz 3.5VA
348D 015 02 U7K	110V 50/60Hz 3.5VA
348D 015 02 U7J	240V 50/60Hz 4VA
348D 015 02 U72	12V DC 5W
348D 015 02 U73	24V DC 5W
348D 015 02 U74	48V DC 5W
348D 015 02 U76	110V DC 5W
348D 015 02 U77	24V DC 3W

Tech Sheet 1847

**Actuation:**  
Solenoid/Spring

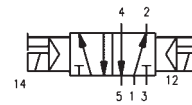


### G1/8", 5/2 Manual Override Single Solenoid Valves (358)

0158	Voltage
358 015 02	Valve Only
358 015 02 U7H	24V 50/60Hz 3.5VA
358 015 02 U7K	110V 50/60Hz 3.5VA
358 015 02 U7J	240V 50/60Hz 4VA
358 015 02 U72	12V DC 5W
358 015 02 U73	24V DC 5W
358 015 02 U74	48V DC 5W
358 015 02 U76	110V DC 5W
358 015 02 U77	24V DC 3W

Tech Sheet 1847

**Actuation:**  
Solenoid/Solenoid



### G1/8", 5/2 Manual Override Double Solenoid Valves (358)

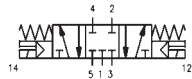
0158	Voltage
358 011 02	Valve Only
358 011 02 U7H	24V 50/60Hz 3.5VA
358 011 02 U7K	110V 50/60Hz 3.5VA
358 011 02 U7J	240V 50/60Hz 4VA
358 011 02 U72	12V DC 5W
358 011 02 U73	24V DC 5W
358 011 02 U74	48V DC 5W
358 011 02 U76	110V DC 5W
358 011 02 U77	24V DC 3W

Tech Sheet 1847

# DIRECTIONAL CONTROL VALVES

## Series 3, Electro Pneumatically Operated Solenoid Valves

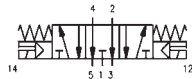
Actuation: Solenoid/Solenoid



### G1/8", 5/3 C/C Double Solenoid Valves (368)

0158	Voltage
368 011 02	Valve Only
368 011 02 U7H	24V 50/60Hz 3.5VA
368 011 02 U7K	110V 50/60Hz 3.5VA
368 011 02 U7J	240V 50/60Hz 4VA
368 011 02 U72	12V DC 5W
368 011 02 U73	24V DC 5W
368 011 02 U74	48V DC 5W
368 011 02 U76	110V DC 5W
368 011 02 U77	24V DC 3W

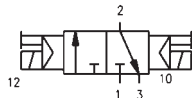
Tech Sheet 1847



### G1/8", 5/3 C/O Double Solenoid Valves (378)

0158	Voltage
378 011 02	Valve Only
378 011 02 U7H	24V 50/60Hz 3.5VA
378 011 02 U7K	110V 50/60Hz 3.5VA
378 011 02 U7J	240V 50/60Hz 4VA
378 011 02 U72	12V DC 5W
378 011 02 U73	24V DC 5W
378 011 02 U74	48V DC 5W
378 011 02 U76	110V DC 5W
378 011 02 U77	24V DC 3W

Tech Sheet 1847



### G1/8", 5/3 NC & NO Double Valve P/C Double Solenoid Valves (388)

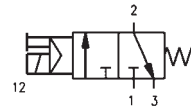
0158	Voltage
388 011 02	Valve Only
388 011 02 U7H	24V 50/60Hz 3.5VA
388 011 02 U7K	110V 50/60Hz 3.5VA
388 011 02 U7J	240V 50/60Hz 4VA
388 011 02 U72	12V DC 5W
388 011 02 U73	24V DC 5W
388 011 02 U74	48V DC 5W
388 011 02 U76	110V DC 5W
388 011 02 U77	24V DC 3W

Tech Sheet 1847



## Series 3, Electro Pneumatically Operated High Flow Solenoid Valves

Actuation: Solenoid/Spring



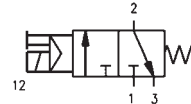
### G1/4", 3/2 NC Single Solenoid Valves (334)

0158	Voltage
334 015 02	Valve Only
334 015 02 U7H	24V 50/60Hz 3.5VA
334 015 02 U7K	110V 50/60Hz 3.5VA
334 015 02 U7J	230V 50/60Hz 4VA
334 015 02 U72	12V DC 5W
334 015 02 U73	24V DC 5W
334 015 02 U74	48V DC 5W
334 015 02 U76	110V DC 5W
334 015 02 U77	24V DC 3W

Tech Sheet 1847



Actuation: Solenoid/Spring

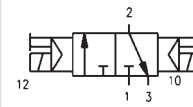


### G1/4", 3/2 NC External Servo Single Solenoid Valves (334)

0158	Voltage
334 E15 02	Valve Only
334 E15 02 U7H	24V 50/60Hz 3.5VA
334 E15 02 U7K	110V 50/60Hz 3.5VA
334 E15 02 U7J	230V 50/60Hz 4VA
334 E15 02 U72	12V DC 5W
334 E15 02 U73	24V DC 5W
334 E15 02 U74	48V DC 5W
334 E15 02 U76	110V DC 5W
334 E15 02 U77	24V DC 3W

Tech Sheet 1847

Actuation: Solenoid/Solenoid



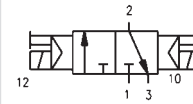
### G1/4", 3/2 NC Double Solenoid Valves (334)

0158	Voltage
334 011 02	Valve Only
334 011 02 U7H	24V 50/60Hz 3.5VA
334 011 02 U7K	110V 50/60Hz 3.5VA
334 011 02 U7J	230V 50/60Hz 4VA
334 011 02 U72	12V DC 5W
334 011 02 U73	24V DC 5W
334 011 02 U74	48V DC 5W
334 011 02 U76	110V DC 5W
334 011 02 U77	24V DC 3W

Tech Sheet 1847



Actuation: Solenoid/Solenoid



### G1/4", 3/2 External Servo Double Solenoid Valves (334)

0158	Voltage
334 E11 02	Valve Only
334 E11 02 U7H	24V 50/60Hz 3.5VA
334 E11 02 U7K	110V 50/60Hz 3.5VA
334 E11 02 U7J	230V 50/60Hz 4VA
334 E11 02 U72	12V DC 5W
334 E11 02 U73	24V DC 5W
334 E11 02 U74	48V DC 5W
334 E11 02 U76	110V DC 5W
334 E11 02 U77	24V DC 3W

Tech Sheet 1847

# DIRECTIONAL CONTROL VALVES

## Series 3, Electro Pneumatically Operated High Flow Solenoid Valves

Actuation: Solenoid/Spring

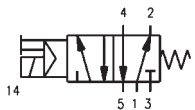


### G1/4", 5/2 Single Solenoid Valves (354)

0158	Voltage
354 015 02	Valve Only
354 015 02 U7H	24V 50/60Hz 3.5VA
354 015 02 U7K	110V 50/60Hz 3.5VA
354 015 02 U7J	230V 50/60Hz 4VA
354 015 02 U72	12V DC 5W
354 015 02 U73	24V DC 5W
354 015 02 U74	48V DC 5W
354 015 02 U76	110V DC 5W
354 015 02 U77	24V DC 3W

Tech Sheet 1847

Actuation: Solenoid/Spring

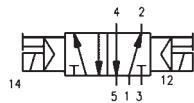


### G1/4", 5/2 External Servo Single Solenoid Valves (354)

0158	Voltage
354 E15 02	Valve Only
354 E15 02 U7H	24V 50/60Hz 3.5VA
354 E15 02 U7K	110V 50/60Hz 3.5VA
354 E15 02 U7J	230V 50/60Hz 4VA
354 E15 02 U72	12V DC 5W
354 E15 02 U73	24V DC 5W
354 E15 02 U74	48V DC 5W
354 E15 02 U76	110V DC 5W
354 E15 02 U77	24V DC 3W

Tech Sheet 1847

Actuation: Solenoid/Solenoid



### G1/4", 5/2 Double Solenoid Valves (354)

0158	Voltage
354 011 02	Valve Only
354 011 02 U7H	24V 50/60Hz 3.5VA
354 011 02 U7K	110V 50/60Hz 3.5VA
354 011 02 U7J	230V 50/60Hz 4VA
354 011 02 U72	12V DC 5W
354 011 02 U73	24V DC 5W
354 011 02 U74	48V DC 5W
354 011 02 U76	110V DC 5W
354 011 02 U77	24V DC 3W

Tech Sheet 1847

Actuation: Solenoid/Solenoid



### G1/4", 5/3 C/C Manual Override Double Solenoid Valves (364)

0158	Voltage
364 011 02	Valve Only
364 011 02 U7H	24V 50/60Hz 3.5VA
364 011 02 U7K	110V 50/60Hz 4.3VA
364 011 02 U7J	240V 50/60Hz 4VA
364 011 02 U72	12V DC 5W
364 011 02 U73	24V DC 5W
364 011 02 U74	48V DC 5W
364 011 02 U76	110V DC 4.2W
364 011 02 U77	24V DC 3W

Tech Sheet 1847



### G1/4", 5/3 C/C Manual Override Double Solenoid Valves External Pilot (364)

0158	Voltage
364 E11 02	Valve Only
364 E11 02 U7H	24V 50/60Hz 3.5VA
364 E11 02 U7K	110V 50/60Hz 4.3VA
364 E11 02 U7J	240V 50/60Hz 4VA
364 E11 02 U72	12V DC 5W
364 E11 02 U73	24V DC 5W
364 E11 02 U74	48V DC 5W
364 E11 02 U76	110V DC 4.2W
364 E11 02 U77	24V DC 3W

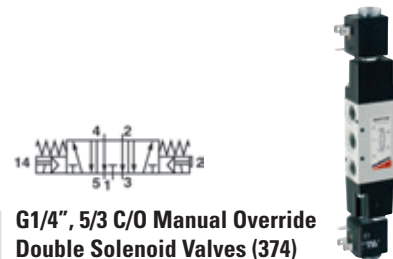
Tech Sheet 1847

### G1/4", 5/2 External Servo Double Solenoid Valves (354)



0158	Voltage
354 E11 02	Valve Only
354 E11 02 U7H	24V 50/60Hz 3.5VA
354 E11 02 U7K	110V 50/60Hz 3.5VA
354 E11 02 U7J	230V 50/60Hz 4VA
354 E11 02 U72	12V DC 5W
354 E11 02 U73	24V DC 5W
354 E11 02 U74	48V DC 5W
354 E11 02 U76	110V DC 5W
354 E11 02 U77	24V DC 3W

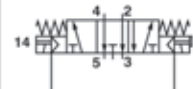
Tech Sheet 1847



### G1/4", 5/3 C/O Manual Override Double Solenoid Valves (374)

0158	Voltage
374 011 02	Valve Only
374 011 02 U7H	24V 50/60Hz 3.5VA
374 011 02 U7K	110V 50/60Hz 4.3VA
374 011 02 U7J	240V 50/60Hz 4VA
374 011 02 U72	12V DC 5W
374 011 02 U73	24V DC 5W
374 011 02 U74	48V DC 5W
374 011 02 U76	110V DC 4.2W
374 011 02 U77	24V DC 3W

Tech Sheet 1847



### G1/4", 5/3 C/O Manual Override Double Solenoid Valves External Pilot (374)

0158	Voltage
374 E11 02	Valve Only
374 E11 02 U7H	24V 50/60Hz 3.5VA
374 E11 02 U7K	110V 50/60Hz 4.3VA
374 E11 02 U7J	240V 50/60Hz 4VA
374 E11 02 U72	12V DC 5W
374 E11 02 U73	24V DC 5W
374 E11 02 U74	48V DC 5W
374 E11 02 U76	110V DC 4.2W
374 E11 02 U77	24V DC 3W

Tech Sheet 1847

# DIRECTIONAL CONTROL VALVES

## Solenoid Coils for Electro Pneumatically Operated Valves

- Solenoid DIN connector use Form B.



### U70 Solenoid Coils

0158	Voltage
U7H	24V 50/60Hz 3.5VA
U7K	110V 50/60Hz 3.5VA
U7J	240V 50/60Hz 4VA
U77	24V DC 3W
U71	6V DC 5W
U72	12V DC 5W
U73	24V DC 5W
U74	48V DC 5W
U76	110V DC 5W
Tech Sheet 10313	

- Solenoid DIN connector use Form B.



### G70 Solenoid Coils

0158	Voltage
G7H	24V 50/60Hz 3.5VA
G7K	110V 50/60Hz 3.5VA
G7J	240V 50/60Hz 4VA
G79	48V DC 3W
G77	24V DC 3W
G72	12V DC 5W
G73	24V DC 5W
G76	110V DC 4W
Tech Sheet 10313	

- Solenoid DIN connector use Form A.



### A80 Solenoid Coils

0158	Voltage
A8B	24V 50/60Hz 5VA
A8D	110V 50/60Hz 5VA
A8E	220V 50/60Hz 5VA
A83	24V DC 4W
A84	48V DC 4W
A86	110V DC 4W
Tech Sheet 10313	

- Solenoid DIN connector use Form B.



### G80 Solenoid Coils

0158	Voltage
G93	24V Coil
Tech Sheet 10313	

## Solenoid DIN Connectors



### Black Connectors

0158	Type
KA132000B9	Form A 18mm Pin Spacing
KB132000B9	Form B 11mm Pin Spacing
Tech Sheet 10313	



### Grey Connectors

0158	Type
KA132000A9	Form A 18mm Pin Spacing
Tech Sheet 10313	



### Transparent Connectors, with LED

0158	Type
KA132V54T9	Form A 18mm Pin Spacing, 24V
KA132V55T9	Form A 18mm Pin Spacing, 115V
KA132V56T9	Form A 18mm Pin Spacing, 230V
KB132V54T9	Form B 11mm Pin Spacing, 24V
KB132V55T9	Form B 11mm Pin Spacing, 115V
KB132V56T9	Form B 11mm Pin Spacing, 230V
Tech Sheet 10313	

For **Banding & Tie Wraps**  
see page 1553



## Solenoid 5/2 Way Valve

The **Viking Lite** valve range is robust, versatile and combines high performance with compact installation dimensions. The choice of G1/8, G1/4 or G3/8 port sizes provide large flow capacity and short change-over times. Low change-over pressure is also an important characteristic of this valve range.

Under pressure, radial expansion of the seal occurs to maintain sealing contact with the valve bore.

This sealing method reduces friction and gives lower pilot pressures, providing fast response and less wear. Valves do not require lubrication in operation but they can also be installed in systems that are lubricated.

**Working Temperature:**  
-10°C to +50°C

**Maximum Working Pressure:**  
10 bar



### Spring Return, Single Solenoid, BSPP

0681	Thread
P2LAZ511ESNDCN	1/8"
P2LBZ512ESNDCN	1/4"

Tech Sheet 68763

## Solenoid Coils & Plugs

### Solenoid Coils, 22mm

0681	Voltage
P2FCB449	24V DC
P2FCB453	110V AC
P2FCB457	230V AC

Tech Sheet 68763



### Connector Plug, IP65

0681	
3EV10V10	

Tech Sheet 68763



### Plug with LED & Protection

0681	To Suit
3EV10V20-110	110V AC

Tech Sheet 68763



## Pilot & Solenoid Valves

### B3 & B4 Series Coils 15mm

0681	Voltage
P2E-KV32B2	12V DC
P2E-KV32C2	24V DC



### B3 & B4 Series Solenoid Connectors / Cable Plugs

0681	Description
P8C-D	Standard IP65 without Flying Lead



### Viking Lite Valve 3/2 & 5/2 Solenoid Operated G1/8" - G1/4"

0681	Type	Actuator	Return	Thread BSPP
P2LBZ312ESNDCN	3-2	Electric	Spring	1/4"
P2LBZ512EENDCN	5-2	Electric	Electric	1/4"
P2LAZ511ESNDCN	5-2	Electric	Spring	1/8"



## 3/2 PNEUMATIC VALVES



### ECO 22 Solenoid Valves



#### Solenoid/Spring, BSPP

0110	Thread	Function
8880.32.C.39.F00	1/8"	Normally Closed

### ECO 22 Solenoid Valves - 1/4"



#### Solenoid/Spring, BSPP

0110	Thread	Function
8884.32.C.39.F00	1/4"	Normally Closed
8884.32.A.39.F00	1/4"	Normally Open

## 5/2 PNEUMATIC VALVES



### Eco 22 Solenoid Valves



#### Solenoid/Spring Valves, BSPP

0110	Thread
8880520039F00	1/8"
8884520039F00	1/4"



#### Solenoid/Solenoid, BSPP

0110	Thread
8880520035F00	1/8"
8884520035F00	1/4"

### 400 Series Valves



#### Solenoid/Spring, BSPP

0110	Thread
412/2.52.0.1.M2	1/2"



#### Solenoid/Solenoid, BSPP

0110	Thread
412/2.52.0.0.M2	1/2"

### T400 Series Tecno Eco Valves



#### Solenoid/Spring (Ext Pilot), BSPP

0110	Thread
T424.52.0.1.E.M2	1/4"

### T488 Series Tecno Valves



#### Solenoid/Differential Pilot (Ext Feed), BSPP

0110	Thread
T488.52.0.12E.M2	1/8"



#### Solenoid/Spring (Int Feed), BSPP

0110	Thread
T488.52.0.1.M2	1/8"

#### Solenoid/Spring (Ext Feed), BSPP

0110	Thread
T488.52.0.1E.M2	1/8"



#### Solenoid/Solenoid, BSPP

0110	Thread
T488.52.0.0.M2	1/8"

## Eco 22 Series



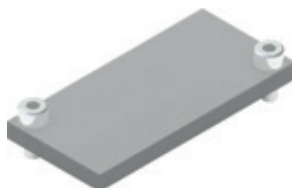
### Complete Manifolds 5/2 - 5/3

0110	Stations
888.02	2
888.03	3
888.04	4
888.05	5
888.06	6
888.07	7
888.08	8
888.09	9
888.10	10



### Modular 3/2 Solenoid/Spring Valves

0110	Thread	NO/NC
345.M1	4mm	N/C
305.M1	1/8"	N/C
305.M1/1	1/8"	N/O



### Manifold Closing Plate

0110	Description
888	Blanking Plate



### MF Type Coils

0110	Voltage
MF4	12V DC
MF5	24V DC
MF56	2V AC
MF57	110V AC
MF58	220V AC



### 888 Type Coil Caps

0110	Voltage
888.11.01	24V DC - 24V AC LED
888.11.02	110V AC LED
888.11.03	220V AC LED

## T400 Series



### Manifold Bases

0110	Description
T424.01	Single Complete Base



### Manifold Closing Plate

0110	Description
T424.00	Blanking Plate



### MB Type 22mm Coils

0110	Voltage
MB4	12V DC
MB5	24V DC
MB9	24V DC (2 watt)
MB56	24V AC
MB57	110V AC
MB58	22V DC



### 305 22mm Coil Caps

0110	Voltage
305.11.00	No LED
305.11.01L	24V DC LED
305.11.02L	110V AC LED
305.11.03L	240V AC LED

## T488 Series



### Manifold Bases

0110	Description
T488.01	Single Complete Base