



techhose

QUALITY CONNECTIONS

Hydraulics

Pneumatics
& Vacuum

Industrial

Compressed Air
& Ring Main

Process &
Instrumentation

Pneumatic & Vacuum

Solenoid Valves

PILOT VALVES



Medium: Clean compressed air. Filtered (40µm) and lubricated
Body Material: Aluminium alloy
Seals: Nitrile

Working Temperature:
 -20°C to +70°C

Working Pressure:
 1.5 to 8 bar



Pilot 3/2 Way Valves



Pilot/Spring, Normally Open, BSPP

0335	Thread
CKA210-06-NO	1/8"
CKA210-08-NO	1/4"
CKA310-10-NO	3/8"

Tech Sheet 3036



Pilot/Spring, Normally Closed, BSPP

0335	Thread
CKA210-06-NC	1/8"
CKA210-08-NC	1/4"
CKA310-10-NC	3/8"

Tech Sheet 3036



Pilot/Pilot, BSPP

0335	Thread
CKA220-06	1/8"
CKA220-08	1/4"
CKA320-10	3/8"

Tech Sheet 3036

Pilot 5/2 Way Valves



Pilot/Spring, BSPP

0335	Thread
DKA210-06	1/8"
DKA210-08	1/4"
DKA310-10	3/8"
DKA410-15	1/2"

Tech Sheet 3037



Pilot/Pilot, BSPP

0335	Thread
DKA220-06	1/8"
DKA220-08	1/4"
DKA320-10	3/8"
DKA420-15	1/2"

Tech Sheet 3037

Medium: Clean compressed air. Filtered (40µm) and lubricated
Body Material: Aluminium alloy
Seals: Nitrile

Working Temperature:
 -20°C to +70°C

Working Pressure:
 1.5 to 8 bar



Pilot 5/3 Way Valves



Pilot/Pilot, Fully Sealed Mid Position, BSPP

0335	Thread
DKA230C-06	1/8"
DKA230C-08	1/4"
DKA330C-10	3/8"
DKA430C-15	1/2"

Tech Sheet 3037



Pilot/Pilot, Centre Open Pressurised, BSPP

0335	Thread
DKA230P-06	1/8"
DKA230P-08	1/4"
DKA330P-10	3/8"
DKA430P-15	1/2"

Tech Sheet 3037



Pilot/Pilot, Supply Sealed Mid Position, BSPP

0335	Thread
DKA230E-06	1/8"
DKA230E-08	1/4"
DKA330E-10	3/8"
DKA430E-15	1/2"

Tech Sheet 3037



For **Stainless Steel Silencers**
 see page 630

Driven by Customers Designed by Metal Work



Why cut costs on components, putting quality and performance in jeopardy?
Make your systems ultra efficient with Metal Work Pneumatics.



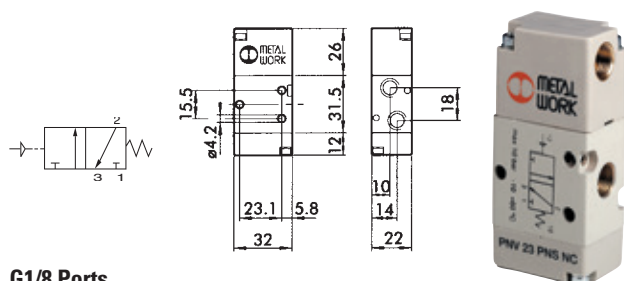
SYNTESI MONITORED DUMP VALVE

PNEUMATICALLY OPERATED VALVES

Pilot Valves

Technical Data	1/8"	1/4"	3/8"	1/2"
Operating Pressure Bar	Vacuum to 10			
Minimum pilot pressure:				
monostable bar	2.5 to 10			
bistable bar	1 to 10			
Operating temperature range	-10°C to +60°C			
Nominal diameter mm	5	7.5	13.3	15
Conductance C NI/min - bar	121.43	264.26	505.52	971.43
Critical ratio b bar/bar	0.32	0.27	0.32	0.43
Flow rate at 6 bar ΔP 0.5 bar NI/min	400	750	1560	3200
Flow rate at 6 bar ΔP 1 bar NI/min	550	1100	2150	4600
TRA / TRR monostable at 6 bar ms	6/15	7/15	5/28	16/46
TRA / TRR bistable at 6 bar ms	7/7	7/7	13/13	16/16

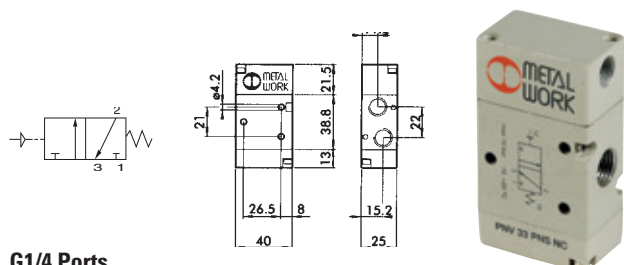
3/2 Pilot/Spring Valve



G1/8 Ports

9149	Description
7010010200	3/2 G1/8"

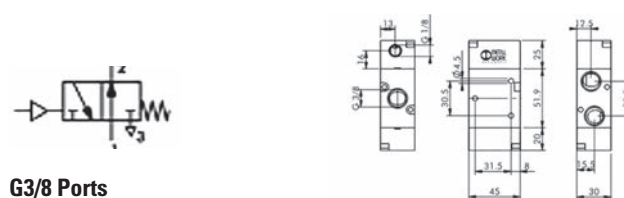
3/2 Pilot/Spring Valve



G1/4 Ports

9149	Description
7020010200	3/2 G1/4"

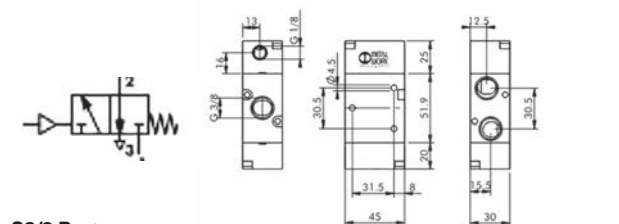
3/2 Pilot/Spring Valve



G3/8 Ports

9149	Description
7040010400	3/2 G3/8" NO

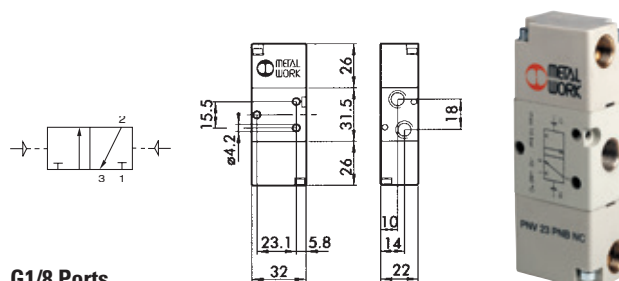
3/2 Pilot/Spring Valve, NC



G3/8 Ports

9149	Description
7040010200	3/2 G3/8"

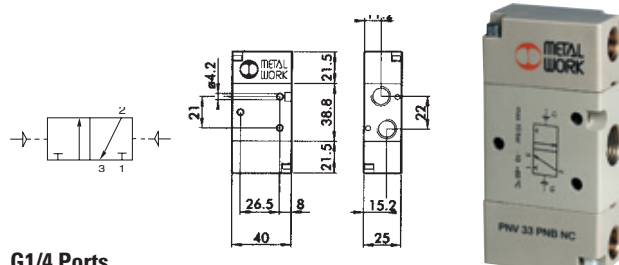
3/2 Pilot/Pilot Valve



G1/8 Ports

9149	Description
7010010100	3/2 G1/8"

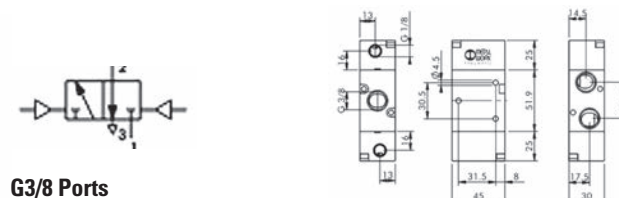
3/2 Pilot/Pilot Valve



G1/4 Ports

9149	Description
7020010100	3/2 G1/4"

3/2 Pilot/Pilot Valve, NC

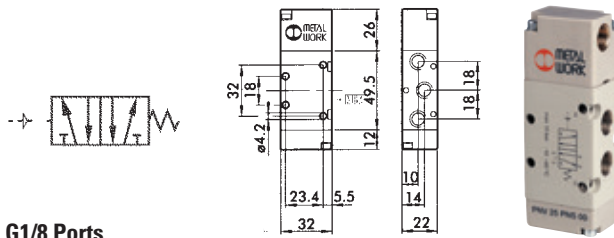


G3/8 Ports

9149	Description
7040010100	3/2 G3/8" NC

PNEUMATICALLY OPERATED VALVES

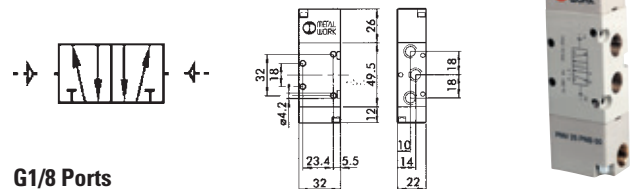
5/2 Pilot/Spring Valve



G1/8 Ports

9149	Description
7010011100	5/2 G1/8"

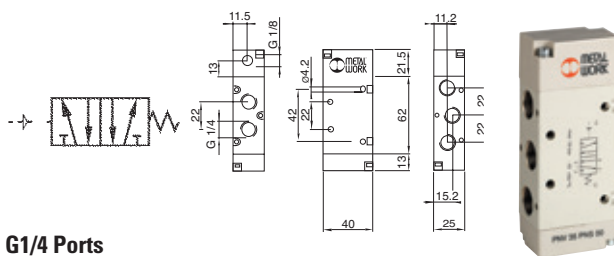
5/2 Pilot/Pilot Valve



G1/8 Ports

9149	Description
7010011200	5/2 G1/8"

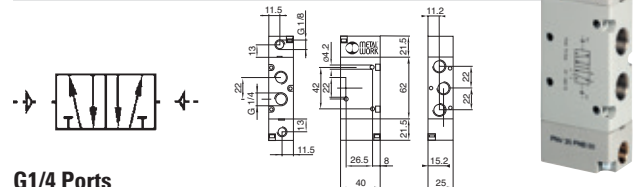
5/2 Pilot/Spring Valve



G1/4 Ports

9149	Description
7020011100	5/2 G1/4"

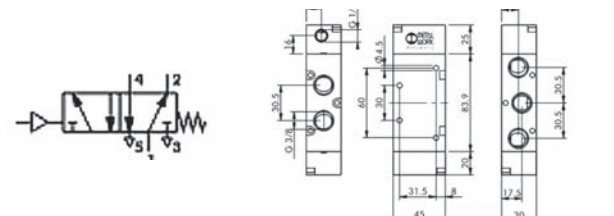
5/2 Pilot/Pilot Valve



G1/4 Ports

9149	Description
7020011200	5/2 G1/4"

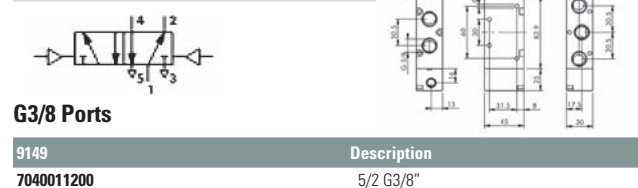
5/2 Pilot/Spring Valve



G3/8 Ports

9149	Description
7040011100	5/2 G3/8"

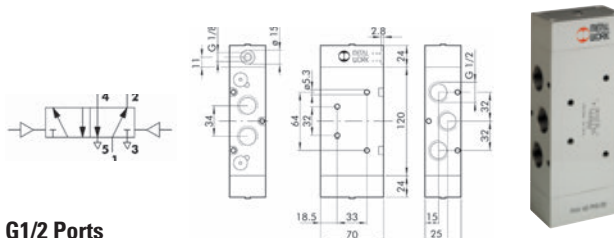
5/2 Pilot/Pilot Valve



G3/8 Ports

9149	Description
7040011200	5/2 G3/8"

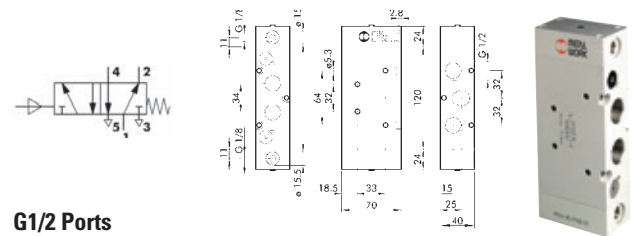
5/2 Pilot/Spring Valve



G1/2 Ports

9149	Description
7030011100	5/2 G1/2"

5/2 Pilot/Pilot Valve



G1/2 Ports

9149	Description
7030011200	5/2 G1/2"

5/2 Pilot/Pilot Valve (Differential)

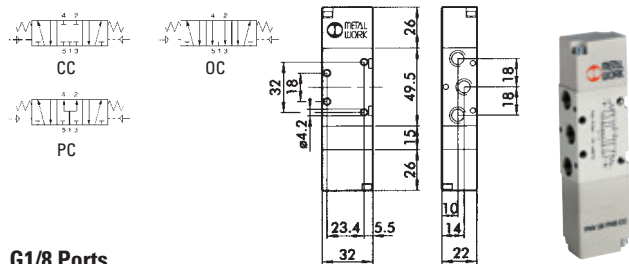


G3/8 Ports

9149	Description
7040011300	5/2 G3/8"

PNEUMATICALLY OPERATED VALVES

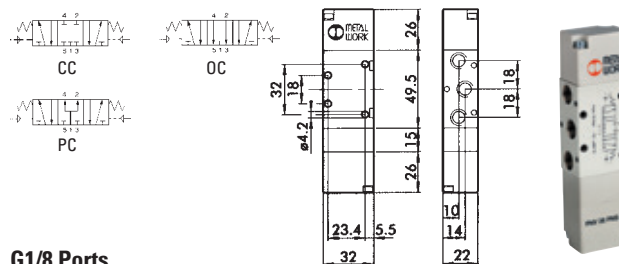
5/3 Pilot/Spring/Pilot Valve, CC



G1/8 Ports

9149	Description
7010012100	5/3 G1/8" CC

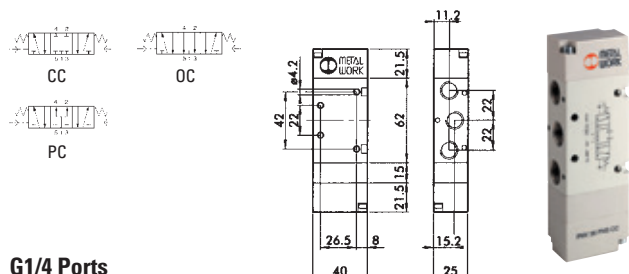
5/3 Pilot/Spring/Pilot Valve, OC



G1/8 Ports

9149	Description
7010012200	5/3 G1/8" OC

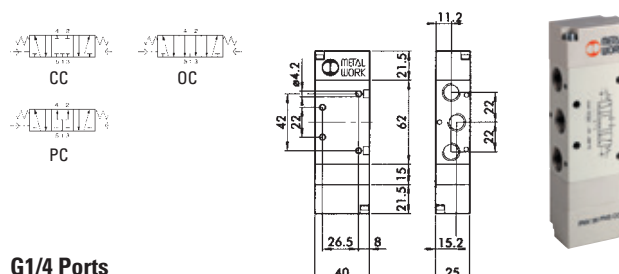
5/3 Pilot/Spring/Pilot Valve, CC



G1/4 Ports

9149	Description
7020012100	5/3 G1/4" CC

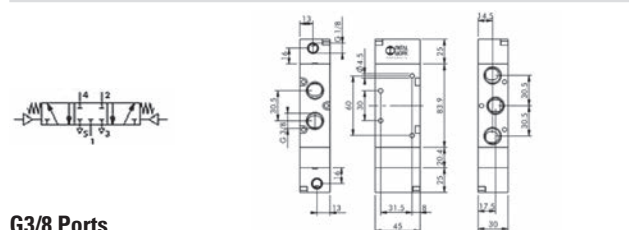
5/3 Pilot/Spring/Pilot Valve, OC



G1/4 Ports

9149	Description
7020012200	5/3 G1/4" OC

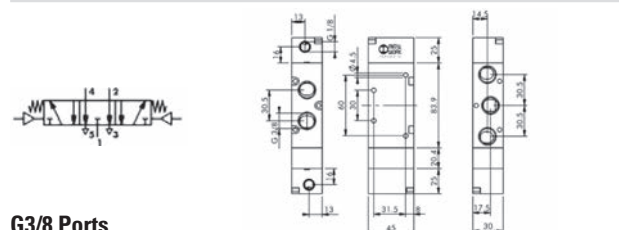
5/3 Pilot/Spring/Pilot Valve, CC



G3/8 Ports

9149	Description
7040012100	5/3 G3/8" CC

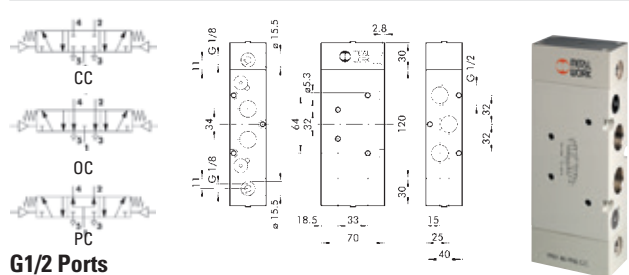
5/3 Pilot/Spring/Pilot Valve, OC



G3/8 Ports

9149	Description
7040012200	5/3 G3/8" OC

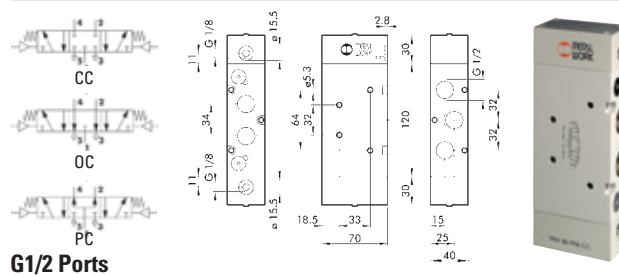
5/3 Pilot/Spring/Pilot Valve, CC



G1/2 Ports

9149	Description
7030012100	5/3 G1/2" CC

5/3 Pilot/Spring/Pilot Valve, OC

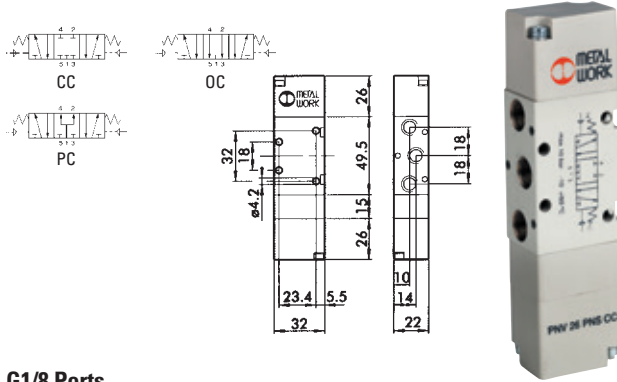


G1/2 Ports

9149	Description
7030012200	5/3 G1/2" OC

PNEUMATICALLY OPERATED VALVES

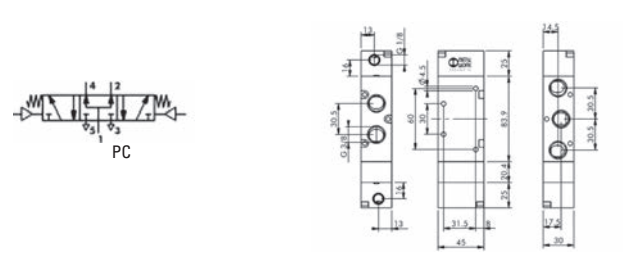
5/3 Pilot/Spring/Pilot Valve, PC



G1/8 Ports

9149	Description
7010012300	5/3 G1/8" PC

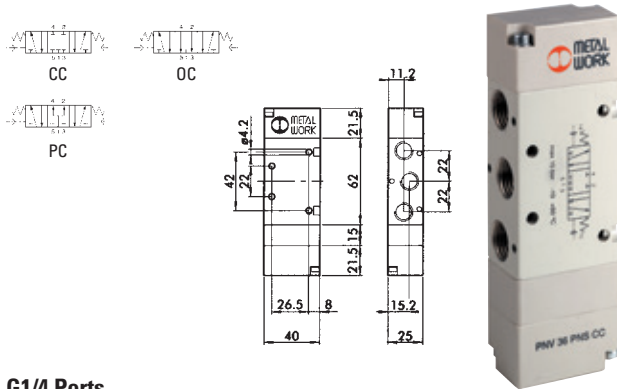
5/3 Pilot/Spring/Pilot Valve, PC



G3/8 Ports

9149	Description
7040012300	5/3 G3/8" PC

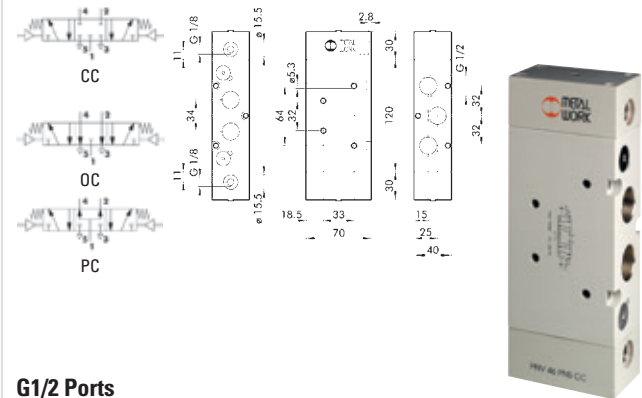
5/3 Pilot Valve, PC



G1/4 Ports

9149	Description
7020012300	5/3 G1/4" PC

5/3 Pilot/Spring/Pilot Valve, PC



G1/2 Ports

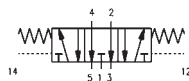
9149	Description
7030012300	5/3 G1/2" PC



For **Silencers**
see page **631**

DIRECTIONAL CONTROL VALVES

Series 3, In-line Pneumatically Operated Valves

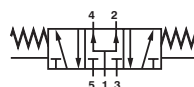
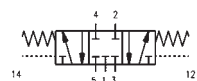


5/2 Pneumatic/Pneumatic Bistable

0158	Thread
358 033	G1/8"
354 033	G1/4"
Tech Sheet 1847	

5/3 Pneumatic Open Centres

0158	Thread
378 033	G1/8"
374 033	G1/4"
Tech Sheet 1847	



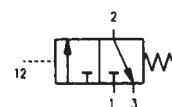
5/3 Pneumatic Closed Centres

0158	Thread
368 033	G1/8"
364 033	G1/4"
Tech Sheet 1847	

5/3 Pneumatic Pressure Centres

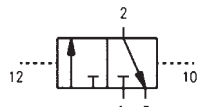
0158	Thread
388 033	G1/8"
384 033	G1/4"
Tech Sheet 1847	

Series 3, In-line Pneumatically Operated Valves



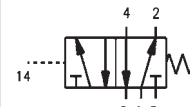
3/2 Pneumatic/Spring N/C

0158	Thread
338 035	G1/8"
338L 035	G1/8"
334 035	G1/4"
Tech Sheet 1847	



3/2 Pneumatic/Pneumatic Bistable

0158	Thread
338 033	G1/8"
338L 033	G1/8"
334 033	G1/4"
Tech Sheet 1847	



Series 3, 5/2 Pneumatic/Spring Monostable

0158	Thread
358 035	G1/8"
354 035	G1/4"
Tech Sheet 1847	

PNEUMATIC VALVES & ACCESSORIES



Pilot & Solenoid Valves



Viking Xtreme Valve 3/2 Pilot Operated G1/2"

0681	Actuator	Return	Thread BSPP
P2LDX314PS	Pilot	Spring	1/2"



Viking Xtreme G1/2" Valves Pilot & Solenoid 5/2

0681	Actuator	Return	Voltage (if applicable)
P2LDX514ESNXXX	Electric	Spring Return	Less Solenoid



ISOMAX Solenoid Operated Valves ISO 1 & 2

0681	ISO Size	Actuator	Return	Voltage (if applicable)
DX1-621-BN	1 - 43mm	Electric	Spring Return	Less Solenoid
DX2-621-BN	2 - 56mm	Electric	Spring Return	Less Solenoid
DX1-606-BN	1 - 43mm	Electric	Electric	Less Solenoid
DX2-606-BN	2 - 56mm	Electric	Electric	Less Solenoid



Side Ported Manifold & End Plates ISO 1 & 2

0681	Description	Ported	Port Size	ISO Size
P2N-EM512MD	Manifold	Side	1/4" BSPP	1 - 43mm



Heavy-duty Pilot 3/2 Poppet Valve G1/2"

0681	Actuator	Return
B203P	Pilot	Spring

3/2 PNEUMATIC VALVES

Series 224 Pilot



Pilot/Spring Return, BSPP

0110	Thread	Function
224.32.11.1	1/4"	Normally Closed



Pilot/Pilot, BSPP

0110	Thread	Function
224.32.11.11	1/4"	Normally Closed

Series T224 Tecno Eco



Pilot/Spring Return

0110	Thread	Function
T224.32.11.1	1/4"	Normally Closed



Pilot/Pilot

0110	Thread	Function
T224.32.11.11	1/4"	Normally Closed

Series T200 Pilot



Pilot/Spring Return, BSPP

0110	Thread	Function
T228.32.11.1	1/8"	Normally Closed



Pilot/Pilot, BSPP

0110	Thread	Function
T228.32.11.11	1/8"	Normally Closed

Series T400 Tecno Eco Pilot



Pilot/Spring Return, BSPP

0110	Thread	Function
T488.32.11.1	1/8"	Normally Closed



Pilot/Pilot, BSPP

0110	Thread	Function
T488.32.11.11	G1/8"	Normally Closed

Series 212 Pilot



Pilot/Spring Return, BSPP

0110	Thread	Function
212/2.32.11.1	1/2"	Normally Closed



Pilot/Pilot, BSPP

0110	Thread	Function
212/2.32.11.11	1/2"	Normally Closed

200 Series Pilot Valves - 1/8"



200 Series Pilot/Spring Return 3/2 - G1/8"

0110	Description	Port Size
228.32.11.1	Pilot-Spring	G1/8"



200 Series Amplified Pilot/Spring Return 3/2 - G1/8"

0110	Description	Port Size
228.32.13.1	Amplified Pilot-Spring	G1/8"



200 Series Pilot/Pilot 3/2 - G1/8"

0110	Description	Port Size
228.32.11.11	Pilot-Pilot	G1/8"
228.32.11.12	Pilot-Ext Differential	G1/8"

5/2 PNEUMATIC VALVES



Series 200 Pilot

Pilot/Spring Return, BSPP

0110	Thread
228.52.11.1	1/8"



Amplified Pilot/Spring Return, BSPP

0110	Thread
228.52.13.1	1/8"



Pilot/Pilot

0110	Thread
228.52.11.11	1/8"



Pilot/Pilot Differential External

0110	Thread
228.52.11.12	1/8"



Series 224 Pilot

Pilot/Spring Return, BSPP

0110	Thread
224.52.11.1	1/4"



Pilot/Pilot, BSPP

0110	Thread
224.52.11.11	1/4"



Series 212 Pilot

Pilot/Spring Return, BSPP

0110	Thread
212/2.52.11.1	1/2"



Pilot/Pilot, BSPP

0110	Thread
212/2.52.11.12	1/2"



Series T200 Tecno Pilot

Pilot/Spring Return, BSPP

0110	Thread
T228.52.11.1	1/8"



Pilot/Pilot, BSPP

0110	Thread
T228.52.11.11	1/8"



Series T224 Tecno Eco

Pilot/Spring Return, BSPP

0110	Thread
T224.52.11.1	1/4"



Pilot/Pilot, BSPP

0110	Thread
T224.52.11.11	1/4"



Series T400 Tecno Pilot

Pilot/Spring Return, BSPP

0110	Thread
T488.52.11.1	1/8"



Pilot/Pilot, BSPP

0110	Thread
T488.52.11.11	1/8"



5/3 PNEUMATIC VALVES



Series 224 Pilot

Pilot/Pilot, BSPP

0110	Thread	Function
224.53.31.11.11	1/4"	Closed Centre



Series 224 Tecno Eco

Pilot/Pilot, BSPP

0110	Thread	Function
T224.53.31.11.11	1/4"	Closed Centre
T224.53.32.11.11	1/4"	Open Centre



Series T400 Tecno Eco

Pilot/Pilot, BSPP

0110	Thread	Function
T488.53.31.11.11	1/8"	Closed Centre

