



# techhose

QUALITY CONNECTIONS

Hydraulics

Pneumatics  
& Vacuum

Industrial

Compressed Air  
& Ring Main

Process &  
Instrumentation

---

## Pneumatic & Vacuum

---

Manual & Mechanical Valves

## Panel Mount Valves, Manual & Mechanical 3/2 Way Valves

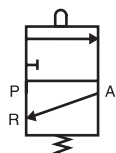
**Medium:** Clean compressed air. Filtered (40µm)

**Material:** Valve body aluminium alloy

**Seals:** Nitrile

**Working Temperature:**  
-20°C to +70°C

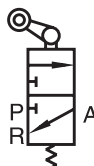
**Maximum Working Pressure:**  
10 bar



### Basic Valve, Metric & BSPP

0335	Thread
K3M3B-05	M5
K3M3B-06	1/8"
K3M3B-08	1/4"

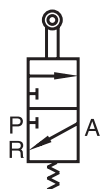
Tech Sheet 3097



### One Way Roller Lever Valve, Metric & BSPP

0335	Thread
K3M3L-05	M5
K3M3L-06	1/8"
K3M3L-08	1/4"

Tech Sheet 3097



### Roller Lever Valve, Metric & BSPP

0335	Thread
K3M3R-05	M5
K3M3R-06	1/8"
K3M3R-08	1/4"

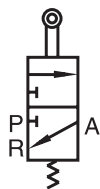
Tech Sheet 3097



### Lever/Lever, Metric & BSPP

0335	Thread
K3M3Y-05	M5
K3M3Y-06	1/8"
K3M3Y-08	1/4"

Tech Sheet 3097

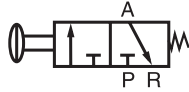


### Roller Valve, Metric & BSPP

0335	Thread
K3M3V-05	M5
K3M3V-06	1/8"
K3M3V-08	1/4"

Tech Sheet 3097

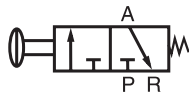
## Panel Mount Valves, Manual &amp; Mechanical 3/2 Way Valves

**Medium:** Clean compressed air. Filtered (40µm)**Material:** Valve body aluminium alloy**Seals:** Nitrile**Working Temperature:**  
-20°C to +70°C**Maximum Working Pressure:**  
10 bar

## Push Button (Shrouded), Metric &amp; BSPP

0335	Thread	Colour
K3M3PF-05-B	M5	Black
K3M3PF-05-G	M5	Green
K3M3PF-05-R	M5	Red
K3M3PF-06-B	1/8"	Black
K3M3PF-06-G	1/8"	Green
K3M3PF-06-R	1/8"	Red
K3M3PF-08-B	1/4"	Black
K3M3PF-08-G	1/4"	Green
K3M3PF-08-R	1/4"	Red

Tech Sheet 3097



## Push Button (External), Metric &amp; BSPP

0335	Thread	Colour
K3M3PP-05-B	M5	Black
K3M3PP-05-G	M5	Green
K3M3PP-05-R	M5	Red
K3M3PP-06-B	1/8"	Black
K3M3PP-06-G	1/8"	Green
K3M3PP-06-R	1/8"	Red
K3M3PP-08-B	1/4"	Black
K3M3PP-08-G	1/4"	Green
K3M3PP-08-R	1/4"	Red

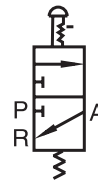
Tech Sheet 3097



## Palm Button, Metric &amp; BSPP

0335	Thread	Colour
K3M3PM-05-B	M5	Black
K3M3PM-05-G	M5	Green
K3M3PM-05-R	M5	Red
K3M3PM-06-B	1/8"	Black
K3M3PM-06-G	1/8"	Green
K3M3PM-06-R	1/8"	Red
K3M3PM-08-B	1/4"	Black
K3M3PM-08-G	1/4"	Green
K3M3PM-08-R	1/4"	Red

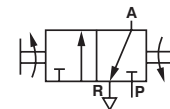
Tech Sheet 3097



## Palm Button, Latching, Metric &amp; BSPP

0335	Thread	Colour
K3M3PL-05-R	M5	Red
K3M3PL-06-R	1/8"	Red
K3M3PL-08-R	1/4"	Red

Tech Sheet 3097



## 2 Position Selector Switch, Metric &amp; BSPP

0335	Thread
K3M3HS05	M5
K3M3HS06	1/8"
K3M3HS08	1/4"

Tech Sheet 3097

## Manual 3/2 Way Valves

**Medium:** Clean compressed air. Filtered (40µm) and lubricated  
**Material:** Aluminium alloy  
**Seals:** Nitrile

**Working Temperature:**  
 -20°C to +70°C

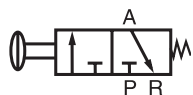
**Maximum Working Pressure:**  
 8 bar



### Push/Pull, BSPP

0335	Thread
CKL110-06	1/8"
CKL210-08	1/4"
CKL310-10	3/8"

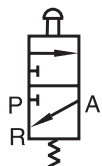
Tech Sheet 3032



### Push Button (Shrouded), 1/8" BSPP

0335	Colour
KSCPF-06-B	Black
KSCPF-06-G	Green
KSCPF-06-R	Red

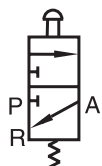
Tech Sheet 3038



### Push Button (External), 1/8" BSPP

0335	Colour
KSCPP-06-B	Black
KSCPP-06-G	Green
KSCPP-06-R	Red

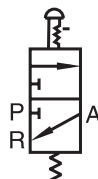
Tech Sheet 3038



### Palm Button, 1/8" BSPP

0335	Colour
KSCPM-06-B	Black
KSCPM-06-G	Green
KSCPM-06-R	Red

Tech Sheet 3038



### Palm Button, Latching, 1/8" BSPP

0335	Colour
KSCPL-06-R	Red

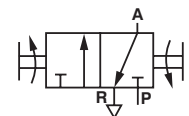
Tech Sheet 3038



### Lever/Lever, 1/8" BSPP

0335	Colour
KSY-06	

Tech Sheet 3038



### Switch, 1/8" BSPP

0335	Colour
KSCHS-06-B	Black
KSCHS-06-G	Green
KSCHS-06-R	Red

Tech Sheet 3038





° Working Temperature:  
-20°C to +70°C

## Mechanical 3/2 Way Valves

Maximum Working Pressure:  
8 bar

### One Way Roller Lever, 1/8" BSPP

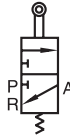
**0335**  
**KSCL-06**  
Tech Sheet 3038



Maximum Working Pressure:  
8 bar

### Roller, 1/8" BSPP

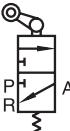
**0335**  
**KSCV-06**  
Tech Sheet 3038



Maximum Working Pressure:  
8 bar

### Roller Lever, 1/8" BSPP

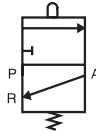
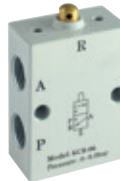
**0335**  
**KSCR-06**  
Tech Sheet 3038



Maximum Working Pressure:  
8 bar

### Plunger, 1/8" BSPP

**0335**  
**KCB-06**  
Tech Sheet 3038



Maximum Working Pressure:  
10 bar

### Roller/Spring, 1/8" BSPP

**0335**  
**ZMCR-06-W**  
Tech Sheet 10061



Maximum Working Pressure:  
10 bar

### Adjustable Roller/Spring, 1/8" BSPP

**0335**  
**ZMCJ-06-W**  
Tech Sheet 10061



Maximum Working Pressure:  
10 bar



### Antenna/Spring, 1/8" BSPP

**0335**  
**ZMCP-06-W**  
Tech Sheet 10061



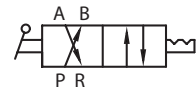
## Manual 4/2 Way Valves

Maximum Working Pressure:  
10 bar

### Lever/Lever, BSPP

0335	Thread
DKHV210-06-S	1/8"
DKHV310-08-S	1/4"
DKHV310-10-S	3/8"
DKHV410-15-S	1/2"
DKHV410-20-S	3/4"

Tech Sheet 3033



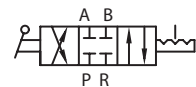
## Manual 4/3 Way Valves

Maximum Working Pressure:  
10 bar

### Lever/Lever/Lever (Fully Sealed Mid Position), BSPP

0335	Thread
DKHV230-C-06-S	1/8"
DKHV330-C-08-S	1/4"
DKHV330-C-10-S	3/8"
DKHV430-C-15-S	1/2"
DKHV430-C-20-S	3/4"

Tech Sheet 3033



° Working Temperature:  
-20°C to +70°C



## Manual 5/2 Way Valves

Maximum Working Pressure:  
8 bar



### Push/Pull, BSPP

0335	Thread
DKL110-06	1/8"
DKL210-08	1/4"
DKL310-10	3/8"

Tech Sheet 3034



Maximum Working Pressure:  
8 bar



### Lever/Lever, BSPP

0335	Thread
DKH210-06	1/8"
DKH310-08	1/4"
DKH310-10	3/8"

Tech Sheet 3041



## Manual 5/3 Way Valves

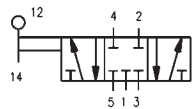
Maximum Working Pressure:  
8 bar



### Lever/Lever/Lever, Fully Sealed Mid Position, BSPP

0335	Thread
DKH230-C-06	1/8"
DKH230-C-08	1/4"
DKH330-C-10	3/8"

Tech Sheet 3045



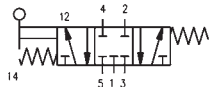
Maximum Working Pressure:  
8 bar



### Lever/Spring/Lever, Fully Sealed Mid Position, BSPP

0335	Thread
DKHA230-C-06	1/8"
DKHA230-C-08	1/4"
DKHA330-C-10	3/8"

Tech Sheet 3046



## Manual 5/2 Way Foot Valves

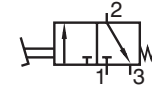
Maximum Working Pressure:  
8 bar



### Foot/Spring, 1/4" BSPP

0335	Description
DKF210-08	-
DKF210-08G	Guarded

Tech Sheet 3055



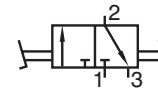
Maximum Working Pressure:  
8 bar



### Foot/Foot, 1/4" BSPP

0335	Description
DKF210-08L	-
DKF210-08LG	Guarded

Tech Sheet 3055



## Flow Control Valves

Maximum Working Pressure:  
0.5 to 10 bar



### Uni-directional, BSPP

0335	Thread
K100-06	1/8"
K200-08	1/4"
K300-10	3/8"
K300-15	1/2"

Tech Sheet 3056



## 3/2 Hand Slide Valves

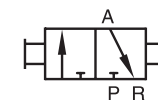
Maximum Working Pressure:  
10 bar



### Hand Slide Valves, BSPP

0335	Thread
KSV-06	1/8"
KSV-08	1/4"
KSV-10	3/8"
KSV-15	1/2"
KSV-20	3/4"
KSV-25	1"

Tech Sheet 3035



# MECHANICAL VALVES, MINIATURE

## Technical Data

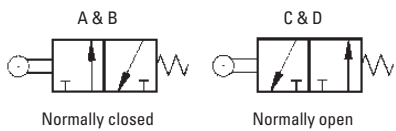
- Valve fitting port: push-in fitting for pip diameter, 4mm tube or M5 thread
- Fluid: filtered air without lubrication. Lubrication, if used, must be continuous
- Type: with poppet
- Nominal diameter: 2.5mm
- Conductance C: 16.5 NI/min – bar
- Critical ratio b: 0.003 bar/bar
- Flow rate at 6 bar P 0.5 bar: 35 NI/min
- Flow rate at 6 bar P 1 bar: 60 NI/min
- Actuation force, plunger at 6 bar: 8N

- Recommended lubricant: ISO and UNI FD22
- Installation: in any position

**Operating Temperature Range:**  
10°C to +60°C

**Operating Pressure:**  
0.5-10 bar

## 'VME' Roller Valve



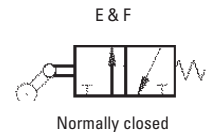
### 4mm Push-in Fittings

9149	Description	Figure
W3501000200	3/2 Way, Normally Closed, Bottom Ported	A
W3501001201	3/2 Way, Normally Closed, Side Ported	B
W3501000201	3/2 Way, Normally Open, Bottom Ported	C
W3501001200	3/2 Way, Normally Open, Side Ported	D

### M5 Thread

9149	Description	Figure
W3501000211	3/2 Way, Normally Closed, Bottom Ported	A
W3501001211	3/2 Way, Normally Closed, Side Ported	B
W3501000210	3/2 Way, Normally Open, Bottom Ported	C
W3501001210	3/2 Way, Normally Open, Side Ported	D

## 'VME' One Way Roller Valve



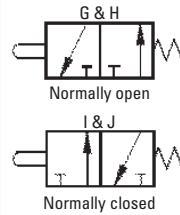
### 4mm Push-in Fittings

9149	Description	Figure
W3501000300	3/2 Way, Normally Closed, Bottom Ported	E
W3501001301	3/2 Way, Normally Closed, Side Ported	F

### M5 Thread

9149	Description	Figure
W3501000311	3/2 Way, Normally Closed, Bottom Ported	E
W3501001311	3/2 Way, Normally Closed, Side Ported	F

## 'VME' Plunger Valve



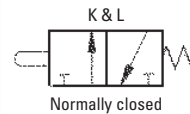
### 4mm Push-in Fittings

9149	Description	Figure
W3501000101	3/2 Way, Normally Open, Bottom Ported	G
W3501001100	3/2 Way, Normally Open, Side Ported	H
W3501000100	3/2 Way, Normally Closed, Bottom Ported	I
W3501001101	3/2 Way, Normally Closed, Side Ported	J

### M5 Thread

9149	Description	Figure
W3501000110	3/2 Way, Normally Open, Bottom Ported	G
W3501001110	3/2 Way, Normally Open, Side Ported	H
W3501000111	3/2 Way, Normally Closed, Bottom Ported	I
W3501001111	3/2 Way, Normally Closed, Side Ported	J

## 'VME' Panel Mounted Plunger Valve



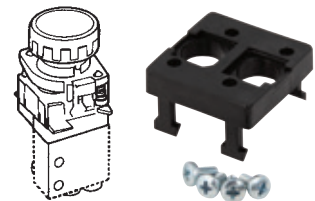
### 4mm Push-in Fittings

9149	Description	Figure
W3501000400	3/2 Way, Normally Closed, Bottom Ported	K
W3501001401	3/2 Way, Normally Closed, Side Ported	L

### M5 Thread

9149	Description	Figure
W3501000411	3/2 Way, Normally Closed, Bottom Ported	K
W3501001411	3/2 Way, Normally Closed, Side Ported	L

## Adaptor Plate



### For 'VME' Push Button

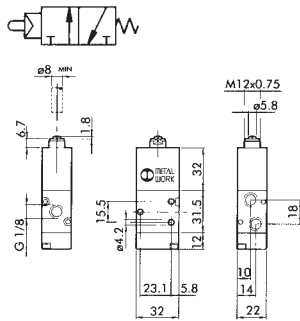
9149	Description
0351000050	For Plunger Valves





# MECHANICAL VALVES

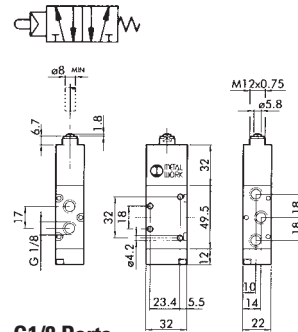
## 3/2 Sensitive Plunger Valve



### G1/8 Ports

9149	Description
7001000200	3/2 G1/8" Normally Closed

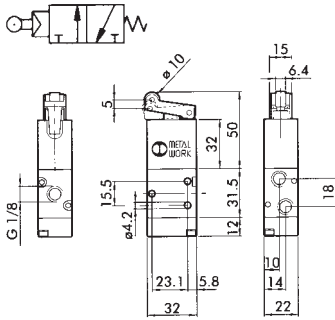
## 5/2 Sensitive Plunger Valve



### G1/8 Ports

9149	Description
7001000210	5/2 G1/8"

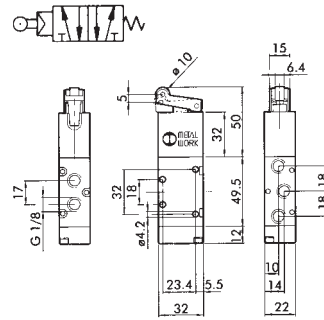
## 3/2 Sensitive Roller Lever Valve



### G1/8 Ports

9149	Description
7001000400	3/2 G1/8" Normally Closed

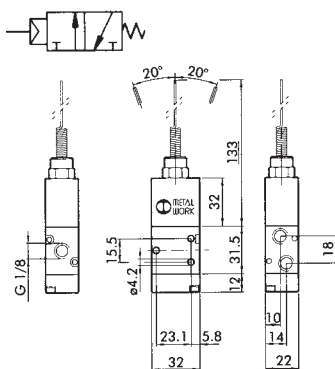
## 5/2 Sensitive Roller Lever Valve



### G1/8 Ports

9149	Description
7001000410	5/2 G1/8"

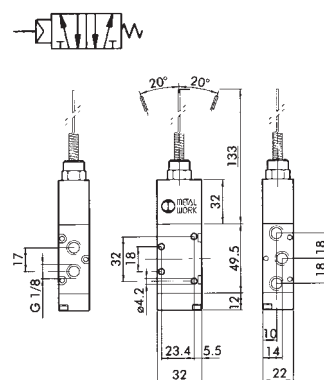
## 3/2 Sensitive Aerial Valve



### G1/8 Ports

9149	Description
7001000700	3/2 G1/8" Normally Closed

## 5/2 Sensitive Aerial Valve



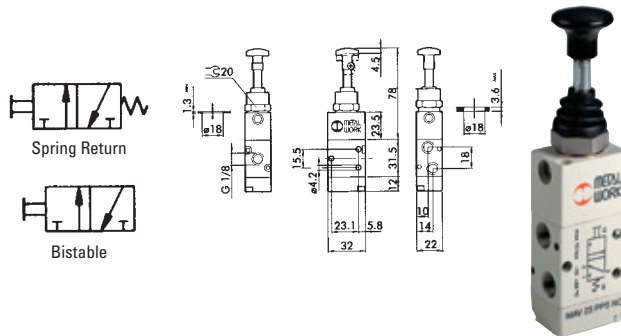
### G1/8 Ports

9149	Description
7001000710	5/2 G1/8"



# HAND VALVES

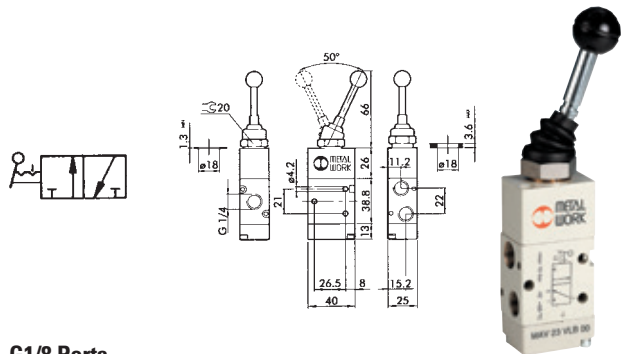
## 3/2 Push/Pull Valve



### G1/8 Ports

9149	Description
7010001200	3/2 NC Spring Return, G1/8"
7010001300	3/2 NC Bistable, G1/8"

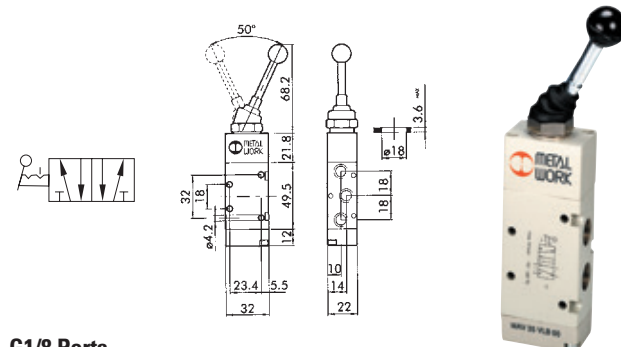
## 3/2 Top Lever Valve



### G1/8 Ports

9149	Description
7010001400	3/2 Bistable, G1/8"

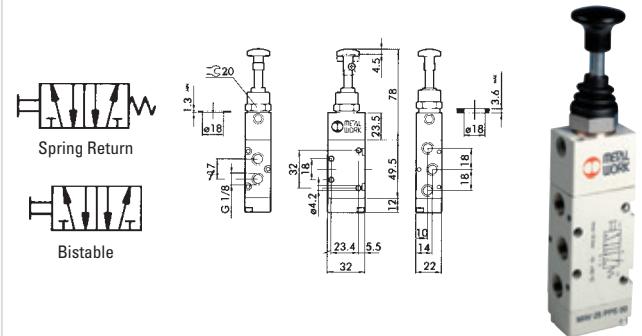
## 5/2 Top Lever Valve



### G1/8 Ports

9149	Description
7010001700	5/2 Bistable, G1/8"

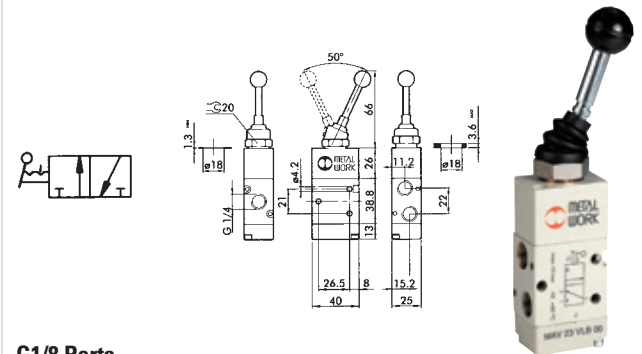
## 5/2 Push/Pull Valve



### G1/8 Ports

9149	Description
7010001500	5/2 Spring Return, G1/8"
7010001600	5/2 Bistable, G1/8"

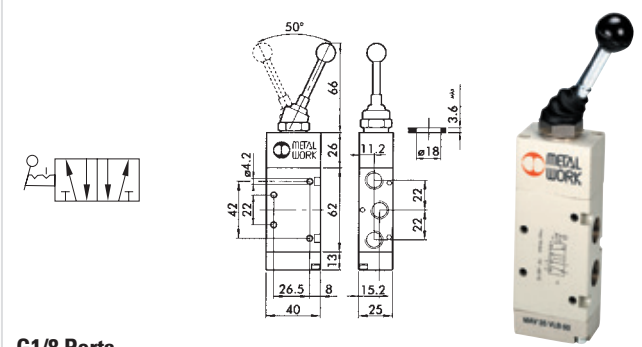
## 3/2 Top Lever Valve



### G1/8 Ports

9149	Description
7020001400	3/2 Bistable, G1/4"

## 5/2 Top Lever Valve

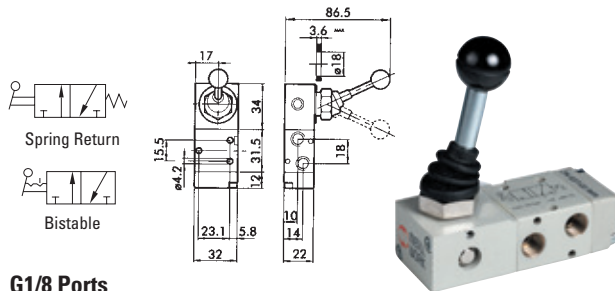


### G1/8 Ports

9149	Description
7020001700	5/2 Bistable, G1/4"

# HAND VALVES

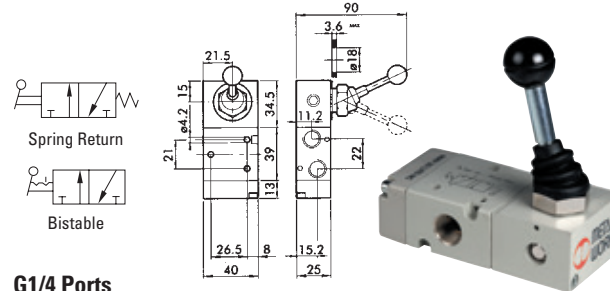
## 3/2 Lever Valve, 90°



### G1/8 Ports

9149	Description
7010000100	3/2 NC Spring Return, G1/8"
7010000200	3/2 Bistable, G1/8"

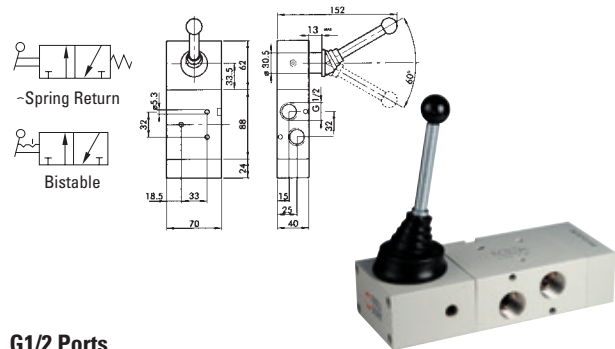
## 3/2 Lever Valve, 90°



### G1/4 Ports

9149	Description
7020000100	3/2 NC Spring Return, G1/4"
7020000200	3/2 Bistable, G1/4"

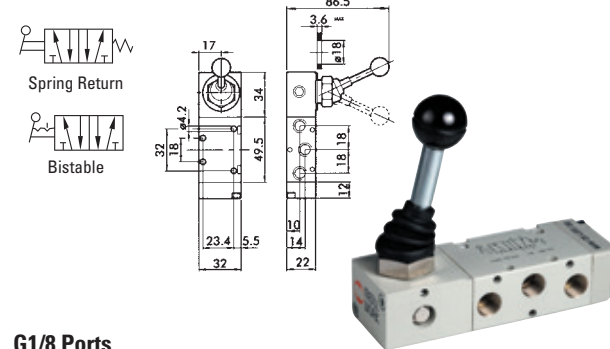
## 3/2 Lever Valve, 90°



### G1/2 Ports

9149	Description
7030000100	3/2 NC Spring Return, G1/2"
7030000200	3/2 Bistable, G1/2"

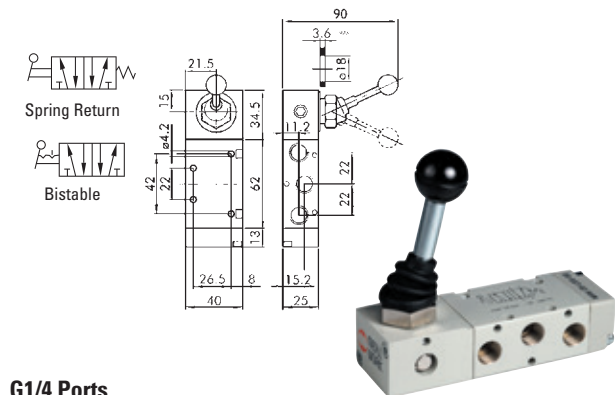
## 5/2 Lever Valve, 90°



### G1/8 Ports

9149	Description
7010000300	5/2 Spring Return, G1/8"
7010000400	5/2 Bistable, G1/8"

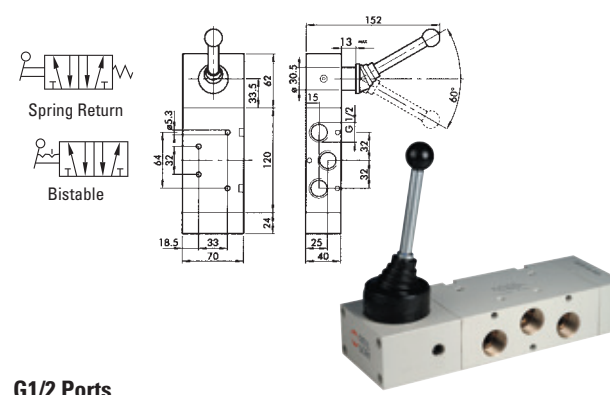
## 5/2 Lever Valve, 90°



### G1/4 Ports

9149	Description
7020000300	5/2 Spring Return, G1/4"
7020000400	5/2 Bistable, G1/4"

## 5/2 Lever Valve, 90°



### G1/2 Ports

9149	Description
7030000300	5/2 Spring Return, G1/2"
7030000400	5/2 Bistable, G1/2"



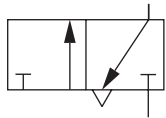


## M/1553 In-line

- Extremely compact
- Extensive range of electrical style operating heads
- Very light operating forces
- Particularly suitable for control panels

**Working Temperature:**  
-20°C to +80°C

**Working Pressure:**  
-0,9 to 10 bar



**Medium:**  
Compressed air, filtered, lubricated and non-lubricate

**Panel Mounting:**  
Hole size Ø 22 mm thickness 5 mm

**Flow:** 59 L/min

**Body:** Plastic

**Roller Operator:** Plastic

**Plunger:** Brass

**Seals:** Nitrile



### Mechanical

0036	Thread	Function	Actuation
M/1553/14	M5	3/2	Plunger/Spring
M/1553/8	M5	3/2	Roller/Spring

Tech Sheet 10530

## T-Lockouts

- Fully isolates supply pressure
- Lockable
- Rapid exhaust
- Ideal for isolating supply lines during maintenance and servicing
- High flo



## CR14, BSPP

0036	BSPP Thread
CR143B	3/8"
CR143C	1/2"
CR144A	3/4" (1" body)

Tech Sheet 20742

## Two-Hand Control Unit

**Working Temperature:**  
+5°C to +40°C

**Working Pressure:**  
3 to 8 bar



## XSHC04

0036
XSHC04

Tech Sheet 1346

## S/666, S/667 In-line

- Poppet design – high flow with compact size
- Extensive range of mechanical and manual operators
- Long established design – proven reliability
- Normally open and normally closed models

**Working Temperature:**  
-20°C to +80°C

**Working Pressure:**  
2-10 bar

**Medium:**  
Compressed air, filtered lubricated and non-lubricated

**Panel Mounting:**  
Hole size Ø 29 mm  
(Ø 16 mm lever valves)

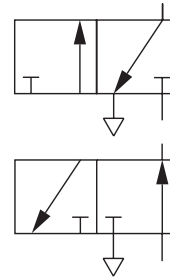
Thickness 9,5 mm  
(4 mm lever valves)

**Flow:**  
N/C: 197 L/min  
N/O: 177 L/min

**Body:**  
Die-cast zinc alloy

**Piston:** Plastic

**Seals:** Nitrile



### Mechanical

0036	Thread	Function	Actuation
S/666/14	G1/8	3/2 N/C	Plunger/Spring
S/667/14	G1/8	3/2 N/O	Plunger/Spring
S/666/8	G1/8	3/2 N/C	Roller/Spring
S/667/8	G1/8	3/2 N/O	Roller/Spring
S/666/108	G1/8	3/2 N/C	Variable Roller/Spring

Tech Sheet 10531

### Manual

0036	Thread	Function	Actuation	Colour
S/666/1	G1/8	3/2 N/C	Button/Spring	-
PS/666/1/R	G1/8	3/2 N/C	Button (Panel Mounting)/Spring	Red
PS/666/1/G	G1/8	3/2 N/C	Button (Panel Mounting)/Spring	Green
PS/666/1/N	G1/8	3/2 N/C	Button (Panel Mounting)/Spring	Black
S/666/6	G1/8	3/2 N/C	Lever/Spring (Panel Mounting)	-
S/666/7	G1/8	3/2 N/C	Lever/Lever (Panel Mounting)	-
S/666/117	G1/8	3/2 N/C	Lever (Long)/Lever (Panel Mounting)	-

Tech Sheet 10531

# SUPER X ACTUATED IN-LINE



## Mechanically & Manually

- Wide range of operators
- Suitable for multi-directional flow and dual supply applications
- High flow capacity
- Lightweight corrosion resistant materials

**Medium:**  
Compressed air, filtered, lubricated and non-lubricated

**Flow: Size L/min**  
G1/8 335  
G1/4 965

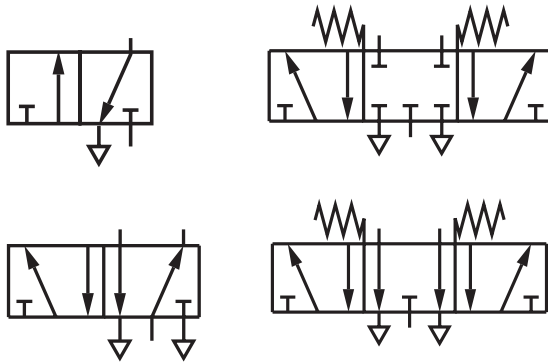
**Body:**  
Die-cast aluminium alloy

**End Cover:**  
Aluminium or glass filled nylon

**Seals:**  
Nitrile rubber

**Working Temperature:**  
0°C to +70°C

**Maximum Working Pressure:**  
10 bar



## Manual

0036	Thread	Function	Actuation	Colour
03040402	G1/8	3/2	Button/Spring	Black
03040502	G1/8	3/2	Button/Spring	Green
03040602	G1/8	3/2	Button/Spring	Red
03036602	G1/8	3/2	Button Palm/Spring	Red
03036702	G1/8	3/2	Button Palm/Spring	Green
03036802	G1/8	3/2	Button Palm/Spring	Black
03041402	G1/8	3/2	Button (Shrouded)/Spring	Black
03041502	G1/8	3/2	Button (Shrouded)/Spring	Green
03041602	G1/8	3/2	Button (Shrouded)/Spring	Red
03040802	G1/8	3/2	Button/Pilot	Black
03043802	G1/8	3/2	Lever/Spring	Black
03042602	G1/8	3/2	Lever Knob/Spring	Black
03043702	G1/8	3/2	Lever/Lever	Black
03040302	G1/8	3/2	Toggle/Toggle	Black
03042502	G1/8	3/2	Knob/Knob	Black
X3045502	G1/8	5/2	Button (Shrouded)/Spring	Green
X3044802	G1/8	5/2	Button/Pilot	Black
X3046502	G1/8	5/2	Knob, Push/Knob, Pull	Black
X3047802	G1/8	5/2	Lever/Spring	Black
X3044302	G1/8	5/2	Toggle/Toggle	Black
X3047702	G1/8	5/2	Lever/Lever	Black
X3046402	G1/8	5/2	Knob/Knob or Pilot	Black
X3048202	G1/8	5/2	Pedal/Spring	Black
X3048402	G1/8	5/2	Pedal/Pedal	Black
X3343802	G1/8	5/3	Lever/Spring/Lever	Black
X3347802	G1/8	5/3	Level/Spring/Lever	Black
X3343702	G1/8	5/3	Lever/Lever/Lever	Black
03060402	G1/4	3/2	Button/Spring	Black
03063802	G1/4	3/2	Lever/Spring	Black
03063702	G1/4	3/2	Lever/Lever	Black
03062502	G1/4	3/2	Knob/Knob	Black
X3064402	G1/4	5/2	Button/Spring	Black
X3067802	G1/4	5/2	Lever/Spring	Black
X3067702	G1/4	5/2	Lever/Lever	Black
X3066502	G1/4	5/2	Knob/Knob	Black
X3068202	G1/4	5/2	Pedal/Spring	Black
X3068402	G1/4	5/2	Pedal/Pedal	Black
X3363802	G1/4	5/3	Lever/Spring/Lever	Black
X3367802	G1/4	5/3	Lever/Spring/Lever	Black
X3363702	G1/4	5/3	Lever/Lever/Lever	Black

## Mechanical

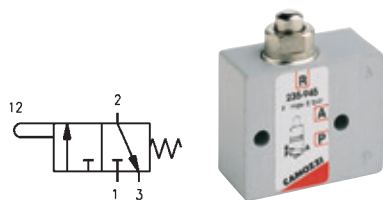
0036	Thread	Function	Actuation
03040002	G1/8	3/2	Plunger/Spring
03040202	G1/8	3/2	Roller/Spring
03029302	G1/8	3/2	Roller Lever (Heavy-duty)/Spring
03029402	G1/8	3/2	One Way Trip (Heavy-duty)/Spring
03043202	G1/8	3/2	Antenna Valve
X3044002	G1/8	5/2	Plunger/Spring
X3045102	G1/8	5/2	Roller Lever/Spring
X3039302	G1/8	5/2	Roller Lever (Heavy-duty)/Spring
X3046302	G1/8	5/2	Sensitive Roller Lever/Spring
X3047202	G1/8	5/2	Antenna/Spring
03060002	G1/4	3/2	Plunger/Spring
03060202	G1/4	3/2	Roller/Spring
03061102	G1/4	3/2	Roller Lever/Spring
X3064002	G1/4	5/2	Plunger/Spring
X3064202	G1/4	5/2	Roller/Spring
X3065102	G1/4	5/2	Roller Lever/Spring

Tech Sheet 10582

Tech Sheet 10582

# DIRECTIONAL CONTROL VALVES

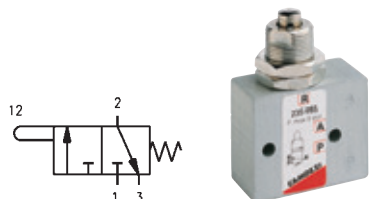
## Series 2, Mechanically Operated Mini-Valves



### 3/2 Plunger Type Valves

0158	Thread
235 945	M5
234 945	Ø4mm

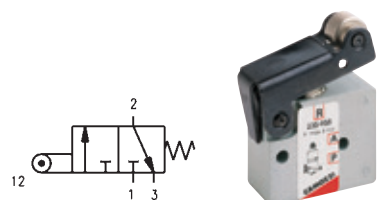
Tech Sheet 1850



### 3/2 Panel Mounted Plunger Type Valves

0158	Thread
235 985	M5
234 985	Ø4mm

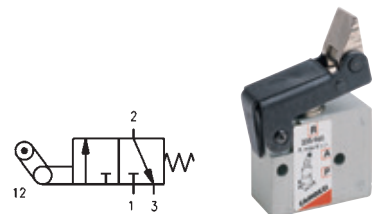
Tech Sheet 1850



### 3/2 Roller Lever Type Valves

0158	Thread
235 955	M5
234 955	Ø4mm

Tech Sheet 1850

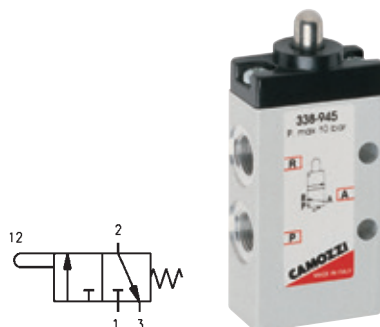


### 3/2 One Way Trip Type Valves

0158	Thread
235 965	M5
234 965	Ø4mm

Tech Sheet 1850

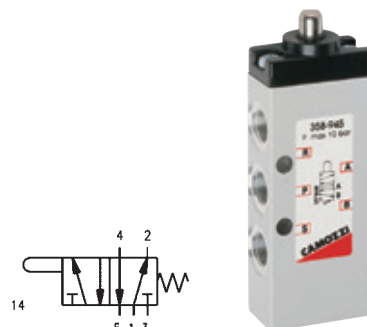
## Series 3, Mechanically Operated Valves



### G1/8\", 3/2 Plunger Type Valve

0158	Thread
338 945	G1/8"

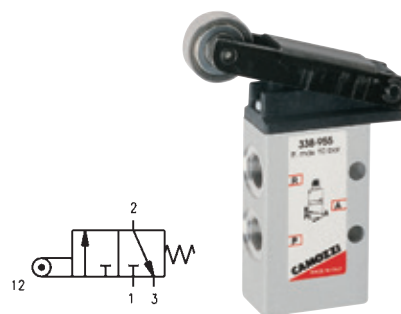
Tech Sheet 1851



### G1/8\", 5/2 Plunger Type Valve

0158	Thread
358 945	G1/8"

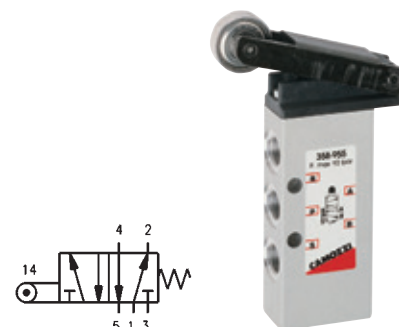
Tech Sheet 1851



### G1/8\", 3/2 Roller Lever Type Valve

0158	Thread
338 955	G1/8"

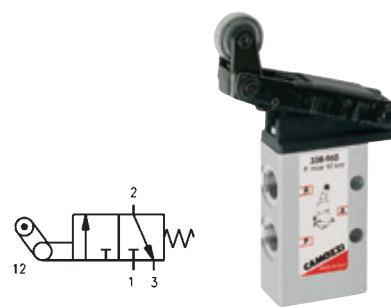
Tech Sheet 1851



### G1/8\", 5/2 Roller Lever Type Valve

0158	Thread
358 955	G1/8"

Tech Sheet 1851



### G1/8\", 3/2 Roller Lever One Way Trip Type Valve

0158	Thread
338 965	G1/8"

Tech Sheet 1851



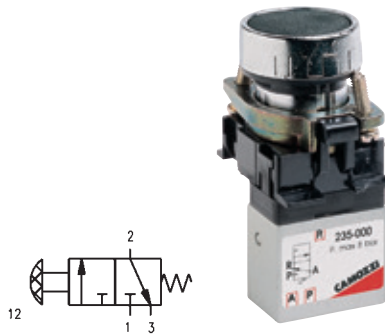
### G1/8\", 5/2 Roller Lever One Way Trip Type Valve

0158	Thread
358 965	G1/8"

Tech Sheet 1851

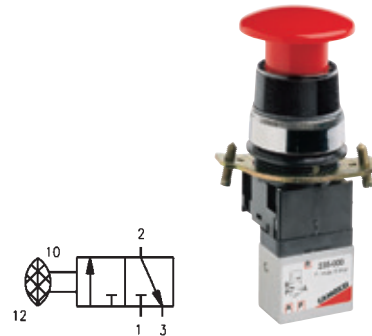
# DIRECTIONAL CONTROL VALVES

## Series 2, Manually Operated Console Mini-Valves



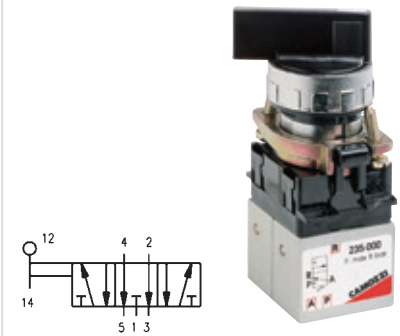
### 3/2 Push Button Spring Return Valves

0158	Thread
235 895	M5
234 895	Ø4mm
Tech Sheet 1852	



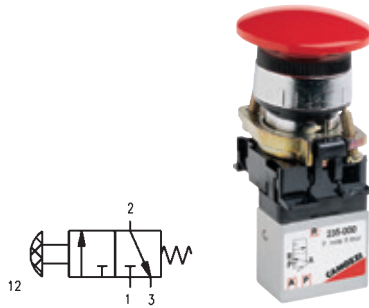
### 3/2 Stable Palm Switch

0158	Thread
235 970	M5
234 970	Ø4mm
Tech Sheet 1852	



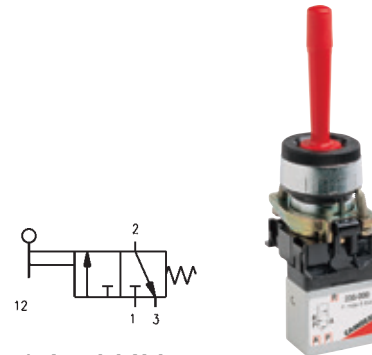
### 5/3 3 Position Selector Switch

0158	Thread
285 870	M5
284 870	Ø4mm
Tech Sheet 1852	



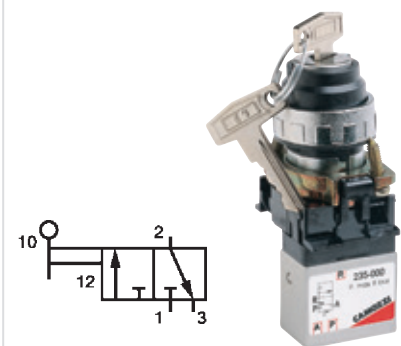
### 3/2 Palm Switch Spring Return Valves

0158	Thread
235 975	M5
234 975	Ø4mm
Tech Sheet 1852	



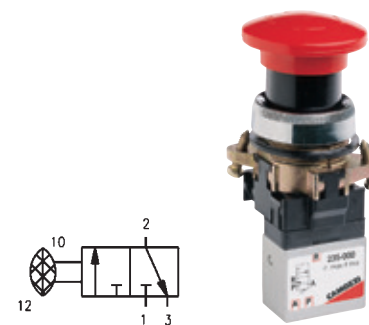
### 3/2 Joystick Valve

0158	Thread
235 905	M5
234 905	Ø4mm
Tech Sheet 1852	



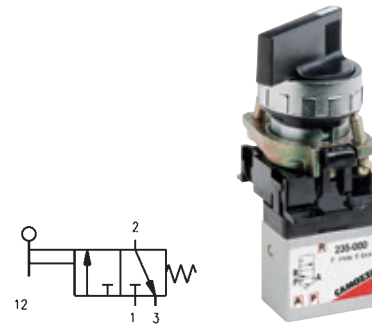
### 3/2 3 Key Switch

0158	Thread
235 904	M5
234 904	Ø4mm
Tech Sheet 1852	



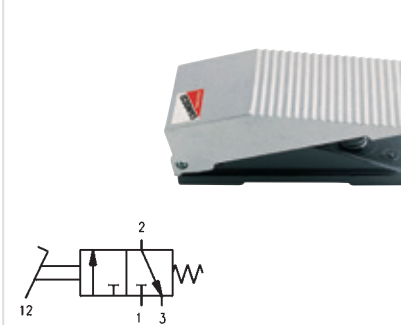
### 3/2 Twist Lock Palm Switch

0158	Thread
235 972	M5
234 972	Ø4mm
Tech Sheet 1852	



### 3/2 2 Position Selector Switch

0158	Thread
235 990	M5
234 990	Ø4mm
Tech Sheet 1852	



### 3/2 Foot Operated Valves

0158	Thread
235 925	M5
234 925	Ø4mm
Tech Sheet 1852	

# DIRECTIONAL CONTROL VALVES

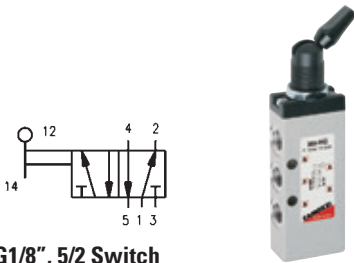
## Series 3, 4 & VMS Manually Operated Valves



**G1/8", 3/2 NC Switch**

0158	Thread
338 990	G1/8"

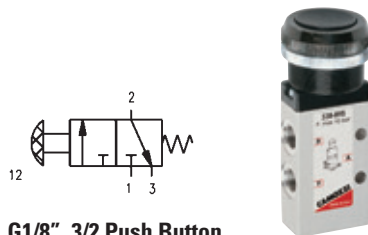
Tech Sheet 10309



**G1/8", 5/2 Switch**

0158	Thread
358 990	G1/8"

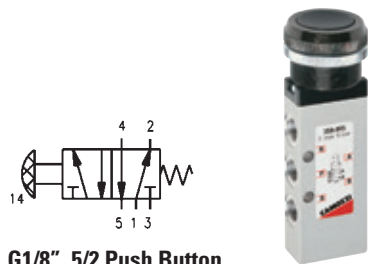
Tech Sheet 10309



**G1/8", 3/2 Push Button**

0158	Thread	Colour
338 895	G1/8"	Black
338 896	G1/8"	Green
338 897	G1/8"	Red

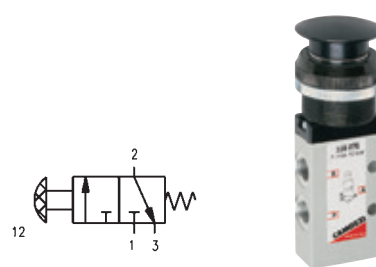
Tech Sheet 10309



**G1/8", 5/2 Push Button**

0158	Thread	Colour
358 895	G1/8"	Black
358 896	G1/8"	Green
358 897	G1/8"	Red

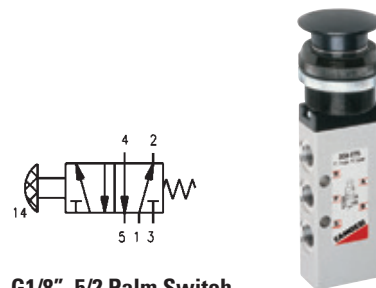
Tech Sheet 10309



**G1/8", 3/2 Palm Switch**

0158	Thread	Colour
338 975	G1/8"	Black
338 976	G1/8"	Green
338 977	G1/8"	Red

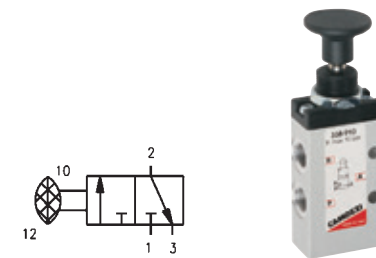
Tech Sheet 10309



**G1/8", 5/2 Palm Switch**

0158	Thread	Colour
358 975	G1/8"	Black
358 976	G1/8"	Green
358 977	G1/8"	Red

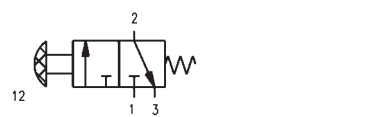
Tech Sheet 10309



**G1/8", 3/2 Push/Pull Knob Bistable**

0158	Thread
338 910	G1/8"

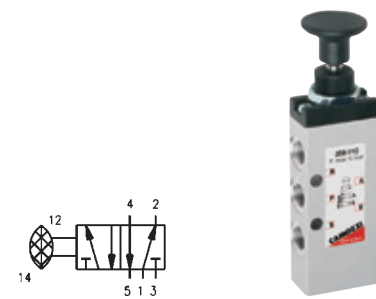
Tech Sheet 10309



**G1/8", 3/2 Push Knob Monostable**

0158	Thread
338 915	G1/8"

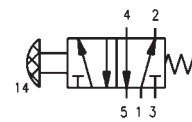
Tech Sheet 10309



**G1/8", 5/2 Push/Pull Knob Bistable**

0158	Thread
358 910	G1/8"

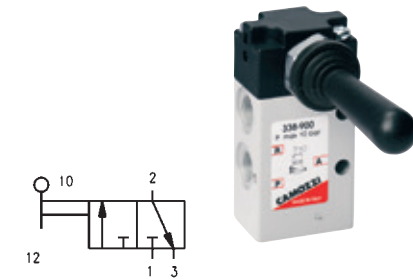
Tech Sheet 10309



**G1/8", 5/2 Push Knob Monostable**

0158	Thread
358 915	G1/8"

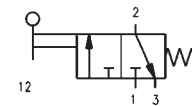
Tech Sheet 10309



**G1/8", 3/2 Lever Valve Bistable**

0158	Thread
338 900	G1/8"

Tech Sheet 10309



**G1/8", 3/2 Lever Valve Monostable**

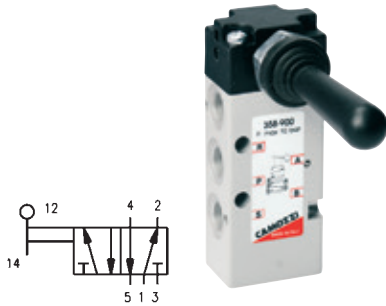
0158	Thread
338 905	G1/8"

Tech Sheet 10309



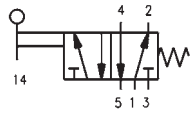
# DIRECTIONAL CONTROL VALVES

## Series 3, 4 & VMS Manually Operated Valves



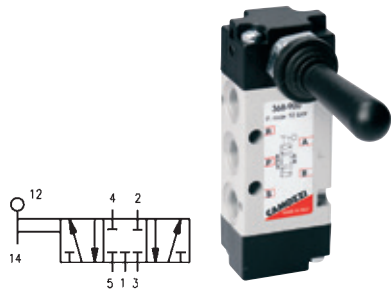
**G1/8", 5/2 Lever Valve Bistable**

0158	Thread
<b>358 900</b>	G1/8"
Tech Sheet 10309	



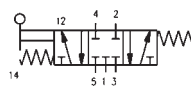
**G1/8", 5/2 Lever Valve Monostable**

0158	Thread
<b>358 905</b>	G1/8"
Tech Sheet 10309	



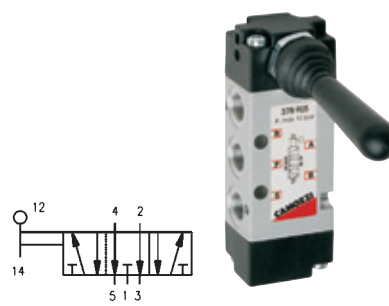
**G1/8", 5/3 CC Lever Valve Bistable**

0158	Thread
<b>368 900</b>	G1/8"
Tech Sheet 10309	



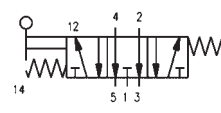
**G1/8", 5/3 CC Lever Valve Monostable**

0158	Thread
<b>368 905</b>	G1/8"
Tech Sheet 10309	



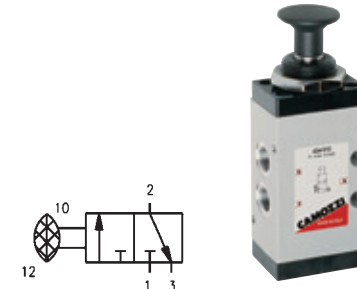
**G1/8", 5/3 CO Lever Valve Bistable**

0158	Thread
<b>378 900</b>	G1/8"
Tech Sheet 10309	



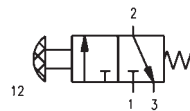
**G1/8", 5/3 CO Lever Valve Monostable**

0158	Thread
<b>378 905</b>	G1/8"
Tech Sheet 10309	



**G1/4", 3/2 Push/Pull Knob Bistable**

0158	Thread
<b>434 910</b>	G1/4"
Tech Sheet 10309	



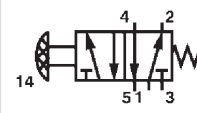
**G1/4", 3/2 Push Knob Monostable**

0158	Thread
<b>434 915</b>	G1/4"
Tech Sheet 10309	



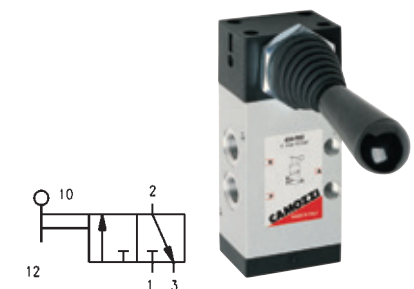
**G1/4", 5/2 Push/Pull Knob Bistable**

0158	Thread
<b>454 910</b>	G1/4"
Tech Sheet 10309	



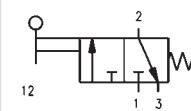
**G1/4", 5/2 Push Knob Monostable**

0158	Thread
<b>454 915</b>	G1/4"
Tech Sheet 10309	



**G1/4", 3/2 Lever Bistable**

0158	Thread
<b>434 900</b>	G1/4"
Tech Sheet 10309	

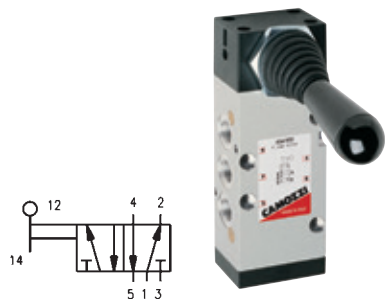


**G1/4", 3/2 Lever Monostable**

0158	Thread
<b>434 905</b>	G1/4"
Tech Sheet 10309	

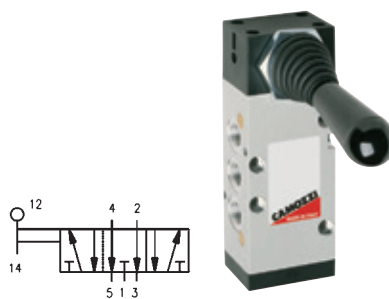
# DIRECTIONAL CONTROL VALVES

## Series 3, 4 & VMS Manually Operated Valves



### G1/4\", 5/2 Lever Valve Bistable

0158	Thread
454 900	G1/4"
Tech Sheet 10309	



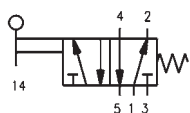
### G1/4\", 5/3 CO Lever Valve Bistable

0158	Thread
474 900	G1/4"
Tech Sheet 10309	



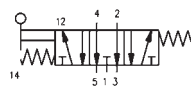
### Slide Valves

0158	Thread
VMS 105 M5	M5
VMS 118 1/8	1/8"
VMS 114 1/4	1/4"
VMS 138 3/8	3/8"
VMS 112 1/2	1/2"
VMS 134 3/4	3/4"
Tech Sheet 10309	



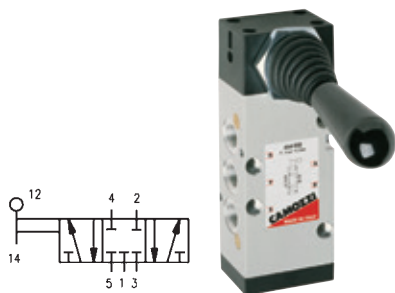
### G1/4\", 5/2 Lever Valve Monostable

0158	Thread
454 905	G1/4"
Tech Sheet 10309	



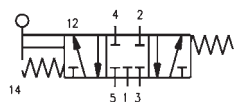
### G1/4\", 5/3 CO Lever Valve Monostable

0158	Thread
474 905	G1/4"
Tech Sheet 10309	



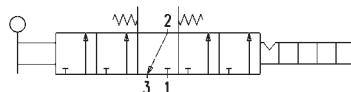
### G1/4\", 5/3 CC Lever Valve Bistable

0158	Thread
464 900	G1/4"
Tech Sheet 10309	



### G1/4\", 5/3 CC Lever Valve Monostable

0158	Thread
464 905	G1/4"
Tech Sheet 10309	



### G1/8\", 3/2 Joystick Lever Valve

0158	Thread
234 9054	G1/8"
Tech Sheet 10309	

# PNEUMATIC VALVES & ACCESSORIES

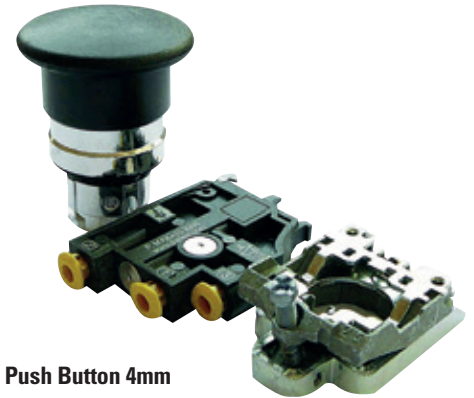


## Parker Mechanical Valves



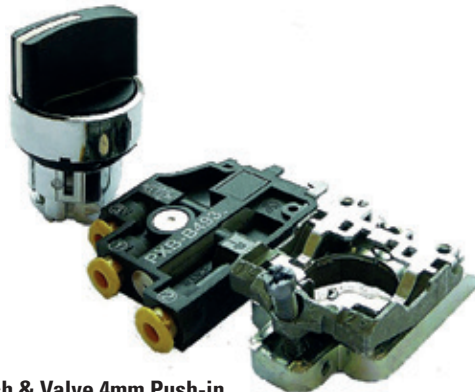
**Push Button & Valve Spring Return 4mm Push-in**

0678	Flow l/min	Description
<b>PXB-B4131BA2</b>	240	Black with 1 NC Valve



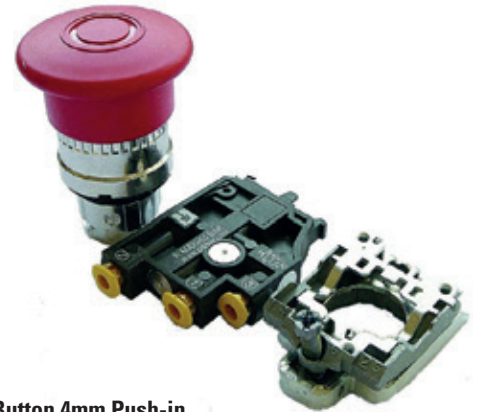
**Mushroom Head Push Button 4mm Push-in**

0678	Flow l/min	Description
<b>PXB-B4131BC2</b>	240	Black - Spring Return - with 1 NC Valve



**Selector Switch & Valve 4mm Push-in**

0678	Flow l/min	Description
<b>PXB-B4131BD2</b>	240	Black - 2 Positions - with 1 NC Valve



**Latching Push Button 4mm Push-in**

0678	Flow l/min	Description
<b>PXB-B4131BT4</b>	240	Red - Latching - with 1 NC Valve



stainless  
steel

For **Parker Angle Seat Valves**  
see page 1051

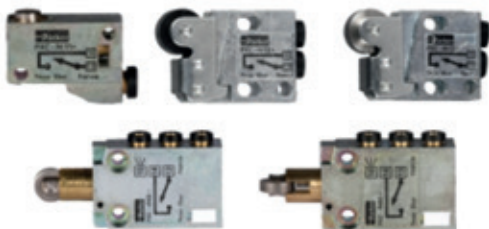


## Mechanical Valves



### Push Buttons & Valves (Separate Components)

0681	Description
PXB-B4931	Switch Valve - Flow 240 l/min NO/NC



### Micro Plunger & Roller Limit Valves 4mm

0681	Actuator	Return
PXC-M601A110	Steel Plunger	Spring Return
PXC-M121	Plastic Roller	Spring Return
PXC-M521	Plastic Roller	Spring Return



### B43 / B53 Lever Valves G1/8" - G1/4"

0681	Type	Actuator	Return	Thread BSPP
B43003ES	3-2	Palm Lever	Spring Return	1/8"
B43003LS	3-2	Lock Down Lever	Spring Return	1/8"
B43004LS	5-2	Lock Down Lever	Spring Return	1/8"
B53003LT	3-2	Lever	Lever	1/4"
B53004LT	5-2	Lever	Lever	1/4"



### B43 / B53 Valves 3/2 & 5/2 Button Operated G1/8" - G1/4"

0681	Type	Actuator	Return	Thread BSPP
B43003BXS	3-2	Button	Spring	1/8"
B43003HXS	3-2	Button	Button	1/8"
B53003HX	3-2	Button	Button	1/4"
B53004HXS	5-2	Button	Spring	1/4"
B43004HXS	5-2	Button	Button	1/8"



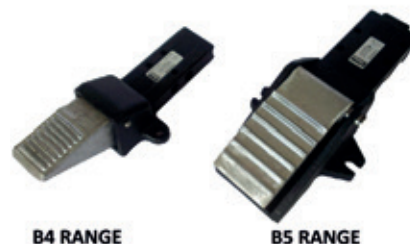
### B43/B53 3/2 Trip Valves G1/8" - G1/4"

0681	Type	Actuator	Return	Thread BSPP
B43003CS	3-2	Plunger	Spring Return	1/8"
B43003RS	3-2	Roller Lever	Spring Return	1/8"
B43003RTS	3-2	One Way Roller Trip	Spring Return	1/8"



### B53 Spool Valve Panel Mounting Kit

0681	Description
M53004L-10A	B53 Series Panel Mounting Kit



### B43 / B53 Foot Pedal 3/2 & 5/2 Valves G1/8" - G1/4"

0681	Type	Actuator	Return	Thread BSPP
B43003FS	3-2	Foot Pedal	Spring Return	1/8"
B53003FS	3-2	Foot Pedal	Spring Return	1/4"
B53004FS	3-2	Foot Pedal	Spring Return	1/4"



### Heavy-duty Lever 3/2 Poppet Valve G1/2"

0681	Actuator	Return	Thread BSPP
B203L	Lever	Lever	1/2"

# PNEUMATIC VALVES & ACCESSORIES



## Mechanical Valves



**Viking Xtreme 3/2 & 5/2 Lever Operated G1/8" G1/4" & G1/2"**

0681	Type	Actuator	Return	Thread BSPP
P2LAX511VV	5-2	Lever	Lever	1/8"
P2LAX511VS	5-2	Lever	Spring	1/8"
P2LDX514VS	5-2	Lever	Spring	1/2"



**Viking Xtreme Valve 5/3 Lever Operated G1/4" & G1/2"**

0681	Actuator	Mid Position	Return	Thread BSPP
P2L BX61222	Lever	Closed	Lever	1/4"
P2L BX61211	Lever	Closed	Spring	1/4"
P2L BX81211	Lever	Vented	Spring	1/4"

## Pilot & Solenoid Valves



**B3 Series 1/8" Valves Pilot & Solenoid**

0681	Type	Actuator	Return	Voltage (if applicable)
B345000XXH	5-2	Air	Air	N/A



For **Parker Solenoid Valves**  
see pages 1036-1038





# 3/2 PNEUMATIC VALVES

## Series 104 Miniature Manual & Mechanical, 4mm Push-in Connectors



**Handle complete with Integrated Valve, Metric 3/2 - 4mm**

0110	Function
105.32.6.40C	Normally Closed



**Tappet/Spring Return, Metric**

0110	Function
104.32.0.1.LC	Normally Closed
104.32.0.1.PA	Normally Open



**Lever Plastic Roller/Spring Return, Metric**

0110	Function
104.32.2.1.LA	Normally Open
104.32.2.1.LC	Normally Closed
104.32.2.1.PA	Normally Open



**Lever Unidirectional - Spring Return, Metric**

0110	Function
104.32.3.1.PC	Normally Closed



**Lever Metal Roller Bearing - Spring Return, Metric**

0110	Function
104.32.2.1/1.LA	Normally Closed



**Raised Push Button/Spring Return Side Connection, Metric**

0110	Colour	Function
104.32.6.23/1.LC	Red	Normally Closed
104.32.6.23/3.LC	Green	Normally Closed



**Raised Push Button/Spring Return Rear Connection, Metric**

0110	Colour	Function
104.32.6.23/3.PC	Green	Normally Closed
104.32.6.23/4.PC	Yellow	Normally Closed



**Palm Push Button Locking, Metric**

0110	Colour	Function
104.32.6.25.PA	Red	Normally Open



**Flush Push Button/Spring Return Side Connection, Metric**

0110	Colour	Function
104.32.6.22/3.LC	Green	Normally Closed

# 3/2 PNEUMATIC VALVES



## Series 104 Miniature Manual & Mechanical, 4mm Push-in Connectors



**Flush Push Button/Spring Return Rear Connection, Metric**

0110	Colour	Function
104.32.6.22/2.PC	Black	Normally Open



**2/2 Switch Short Lever, Rear Connection**

0110	Function
104.22.6.30.PC	Normally Closed



**Raised Push Button/Step/Step, Side Connection, Metric**

0110	Thread	Colour	Function
104.32.6.31.LA	Clear	Clear	Normally Open



**Switch Long Lever, Side Connection**

0110	Function
104.32.6.27.LC	Normally Closed



**Key Switch, Rear Connection**

0110	Function
104.32.6.28.PC	Normally Closed



**Switch Short Lever, Side Connection**

0110	Function
104.32.6.30.LC	Normally Closed
104.32.6.30.PC	Normally Closed



For Air Preparation  
see pages 700-702



# 3/2 PNEUMATIC VALVES

## Series Techno Manual & Mechanical



**Tappet/Spring Return, BSPP**

0110	Thread	Function
T228.32.0.1	1/8"	Normally Closed



**Lever Plastic Roller/Spring Return, BSPP**

0110	Thread	Function
T228.32.2.1	1/8"	Normally Closed



**Lever Metal Roller/Spring Return, BSPP**

0110	Thread	Function
T228.32.2.1/2	1/8"	Normally Closed



**Lever Metal Roller Bearing/Spring Return, BSPP**

0110	Thread	Function
T228.32.2.1/1	1/8"	Normally Closed



**Push Button/Spring Return, BSPP**

0110	Thread	Function
T224.32.8.1	1/4"	Normally Closed



**Palm Push Button Locking, BSPP**

0110	Thread	Function
T228.32.6.25	1/8"	Normally Closed



**Flush 30mm Push Button/Spring Return, BSPP**

0110	Thread	Colour
T228.32.6.1/2	1/8"	Black
T228.32.6.1/3	1/8"	Green



**2 Position Key Switch, BSPP**

0110	Thread
T228.32.6.28	1/8"



**2 Position Switch Short Lever**

0110	Thread	Function
T228.32.6.27	1/8"	Normally Closed



**Lateral Lever**

0110	Thread	Colour	Actuation
T228.32.9/2	1/8"	Black	Lever/Lever



**Lateral Lever**

0110	Thread	Colour	Actuation
T224.32.9.1/2	1/4"	Black	Lever/Spring
T224.32.9/2	1/4"	Black	Lever/Lever
T224.32.9/3	1/4"	Green	Lever/Lever

# 3/2 PNEUMATIC VALVES



## Series 200 Manual & Mechanical



### Tappet/Spring Return, BSPP

0110	Thread	Description	Function
228.32.0.1	1/8"	-	Normally Closed
228.32.1.1	1/8"	Panel Mount	Normally Closed



### Lever Plastic Roller/Spring Return, BSPP

0110	Thread	Function
228.32.2.1	1/8"	Normally Closed



### Lever Metal Roller/Spring Return, BSPP

0110	Thread	Function
228.32.2.1/2	1/8"	Normally Closed



### Lever Metal Roller Bearing/Spring Return, BSPP

0110	Thread	Function
228.32.2.1/1	1/8"	Normally Closed



### Lever Roller Bidirectional/Spring Return, BSPP

0110	Thread	Function
228.32.4.1	1/8"	Normally Closed



### Push Button/Spring Return, BSPP

0110	Thread	Function
228.32.8.1	1/8"	Normally Closed



### Palm Push Button Locking, BSPP

0110	Thread	Function
228.32.6.25	1/8"	Normally Closed



### Flush 30mm Push Button/Spring Return, BSPP

0110	Thread	Function
228.32.6.1/2	1/8"	Normally Closed
228.32.6.1/1	1/8"	Normally Closed
228.32.6.1/3	1/8"	Normally Closed



### Sensitive 30mm Push Button/Differential, BSPP

0110	Thread	Colour	Function
228.32.6.13/1	1/8"	Red	Normally Closed
228.32.6.13/3	1/8"	Green	Normally Closed



### 2 Position Key Switch, BSPP

0110	Thread	Function
228.32.6.28	1/8"	Normally Closed



### Switch Short Lever, BSPP

0110	Thread	Function
228.32.6.27	1/8"	



### Lever

0110	Thread	Colour	Actuation	Function
228.32.9.1/2	1/8"	Black	Spring Return	Normally Closed
228.32.9/2	1/8"	Black	Stable 2 Position	Normally Closed



### Lever, BSPP

0110	Thread	Colour	Actuation	Function
224.32.9.1/2	1/4"	Black	Spring Return	Normally Closed
224.32.9.1/1	1/4"	Red	Spring Return	Normally Closed
224.32.9.2	1/4"	Black	Stable 2 Position	Normally Closed
224.32.9.3	1/4"	Green	Stable 2 Position	Normally Closed



### Lever, BSPP

0110	Thread	Actuation
212.32.9.1	1/2"	Spring Return



### Guarded Foot Valve

0110	Thread	Actuation	Function
228.32.10.2/1	1/8"	Foot/Spring	Normally Closed
228.32.10/1	1/8"	Foot/Foot	Normally Closed

# 5/2 PNEUMATIC VALVES



## Series 104 Minature Manual & Mechanical, 4mm Push-in Connectors



**Raised Push Button Step/Step, Metric**

0110	Colour
104.52.6.31.L	Clear



**Flush Push Button/Spring Return/  
Rear Connection, Metric**

0110	Colour
104.52.6.22/2.P	Black



**Switch Short Lever/  
Side Connection, Metric**

0110
104.52.6.30.L



**Palm Push Button Locking, Metric**

0110	Colour
104.52.6.25.L	Red



**Key Switch/Side Connection, Metric**

0110
104.52.6.28.L

**Switch Short Lever/  
Rear Connection, Metric**

0110
104.52.6.30.P

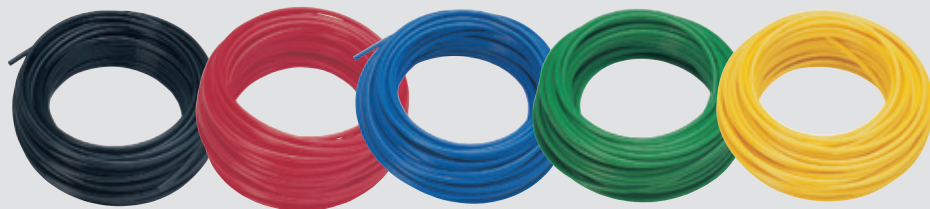


**Flush Push Button/Spring Return/  
Side Connection, Metric**

0110	Colour
104.52.6.22/1.L	Red

**Switch Long Lever/Rear  
Connection, Metric**

0110
104.52.6.27.P



For **Nylon Tube**  
see pages **913-917**



# 5/2 PNEUMATIC VALVES



## Series Techno Manual & Mechanical



**Tappet /Spring Return/Panel Mount, BSPP**

0110	Thread
T228.52.1.1	1/8"



**Lever Metal Roller/Spring Return, BSPP**

0110	Thread
T228.52.2.1/2	1/8"



**Palm Push Button Locking, BSPP**

0110	Thread
T228.52.6.25	1/8"



**Key Switch, BSPP**

0110	Thread
T228.52.6.28	1/8"



**Switch Short Lever, BSPP**

0110	Thread
T228.52.6.27	1/8"



**Front Facing Lever, BSPP**

0110	Thread	Colour
T228.52.55/2	1/8"	Black



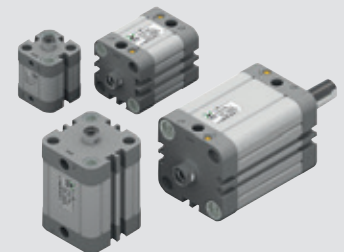
**Lateral Lever, BSPP**

0110	Thread	Colour	Function
T228.52.9.1/3	1/8"	Green	Lever/Spring
T228.52.9/2	1/8"	Black	Lever/Lever
T228.52.9/1	1/8"	Red	Lever/Lever



**Lateral Lever, BSPP**

0110	Thread	Colour	Description
T224.52.9.1/2	1/4"	Black	Lever/Spring
T224.52.9/2	1/4"	Black	Lever/Lever
T224.52.9/1	1/4"	Red	Lever/Lever
T224.52.9/3	1/4"	Green	Lever/Lever



**For Pneumax Compact Cylinders**  
see page 536

# 5/2 PNEUMATIC VALVES



## Series 200 Manual & Mechanical



**Tappet/Spring Return/Panel Mount, BSPP**

0110	Thread
228.52.1.1	1/8"



**Lever Plastic Roller/Spring Return, BSPP**

0110	Thread
228.52.2.1	1/8"



**Lever Metal Roller/Spring Return, BSPP**

0110	Thread
228.52.2.1/2	1/8"



**Lever Metal Roller Bearing/Spring Return, BSPP**

0110	Thread
228.52.2.1/1	1/8"



**Lever Roller Bidirectional/Spring Return, BSPP**

0110	Thread
228.52.4.1	1/8"



**Push Button/Spring Return, BSPP**

0110	Thread
224.52.8.1	1/4"



**Palm Push Button Locking, BSPP**

0110	Thread	Colour
228.52.6.25	1/8"	Red



**2 Position Switch, Short Lever, BSPP**

0110	Thread
228.52.6.27	1/8"



**2 Position Key Switch, BSPP**

0110	Thread
228.52.6.28	1/8"



**2 Position Front Facing Lever, BSPP**

0110	Thread	Colour
228.52.55/2	1/8"	Black
228.52.55/1	1/8"	Red
228.52.55/3	1/8"	Green



**2 Position Lever, BSPP**

0110	Thread	Colour
228.52.9/2	1/8"	Black



**Lever/Spring Return, BSPP**

0110	Thread	Colour
224.52.9.1/2	1/4"	Black
224.52.9.1/1	1/4"	Red
224.52.9.1/3	1/4"	Green



**2 Position Locking Lever, BSPP**

0110	Thread
224.52.9.2	1/4"



**2 Position Stable Lever, BSPP**

0110	Thread
212.52.9	1/2"



**Guarded Foot Valve/Spring Return, BSPP**

0110	Thread
228.52.10.1/1	1/8"
214.52.10.1/1	1/4"



**Miniaturised Foot Valve/Spring Return, BSPP**

0110	Thread
228.52.10.1P	1/8"



**Foot Valve/Spring Return, BSPP**

0110	Thread
228.52.10.1	1/8"

# 5/3 PNEUMATIC VALVES



## Eco 22 Solenoid Valves



### Lever/Stable 3 Position, BSPP

0110	Thread	Colour	Function
T228.53.31.9/2	1/8"	Black	Closed Centre
T228.53.32.9/2	1/8"	Black	Open Centre



### Lever/Spring To Centre, BSPP

0110	Thread	Colour	Description
T228.53.32.9.1/2	1/8"	Black	Open Centre
T228.53.32.9.1/1	1/8"	Red	Open Centre



### Lever/Spring To Centre, BSPP

0110	Thread	Colour	Function
T224.53.31.9.1/2	1/8"	Black	Closed Centre
T224.53.32.9.1/2	1/8"	Black	Open Centre
T224.53.31.9.1/3	1/8"	Green	Closed Centre



### Lever/Stable 3 Position, BSPP

0110	Thread	Colour	Function
T224.53.31.9/2	1/8"	Black	Closed Centre
T224.53.32.9/2	1/8"	Black	Open Centre
T224.53.31.9/3	1/8"	Green	Closed Centre

## Series 200 Manual & Mechanical



### Lever/Spring To Centre, BSPP

0110	Thread	Colour	Function
228.53.31.9.1/2	1/8"	Black	Closed Centre
228.53.32.9.1/2	1/8"	Black	Open Centre
228.53.31.9.1/1	1/8"	Red	Closed Centre



### Lever/Stable 3 Position, BPP

0110	Thread	Colour	Function
228.53.31.9/2	1/8"	Black	Closed Centre
228.53.31.9/1	1/8"	Red	Closed Centre



### Lever/Spring To Centre, BSPP

0110	Thread	Colour	Function
224.53.31.9.1/2	1/4"	Black	Closed Centre
224.53.31.9.1/3	1/4"	Green	Closed Centre



### Lever/3 Position Locking, BSPP

0110	Thread	Function
224.53.31.9.2	1/4"	Closed Centre



### Lever, BSPP

0110	Description	Thread	Function
212.53.31.9.1	Spring/Lever	1/2"	Closed Centre
212.53.31.9	Lever/ Lever	1/2"	Closed Centre



### Foot Valve/Spring To Centre, BSPP

0110	Thread	Function
228.53.32.10.1	1/8"	Open Centre