



techhose

QUALITY CONNECTIONS

Hydraulics

Pneumatics
& Vacuum

Industrial

Compressed Air
& Ring Main

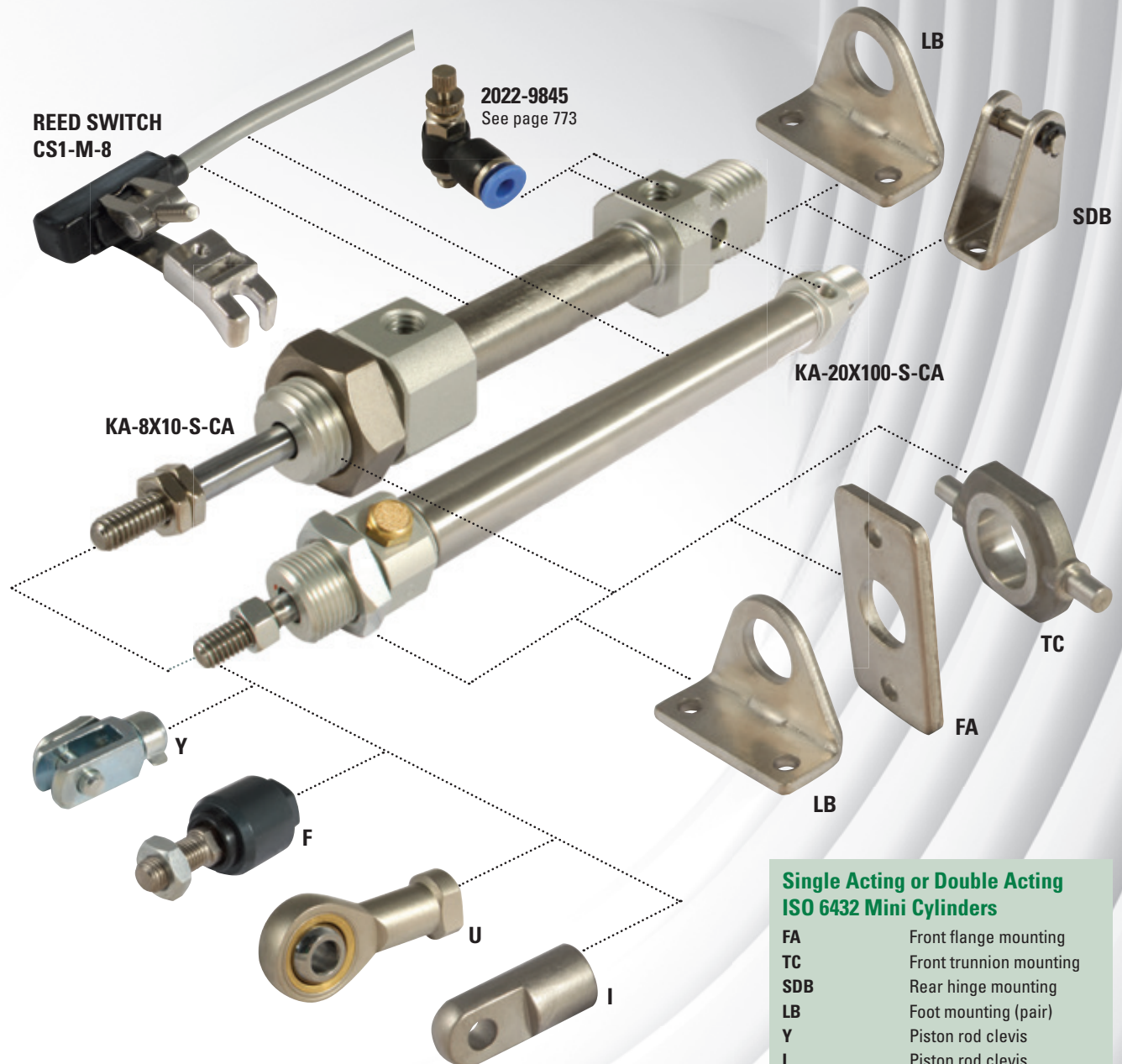
Process &
Instrumentation

Pneumatic & Vacuum

ISO 6432 Cylinders & Accessories

PNEUMATIC ISO 6432 MINI CYLINDERS

Accessories & Mounting Selector



REED SWITCH
CS1-M-8

2022-9845
See page 773

KA-8X10-S-CA

KA-20X100-S-CA

LB

SDB

TC

FA

LB

Y

F

U

I

Single Acting or Double Acting ISO 6432 Mini Cylinders

FA	Front flange mounting
TC	Front trunnion mounting
SDB	Rear hinge mounting
LB	Foot mounting (pair)
Y	Piston rod clevis
I	Piston rod clevis
F	Piston rod floating joint
U	Piston rod universal joint
Reed Switches	Two wire N/O with LED

Cylinders
Pages 452-454

Mountings
Pages 454-455

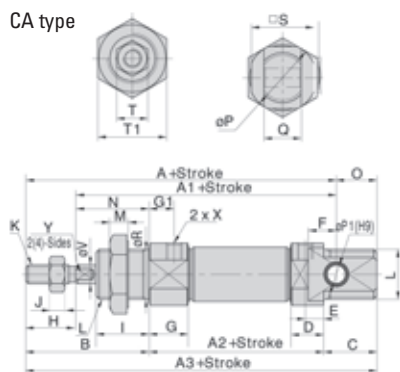
Reed Switches
Page 455

Cylinder Guides
Page 456

Technical Information

KA Series

CA type



Bore	A	A1	A2	A3	A4	A5	A6	B	C	C1	C2	D	E	F	G	G1	H	I
8	76	64	46	86	74	—	—	28	12	9.5	5	9.5	5	6	11.5	7	12	12
10	76	64	46	86	74	—	—	28	12	9.5	5	9.5	5	6	11.5	7	12	12
12	91	75	50	105	88	—	—	38	17	10.5	6	10.5	6	9	12.5	8	16	17
16	98	82	56	111	94	111	94	38	17	10.5	6	10.5	6	9	12.5	8	16	17
20	115	95	62	126	106	126	106	44	20	14.5	7.5	14.5	7.5	12	14.5	7.5	20	20
25	126	104	65	137	114.5	137	115	50	22	16	8	16	8	12	16	8	22	22
32	—	—	—	—	125	140	126	58	14	16.5	9	—	—	—	16.5	9	20	30
40	—	—	—	—	158	174	158	69	16	22	12	—	—	—	—	12	24	35

Bore	J	K	L	M	N	O	P	P1	Q	R	S	T	T1	X	V	W	Y
8	2.5	M4 x 0.7	M12 x 1.25	6	16	10	17	4	8	12	15	7	17	M5 x 0.8	4	—	—
10	2.5	M4 x 0.7	M12 x 1.25	6	16	10	17	4	8	12	15	7	17	M5 x 0.8	4	—	—
12	5	M6 x 1.0	M16 x 1.5	6	22	14	20	6	12	16	18	10	22	M5 x 0.8	6	—	5
16	5	M6 x 1.0	M16 x 1.5	6	22	13	22	6	12	16	20	10	22	M5 x 0.8	6	13.5	5
20	6	M8 x 1.25	M22 x 1.5	7	24	11	29	8	16	22	25	12	29	1/8"	8	16.5	6
25	6	M10 x 1.25	M22 x 1.5	7	28	11	33.5	8	16	22	30	17	29	1/8"	10	18.5	8
32	6	M10 x 1.25	M30 x 1.5	7	38	—	37.5	—	—	30	34.5	17	36	1/8"	12	10.5	10
40	7	M12 x 1.25	M38 x 1.5	8	45	—	46.5	—	—	38	42.5	17	46	1/4"	16	12.5	14

KB Series

Ø16 to Ø25

Bore	A	A1	A2	A3	A4	A5	B	C	D
16	98	82	56	111	94	111	38	17	12.1
20	115	95	62	126	106	126	44	20	14.5
25	126	104	65	137	113.5	137	50	22	16

Bore	D1	D2	D3	E	F	G	G1	G2
16	7	9	12.1	6	9	12.5	7.5	9.5
20	7.5	10.5	14.5	8	12	14.5	7.5	10.5
25	8	10.5	14.5	8	12	16	8	12

Bore	H	I	J	K	L	M	O	N
16	16	17	5	M6 x 1.0	M16 x 1.5	6	13	22
20	20	20	6	M8 x 1.25	M22 x 1.5	7	11	24
25	22	22	6	M10 x 1.25	M22 x 1.5	7	11	28

Bore	P	Q	R	S	T	T1	V	W	X
16	22	12	5	20	10	22	6	13.5	M5 x 0.8
20	29	16	6	25	12	29	8	16.5	1.8"
25	33.5	16	9	30	17	29	10	18.5	1/8"

Ø32 & Ø40

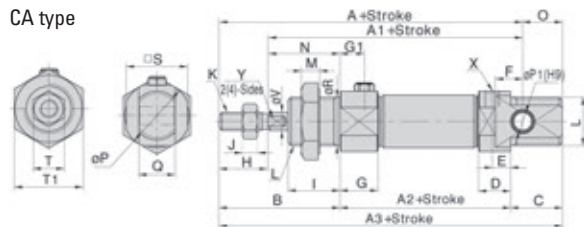
Bore	A2	A4	A5	B	C	D	D1	D2	D3	D4
32	68	124	140	58	14	16.5	9	11.5	14.5	7.5
40	89	157.5	174	69	16	22	12	12	21.5	11.5

Bore	D5	G	G1	G2	H	I	J	K
32	11	16.5	9	11.8	20	30	6	M10 x 1.25
40	14	22	12	12	24	35	7	M12 x 1.25

Bore	L	M	N	P	S	T	T1	V	W	X
32	M30 x 1.5	7	38	37.5	34.5	17	36	12	10.5	1/8"
40	M38 x 1.5	8	45	46.5	42.5	17	46	16	12.5	1/4"

KC Series

CA type



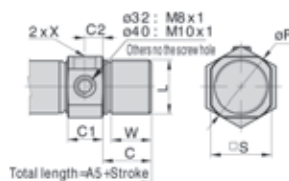
Inner Structure



No.	Item	Material
1	Rod	304
2	Rod nut	Carbon steel
3	Front cover packing	NBR
4	Front cover nut	Carbon steel
5	Bushing	Wear-resistant material
6	Front cover	Aluminium
7	Barrel	304
8	Bumper	TPU
9	Piston	303*
10	Piston O-ring	NBR
11	Wear ring	Wear-resistant material
12	Nut	Carbon steel
13	Back cover	Aluminium alloy

*16-40 bore: aluminium alloy.

CM type



Bore Stroke	A			A1		
	0-50	51-100	101-150	0-50	51-100	101-150
8	101	—	—	89	—	—
10	101	—	—	89	—	—
12	116	—	—	100	—	—
16	123	148	—	107	132	—
20	140	165	190	120	145	170
25	151	176	201	129	154	179
32	—	—	—	—	—	—
40	—	—	—	—	—	—

Bore Stroke	A4			A5		
	0-50	51-100	101-150	0-50	51-100	101-150
8	99	—	—	—	—	—
10	99	—	—	—	—	—
12	113	—	—	—	—	—
16	119	144	—	136	161	—
20	131	156	181	151	176	201
25	139.5	164.5	189.5	162	187	212
32	150	175	200	165	190	215
40	183	208	233	199	224	249

Bore Stroke	A2			A3		
	0-50	51-100	101-150	0-50	51-100	101-150
8	71	—	—	111	—	—
10	71	—	—	111	—	—
12	75	—	—	130	—	—
16	81	106	—	136	161	—
20	87	112	137	151	176	201
25	90	115	140	162	187	212
32	—	—	—	—	—	—
40	—	—	—	—	—	—

Bore Stroke	A6						
	0-50	51-100	101-150	B	C	C1	C2
8	—	—	—	28	12	9.5	5
10	—	—	—	28	12	9.5	5
12	—	—	—	38	17	10.5	5
16	119	144	—	38	17	10.5	5
20	131	156	181	44	20	14.5	7.5
25	140	165	190	50	22	16	8
32	151	176	201	58	14	16.5	9
40	183	208	233	69	16	22	12

PNEUMATIC CYLINDERS



ISO 6432 Mini Cylinders

Medium:

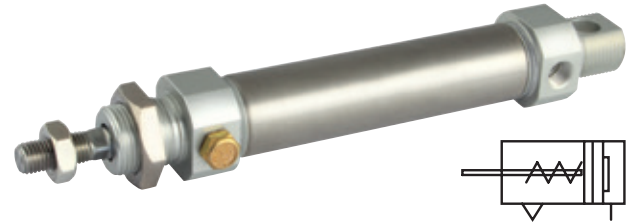
Clean compressed air. Filtered (40µm) and lubricated cushioning-bumper.

Please note: Bore sizes 8mm-12mm and 32mm-40mm are available on a lead time. Please contact our sales office for details.



Working Temperature:
-20°C to +70°C

Working Pressure:
2 to 10 bar



Stainless Steel Piston Rod and Barrel as Standard

Magnetic Single Acting

0334	Bore mm	Stroke mm	Thread	Locknut Thread	Piston Rod Thread
KC-8X10-S-CA	8	10	M5	M12 x 1.25	M4 x 0.7
KC-8X15-S-CA	8	15	M5	M12 x 1.25	M4 x 0.7
KC-8X20-S-CA	8	20	M5	M12 x 1.25	M4 x 0.7
KC-8X25-S-CA	8	25	M5	M12 x 1.25	M4 x 0.7
KC-8X30-S-CA	8	30	M5	M12 x 1.25	M4 x 0.7
KC-8X40-S-CA	8	40	M5	M12 x 1.25	M4 x 0.7
KC-8X50-S-CA	8	50	M5	M12 x 1.25	M4 x 0.7
KC-10X10-S-CA	10	10	M5	M12 x 1.25	M4 x 0.7
KC-10X15-S-CA	10	15	M5	M12 x 1.25	M4 x 0.7
KC-10X20-S-CA	10	20	M5	M12 x 1.25	M4 x 0.7
KC-10X25-S-CA	10	25	M5	M12 x 1.25	M4 x 0.7
KC-10X30-S-CA	10	30	M5	M12 x 1.25	M4 x 0.7
KC-10X40-S-CA	10	40	M5	M12 x 1.25	M4 x 0.7
KC-10X50-S-CA	10	50	M5	M12 x 1.25	M4 x 0.7
KC-12X10-S-CA	12	10	M5	M16 x 1.5	M6 x 1.0
KC-12X15-S-CA	12	15	M5	M16 x 1.5	M6 x 1.0
KC-12X20-S-CA	12	20	M5	M16 x 1.5	M6 x 1.0
KC-12X25-S-CA	12	25	M5	M16 x 1.5	M6 x 1.0
KC-12X30-S-CA	12	30	M5	M16 x 1.5	M6 x 1.0
KC-12X40-S-CA	12	40	M5	M16 x 1.5	M6 x 1.0
KC-12X50-S-CA	12	50	M5	M16 x 1.5	M6 x 1.0
KC-16X10-S-CA	16	10	M5	M16 x 1.5	M6 x 1.0
KC-16X15-S-CA	16	15	M5	M16 x 1.5	M6 x 1.0
KC-16X20-S-CA	16	20	M5	M16 x 1.5	M6 x 1.0
KC-16X25-S-CA	16	25	M5	M16 x 1.5	M6 x 1.0
KC-16X30-S-CA	16	30	M5	M16 x 1.5	M6 x 1.0
KC-16X40-S-CA	16	40	M5	M16 x 1.5	M6 x 1.0
KC-16X50-S-CA	16	50	M5	M16 x 1.5	M6 x 1.0
KC-16X60-S-CA	16	60	M5	M16 x 1.5	M6 x 1.0
KC-16X75-S-CA	16	75	M5	M16 x 1.5	M6 x 1.0
KC-16X80-S-CA	16	80	M5	M16 x 1.5	M6 x 1.0
KC-16X100-S-CA	16	100	M5	M16 x 1.5	M6 x 1.0
KC-20X10-S-CA	20	10	1/8"	M22 x 1.5	M8 x 1.25
KC-20X15-S-CA	20	15	1/8"	M22 x 1.5	M8 x 1.25
KC-20X20-S-CA	20	20	1/8"	M22 x 1.5	M8 x 1.25
KC-20X25-S-CA	20	25	1/8"	M22 x 1.5	M8 x 1.25
KC-20X30-S-CA	20	30	1/8"	M22 x 1.5	M8 x 1.25
KC-20X40-S-CA	20	40	1/8"	M22 x 1.5	M8 x 1.25
KC-20X50-S-CA	20	50	1/8"	M22 x 1.5	M8 x 1.25
KC-20X60-S-CA	20	60	1/8"	M22 x 1.5	M8 x 1.25
KC-20X75-S-CA	20	75	1/8"	M22 x 1.5	M8 x 1.25
KC-20X80-S-CA	20	80	1/8"	M22 x 1.5	M8 x 1.25

0334	Bore mm	Stroke mm	Thread	Locknut Thread	Piston Rod Thread
KC-20X100-S-CA	20	100	1/8"	M22 x 1.5	M8 x 1.25
KC-20X125-S-CA	20	125	1/8"	M22 x 1.5	M8 x 1.25
KC-20X150-S-CA	20	150	1/8"	M22 x 1.5	M8 x 1.25
KC-25X10-S-CA	25	10	1/8"	M22 x 1.5	M10 x 1.25
KC-25X20-S-CA	25	20	1/8"	M22 x 1.5	M10 x 1.25
KC-25X25-S-CA	25	25	1/8"	M22 x 1.5	M10 x 1.25
KC-25X30-S-CA	25	30	1/8"	M22 x 1.5	M10 x 1.25
KC-25X40-S-CA	25	40	1/8"	M22 x 1.5	M10 x 1.25
KC-25X50-S-CA	25	50	1/8"	M22 x 1.5	M10 x 1.25
KC-25X60-S-CA	25	60	1/8"	M22 x 1.5	M10 x 1.25
KC-25X75-S-CA	25	75	1/8"	M22 x 1.5	M10 x 1.25
KC-25X80-S-CA	25	80	1/8"	M22 x 1.5	M10 x 1.25
KC-25X100-S-CA	25	100	1/8"	M22 x 1.5	M10 x 1.25
KC-25X125-S-CA	25	125	1/8"	M22 x 1.5	M10 x 1.25
KC-25X150-S-CA	25	150	1/8"	M22 x 1.5	M10 x 1.25
KC-32X10-S-CM	32	10	1/8"	M30 x 1.5	M10 x 1.25
KC-32X15-S-CM	32	15	1/8"	M30 x 1.5	M10 x 1.25
KC-32X20-S-CM	32	20	1/8"	M30 x 1.5	M10 x 1.25
KC-32X25-S-CM	32	25	1/8"	M30 x 1.5	M10 x 1.25
KC-32X30-S-CM	32	30	1/8"	M30 x 1.5	M10 x 1.25
KC-32X40-S-CM	32	40	1/8"	M30 x 1.5	M10 x 1.25
KC-32X50-S-CM	32	50	1/8"	M30 x 1.5	M10 x 1.25
KC-32X60-S-CM	32	60	1/8"	M30 x 1.5	M10 x 1.25
KC-32X75-S-CM	32	75	1/8"	M30 x 1.5	M10 x 1.25
KC-32X80-S-CM	32	80	1/8"	M30 x 1.5	M10 x 1.25
KC-32X100-S-CM	32	100	1/8"	M30 x 1.5	M10 x 1.25
KC-32X125-S-CM	32	125	1/8"	M30 x 1.5	M10 x 1.25
KC-32X150-S-CM	32	150	1/8"	M30 x 1.5	M10 x 1.25
KC-40X10-S-CM	40	10	1/4"	M38 x 1.5	M12 x 1.25
KC-40X15-S-CM	40	15	1/4"	M38 x 1.5	M12 x 1.25
KC-40X20-S-CM	40	20	1/4"	M38 x 1.5	M12 x 1.25
KC-40X25-S-CM	40	25	1/4"	M38 x 1.5	M12 x 1.25
KC-40X30-S-CM	40	30	1/4"	M38 x 1.5	M12 x 1.25
KC-40X40-S-CM	40	40	1/4"	M38 x 1.5	M12 x 1.25
KC-40X50-S-CM	40	50	1/4"	M38 x 1.5	M12 x 1.25
KC-40X60-S-CM	40	60	1/4"	M38 x 1.5	M12 x 1.25
KC-40X75-S-CM	40	75	1/4"	M38 x 1.5	M12 x 1.25
KC-40X80-S-CM	40	80	1/4"	M38 x 1.5	M12 x 1.25
KC-40X100-S-CM	40	100	1/4"	M38 x 1.5	M12 x 1.25
KC-40X125-S-CM	40	125	1/4"	M38 x 1.5	M12 x 1.25
KC-40X150-S-CM	40	150	1/4"	M38 x 1.5	M12 x 1.25

Tech Sheet 3001

ISO 6432 Mini Cylinders

Medium:

Clean compressed air. Filtered (40µm) and lubricated cushioning
KA-Bumper, KB-Adjustable.

Please note: Bore sizes 32mm-40mm are available on a lead time.

Please contact our sales office for details.



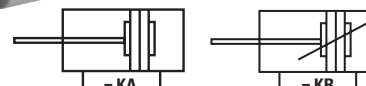
° Working Temperature:
-20°C to +70°C

Working Pressure:
1 to 10 bar

Stainless Steel Piston Rod and Barrel as Standard

Magnetic Double Acting

0334	Bore mm	Stroke mm	Thread	Locknut Thread	Piston Rod Thread
KA-8X15-S-CA	8	15	M5	M12 x 1.25	M4 x 0.7
KA-8X20-S-CA	8	20	M5	M12 x 1.25	M4 x 0.7
KA-8X25-S-CA	8	25	M5	M12 x 1.25	M4 x 0.7
KA-8X30-S-CA	8	30	M5	M12 x 1.25	M4 x 0.7
KA-8X40-S-CA	8	40	M5	M12 x 1.25	M4 x 0.7
KA-8X50-S-CA	8	50	M5	M12 x 1.25	M4 x 0.7
KA-8X60-S-CA	8	60	M5	M12 x 1.25	M4 x 0.7
KA-8X75-S-CA	8	75	M5	M12 x 1.25	M4 x 0.7
KA-8X80-S-CA	8	80	M5	M12 x 1.25	M4 x 0.7
KA-8X100-S-CA	8	100	M5	M12 x 1.25	M4 x 0.7
KA-8X125-S-CA	8	125	M5	M12 x 1.25	M4 x 0.7
KA-8X150-S-CA	8	150	M5	M12 x 1.25	M4 x 0.7
KA-10X10-S-CA	10	10	M5	M12 x 1.25	M4 x 0.7
KA-10X15-S-CA	10	15	M5	M12 x 1.25	M4 x 0.7
KA-10X20-S-CA	10	20	M5	M12 x 1.25	M4 x 0.7
KA-10X25-S-CA	10	25	M5	M12 x 1.25	M4 x 0.7
KA-10X30-S-CA	10	30	M5	M12 x 1.25	M4 x 0.7
KA-10X40-S-CA	10	40	M5	M12 x 1.25	M4 x 0.7
KA-10X50-S-CA	10	50	M5	M12 x 1.25	M4 x 0.7
KA-10X60-S-CA	10	60	M5	M12 x 1.25	M4 x 0.7
KA-10X75-S-CA	10	75	M5	M12 x 1.25	M4 x 0.7
KA-10X80-S-CA	10	80	M5	M12 x 1.25	M4 x 0.7
KA-10X100-S-CA	10	100	M5	M12 x 1.25	M4 x 0.7
KA-10X125-S-CA	10	125	M5	M12 x 1.25	M4 x 0.7
KA-10X150-S-CA	10	150	M5	M12 x 1.25	M4 x 0.7
KA-10X160-S-CA	10	160	M5	M12 x 1.25	M4 x 0.7
KA-10X175-S-CA	10	175	M5	M12 x 1.25	M4 x 0.7
KA-10X200-S-CA	10	200	M5	M12 x 1.25	M4 x 0.7
KA-12X10-S-CA	12	10	M5	M16 x 1.5	M6 x 1.0
KA-12X15-S-CA	12	15	M5	M16 x 1.5	M6 x 1.0
KA-12X20-S-CA	12	20	M5	M16 x 1.5	M6 x 1.0
KA-12X25-S-CA	12	25	M5	M16 x 1.5	M6 x 1.0
KA-12X30-S-CA	12	30	M5	M16 x 1.5	M6 x 1.0
KA-12X40-S-CA	12	40	M5	M16 x 1.5	M6 x 1.0
KA-12X50-S-CA	12	50	M5	M16 x 1.5	M6 x 1.0
KA-12X60-S-CA	12	60	M5	M16 x 1.5	M6 x 1.0
KA-12X75-S-CA	12	75	M5	M16 x 1.5	M6 x 1.0
KA-12X80-S-CA	12	80	M5	M16 x 1.5	M6 x 1.0
KA-12X100-S-CA	12	100	M5	M16 x 1.5	M6 x 1.0
KA-12X125-S-CA	12	125	M5	M16 x 1.5	M6 x 1.0
KA-12X150-S-CA	12	150	M5	M16 x 1.5	M6 x 1.0
KA-12X175-S-CA	12	175	M5	M16 x 1.5	M6 x 1.0
KA-12X200-S-CA	12	200	M5	M16 x 1.5	M6 x 1.0
KA-12X250-S-CA	12	250	M5	M16 x 1.5	M6 x 1.0
KB-16X10-S-CA	16	10	M5	M16 x 1.5	M6 x 1.0
KB-16X15-S-CA	16	15	M5	M16 x 1.5	M6 x 1.0
KB-16X20-S-CA	16	20	M5	M16 x 1.5	M6 x 1.0
KB-16X25-S-CA	16	25	M5	M16 x 1.5	M6 x 1.0
KB-16X30-S-CA	16	30	M5	M16 x 1.5	M6 x 1.0



0334	Bore mm	Stroke mm	Thread	Locknut Thread	Piston Rod Thread
KB-16X40-S-CA	16	40	M5	M16 x 1.5	M6 x 1.0
KB-16X50-S-CA	16	50	M5	M16 x 1.5	M6 x 1.0
KB-16X60-S-CA	16	60	M5	M16 x 1.5	M6 x 1.0
KB-16X75-S-CA	16	75	M5	M16 x 1.5	M6 x 1.0
KB-16X80-S-CA	16	80	M5	M16 x 1.5	M6 x 1.0
KB-16X100-S-CA	16	100	M5	M16 x 1.5	M6 x 1.0
KB-16X125-S-CA	16	125	M5	M16 x 1.5	M6 x 1.0
KB-16X150-S-CA	16	150	M5	M16 x 1.5	M6 x 1.0
KB-16X160-S-CA	16	160	M5	M16 x 1.5	M6 x 1.0
KB-16X175-S-CA	16	175	M5	M16 x 1.5	M6 x 1.0
KB-16X200-S-CA	16	200	M5	M16 x 1.5	M6 x 1.0
KB-16X250-S-CA	16	250	M5	M16 x 1.5	M6 x 1.0
KB-16X300-S-CA	16	300	M5	M16 x 1.5	M6 x 1.0
KB-20X10-S-CA	20	10	1/8"	M22 x 1.5	M8 x 1.25
KB-20X15-S-CA	20	15	1/8"	M22 x 1.5	M8 x 1.25
KB-20X20-S-CA	20	20	1/8"	M22 x 1.5	M8 x 1.25
KB-20X25-S-CA	20	25	1/8"	M22 x 1.5	M8 x 1.25
KB-20X30-S-CA	20	30	1/8"	M22 x 1.5	M8 x 1.25
KB-20X40-S-CA	20	40	1/8"	M22 x 1.5	M8 x 1.25
KB-20X50-S-CA	20	50	1/8"	M22 x 1.5	M8 x 1.25
KB-20X60-S-CA	20	60	1/8"	M22 x 1.5	M8 x 1.25
KB-20X75-S-CA	20	75	1/8"	M22 x 1.5	M8 x 1.25
KB-20X80-S-CA	20	80	1/8"	M22 x 1.5	M8 x 1.25
KB-20X100-S-CA	20	100	1/8"	M22 x 1.5	M8 x 1.25
KB-20X125-S-CA	20	125	1/8"	M22 x 1.5	M8 x 1.25
KB-20X150-S-CA	20	150	1/8"	M22 x 1.5	M8 x 1.25
KB-20X160-S-CA	20	160	1/8"	M22 x 1.5	M8 x 1.25
KB-20X175-S-CA	20	175	1/8"	M22 x 1.5	M8 x 1.25
KB-20X200-S-CA	20	200	1/8"	M22 x 1.5	M8 x 1.25
KB-20X250-S-CA	20	250	1/8"	M22 x 1.5	M8 x 1.25
KB-20X300-S-CA	20	300	1/8"	M22 x 1.5	M8 x 1.25
KB-20X350-S-CA	20	350	1/8"	M22 x 1.5	M8 x 1.25
KB-20X400-S-CA	20	400	1/8"	M22 x 1.5	M8 x 1.25
KB-20X450-S-CA	20	450	1/8"	M22 x 1.5	M8 x 1.25
KB-20X500-S-CA	20	500	1/8"	M22 x 1.5	M8 x 1.25
KB-25X10-S-CA	25	10	1/8"	M22 x 1.5	M10 x 1.25
KB-25X15-S-CA	25	15	1/8"	M22 x 1.5	M10 x 1.25
KB-25X20-S-CA	25	20	1/8"	M22 x 1.5	M10 x 1.25
KB-25X25-S-CA	25	25	1/8"	M22 x 1.5	M10 x 1.25
KB-25X30-S-CA	25	30	1/8"	M22 x 1.5	M10 x 1.25
KB-25X40-S-CA	25	40	1/8"	M22 x 1.5	M10 x 1.25
KB-25X50-S-CA	25	50	1/8"	M22 x 1.5	M10 x 1.25
KB-25X60-S-CA	25	60	1/8"	M22 x 1.5	M10 x 1.25
KB-25X75-S-CA	25	75	1/8"	M22 x 1.5	M10 x 1.25
KB-25X80-S-CA	25	80	1/8"	M22 x 1.5	M10 x 1.25
KB-25X100-S-CA	25	100	1/8"	M22 x 1.5	M10 x 1.25
KB-25X125-S-CA	25	125	1/8"	M22 x 1.5	M10 x 1.25
KB-25X150-S-CA	25	150	1/8"	M22 x 1.5	M10 x 1.25

Tech Sheet 3001

Further sizes in this range continued on next page

PNEUMATIC CYLINDERS



ISO 6432 Mini Cylinders

Medium:

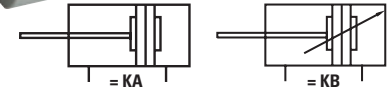
Clean compressed air. Filtered (40µm) and lubricated cushioning KA-Bumper, KB-Adjustable.

Please note: Bore sizes 32mm-40mm are available on a lead time.

Please contact our sales office for details.

Working Temperature:
-20°C to +70°C

Working Pressure:
1 to 10 bar



Stainless Steel Piston Rod and Barrel as Standard

Magnetic Double Acting

0334	Bore mm	Stroke mm	Thread	Locknut Thread	Piston Rod Thread
KB-25X160-S-CA	25	160	1/8"	M22 x 1.5	M10 x 1.25
KB-25X175-S-CA	25	175	1/8"	M22 x 1.5	M10 x 1.25
KB-25X200-S-CA	25	200	1/8"	M22 x 1.5	M10 x 1.25
KB-25X250-S-CA	25	250	1/8"	M22 x 1.5	M10 x 1.25
KB-25X300-S-CA	25	300	1/8"	M22 x 1.5	M10 x 1.25
KB-25X350-S-CA	25	350	1/8"	M22 x 1.5	M10 x 1.25
KB-25X400-S-CA	25	400	1/8"	M22 x 1.5	M10 x 1.25
KB-25X450-S-CA	25	450	1/8"	M22 x 1.5	M10 x 1.25
KB-25X500-S-CA	25	500	1/8"	M22 x 1.5	M10 x 1.25
KB-25X600-S-CA	25	600	1/8"	M22 x 1.5	M10 x 1.25
KB-32X10-S-CM	32	10	1/8"	M30 x 1.5	M10 x 1.25
KB-32X15-S-CM	32	15	1/8"	M30 x 1.5	M10 x 1.25
KB-32X20-S-CM	32	20	1/8"	M30 x 1.5	M10 x 1.25
KB-32X25-S-CM	32	25	1/8"	M30 x 1.5	M10 x 1.25
KB-32X30-S-CM	32	30	1/8"	M30 x 1.5	M10 x 1.25
KB-32X40-S-CM	32	40	1/8"	M30 x 1.5	M10 x 1.25
KB-32X50-S-CM	32	50	1/8"	M30 x 1.5	M10 x 1.25
KB-32X60-S-CM	32	60	1/8"	M30 x 1.5	M10 x 1.25
KB-32X75-S-CM	32	75	1/8"	M30 x 1.5	M10 x 1.25
KB-32X80-S-CM	32	80	1/8"	M30 x 1.5	M10 x 1.25
KB-32X100-S-CM	32	100	1/8"	M30 x 1.5	M10 x 1.25
KB-32X125-S-CM	32	125	1/8"	M30 x 1.5	M10 x 1.25
KB-32X150-S-CM	32	150	1/8"	M30 x 1.5	M10 x 1.25
KB-32X160-S-CM	32	160	1/8"	M30 x 1.5	M10 x 1.25
KB-32X175-S-CM	32	175	1/8"	M30 x 1.5	M10 x 1.25
KB-32X200-S-CM	32	200	1/8"	M30 x 1.5	M10 x 1.25
KB-32X250-S-CM	32	250	1/8"	M30 x 1.5	M10 x 1.25
KB-32X300-S-CM	32	300	1/8"	M30 x 1.5	M10 x 1.25

0334	Bore mm	Stroke mm	Thread	Locknut Thread	Piston Rod Thread
KB-32X350-S-CM	32	350	1/8"	M30 x 1.5	M10 x 1.25
KB-32X400-S-CM	32	400	1/8"	M30 x 1.5	M10 x 1.25
KB-32X450-S-CM	32	450	1/8"	M30 x 1.5	M10 x 1.25
KB-32X500-S-CM	32	500	1/8"	M30 x 1.5	M10 x 1.25
KB-32X600-S-CM	32	600	1/8"	M30 x 1.5	M10 x 1.25
KB-40X10-S-CM	40	10	1/4"	M38 x 1.5	M12 x 1.25
KB-40X15-S-CM	40	15	1/4"	M38 x 1.5	M12 x 1.25
KB-40X20-S-CM	40	20	1/4"	M38 x 1.5	M12 x 1.25
KB-40X25-S-CM	40	25	1/4"	M38 x 1.5	M12 x 1.25
KB-40X30-S-CM	40	30	1/4"	M38 x 1.5	M12 x 1.25
KB-40X40-S-CM	40	40	1/4"	M38 x 1.5	M12 x 1.25
KB-40X50-S-CM	40	50	1/4"	M38 x 1.5	M12 x 1.25
KB-40X60-S-CM	40	60	1/4"	M38 x 1.5	M12 x 1.25
KB-40X75-S-CM	40	75	1/4"	M38 x 1.5	M12 x 1.25
KB-40X80-S-CM	40	80	1/4"	M38 x 1.5	M12 x 1.25
KB-40X100-S-CM	40	100	1/4"	M38 x 1.5	M12 x 1.25
KB-40X125-S-CM	40	125	1/4"	M38 x 1.5	M12 x 1.25
KB-40X150-S-CM	40	150	1/4"	M38 x 1.5	M12 x 1.25
KB-40X160-S-CM	40	160	1/4"	M38 x 1.5	M12 x 1.25
KB-40X175-S-CM	40	175	1/4"	M38 x 1.5	M12 x 1.25
KB-40X200-S-CM	40	200	1/4"	M38 x 1.5	M12 x 1.25
KB-40X250-S-CM	40	250	1/4"	M38 x 1.5	M12 x 1.25
KB-40X300-S-CM	40	300	1/4"	M38 x 1.5	M12 x 1.25
KB-40X350-S-CM	40	350	1/4"	M38 x 1.5	M12 x 1.25
KB-40X400-S-CM	40	400	1/4"	M38 x 1.5	M12 x 1.25
KB-40X450-S-CM	40	450	1/4"	M38 x 1.5	M12 x 1.25
KB-40X500-S-CM	40	500	1/4"	M38 x 1.5	M12 x 1.25
KB-40X600-S-CM	40	600	1/4"	M38 x 1.5	M12 x 1.25

Tech Sheet 3001

ISO 6432 Mountings



Front Flange Mounting FA

0334	Bore mm
F-KA8FA	8/10
F-KA12FA	12/16
F-KA20FA	20/25

Tech Sheet 3002



Front Trunnion Mounting TC

0334	Bore mm
F-KA8TC	8/10
F-KA12TC	12/16
F-KA20TC	20/25
F-KA32TC	32
F-KA40TC	40

Tech Sheet 3003

ISO 6432 Mountings



Rear Hinge Mounting SDB

0334	Bore mm
F-KA8SDB	8/10
F-KA12SDB	12/16
F-KA20SDB	20/25
F-KA32SDB	32
F-KA40SDB	40
Tech Sheet 3004	



Foot Mounting LB, (Pair)

0334	Bore mm
F-KA8LB	8/10
F-KA12LB	12/16
F-KA20LB	20/25
F-KA32LB	32
F-KA40LB	40
Tech Sheet 3005	



Piston Rod Clevis Y

0334	Bore mm	Thread
F-M04070YE	8/10	M4 x 0.7
F-M06100YE	12/16	M6 x 1
F-M08125YE	20	M8 x 1.25
F-M1025YE	25/32	M10 x 1.25
Tech Sheet 3006		



Piston Rod Clevis I

0334	Bore mm	Thread
F-M06100I	12/16	M6 x 1
F-M08125I	20	M8 x 1.25
F-M10125I	25/32	M10 x 1.25
F-M12125I	40	M12 x 1.25
Tech Sheet 3007		



Piston Rod Floating Joint F

0334	Bore mm	Thread
F-M08125F	20	M8 x 1.25
F-M10125F	25/32	M10 x 1.25
F-M12125F	40	M12 x 1.25
Tech Sheet 3008		



Piston Rod Universal Joint U

0334	Bore mm	Thread
F-M04070U	8/10	M4 x 0.7
F-M06100U	12/16	M6 x 1
F-M08125U	20	M8 x 1.25
F-M10125U	25/32	M10 x 1.25
F-M12125U	40	M12 x 1.25
Tech Sheet 3009		

Reed Switches to suit ISO 6432



Two Wire, N/O with LED

0334	Bore mm	Voltage
CS1-M-8	8	5-240V AC/DC
CS1-M-10	10	5-240V AC/DC
CS1-M-12	12	5-240V AC/DC
CS1-M-16	16	5-240V AC/DC
CS1-M-20	20	5-240V AC/DC
CS1-M-25	25	5-240V AC/DC
CS1-M-32	32	5-240V AC/DC
CS1-M-40	40	5-240V AC/DC
Tech Sheet 3010		

PNEUMATIC CYLINDERS



ISO 6432 Mini Cylinder Guides

The guide unit allows for standard ISO 6432 cylinder to move loads with high positioning accuracy.

Features and Benefits

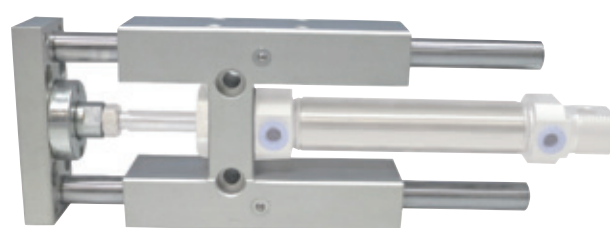
- Protection against rotation at high torques.
- High guide precision for cylinder guiding.
- Supplied plain or recirculating ball bearing guides.



With Slide Bearings

0334	Bore mm	Stroke mm
KRF-16X50-0	16	50
KRF-16X100-0	16	100
KRF-16X160-0	16	160
KRF-16X200-0	16	200
KRF-16X250-0	16	250
KRF-16X320-0	16	320
KRF-16X400-0	16	400
KRF-16X500-0	16	500
KRF-20X50-0	20	50
KRF-20X100-0	20	100
KRF-20X160-0	20	160
KRF-20X200-0	20	200
KRF-20X250-0	20	250
KRF-20X320-0	20	320
KRF-20X400-0	20	400
KRF-20X500-0	20	500
KRF-25X50-0	25	50
KRF-25X100-0	25	100
KRF-25X160-0	25	160
KRF-25X200-0	25	200
KRF-25X250-0	25	250
KRF-25X320-0	25	320
KRF-25X400-0	25	400
KRF-25X500-0	25	500

Tech Sheet 20893



With Ball Bearings

0334	Bore mm	Stroke mm
KRF-16X50-1	16	50
KRF-16X100-1	16	100
KRF-16X160-1	16	160
KRF-16X200-1	16	200
KRF-16X250-1	16	250
KRF-16X320-1	16	320
KRF-16X400-1	16	400
KRF-16X500-1	16	500
KRF-20X50-1	20	50
KRF-20X100-1	20	100
KRF-20X160-1	20	160
KRF-20X200-1	20	200
KRF-20X250-1	20	250
KRF-20X320-1	20	320
KRF-20X400-1	20	400
KRF-20X500-1	20	500
KRF-25X50-1	25	50
KRF-25X100-1	25	100
KRF-25X160-1	25	160
KRF-25X200-1	25	200
KRF-25X250-1	25	250
KRF-25X320-1	25	320
KRF-25X400-1	25	400
KRF-25X500-1	25	500

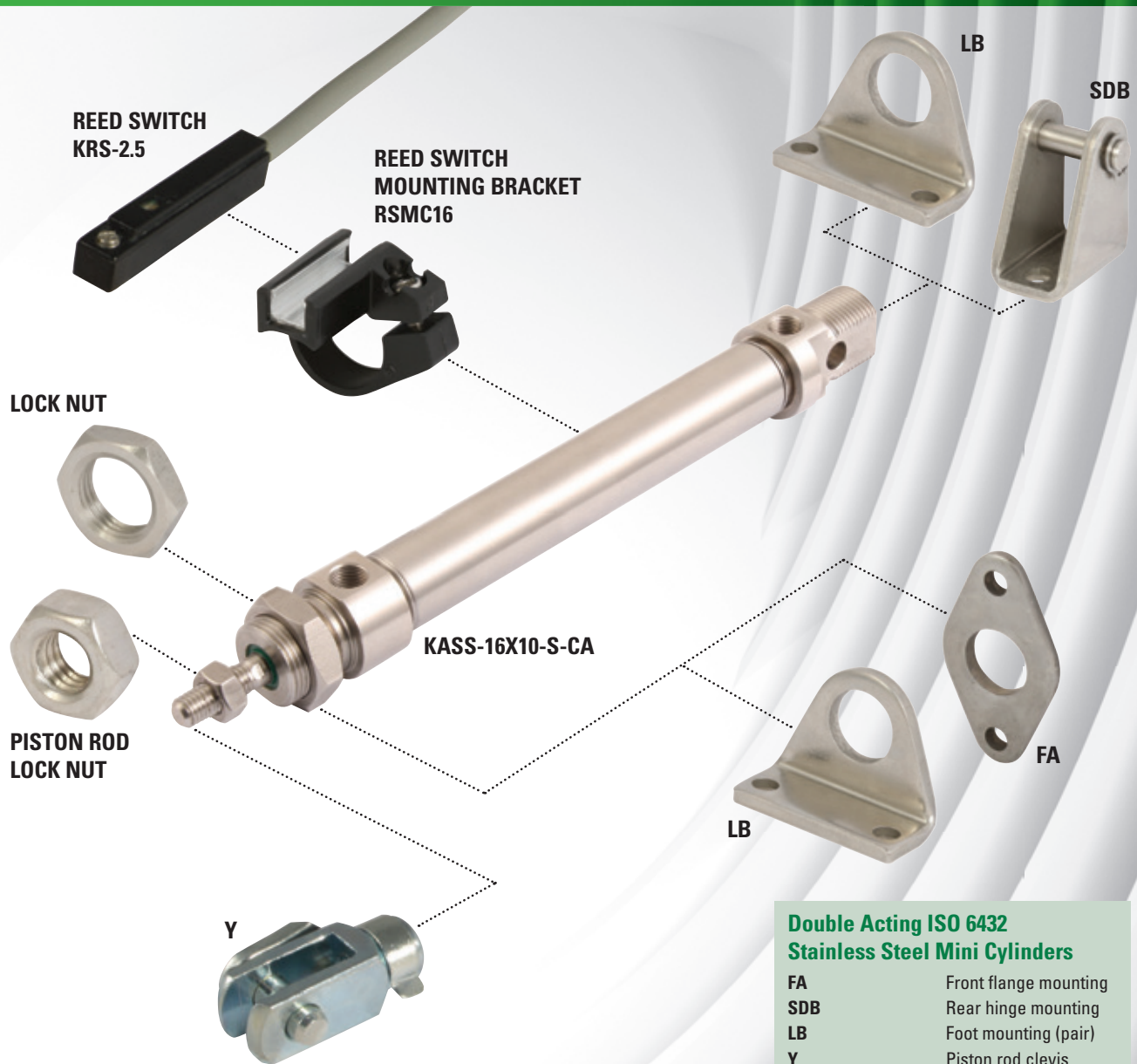
Tech Sheet 20894

PNEUMATIC STAINLESS STEEL ISO 6432 MINI CYLINDERS

Accessories & Mounting Selector

stainless
steel

FT PRO[®]



Double Acting ISO 6432 Stainless Steel Mini Cylinders

FA	Front flange mounting
SDB	Rear hinge mounting
LB	Foot mounting (pair)
Y	Piston rod clevis

Lock Nut

Piston Rod Lock Nut

Reed Switches	Two wire N/O with LED
Reed Switch Bracket	

Cylinders

Pages 452-454

Mountings

Pages 454-455

Reed Switches

Page 455

Cylinder Guides

Page 456

PNEUMATIC STAINLESS STEEL ISO 6432 MINI CYLINDERS

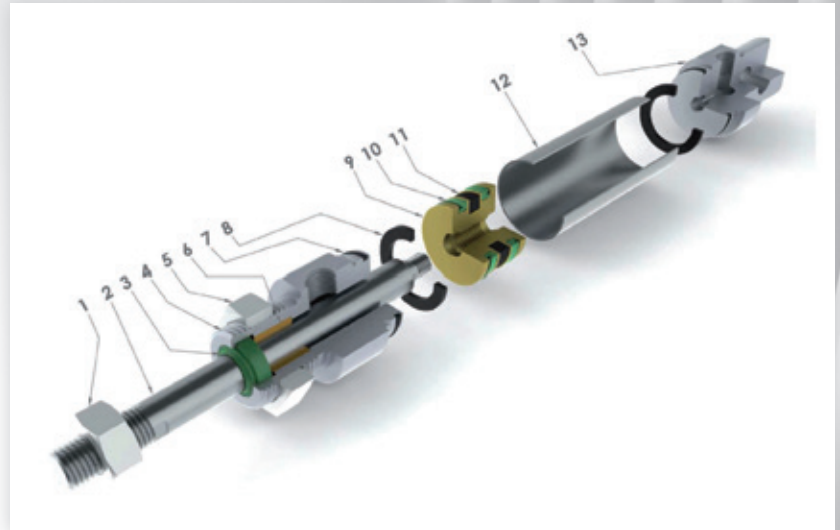
stainless
steel



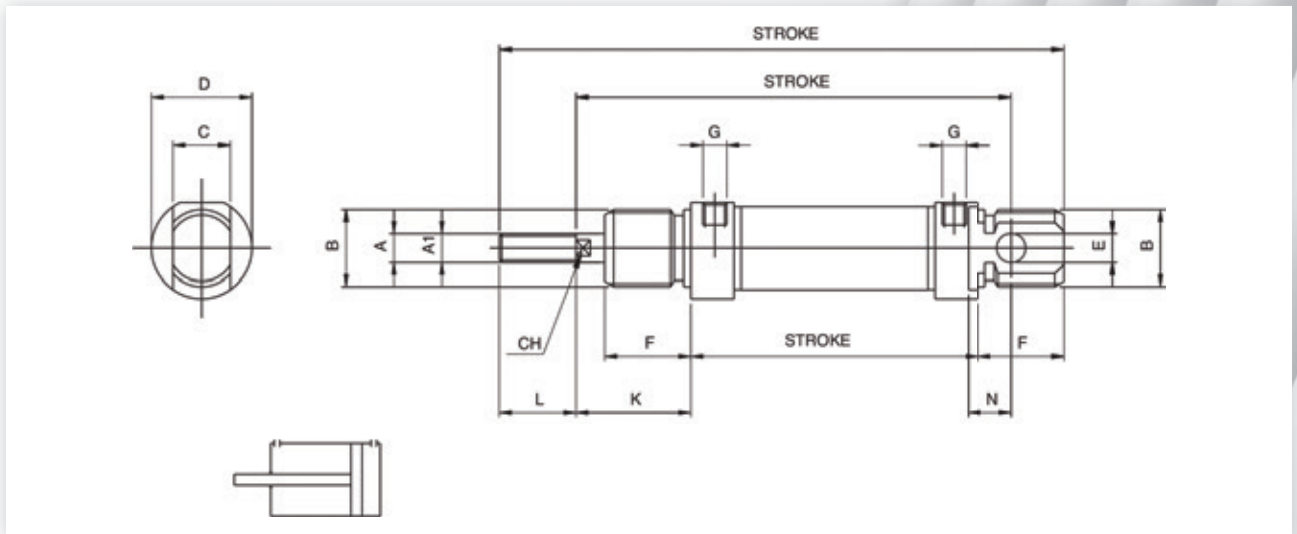
Technical Information

Component Parts & Materials

No.	Item	Material
1	Nut	Steel AISI 304
2	Piston rod	Steel AISI 306
3	Rod seal	Polyurethane
4	Front cover	Steel AISI 304
5	Nut	Steel AISI 304
6	Bearing	Sintered bronze
7	O-ring seals	Nitrile
8	Bumper	Neoprene
9	Piston	Brass
10	Piston seal	Polyurethane
11	Magnet	Plastoferrite
12	Mini cylinder shape body	Steel AISI 304
13	Back cover	Steel AISI 304



Double Acting Magnetic



KASS...

Ø mm	A	A1	B	C	D	E	F	G	K	L	M	N	P	R	CH
16	M6	6	M16 x 1.5	12	19	6	18	M5	22	16	109	9	53	82	5
20	M8	8	M22 x 1.5	16	27	8	20	1/8G	24	20	131	12	67	95	7
25	M10 x 1.25	10	M22 x 1.5	16	30	8	22	1/8G	28	22	140	12	68	104	9

Stainless Steel ISO 6432 Mini Cylinders

Full stainless steel double acting, magnetic, bumper cushioned cylinders.

Available in:

Bore sizes: 16, 20 and 25mm

Stroke lengths: 10, 25, 50, 80, 100, 125, 160, 200, 250 and 320mm

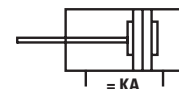
Intermediate strokes are available upon request, please contact our Business Development Team.

Suitable for all industrial fields, but particularly suitable for use in corrosive environments.



Working Temperature:
0°C to +80°C

Operating Pressure:
2-10 bar



stainless steel

Magnetic Double Acting

0333	Bore mm	Stroke mm	Thread	Locknut Thread	Piston Rod Thread
KASS-16X10-S-CA	16	10	M5	M16 x 1.5	M6
KASS-16X25-S-CA	16	25	M5	M16 x 1.5	M6
KASS-16X50-S-CA	16	50	M5	M16 x 1.5	M6
KASS-16X80-S-CA	16	80	M5	M16 x 1.5	M6
KASS-16X100-S-CA	16	100	M5	M16 x 1.5	M6
KASS-16X125-S-CA	16	125	M5	M16 x 1.5	M6
KASS-16X160-S-CA	16	160	M5	M16 x 1.5	M6
KASS-16X200-S-CA	16	200	M5	M16 x 1.5	M6
KASS-16X250-S-CA	16	250	M5	M16 x 1.5	M6
KASS-16X320-S-CA	16	320	M5	M16 x 1.5	M6
KASS-20X10-S-CA	20	10	1/8"	M22 x 1.5	M8
KASS-20X25-S-CA	20	25	1/8"	M22 x 1.5	M8
KASS-20X50-S-CA	20	50	1/8"	M22 x 1.5	M8
KASS-20X80-S-CA	20	80	1/8"	M22 x 1.5	M8
KASS-20X100-S-CA	20	100	1/8"	M22 x 1.5	M8
KASS-20X125-S-CA	20	125	1/8"	M22 x 1.5	M8
KASS-20X160-S-CA	20	160	1/8"	M22 x 1.5	M8
KASS-20X200-S-CA	20	200	1/8"	M22 x 1.5	M8
KASS-20X250-S-CA	20	250	1/8"	M22 x 1.5	M8
KASS-20X320-S-CA	20	320	1/8"	M22 x 1.5	M8
KASS-25X10-S-CA	25	10	1/8"	M22 x 1.5	M10 x 1.25
KASS-25X25-S-CA	25	25	1/8"	M22 x 1.5	M10 x 1.25
KASS-25X50-S-CA	25	50	1/8"	M22 x 1.5	M10 x 1.25
KASS-25X80-S-CA	25	80	1/8"	M22 x 1.5	M10 x 1.25
KASS-25X100-S-CA	25	100	1/8"	M22 x 1.5	M10 x 1.25
KASS-25X125-S-CA	25	125	1/8"	M22 x 1.5	M10 x 1.25
KASS-25X160-S-CA	25	160	1/8"	M22 x 1.5	M10 x 1.25
KASS-25X200-S-CA	25	200	1/8"	M22 x 1.5	M10 x 1.25
KASS-25X250-S-CA	25	250	1/8"	M22 x 1.5	M10 x 1.25
KASS-25X320-S-CA	25	320	1/8"	M22 x 1.5	M10 x 1.25

Tech Sheet 10287



PNEUMATIC CYLINDERS

Stainless Steel ISO 6432 Mountings

stainless steel



Front Flange Mounting FA

0333	Bore mm
F-KASS16FA	16
F-KASS20FA	20/25

stainless steel



Foot Mounting LB, (single)

0333	Bore mm
F-KASS16LB	16
F-KASS20LB	20/25

stainless steel



Rear Hinge Mounting SDB

0333	Bore mm
F-KASS16SDB	16
F-KASS20SDB	20/25

stainless steel



Piston Rod Clevis Y

0333	Bore mm	Thread
F-KASS16Y	16	M6 x 1
F-KASS20Y	20	M8 x 1.25
F-KASS25Y	25	M10 x 1.25

stainless steel



Lock Nut

0333	Bore mm	Thread
F-KASS16LN	16	M16 x 1.5
F-KASS20LN	20/25	M22 x 1.5

stainless steel



Piston Rod Lock Nut

0333	Bore mm	Thread
F-KASS16PLN	16	M6
F-KASS20PLN	20	M8
F-KASS25PLN	25	M10 x 1.25

Reed Switches



Two Wire, N/O with LED

0333	Voltage
KRS-2.5	5-240V AC/DC


Reed Switch Mounting Brackets



0333	Bore mm
RSMC16	16
RSMC20	20
RSMC25	25



FESTO



Simply: part of the solution

The Festo ★ Core Range

The benefits at a glance:

- Over 2200 products in the range
- Fast delivery
- Attractively priced

Core Range for automation

The Festo Core Range is our selection of the most important products and functions that solve the majority of your automation tasks.

Simplify your procurements -
Just look for the blue star!



CYLINDERS

For the full range and more information, please contact one of our sales team.

DSNU ROUND CYLINDER CETOP RP 52 P ISO 6432



Features



Product Description

DSNU

Cylinder
Type

- **16** -

Bore Size
mm

- **100** -

Stroke Size
mm

- **PPS** -

Cushioning
PPS - Self adjusting
P - Polymer
PPV - Adjustable

- **A**

Magnetic



Double Acting, Elastic Polymer Cushioning Rings

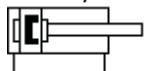
- Diameter 12-25mm: ISO 6432
- For very high demands on running characteristics, service life and load capacity
- Stainless Steel piston rod
- Comprehensive range of accessories

See page 468 for sensor mounts and sensors

Ambient Temperature:
-20°C to +80°C

Working Pressure:
1.5 to 10 bar (12mm Piston)
1 to 10 bar (Piston: 16, 20, 25)

Elastic Polymer Cushioning



Polymer, Magnetic

0009	Piston Diameter mm	Stroke mm	Piston Rod Thread	Manufacturer's Code
19189	12	10	M6	DSNU-12-10-P-A
1908255	12	15	M6	DSNU-12-15-P-A
1908256	12	20	M6	DSNU-12-20-P-A
19190	12	25	M6	DSNU-12-25-P-A
1908257	12	30	M6	DSNU-12-30-P-A
19191	12	40	M6	DSNU-12-40-P-A
19192	12	50	M6	DSNU-12-50-P-A
1908258	12	60	M6	DSNU-12-60-P-A
19193	12	80	M6	DSNU-12-80-P-A
19194	12	100	M6	DSNU-12-100-P-A
19195	12	125	M6	DSNU-12-125-P-A
19196	12	160	M6	DSNU-12-160-P-A
19197	12	200	M6	DSNU-12-200-P-A
19198	16	10	M6	DSNU-16-10-P-A
1908259	16	15	M6	DSNU-16-15-P-A
1908260	16	20	M6	DSNU-16-20-P-A
19199	16	25	M6	DSNU-16-25-P-A
1908261	16	30	M6	DSNU-16-30-P-A
1908262	16	35	M6	DSNU-16-35-P-A
19200	16	40	M6	DSNU-16-40-P-A
19201	16	50	M6	DSNU-16-50-P-A
1908263	16	60	M6	DSNU-16-60-P-A
1908264	16	70	M6	DSNU-16-70-P-A
19202	16	80	M6	DSNU-16-80-P-A
19203	16	100	M6	DSNU-16-100-P-A
19204	16	125	M6	DSNU-16-125-P-A
1908265	16	150	M6	DSNU-16-150-P-A
19205	16	160	M6	DSNU-16-160-P-A
19206	16	200	M6	DSNU-16-200-P-A

Tech Sheet 70225

Polymer, Magnetic

0009	Piston Diameter mm	Stroke mm	Piston Rod Thread	Manufacturer's Code
19207	20	10	M8	DSNU-20-10-P-A
1908282	20	15	M8	DSNU-20-15-P-A
1908283	20	20	M8	DSNU-20-20-P-A
19208	20	25	M8	DSNU-20-25-P-A
1908284	20	30	M8	DSNU-20-30-P-A
1908285	20	35	M8	DSNU-20-35-P-A
19209	20	40	M8	DSNU-20-40-P-A
19210	20	50	M8	DSNU-20-50-P-A
1908286	20	60	M8	DSNU-20-60-P-A
1908287	20	70	M8	DSNU-20-70-P-A
19211	20	80	M8	DSNU-20-80-P-A
19212	20	100	M8	DSNU-20-100-P-A
19213	20	125	M8	DSNU-20-125-P-A
1908288	20	150	M8	DSNU-20-150-P-A
19214	20	160	M8	DSNU-20-160-P-A
19215	20	200	M8	DSNU-20-200-P-A
19216	20	250	M8	DSNU-20-250-P-A
19217	20	300	M8	DSNU-20-300-P-A
34718	20	320	M8	DSNU-20-320-P-A
19218	25	10	M10 x 1.25	DSNU-25-10-P-A
1908305	25	15	M10 x 1.25	DSNU-25-15-P-A
1908306	25	20	M10 x 1.25	DSNU-25-20-P-A
19219	25	25	M10 x 1.25	DSNU-25-25-P-A
1908307	25	30	M10 x 1.25	DSNU-25-30-P-A
1908308	25	35	M10 x 1.25	DSNU-25-35-P-A
19220	25	40	M10 x 1.25	DSNU-25-40-P-A
19221	25	50	M10 x 1.25	DSNU-25-50-P-A
1908309	25	60	M10 x 1.25	DSNU-25-60-P-A
1908310	25	70	M10 x 1.25	DSNU-25-70-P-A
19222	25	80	M10 x 1.25	DSNU-25-80-P-A
19223	25	100	M10 x 1.25	DSNU-25-100-P-A
19224	25	125	M10 x 1.25	DSNU-25-125-P-A
1908311	25	150	M10 x 1.25	DSNU-25-150-P-A
19225	25	160	M10 x 1.25	DSNU-25-160-P-A
19226	25	200	M10 x 1.25	DSNU-25-200-P-A
19227	25	250	M10 x 1.25	DSNU-25-250-P-A
19228	25	300	M10 x 1.25	DSNU-25-300-P-A
34719	25	320	M10 x 1.25	DSNU-25-320-P-A

Tech Sheet 70226

DIN ISO 6432 ROUND CYLINDERS, DSNU

FESTO



Double Acting, Adjustable Pneumatic Cushioning

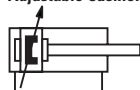
- Diameter 16-25mm: ISO 6432
- For very high demands on running characteristics, service life and load capacity
- Stainless Steel piston rod
- Comprehensive range of accessories

See page 468 for sensor mounts and sensors

 Ambient Temperature:
-20°C to +80°C

 Working Pressure:
1 to 10 bar

Adjustable Cushioning



Magnetic

0009	Piston Diameter mm	Stroke mm	Piston Rod Thread	Manufacturer's Code
1908266	16	10	M6	DSNU-16-10-PPV-A
1908267	16	15	M6	DSNU-16-15-PPV-A
1908268	16	20	M6	DSNU-16-20-PPV-A
33973	16	25	M6	DSNU-16-25-PPV-A
1908269	16	30	M6	DSNU-16-30-PPV-A
1908270	16	35	M6	DSNU-16-35-PPV-A
19229	16	40	M6	DSNU-16-40-PPV-A
19230	16	50	M6	DSNU-16-50-PPV-A
1908271	16	60	M6	DSNU-16-60-PPV-A
1908272	16	70	M6	DSNU-16-70-PPV-A
19231	16	80	M6	DSNU-16-80-PPV-A
19232	16	100	M6	DSNU-16-100-PPV-A
19233	16	125	M6	DSNU-16-125-PPV-A
1908273	16	150	M6	DSNU-16-150-PPV-A
19234	16	160	M6	DSNU-16-160-PPV-A
19235	16	200	M6	DSNU-16-200-PPV-A

Tech Sheet 70229

Magnetic

0009	Piston Diameter mm	Stroke mm	Piston Rod Thread	Manufacturer's Code
1908289	20	10	M8	DSNU-20-10-PPV-A
1908290	20	15	M8	DSNU-20-15-PPV-A
1908291	20	20	M8	DSNU-20-20-PPV-A
33974	20	25	M8	DSNU-20-25-PPV-A
1908292	20	30	M8	DSNU-20-30-PPV-A
1908293	20	35	M8	DSNU-20-35-PPV-A
19236	20	40	M8	DSNU-20-40-PPV-A
19237	20	50	M8	DSNU-20-50-PPV-A
1908294	20	60	M8	DSNU-20-60-PPV-A
1908295	20	70	M8	DSNU-20-70-PPV-A
19238	20	80	M8	DSNU-20-80-PPV-A
19239	20	100	M8	DSNU-20-100-PPV-A
19240	20	125	M8	DSNU-20-125-PPV-A
1908296	20	150	M8	DSNU-20-150-PPV-A
19241	20	160	M8	DSNU-20-160-PPV-A
19242	20	200	M8	DSNU-20-200-PPV-A
19243	20	250	M8	DSNU-20-250-PPV-A
19244	20	300	M8	DSNU-20-300-PPV-A
34720	20	320	M8	DSNU-20-320-PPV-A
1908312	25	10	M10 x 1.25	DSNU-25-10-PPV-A
1908313	25	15	M10 x 1.25	DSNU-25-15-PPV-A
1908314	25	20	M10 x 1.25	DSNU-25-20-PPV-A
33975	25	25	M10 x 1.25	DSNU-25-25-PPV-A
1908315	25	30	M10 x 1.25	DSNU-25-30-PPV-A
1908316	25	35	M10 x 1.25	DSNU-25-35-PPV-A
19245	25	40	M10 x 1.25	DSNU-25-40-PPV-A
19246	25	50	M10 x 1.25	DSNU-25-50-PPV-A
1908317	25	60	M10 x 1.25	DSNU-25-60-PPV-A
1908318	25	70	M10 x 1.25	DSNU-25-70-PPV-A
19247	25	80	M10 x 1.25	DSNU-25-80-PPV-A
19248	25	100	M10 x 1.25	DSNU-25-100-PPV-A
19249	25	125	M10 x 1.25	DSNU-25-125-PPV-A
1908319	25	150	M10 x 1.25	DSNU-25-150-PPV-A
19250	25	160	M10 x 1.25	DSNU-25-160-PPV-A
19251	25	200	M10 x 1.25	DSNU-25-200-PPV-A
19252	25	250	M10 x 1.25	DSNU-25-250-PPV-A
19253	25	300	M10 x 1.25	DSNU-25-300-PPV-A
34721	25	320	M10 x 1.25	DSNU-25-320-PPV-A

Tech Sheet 70230

FESTO

new
product



For Festo Tube Regulators
see page 814

DIN ISO 6432 ROUND CYLINDERS, DSNU

FESTO

Double Acting, Self-adjusting Pneumatic Cushioning



- Diameter 16-25mm: ISO 6432
- For very high demands on running characteristics, service life and load capacity
- Stainless Steel piston rod
- Comprehensive range of accessories

See page 468 for sensor mounts and sensors

Ambient Temperature:
-20°C to +80°C

Working Pressure:
1 to 10 bar

Self-adjusting Cushioning



Magnetic

0009	Piston Diameter mm	Stroke mm	Piston Rod Thread	Manufacturer's Code
1908274	16	10	M6	DSNU-16-10-PPS-A
1908275	16	15	M6	DSNU-16-15-PPS-A
1908276	16	20	M6	DSNU-16-20-PPS-A
559263	16	25	M6	DSNU-16-25-PPS-A
1908277	16	30	M6	DSNU-16-30-PPS-A
1908278	16	35	M6	DSNU-16-35-PPS-A
559264	16	40	M6	DSNU-16-40-PPS-A
559265	16	50	M6	DSNU-16-50-PPS-A
1908279	16	60	M6	DSNU-16-60-PPS-A
1908280	16	70	M6	DSNU-16-70-PPS-A
559266	16	80	M6	DSNU-16-80-PPS-A
559267	16	100	M6	DSNU-16-100-PPS-A
559268	16	125	M6	DSNU-16-125-PPS-A
1908281	16	150	M6	DSNU-16-150-PPS-A
559269	16	160	M6	DSNU-16-160-PPS-A
559270	16	200	M6	DSNU-16-200-PPS-A

Tech Sheet 70231

Magnetic

0009	Piston Diameter mm	Stroke mm	Piston Rod Thread	Manufacturer's Code
1908297	20	10	M8	DSNU-20-10-PPS-A
1908298	20	15	M8	DSNU-20-15-PPS-A
1908299	20	20	M8	DSNU-20-20-PPS-A
559271	20	25	M8	DSNU-20-25-PPS-A
1908300	20	30	M8	DSNU-20-30-PPS-A
1908301	20	35	M8	DSNU-20-35-PPS-A
559272	20	40	M8	DSNU-20-40-PPS-A
559273	20	50	M8	DSNU-20-50-PPS-A
1908302	20	60	M8	DSNU-20-60-PPS-A
1908303	20	70	M8	DSNU-20-70-PPS-A
559274	20	80	M8	DSNU-20-80-PPS-A
559275	20	100	M8	DSNU-20-100-PPS-A
559276	20	125	M8	DSNU-20-125-PPS-A
1908304	20	150	M8	DSNU-20-150-PPS-A
559277	20	160	M8	DSNU-20-160-PPS-A
559278	20	200	M8	DSNU-20-200-PPS-A
559279	20	250	M8	DSNU-20-250-PPS-A
559280	20	300	M8	DSNU-20-300-PPS-A
559281	20	320	M8	DSNU-20-320-PPS-A
1908320	25	10	M10 x 1.25	DSNU-25-10-PPS-A
1908321	25	15	M10 x 1.25	DSNU-25-15-PPS-A
1908322	25	20	M10 x 1.25	DSNU-25-20-PPS-A
559282	25	25	M10 x 1.25	DSNU-25-25-PPS-A
1908323	25	30	M10 x 1.25	DSNU-25-30-PPS-A
1908324	25	35	M10 x 1.25	DSNU-25-35-PPS-A
559283	25	40	M10 x 1.25	DSNU-25-40-PPS-A
559284	25	50	M10 x 1.25	DSNU-25-50-PPS-A
1908325	25	60	M10 x 1.25	DSNU-25-60-PPS-A
1908326	25	70	M10 x 1.25	DSNU-25-70-PPS-A
559285	25	80	M10 x 1.25	DSNU-25-80-PPS-A
559286	25	100	M10 x 1.25	DSNU-25-100-PPS-A
559287	25	125	M10 x 1.25	DSNU-25-125-PPS-A
1908327	25	150	M10 x 1.25	DSNU-25-150-PPS-A
559288	25	160	M10 x 1.25	DSNU-25-160-PPS-A
559289	25	200	M10 x 1.25	DSNU-25-200-PPS-A
559290	25	250	M10 x 1.25	DSNU-25-250-PPS-A
559291	25	300	M10 x 1.25	DSNU-25-300-PPS-A
559292	25	320	M10 x 1.25	DSNU-25-320-PPS-A

Tech Sheet 70232

FESTO

new product



For Festo Differential Pressure Regulators see page 816

ROUND CYLINDERS, DSNU-S


FESTO




Compact Double Acting, Elastic Polymer Cushioning Rings

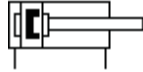
- Compact variant of standards-based cylinder DSNU
- Diameter 12-25mm
- Space saving

See page 468 for sensor mounts and sensors

 Ambient Temperature:
-20°C to +80°C

 Working Pressure:
1 to 10 bar

Elastic Polymer Cushioning



Magnetic

0009	Piston Diameter mm	Stroke mm	Piston Rod Thread	Manufacturer's Code
5211896	12	10	M6	DSNU-S-12-10-P-A
5211897	12	15	M6	DSNU-S-12-15-P-A
5211898	12	20	M6	DSNU-S-12-20-P-A
5211899	12	25	M6	DSNU-S-12-25-P-A
5211900	12	30	M6	DSNU-S-12-30-P-A
5211901	12	40	M6	DSNU-S-12-40-P-A
5211903	12	50	M6	DSNU-S-12-50-P-A
5211904	12	60	M6	DSNU-S-12-60-P-A
5211905	12	80	M6	DSNU-S-12-80-P-A
5211906	12	100	M6	DSNU-S-12-100-P-A
5211908	12	125	M6	DSNU-S-12-125-P-A
5211909	12	150	M6	DSNU-S-12-150-P-A
5216087	16	10	M6	DSNU-S-16-10-P-A
5216088	16	15	M6	DSNU-S-16-15-P-A
5216089	16	20	M6	DSNU-S-16-20-P-A
5216090	16	25	M6	DSNU-S-16-25-P-A
5216091	16	30	M6	DSNU-S-16-30-P-A
5216093	16	40	M6	DSNU-S-16-40-P-A
5216094	16	50	M6	DSNU-S-16-50-P-A
5216095	16	60	M6	DSNU-S-16-60-P-A
5216096	16	80	M6	DSNU-S-16-80-P-A
5216098	16	100	M6	DSNU-S-16-100-P-A
5216099	16	125	M6	DSNU-S-16-125-P-A
5216100	16	150	M6	DSNU-S-16-150-P-A
5216101	16	200	M6	DSNU-S-16-200-P-A

Tech Sheet 70227

Magnetic

0009	Piston Diameter mm	Stroke mm	Piston Rod Thread	Manufacturer's Code
5224633	20	10	M8	DSNU-S-20-10-P-A
5224634	20	15	M8	DSNU-S-20-15-P-A
5224635	20	20	M8	DSNU-S-20-20-P-A
5224636	20	25	M8	DSNU-S-20-25-P-A
5224637	20	30	M8	DSNU-S-20-30-P-A
5224639	20	40	M8	DSNU-S-20-40-P-A
5224641	20	50	M8	DSNU-S-20-50-P-A
5224642	20	60	M8	DSNU-S-20-60-P-A
5224643	20	80	M8	DSNU-S-20-80-P-A
5224644	20	100	M8	DSNU-S-20-100-P-A
5224645	20	125	M8	DSNU-S-20-125-P-A
5224646	20	150	M8	DSNU-S-20-150-P-A
5224647	20	200	M8	DSNU-S-20-200-P-A
5228227	25	10	M8	DSNU-S-25-10-P-A
5228228	25	15	M8	DSNU-S-25-15-P-A
5228229	25	20	M8	DSNU-S-25-20-P-A
5228230	25	25	M8	DSNU-S-25-25-P-A
5228231	25	30	M8	DSNU-S-25-30-P-A
5228232	25	40	M8	DSNU-S-25-40-P-A
5228233	25	50	M8	DSNU-S-25-50-P-A
5228234	25	60	M8	DSNU-S-25-60-P-A
5228235	25	80	M8	DSNU-S-25-80-P-A
5228236	25	100	M8	DSNU-S-25-100-P-A
5228237	25	125	M8	DSNU-S-25-125-P-A
5228238	25	150	M8	DSNU-S-25-150-P-A
5228239	25	200	M8	DSNU-S-25-200-P-A

Tech Sheet 70228

ROUND CYLINDERS, DSNU-S

FESTO

Compact Double Acting, Self-adjusting Pneumatic Cushioning



- Compact variant of standards-based cylinder DSNU
- Diameter 16-25mm
- Space saving

See page 468 for sensor mounts and sensors

Ambient Temperature:
-20°C to +80°C

Working Pressure:
1 to 10 bar

Self-adjusting Cushioning



Magnetic

0009	Piston Diameter mm	Stroke mm	Piston Rod Thread	Manufacturer's Code
5217238	16	25	M6	DSNU-S-16-25-PPS-A
5217239	16	30	M6	DSNU-S-16-30-PPS-A
5217240	16	40	M6	DSNU-S-16-40-PPS-A
5217241	16	50	M6	DSNU-S-16-50-PPS-A
5217242	16	60	M6	DSNU-S-16-60-PPS-A
5217243	16	80	M6	DSNU-S-16-80-PPS-A
5217244	16	100	M6	DSNU-S-16-100-PPS-A
5217245	16	125	M6	DSNU-S-16-125-PPS-A
5217246	16	150	M6	DSNU-S-16-150-PPS-A
5217248	16	200	M6	DSNU-S-16-200-PPS-A

Tech Sheet 70233

Magnetic

0009	Piston Diameter mm	Stroke mm	Piston Rod Thread	Manufacturer's Code
5225836	20	25	M8	DSNU-S-20-25-PPS-A
5225837	20	30	M8	DSNU-S-20-30-PPS-A
5225838	20	40	M8	DSNU-S-20-40-PPS-A
5225839	20	50	M8	DSNU-S-20-50-PPS-A
5225840	20	60	M8	DSNU-S-20-60-PPS-A
5225841	20	80	M8	DSNU-S-20-80-PPS-A
5225842	20	100	M8	DSNU-S-20-100-PPS-A
5225843	20	125	M8	DSNU-S-20-125-PPS-A
5225844	20	150	M8	DSNU-S-20-150-PPS-A
5225846	20	200	M8	DSNU-S-20-200-PPS-A
5228452	25	25	M8	DSNU-S-25-25-PPS-A
5228453	25	30	M8	DSNU-S-25-30-PPS-A
5228454	25	40	M8	DSNU-S-25-40-PPS-A
5228455	25	50	M8	DSNU-S-25-50-PPS-A
5228456	25	60	M8	DSNU-S-25-60-PPS-A
5228457	25	80	M8	DSNU-S-25-80-PPS-A
5228458	25	100	M8	DSNU-S-25-100-PPS-A
5228459	25	125	M8	DSNU-S-25-125-PPS-A
5228460	25	150	M8	DSNU-S-25-150-PPS-A
5228461	25	200	M8	DSNU-S-25-200-PPS-A

Tech Sheet 70234

FESTO



For **Festo Air Prep MS Series**
see pages 657-662

CYLINDER ATTACHMENTS & ACCESSORIES

FESTO


Mounting Components for Drive Units



**Foot Mounting, ISO 6432, Version S1,
For DSNU Standard Cylinder**

0009	To Suit Bore mm	Quantity	Manufacturer's Code
5125	12/16	1	HBN-12/16X1
5126	12/16	2	HBN-12/16X2
5127	20/25	1	HBN-20/25X1
5128	20/25	2	HBN-20/25X2

Tech Sheet 70217



**Foot Mounting, ISO 6432, Version S3,
For DSNU-S Space Saving Cylinder**

0009	To Suit Bore mm	Quantity	Manufacturer's Code
5407772	12/16	1	HBN-S-12/16X1
5407787	20/25	1	HBN-S-20/25X1
5407847	20/25	2	HBN-S-20/25X2

Tech Sheet 70218



Clevis Foot Swivel Mounting, ISO 6432

0009	To Suit Bore mm	Manufacturer's Code
6058	12/16	LBN-12/16
6059	20/25	LBN-20/25

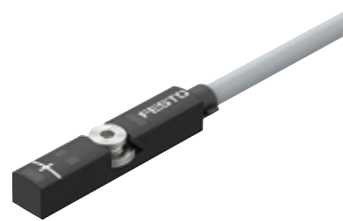
Tech Sheet 70216

Mounting Components for Sensors



SMBR, Clip Mounting Kits

0009	Type
175091	SMBR-8
175092	SMBR-8-10
175093	SMBR-8-12
175094	SMBR-8-16
175095	SMBR-8-20
175096	SMBR-8-25
175097	SMBR-8-32
175098	SMBR-8-40
175099	SMBR-8-50
175100	SMBR-8-63



**Proximity Sensors For T-Slot,
Non-contacting**

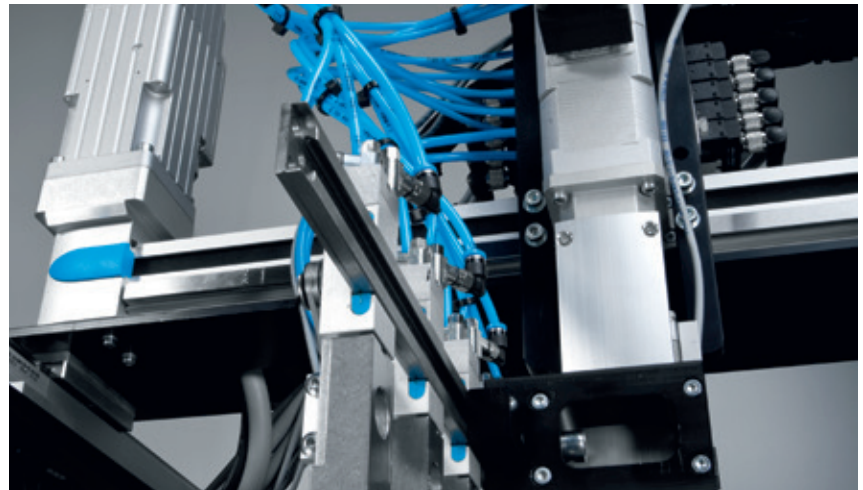
0009	Type N/O Contact
574334	SMT-8M-A-PS-24V-E-0.3-M8D (PNP)
574339	SMT-8M-A-NS-24V-E-0.3-M8D (NPN)



Cable Type NEBU

0009	Designation
541334	Connecting cable

T Slot

C Slot


ISO 6432 MINI CYLINDERS

ISO 6432 Single Acting Cylinders

Technical Data for all ISO 6432 Cylinders

° Temperature Range:
10°C to +80°C

Maximum Operating Pressure:
10 bar

• Fluid: lubricated or unlubricated air
• Inrush pressure: Ø10-12 = 0.8 bar, Ø16-25 = 0.6 bar

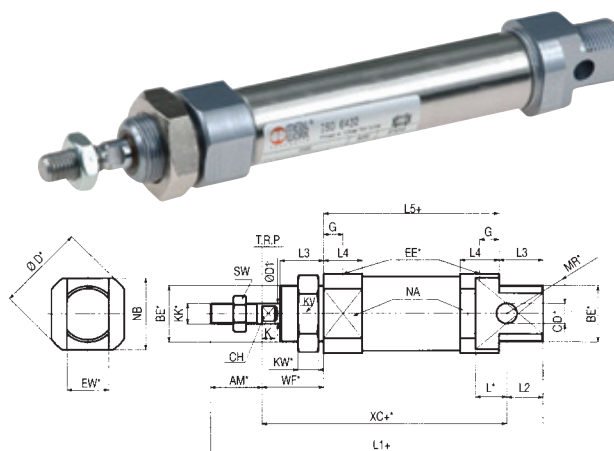
• Forces generated at 6 bar thrust/retraction:
Ø16: 108N/95N, Ø20: 169N/148N, Ø25: 265N/228N

Dimensions

Ø	AM	BE	ØCD	ØD	ØD1	G	EE	EW	L	L1	L2	L3	L4	L5	KK	XC	WF	KW	KV	MR	NA	NB	SW	CH	K
10	12	M12 x 1.25	4	17	4	6	M5	8	6	86	10	12	10	46	M4	64	16	7	19	12	15	15	7	3	3
12	16	M16 x 1.5	6	19	6	6	M5	12	9	104	13	17	10	49	M6	75	22	8	24	16	17	17	10	5	3
16	16	M16 x 1.5	6	23	6	6	M5	12	9	111	13	17	10	56	M6	82	22	8	24	16	20	20	10	5	3.5
20	20	M22 x 1.5	8	34	8	8	G1/8	16	12	129	14	17	15	68	M8	95	24	10	32	18	28	28	13	7	4.6
25	22	M22 x 1.5	8	34	10	9	G1/8	16	12	143	17	20	18	73	M10 x 1.25	104	28	10	32	21	30	30	17	8	5

Non-magnetic

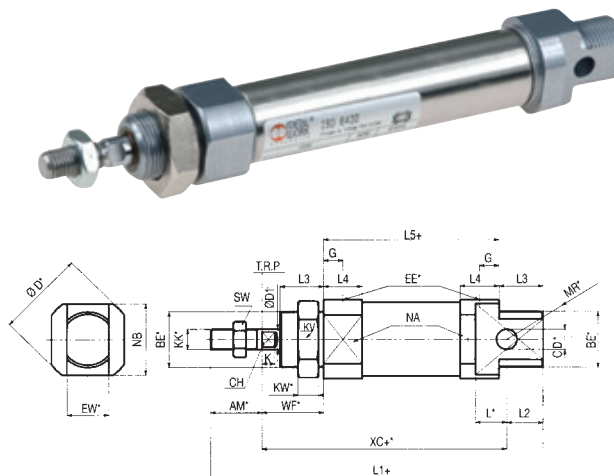
9146	Diameter mm	Stroke mm
1110100010XN	10	10
1110100025XN	10	25
1110100050XN	10	50
1110120010CN	12	10
1110120025CN	12	25
1110120050CN	12	50
1110160010CN	16	10
1110160025CN	16	25
1110160050CN	16	50
1110200010CN	20	10
1110200025CN	20	25
1110200050CN	20	50
1110250010CN	25	10
1110250025CN	25	25
1110250050CN	25	50



ISO 6432 Double Acting Cylinders

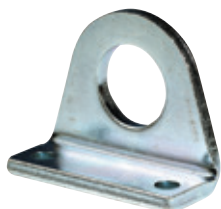
Magnetic

9146	Diameter mm	Stroke mm
1120160010CN	16	10
1120160025CN	16	25
1120160050CN	16	50
1120160080CN	16	80
1120160100CN	16	100
1120160125CN	16	125
1120160160CN	16	160
1120160200CN	16	200
1120200010CN	20	10
1120200025CN	20	25
1120200050CN	20	50
1120200080CN	20	80
1120200100CN	20	100
1120200125CN	20	125
1120200160CN	20	160
1120200200CN	20	200
1120200250CN	20	250
1120250010CN	25	10
1120250025CN	25	25
1120250050CN	25	50
1120250080CN	25	80
1120250100CN	25	100
1120250125CN	25	125
1120250160CN	25	160
1120250200CN	25	200
1120250250CN	25	250
1120250320CN	25	320



ISO 6432 MINI CYLINDERS ACCESSORIES

Foot Mounting



To suit ISO 6432 Cylinders

9146	To Suit Size mm
W0950080001	10
W0950120001	12-16
W0950200001	20-25

Flange Mounting



To suit ISO 6432 Cylinders

9146	To Suit Size mm
W0950080002	10
W0950120002	12-16
W0950200002	20-25

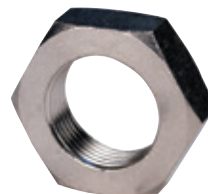
Counter Support



To suit ISO 6432 Cylinders

9146	To Suit Size mm
W0950080005	10
W0950120005	12-16
W0950200005	20-25

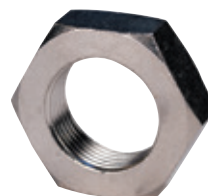
Cylinder Head Nut



To suit ISO 6432 Cylinders

9146	To Suit Size mm	Thread
W0950080010	10	M12 x 1.25
W0950120010	16	M16 x 1.5
W0950200010	25	M22 x 1.5

Piston Rod Nut



To suit ISO 6432 Cylinders

9146	To Suit Size mm	Thread
W0950080011	10	M4
W0950120011	16	M6
W0950200011	20	M8
W0950322010	25	M10 x 1.25

Fork Clevis



To suit ISO 6432 Cylinders

9146	To Suit Size mm	Thread
W0950080020	10	M4
W0950120020	12-16	M6
W0950200020	20	M8
W0950322020	25	M10 x 1.25

Spherical Rod Eye



To suit ISO 6432 Cylinders

9146	To Suit Size mm	Thread
W0950080025	10	M4
W0950120025	12-16	M6
W0950200025	20	M8
W0950322025	25	M10 x 1.25

Reed Switch & Bracket



To suit ISO 6432 Cylinders

9146	Description/To Suit
W0950000201	Reed Switch
W0950000510	10
W0950000512	12
W0950000516	16
W0950000520	20
W0950000525	25

ISO 6432 MINI AIR CYLINDERS, ALL STAINLESS STEEL

ISO 6432 Mini Cylinders, Double Acting

Technical Specification

- ISO 6432 stainless steel micro-cylinders are available in various versions with a wide range of accessories
- With or without magnet execution
- Double-acting, single or through-rod
- Gaskets: polyurethane or FKM/FPM (for high temperatures)
- Fixing accessories

Fluid

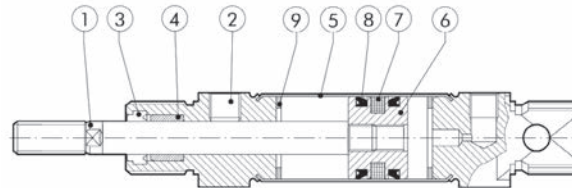
Lubricated or non-lubricated air

Temperature Range:
10°C to +80°C

Maximum Operating Pressure:
10 bar



- | | |
|-----------------------------------------------|-------------------------------------------|
| 1. Piston rod: AISI 316 steel | 7. Piston gasket: polyurethane or FKM/FPM |
| 2. Head: AISI 304 steel | 8. Magnet: plastoferrite |
| 3. Piston rod gasket: polyurethane or FKM/FPM | 9. Static O-rings: NBR or FKM/FPM |
| 4. Guide bushing: sintered bronze | |
| 5. Barrel: AISI 304 steel | |
| 6. Piston: brass | |



Magnetic

9146	Ø mm	Stroke mm
W1800160010	16	10
W1800160025	16	25
W1800160050	16	50
W1800160080	16	80
W1800160100	16	100
W1800160125	16	125
W1800160160	16	160
W1800160200	16	200
W1800160250	16	250
W1800160320	16	320
W1800200010	20	10
W1800200025	20	25
W1800200050	20	50
W1800200080	20	80
W1800200100	20	100
W1800200125	20	125
W1800200160	20	160

9146	Ø mm	Stroke mm
W1800200200	20	200
W1800200250	20	250
W1800200320	20	320
W1800200400	20	400
W1800250010	25	10
W1800250025	25	25
W1800250050	25	50
W1800250080	25	80
W1800250100	25	100
W1800250125	25	125
W1800250160	25	160
W1800250200	25	200
W1800250250	25	250
W1800250320	25	320
W1800250400	25	400
W1800250500	25	500

ISO 6432 MINI AIR CYLINDER ACCESSORIES, ALL STAINLESS STEEL

Foot Mountings



To suit ISO 6432 Mini Cylinders

9146	To Suit Size mm
W095X120001	16
W095X200001	20/25

Female Hinges



To suit ISO 6432 Mini Cylinders

9146	To Suit Size mm
W095X120005	16
W095X200005	20/25

Rod Nuts



To suit ISO 6432 Mini Cylinders

9146	To Suit Size mm	Thread
W095X120011	16	M6 x 1
W095X200011	20	M8 x 1
W095X322011	25/32	M10 x 1.25

Cylinder Head Nuts



To suit ISO 6432 Mini Cylinders

9146	To Suit Size mm	Thread
W095X120010	16	M16 x 1.25
W095X200010	20/25	M22 x 1.5

Flange



To suit ISO 6432 Mini Cylinders

9146	Size to Suit mm
W095X120002	16
W095X200002	20/25

Fork Clevis



To suit ISO 6432 Cylinders

9146	To Suit Size mm	Thread
W095X120020	16	M6 x 1
W095X200020	20	M8 x 1
W095X322020	25/32	M10 x 1.25

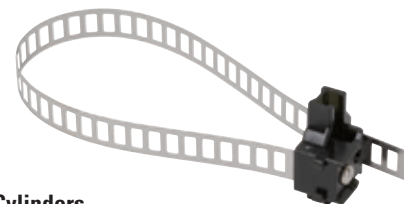
Reed Switch



To suit ISO 6432 Mini Cylinders

9146	Description
W0952028184	With M8 Connection

Mounting for Reed Switch



To suit ISO 6432 Mini Cylinders

9146	To Suit Size mm
W0950001103	8-63

We have access to **over 10,000 product lines available** via Norgren's European Distribution Centre. Contact our business development team with your Norgren requirements.

Norgren's extensive product range comprises of other leading brands including: **Pneufit, Herion, Buschjost, Martonair, Lintra, Excelon Plus and Fleetfit.**



VACUUM

Vacuum is most commonly used for picking and placing components in assembly automation systems. Generated from a compressed air supply, this can be controlled very simply in order to

perform most common tasks. The range includes a range of pumps, cups, switches and accessories; easily selected and applied.



PRESSURE SWITCHES

Pressure switches can be used to automatically monitor pressure levels in a compressed air system. They can however also be used for more complex monitoring functions in air, water or hydraulic applications.



ACTUATORS

Pneumatic actuators (sometimes called cylinders) are the product used to provide motion and force to industrial automation applications. Linear and rotary output, they are available in all manner of sizes and styles to suit most requirements.

Norgren has a long history of production of this kind of device – an early example of a pneumatic actuator was the original Martonair air hoist. They now include rodded, rodless, compact, roundline, guided and other ranges.



AIR PREPARATION

Correct air preparation is essential for best performance. Norgren has a great reputation in this area, and its ranges have been at the forefront of industry for many years.



VALVES

In industrial automation, valves can be as simple or complex as required. Norgren has many brand names associated with its valve ranges – Herion,

Buschjost, Walter, FAS, Webber, Watson Smith, Maxseal, Enots and Martonair.

ISO 6432 CYLINDERS & MOUNTINGS



ISO 6432 Cylinders

- Magnetic piston as standard
- Generally conforms to ISO 6432
- High strength, double crimped end cap design
- Corrosion resistant

Working Temperature:
-10°C to +80°C

Working Pressure:
2 to 10 bar

Standard:
ISO 6432

Buffer:
Polyurethane

Operation:
Single acting (sprung in),
magnetic piston, buffer cushioning

- Nose mounting nut and piston rod locknut as standard
 - Optional port arrangement for compact installation
- Medium:**
Compressed air, filtered, lubricated or non-lubricated

Barrel:
Stainless steel
(austenitic)

Piston Rod:
Stainless steel
(austenitic)

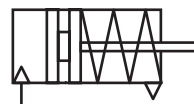
Seals:
Nitrile rubber

End Covers:
Clear anodised
aluminium alloy

Single Acting RM/28000/M

0036	Bore mm	Stroke mm	Thread
RM/28010/M/10	10	10	M5
RM/28010/M/25	10	25	M5
RM/28010/M/50	10	50	M5
RM/28020/M/10	20	10	G1/8
RM/28020/M/25	20	25	G1/8
RM/28020/M/50	20	50	G1/8
RM/28025/M/10	25	10	G1/8
RM/28025/M/25	25	25	G1/8
RM/28025/M/50	25	50	G1/8

Tech Sheet 10316



Working Temperature:
-10°C to +80°C

Working Pressure:
1 to 10 bar

Medium:
Compressed air, filtered,
lubricated or non-lubricated

Standard:
ISO 6432

Buffer:
Polyurethane

Operation:
Double acting, magnetic
piston with buffer or
adjustable cushioning

Barrel:
Stainless steel
(austenitic)

Piston Rod:
Stainless steel
(austenitic)

Wiper:
Polyurethane

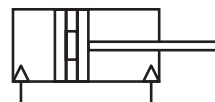
Seals:
Nitrile rubber

End Covers:
Clear anodised
aluminium alloy

Double Acting RM/8000/M

0036	Bore mm	Stroke mm	Thread
RM/8010/M/25	10	25	M5
RM/8010/M/50	10	50	M5
RM/8010/M/80	10	80	M5
RM/8010/M/100	10	100	M5
RM/8012/M/25	12	25	M5
RM/8012/M/50	12	50	M5
RM/8016/M/25	16	25	M5
RM/8016/M/50	16	50	M5
RM/8016/M/100	16	100	M5
RM/8020/M/25	20	25	G1/8
RM/8020/M/50	20	50	G1/8
RM/8020/M/80	20	80	G1/8
RM/8020/M/100	20	100	G1/8
RM/8025/M/25	25	25	G1/8
RM/8025/M/50	25	50	G1/8
RM/8025/M/80	25	80	G1/8
RM/8025/M/100	25	100	G1/8

Tech Sheet 10316



ISO 6432 Mountings



Female Piston Rod Clevis

0036	Bore mm
QM/8010/25	10
QM/8012/25	12 & 16
QM/8020/25	20
QM/8025/25	25

Tech Sheet 10316



Piston Rod Eye

0036	Bore mm
QM/8010/32	10
QM/8012/32	12 & 16
QM/8020/32	20
QM/8025/32	25

Tech Sheet 10316



Clevis Foot Mounting

0036	Bore mm
QM/947	10
QM/8012/24	12 & 16
QM/8020/24	20 & 25

Tech Sheet 10316

ISO 6432 CYLINDERS

Proximity Switches to suit Series 24, 32, 60 & 61



T Slot

0158	Description	Voltage
CST 220	2 Wire	10-110V AC/DC
CST 232	3 Wire	5-30V AC/DC
CST 332	Hall Effect, 3 Wire, PNP	27V DC

Tech Sheet 20084



T Slot, M8

0158	Description	Voltage
CST 250	2 Wire	10-110V AC/DC
CST 262	3 Wire	5-30V AC/DC
CST 362	Hall Effect, 3 Wire, PNP	27V DC

Tech Sheet 20084

Extension Lead

0158	Length Metres
GG08B3C25050	5

Tech Sheet 20084

Proximity Switch Brackets



Series 24

0158	OD mm
S-CST 02	16
S-CST 03	20
S-CST 04	25

Tech Sheet 20084



Series 60

0158	OD mm
S-CST 25	32-63
S-CST 26	80-100

Tech Sheet 20084

Series 24, Double Acting Cylinders

Single and double-acting
Standard CETOP RP52P DIN/ISO 6432
Stainless steel rod and tube
Anodized AL end-blocks

Type of construction: flanged

Operation: single-acting or double-acting

Materials: end-blocks = anodized AL, tube and rod = stainless steel, piston = AL, seals = NBR - PU, other parts = see coding

Brackets: screw, flange, feet, trunnion

Stroke min – max: Ø 16: 10 - 600 mm; Ø 20 - Ø 25: 10 - 1000 mm

Bores: Ø 16, 20, 25

Fluid: Filtered air, without lubrication. If lubricated air is used, it is recommended to use oil ISO VG32. Once applied the lubrication should never be interrupted.

Speed: 10 to 1000 mm/sec (without load)

° Operating temperature:
0°C to 80°C (with dry air -20°C)

⊖ Operating pressure:
1 to 10 bar (double-acting);
2 to 10 bar (single-acting)



M5, Ø16mm

0158	Stroke mm
24N2A16A010	10
24N2A16A025	25
24N2A16A040	40
24N2A16A050	50
24N2A16A080	80
24N2A16A100	100
24N2A16A125	125
24N2A16A160	160
24N2A16A200	200

Tech Sheet 1844

G1/8", Ø25mm

0158	Stroke mm
24N2A25A010	10
24N2A25A025	25
24N2A25A040	40
24N2A25A050	50
24N2A25A080	80
24N2A25A100	100
24N2A25A125	125
24N2A25A160	160
24N2A25A200	200
24N2A25A250	250
24N2A25A300	300
24N2A25A320	320
24N2A25A400	400
24N2A25A500	500

Tech Sheet 1844

G1/8", Ø20mm

0158	Stroke mm
24N2A20A010	10
24N2A20A025	25
24N2A20A040	40
24N2A20A050	50
24N2A20A080	80
24N2A20A100	100
24N2A20A125	125
24N2A20A160	160
24N2A20A200	200
24N2A20A250	250
24N2A20A300	300

Tech Sheet 1844



For Super-Rapid Compact Fittings
see page 832

ISO 6432 CYLINDERS



Mini-ISO Cylinders



Micro Cylinders Double Acting 8mm-16mm

0110	Bore mm	Stroke mm
1280.10.15.M	10	15
1280.10.100.M	10	100
1280.12.15.M	12	15
1280.12.50.M	12	50
1280.12.100.M	12	100
1280.12.250.M	12	250
1280.12.300.M	12	300
1280.16.50.M	16	50
1280.16.75.M	16	75
1280.16.80.M	16	80
1280.16.100.M	16	100
1280.16.150.M	16	150
1280.16.160.M	16	160
1280.16.200.M	16	200

Micro Cylinders Double Acting No Rear Eye 8mm-16mm

0110	Bore mm	Stroke mm
1281.12.150.M	12	150
1281.16.80.M	16	80
1281.16.150.M	16	150

Micro Cylinders Double Acting No Rear Eye 20mm-32mm

0110	Bore mm	Stroke mm
1281.20.50.M	20	50
1281.20.200.M	20	200
1281.25.50.M	25	50
1281.25.75.M	25	75
1281.25.160.M	25	160
1281.32.50.M	32	50
1281.32.75.M	32	75
1281.32.200.M	32	200
1281.32.300.M	32	300

Micro Cylinders Double Acting 20mm-32mm

0110	Bore mm	Stroke mm
1280.20.15.M	20	15
1280.20.25.M	20	25
1280.20.50.M	20	50
1280.20.75.M	20	75
1280.20.80.M	20	80
1280.20.150.M	20	150
1280.20.200.M	20	200
1280.20.250.M	20	250
1280.20.300.M	20	300
1280.20.350.M	20	350
1280.25.15.M	25	15
1280.25.25.M	25	25
1280.25.50.M	25	50
1280.25.75.M	25	75
1280.25.80.M	25	80
1280.25.100.M	25	100
1280.25.125.M	25	125
1280.25.200.M	25	200
1280.25.250.M	25	250
1280.25.300.M	25	300
1280.25.400.M	25	400
1280.32.50.M	32	50
1280.32.150.M	32	150
1280.32.250.M	32	250
1280.32.400.M	32	400



For PNEUMAX Air Preparation
see page 700

Mini-ISO Cylinder Mountings



1580U Reed Switch c/w LED

0110	Description
1580U	LED Reed Switch N/O



1500.U Switch Clamps 12mm-32mm

0110	Bore mm
1280.16.F	16



Rod Clevis c/w Pin 8mm-32mm

0110	Bore mm
1200.12.04	12



1580.U Switch Clamps 8mm-32mm

0110	Bore mm
1280.8.FS	8



Foot Bracket 8mm-32mm

0110	Bore mm
1200.8.01	8



Rod Clevis c/w Pin & Clip 8mm-32mm

0110	Bore mm
1200.25.04/1	25



1500U Reed Switch c/w LED

0110	Description
1500.U	LED Reed Switch N/O



Flange Bracket 8mm-32mm

0110	Bore mm
1200.8.02	8



Rod Nut & Locking Ring 8mm-32mm

0110	Bore mm
1200.8.05	8



Rear Eye Bracket 8mm-32mm

0110	Bore mm
1200.32.03	32