



techhose

QUALITY CONNECTIONS

Hydraulics

Pneumatics
& Vacuum

Industrial

Compressed Air
& Ring Main

Process &
Instrumentation

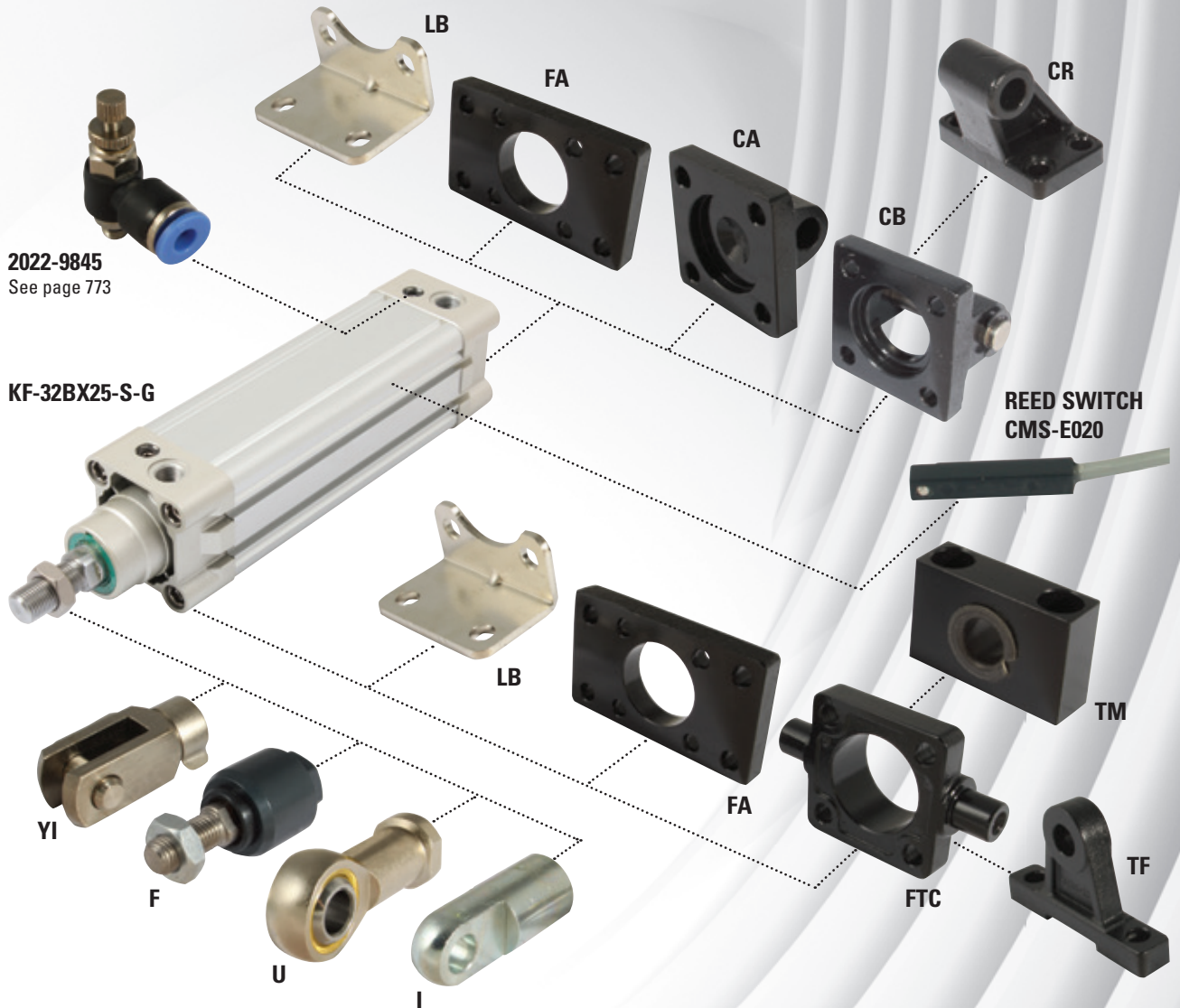
Pneumatic & Vacuum

ISO 15552 Cylinders & Accessories

PNEUMATIC GEN 1 & 2 ISO 15552 CYLINDERS

Accessories & Mounting Selector

stainless steel



ISO 15552 Cylinders

FA	Front and rear flange mounting	CR	Rear bracket mounting
FTC	Front trunnion mounting	LB	Foot mounting (pair)
TF	Front trunnion clevis mounting	YI	Piston rod clevis
TM	Trunnion support mounting	I	Piston rod clevis
CA	Rear eye mounting	F	Piston rod floating joint
CB	Rear clevis mounting	U	Piston rod universal joint
		Reed Switches	Two wire N/O with LED

Cylinders
Pages 480-483

Mountings
Pages 484-485

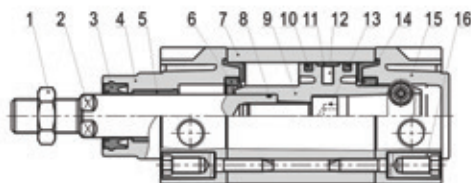
Reed Switches
Page 485

Cylinder Guides
Page 486

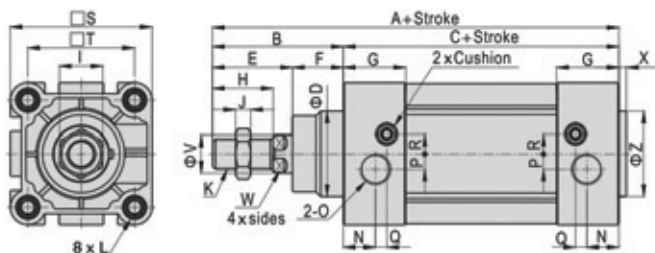
Technical Information

Inner Structure & Material of Major Parts

No.	Item	Material
1	Rod nut	Stainless steel
2	Piston rod	Blank: medium carbon steel B: 304 stainless steel
3	Front cover packing	TPU
4	Front cover	Aluminium alloy
5	Bushing	Wear-resistant material
6	Cushioning O-ring	TPU
7	Barrel	Aluminium alloy
8	O-ring	Nitrile
9	Piston	Aluminium alloy
10	Piston seal	TPU
11	Wear ring	Wear-resistant material
12	Magnet	Plastic/rubber (Ø125)
13	Bolt	Carbon steel
14	Buffer gasket	TPU
15	Back cover	Aluminium alloy
16	Screw	Carbon steel/stainless steel



Dimensions



Bore Size/Item	A	B	C	D	E	F	G	H	I	J	K	L	N	P	Q	R	S	T	V	W	X	Z
32	142	48	94	30	29	19	27.5	22	17	6	M10 x 1.25	M6	13.5	5.8	6	6.3	46.5	32.5	12	10	3	30
40	159	54	105	35	33	21	32	24	17	7	M12 x 1.25	M6	17.5	6	5.5	9	54	38	16	13	3.5	35
50	175	69	106	40	42	27	31	32	23	8	M16 x 1.5	M8	14	8	5	10.5	64	46.5	20	17	3.5	40
63	190	69	121	45	42	27	33	32	23	8	M16 x 1.5	M8	17	8	6	10.5	75	56.5	20	17	4	45
80	214	86	128	45	53	33	33	40	26	10	M20 x 1.5	M10	16.5	8	8.5	12.5	93	72	25	22	4	45
100	229	91	138	55	55	36	37	40	26	10	M20 x 1.5	M10	19.5	10	7	12	110	89	25	22	4	55
125	279	119	160	60	74	45	46	54	41	13.5	M27 x 2	M12	23	11	12	11	135	110	32	27	4	60

PNEUMATIC CYLINDERS



Gen 1 ISO 15552 Cylinders

Medium:

Clean compressed air. Filtered (40µm) and lubricated adjustable cushioning.

Piston Rod Material: Chrome plated carbon steel.

Please note: Bore sizes 125mm are available on a lead time.

Please contact our sales office for details.



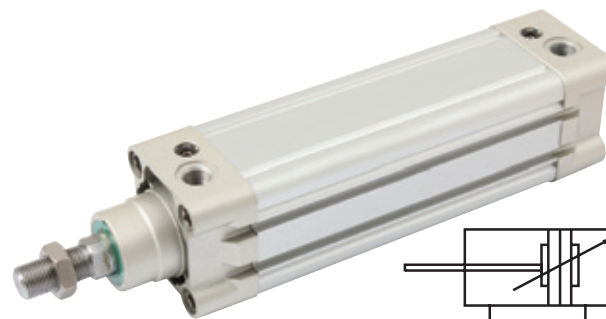
Working Temperature:
-20°C to +80°C

Working Pressure:
1 to 10 bar

Chrome Plated Carbon Steel Piston Rod as Standard

Magnetic Double Acting, Adjustable Cushioning, BSPP

0414	Bore mm	Stroke mm	Thread	Piston Rod Thread
KI-32X25-S-G	32	25	1/8"	M10 x 1.25
KI-32X50-S-G	32	50	1/8"	M10 x 1.25
KI-32X75-S-G	32	75	1/8"	M10 x 1.25
KI-32X80-S-G	32	80	1/8"	M10 x 1.25
KI-32X100-S-G	32	100	1/8"	M10 x 1.25
KI-32X125-S-G	32	125	1/8"	M10 x 1.25
KI-32X150-S-G	32	150	1/8"	M10 x 1.25
KI-32X160-S-G	32	160	1/8"	M10 x 1.25
KI-32X175-S-G	32	175	1/8"	M10 x 1.25
KI-32X200-S-G	32	200	1/8"	M10 x 1.25
KI-32X250-S-G	32	250	1/8"	M10 x 1.25
KI-32X300-S-G	32	300	1/8"	M10 x 1.25
KI-32X350-S-G	32	350	1/8"	M10 x 1.25
KI-32X400-S-G	32	400	1/8"	M10 x 1.25
KI-32X450-S-G	32	450	1/8"	M10 x 1.25
KI-32X500-S-G	32	500	1/8"	M10 x 1.25
KI-40X25-S-G	40	25	1/4"	M12 x 1.25
KI-40X50-S-G	40	50	1/4"	M12 x 1.25
KI-40X75-S-G	40	75	1/4"	M12 x 1.25
KI-40X80-S-G	40	80	1/4"	M12 x 1.25
KI-40X100-S-G	40	100	1/4"	M12 x 1.25
KI-40X125-S-G	40	125	1/4"	M12 x 1.25
KI-40X150-S-G	40	150	1/4"	M12 x 1.25
KI-40X160-S-G	40	160	1/4"	M12 x 1.25
KI-40X175-S-G	40	175	1/4"	M12 x 1.25
KI-40X200-S-G	40	200	1/4"	M12 x 1.25
KI-40X250-S-G	40	250	1/4"	M12 x 1.25
KI-40X300-S-G	40	300	1/4"	M12 x 1.25
KI-40X350-S-G	40	350	1/4"	M12 x 1.25
KI-40X400-S-G	40	400	1/4"	M12 x 1.25
KI-40X450-S-G	40	450	1/4"	M12 x 1.25
KI-40X500-S-G	40	500	1/4"	M12 x 1.25
KI-40X600-S-G	40	600	1/4"	M12 x 1.25
KI-40X700-S-G	40	700	1/4"	M12 x 1.25
KI-40X800-S-G	40	800	1/4"	M12 x 1.25
KI-50X25-S-G	50	25	1/4"	M16 x 1.5
KI-50X50-S-G	50	50	1/4"	M16 x 1.5
KI-50X75-S-G	50	75	1/4"	M16 x 1.5
KI-50X80-S-G	50	80	1/4"	M16 x 1.5
KI-50X100-S-G	50	100	1/4"	M16 x 1.5
KI-50X125-S-G	50	125	1/4"	M16 x 1.5
KI-50X150-S-G	50	150	1/4"	M16 x 1.5
KI-50X160-S-G	50	160	1/4"	M16 x 1.5
KI-50X175-S-G	50	175	1/4"	M16 x 1.5
KI-50X200-S-G	50	200	1/4"	M16 x 1.5
KI-50X250-S-G	50	250	1/4"	M16 x 1.5



0414	Bore mm	Stroke mm	Thread	Piston Rod Thread
KI-50X300-S-G	50	300	1/4"	M16 x 1.5
KI-50X350-S-G	50	350	1/4"	M16 x 1.5
KI-50X400-S-G	50	400	1/4"	M16 x 1.5
KI-50X450-S-G	50	450	1/4"	M16 x 1.5
KI-50X500-S-G	50	500	1/4"	M16 x 1.5
KI-50X600-S-G	50	600	1/4"	M16 x 1.5
KI-50X700-S-G	50	700	1/4"	M16 x 1.5
KI-50X800-S-G	50	800	1/4"	M16 x 1.5
KI-50X900-S-G	50	900	1/4"	M16 x 1.5
KI-50X1000-S-G	50	1000	1/4"	M16 x 1.5
KI-63X25-S-G	63	25	3/8"	M16 x 1.5
KI-63X50-S-G	63	50	3/8"	M16 x 1.5
KI-63X75-S-G	63	75	3/8"	M16 x 1.5
KI-63X80-S-G	63	80	3/8"	M16 x 1.5
KI-63X100-S-G	63	100	3/8"	M16 x 1.5
KI-63X125-S-G	63	125	3/8"	M16 x 1.5
KI-63X150-S-G	63	150	3/8"	M16 x 1.5
KI-63X160-S-G	63	160	3/8"	M16 x 1.5
KI-63X175-S-G	63	175	3/8"	M16 x 1.5
KI-63X200-S-G	63	200	3/8"	M16 x 1.5
KI-63X250-S-G	63	250	3/8"	M16 x 1.5
KI-63X300-S-G	63	300	3/8"	M16 x 1.5
KI-63X350-S-G	63	350	3/8"	M16 x 1.5
KI-63X400-S-G	63	400	3/8"	M16 x 1.5
KI-63X450-S-G	63	450	3/8"	M16 x 1.5
KI-63X500-S-G	63	500	3/8"	M16 x 1.5
KI-63X600-S-G	63	600	3/8"	M16 x 1.5
KI-63X700-S-G	63	700	3/8"	M16 x 1.5
KI-63X800-S-G	63	800	3/8"	M16 x 1.5
KI-63X900-S-G	63	900	3/8"	M16 x 1.5
KI-63X1000-S-G	63	1000	3/8"	M16 x 1.5
KI-80X25-S-G	80	25	3/8"	M20 x 1.5
KI-80X50-S-G	80	50	3/8"	M20 x 1.5
KI-80X75-S-G	80	75	3/8"	M20 x 1.5
KI-80X80-S-G	80	80	3/8"	M20 x 1.5
KI-80X100-S-G	80	100	3/8"	M20 x 1.5
KI-80X125-S-G	80	125	3/8"	M20 x 1.5
KI-80X150-S-G	80	150	3/8"	M20 x 1.5
KI-80X160-S-G	80	160	3/8"	M20 x 1.5
KI-80X175-S-G	80	175	3/8"	M20 x 1.5
KI-80X200-S-G	80	200	3/8"	M20 x 1.5
KI-80X250-S-G	80	250	3/8"	M20 x 1.5
KI-80X300-S-G	80	300	3/8"	M20 x 1.5
KI-80X350-S-G	80	350	3/8"	M20 x 1.5
KI-80X400-S-G	80	400	3/8"	M20 x 1.5

Tech Sheet 10657

Further sizes in this range continued on next page

Gen 1 ISO 15552 Cylinders

Medium:

Clean compressed air. Filtered (40µm) and lubricated adjustable cushioning.

Piston Rod Material: Chrome plated carbon steel.

Please note: Bore sizes 125mm are available on a lead time.

Please contact our sales office for details.



° Working Temperature:

-20°C to +80°C

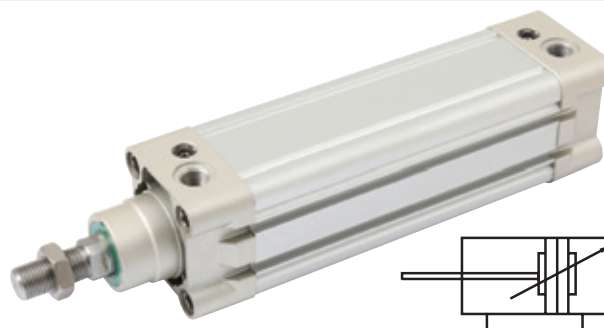
Working Pressure:

1 to 10 bar

Chrome Plated Carbon Steel Piston Rod as Standard

Magnetic Double Acting, Adjustable Cushioning, BSPP

0414	Bore mm	Stroke mm	Thread	Piston Rod Thread
KI-80X450-S-G	80	450	3/8"	M20 x 1.5
KI-80X500-S-G	80	500	3/8"	M20 x 1.5
KI-80X600-S-G	80	600	3/8"	M20 x 1.5
KI-80X700-S-G	80	700	3/8"	M20 x 1.5
KI-80X800-S-G	80	800	3/8"	M20 x 1.5
KI-80X900-S-G	80	900	3/8"	M20 x 1.5
KI-80X1000-S-G	80	1000	3/8"	M20 x 1.5
KI-100X25-S-G	100	25	1/2"	M20 x 1.5
KI-100X50-S-G	100	50	1/2"	M20 x 1.5
KI-100X75-S-G	100	75	1/2"	M20 x 1.5
KI-100X80-S-G	100	80	1/2"	M20 x 1.5
KI-100X100-S-G	100	100	1/2"	M20 x 1.5
KI-100X125-S-G	100	125	1/2"	M20 x 1.5
KI-100X150-S-G	100	150	1/2"	M20 x 1.5
KI-100X160-S-G	100	160	1/2"	M20 x 1.5
KI-100X175-S-G	100	175	1/2"	M20 x 1.5
KI-100X200-S-G	100	200	1/2"	M20 x 1.5
KI-100X250-S-G	100	250	1/2"	M20 x 1.5
KI-100X300-S-G	100	300	1/2"	M20 x 1.5
KI-100X350-S-G	100	350	1/2"	M20 x 1.5
KI-100X400-S-G	100	400	1/2"	M20 x 1.5
KI-100X450-S-G	100	450	1/2"	M20 x 1.5
KI-100X500-S-G	100	500	1/2"	M20 x 1.5
KI-100X600-S-G	100	600	1/2"	M20 x 1.5
KI-100X700-S-G	100	700	1/2"	M20 x 1.5



0414	Bore mm	Stroke mm	Thread	Piston Rod Thread
KI-100X800-S-G	100	800	1/2"	M20 x 1.5
KI-100X900-S-G	100	900	1/2"	M20 x 1.5
KI-100X1000-S-G	100	1000	1/2"	M20 x 1.5
KI-125X25-S-G	125	25	1/2"	M27 x 2
KI-125X50-S-G	125	50	1/2"	M27 x 2
KI-125X75-S-G	125	75	1/2"	M27 x 2
KI-125X80-S-G	125	80	1/2"	M27 x 2
KI-125X100-S-G	125	100	1/2"	M27 x 2
KI-125X125-S-G	125	125	1/2"	M27 x 2
KI-125X150-S-G	125	150	1/2"	M27 x 2
KI-125X160-S-G	125	160	1/2"	M27 x 2
KI-125X175-S-G	125	175	1/2"	M27 x 2
KI-125X200-S-G	125	200	1/2"	M27 x 2
KI-125X250-S-G	125	250	1/2"	M27 x 2
KI-125X300-S-G	125	300	1/2"	M27 x 2
KI-125X350-S-G	125	350	1/2"	M27 x 2
KI-125X400-S-G	125	400	1/2"	M27 x 2
KI-125X450-S-G	125	450	1/2"	M27 x 2
KI-125X500-S-G	125	500	1/2"	M27 x 2
KI-125X600-S-G	125	600	1/2"	M27 x 2
KI-125X700-S-G	125	700	1/2"	M27 x 2
KI-125X800-S-G	125	800	1/2"	M27 x 2
KI-125X900-S-G	125	900	1/2"	M27 x 2
KI-125X1000-S-G	125	1000	1/2"	M27 x 2

Tech Sheet 10657



For FT Air Preparation
see page 637



For Reed Switches see page 455

PNEUMATIC CYLINDERS



Gen 2 ISO 15552 Cylinders

Medium:

Clean compressed air. Filtered (40µm) and lubricated adjustable cushioning.

Piston Rod Material: Stainless steel 304.

Please note: Bore sizes 125mm are available on a lead time.

Please contact our sales office for details.



Working Temperature:
-20°C to +80°C

Working Pressure:
1 to 10 bar

Stainless Steel Piston Rod as Standard

Magnetic Double Acting, Adjustable Cushioning, BSPP

0413	Bore mm	Stroke mm	Thread	Piston Rod Thread
KI-32BX25-S-G	32	25	1/8"	M10 x 1.25
KI-32BX50-S-G	32	50	1/8"	M10 x 1.25
KI-32BX75-S-G	32	75	1/8"	M10 x 1.25
KI-32BX80-S-G	32	80	1/8"	M10 x 1.25
KI-32BX100-S-G	32	100	1/8"	M10 x 1.25
KI-32BX125-S-G	32	125	1/8"	M10 x 1.25
KI-32BX150-S-G	32	150	1/8"	M10 x 1.25
KI-32BX160-S-G	32	160	1/8"	M10 x 1.25
KI-32BX175-S-G	32	175	1/8"	M10 x 1.25
KI-32BX200-S-G	32	200	1/8"	M10 x 1.25
KI-32BX250-S-G	32	250	1/8"	M10 x 1.25
KI-32BX300-S-G	32	300	1/8"	M10 x 1.25
KI-32BX350-S-G	32	350	1/8"	M10 x 1.25
KI-32BX400-S-G	32	400	1/8"	M10 x 1.25
KI-32BX450-S-G	32	450	1/8"	M10 x 1.25
KI-32BX500-S-G	32	500	1/8"	M10 x 1.25
KI-40BX25-S-G	40	25	1/4"	M12 x 1.25
KI-40BX50-S-G	40	50	1/4"	M12 x 1.25
KI-40BX75-S-G	40	75	1/4"	M12 x 1.25
KI-40BX80-S-G	40	80	1/4"	M12 x 1.25
KI-40BX100-S-G	40	100	1/4"	M12 x 1.25
KI-40BX125-S-G	40	125	1/4"	M12 x 1.25
KI-40BX150-S-G	40	150	1/4"	M12 x 1.25
KI-40BX160-S-G	40	160	1/4"	M12 x 1.25
KI-40BX175-S-G	40	175	1/4"	M12 x 1.25
KI-40BX200-S-G	40	200	1/4"	M12 x 1.25
KI-40BX250-S-G	40	250	1/4"	M12 x 1.25
KI-40BX300-S-G	40	300	1/4"	M12 x 1.25
KI-40BX350-S-G	40	350	1/4"	M12 x 1.25
KI-40BX400-S-G	40	400	1/4"	M12 x 1.25
KI-40BX450-S-G	40	450	1/4"	M12 x 1.25
KI-40BX500-S-G	40	500	1/4"	M12 x 1.25
KI-40BX600-S-G	40	600	1/4"	M12 x 1.25
KI-40BX700-S-G	40	700	1/4"	M12 x 1.25
KI-40BX800-S-G	40	800	1/4"	M12 x 1.25
KI-50BX25-S-G	50	25	1/4"	M16 x 1.5
KI-50BX50-S-G	50	50	1/4"	M16 x 1.5
KI-50BX75-S-G	50	75	1/4"	M16 x 1.5
KI-50BX80-S-G	50	80	1/4"	M16 x 1.5
KI-50BX100-S-G	50	100	1/4"	M16 x 1.5
KI-50BX125-S-G	50	125	1/4"	M16 x 1.5
KI-50BX150-S-G	50	150	1/4"	M16 x 1.5
KI-50BX160-S-G	50	160	1/4"	M16 x 1.5
KI-50BX175-S-G	50	175	1/4"	M16 x 1.5
KI-50BX200-S-G	50	200	1/4"	M16 x 1.5
KI-50BX250-S-G	50	250	1/4"	M16 x 1.5



0413	Bore mm	Stroke mm	Thread	Piston Rod Thread
KI-50BX300-S-G	50	300	1/4"	M16 x 1.5
KI-50BX350-S-G	50	350	1/4"	M16 x 1.5
KI-50BX400-S-G	50	400	1/4"	M16 x 1.5
KI-50BX450-S-G	50	450	1/4"	M16 x 1.5
KI-50BX500-S-G	50	500	1/4"	M16 x 1.5
KI-50BX600-S-G	50	600	1/4"	M16 x 1.5
KI-50BX700-S-G	50	700	1/4"	M16 x 1.5
KI-50BX800-S-G	50	800	1/4"	M16 x 1.5
KI-50BX900-S-G	50	900	1/4"	M16 x 1.5
KI-50BX1000-S-G	50	1000	1/4"	M16 x 1.5
KI-63BX25-S-G	63	25	3/8"	M16 x 1.5
KI-63BX50-S-G	63	50	3/8"	M16 x 1.5
KI-63BX75-S-G	63	75	3/8"	M16 x 1.5
KI-63BX80-S-G	63	80	3/8"	M16 x 1.5
KI-63BX100-S-G	63	100	3/8"	M16 x 1.5
KI-63BX125-S-G	63	125	3/8"	M16 x 1.5
KI-63BX150-S-G	63	150	3/8"	M16 x 1.5
KI-63BX160-S-G	63	160	3/8"	M16 x 1.5
KI-63BX175-S-G	63	175	3/8"	M16 x 1.5
KI-63BX200-S-G	63	200	3/8"	M16 x 1.5
KI-63BX250-S-G	63	250	3/8"	M16 x 1.5
KI-63BX300-S-G	63	300	3/8"	M16 x 1.5
KI-63BX350-S-G	63	350	3/8"	M16 x 1.5
KI-63BX400-S-G	63	400	3/8"	M16 x 1.5
KI-63BX450-S-G	63	450	3/8"	M16 x 1.5
KI-63BX500-S-G	63	500	3/8"	M16 x 1.5
KI-63BX600-S-G	63	600	3/8"	M16 x 1.5
KI-63BX700-S-G	63	700	3/8"	M16 x 1.5
KI-63BX800-S-G	63	800	3/8"	M16 x 1.5
KI-63BX900-S-G	63	900	3/8"	M16 x 1.5
KI-63BX1000-S-G	63	1000	3/8"	M16 x 1.5
KI-80BX25-S-G	80	25	3/8"	M20 x 1.5
KI-80BX50-S-G	80	50	3/8"	M20 x 1.5
KI-80BX75-S-G	80	75	3/8"	M20 x 1.5
KI-80BX80-S-G	80	80	3/8"	M20 x 1.5
KI-80BX100-S-G	80	100	3/8"	M20 x 1.5
KI-80BX125-S-G	80	125	3/8"	M20 x 1.5
KI-80BX150-S-G	80	150	3/8"	M20 x 1.5
KI-80BX160-S-G	80	160	3/8"	M20 x 1.5
KI-80BX175-S-G	80	175	3/8"	M20 x 1.5
KI-80BX200-S-G	80	200	3/8"	M20 x 1.5
KI-80BX250-S-G	80	250	3/8"	M20 x 1.5
KI-80BX300-S-G	80	300	3/8"	M20 x 1.5
KI-80BX350-S-G	80	350	3/8"	M20 x 1.5
KI-80BX400-S-G	80	400	3/8"	M20 x 1.5

Tech Sheet 10657

Further sizes in this range continued on next page

Gen 2 ISO 15552 Cylinders

Medium:

Clean compressed air. Filtered (40µm) and lubricated adjustable cushioning.

Piston Rod Material: Stainless steel 304

Please note: Bore sizes 125mm are available on a lead time.

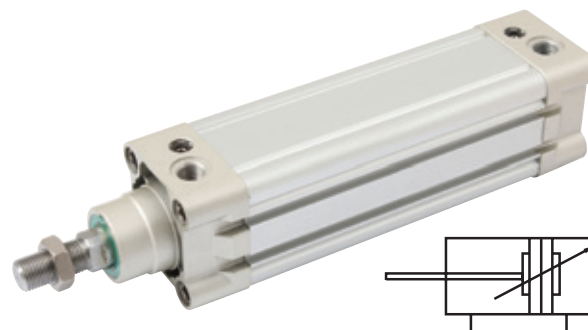
Please contact our sales office for details.



Working Temperature:
-20°C to +80°C

Working Pressure:
1 to 10 bar

Stainless Steel Piston Rod as Standard



Magnetic Double Acting, Adjustable Cushioning, BSPP

0413	Bore mm	Stroke mm	Thread	Piston Rod Thread
KI-80BX450-S-G	80	450	3/8"	M20 x 1.5
KI-80BX500-S-G	80	500	3/8"	M20 x 1.5
KI-80BX600-S-G	80	600	3/8"	M20 x 1.5
KI-80BX700-S-G	80	700	3/8"	M20 x 1.5
KI-80BX800-S-G	80	800	3/8"	M20 x 1.5
KI-80BX900-S-G	80	900	3/8"	M20 x 1.5
KI-80BX1000-S-G	80	1000	3/8"	M20 x 1.5
KI-100BX25-S-G	100	25	1/2"	M20 x 1.5
KI-100BX50-S-G	100	50	1/2"	M20 x 1.5
KI-100BX75-S-G	100	75	1/2"	M20 x 1.5
KI-100BX80-S-G	100	80	1/2"	M20 x 1.5
KI-100BX100-S-G	100	100	1/2"	M20 x 1.5
KI-100BX125-S-G	100	125	1/2"	M20 x 1.5
KI-100BX150-S-G	100	150	1/2"	M20 x 1.5
KI-100BX160-S-G	100	160	1/2"	M20 x 1.5
KI-100BX175-S-G	100	175	1/2"	M20 x 1.5
KI-100BX200-S-G	100	200	1/2"	M20 x 1.5
KI-100BX250-S-G	100	250	1/2"	M20 x 1.5
KI-100BX300-S-G	100	300	1/2"	M20 x 1.5
KI-100BX350-S-G	100	350	1/2"	M20 x 1.5
KI-100BX400-S-G	100	400	1/2"	M20 x 1.5
KI-100BX450-S-G	100	450	1/2"	M20 x 1.5
KI-100BX500-S-G	100	500	1/2"	M20 x 1.5
KI-100BX600-S-G	100	600	1/2"	M20 x 1.5
KI-100BX700-S-G	100	700	1/2"	M20 x 1.5

0413	Bore mm	Stroke mm	Thread	Piston Rod Thread
KI-100BX800-S-G	100	800	1/2"	M20 x 1.5
KI-100BX900-S-G	100	900	1/2"	M20 x 1.5
KI-100BX1000-S-G	100	1000	1/2"	M20 x 1.5
KI-125BX25-S-G	125	25	1/2"	M27 x 2
KI-125BX50-S-G	125	50	1/2"	M27 x 2
KI-125BX75-S-G	125	75	1/2"	M27 x 2
KI-125BX80-S-G	125	80	1/2"	M27 x 2
KI-125BX100-S-G	125	100	1/2"	M27 x 2
KI-125BX125-S-G	125	125	1/2"	M27 x 2
KI-125BX150-S-G	125	150	1/2"	M27 x 2
KI-125BX160-S-G	125	160	1/2"	M27 x 2
KI-125BX175-S-G	125	175	1/2"	M27 x 2
KI-125BX200-S-G	125	200	1/2"	M27 x 2
KI-125BX250-S-G	125	250	1/2"	M27 x 2
KI-125BX300-S-G	125	300	1/2"	M27 x 2
KI-125BX350-S-G	125	350	1/2"	M27 x 2
KI-125BX400-S-G	125	400	1/2"	M27 x 2
KI-125BX450-S-G	125	450	1/2"	M27 x 2
KI-125BX500-S-G	125	500	1/2"	M27 x 2
KI-125BX600-S-G	125	600	1/2"	M27 x 2
KI-125BX700-S-G	125	700	1/2"	M27 x 2
KI-125BX800-S-G	125	800	1/2"	M27 x 2
KI-125BX900-S-G	125	900	1/2"	M27 x 2
KI-125BX1000-S-G	125	1000	1/2"	M27 x 2

Tech Sheet 10657



For **Reed Switches**
see page **485**



PNEUMATIC CYLINDERS



ISO 15552 Mountings



Front/Rear Flange Mounting FA

0334	Bore mm
F-KF32FA	32
F-KF40FA	40
F-KF50FA	50
F-KF63FA	63
F-KF80FA	80
F-KF100FA	100
F-KF125FA	125

Tech Sheet 3012



Front Trunnion Mounting FTC

0334	Bore mm
F-KF32FTC	32
F-KF40FTC	40
F-KF50FTC	50
F-KF63FTC	63
F-KF80FTC	80
F-KF100FTC	100
F-KF160FTC	160

Tech Sheet 3013



Front Trunnion Clevis Mounting TF

0334	Bore mm
F-KF32TF	32
F-KF40TF	40/50
F-KF63TF	63/80
F-KF125TF	100/125

Tech Sheet 3014



Trunnion Support Mounting TM

0334	Bore mm
F-KF32TM	32
F-KF40TM	40/50
F-KF63TM	63/80
F-KF125TM	100/125
F-KF160TM	160/200

Tech Sheet 3015



Rear Eye Mounting CA

0334	Bore mm
F-KF32CA	32
F-KF40CA	40
F-KF50CA	50
F-KF63CA	63
F-KF80CA	80
F-KF100CA	100
F-KF125CA	125
F-KF160CA	160
F-KF200CA	200

Tech Sheet 3016



Rear Clevis Mounting CB

0334	Bore mm
F-KF32CB	32
F-KF40CB	40
F-KF50CB	50
F-KF63CB	63
F-KF80CB	80
F-KF100CB	100
F-KF125CB	125
F-KF160CB	160
F-KF200CB	200

Tech Sheet 3017



Rear Bracket Mounting CR

0334	Bore mm
F-KF32CR	32
F-KF40CR	40
F-KF50CR	50
F-KF63CR	63
F-KF80CR	80
F-KF100CR	100
F-KF125CR	125
F-KF160CR	160
F-KF200CR	200

Tech Sheet 3018



Foot Mounting LB, (Pair)

0334	Bore mm
F-KF32LB	32
F-KF40LB	40
F-KF50LB	50
F-KF63LB	63
F-KF80LB	80
F-KF100LB	100
F-KF125LB	125
F-KF160LB	160

Tech Sheet 3019



Piston Rod Clevis YI

0334	Bore mm	Thread
F-M10125YI	32	M10 x 1.25
F-M12125YI	40	M12 x 1.25
F-M16150YI	50/63	M16 x 1.5
F-M20150YI	80/100	M20 x 1.5
F-M27200YI	125	M27 x 2
F-M36200YI	160/200	M36 x 2

Tech Sheet 3020

ISO 15552 Mountings



Piston Rod Clevis I

0334	Bore mm	Thread
F-M10125II	25/32	M10 x 1.25
F-M12125II	40	M12 x 1.25
F-M16150II	50/63	M16 x 1.5
F-M20150II	80/100	M20 x 1.5
F-M27200II	125	M27 x 2

Tech Sheet 3021



Piston Rod Floating Joint F

0334	Bore mm	Thread
F-M10125F	25/32	M10 x 1.25
F-M12125F	40	M12 x 1.25
F-M16150F	50/63	M16 x 1.5
F-M20150F	80/100	M20 x 1.5

Tech Sheet 3022



Piston Rod Universal Joint U

0334	Bore mm	Thread
F-M10125U	25/32	M10 x 1.25
F-M12125U	40	M12 x 1.25
F-M16150U	50/63	M16 x 1.5
F-M20150U	80/100	M20 x 1.5
F-M27200U	125	M27 x 2
F-M36200U	160/200	M36 x 2

Tech Sheet 3023

Reed Switches to suit ISO 15552

° Working Temperature:
-10°C to +70°C



Two Wire, N/O with LED

0413	Length mm	Voltage
CSM-E020	2	5-240V AC/DC
CSM-E050	5	5-240V AC/DC

Tech Sheet 20890

Three Wire, NO Current Flows Out (PNP)

0413	Length mm	Voltage
DSM-EP020	2	5-30V DC
DSM-EP050	5	5-30V DC

Tech Sheet 20890

Three Wire, NO Current Flows In (NPN)

0413	Length mm	Voltage
DSM-EN020	2	5-30V DC
DSM-EN050	5	5-30V DC

Tech Sheet 20890



For FT Pro One Touch+ Plastic
Push-in Fittings Emergency Kits
see page 781



ISO 15552 Standard Cylinder Guides

The guide unit allows for standard ISO 15552 cylinder to move loads with high positioning accuracy.

Features and Benefits

- Protection against rotation at high torques.
- High guide precision for cylinder guiding.
- Supplied plain or recirculating ball bearing guides.



With Slide Bearings

0334	Bore mm	Stroke mm
KRF-32X50-0	32	50
KRF-32X100-0	32	100
KRF-32X160-0	32	160
KRF-32X200-0	32	200
KRF-32X250-0	32	250
KRF-32X320-0	32	320
KRF-32X400-0	32	400
KRF-32X500-0	32	500
KRF-40X50-0	40	50
KRF-40X100-0	40	100
KRF-40X160-0	40	160
KRF-40X200-0	40	200
KRF-40X250-0	40	250
KRF-40X320-0	40	320
KRF-40X400-0	40	400
KRF-40X500-0	40	500
KRF-50X50-0	50	50
KRF-50X100-0	50	100
KRF-50X160-0	50	160
KRF-50X200-0	50	200
KRF-50X250-0	50	250
KRF-50X320-0	50	320
KRF-50X400-0	50	400
KRF-50X500-0	50	500
KRF-63X50-0	63	50
KRF-63X100-0	63	100
KRF-63X160-0	63	160
KRF-63X200-0	63	200
KRF-63X250-0	63	250
KRF-63X320-0	63	320
KRF-63X400-0	63	400
KRF-63X500-0	63	500
KRF-80X50-0	80	50
KRF-80X100-0	80	100
KRF-80X160-0	80	160
KRF-80X200-0	80	200
KRF-80X250-0	80	250
KRF-80X320-0	80	320
KRF-80X400-0	80	400
KRF-80X500-0	80	500
KRF-100X50-0	100	50
KRF-100X100-0	100	100
KRF-100X160-0	100	160
KRF-100X200-0	100	200
KRF-100X250-0	100	250
KRF-100X320-0	100	320
KRF-100X400-0	100	400
KRF-100X500-0	100	500

Tech Sheet 20891



With Ball Bearings

0334	Bore mm	Stroke mm
KRF-32X50-1	32	50
KRF-32X100-1	32	100
KRF-32X160-1	32	160
KRF-32X200-1	32	200
KRF-32X250-1	32	250
KRF-32X320-1	32	320
KRF-32X400-1	32	400
KRF-32X500-1	32	500
KRF-40X50-1	40	50
KRF-40X100-1	40	100
KRF-40X160-1	40	160
KRF-40X200-1	40	200
KRF-40X250-1	40	250
KRF-40X320-1	40	320
KRF-40X400-1	40	400
KRF-40X500-1	40	500
KRF-50X50-1	50	50
KRF-50X100-1	50	100
KRF-50X160-1	50	160
KRF-50X200-1	50	200
KRF-50X250-1	50	250
KRF-50X320-1	50	320
KRF-50X400-1	50	400
KRF-50X500-1	50	500
KRF-63X50-1	63	50
KRF-63X100-1	63	100
KRF-63X160-1	63	160
KRF-63X200-1	63	200
KRF-63X250-1	63	250
KRF-63X320-1	63	320
KRF-63X400-1	63	400
KRF-63X500-1	63	500
KRF-80X50-1	80	50
KRF-80X100-1	80	100
KRF-80X160-1	80	160
KRF-80X200-1	80	200
KRF-80X250-1	80	250
KRF-80X320-1	80	320
KRF-80X400-1	80	400
KRF-80X500-1	80	500
KRF-100X50-1	100	50
KRF-100X100-1	100	100
KRF-100X160-1	100	160
KRF-100X200-1	100	200
KRF-100X250-1	100	250
KRF-100X320-1	100	320
KRF-100X400-1	100	400
KRF-100X500-1	100	500

Tech Sheet 20892

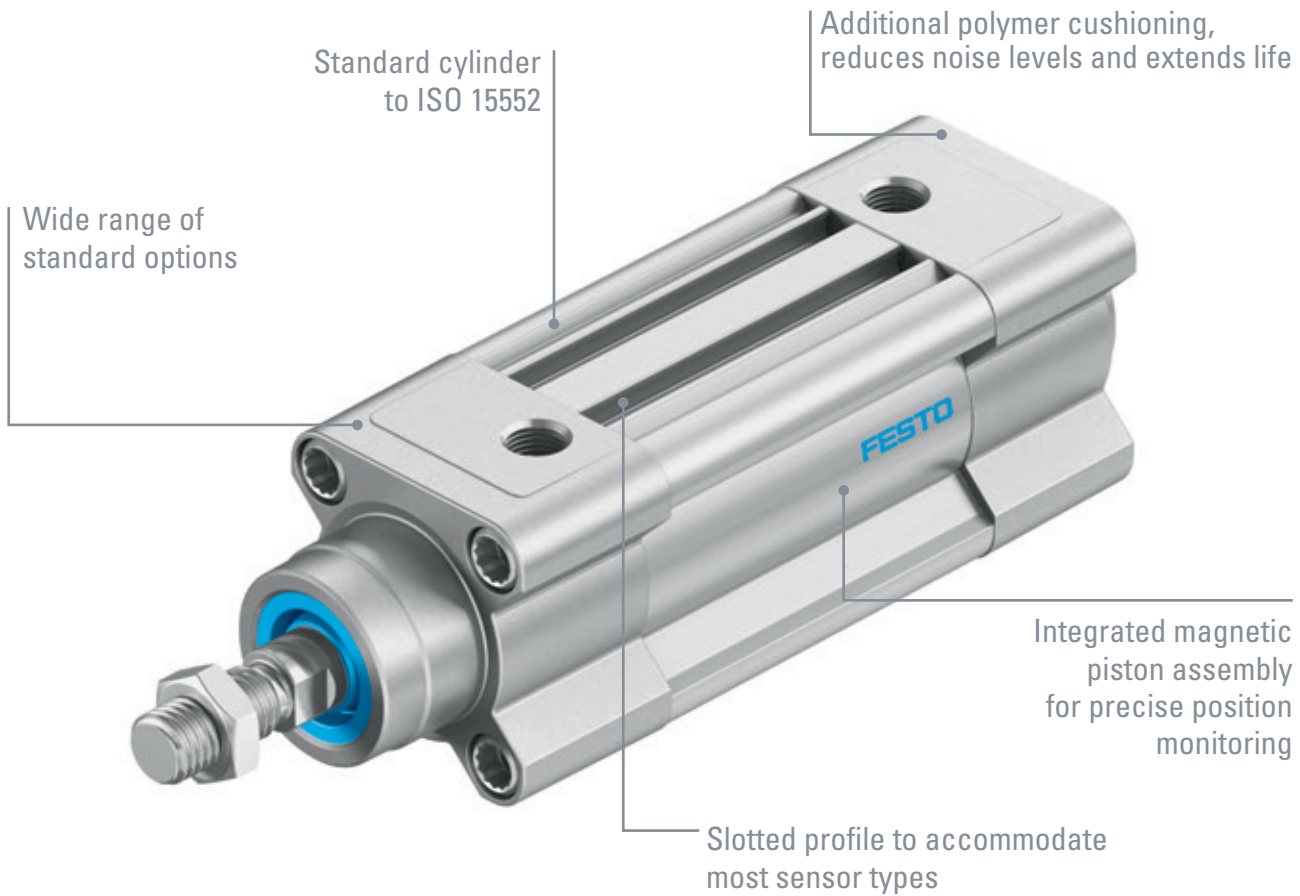
CYLINDERS

For the full range and more information, please contact one of our sales team.

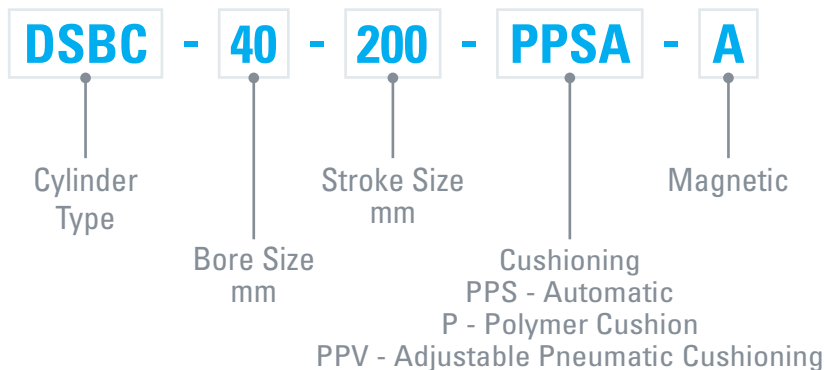
DSBC STANDARD CYLINDER



Features



Product Description



ISO 15552 STANDARD CYLINDERS, DSBC

FESTO



Double Acting, Adjustable Pneumatic Cushioning

- Strokes of up to 2800mm
- Excellent flexibility thanks to wide range of variants
- Extensive range of accessories makes it possible to install the cylinder virtually anywhere
- T-Slot

Magnetic

0009	Piston Diameter mm	Stroke mm	Piston Rod Thread	Manufacturer's Code
2123069	32	20	M10 x 1.25	DSBC-32-20-PPVA-N3
1376422	32	25	M10 x 1.25	DSBC-32-25-PPVA-N3
2123070	32	30	M10 x 1.25	DSBC-32-30-PPVA-N3
1376423	32	40	M10 x 1.25	DSBC-32-40-PPVA-N3
1376424	32	50	M10 x 1.25	DSBC-32-50-PPVA-N3
2123071	32	60	M10 x 1.25	DSBC-32-60-PPVA-N3
2123072	32	70	M10 x 1.25	DSBC-32-70-PPVA-N3
1376425	32	80	M10 x 1.25	DSBC-32-80-PPVA-N3
1376426	32	100	M10 x 1.25	DSBC-32-100-PPVA-N3
1376427	32	125	M10 x 1.25	DSBC-32-125-PPVA-N3
2123073	32	150	M10 x 1.25	DSBC-32-150-PPVA-N3
1376428	32	160	M10 x 1.25	DSBC-32-160-PPVA-N3
1376429	32	200	M10 x 1.25	DSBC-32-200-PPVA-N3
1376430	32	250	M10 x 1.25	DSBC-32-250-PPVA-N3
2123074	32	300	M10 x 1.25	DSBC-32-300-PPVA-N3
1376431	32	320	M10 x 1.25	DSBC-32-320-PPVA-N3
1376432	32	400	M10 x 1.25	DSBC-32-400-PPVA-N3
1376433	32	500	M10 x 1.25	DSBC-32-500-PPVA-N3

Tech Sheet 70239

Magnetic

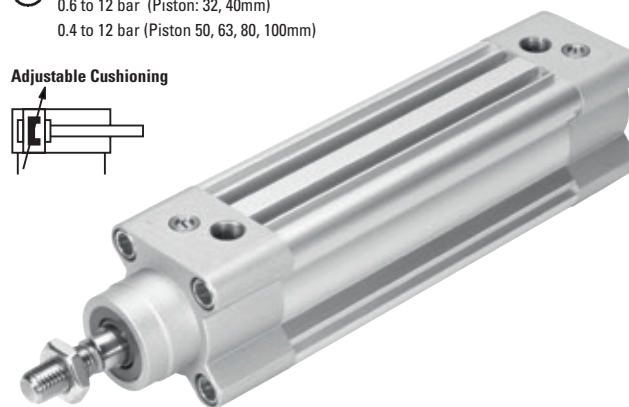
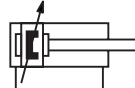
0009	Piston Diameter mm	Stroke mm	Piston Rod Thread	Manufacturer's Code
2123166	40	20	M12 x 1.25	DSBC-40-20-PPVA-N3
1376656	40	25	M12 x 1.25	DSBC-40-25-PPVA-N3
2123167	40	30	M12 x 1.25	DSBC-40-30-PPVA-N3
1376657	40	40	M12 x 1.25	DSBC-40-40-PPVA-N3
1376658	40	50	M12 x 1.25	DSBC-40-50-PPVA-N3
2123224	40	60	M12 x 1.25	DSBC-40-60-PPVA-N3
2123225	40	70	M12 x 1.25	DSBC-40-70-PPVA-N3
1376659	40	80	M12 x 1.25	DSBC-40-80-PPVA-N3
1376660	40	100	M12 x 1.25	DSBC-40-100-PPVA-N3
1376661	40	125	M12 x 1.25	DSBC-40-125-PPVA-N3
2123226	40	150	M12 x 1.25	DSBC-40-150-PPVA-N3
1376662	40	160	M12 x 1.25	DSBC-40-160-PPVA-N3
1376663	40	200	M12 x 1.25	DSBC-40-200-PPVA-N3
1376664	40	250	M12 x 1.25	DSBC-40-250-PPVA-N3
2123227	40	300	M12 x 1.25	DSBC-40-300-PPVA-N3
1376665	40	320	M12 x 1.25	DSBC-40-320-PPVA-N3
1376666	40	400	M12 x 1.25	DSBC-40-400-PPVA-N3
1376667	40	500	M12 x 1.25	DSBC-40-500-PPVA-N3
2098969	50	20	M16 x 1.5	DSBC-50-20-PPVA-N3
1366948	50	25	M16 x 1.5	DSBC-50-25-PPVA-N3
2098970	50	30	M16 x 1.5	DSBC-50-30-PPVA-N3
1366949	50	40	M16 x 1.5	DSBC-50-40-PPVA-N3
1366950	50	50	M16 x 1.5	DSBC-50-50-PPVA-N3
2098972	50	60	M16 x 1.5	DSBC-50-60-PPVA-N3
2098973	50	70	M16 x 1.5	DSBC-50-70-PPVA-N3
1366951	50	80	M16 x 1.5	DSBC-50-80-PPVA-N3
1366952	50	100	M16 x 1.5	DSBC-50-100-PPVA-N3
1366953	50	125	M16 x 1.5	DSBC-50-125-PPVA-N3
2098974	50	150	M16 x 1.5	DSBC-50-150-PPVA-N3
1366954	50	160	M16 x 1.5	DSBC-50-160-PPVA-N3
1366955	50	200	M16 x 1.5	DSBC-50-200-PPVA-N3
1366956	50	250	M16 x 1.5	DSBC-50-250-PPVA-N3
2098975	50	300	M16 x 1.5	DSBC-50-300-PPVA-N3
1366957	50	320	M16 x 1.5	DSBC-50-320-PPVA-N3
1366958	50	400	M16 x 1.5	DSBC-50-400-PPVA-N3
1366959	50	500	M16 x 1.5	DSBC-50-500-PPVA-N3

Tech Sheet 70240

° Ambient Temperature:
-20°C to +80°C

Working Pressure:
0.6 to 12 bar (Piston: 32, 40mm)
0.4 to 12 bar (Piston 50, 63, 80, 100mm)

Adjustable Cushioning



Magnetic

0009	Piston Diameter mm	Stroke mm	Piston Rod Thread	Manufacturer's Code
2125490	63	20	M16 x 1.5	DSBC-63-20-PPVA-N3
1383578	63	25	M16 x 1.5	DSBC-63-25-PPVA-N3
2125491	63	30	M16 x 1.5	DSBC-63-30-PPVA-N3
1383579	63	40	M16 x 1.5	DSBC-63-40-PPVA-N3
1383580	63	50	M16 x 1.5	DSBC-63-50-PPVA-N3
2125492	63	60	M16 x 1.5	DSBC-63-60-PPVA-N3
2125493	63	70	M16 x 1.5	DSBC-63-70-PPVA-N3
1383581	63	80	M16 x 1.5	DSBC-63-80-PPVA-N3
1383582	63	100	M16 x 1.5	DSBC-63-100-PPVA-N3
1383583	63	125	M16 x 1.5	DSBC-63-125-PPVA-N3
2125494	63	150	M16 x 1.5	DSBC-63-150-PPVA-N3
1383584	63	160	M16 x 1.5	DSBC-63-160-PPVA-N3
1383585	63	200	M16 x 1.5	DSBC-63-200-PPVA-N3
1383586	63	250	M16 x 1.5	DSBC-63-250-PPVA-N3
2125495	63	300	M16 x 1.5	DSBC-63-300-PPVA-N3
1383587	63	320	M16 x 1.5	DSBC-63-320-PPVA-N3
1383588	63	400	M16 x 1.5	DSBC-63-400-PPVA-N3
1383589	63	500	M16 x 1.5	DSBC-63-500-PPVA-N3
2126594	80	20	M20 x 1.5	DSBC-80-20-PPVA-N3
1383333	80	25	M20 x 1.5	DSBC-80-25-PPVA-N3
2126595	80	30	M20 x 1.5	DSBC-80-30-PPVA-N3
1383334	80	40	M20 x 1.5	DSBC-80-40-PPVA-N3
1383335	80	50	M20 x 1.5	DSBC-80-50-PPVA-N3
2126597	80	60	M20 x 1.5	DSBC-80-60-PPVA-N3
2126598	80	70	M20 x 1.5	DSBC-80-70-PPVA-N3
1383336	80	80	M20 x 1.5	DSBC-80-80-PPVA-N3
1383337	80	100	M20 x 1.5	DSBC-80-100-PPVA-N3
1383338	80	125	M20 x 1.5	DSBC-80-125-PPVA-N3
2126599	80	150	M20 x 1.5	DSBC-80-150-PPVA-N3
1383339	80	160	M20 x 1.5	DSBC-80-160-PPVA-N3
1383340	80	200	M20 x 1.5	DSBC-80-200-PPVA-N3
1383341	80	250	M20 x 1.5	DSBC-80-250-PPVA-N3
2126600	80	300	M20 x 1.5	DSBC-80-300-PPVA-N3
1383342	80	320	M20 x 1.5	DSBC-80-320-PPVA-N3
1383343	80	400	M20 x 1.5	DSBC-80-400-PPVA-N3
1383344	80	500	M20 x 1.5	DSBC-80-500-PPVA-N3

Tech Sheet 70241



Double Acting, Self-adjusting Pneumatic Cushioning

- Strokes of up to 2800mm
- Extensive range of accessories makes it possible to install the cylinder virtually anywhere
- Excellent flexibility thanks to wide range of variants
- T-Slot

Magnetic

0009	Piston Diameter mm	Stroke mm	Piston Rod Thread	Manufacturer's Code
2123085	32	20	M10 x 1.25	DSBC-32-20-PPSA-N3
1376467	32	25	M10 x 1.25	DSBC-32-25-PPSA-N3
2123086	32	30	M10 x 1.25	DSBC-32-30-PPSA-N3
1376468	32	40	M10 x 1.25	DSBC-32-40-PPSA-N3
1376469	32	50	M10 x 1.25	DSBC-32-50-PPSA-N3
2123087	32	60	M10 x 1.25	DSBC-32-60-PPSA-N3
2123088	32	70	M10 x 1.25	DSBC-32-70-PPSA-N3
1376470	32	80	M10 x 1.25	DSBC-32-80-PPSA-N3
1376471	32	100	M10 x 1.25	DSBC-32-100-PPSA-N3
1376472	32	125	M10 x 1.25	DSBC-32-125-PPSA-N3
2123089	32	150	M10 x 1.25	DSBC-32-150-PPSA-N3
1376473	32	160	M10 x 1.25	DSBC-32-160-PPSA-N3
1376474	32	200	M10 x 1.25	DSBC-32-200-PPSA-N3
1376475	32	250	M10 x 1.25	DSBC-32-250-PPSA-N3
2123090	32	300	M10 x 1.25	DSBC-32-300-PPSA-N3
1376476	32	320	M10 x 1.25	DSBC-32-320-PPSA-N3
1376477	32	400	M10 x 1.25	DSBC-32-400-PPSA-N3
1376478	32	500	M10 x 1.25	DSBC-32-500-PPSA-N3

Tech Sheet 70242

Magnetic

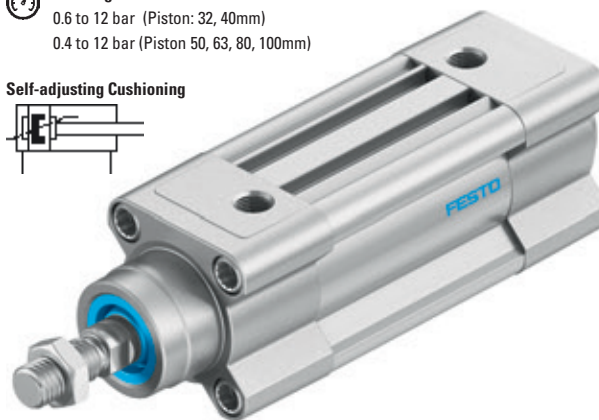
0009	Piston Diameter mm	Stroke mm	Piston Rod Thread	Manufacturer's Code
2123780	40	20	M12 x 1.25	DSBC-40-20-PPSA-N3
1376903	40	25	M12 x 1.25	DSBC-40-25-PPSA-N3
2123781	40	30	M12 x 1.25	DSBC-40-30-PPSA-N3
1376904	40	40	M12 x 1.25	DSBC-40-40-PPSA-N3
1376905	40	50	M12 x 1.25	DSBC-40-50-PPSA-N3
2123782	40	60	M12 x 1.25	DSBC-40-60-PPSA-N3
2123783	40	70	M12 x 1.25	DSBC-40-70-PPSA-N3
1376906	40	80	M12 x 1.25	DSBC-40-80-PPSA-N3
1376907	40	100	M12 x 1.25	DSBC-40-100-PPSA-N3
1376908	40	125	M12 x 1.25	DSBC-40-125-PPSA-N3
2123784	40	150	M12 x 1.25	DSBC-40-150-PPSA-N3
1376909	40	160	M12 x 1.25	DSBC-40-160-PPSA-N3
1376910	40	200	M12 x 1.25	DSBC-40-200-PPSA-N3
1376911	40	250	M12 x 1.25	DSBC-40-250-PPSA-N3
2123785	40	300	M12 x 1.25	DSBC-40-300-PPSA-N3
1376912	40	320	M12 x 1.25	DSBC-40-320-PPSA-N3
1376913	40	400	M12 x 1.25	DSBC-40-400-PPSA-N3
1376914	40	500	M12 x 1.25	DSBC-40-500-PPSA-N3
2102628	50	20	M16 x 1.5	DSBC-50-20-PPSA-N3
1376301	50	25	M16 x 1.5	DSBC-50-25-PPSA-N3
2102629	50	30	M16 x 1.5	DSBC-50-30-PPSA-N3
1376304	50	40	M16 x 1.5	DSBC-50-40-PPSA-N3
1376305	50	50	M16 x 1.5	DSBC-50-50-PPSA-N3
2102630	50	60	M16 x 1.5	DSBC-50-60-PPSA-N3
2102631	50	70	M16 x 1.5	DSBC-50-70-PPSA-N3
1376306	50	80	M16 x 1.5	DSBC-50-80-PPSA-N3
1376307	50	100	M16 x 1.5	DSBC-50-100-PPSA-N3
1376308	50	125	M16 x 1.5	DSBC-50-125-PPSA-N3
2102632	50	150	M16 x 1.5	DSBC-50-150-PPSA-N3
1376309	50	160	M16 x 1.5	DSBC-50-160-PPSA-N3
1376310	50	200	M16 x 1.5	DSBC-50-200-PPSA-N3
1376311	50	250	M16 x 1.5	DSBC-50-250-PPSA-N3
2102633	50	300	M16 x 1.5	DSBC-50-300-PPSA-N3
1376312	50	320	M16 x 1.5	DSBC-50-320-PPSA-N3
1376313	50	400	M16 x 1.5	DSBC-50-400-PPSA-N3
1376314	50	500	M16 x 1.5	DSBC-50-500-PPSA-N3

Tech Sheet 70243

Ambient Temperature:
-20°C to +80°C

Working Pressure:
0.6 to 12 bar (Piston: 32, 40mm)
0.4 to 12 bar (Piston 50, 63, 80, 100mm)

Self-adjusting Cushioning



Magnetic

0009	Piston Diameter mm	Stroke mm	Piston Rod Thread	Manufacturer's Code
2126684	63	20	M16 x 1.5	DSBC-63-20-PPSA-N3
1383632	63	25	M16 x 1.5	DSBC-63-25-PPSA-N3
2126685	63	30	M16 x 1.5	DSBC-63-30-PPSA-N3
1383633	63	40	M16 x 1.5	DSBC-63-40-PPSA-N3
1383634	63	50	M16 x 1.5	DSBC-63-50-PPSA-N3
2126686	63	60	M16 x 1.5	DSBC-63-60-PPSA-N3
2126687	63	70	M16 x 1.5	DSBC-63-70-PPSA-N3
1383635	63	80	M16 x 1.5	DSBC-63-80-PPSA-N3
1383636	63	100	M16 x 1.5	DSBC-63-100-PPSA-N3
1383637	63	125	M16 x 1.5	DSBC-63-125-PPSA-N3
2126688	63	150	M16 x 1.5	DSBC-63-150-PPSA-N3
1383638	63	160	M16 x 1.5	DSBC-63-160-PPSA-N3
1383639	63	200	M16 x 1.5	DSBC-63-200-PPSA-N3
1383640	63	250	M16 x 1.5	DSBC-63-250-PPSA-N3
2126689	63	300	M16 x 1.5	DSBC-63-300-PPSA-N3
1383641	63	320	M16 x 1.5	DSBC-63-320-PPSA-N3
1383642	63	400	M16 x 1.5	DSBC-63-400-PPSA-N3
1383643	63	500	M16 x 1.5	DSBC-63-500-PPSA-N3
2126636	80	20	M20 x 1.5	DSBC-80-20-PPSA-N3
1383366	80	25	M20 x 1.5	DSBC-80-25-PPSA-N3
2126637	80	30	M20 x 1.5	DSBC-80-30-PPSA-N3
1383367	80	40	M20 x 1.5	DSBC-80-40-PPSA-N3
1383368	80	50	M20 x 1.5	DSBC-80-50-PPSA-N3
2126638	80	60	M20 x 1.5	DSBC-80-60-PPSA-N3
2126639	80	70	M20 x 1.5	DSBC-80-70-PPSA-N3
1383369	80	80	M20 x 1.5	DSBC-80-80-PPSA-N3
1383370	80	100	M20 x 1.5	DSBC-80-100-PPSA-N3
1383371	80	125	M20 x 1.5	DSBC-80-125-PPSA-N3
2126640	80	150	M20 x 1.5	DSBC-80-150-PPSA-N3
1383372	80	160	M20 x 1.5	DSBC-80-160-PPSA-N3
1383373	80	200	M20 x 1.5	DSBC-80-200-PPSA-N3
1383374	80	250	M20 x 1.5	DSBC-80-250-PPSA-N3
2126641	80	300	M20 x 1.5	DSBC-80-300-PPSA-N3
1383375	80	320	M20 x 1.5	DSBC-80-320-PPSA-N3
1383376	80	400	M20 x 1.5	DSBC-80-400-PPSA-N3
1383377	80	500	M20 x 1.5	DSBC-80-500-PPSA-N3

Tech Sheet 70244

CYLINDER ATTACHMENTS & ACCESSORIES

FESTO


ISO 15552 Cylinders Mounting Components for Drive Units



Standard Swivel Flange with Spherical Rod Eye, ISO 15552

0009	To Suit Bore mm	Manufacturer's Code
174397	32	SNCS-32
174398	40	SNCS-40
174399	50	SNCS-50
174400	63	SNCS-63
174401	80	SNCS-80

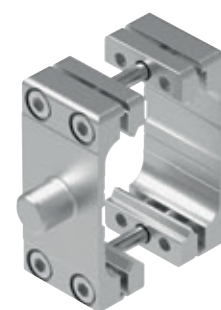
Tech Sheet 70220



Standard Swivel Flange, ISO 15552

0009	To Suit Bore mm	Manufacturer's Code
174383	32	SNC-32
174384	40	SNC-40
174385	50	SNC-50
174386	63	SNC-63
174387	80	SNC-80

Tech Sheet 70222



Trunnion Mounting Kit, ISO 15552

0009	To Suit Bore mm	Manufacturer's Code
2213233	32	DAMT-V1-32-A
2214899	40	DAMT-V1-40-A
2214909	50	DAMT-V1-50-A
2214971	63	DAMT-V1-63-A
163529	80	DAMT-V1-80-A

Tech Sheet 70224



Wide Swivel Flange, ISO 15552

0009	To Suit Bore mm	Manufacturer's Code
174404	32	SNCL-32
174405	40	SNCL-40
174406	50	SNCL-50
174407	63	SNCL-63
174408	80	SNCL-80

Tech Sheet 70221



Wide Swivel Flange, ISO 15552

0009	To Suit Bore mm	Manufacturer's Code
174390	32	SNCB-32
174391	40	SNCB-40
174392	50	SNCB-50
174393	63	SNCB-63
174394	80	SNCB-80

Tech Sheet 70223



SGS, Rod Eyes

0009	Thread	Manufacturer's Code
9254	M6	SGS-M6
9255	M8	SGS-M8
9261	M10 x 1.25	SGS-M10X1.25
9262	M12 x 1.25	SGS-M12X1.25
9263	M16 x 1.5	SGS-M16X1.5
9264	M20 x 1.5	SGS-M20X1.5

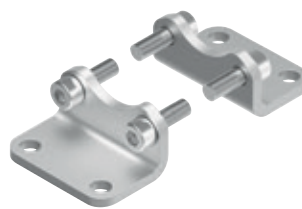
Tech Sheet 71576



Clevis Foot Mounting, ISO 15552

0009	To Suit Bore mm	Manufacturer's Code
33890	32	LNG-32
33891	40	LNG-40
33892	50	LNG-50
33893	63	LNG-63
33894	80	LNG-80

Tech Sheet 70215



Foot Mountings, ISO 15552

0009	To Suit Bore mm	Manufacturer's Code
174369	32	HNC-32
174370	40	HNC-40
174371	50	HNC-50
174372	63	HNC-63
174373	80	HNC-80

Tech Sheet 70219

For use with all cylinders.



Rod Clevis

0009	Thread	Manufacturer's Code
3110	M6	SG-M6
3111	M8	SG-M8
6144	M10 x 1.25	SG-M10X1.25
6145	M12 x 1.25	SG-M12X1.25
6146	M16 x 1.25	SG-M16X1.5
6147	M20 x 1.5	SG-M20X1.5

Tech Sheet 71577

ISO 15552 CYLINDERS

Double Acting Cylinders

Technical Data for ISO 15552 Cylinders

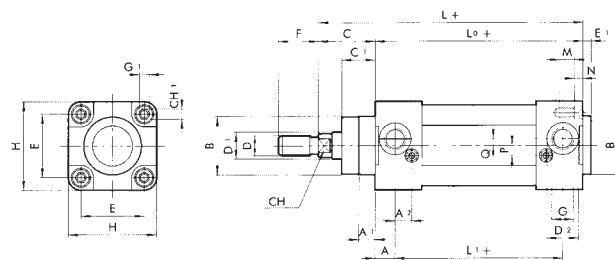
- Fluid: unlubricated air (lubrication, if used, must be continuous)
- Sensor magnet: all versions come complete with magnet
- Piston rod material: C40 chromed steel Ø32-63
- Piston seal: NBR

Temperature Range:
10°C to +70°C

Maximum Operating Pressure:
10 bar

Dimensions

Ø	A	A1	A2	B	C	C1	CH	CH1	D	D1	D2	E	E1	F	G	G1	H	Ø	L	L0	L1	L2	M	N	P	Q
32	10	7	10	30	26	16	10	6	M10 x 1.25	12	15	32.5	5	22	G1/8	M6	47	32	120	94	74	146	9	4.5	6	4
40	12	9	10	35	30	20	13	6	M12 x 1.25	16	19	38	5	24	G1/4	M6	53	40	135	105	81	165	9	4.5	6	4
50	14	14	10	40	37	25	17	8	M16 x 1.5	20	19	46.5	5	32	G1/4	M8	65	50	143	106	78	180	12	5.5	6	6
63	16	14	10	45	37	25	17	8	M16 x 1.5	20	23	56.5	5	32	G3/8	M8	75	63	158	121	89	195	12	5.5	6	6
80	18	12	12	45	46	33	22	10	M20 x 1.5	25	23	72	8	40	G3/8	M10	95	80	174	128	92	220	16	5.5	10	7
100	20	14	12	55	51	38	22	10	M20 x 1.5	25	27	89	8	40	G1/2	M10	115	100	189	138	98	240	16	5.5	10	7
125	25	21	10	60	65	45	27	12	M27 x 2	32	27	110	8	54	G1/2	M12	140	125	225	160	110	290	19	6.5	12	8



More Sizes Available
Up to 320mm diameter
& 2600mm stroke



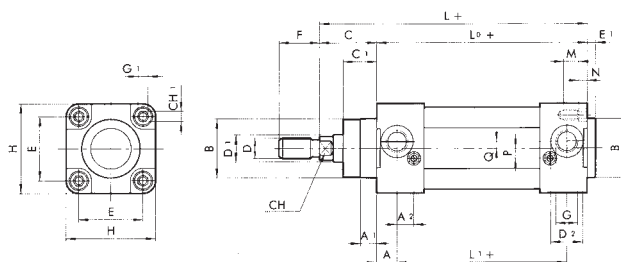
Magnetic & Cushioned

9195	Diameter (mm)	Stroke (mm)
1213320025CN	32	25
1213320050CN	32	50
1213320080CN	32	80
1213320100CN	32	100
1213320125CN	32	125
1213320160CN	32	160
1213320200CN	32	200
1213320250CN	32	250
1213320320CN	32	320
1213320400CN	32	400
1213320500CN	32	500
1213400025CN	40	25
1213400050CN	40	50
1213400080CN	40	80
1213400100CN	40	100
1213400125CN	40	125
1213400160CN	40	160

9195	Diameter (mm)	Stroke (mm)
1213400200CN	40	200
1213400250CN	40	250
1213400320CN	40	320
1213400400CN	40	400
1213400500CN	40	500
1213500025CN	50	25
1213500050CN	50	50
1213500080CN	50	80
1213500100CN	50	100
1213500125CN	50	125
1213500160CN	50	160
1213500200CN	50	200
1213500250CN	50	250
1213500320CN	50	320
1213500400CN	50	400
1213500500CN	50	500

ISO 15552 CYLINDERS

Double Acting Cylinders



More Sizes Available
Up to 320mm diameter
& 2600mm stroke



Magnetic & Cushioned

9195	Diameter (mm)	Stroke (mm)
1213630025CN	63	25
1213630050CN	63	50
1213630080CN	63	80
1213630100CN	63	100
1213630125CN	63	125
1213630160CN	63	160
1213630200CN	63	200
1213630250CN	63	250
1213630320CN	63	320
1213630400CN	63	400
1213630500CN	63	500
1213800025AN	80	25
1213800050AN	80	50
1213800080AN	80	80
1213800100AN	80	100
1213800125AN	80	125
1213800160AN	80	160
1213800200AN	80	200
1213800250AN	80	250
1213800320AN	80	320
1213800400AN	80	400

9195	Diameter (mm)	Stroke (mm)
1213800500AN	80	500
1213A10025AN	100	25
1213A10050AN	100	50
1213A10080AN	100	80
1213A10100AN	100	100
1213A10125AN	100	125
1213A10160AN	100	160
1213A10200AN	100	200
1213A10250AN	100	250
1213A10320AN	100	320
1213A10400AN	100	400
1213A10500AN	100	500
1213A20100AN	125	100
1213A20125AN	125	125
1213A20160AN	125	160
1213A20200AN	125	200
1213A20250AN	125	250
1213A20320AN	125	320
1213A20400AN	125	400
1213A20500AN	125	500



For **Metal Work Standard Series FRL's 'Syntesi'**
see pages **668-672**



ISO 15552 CYLINDERS

Double Acting Cylinders

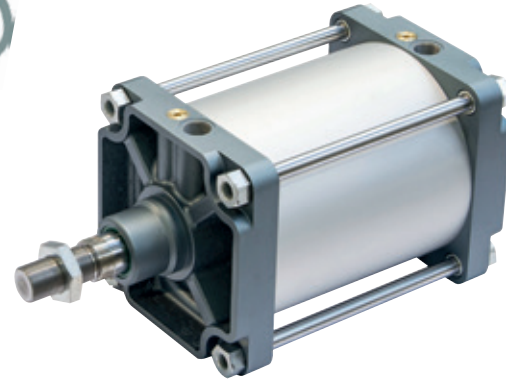
Technical Data for ISO 15552 Cylinders Ø 160-320

- Design: round barrel with tie rods
- Sensor magnet: all versions come complete with magnet
- Piston rod material: C45 steel, chromed
- Piston seal: NBR
- Options: available with mounted intermediate hinge

Temperature Range:
10°C to +80°C

Maximum Operating Pressure:
10 bar

More Sizes Available
Up to 320mm diameter
& 2600mm stroke



Magnetic & Cushioned

9195	Diameter mm	Stroke mm
W1211600025	160	25
W1211600050	160	50
W1211600080	160	80
W1211600100	160	100
W1211600125	160	125
W1211600160	160	160
W1211600200	160	200
W1211600250	160	250
W1211600320	160	320
W1211600400	160	400
W1211600500	160	500
W1212000025	200	25
W1212000050	200	50
W1212000080	200	80
W1212000100	200	100
W1212000125	200	125
W1212000160	200	160
W1212000200	200	200
W1212000250	200	250
W1212000320	200	320
W1212000400	200	400
W1212000500	200	500

9195	Diameter mm	Stroke mm
W1212500025	250	25
W1212500050	250	50
W1212500080	250	80
W1212500100	250	100
W1212500125	250	125
W1212500160	250	160
W1212500200	250	200
W1212500250	250	250
W1212500320	250	320
W1212500400	250	400
W1212500500	250	500
W1213200025	320	25
W1213200050	320	50
W1213200080	320	80
W1213200100	320	100
W1213200125	320	125
W1213200160	320	160
W1213200200	320	200
W1213200250	320	250
W1213200320	320	320
W1213200400	320	400
W1213200500	320	500

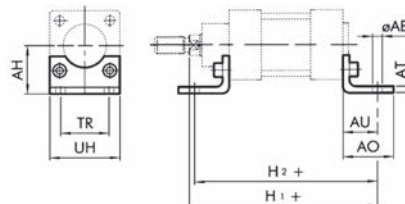
For dimensions and further technical information refer to sales team.

ISO 15552 CYLINDERS ACCESSORIES

Foot Mounting

To suit ISO 15552 Cylinders

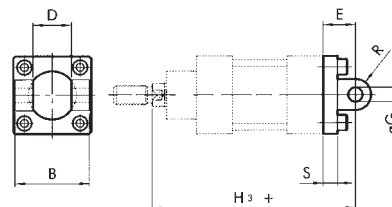
9146	∅	AB	AH	AO	AT	AU	TR	UH	H1	H2
W0950322001	32	7	32	35	4	24	32	45	144	142
W0950402001	40	9	36	43	4	28	36	52	163	161
W0950502001	50	9	45	47	4	32	45	65	175	170
W0950632001	63	9	50	47	6	32	50	75	190	185
W0950802001	80	12	63	61	6	41	63	95	215	210
W0951002001	100	14	71	66	6	41	75	115	230	220
W0951252001	125	16	90	60	7	45	90	140	270	250
W0951602001	160	18	115	80	10	60	115	180	319	300
W0952002001	200	22	135	100	10	70	135	220	345	320



Female Hinge

To suit ISO 15552 Cylinders

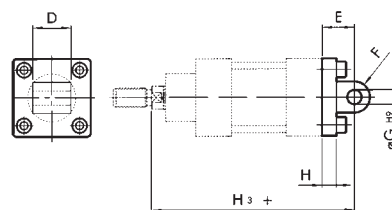
9146	∅	B	D	E	∅G	H3	R	S
W0950322003	32	45	26	22	10	142	11	10
W0950402003	40	52	28	25	12	160	13	10
W0950502003	50	60	32	27	12	170	13	12
W0950632003	63	70	40	32	16	190	17	12
W0950802003	80	90	50	36	16	210	17	16
W0951002003	100	110	60	41	20	230	21	16
W0951252003	125	130	70	50	25	275	26	20
W0951602003	160	170	90	55	30	314	25	20
W0952002003	200	170	90	60	30	335	25	25



Male Hinge

To suit ISO 15552 Cylinders

9146	∅	D	E	F	∅G	H	H2
W0950322004	32	26	22	11	10	10	142
W0950402004	40	28	25	13	12	10	160
W0950502004	50	32	27	13	12	12	170
W0950632004	63	40	32	17	16	12	190
W0950802004	80	50	36	17	16	16	210
W0951002004	100	60	41	21	20	16	230
W0951252004	125	70	50	26	25	20	1590
W0951602004	160	90	55	25	30	20	314
W0952002004	200	90	60	25	30	25	335

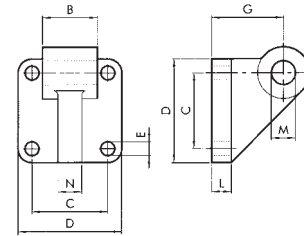


ISO 15552 CYLINDERS ACCESSORIES

Male 90° Hinge

To suit ISO 15552 Cylinders

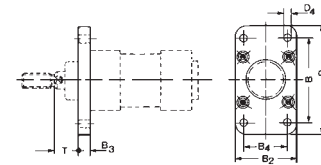
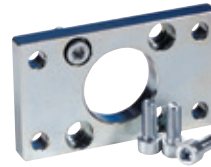
9146	Ø	B	C	D	E	G	L	M	N
W0950322108	32	25.5	25	45	7	32	10	10	10
W0950402108	40	27.5	32	52	7	36	10	12	12
W0950502108	50	31.5	32	65	9	45	12	12	12
W0950632108	63	39.5	40	75	9	50	16	16	15
W0950802108	80	49.5	40	95	11	63	16	16	15
W0951002108	100	59.5	50	115	11	21	20	20	22
W0951252008	125	70	50	25	14	90	16	25	22



Flange Mounting

To suit ISO 15552 Cylinders

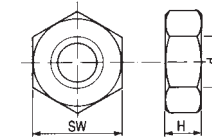
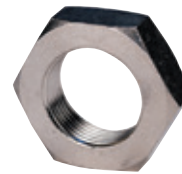
9146	Ø	B	B1	B2	B3	B4	ØD4	T
W0950322002	32	64	80	50	10	32	7	16
W0950402002	40	72	90	55	10	36	9	20
W0950502002	50	90	110	65	12	45	9	25
W0950632002	63	100	120	75	12	50	9	25
W0950802002	80	126	153	95	16	63	12	30
W0951002002	100	150	178	115	16	75	14	35
W0951252002	125	180	220	140	20	90	16	45
W0951602002	160	230	270	180	20	115	18	59
W0952002002	200	270	312	225	25	135	22	70



Piston Rod Nut

To suit ISO 15552 Cylinders

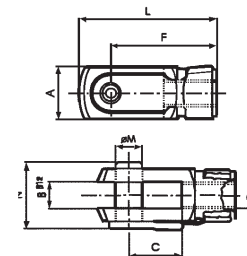
9146	Ø	D	H	SW
W0950322010	32	M10 x 1.25	6	17
W0950402010	40	M12 x 1.25	7	19
W0950502010	50-63	M16 x 1.5	8	24
W0950802010	80-100	M20 x 1.5	9	30
W0951252010	125	M27 x 2	12	74
W0951602010	160/200	M36 x 2	14	55



Fork Clevis

To suit ISO 15552 Cylinders

9146	Ø	M	A	B	C	L	F	D
W0950322020	32	10	20	10	20	52	40	M10 x 1.25
W0950402020	40	12	24	12	24	62	48	M12 x 1.25
W0950502020	50/63	16	32	16	32	83	64	M16 x 1.5
W0950802020	80/100	20	40	20	40	106	80	M20 x 1.5
W0951252020	125	30	55	30	55	148	110	M27 x 2
W0951602008	160/200	90	63	154	18	140	20	30
W0951602020	160/200	35	70	35	72	188	144	M36 x 2

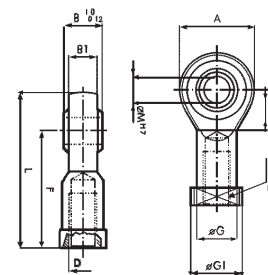


ISO 1552 CYLINDERS ACCESSORIES

Spherical Rod Eye

To suit ISO 1552 Cylinders

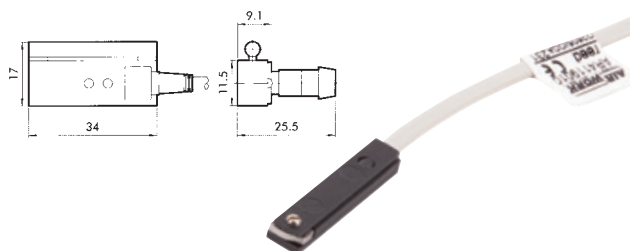
9146	Ø	M	B1	B	A	L	F	D	CH	ØG
W0950322025	32	10	10.5	14	28	57	43	M10 x 1.25	17	15
W0950402025	40	12	12	16	32	66	50	M12 x 1.25	19	17.5
W0950502025	50/63	16	15	21	42	85	64	M16 x 1.5	22	22
W0950802025	80/100	20	18	25	50	102	77	M20 x 1.5	30	27.5
W0951252025	125	30	25	37	70	145	110	M27 x 2	41	40
W0952002025	160/200	35	28	43	80	165	125	M36 x 2	58	46



Reed Switch

Technical Data

Type		Contact
Maximum AC/DC voltage	V	Reed + varistor + LED 2 wires Reed + varistor + LED NO 220 ISO cylinder
Maximum current at +25°C	mA	1,000
Power with inductive load	VA	15
Power with resistive load	Watt	50
Switch-on time	M sec	1.2
Switch-off time	M sec	0.1
Cable length		2.5m
Cable material		Soft PVC
Switch-on point	Gauss	110
Switch-off point	Gauss	95
Contact resistance		0.1



To suit ISO 1552 Cylinders

9146	Description
W0950000201	Reed Sensor ACC.DSM2-C525

Reed Switch Bracket



To suit ISO 1552 Cylinders

9146	Description	Cylinder Diameter
W0950000711	Bracket ACC. D.32 DST 80	32-40
W0950000712	Bracket ACC. D.50 DST 81	50-63
W0950000713	Bracket ACC. D.80-100-125 DST 82	80-125
0951602093	Bracket ACC. D.160-200	160-200

Seal Kits

Other variants available on request



To suit ISO 1552 Cylinders

9146	Ø	Material
0090320502	32	NBR
0090400502	40	NBR
0090500502	50	NBR
0090630502	63	NBR
0090800502	80	NBR
0091000502	100	NBR
0091250502	125	NBR

Sensor Tester with M8 & M12 Connections

This sensor tester features the following:

- A green light and acoustic signal indicating correct operation
- Sensors can be checked without having to be disassembled
- M8 and M12 connections and terminal board for direct connection to the wires
- PNP or NPN switching button

Technical Data

- Container material: PA 6.6 blue
- Degree of protection: IP00
- Connections: M8 and M12 plug-socket type with 40cm cable
- Additional connections: three terminals for wire connection
- Power supply: 9V DC (battery type 6LR61)
- Internal voltage: 15V DC
- Green light: tester switched on
- Yellow light: sensor in operation
- Red light: battery fla



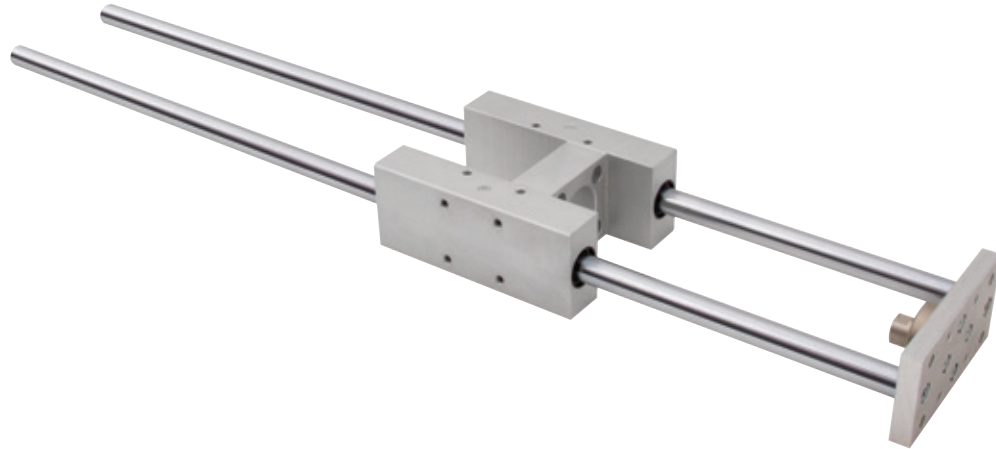
Automatic Switch Off

9146	Dimensions (mm)
W0950060000	63 x 88 x 24

CYLINDER GUIDE UNITS FOR ISO15552 CYLINDER

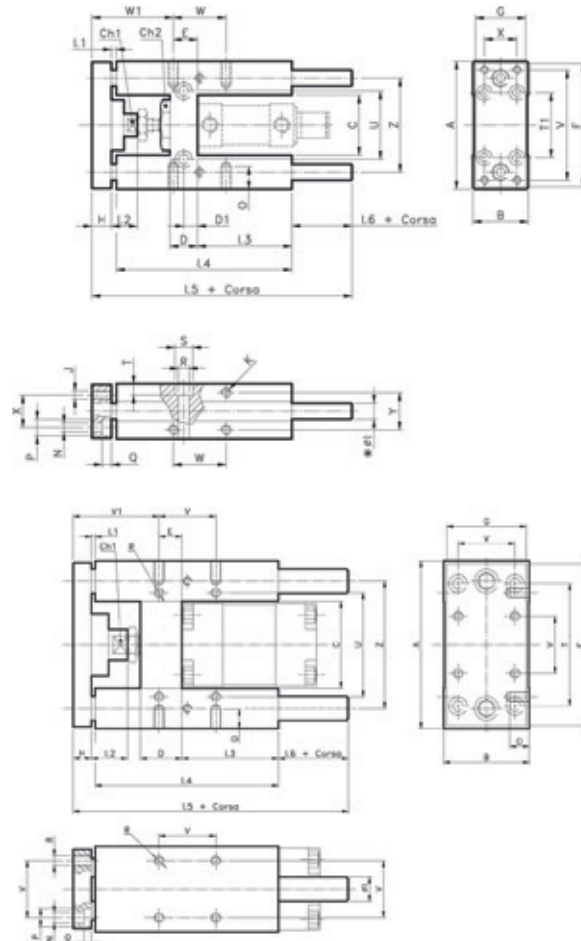
Profile (GD4) & (GDM)

More Sizes Available
Up to 100mm diameter
& 1000mm stroke



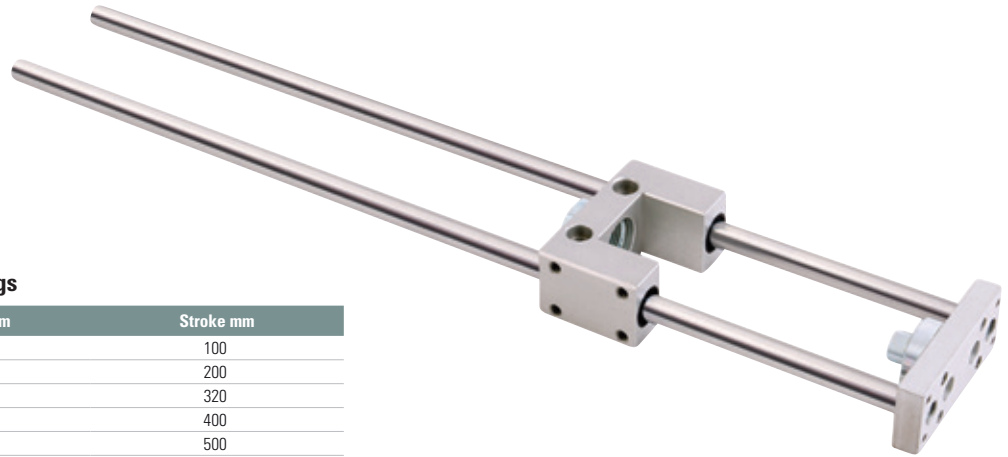
With Self-lubricating Bushings

9147	Diameter mm	Stroke mm
HGU020-0100	20	100
HGU020-0200	20	200
HGU020-0250	20	250
HGU020-0320	20	320
HGU020-0400	20	400
HGU020-0500	20	500
HGU032-0100	32	100
HGU032-0200	32	200
HGU032-0250	32	250
HGU032-0320	32	320
HGU032-0400	32	400
HGU032-0500	32	500
HGU040-0100	40	100
HGU040-0200	40	200
HGU040-0250	40	250
HGU040-0320	40	320
HGU040-0400	40	400
HGU040-0500	40	500
HGU050-0100	50	100
HGU050-0200	50	200
HGU050-0250	50	250
HGU050-0320	50	320
HGU050-0400	50	400
HGU050-0500	50	500
HGU063-0100	63	100
HGU063-0200	63	200
HGU063-0250	63	250
HGU063-0320	63	320
HGU063-0400	63	400
HGU063-0500	63	500



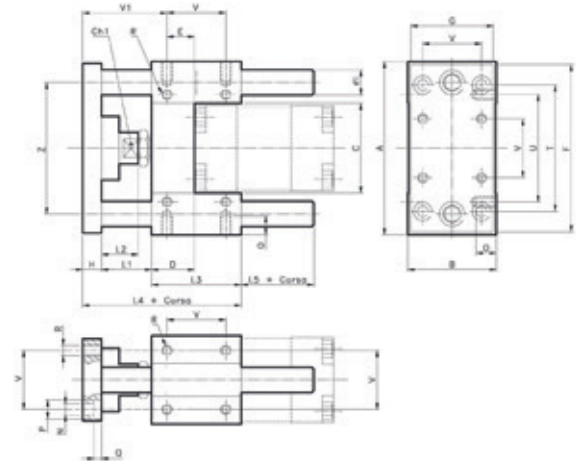
CYLINDER GUIDE UNITS FOR ISO15552 CYLINDER

Profile (GD4) & (GDM)



With Self-lubricating Bushings

9147	Diameter mm	Stroke mm
UGU020-0100	20	100
UGU020-0200	20	200
UGU020-0320	20	320
UGU020-0400	20	400
UGU020-0500	20	500
UGU032-0100	32	100
UGU032-0200	32	200
UGU032-0250	32	250
UGU032-0320	32	320
UGU032-0400	32	400
UGU032-0500	32	500
UGU040-0100	40	100
UGU040-0200	40	200
UGU040-0250	40	250
UGU040-0320	40	320
UGU040-0400	40	400
UGU040-0500	40	500
UGU050-0100	50	100
UGU050-0200	50	200
UGU050-0250	50	250
UGU050-0320	50	320
UGU050-0400	50	400
UGU050-0500	50	500
UGU063-0100	63	100
UGU063-0200	63	200
UGU063-0250	63	250
UGU063-0320	63	320
UGU063-0400	63	400
UGU063-0500	63	500

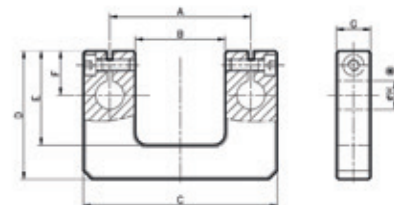


Rear End Plate



To suit Guide Units

9147	Description
KG3043.20	For 20/25mm Guide Units
KG3043.32	For 32mm Guide Units
KG3043.40	For 40mm Guide Units
KG3043.50	For 50mm Guide Units
KG3043.63	For 63mm Guide Units



ISO 15552 CYLINDERS, SERIES HCR (HIGH CORROSION RESISTANCE)

Uses stainless steel fixing

In some applications, cylinders are exposed to aggressive environments (e.g. the dairy, fruit and vegetable, and food industry) or to substances and washings with aggressive detergents (e.g. caustic soda, hydrochloric acid and lactic acid). Under these conditions, the HCR series cylinders ensure better corrosion resistance.

Cylinders made to ISO 15552, designed and built with materials and/or surface treatments that are highly resistant to corrosion

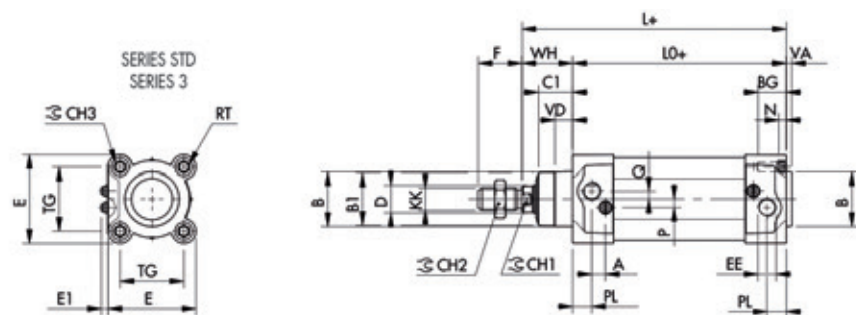
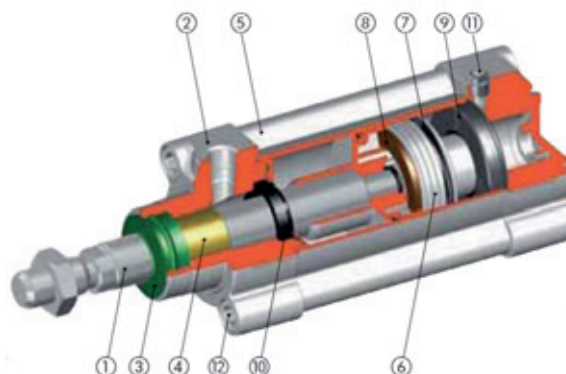
They come in various versions and with specific range of accessories

- with or without magnet
- with single or through piston rod

Also available with liner in the STD series or series 3



1.	Piston rod: AISI 316, thickness chromed
2.	Head: anodised pressure die-cast aluminium, epoxy-vinyl ester and epoxy-resin powder coating
3.	Piston rod gasket: special polyurethane
4.	Guide bushing: steel strip with bronze and PTFE insert
5.	Barrel: drawn anodised calibrated aluminium
6.	Semi-piston: made of self-lubricating technopolymer with built-in cushioning olives (aluminium with technopolymer shoe for Ø 80, 10 and 125)
7.	Piston gasket: NBR
8.	Magnet: plastoferrite
9.	Buffer + static O-rings: NBR
10.	Cushioning gasket: NBR
11.	Needle: AISI 316, screws: AISI 316
12.	Screws: AISI 316



Ø	PL	VD	A	B	B1	WH	C1	CH1	CH2	CH3	KK	D	TG	VA	F	EE	RT	E	E1 min	E1 max	L	LO	ZM	BG	N	P	Q
32	10	6.5	10	30	28	26	16	10	17	6	M10 x 1.25	12	32.5	4	22	G1/8	M6	46	5.5	8.4	120	94	146	14.5	4.5	6	4
40	12	8	10	35	33	30	20	13	19	6	M12 x 1.25	16	38	4	24	G1/4	M6	54	4.5	8.4	135	105	165	14.5	4.5	6	4
50	14	13	10	40	38	37	25	17	24	8	M16 x 1.5	20	46.5	4	32	G1/4	M8	64.5	4.5	8.9	143	106	180	17.5	5.5	6	6
63	16	14	10	45	40	37	25	17	24	8	M16 x 1.5	20	56.5	4	32	G3/8	M8	75.5	4.1	9.5	158	121	195	17.5	5.5	6	6
80	18	12	12	45	43	46	33	22	30	10	M20 x 1.5	25	72	4	40	G3/8	M10	94	6.2	12.2	174	128	220	21.5	5.5	10	7
100	20	14	12	55	49	51	38	22	30	10	M20 x 1.5	25	89	4	40	G1/2	M10	111	6.7	12.2	189	138	240	21.5	5.5	10	7
125	25	20	10	60	54	65	45	27	41	12	M27 x 2	32	110	6	54	G1/2	M12	135	5.7	12.7	225	160	290	25.5	6.5	12	8

ISO 15552 CYLINDERS, SERIES HCR (HIGH CORROSION RESISTANCE)

ISO 15552 HCR Double Acting Cylinders

Uses stainless steel accessories



Magnetic & Cushioned

9195	Diameter mm	Stroke mm
1213320025BL	32	25
1213320050BL	32	50
1213320080BL	32	80
1213320100BL	32	100
1213320125BL	32	125
1213320160BL	32	160
1213320200BL	32	200
1213320250BL	32	250
1213320320BL	32	320
1213320400BL	32	400
1213320500BL	32	500
1213400025BL	40	25
1213400050BL	40	50
1213400080BL	40	80
1213400100BL	40	100
1213400125BL	40	125
1213400160BL	40	160
1213400200BL	40	200
1213400250BL	40	250
1213400320BL	40	320
1213400400BL	40	400
1213400500BL	40	500
1213500025BL	50	25
1213500050BL	50	50
1213500080BL	50	80
1213500100BL	50	100
1213500125BL	50	125
1213500160BL	50	160
1213500200BL	50	200
1213500250BL	50	250
1213500320BL	50	320
1213500400BL	50	400
1213500500BL	50	500
1213630025BL	63	25
1213630050BL	63	50
1213630080BL	63	80
1213630100BL	63	100

9195	Diameter mm	Stroke mm
1213630125BL	63	125
1213630160BL	63	160
1213630200BL	63	200
1213630250BL	63	250
1213630320BL	63	320
1213630400BL	63	400
1213630500BL	63	500
1213800025WL	80	25
1213800050WL	80	50
1213800080WL	80	80
1213800100WL	80	100
1213800125WL	80	125
1213800160WL	80	160
1213800200WL	80	200
1213800250WL	80	250
1213800320WL	80	320
1213800400WL	80	400
1213800500WL	80	500
1213A10025WL	100	25
1213A10050WL	100	50
1213A10080WL	100	80
1213A10100WL	100	100
1213A10125WL	100	125
1213A10160WL	100	160
1213A10200WL	100	200
1213A10250WL	100	250
1213A10320WL	100	320
1213A10400WL	100	400
1213A10500WL	100	500
1213A20100WL	125	100
1213A20125WL	125	125
1213A20160WL	125	160
1213A20200WL	125	200
1213A20250WL	125	250
1213A20320WL	125	320
1213A20400WL	125	400
1213A20500WL	125	500

For correct magnetic sensors & fitting
contact sales department

ISO 15552 AIR CYLINDERS, ALL STAINLESS STEEL

Technical Specifications

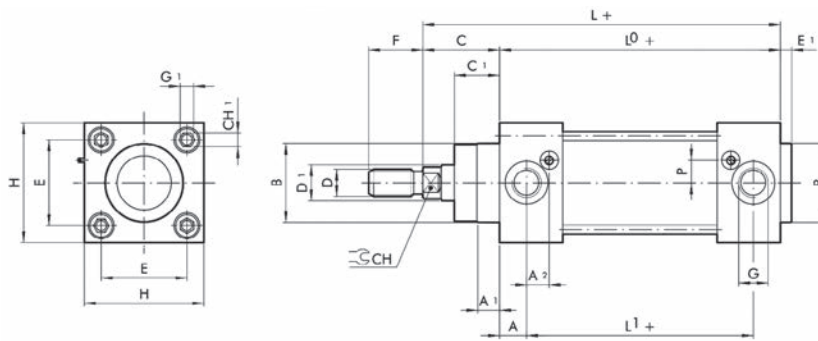
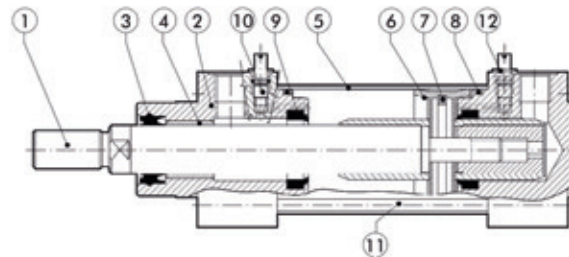
Fluid: lubricated or non-lubricated air

Temperature Range:
10°C to +80°C

Maximum Operating Pressure:
10 bar



1. Piston rod: AISI 316 steel
2. Head: AISI 304 steel
3. Piston rod gasket: polyurethane or FKM/FPM
4. Guide bushing: sintered bronze
5. Barrel: AISI 304 steel
6. Enbloc gasket: NBR or FKM/FPM
7. Magnet: plastoferrite
8. Static O-rings: NBR or FKM/FPM
9. Cushioning gasket: polyurethane or FKM/FPM
10. Cushioning needle: AISI 304 steel
11. Tie rod: AISI 316 steel
12. Needle-retaining ring: technopolymer



Ø	A	A ₁	A ₂	B	C	C ₁	CH	CH ₁	D	D ₁	E	E ₁	F	G	G ₁	H	L	L ₀	L ₁	L ₂	P
32	13	9	11.3	30	26	18	10	6	M10 x 1.25	12	32.5	4	22	G1/8	M6	50	120	94	68	146	6
40	14	9	13	35	30	22	13	6	M12 x 1.25	16	38	4	24	G1/4	M6	55	135	105	77	165	8
50	14	9	12.7	40	37	25.5	17	8	M16 x 1.5	20	46.5	4	32	G1/4	M8	65	143	106	78	180	11.8
63	16	9	15.8	45	37	25	17	8	M16 x 1.5	20	56.5	4	32	G3/8	M8	75	158	121	89	195	11.7
80	17	10	16.3	45	46	35	22	-	M20 x 1.5	25	72	4	40	G3/8	M10	95	174	128	94	220	15.5
100	18	10	15.5	55	51	38	22	-	M20 x 1.5	25	89	4	40	G1/2	M10	110	189	138	102	240	15.5
125	18	11	20	60	65	46	27	-	M27 x 2	32	110	6	54	G1/2	M12	140	225	160	124	290	15

ISO 15552 AIR CYLINDERS, ALL STAINLESS STEEL

ISO 15552 Cylinders, Double Acting

Technical Specifications

Fluid: lubricated or non-lubricated air

 **Temperature Range:**
10°C to +80°C

 **Maximum Operating Pressure:**
10 bar



Magnetic

9146	Diameter mm	Stroke mm
W1840320025	32	25
W1840320050	32	50
W1840320080	32	80
W1840320100	32	100
W1840320125	32	125
W1840320160	32	160
W1840320200	32	200
W1840320250	32	250
W1840320320	32	320
W1840320400	32	400
W1840320500	32	500
W1840400025	40	25
W1840400050	40	50
W1840400080	40	80
W1840400100	40	100
W1840400125	40	125
W1840400160	40	160
W1840400200	40	200
W1840400250	40	250
W1840400320	40	320
W1840400400	40	400
W1840400500	40	500
W1840500025	50	25
W1840500050	50	50
W1840500080	50	80
W1840500100	50	100
W1840500125	50	125
W1840500160	50	160
W1840500200	50	200
W1840500250	50	250
W1840500320	50	320
W1840500400	50	400
W1840500500	50	500

9146	Diameter mm	Stroke mm
W1840630025	63	25
W1840630050	63	50
W1840630080	63	80
W1840630100	63	100
W1840630125	63	125
W1840630160	63	160
W1840630200	63	200
W1840630250	63	250
W1840630320	63	320
W1840630400	63	400
W1840630500	63	500
W1840800025	80	25
W1840800050	80	50
W1840800080	80	80
W1840800100	80	100
W1840800125	80	125
W1840800160	80	160
W1840800200	80	200
W1840800250	80	250
W1840800320	80	320
W1840800400	80	400
W1840800500	80	500
W1841000025	100	25
W1841000050	100	50
W1841000080	100	80
W1841000100	100	100
W1841000125	100	125
W1841000160	100	160
W1841000200	100	200
W1841000250	100	250
W1841000320	100	320
W1841000400	100	400
W1841000500	100	500

ISO 15552 AIR CYLINDER ACCESSORIES, ALL STAINLESS STEEL



Foot Mounting



To suit ISO 15552 Cylinders

9146	To Suit Size mm
W095X322001	32
W095X402001	40
W095X502001	50
W095X632001	63
W095X802001	80
W095XA12001	100

Male 90° Hinge



To suit ISO 15552 Cylinders

9146	To Suit Size mm
W095X322008	32
W095X402008	40
W095X502008	50
W095X632008	63
W095X802008	80
W095XA12008	100

Male Hinge



To suit ISO 15552 Cylinders

9146	To Suit Size mm
W095X322004	32
W095X402004	40
W095X502004	50
W095X632004	63
W095X802004	80
W095XA12004	100

Female Hinge



To suit ISO 15552 Cylinders

9146	To Suit Size mm
W095X322003	32
W095X402003	40
W095X502003	50
W095X632003	63
W095X802003	80
W095XA12003	100



For Syntesi Metal Work
Standard Series FRL's
see page 666



ISO 15552 AIR CYLINDER ACCESSORIES, ALL STAINLESS STEEL

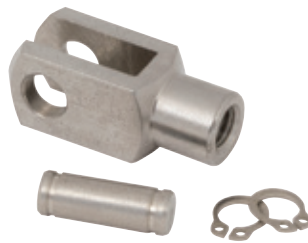
Hinge Pin



To suit ISO 15552 Cylinders

9146	To Suit Size mm
W095X322050	32
W095X402050	40
W095X502050	50
W095X632050	63
W095X802050	80
W095XA12050	100

Fork Clevis



To suit ISO 15552 Cylinders

9146	To Suit Size mm	Thread
W095X322020	25/32	M10 x 1.25
W095X402020	40	M12 x 1.25
W095X502020	50/63	M16 x 1.5
W095X802020	80/100	M20 x 1.5

Intermediate Hinge



To suit ISO 15552 Cylinders

9146	To Suit Size mm
W095X322007	32
W095X402007	40
W095X502007	50
W095X632007	63
W095X802007	80
W095XA12007	100

Flange



To suit ISO 15552 Cylinders

9146	To Suit Size mm
W095X322002	32
W095X402002	40
W095X502002	50
W095X632002	63
W095X802002	80
W095XA12002	100

Rod Nuts



To suit ISO 15552 Cylinders

9146	To Suit Size	Thread
W095X322011	25/32	M10 x 1.25
W095X402011	40	M12 x 1.25
W095X502011	50/63	M16 x 1.5
W095X802011	80/100	M20 x 1.5

Reed Switch



To suit ISO 15552 Cylinders

9146	Thread
W0952022180	With Moulded Cable
W0952028184	With M8 Connection

Mounting for Reed Switch



To suit ISO 15552 Cylinders

9146
W0950001100

ISO 15552 CYLINDERS & MOUNTINGS



ISO 15552 Cylinders

- Cylinder conforms to ISO 15552
- High performance adaptive cushioning system "ACS"
- Polyurethane seals ensure efficient low friction operation and long life
- Switches can be mounted flush with the profile barrel
- Comprehensive range of standard mountings

Medium: Compressed air, filtered,

lubricated or non-lubricated

Operation: Double acting, adjustable cushioning.

Profile: Anodised aluminium

Piston Rod: Stainless steel (martensitic)

Piston Rod Seals: Polyurethane

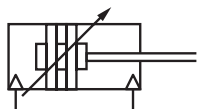
Piston Seals: Polyurethane

O-Rings: Nitrile Rubber

End Covers: Pressure diecast aluminium

Working Temperature:
-20°C to +80°C

Working Pressure:
1 to 16 bar



PROFILE BARREL



Double Acting, 8020 Series

0036	Bore mm	Stroke mm	Thread
PRA/802032/M/25	32	25	1/8"
PRA/802032/M/50	32	50	1/8"
PRA/802032/M/80	32	80	1/8"
PRA/802032/M/100	32	100	1/8"
PRA/802032/M/125	32	125	1/8"
PRA/802032/M/160	32	160	1/8"
PRA/802032/M/200	32	200	1/8"
PRA/802032/M/250	32	250	1/8"
PRA/802032/M/320	32	320	1/8"
PRA/802040/M/50	40	50	1/4"
PRA/802040/M/80	40	80	1/4"
PRA/802040/M/100	40	100	1/4"
PRA/802040/M/160	40	160	1/4"
PRA/802040/M/200	40	200	1/4"
PRA/802050/M/25	50	25	1/4"
PRA/802050/M/50	50	50	1/4"
PRA/802050/M/80	50	80	1/4"
PRA/802050/M/100	50	100	1/4"
PRA/802050/M/125	50	125	1/4"
PRA/802050/M/160	50	160	1/4"
PRA/802050/M/200	50	200	1/4"
PRA/802050/M/250	50	250	1/4"
PRA/802050/M/320	50	320	1/4"
PRA/802063/M/25	63	25	3/8"
PRA/802063/M/50	63	50	3/8"
PRA/802063/M/80	63	80	3/8"
PRA/802063/M/100	63	100	3/8"
PRA/802063/M/125	63	125	3/8"
PRA/802063/M/160	63	160	3/8"
PRA/802063/M/200	63	200	3/8"
PRA/802063/M/250	63	250	3/8"
PRA/802063/M/320	63	320	3/8"
PRA/802080/M/25	80	25	3/8"
PRA/802080/M/50	80	50	3/8"
PRA/802080/M/80	80	80	3/8"
PRA/802080/M/160	80	160	3/8"
PRA/802080/M/200	80	200	3/8"
PRA/802080/M/250	80	250	3/8"
PRA/802100/M/50	100	50	1/2"
PRA/802100/M/100	100	100	1/2"
PRA/802100/M/125	100	125	1/2"
PRA/802100/M/160	100	160	1/2"
PRA/802100/M/250	100	250	1/2"
PRA/802100/M/320	100	320	1/2"

Tech Sheet 71373

Self adjusting cushioning feature

ROUND BARREL



Tie rod double acting cylinder, round barrel RA/802 Series

0036	Bore mm	Stroke mm	Thread
RA/802032/M/25	32	25	1/8"
RA/802032/M/50	32	50	1/8"
RA/802032/M/80	32	80	1/8"
RA/802032/M/100	32	100	1/8"
RA/802032/M/125	32	125	1/8"
RA/802032/M/160	32	160	1/8"
RA/802032/M/200	32	200	1/8"
RA/802032/M/250	32	250	1/8"
RA/802032/M/320	32	320	1/8"
RA/802040/M/25	40	25	1/4"
RA/802040/M/50	40	50	1/4"
RA/802040/M/80	40	80	1/4"
RA/802040/M/100	40	100	1/4"
RA/802040/M/125	40	125	1/4"
RA/802040/M/200	40	200	1/4"
RA/802040/M/250	40	250	1/4"
RA/802040/M/320	40	320	1/4"
RA/802050/M/25	50	25	1/4"
RA/802050/M/50	50	50	1/4"
RA/802050/M/80	50	80	1/4"
RA/802050/M/160	50	160	1/4"
RA/802050/M/200	50	200	1/4"
RA/802050/M/250	50	250	1/4"
RA/802063/M/25	63	25	3/8"
RA/802063/M/50	63	50	3/8"
RA/802063/M/100	63	100	3/8"
RA/802063/M/250	63	250	3/8"
RA/802063/M/320	63	320	3/8"
RA/802080/M/25	80	25	3/8"
RA/802080/M/50	80	50	3/8"
RA/802080/M/80	80	80	3/8"
RA/802080/M/100	80	100	3/8"
RA/802080/M/160	80	160	3/8"
RA/802080/M/200	80	200	3/8"

Tech Sheet 71751

ISO 15552 CYLINDERS & MOUNTINGS



ISO 15552 Mountings



Female Piston Rod Clevis

0036	Bore mm
QM/8025/25	25
QM/8050/25	50/63
QM/8080/25	80/100
Tech Sheet 10317	



Piston Rod Eye

0036	Bore mm
QM/8050/32	50/63
QM/8080/32	80/100
Tech Sheet 10317	



Foot Mounting

0036	Bore mm
QA/8032/21	32
QA/8050/21	50
QA/8063/21	63
QA/8080/21	80
QA/8100/21	100
Tech Sheet 10317	



Rear Swivel Flange

0036	Bore mm
QA/8032/23	32
QA/8040/23	40
QA/8050/23	50
QA/8063/23	63
QA/8080/23	80
QA/8100/23	100
Tech Sheet 10317	



Standard Service Kits

0036	Bore mm
QA/8032/00	32
QA/8040/00	40
QA/8050/00	50
QA/8063/00	63
QA/8100/00	100
Tech Sheet 10317	



Reed Switch

0036	Length Metre
M/50/LSU/2V	2
M/50/LSU/5V	5
M/50/LSU/10V	10
Tech Sheet 10317	

IMPERIAL CYLINDERS



Imperial Cylinders

- Large range of bore sizes – ideal for a wide variety of industrial applications
- Extensive choice of mountings
- Long established design – proven ruggedness and reliability
- Adjustable cushioning

Working Temperature:
-5°C to +80°C

Working Pressure:
2 to 10 bar

Medium: Compressed air, filtered, lubricated or non-lubricated

Operation: Double acting, adjustable cushioning

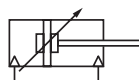
Piston Rod and Tie Rods: Stainless steel (martensitic)

Barrel: Anodised aluminium

Piston and End Covers:

Aluminium

Seals: Nitrile



Double Acting Imperial RM/900

0036	Bore Inch	Stroke mm	Thread
RM/925/75	2.1/2"	75	G3/8
RM/925/100	2.1/2"	100	G3/8
RM/925/150	2.1/2"	150	G3/8
RM/930/75	3"	75	G3/8
RM/930/100	3"	100	G3/8
RM/930/150	3"	150	G3/8
RM/930/300	3"	300	G3/8
RM/940/100	4"	100	G3/8
RM/940/150	4"	150	G3/8
RM/940/300	4"	300	G3/8
Tech Sheet 20131			

In-line Positioner Cylinders

Medium: Compressed air, filtered, non-lubricated.

Response time: 10 secs max. for 200mm stroke.

Working Temperature:
-20°C to +80°C

Working Pressure:
2 to 10 bar

Materials:

Piston Rod and Valve Spool: Stainless steel. Piston rod end and zero.

Adjuster: Zinc plated steel

Valve Bush: Brass cylinder barrel and piston.

Valve Body: Aluminium alloy



M/1525, M1540 - G1/4

0036	Bore Inch	Stroke mm
M/1525/75	2.1/2"	75
M/1525/125	2.1/2"	125
M/1525/200	2.1/2"	200
M/1540/75	4"	75
M/1540/125	4"	125
M/1540/200	4"	200
Tech Sheet 10360		

ISO 1552 CYLINDERS



Series 61, Double Acting Cylinders Aluminium Profile ISO 1555

- In compliance with ISO 15552 standards and with the previous DIN/ISO 6431 – VDMA 24562 standards.
- Rolled stainless steel rod
- Clean design with adjustable pneumatic cushioning
- Special designs available

Type of construction: with tie-rods (inside the profile)

Operation: double-acting, single-acting, tandem.

Low friction version: double-acting only.

Materials: standard = aluminium end-blocks and piston, rolled stainless steel AISI 420B rod, anodised aluminium tube, zinc-plated steel tie-rods and tie-rod nuts, PU seals. Low friction = standard materials with NBR piston seal and NBR rod seal (FKM rod seal on request).

Type of mounting: with front rear flange, foot mounting, with front/rear/centre/ swivel trunnion.

Strokes, min – max: 10 to 2500mm.


Speed: 10 to 1000mm/sec, no load (standard versions). 5 to 1000mm/sec, no load (low friction version).

Fluid: filtered air, without lubrication. For standard versions only: if lubricated air is used, it is recommended to use oil ISOVG32. Once applied the lubrication should never be interrupted.

Full range of ISO cylinders available including large bore (160, 200 and 250mm) and stainless steel options.

Non-stock strokes available on request.

 **Operating temperature:**
0°C to +80°C (with dry air: +20°C).

 **Operating pressure:**
1 to 10 bar (standard versions).
0.1 to 10 bar (low friction version).



G1/8", Ø32mm

0158	Stroke mm
61M2P032A0025	25
61M2P032A0050	50
61M2P032A0075	75
61M2P032A0080	80
61M2P032A0100	100
61M2P032A0125	125
61M2P032A0150	150
61M2P032A0160	160
61M2P032A0200	200
61M2P032A0250	250
61M2P032A0300	300
61M2P032A0320	320
61M2P032A0400	400
61M2P032A0500	500
61M2P032A0600	600
61M2P032A0700	700
61M2P032A0800	800
61M2P032A0900	900
61M2P032A1000	1000

Tech Sheet 1841

G1/4", Ø40mm

0158	Stroke mm
61M2P040A0025	25
61M2P040A0050	50
61M2P040A0075	75
61M2P040A0080	80
61M2P040A0100	100
61M2P040A0125	125
61M2P040A0150	150
61M2P040A0160	160
61M2P040A0200	200
61M2P040A0250	250
61M2P040A0300	300
61M2P040A0320	320
61M2P040A0400	400
61M2P040A0500	500
61M2P040A0600	600
61M2P040A0700	700
61M2P040A0800	800
61M2P040A0900	900
61M2P040A1000	1000

Tech Sheet 1841

G1/4", Ø50mm

0158	Stroke mm
61M2P050A0025	25
61M2P050A0050	50
61M2P050A0075	75
61M2P050A0080	80
61M2P050A0100	100
61M2P050A0125	125
61M2P050A0150	150
61M2P050A0160	160
61M2P050A0200	200
61M2P050A0250	250
61M2P050A0300	300
61M2P050A0320	320
61M2P050A0400	400
61M2P050A0500	500
61M2P050A0600	600
61M2P050A0800	800
61M2P050A0900	900
61M2P050A1000	1000

Tech Sheet 1841

G3/8", Ø63mm

0158	Stroke mm
61M2P063A0025	25
61M2P063A0050	50
61M2P063A0075	75
61M2P063A0080	80
61M2P063A0100	100
61M2P063A0125	125
61M2P063A0150	150
61M2P063A0160	160
61M2P063A0200	200
61M2P063A0250	250
61M2P063A0300	300
61M2P063A0320	320
61M2P063A0400	400
61M2P063A0500	500
61M2P063A0600	600
61M2P063A0700	700
61M2P063A0800	800
61M2P063A0900	900
61M2P063A1000	1000

Tech Sheet 1841

G3/8", Ø80mm

0158	Stroke mm
61M2P080A0025	25
61M2P080A0050	50
61M2P080A0075	75
61M2P080A0080	80
61M2P080A0100	100
61M2P080A0125	125
61M2P080A0150	150
61M2P080A0160	160
61M2P080A0200	200
61M2P080A0250	250
61M2P080A0300	300
61M2P080A0320	320
61M2P080A0500	500
61M2P080A0600	600
61M2P080A0700	700
61M2P080A0800	800
61M2P080A0900	900
61M2P080A1000	1000

Tech Sheet 1841

G1/2", Ø100mm

0158	Stroke mm
61M2P100A0025	25
61M2P100A0050	50
61M2P100A0080	80
61M2P100A0100	100
61M2P100A0125	125
61M2P100A0150	150
61M2P100A0160	160
61M2P100A0200	200
61M2P100A0250	250
61M2P100A0300	300
61M2P100A0320	320
61M2P100A0400	400
61M2P100A0500	500
61M2P100A0600	600
61M2P100A0700	700
61M2P100A0800	800
61M2P100A0900	900
61M2P100A1000	1000

Tech Sheet 1841

G1/2", Ø125mm

0158	Stroke mm
61M2P125A0025	25
61M2P125A0050	50
61M2P125A0075	75
61M2P125A0080	80
61M2P125A0100	100
61M2P125A0125	125
61M2P125A0150	150
61M2P125A0160	160
61M2P125A0200	200
61M2P125A0250	250
61M2P125A0300	300
61M2P125A0320	320
61M2P125A0400	400
61M2P125A0500	500
61M2P125A0600	600
61M2P125A0700	700
61M2P125A0800	800
61M2P125A0900	900
61M2P125A1000	1000

Tech Sheet 1841

ISO 1552 CYLINDERS



Series 63, Double Acting Cylinders ISO 1552

Series 63 pneumatic cylinders comply with the ISO 1552 standard. They have been developed to guarantee high performance whilst also offering significant reduction in weight.

The new adjustable pneumatic and mechanical cushioning system ensures Series 63 also reduces the noise caused by the impact of the piston on the end block.

Type of construction: profile (with screws)

Operation: double-acting.

Materials: aluminium end blocks, technopolymer (nominal bore 32mm) or aluminium (nominal bore 40 to 125mm) piston, rolled stainless steel AISI 420B piston rod, zinc-plated steel piston rod nut, anodised aluminium tube, NBR-PU rod, piston and cushion seals.

Type of Mounting: with front/rear flange, foot mounting, with centre/front/rear/swivel trunnion.

Strokes, min – max: 10 to 2500mm.

Non-stock strokes available on request.

Speed: 10 to 500mm/sec, no load.

Fluid: filtered air, in class 7.8.4, according to ISO 8573-1, without lubrication. If lubricated air is used, it is recommended to use oil ISOVG32. Once applied, the lubrication should never be interrupted.

Non-stock strokes available on request.

Operating temperature:
°C to +80°C (with dry air: -20°C).

Operating pressure:
1 to 10 bar.



G1/8", Ø32mm

0158	Stroke mm
63MP2C032A0025	25
63MP2C032A0050	50
63MP2C032A0075	75
63MP2C032A0080	80
63MP2C032A0100	100
63MP2C032A0125	125
63MP2C032A0150	150
63MP2C032A0160	160
63MP2C032A0200	200
63MP2C032A0250	250
63MP2C032A0300	300
63MP2C032A0320	320
63MP2C032A0400	400
63MP2C032A0500	500
63MP2C032A0600	600
63MP2C032A0700	700
63MP2C032A0800	800
63MP2C032A0900	900

Tech Sheet 68272

G1/4", Ø50mm

0158	Stroke mm
63MP2C050A0025	25
63MP2C050A0050	50
63MP2C050A0075	75
63MP2C050A0080	80
63MP2C050A0100	100
63MP2C050A0125	125
63MP2C050A0150	150
63MP2C050A0160	160
63MP2C050A0200	200
63MP2C050A0250	250
63MP2C050A0300	300
63MP2C050A0320	320
63MP2C050A0400	400
63MP2C050A0500	500
63MP2C050A0600	600
63MP2C050A0700	700
63MP2C050A0800	800
63MP2C050A0900	900

Tech Sheet 68272

G1/4", Ø40mm

0158	Stroke mm
63MP2C040A0025	25
63MP2C040A0050	50
63MP2C040A0075	75
63MP2C040A0080	80
63MP2C040A0100	100
63MP2C040A0125	125
63MP2C040A0150	150
63MP2C040A0160	160
63MP2C040A0200	200
63MP2C040A0250	250
63MP2C040A0300	300
63MP2C040A0320	320
63MP2C040A0400	400
63MP2C040A0500	500
63MP2C040A0600	600
63MP2C040A0700	700
63MP2C040A0800	800
63MP2C040A0900	900

Tech Sheet 68272

G3/8", Ø63mm

0158	Stroke mm
63MP2C063A0025	25
63MP2C063A0050	50
63MP2C063A0075	75
63MP2C063A0080	80
63MP2C063A0100	100
63MP2C063A0125	125
63MP2C063A0150	150
63MP2C063A0160	160
63MP2C063A0200	200
63MP2C063A0250	250
63MP2C063A0300	300
63MP2C063A0320	320
63MP2C063A0400	400
63MP2C063A0500	500
63MP2C063A0600	600
63MP2C063A0700	700
63MP2C063A0800	800
63MP2C063A0900	900

Tech Sheet 68272

G3/8", Ø80mm

0158	Stroke mm
63MP2C080A0025	25
63MP2C080A0050	50
63MP2C080A0075	75
63MP2C080A0080	80
63MP2C080A0100	100
63MP2C080A0125	125
63MP2C080A0150	150
63MP2C080A0160	160
63MP2C080A0200	200
63MP2C080A0250	250
63MP2C080A0300	300
63MP2C080A0320	320
63MP2C080A0400	400
63MP2C080A0500	500
63MP2C080A0600	600
63MP2C080A0700	700
63MP2C080A0800	800
63MP2C080A0900	900
63MP2C080A0985	985

Tech Sheet 68272

G1/2", Ø100mm

0158	Stroke mm
63MP2C100A0025	25
63MP2C100A0050	50
63MP2C100A0075	75
63MP2C100A0080	80
63MP2C100A0100	100
63MP2C100A0125	125
63MP2C100A0150	150
63MP2C100A0160	160
63MP2C100A0200	200
63MP2C100A0250	250
63MP2C100A0300	300
63MP2C100A0320	320
63MP2C100A0400	400
63MP2C100A0500	500
63MP2C100A0600	600
63MP2C100A0700	700
63MP2C100A0800	800
63MP2C100A0900	900

Tech Sheet 68272

G1/2", Ø125mm

0158	Stroke mm
63MP2C125A0025	25
63MP2C125A0050	50
63MP2C125A0075	75
63MP2C125A0080	80
63MP2C125A0100	100
63MP2C125A0125	125
63MP2C125A0150	150
63MP2C125A0160	160
63MP2C125A0200	200
63MP2C125A0250	250
63MP2C125A0300	300
63MP2C125A0320	320
63MP2C125A0400	400
63MP2C125A0500	500
63MP2C125A0600	600
63MP2C125A0700	700
63MP2C125A0800	800
63MP2C125A0900	900

Tech Sheet 68272

ISO 15552 CYLINDERS



Series 40, Double Acting Cylinders ISO 15552

Series 40 cylinders have been designed in compliance with ISO 15552 standards and with previous DIN/ISO 6431-VDMA 24562 standards.

A permanent magnet on the piston of these cylinders is able to send, through proximity switches mounted on the cylinder sliding axis, electrical signals to indicate its position.

Type of construction: with tie-rods.

Operation: double-acting.

Materials: aluminium end blocks and piston, rolled stainless steel AISI 420B (nominal bore 160-200mm) piston rod, zinc-plated piston rod nut, anodised aluminium tube, zinc-plated steel tie-rods and tie-rod nuts, NBR-PU rod, piston and cushion seals, brass rod scraper.

Operating temperature:
0°C to +80°C (with dry air: -20°C).

Operating pressure:
1 to 10 bar.

Type of Mounting: with tie-rods, with front/rear flange, foot mounting, with centre/front rear/swivel trunnion.

Strokes, min – max: 10 to 2500mm.

Speed: 10 to 500mm/sec, no load.

Fluid: filtered air without lubrication. If lubricated air is used, it is recommended to use oil ISOVG32. Once applied, the lubrication should never be interrupted.

250 and 320mm bore cylinders are available upon request.



G3/4", Ø160mm

0158	Stroke mm
40M2L160A0050	50
40M2L160A0080	80
40M2L160A0100	100
40M2L160A0150	150
40M2L160A0200	200
40M2L160A0250	250
40M2L160A0300	300
40M2L160A0400	400
40M2L160A0500	500
40M2L160A0600	600
40M2L160A0700	700
40M2L160A0800	800
40M2L160A0900	900
40M2L160A1000	1000
40M2L160A1250	1250
40M2L160A1500	1500
40M2L160A1750	1750
40M2L160A2000	2000

Tech Sheet 68271

G3/4", Ø200mm

0158	Stroke mm
40M2L200A0050	50
40M2L200A0080	80
40M2L200A0100	100
40M2L200A0150	150
40M2L200A0200	200
40M2L200A0250	250
40M2L200A0300	300
40M2L200A0400	400
40M2L200A0500	500
40M2L200A0600	600
40M2L200A0700	700
40M2L200A0800	800
40M2L200A0900	900
40M2L200A1000	1000
40M2L200A1250	1250
40M2L200A1500	1500
40M2L200A1750	1750
40M2L200A2000	2000

Tech Sheet 68271



For **In-line Flow Control Valves**
see page **636**



ISO & VDMA CYLINDER MOUNTINGS

Piston Rod Mountings



Piston Rod Swivel Ball Ends, Mod GA

0158	Bore mm	To Suit Unit
GA 8/10	8/10	24
GA 12/16	12/16	24
GA 20	20	24
GA 25/32	25/32	60,61,63
GA 40	40	60,61,63
GA 50/63	50/63	60,61,63
GA 80/100	80/100	60,61,63
GA 41 125	125	60,61,63
GA 160/200	160/200	40

Tech Sheet 1844



Piston Rod Fork Ends, Mod G

0158	Bore mm	To Suit Unit
G 12/16	12/16	24
G 20	20	24
G 25/32	25/32	24,60,61,63
G 40	40	60,61,63
G 50/63	50/63	60,61,63
G 80/100	80/100	60,61,63
G 41 125	125	60,61,63
G 160/200	160/200	40

Tech Sheet 1844



Self Aligning Rod, Mod GK

0158	Bore mm	To Suit Unit
GK 25 32	25/32	60,61,63
GK 40	40	60,61,63
GK 50 63	50/63	60,61,63
GK 80 100	80/100	60,61,63
GK 125	125	60,61,63
GK 160 200	160/200	40

Tech Sheet 1844



Piston Rod Socket Joint, Mod GY

0158	Bore mm	To Suit Unit
GY 32	32	60,61,63
GY 40	40	60,61,63
GY 50 63	50/63	60,61,63
GY 80 100	80/100	60,61,63

Tech Sheet 1844



Piston Rod Lock Nut, Mod U

0158	Bore mm	To Suit Unit
U 12/16	12/16	24
U 20	20	24
U 25/32	25/32	24,60,61,63
U 40	40	60,61,63
U 50/63	50/63	60,61,63
U 80/100	80/100	60,61,63
U 41 125	125	60,61,63
U 160/200	160/200	40

Tech Sheet 1844

Foot Mountings



Foot Mountings (Pair), Mod B

0158	Bore mm	To Suit Unit
B 12/16	12/16	24
B 20/25	20/25	24
B 41 32	32	60,61,63
B 41 40	40	60,61,63
B 41 50	50	60,61,63
B 41 63	63	60,61,63
B 41 80	80	60,61,63
B 41 100	100	60,61,63
B 41 125	125	60,61,63
B 41 160	160	40
B 41 200	200	40

Tech Sheet 1844

Flange Mountings



Front & Rear Flange Mounts, Mod E

0158	Bore mm	To Suit Unit
E 12/16	12/16	24
E 20/25	20/25	24

Tech Sheet 1844

Front & Rear Flange Mounts, Mod D & E

0158	Bore mm	To Suit Unit
D E 41 32	32	60,61,63
D E 41 40	40	60,61,63
D E 41 50	50	60,61,63
D E 41 63	63	60,61,63
D E 41 80	80	60,61,63
D E 41 100	100	60,61,63
D E 41 125	125	60,61,63
D E 41 160	160	40
D E 41 200	200	40

Tech Sheet 1844

Trunnion Mountings



Rear Male Trunnion Mounts, Mod L

0158	Bore mm	To Suit Unit
L 41 32	32	60,61,63
L 41 40	40	60,61,63
L 41 50	50	60,61,63
L 41 63	63	60,61,63
L 41 80	80	60,61,63
L 41 125	125	60,61,63
L 41 160	160	40
L 41 200	200	40

Tech Sheet 1844

Rear Female Trunnion Mounts, Mod C & C H



0158	Bore mm	To Suit Unit
C 41 32	32	60,61,63
C 41 40	40	60,61,63
C 41 50	50	60,61,63
C 41 63	63	60,61,63
C H 41 80	80	60,61,63
C H 41 100	100	60,61,63
C H 41 125	125	60,61,63
C H 41 160	160	40
C H 41 200	200	40

Tech Sheet 1844

ISO & VDMA CYLINDER MOUNTINGS

Trunnion Mountings

Rear Trunnion Ball Joint Mounts, Mod R



0158	Bore mm	To Suit Unit
R 41 32	32	60,61,63
R 41 40	40	60,61,63
R 41 50	50	60,61,63
R 41 63	63	60,61,63
R 41 80	80	60,61,63
R 41 100	100	60,61,63
R 41 125	125	60,61,63

Tech Sheet 1844

Rear Trunnion Mounts, Mod I



0158	Bore mm	To Suit Unit
I 12/16	12/16	24
I 20/25	20/25	24

Tech Sheet 1844

Rear 90° Male Trunnion Mounts, Mod ZC



0158	Bore mm	To Suit Unit
ZC 32	32	60,61,63
ZC 40	40	60,61,63
ZC 50	50	60,61,63
ZC 63	63	60,61,63
ZC 80	80	60,61,63
ZC 100	100	60,61,63
ZC 125	125	60,61,63

Tech Sheet 1844

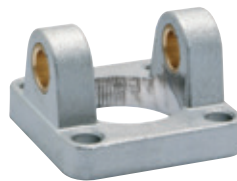
90° Swivel Combination Trunnion, Mod ZS



0158	Bore mm	To Suit Unit
ZS 160	160	40
ZS 200	200	40

Tech Sheet 1844

Front Female Trunnion Mounts, Mod H & CH



0158	Bore mm	To Suit Unit
H 41 32	32	60,61,63
H 41 40	40	60,61,63
H 41 50	50	60,61,63
H 60 63	63	60,61,63

Tech Sheet 1844

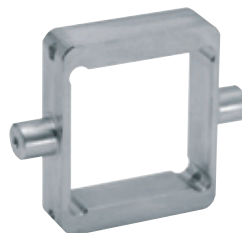
Centre Trunnion Mounts, Mod F



0158	Bore mm	To Suit Unit
F 32	32	60,61,63
F 40	40	60,61,63
F 50	50	60,61,63
F 63	63	60,61,63
F 80	80	60,61,63
F 100	100	60,61,63
F 125	125	60,61,63
F 160	160	40
F 200	200	40

Tech Sheet 1844

61 Series Centre Trunnion Mounts, Mod F



0158	Bore mm
F 61 32	32
F 61 40	40
F 61 50	50
F 61 80	80
F 61 100	100
F 61 125	125

Tech Sheet 1844

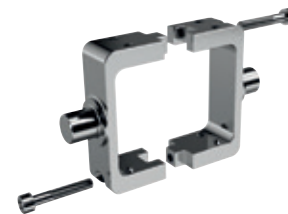
Centre Trunnion Counter Brackets, Mod BF



0158	Bore mm	To Suit Unit
BF 40 50	40/50	60,61,63
BF 63 80	63/80	60,61,63
BF 100 125	100/125	60,61,63
BF 160 200	160/200	40

Tech Sheet 1844

Centre Trunnion for 63 Series Profile Cylinders, Mod F



0158	Bore mm	To Suit Unit
F 63 32	32	63
F 63 40	40	63
F 63 50	50	63
F 63 63	63	63
F 63 80	80	63
F 63 100	100	63
F 63 125	125	63

Tech Sheet 1844

Clevis Pin, to suit C & CH Mountings



0158	Bore mm	To Suit Unit
S 32	32	60,61,63
S 40	40	60,61,63
S 50	50	60,61,63
S 63	63	60,61,63
S 80	80	60,61,63
S 100	100	60,61,63
S 125	125	60,61,63
S 160 200	160/200	40

Tech Sheet 1844

ISO 15552 CYLINDERS



Double Action Pneumatic Profile Cylinders ISO 15552

The P1F, in bore sizes Ø32 to 125mm, is a smooth profile linear pneumatic cylinder conforming to the ISO 15552 standard. It utilises internal composite technology (piston) to save weight, while assuring the high performance and functionality expected of an ISO cylinder. With aluminium sandblasted front and rear end covers, multi-layer PTFE-coated steel bearing with stainless steel piston rod, pneumatic cushioning and magnetic piston with polyurethane (PUR) seals as standard, this is our industrial profile ISO cylinder.

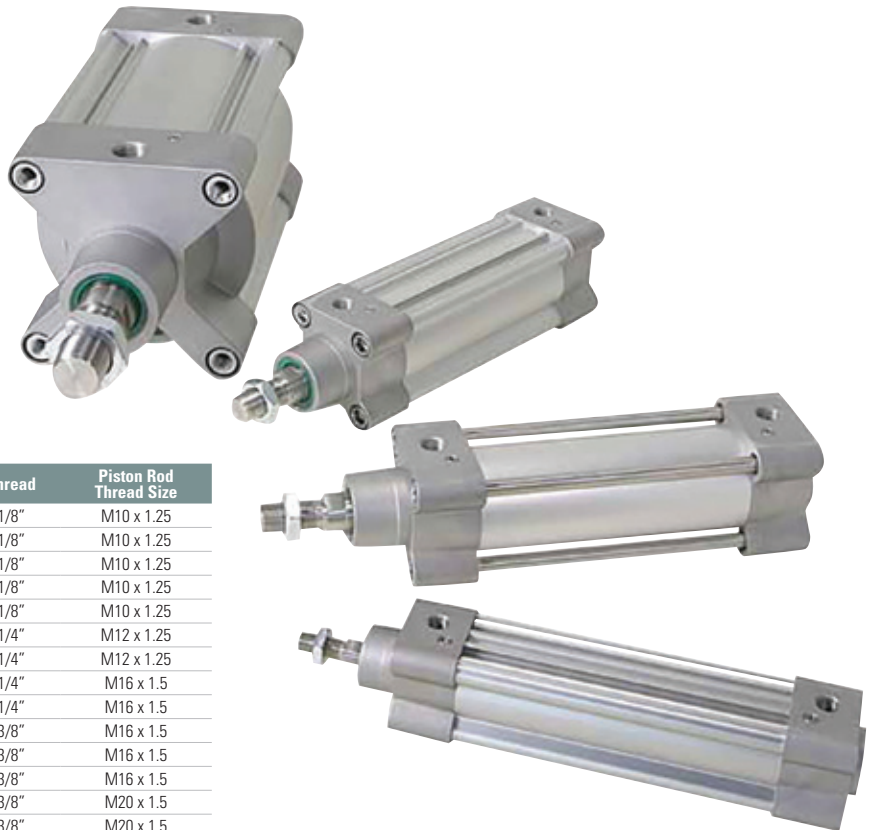
Challenges encountered within rigorous environments require leading engineered solutions and products. Meeting these exacting needs, the P1F provides the answer for high and low temperature applications. It is engineered to provide superior performance in harsh conditions, using proven class-leading seal technology for reliable operation, and long service life in temperatures down to -40°C and up to +150°C. With robust corrosion-resistant body and optional metal scraper, the P1F leads the way in today's changing climate.

Applications:

- Factory automation
- Machine tools
- Packaging machinery
- Vehicle assembly facilities
- Material handling
- Outdoor
- Transport

 **Working Temperature:**
-20 to +80 (Standard)

 **Maximum Working Pressure:**
10 bar



ISO 15552

0678	Bore mm	Stroke mm	Thread	Piston Rod Thread Size
P1F-S032MS-0050	32	50	1/8"	M10 x 1.25
P1F-S032MS-0080	32	80	1/8"	M10 x 1.25
P1F-S032MS-0100	32	100	1/8"	M10 x 1.25
P1F-S032MS-0125	32	125	1/8"	M10 x 1.25
P1F-S032MS-0160	32	160	1/8"	M10 x 1.25
P1F-S040MS-0050	40	50	1/4"	M12 x 1.25
P1F-S040MS-0125	40	125	1/4"	M12 x 1.25
P1F-S050MS-0080	50	80	1/4"	M16 x 1.5
P1F-S050MS-0100	50	100	1/4"	M16 x 1.5
P1F-S063MS-0100	63	100	3/8"	M16 x 1.5
P1F-S063MS-0200	63	200	3/8"	M16 x 1.5
P1F-S063MS-0500	63	500	3/8"	M16 x 1.5
P1F-S080MS-0100	80	100	3/8"	M20 x 1.5
P1F-S080MS-0200	80	200	3/8"	M20 x 1.5
P1F-S100MS-0025	100	25	1/2"	M20 x 1.5
P1F-S100MS-0200	100	200	1/2"	M20 x 1.5
P1F-S125MS-0250	125	250	1/2"	M27 x 2

Tech Sheet 68754



For Parker LF 3000 Push-in Fittings
see pages 793-799

ISO VDMA CYLINDER ACCESSORIES



Parker VDMA Cylinders



ISO6431 VDMA Flange MF1/MF2

0678	Cylinder Dia mm
P1C-4KMB	32



ISO6431/VDMA Foot Bracket MS1

0678	Cylinder Dia mm
P1C-4LMF	40



ISO6431/VDMA Clevis Bracket GA

0678	Cylinder Dia mm
P1C-4KMCA	32



ISO6431/VDMA Clevis Bracket MP2

0678	Cylinder Dia mm
P1C-4LMT	40
P1C-4NMT	63



ISO6431 VDMA Rear Pivot Bracket with Rigid Bearing

0678	Cylinder Dia mm
P1C-4KMD	32



ISO6431/VDMA Clevis Bracket MP4

0678	Cylinder Dia mm
P1C-4KME	32
P1C-4LME	40
P1C-4NME	63



Reed Sensors & Mountings

0678	Description
P8S-GSFLX	Reed Switch c/w 3m PVC Cable
9126344341	3m Cable with 8mm Round Connector
9126344342	10m Cable with 8mm Round Connector



Solid State PNP Sensor & Cable

0678	Description
P8S-GPMHX	PNP Sensor c/w 0.27m Lead
P8S-GPFLX	PNP 3 Metre Flying Lead.



ISO6431 VDMA Cylinder Repair Kits

0678	Bore mm
P1D-6KRN	32
P1D-6LRN	40
P1D-6MRN	50
P1D-6NRN	63
P1D-6PRN	80
P1D-6RRN	125



ISO Cylinder Repair Kits


0678	Bore mm
32-2110AR	32
40-2110AR	40

ISO 15552 CYLINDERS



Cylinders series 1319 ISO5552 VDMA Ecolight

 **Working Temperature:**
-5°C to +70°C
with standard seals

 **Maximum Pressure:**
10 bar



Ecolight Cylinders ISO 15552 VDMA 32mm-50mm

0110	Bore mm	Stroke mm	Port Size
1391.32.50.01	32	50	1/8"
1391.32.100.01	32	100	1/8"
1391.32.125.01	32	125	1/8"
1391.32.150.01	32	150	1/8"
1391.32.200.01	32	200	1/8"
1391.32.250.01	32	250	1/8"
1391.32.300.01	32	300	1/8"
1391.32.350.01	32	350	1/8"
1391.32.450.01	32	450	1/8"
1391.32.500.01	32	500	1/8"
1391.40.50.01	40	50	1/4"
1391.40.100.01	40	100	1/4"
1391.40.150.01	40	150	1/4"
1391.40.200.01	40	200	1/4"
1391.40.250.01	40	250	1/4"
1391.40.300.01	40	300	1/4"
1391.40.350.01	40	350	1/4"
1391.40.400.01	40	400	1/4"
1391.40.500.01	40	500	1/4"
1391.40.600.01	40	600	1/4"
1391.50.25.01	50	25	1/4"
1391.50.50.01	50	50	1/4"
1391.50.75.01	50	75	1/4"
1391.50.100.01	50	100	1/4"
1391.50.125.01	50	125	1/4"
1391.50.150.01	50	150	1/4"
1391.50.200.01	50	200	1/4"
1391.50.250.01	50	250	1/4"
1391.50.300.01	50	300	1/4"
1391.50.350.01	50	350	1/4"
1391.50.400.01	50	400	1/4"
1391.50.500.01	50	500	1/4"
1391.50.1000.01	50	1000	1/4"

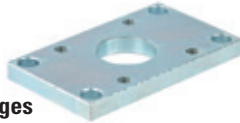
Ecolight Cylinders ISO 15552 VDMA 63mm-100mm

0110	Bore mm	Stroke mm	Port Size
1391.63.25.01	63	25	3/8"
1391.63.100.01	63	100	3/8"
1391.63.150.01	63	150	3/8"
1391.63.200.01	63	200	3/8"
1391.63.250.01	63	250	3/8"
1391.63.300.01	63	300	3/8"
1391.63.350.01	63	350	3/8"
1391.63.450.01	63	450	3/8"
1391.80.200.01	80	200	3/8"
1391.80.250.01	80	250	3/8"
1391.80.300.01	80	300	3/8"
1391.80.500.01	80	500	3/8"
1391.80.1000.01	80	1000	3/8"
1391.100.25.01	100	25	1/2"
1391.100.50.01	100	50	1/2"
1391.100.75.01	100	75	1/2"
1391.100.125.01	100	125	1/2"
1391.100.150.01	100	150	1/2"
1391.100.200.01	100	200	1/2"
1391.100.250.01	100	250	1/2"
1391.100.300.01	100	300	1/2"
1391.100.350.01	100	350	1/2"
1391.100.400.01	100	400	1/2"
1391.100.450.01	100	450	1/2"
1391.100.500.01	100	500	1/2"
1391.100.600.01	100	600	1/2"
1391.100.800.01	100	800	1/2"

Ecolight Cylinders ISO 15552 VDMA 125mm-200mm

0110	Bore mm	Stroke mm	Port Size
1391.125.300.01	125	300	1/2"
1391.160.700.01	160	700	3/4"

VDMA Cylinder Mountings



**Front & Rear Flanges
- Aluminium**

0110	Bore mm
1390.63.03F	63
1390.80.03F	80
1390.100.03F	100



Foot Brackets - Steel

0110	Bore mm
1320.40.05/1F	40



**Front Cylinder Clevis
- Aluminium**

0110	Bore mm
1380.50.08F	50
1380.63.08F	63
1380.100.08F	100



**Rear Clevis MP2
- Aluminium**

0110	Bore mm
1380.32.09F	32
1380.40.09F	40
1380.50.09F	50
1380.63.09F	63
1380.80.09F	80
1380.100.09F	100



**Rear Clevis MP4
- Aluminium**

0110	Bore mm
1380.40.09/1F	40
1380.50.09/1F	50
1380.63.09/1F	63
1380.100.09/1F	100



**Simple Rear Trunnion
complete with Support
(Not ISO) - Aluminium**

0110	Bore mm
1380.40.11F	40
1380.50.11F	50
1380.63.11F	63
1380.100.11F	100

**Square Angle Trunnion
- Aluminium**



0110	Bore mm
1380.32.35F	32
1380.63.35F	63
1380.80.35F	80
1380.100.35F	100

**Standard Trunnion
(not ISO) - Aluminium**



0110	Bore mm
1380.32.10F	32



**Rear Narrow Clevis
- Aluminium**

0110	Bore mm
1380.80.30F	80



**Rear Male Clevis
complete with
Jointed Head - Aluminium**

0110	Bore mm
1380.32.15F	32
1380.40.15F	40
1380.50.15F	50
1380.80.15F	80



**Rod Clevis complete
with Pin - Steel**

0110	Bore mm
1320.40.13F	40
1320.50.13F	50
1320.80.13F	80
1320.100.13F	100



**Rod Clevis complete
with Clip - Steel**

0110	Bore mm
1320.32.13/1F	32
1320.40.13/1F	40
1320.50.13/1F	50
1320.63.13/1F	63
1320.80.13/1F	80
1320.100.13/1F	100

Rod Lock Nuts



0110	Bore mm
1320.32.18F	32



Ball Joint

0110	Bore mm
1320.32.32F	32
1320.40.32F	40
1320.50.32F	50
1320.63.32F	63



Self Aligning Joint

0110	Bore mm
1320.32.33F	32
1320.40.33F	40



1580U Reed Switch complete with LED

0110	Description
1580U	LED Reed Switch N/O



**1500U Reed Switch
complete with LED**

0110	Description
1500.U	LED Reed Switch N/O



1500U Sensor Clamp

0110	Bore mm
1390.A	32 & 40