



techhose

QUALITY CONNECTIONS

Hydraulics

Pneumatics
& Vacuum

Industrial

Compressed Air
& Ring Main

Process &
Instrumentation

Malleable Iron

Handrail System

Using standard tube and pipeclamp fittings, imagination is your only limitation to what can be built. From industry to retail from safety to play all can use the pipeclamp system.

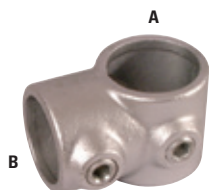
Manufactured to BS EN 1562 1997
Galvanised to BS EN 1461 1999

Applications:

- Safety railings
- Storage bays
- Handrails
- Support framework
- Racking
- Compounds
- Cycle racks
- Hanging rails
- Access and invalid ramps
- Door access and entry guarding

Pipeclamp Size	Tube OD mm	Tube OD inch	Nom Bore mm	Nom Bore inch
1	26.9	1.1/16	20	3/4"
2	33.7	1.11/32	25	1"
3	42.4	1.11/16	32	1.1/4"
4	48.3	1.29/32	40	1.1/2"
5	60.3	2.3/8	50	2"

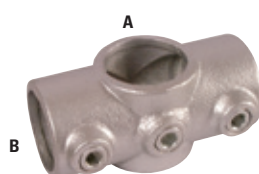
Short Tee (101)



1089	Pipeclamp Size A	Pipeclamp Size B
PCLAMPS-101-1	1	1
PCLAMPS-101-2	2	2
PCLAMPS-101-3	3	3
PCLAMPS-101-4	4	4
PCLAMPS-101-4/3	4	3
PCLAMPS-101-5	5	5
PCLAMPS-101-5/4	5	4

Tech Sheet 1

2 Socket Cross (119)



1089	Pipeclamp Size A	Pipeclamp Size B
PCLAMPS-119-1	1	1
PCLAMPS-119-2	2	2
PCLAMPS-119-3	3	3
PCLAMPS-119-4	4	4
PCLAMPS-119-5	5	5

Tech Sheet 1

90° 3 Way Elbow (128)



1089	Pipeclamp Size
PCLAMPS-128-1	1
PCLAMPS-128-2	2
PCLAMPS-128-3	3
PCLAMPS-128-4	4

Tech Sheet 1

Long Tee (104)



1089	Pipeclamp Size
PCLAMPS-104-1	1
PCLAMPS-104-2	2
PCLAMPS-104-3	3
PCLAMPS-104-4	4
PCLAMPS-104-5	5

Tech Sheet 1

90° 2 Way Elbow (125)



1089	Pipeclamp Size
PCLAMPS-125-1	1
PCLAMPS-125-2	2
PCLAMPS-125-3	3
PCLAMPS-125-4	4
PCLAMPS-125-5	5

Tech Sheet 1

Adjustable Tee (129)



1089	Pipeclamp Size
PCLAMPS-129-2	2
PCLAMPS-129-3	3
PCLAMPS-129-4	4

Tech Sheet 1

3 Way Through (116)



1089	Pipeclamp Size
PCLAMPS-116-1	1
PCLAMPS-116-2	2
PCLAMPS-116-3	3
PCLAMPS-116-4	4
PCLAMPS-116-5	5

Tech Sheet 1

90° 2 Way Swivel Elbow (125H)



1089	Pipeclamp Size
PCLAMPS-125H-3	3
PCLAMPS-125H-4	4

Adjustable Cross (130)



1089	Pipeclamp Size
PCLAMPS-130-2	2
PCLAMPS-130-3	3

Tech Sheet 1

PIPECLAMPS HANDRAIL SYSTEMS



Wall Plate (131)



1089	Pipeclamp Size
PCLAMPS-131-1	1
PCLAMPS-131-2	2
PCLAMPS-131-3	3
PCLAMPS-131-4	4
PCLAMPS-131-5	5

Tech Sheet 1

Base Plate (132)



1089	Pipeclamp Size
PCLAMPS-132-1	1
PCLAMPS-132-2	2
PCLAMPS-132-3	3
PCLAMPS-132-4	4
PCLAMPS-132-5	5

Tech Sheet 1

Plastic Plug (133)



1089	Pipeclamp Size
PCLAMPS-133-1	1
PCLAMPS-133-2	2
PCLAMPS-133-3	3
PCLAMPS-133-4	4
PCLAMPS-133-5	5

Tech Sheet 1

Ground Socket (134)



1089	Pipeclamp Size
PCLAMPS-134-2	2
PCLAMPS-134-3	3
PCLAMPS-134-4	4

Tech Sheet 1

Retro Fit Clamp (135)



1089	Pipeclamp Size
PCLAMPS-135-2	2
PCLAMPS-135-3	3
PCLAMPS-135-4	4

Tech Sheet 1

Gate Eye (138)



1089	Pipeclamp Size
PCLAMPS-138-1	1
PCLAMPS-138-2	2
PCLAMPS-138-3	3
PCLAMPS-138-4	4

Tech Sheet 1

Gate Hinge (140)



1089	Pipeclamp Size
PCLAMPS-140-1	1
PCLAMPS-140-2	2
PCLAMPS-140-3	3

Tech Sheet 1

Wall Mounted Handrail Bracket (143)



1089	Pipeclamp Size
PCLAMPS-143-1	1
PCLAMPS-143-2	2
PCLAMPS-143-3	3
PCLAMPS-143-4	4

Tech Sheet 1

Structural Offset Side Palm Fixing (144)



1089	Pipeclamp Size
PCLAMPS-144-2	2
PCLAMPS-144-3	3
PCLAMPS-144-4	4

Tech Sheet 1

Non Structural Offset Side Palm Fixing (145)



1089	Pipeclamp Size
PCLAMPS-145-2	2
PCLAMPS-145-3	3
PCLAMPS-145-4	4

Tech Sheet 1

Structural Flush Side Palm Fixing (146)



1089	Pipeclamp Size
PCLAMPS-146-2	2
PCLAMPS-146-3	3
PCLAMPS-146-4	4

Tech Sheet 1

Offset Swivel Tee (147)



1089	Pipeclamp Size
PCLAMPS-147-2	2
PCLAMPS-147-3	3
PCLAMPS-147-4	4

Tech Sheet 1

Short Swivel In-line Tee (148)



1089	Pipeclamp Size
PCLAMPS-148-1	1
PCLAMPS-148-2	2
PCLAMPS-148-3	3
PCLAMPS-148-4	4

Tech Sheet 1

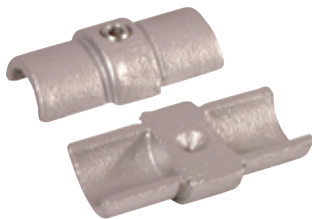
In-line External Tube Connector (149)



1089	Pipeclamp Size
PCLAMPS-149-1	1
PCLAMPS-149-2	2
PCLAMPS-149-3	3
PCLAMPS-149-4	4
PCLAMPS-149-5	5

Tech Sheet 1

In-line Internal Tube Connector (150)



1089	Pipeclamp Size
PCLAMPS-150-2	2
PCLAMPS-150-3	3
PCLAMPS-150-4	4

Tech Sheet 1

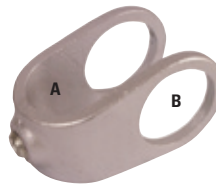
4 Way Cross (158)



1089	Pipeclamp Size
PCLAMPS-158-2	2
PCLAMPS-158-3	3
PCLAMPS-158-4	4

Tech Sheet 1

Retro Fit Clamp on Tee (160)



1089	Pipeclamp Size A	Pipeclamp Size B
PCLAMPS-160-2	2	2
PCLAMPS-160-3	3	3
PCLAMPS-160-4	4	4
PCLAMPS-160-5	5	5

Tech Sheet 1

Offset 90° Crossover (161)



1089	Pipeclamp Size A	Pipeclamp Size B
PCLAMPS-161-1	1	1
PCLAMPS-161-2	2	2
PCLAMPS-161-3	3	3
PCLAMPS-161-3/2	3	2
PCLAMPS-161-4	4	4
PCLAMPS-161-4/2	4	2

Tech Sheet 1

Combination Socket (165)

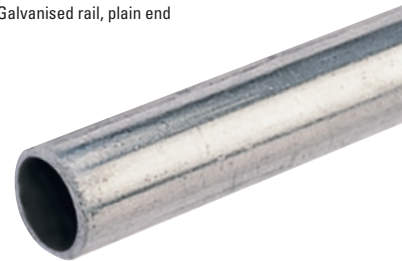


1089	Pipeclamp Size
PCLAMPS-165-1	1
PCLAMPS-165-3	3
PCLAMPS-165-5	5

Tech Sheet 1

Pipeclamp Rails

Galvanised rail, plain end



Pipeclamp Size	Tube OD mm	Tube OD inch	Nom Bore mm	Nom Bore inch
1	26.9	1.1/16	20	3/4"
2	33.7	1.11/32	25	1"
3	42.4	1.11/16	32	1.1/4"
4	48.3	1.29/32	40	1.1/2"
5	60.3	2.3/8	50	2"

6.4 Metre Lengths

1089	Pipeclamp Size
PCLAMP-TUBE1-6.5	1
PCLAMP-TUBE2-6.5	2
PCLAMP-TUBE3-6.5	3
PCLAMP-TUBE4-6.5	4
PCLAMP-TUBE5-6.5	5

Tech Sheet 1

3.2 Metre Lengths

1089	Pipeclamp Size
PCLAMP-TUBE1-3.25	1
PCLAMP-TUBE2-3.25	2
PCLAMP-TUBE3-3.25	3
PCLAMP-TUBE4-3.25	4
PCLAMP-TUBE5-3.25	5

Tech Sheet 1



6.4 metre lengths are available on 2-5 working day delivery service. Specified delivery dates and times cannot be guaranteed. Additional carriage charges may apply, based on weight and location. Please speak to our Business Development Team for full details.

THE SWIVEL RANGE

The swivel range is constructed using female and male parts. 173F is common to all combinations. Lugs on fittings sizes 1 to 5 have the same dimensions, and sizes can be mixed if required, ie: 173F-1 with 173M-4. In addition to being used with 173F to make the combination, all 'M' fittings can also be used to secure various types of infill in place.

WARNING: An entire structure should not be built just using swivel fittings.

Manufactured to BS EN 1562 1997
Galvanised to BS EN 1461 1999

Pipe-clamp Size	Tube OD mm	Tube OD inch	Nom Bore mm	Nom Bore inch
1	26.9	1.1/16	20	3/4"
2	33.7	1.11/32	25	1"
3	42.4	1.11/16	32	1.1/4"
4	48.3	1.29/32	40	1.1/2"
5	60.3	2.3/8	50	2"

Double In-line Swivel Combination (167)



1089	Pipeclamp Size
PCLAMPS-167-1	1
PCLAMPS-167-2	2
PCLAMPS-167-3	3
PCLAMPS-167-4	4
PCLAMPS-167-5	5

Tech Sheet 1

Double Male In-line Swivel (167M)



1089	Pipeclamp Size
PCLAMPS-167M-3	3
PCLAMPS-167M-4	4

90° Corner Swivel (168)



1089	Pipeclamp Size
PCLAMPS-168-2	2
PCLAMPS-168-3	3
PCLAMPS-168-4	4

Tech Sheet 1

90° Male Corner Swivel (168M)



1089	Pipeclamp Size
PCLAMPS-168M-4	2

Swivel Locating Flange (169)



1089	Pipeclamp Size
PCLAMPS-169-1	1
PCLAMPS-169-2	2
PCLAMPS-169-3	3
PCLAMPS-169-4	4

Tech Sheet 1

Male Swivel Locating Flange (169M)



1089	Pipeclamp Size
PCLAMPS-169M	

Tech Sheet 1

Single Sided Mesh Panel Clip (170)



1089	Pipeclamp Size
PCLAMPS-170-1	1
PCLAMPS-170-2	2
PCLAMPS-170-3	3
PCLAMPS-170-4	4
PCLAMPS-170-5	5

Tech Sheet 1

Double Sided Mesh Panel Clip (171)



1089	Pipeclamp Size
PCLAMPS-171-1	1
PCLAMPS-171-2	2
PCLAMPS-171-3	3
PCLAMPS-171-4	4
PCLAMPS-171-5	5

Tech Sheet 1

Single Swivel (173)



1089	Pipeclamp Size
PCLAMPS-173-2	2
PCLAMPS-173-3	3
PCLAMPS-173-4	4

Female Swivel (173F)



1089	Pipeclamp Size
PCLAMPS-173F-1	1
PCLAMPS-173F-2	2
PCLAMPS-173F-3	3
PCLAMPS-173F-5	5

Tech Sheet 1

Single Male Swivel (173M)



1089	Pipeclamp Size
PCLAMPS-173M-2	2
PCLAMPS-173M-3	3
PCLAMPS-173M-4	4
PCLAMPS-173M-5	5
Tech Sheet 1	

3 Way Outlet Tee (176)



1089	Pipeclamp Size
PCLAMPS-176-2	2
PCLAMPS-176-3	3
PCLAMPS-176-4	4
PCLAMPS-176-5	5
Tech Sheet 1	

Locking Collar (179)



1089	Pipeclamp Size
PCLAMPS-179-1	1
PCLAMPS-179-2	2
PCLAMPS-179-3	3
PCLAMPS-179-4	4
Tech Sheet 1	

Hook (182)



1089	Pipeclamp Size
PCLAMPS-182-2	2
PCLAMPS-182-3	3
PCLAMPS-182-4	4
Tech Sheet 1	

Cover (184)



1089	Pipeclamp Size
PCLAMPS-184-2	2
PCLAMPS-184-4	4

Saddle Clamp (198)



1089	Pipeclamp Size
PCLAMPS-198-2	2
PCLAMPS-198-3	3
PCLAMPS-198-4	4

Single Pipe Clamp (199)



1089	Pipeclamp Size
PCLAMPS-199-3	3
PCLAMPS-199-4	4

Slope Range Short Tee (201)



1089	Pipeclamp Size
PCLAMPS-201-2	2
PCLAMPS-201-4	4

Slope Range Long Tee (204)



1089	Pipeclamp Size
PCLAMPS-204-2	2
PCLAMPS-204-4	4

Slope Range Socket Cross (219)



1089	Pipeclamp Size
PCLAMPS-219-2	2
PCLAMPS-219-4	4

Variable Angle In-line Connector (224)



1089	Pipeclamp Size
PCLAMPS-224-2	2
PCLAMPS-224-3	3
PCLAMPS-224-4	4

Slope Range Elbow (225)



1089	Pipeclamp Size
PCLAMPS-225-2	2
PCLAMPS-225-4	4
Tech Sheet 1	

THE SWIVEL RANGE



Spare Grubscrews (GS)



1089	Pipeclamp Size
PCLAMPS-GS3-1-2	1-2
PCLAMPS-GS3-4-5	3-4-5
Tech Sheet 1	

Dual Ratchet (233)



1089	Pipeclamp Size
PCLAMPS-233	1-5
Tech Sheet 1	

Allen Keys (235)



1089	Pipeclamp Size	Hex Size
PCLAMPS-235-1-2	1-2	1/4"
PCLAMPS-2353-4-5	3-4-5	3/8"
Tech Sheet 1		

DISABILITY ACCESS



Elbow (DDA1)



1089	Pipeclamp Size
DDA1	3

Post Connector (DDA3)



1089	Pipeclamp Size
DDA3	3

Variable Elbow (DDA5)



1089	Pipeclamp Size
DDA5	3

End Plate (DDA2)



1089	Pipeclamp Size
DDA2	3

Post End Connector (DDA4)



1089	Pipeclamp Size
DDA4	3

Wall Plate (DDA6)



1089	Pipeclamp Size
DDA6	3