



techhose

QUALITY CONNECTIONS

Hydraulics

Pneumatics
& Vacuum

Industrial

Compressed Air
& Ring Main

Process &
Instrumentation

Malleable Iron

Barrel Nipples, Tube & Accessories

RIDGID

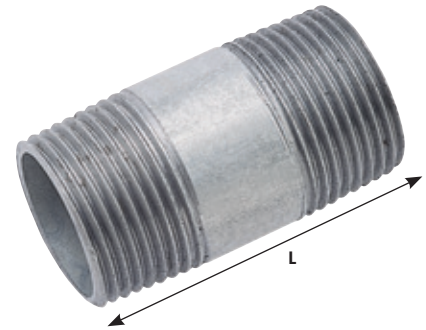


See pages 1742-1746

MALLEABLE IRON FITTINGS



Medium-duty Malleable Iron Barrel Nipples



Galvanised, BSPT

0305	Thread	Length mm
MIB-18X60	1/8"	60
MIB-18X80	1/8"	80
MIB-14X40	1/4"	40
MIB-14X60	1/4"	60
MIB-14X80	1/4"	80
MIB-14X100	1/4"	100
MIB-14X120	1/4"	120
MIB-14X150	1/4"	150
MIB-14X180	1/4"	180
MIB-14X200	1/4"	200
MIB-14X250	1/4"	250
MIB-14X300	1/4"	300
MIB-38X40	3/8"	40
MIB-38X50	3/8"	50
MIB-38X60	3/8"	60
MIB-38X80	3/8"	80
MIB-38X100	3/8"	100
MIB-38X120	3/8"	120
MIB-38X150	3/8"	150
MIB-38X180	3/8"	180
MIB-38X200	3/8"	200
MIB-38X250	3/8"	250
MIB-38X300	3/8"	300
MIB-12X30	1/2"	30
MIB-12X40	1/2"	40
MIB-12X50	1/2"	50
MIB-12X60	1/2"	60
MIB-12X80	1/2"	80
MIB-12X100	1/2"	100

0305	Thread	Length mm
MIB-12X120	1/2"	120
MIB-12X150	1/2"	150
MIB-12X180	1/2"	180
MIB-12X200	1/2"	200
MIB-12X250	1/2"	250
MIB-12X300	1/2"	300
MIB-34X30	3/4"	30
MIB-34X40	3/4"	40
MIB-34X60	3/4"	60
MIB-34X70	3/4"	70
MIB-34X80	3/4"	80
MIB-34X100	3/4"	100
MIB-34X120	3/4"	120
MIB-34X150	3/4"	150
MIB-34X180	3/4"	180
MIB-34X200	3/4"	200
MIB-34X250	3/4"	250
MIB-34X300	3/4"	300
MIB-34X1000	3/4"	1000
MIB-34X1500	3/4"	1500
MIB-1X30	1"	30
MIB-1X40	1"	40
MIB-1X50	1"	50
MIB-1X60	1"	60
MIB-1X70	1"	70
MIB-1X80	1"	80
MIB-1X100	1"	100
MIB-1X120	1"	120
MIB-1X150	1"	150

0305	Thread	Length mm
MIB-1X180	1"	180
MIB-1X200	1"	200
MIB-1X250	1"	250
MIB-1X300	1"	300
MIB-114X80	1.1/4"	80
MIB-114X100	1.1/4"	100
MIB-114X120	1.1/4"	120
MIB-114X125	1.1/4"	125
MIB-114X150	1.1/4"	150
MIB-114X180	1.1/4"	180
MIB-114X200	1.1/4"	200
MIB-114X250	1.1/4"	250
MIB-114X300	1.1/4"	300
MIB-112X80	1.1/2"	80
MIB-112X100	1.1/2"	100
MIB-112X120	1.1/2"	120
MIB-112X150	1.1/2"	150
MIB-112X180	1.1/2"	180
MIB-112X200	1.1/2"	200
MIB-112X250	1.1/2"	250
MIB-112X300	1.1/2"	300
MIB-2X80	2"	80
MIB-2X100	2"	100
MIB-2X120	2"	120
MIB-2X150	2"	150
MIB-2X180	2"	180
MIB-2X200	2"	200
MIB-2X250	2"	250
MIB-2X300	2"	300

You might also need...



PORTWEST

For Portwest PPE
see pages 1752-1760

Medium-duty Malleable Iron Barrel Nipples



Black, BSPT

Q305	Thread	Length mm
MIB-14X40N	1/4"	40
MIB-14X60N	1/4"	60
MIB-14X80N	1/4"	80
MIB-14X100N	1/4"	100
MIB-14X120N	1/4"	120
MIB-14X150N	1/4"	150
MIB-14X180N	1/4"	180
MIB-14X200N	1/4"	200
MIB-14X250N	1/4"	250
MIB-14X300N	1/4"	300
MIB-38X30N	3/8"	30
MIB-38X40N	3/8"	40
MIB-38X60N	3/8"	60
MIB-38X80N	3/8"	80
MIB-38X100N	3/8"	100
MIB-38X120N	3/8"	120
MIB-38X150N	3/8"	150
MIB-38X180N	3/8"	180
MIB-38X200N	3/8"	200
MIB-38X250N	3/8"	250
MIB-38X300N	3/8"	300
MIB-12X30N	1/2"	30
MIB-12X40N	1/2"	40
MIB-12X60N	1/2"	60
MIB-12X80N	1/2"	80
MIB-12X100N	1/2"	100
MIB-12X120N	1/2"	120
MIB-12X150N	1/2"	150
MIB-12X180N	1/2"	180
MIB-12X200N	1/2"	200
MIB-12X250N	1/2"	250
MIB-12X300N	1/2"	300
MIB-34X40N	3/4"	40

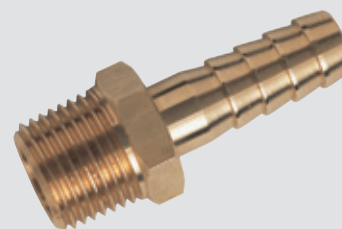
Q305	Thread	Length mm
MIB-34X60N	3/4"	60
MIB-34X80N	3/4"	80
MIB-34X100N	3/4"	100
MIB-34X120N	3/4"	120
MIB-34X150N	3/4"	150
MIB-34X180N	3/4"	180
MIB-34X200N	3/4"	200
MIB-34X250N	3/4"	250
MIB-34X300N	3/4"	300
MIB-1X40N	1"	40
MIB-1X60N	1"	60
MIB-1X80N	1"	80
MIB-1X100N	1"	100
MIB-1X120N	1"	120
MIB-1X150N	1"	150
MIB-1X180N	1"	180
MIB-1X200N	1"	200
MIB-1X250N	1"	250
MIB-1X300N	1"	300
MIB-114X60N	1.1/4"	60
MIB-114X80N	1.1/4"	80
MIB-114X100N	1.1/4"	100
MIB-114X120N	1.1/4"	120
MIB-114X150N	1.1/4"	150
MIB-114X180N	1.1/4"	180
MIB-114X200N	1.1/4"	200
MIB-114X250N	1.1/4"	250
MIB-114X300N	1.1/4"	300
MIB-112X60N	1.1/2"	60
MIB-112X80N	1.1/2"	80
MIB-112X100N	1.1/2"	100
MIB-112X120N	1.1/2"	120
MIB-112X150N	1.1/2"	150

Q305	Thread	Length mm
MIB-112X180N	1.1/2"	180
MIB-112X200N	1.1/2"	200
MIB-112X250N	1.1/2"	250
MIB-112X300N	1.1/2"	300
MIB-2X80N	2"	80
MIB-2X100N	2"	100
MIB-2X120N	2"	120
MIB-2X150N	2"	150
MIB-2X180N	2"	180
MIB-2X200N	2"	200
MIB-2X250N	2"	250
MIB-2X300N	2"	300
MIB-212X100N	2.1/2"	100
MIB-212X120N	2.1/2"	120
MIB-212X150N	2.1/2"	150
MIB-212X180N	2.1/2"	180
MIB-212X200N	2.1/2"	200
MIB-212X250N	2.1/2"	250
MIB-212X300N	2.1/2"	300
MIB-3X100N	3"	100
MIB-3X120N	3"	120
MIB-3X150N	3"	150
MIB-3X180N	3"	180
MIB-3X200N	3"	200
MIB-3X250N	3"	250
MIB-3X300N	3"	300
MIB-4X100N	4"	100
MIB-4X120N	4"	120
MIB-4X150N	4"	150
MIB-4X180N	4"	180
MIB-4X200N	4"	200
MIB-4X250N	4"	250
MIB-4X300N	4"	300

Customers who bought from this page also purchased...



Brass Hose Tails see page 1141



Heavy-duty Malleable Iron Nipples



Galvanised, BSPT

0305	Thread	Length mm
HBN18-40	1/8"	40
HBN18-60	1/8"	60
HBN18-80	1/8"	80
HBN18-100	1/8"	100
HBN14-40	1/4"	40
HBN14-60	1/4"	60
HBN14-80	1/4"	80
HBN14-100	1/4"	100
HBN14-120	1/4"	120
HBN14-150	1/4"	150
HBN14-180	1/4"	180
HBN14-200	1/4"	200
HBN14-250	1/4"	250
HBN14-300	1/4"	300
HBN38-40	3/8"	40
HBN38-50	3/8"	50
HBN38-60	3/8"	60
HBN38-70	3/8"	70
HBN38-80	3/8"	80
HBN38-100	3/8"	100
HBN38-120	3/8"	120
HBN38-150	3/8"	150
HBN38-180	3/8"	180
HBN38-200	3/8"	200
HBN12-30	1/2"	30
HBN12-40	1/2"	40
HBN12-50	1/2"	50
HBN12-60	1/2"	60
HBN12-80	1/2"	80
HBN12-100	1/2"	100
HBN12-120	1/2"	120
HBN12-150	1/2"	150
HBN12-180	1/2"	180
HBN12-200	1/2"	200
HBN12-250	1/2"	250
HBN12-300	1/2"	300
HBN34-40	3/4"	40
HBN34-60	3/4"	60
HBN34-70	3/4"	70
HBN34-80	3/4"	80
HBN34-100	3/4"	100
HBN34-120	3/4"	120
HBN34-150	3/4"	150

0305	Thread	Length mm
HBN34-180	3/4"	180
HBN34-200	3/4"	200
HBN34-250	3/4"	250
HBN34-300	3/4"	300
HBN1-50	1"	50
HBN1-60	1"	60
HBN1-70	1"	70
HBN1-80	1"	80
HBN1-100	1"	100
HBN1-120	1"	120
HBN1-150	1"	150
HBN1-180	1"	180
HBN1-200	1"	200
HBN1-300	1"	300
HBN114-80	1.1/4"	80
HBN114-100	1.1/4"	100
HBN114-120	1.1/4"	120
HBN114-150	1.1/4"	150
HBN114-200	1.1/4"	200
HBN114-250	1.1/4"	250
HBN114-300	1.1/4"	300
HBN112-80	1.1/2"	80
HBN112-100	1.1/2"	100
HBN112-120	1.1/2"	120
HBN112-150	1.1/2"	150
HBN112-180	1.1/2"	180
HBN112-200	1.1/2"	200
HBN112-300	1.1/2"	300
HBN2-80	2"	80
HBN2-120	2"	120
HBN2-150	2"	150
HBN2-180	2"	180
HBN2-250	2"	250
HBN2-300	2"	300
HBN212-100	2.1/2"	100
HBN212-200	2.1/2"	200
HBN212-300	2.1/2"	300
HBN3-100	3"	100
HBN3-200	3"	200
HBN3-300	3"	300
HBN4-100	4"	100
HBN4-200	4"	200
HBN4-300	4"	300



For Jointing Paste
see page 1391

MALLEABLE IRON FITTINGS



K-LINE CONNECT

Barrel Nipples to BS EN 10241

Material: BS EN 10241
 Dimensions: BS EN 10241
 Threads: ISO 7/1
 Schedule: Medium/Heavy-duty



Galvanised, BSPT

0357	Thread	Length mm
ENBN-18X40	1/8"	40
ENBN-18X60	1/8"	60
ENBN-14X40	1/4"	40
ENBN-14X60	1/4"	60
ENBN-14X80	1/4"	80
ENBN-14X100	1/4"	100
ENBN-14X200	1/4"	200
ENBN-14X250	1/4"	250
ENBN-38X40	3/8"	40
ENBN-38X50	3/8"	50
ENBN-38X60	3/8"	60
ENBN-38X80	3/8"	80
ENBN-38X100	3/8"	100
ENBN-38X150	3/8"	150
ENBN-38X200	3/8"	200
ENBN-12X30	1/2"	30
ENBN-12X40	1/2"	40
ENBN-12X50	1/2"	50
ENBN-12X60	1/2"	60
ENBN-12X80	1/2"	80
ENBN-12X100	1/2"	100
ENBN-12X150	1/2"	150
ENBN-12X200	1/2"	200
ENBN-12X250	1/2"	250
ENBN-12X300	1/2"	300
ENBN-34X40	3/4"	40
ENBN-34X60	3/4"	60
ENBN-34X80	3/4"	80
ENBN-34X100	3/4"	100
ENBN-34X150	3/4"	150
ENBN-34X200	3/4"	200
ENBN-34X300	3/4"	300
ENBN-1X40	1"	40
ENBN-1X50	1"	50

0357	Thread	Length mm
ENBN-1X60	1"	60
ENBN-1X80	1"	80
ENBN-1X100	1"	100
ENBN-1X150	1"	150
ENBN-1X200	1"	200
ENBN-1X300	1"	300
ENBN-114X80	1.1/4"	80
ENBN-114X100	1.1/4"	100
ENBN-114X150	1.1/4"	150
ENBN-114X200	1.1/4"	200
ENBN-114X300	1.1/4"	300
ENBN-112X80	1.1/2"	80
ENBN-112X100	1.1/2"	100
ENBN-112X150	1.1/2"	150
ENBN-112X200	1.1/2"	200
ENBN-112X300	1.1/2"	300
ENBN-2X80	2"	80
ENBN-2X100	2"	100
ENBN-2X150	2"	150
ENBN-2X200	2"	200
ENBN-2X300	2"	300
ENBN-212X100	2.1/2"	100
ENBN-212X150	2.1/2"	150
ENBN-212X200	2.1/2"	200
ENBN-212X300	2.1/2"	300
ENBN-3X100	3"	100
ENBN-3X150	3"	150
ENBN-3X200	3"	200
ENBN-3X300	3"	300
ENBN-4X100	4"	100
ENBN-4X150	4"	150
ENBN-4X200	4"	200
ENBN-4X300	4"	300

Page Tech Sheet 20569

Carbon Steel Pipe Nipple Medium/Heavy, Welded/Seamless																		
Pipe Size	Pipe O.D.	Length Close	Pipe Nipple Lengths (mm)															
			mm	mm	mm	mm	mm	mm	mm	mm	mm	mm	mm	mm	mm	mm	mm	
6	10.3	19	30	40	50	60	80	100	150	180	200	250	300	350	400	450	500	500
8	13.7	27	30	40	50	60	80	100	150	180	200	250	300	350	400	450	500	500
10	17.1	28	30	40	50	60	80	100	150	180	200	250	300	350	400	450	500	500
15	21.3	37	X	40	50	60	80	100	150	180	200	250	300	350	400	450	500	500
20	26.7	39	X	40	50	60	80	100	150	180	200	250	300	350	400	450	500	500
25	33.4	46	X	X	50	60	80	100	150	180	200	250	300	350	400	450	500	500
32	42.2	51	X	X	50	60	80	100	150	180	200	250	300	350	400	450	500	500
40	48.3	51	X	X	50	60	80	100	150	180	200	250	300	350	400	450	500	500
50	60.3	60	X	X	X	60	80	100	150	180	200	250	300	350	400	450	500	500
65	76.1	69	X	X	X	X	80	100	150	180	200	250	300	350	400	450	500	500
80	88.9	75	X	X	X	X	80	100	150	180	200	250	300	350	400	450	500	500
100	114.3	87	X	X	X	X	X	100	150	180	200	250	300	350	400	450	500	500
125	141.3	96	X	X	X	X	X	X	150	180	200	250	300	350	400	450	500	500
150	168.3	96	X	X	X	X	X	X	150	180	200	250	300	350	400	450	500	500

MALLEABLE IRON FITTINGS

Barrel Nipples to BS EN 10241

Material: BS EN 10241
Dimensions: BS EN 10241
Threads: ISO 7/1
Schedule: Medium/Heavy-duty



Black, BSPT

0357	Thread	Length mm
ENBN-18X40N	1/8"	40
ENBN-18X60N	1/8"	60
ENBN-14X40N	1/4"	40
ENBN-14X60N	1/4"	60
ENBN-14X80N	1/4"	80
ENBN-14X100N	1/4"	100
ENBN-14X200N	1/4"	200
ENBN-14X250N	1/4"	250
ENBN-38X40N	3/8"	40
ENBN-38X50N	3/8"	50
ENBN-38X60N	3/8"	60
ENBN-38X80N	3/8"	80
ENBN-38X100N	3/8"	100
ENBN-38X150N	3/8"	150
ENBN-38X200N	3/8"	200
ENBN-12X30N	1/2"	30
ENBN-12X40N	1/2"	40
ENBN-12X50N	1/2"	50
ENBN-12X60N	1/2"	60
ENBN-12X80N	1/2"	80
ENBN-12X100N	1/2"	100
ENBN-12X150N	1/2"	150
ENBN-12X200N	1/2"	200
ENBN-12X250N	1/2"	250
ENBN-12X300N	1/2"	300
ENBN-34X40N	3/4"	40
ENBN-34X60N	3/4"	60
ENBN-34X80N	3/4"	80
ENBN-34X100N	3/4"	100
ENBN-34X150N	3/4"	150
ENBN-34X200N	3/4"	200
ENBN-34X300N	3/4"	300
ENBN-1X40N	1"	40
ENBN-1X50N	1"	50

0357	Thread	Length mm
ENBN-1X60N	1"	60
ENBN-1X80N	1"	80
ENBN-1X100N	1"	100
ENBN-1X150N	1"	150
ENBN-1X200N	1"	200
ENBN-1X300N	1"	300
ENBN-114X80N	1.1/4"	80
ENBN-114X100N	1.1/4"	100
ENBN-114X150N	1.1/4"	150
ENBN-114X200N	1.1/4"	200
ENBN-114X300N	1.1/4"	300
ENBN-112X80N	1.1/2"	80
ENBN-112X100N	1.1/2"	100
ENBN-112X150N	1.1/2"	150
ENBN-112X200N	1.1/2"	200
ENBN-112X300N	1.1/2"	300
ENBN-2X80N	2"	80
ENBN-2X100N	2"	100
ENBN-2X150N	2"	150
ENBN-2X200N	2"	200
ENBN-2X300N	2"	300
ENBN-212X100N	2.1/2"	100
ENBN-212X150N	2.1/2"	150
ENBN-212X200N	2.1/2"	200
ENBN-212X300N	2.1/2"	300
ENBN-3X100N	3"	100
ENBN-3X150N	3"	150
ENBN-3X200N	3"	200
ENBN-3X300N	3"	300
ENBN-4X100N	4"	100
ENBN-4X150N	4"	150
ENBN-4X200N	4"	200
ENBN-4X300N	4"	300

Page Tech Sheet 20569

Carbon Steel Pipe Nipple Medium/Heavy, Welded/Seamless

Pipe Size mm	Pipe O.D. mm	Length Close mm	Pipe Nipple Lengths (mm)															
			30	40	50	60	80	100	150	180	200	250	300	350	400	450	500	
6	10.3	19	X	X	X	X	X	X	X	X	X	X	X	X	X	X	X	
8	13.7	27	X	X	X	X	X	X	X	X	X	X	X	X	X	X	X	
10	17.1	28	X	X	X	X	X	X	X	X	X	X	X	X	X	X	X	
15	21.3	37	X	X	X	X	X	X	X	X	X	X	X	X	X	X	X	
20	26.7	39	X	X	X	X	X	X	X	X	X	X	X	X	X	X	X	
25	33.4	46	X	X	X	X	X	X	X	X	X	X	X	X	X	X	X	
32	42.2	51	X	X	X	X	X	X	X	X	X	X	X	X	X	X	X	
40	48.3	51	X	X	X	X	X	X	X	X	X	X	X	X	X	X	X	
50	60.3	60	X	X	X	X	X	X	X	X	X	X	X	X	X	X	X	
65	76.1	69	X	X	X	X	X	X	X	X	X	X	X	X	X	X	X	
80	88.9	75	X	X	X	X	X	X	X	X	X	X	X	X	X	X	X	
100	114.3	87	X	X	X	X	X	X	X	X	X	X	X	X	X	X	X	
125	141.3	96	X	X	X	X	X	X	X	X	X	X	X	X	X	X	X	
150	168.3	96	X	X	X	X	X	X	X	X	X	X	X	X	X	X	X	

Screwed & Socketed Steel Tubing



EN10255, EN10217-1 & BS1387 - Medium Grade, Red Oxide Primed, 3.2m Lengths,

0193	Thread
NC-TUBE12N	1/2" (15mm)
NC-TUBE34N	3/4" (20mm)
NC-TUBE1N	1" (25mm)
NC-TUBE114N	1.1/4" (32mm)
NC-TUBE112N	1.1/2" (40mm)
NC-TUBE2N	2" (50mm)
NC-TUBE212N	2.1/2" (65mm)
NC-TUBE3N	3" (80mm)
NC-TUBE4N	4" (100mm)

Tech Sheet 10639

6.4m Lengths, BSPP

0193	Thread
NC-TUBE12N-6.5	1/2" (15mm)
NC-TUBE34N-6.5	3/4" (20mm)
NC-TUBE1N-6.5	1" (25mm)
NC-TUBE114N-6.5	1.1/4" (32mm)
NC-TUBE112N-6.5	1.1/2" (40mm)
NC-TUBE2N-6.5	2" (50mm)
NC-TUBE212N-6.5	2.1/2" (65mm)
NC-TUBE3N-6.5	3" (80mm)
NC-TUBE4N-6.5	4" (100mm)

Tech Sheet 10639

EN10255, EN10217-1 & BS1387 - Heavy Grade, Red Oxide Primed, 3.2m Lengths, BSPP

0193	Thread
NC-HTUBE12N	1/2" (15mm)
NC-HTUBE34N	3/4" (20mm)
NC-HTUBE1N	1" (25mm)
NC-HTUBE114N	1.1/4" (32mm)
NC-HTUBE2N	2" (50mm)

Tech Sheet 10639

6.4m Lengths, BSPP

0193	Thread
NC-HTUBE12N-6.5	1/2" (15mm)
NC-HTUBE34N-6.5	3/4" (20mm)
NC-HTUBE1N-6.5	1" (25mm)
NC-HTUBE114N-6.5	1.1/4" (32mm)
NC-HTUBE112N-6.5	1.1/2" (40mm)
NC-HTUBE2N-6.5	2" (50mm)

Tech Sheet 10639



EN10255, EN10217-1 & BS1387 - Medium Grade, Galvanised, 3.2m Lengths, BSPP

0193	Thread
NC-TUBE12	1/2" (15mm)
NC-TUBE34	3/4" (20mm)
NC-TUBE1	1" (25mm)
NC-TUBE114	1.1/4" (32mm)
NC-TUBE112	1.1/2" (40mm)
NC-TUBE2	2" (50mm)
NC-TUBE212	2.1/2" (65mm)
NC-TUBE3	3" (80mm)
NC-TUBE4	4" (100mm)

Tech Sheet 10639

6.4m Lengths, BSPP

0193	Thread
NC-TUBE12-6.5	1/2" (15mm)
NC-TUBE34-6.5	3/4" (20mm)
NC-TUBE1-6.5	1" (25mm)
NC-TUBE114-6.5	1.1/4" (32mm)
NC-TUBE112-6.5	1.1/2" (40mm)
NC-TUBE2-6.5	2" (50mm)
NC-TUBE212-6.5	2.1/2" (65mm)
NC-TUBE3-6.5	3" (80mm)
NC-TUBE4-6.5	4" (100mm)

Tech Sheet 10639

EN10255, EN10217-1 & BS1387 - Heavy Grade, Galvanised, 3.2m Lengths, BSPP

0193	Thread
NC-HTUBE12	1/2" (15mm)
NC-HTUBE34	3/4" (20mm)
NC-HTUBE1	1" (25mm)
NC-HTUBE114	1.1/4" (32mm)
NC-HTUBE112	1.1/2" (40mm)
NC-HTUBE2	2" (50mm)

Tech Sheet 10639

6.4m Lengths, BSPP

0193	Thread
NC-HTUBE12-6.5	1/2" (15mm)
NC-HTUBE34-6.5	3/4" (20mm)
NC-HTUBE1-6.5	1" (25mm)
NC-HTUBE114-6.5	1.1/4" (32mm)
NC-HTUBE112-6.5	1.1/2" (40mm)
NC-HTUBE2-6.5	2" (50mm)

Tech Sheet 10639

Dual Certified Tubes EN10255 and 10217-1

Universal Steel Mill based in UAE is a major producer of steel tubes across the world. As a major supplier to the world market Universal strives to ensure the products it produces meet the stringent standards of today's markets. To that end they have produced a dual certified tube that can be supplied into the HVAC, Mechanical and Fire Protection industries within the UK.

Certification - all tubes can be supplied with MTC (mill test certificates), certifying that the tubes comply to the relevant standard.

Tubes are available from an extensive stock range:

Standard full lengths or half randoms
Threaded and plain ended
Medium or heavy weight
Red and galvanised finishes

Technical Specification

Leak Tightness Test

- Online NDT machines
- Hydro static pressure testing to 50 bar

Chemical Testing

- Complete chemical laboratory at the mill
- Elco meters
- Hydrometers

Galvanising

- Hot dipped galvanising/zinc coating to EN10240 quality A.1
- Quality checked hourly with Elco meters to ensure a 55-70 micron thickness across tube length

Material

- Fully killed steel
- Tensile tested
- Internal weld seam shall not have a height exceeding 60% of the wall thickness



6.4 metre lengths are available on 2-5 working day delivery service. Specified delivery dates and times cannot be guaranteed. Additional carriage charges may apply, based on weight and location. Please speak to our Business Development Team for full details.

FLANGE BOLT KITS



Bright Zinc Plated Bolt Kits

4 x Bolts
4 x Nuts
4 x Washers
Steel Zinc Plated



M10 Thread

1096	Thread	Length mm
2034-8942	M10	40
2034-8959	M10	45

M12 Thread

1096	Thread	Length mm
2034-9007	M12	25
2034-9015	M12	30
2034-9098	M12	70
2034-9122	M12	90

M16 Thread

1096	Thread	Length mm
2034-9148	M16	50
2034-9155	M16	55
2034-9163	M16	60
2034-9171	M16	65
2034-9189	M16	70
2034-9197	M16	75
2034-9205	M16	80
2034-9221	M16	100
2034-9239	M16	110

M20 Thread

1096	Thread	Length mm
2034-9254	M20	55
2034-9262	M20	60
2034-9270	M20	65
2034-9288	M20	70
2034-9296	M20	75
2034-9312	M20	80
2034-9320	M20	90
2034-9361	M20	120

MALLEABLE IRON ACCESSORIES



School Board Pipe Brackets



Black

1092	Nominal Bore OD
MISB14N	1/4"
MISB38N	3/8"
MISB12N	1/2"
MISB34N	3/4"
MISB1N	1"
BSB20	1.1/4"
MISB112N	1.1/2"
MISB2N	2"
BSB48	3"
BSB64	4"



Galvanized

1092	Nominal Bore OD
MISB14	1/4"
MISB38	3/8"
MISB12	1/2"
MISB34	3/4"
MISB1	1"
MISB114	1.1/4"
MISB112	1.1/2"
MISB2	2"
MISB212	2.1/2"
MISB4	4"

Girder Clamp



Metric Thread

1092	Thread
MIGCM8	M8
MIGCM10	M10
MIGCM12	M12

Single M10 Tapping Pipe Ring



Black

1092	Nominal Bore OD
MISTP14N	1/4"
MISTP38N	3/8"
MISTP12N	1/2"
MISTP34N	3/4"
MISTP1N	1"
MISTP114N	1.1/4"
MISTP2N	2"

Tech Sheet 10641

Galvanised

1092	Nominal Bore OD
MISTP38	3/8"
MISTP12	1/2"
MISTP34	3/4"
MISTP1	1"
MISTP114	1.1/4"
MISTP112	1.1/2"
MISTP2	2"

Tech Sheet 10641

Double M10 Tapping Pipe Ring



Black

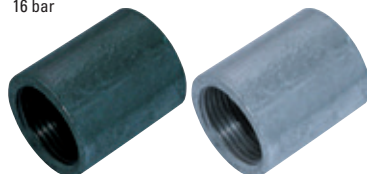
1092	Nominal Bore OD	Nominal Bore mm
MIDTP14N	1/4"	8
MIDTP38N	3/8"	18
MIDTP12N	1/2"	15
MIDTP1N	1"	25
MIDTP114N	1.1/4"	32

Galvanised

1092	Nominal Bore OD	Nominal Bore mm
MIDTP14	1/4"	8
MIDTP12	1/2"	15
MIDTP34	3/4"	20
MIDTP1	1"	25
MIDTP114	1.1/4"	32
MIDTP112	1.1/2"	51
MIDTP2	2"	50

Wrought Iron Sockets

Maximum Working Pressure: 16 bar



Black, BSPP

1099	Thread
MIWRSB-18N	1/8"
MIWRSB-14N	1/4"
MIWRSB-38N	3/8"
MIWRSB-12N	1/2"
MIWRSB-34N	3/4"
MIWRSB-1N	1"
MIWRSB-114N	1.1/4"
MIWRSB-112N	1.1/2"
MIWRSB-2N	2"
MIWRSB-212N	2.1/2"
MIWRSB-3N	3"
MIWRSB-4N	4"
MIWRSB-6N	6"

Galvanised, BSPP

1099	Thread
MIWRSG-18	1/8"
MIWRSG-14	1/4"
MIWRSG-38	3/8"
MIWRSG-12	1/2"
MIWRSG-34	3/4"
MIWRSG-1	1"
MIWRSG-114	1.1/4"
MIWRSG-112	1.1/2"
MIWRSG-2	2"
MIWRSG-212	2.1/2"
MIWRSG-3	3"
MIWRSG-4	4"

M10 Tapping Back Plate



Black

1092	Thread
MIBPM10N	M10
MIBPM12N	M12

Galvanised

1092	Thread
MIBPM10	M10
MIBPM12	M12

Studding



1092	Thread	Length Metres
MISDM8	M8 x 1.25	1
MISDM10	M10 x 1.5	1
MISDM10X1.0/3M	M10 x 1	3
MISDM12X1.0	M12 x 1	1

Repair Coupling

Working Temperature: -10°C to +60°C

Maximum Working Pressure: 10 bar



BSPP

1092	Thread	Length mm
MIRC-12	1/2"	76
MIRC-34	3/4"	76
MIRC-1	1"	88
MIRC-112	1.1/2"	102
MIRC-2	2"	102

Supports



Cantilever Arms

1092	Length mm
CA150HDG	150
CA300HDG	300
CA450HDG	450
CA600HDG	600
CA750HDG	750

FORGED STEEL FLANGES



Weld Neck



PN16/111, BS4504: 1989, Table 16

1098	ID
FSFWB-1	1"
FSFWB-114	1.1/4"
FSFWB-112	1.1/2"
FSFWB-2	2"
FSFWB-212	2.1/2"
FSFWB-3	3"
FSFWB-4	4"
Tech Sheet 1500	

PN40/111, BS4505: 1989, Table 40

1098	ID
FSFWB-1-300	1"
FSFWB-112-300	1.1/2"
FSFWB-2-300	2"
FSFWB-212-300	2.1/2"
FSFWB-4-300	4"
Tech Sheet 1500	

150lb, ANSI B16.5a/1992, ASA 150

1098	ID
FSFWA-1	1"
FSFWA-114	1.1/4"
FSFWA-112	1.1/2"
FSFWA-2	2"
FSFWA-212	2.1/2"
FSFWA-3	3"
FSFWA-4	4"
Tech Sheet 1500	

300lb, ANSI B16.5a/1992, ASA 300

1098	ID
FSFWA-212-300	2.1/2"
FSFWA-3-300	3"
FSFWA-4-300	4"
Tech Sheet 1500	

Slip-on



PN16/112, BS4504: 1989, Table 16

1098	ID
FSFSOB-12	1/2"
FSFSOB-34	3/4"
FSFSOB-1	1"
FSFSOB-114	1.1/4"
FSFSOB-112	1.1/2"
FSFSOB-2	2"
FSFSOB-212	2.1/2"
FSFSOB-3	3"
FSFSOB-4	4"
Tech Sheet 1500	

PN40/112, BS4504: 1989, Table 40

1098	ID
FSFSOB-12-300	1/2"
FSFSOB-112-300	1.1/2"
FSFSOB-2-300	2"
FSFSOB-212-300	2.1/2"
FSFSOB-3-300	3"
FSFSOB-4-300	4"
Tech Sheet 1500	

150lb, ANSI B16.5a/1992, ASA 150

1098	ID
FSFSOA-12	1/2"
FSFSOA-34	3/4"
FSFSOA-1	1"
FSFSOA-112	1.1/2"
FSFSOA-2	2"
FSFSOA-3	3"
FSFSOA-4	4"
Tech Sheet 1500	

300lb, ANSI B16.5a/1992, ASA 300

1098	ID
FSFSOA-34-300	3/4"
FSFSOA-114-300	1.1/4"
FSFSOA-2-300	2"
FSFSOA-4-300	4"
Tech Sheet 1500	

Screwed



PN16/113, BS4504: 1989, Table 16, BSPP

1098	Thread
FSFSB-12	1/2"
FSFSB-34	3/4"
FSFSB-1	1"
FSFSB-114	1.1/4"
FSFSB-112	1.1/2"
FSFSB-2	2"
FSFSB-212	2.1/2"
FSFSB-3	3"
FSFSB-4	4"
Tech Sheet 1500	

PN40/113, BS4504: 1989, Table 40, BSPP

1098	Thread
FSFSB-12-300	1/2"
FSFSB-34-300	3/4"
FSFSB-1-300	1"
FSFSB-114-300	1.1/4"
FSFSB-112-300	1.1/2"
FSFSB-2-300	2"
FSFSB-212-300	2.1/2"
FSFSB-3-300	3"
FSFSB-4-300	4"
Tech Sheet 1500	

150lb, ANSI B16.5a/1992, ASA 150, BSPP

1098	Thread
FSFSA-112	1.1/2"
FSFSA-2	2"
FSFSA-212	2.1/2"
FSFSA-3	3"
Tech Sheet 1500	

300lb, ANSI B16.5a/1992, ASA 300, BSPP

1098	Thread
FSFSA-12-300	1/2"
FSFSA-34-300	3/4"
FSFSA-1-300	1"
FSFSA-112-300	1.1/2"
FSFSA-2-300	2"
Tech Sheet 1500	

Carbon Steel Flanges



Slip-On Plate Flanges, Table D

0264	ID mm
FPSOTD-32	32
FPSOTD-50	50
FPSOTD-65	65
FPSOTD-80	80
FPSOTD-100	100
FPSOTD-125	125
FPSOTD-150	150
FPSOTD-200	200
FPSOTD-250	250
FPSOTD-300	300

Tech Sheet 1500

Note: I.D. = Nominal bore of tube



Blank Flanges, Table D

0264	To Suit mm
FPBLTD-15	15
FPBLTD-20	20
FPBLTD-25	25
FPBLTD-32	32
FPBLTD-50	50
FPBLTD-65	65
FPBLTD-80	80
FPBLTD-100	100
FPBLTD-150	150
FPBLTD-200	200
FPBLTD-250	250
FPBLTD-300	300

Tech Sheet 1500



Screwed Boss Flanges, Table D, BSPP

0264	Thread
FBSTD-12	1/2"
FBSTD-34	3/4"
FBSTD-1	1"
FBSTD-114	1.1/4"
FBSTD-2	2"
FBSTD-212	2.1/2"
FBSTD-3	3"
FBSTD-4	4"
FBSTD-6	6" (6.1/2")

Tech Sheet 1500



Slip-On Boss Flanges, Table D

0264	ID mm
FBSOTD-2	50
FBSOTD-3	80
FBSOTD-4	100
FBSOTD-612	150 (6.1/2")
FBSOTD-658	150 (6.5/8")
FBSOTD-8	200
FBSOTD-10	250
FBSOTD-300	300

Tech Sheet 1500



Slip-On Plate Flanges, Table E

0264	ID mm
FPSOTE-15	15
FPSOTE-20	20
FPSOTE-25	25
FPSOTE-32	32
FPSOTE-40	40
FPSOTE-50	50
FPSOTE-65	65
FPSOTE-80	80
FPSOTE-100	100
FPSOTE-125	125
FPSOTE-150	150
FPSOTE-200	200
FPSOTE-250	250
FPSOTE-300	300

Tech Sheet 1500



Blank Flanges, Table E

0264	To Suit mm
FPBLTE-15	15
FPBLTE-25	25
FPBLTE-32	32
FPBLTE-40	40
FPBLTE-50	50
FPBLTE-65	65
FPBLTE-80	80
FPBLTE-100	100
FPBLTE-125	125
FPBLTE-150	150
FPBLTE-200	200
FPBLTE-250	250
FPBLTE-300	300

Tech Sheet 1500



Screwed Boss Flanges, Table E, BSPP

0264	Thread
FBSTE-12	1/2"
FBSTE-34	3/4"
FBSTE-1	1"
FBSTE-114	1.1/4"
FBSTE-112	1.1/2"
FBSTE-2	2"
FBSTE-212	2.1/2"
FBSTE-3	3"
FBSTE-4	4"
FBSTE-5	5"
FBSTE-6	6" (6.1/2")

Tech Sheet 1500



Slip-On Boss Flanges, Table E

0264	ID mm
FBSOTE-12	15
FBSOTE-34	20
FBSOTE-1	25
FBSOTE-114	32
FBSOTE-112	40
FBSOTE-2	50
FBSOTE-212	65
FBSOTE-3	80
FBSOTE-4	100
FBSOTE-5	125
FBSOTE-612	150 (6.1/2")
FBSOTE-658	150 (6.5/8")
FBSOTE-8	200
FBSOTE-10	250

Tech Sheet 1500



For Stainless Steel Flanges
see page 1195

FLEXIBLE RUBBER BELLOWS



Moulded Rubber Bellows are designed to compensate for misalignment, neutralise movement and reduce noise through vibration in pipelines. They effectively dampen the transmission of sound and vibration and can be used in many applications with various medias including water, oils, chemicals and gases when the correct body material is specified.

Other body materials available on request:

- Butyl
- Nitrile
- Hypalon

Working Temperature:
-30°C to +110°C

Maximum Working Pressure: 16 bar

Other flange drillings are also available on request.

PN16 Flanged Connector, BS4504



Nitrile

0388	Flange Size	ID mm	Length mm
FRB-PN16-114NBR	1.1/4"	32	130
FRB-PN16-112NBR	1.1/2"	40	130
FRB-PN16-2NBR	2"	50	130
FRB-PN16-212NBR	2.1/2"	65	130
FRB-PN16-3NBR	3"	80	130
FRB-PN16-4NBR	4"	100	130
FRB-PN16-5NBR	5"	125	130
FRB-PN16-6NBR	6"	150	130
FRB-PN16-8NBR	8"	200	130
FRB-PN16-10NBR	10"	250	130
FRB-PN16-12NBR	12"	300	130

Tech Sheet 10305



EPDM

0388	Flange Size	ID mm	Length mm
FRB-PN16-114EPDM	1.1/4"	32	130
FRB-PN16-112EPDM	1.1/2"	40	130
FRB-PN16-2EPDM	2"	50	130
FRB-PN16-212EPDM	2.1/2"	65	130
FRB-PN16-3EPDM	3"	80	130
FRB-PN16-4EPDM	4"	100	130
FRB-PN16-5EPDM	5"	125	130
FRB-PN16-6EPDM	6"	150	130
FRB-PN16-8EPDM	8"	200	130
FRB-PN16-10EPDM	10"	250	130
FRB-PN16-12EPDM	12"	300	130

Tech Sheet 10305



Nitrile, Tied

0388	Flange Size	ID mm	Length mm
RBT-PN16-114NBR	1.1/4"	32	130
RBT-PN16-112NBR	1.1/2"	40	130
RBT-PN16-2NBR	2"	50	130
RBT-PN16-212NBR	2.1/2"	65	130
RBT-PN16-3NBR	3"	80	130
RBT-PN16-4NBR	4"	100	130
RBT-PN16-5NBR	5"	125	130
RBT-PN16-6NBR	6"	150	130
RBT-PN16-8NBR	8"	200	130
RBT-PN16-10NBR	10"	250	130
RBT-PN16-12NBR	12"	300	130

Tech Sheet 10305



EPDM, Tied

0388	Flange Size	ID mm	Length mm
RBT-PN16-114EPDM	1.1/4"	32	130
RBT-PN16-112EPDM	1.1/2"	40	130
RBT-PN16-2EPDM	2"	50	130
RBT-PN16-212EPDM	2.1/2"	65	130
RBT-PN16-3EPDM	3"	80	130
RBT-PN16-4EPDM	4"	100	130
RBT-PN16-5EPDM	5"	125	130
RBT-PN16-6EPDM	6"	150	130
RBT-PN16-8EPDM	8"	200	130
RBT-PN16-10EPDM	10"	250	130
RBT-PN16-12EPDM	12"	300	130

Tech Sheet 10305

BSPB Threaded Connector, Double Sphere



Nitrile

0388	Thread	ID mm	Length mm
FRB-BSP-1/2NBR	1/2"	15	203
FRB-BSP-3/4NBR	3/4"	20	203
FRB-BSP-1NBR	1"	25	203
FRB-BSP-11/4NBR	1.1/4"	32	203
FRB-BSP-11/2NBR	1.1/2"	40	203
FRB-BSP-2NBR	2"	50	203
FRB-BSP-21/2NBR	2.1/2"	65	240
FRB-BSP-3NBR	3"	80	240

Tech Sheet 10306



EPDM

0388	Thread	ID mm	Length mm
FRB-BSP-1/2EPDM	1/2"	15	203
FRB-BSP-3/4EPDM	3/4"	20	203
FRB-BSP-1EPDM	1"	25	203
FRB-BSP-11/4EPDM	1.1/4"	32	203
FRB-BSP-11/2EPDM	1.1/2"	40	203
FRB-BSP-2EPDM	2"	50	203
FRB-BSP-21/2EPDM	2.1/2"	65	240
FRB-BSP-3EPDM	3"	80	240

Tech Sheet 10306

Mild Steel Flanged Hose Tails

Table E, Mild Steel

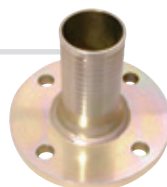
0297	To Suit Hose ID
FEHT2	2"
FEHT3	3"
FEHT4	4"

Tech Sheet 20469

NP16, Mild Steel

0297	To Suit Hose ID
FNP16HT112	1.1/2"
FNP16HT2	2"
FNP16HT212	2.1/2"
FNP16HT3	3"
FNP16HT4	4"
FNP16HT6	6"
FNP16HT8	8"

Tech Sheet 20469



Flanged Hose Tail Table D, Mild Steel

0297	To Suit Hose ID
FDHT2	2"
FDHT3	3"
FDHT4	4"
FDHT5	5"
FDHT6	6"

Tech Sheet 20469

ASA150, Mild Steel

0297	To Suit Hose ID
FASA150HT2	2"

Tech Sheet 20469

Stainless Steel Flanged Hose Tails

stainless steel

Table E, Stainless Steel

0297	To Suit Hose ID
FHSESS2	2"

Tech Sheet 20469

NP16, Stainless Steel

0297	To Suit Hose ID
FHSNP16SS2	2"
FHSNP16SS3	3"

Tech Sheet 20469

ASA 150, Stainless Steel

0297	To Suit Hose ID
FHSASASS2	2"

Tech Sheet 20469

Rubber Gaskets



Table D, Full Face

0296	ID
GRD2	2"
GRD3	3"
GRD4	4"
GRD6	6"
GRD8	8"



IBC PN16

0296	ID
GRIBCNP162	2"
GRIBCNP163	3"
GRIBCNP164	4"
GRIBCNP166	6"
GRIBCNP168	8"



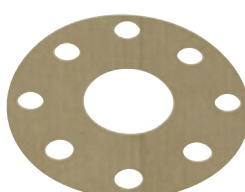
IBC PN16 & Table D

0296	ID
GKIBCNP162	2"
GKIBCNP163	3"
GKIBCNP164	4"
GKIBCNP166	6"



PN16, Full Face

0296	ID
GRNP162	2"
GRNP163	3"
GRNP164	4"
GRNP166	6"
GRNP168	8"



PN16, Full Face (Klinger)

0296	ID
GKNP163	3"
GKNP166	6"

Fibre Gaskets



Table D, Full Face, (Top Graph Araflex)

0296	ID
GKD2	2"
GKD3	3"



For **Stainless Steel Flanges**
see page 1195



NONE ASBESTOS FLANGE GASKETS



IBC Gaskets

Maximum temperature/pressure can't be used simultaneously and are dependant on thickness.



N34 150lb, ASME B16.5/B16.21

0296	ID
GS12-150	1/2"
GS34-150	3/4"
GS1-150	1"
GS114-150	1.1/4"
GS112-150	1.1/2"
GS2-150	2"
GS212-150	2.1/2"
GS3-150	3"
GS4-150	4"

Tech Sheet 2023

N34 300lb, ASME B16.5/B16.21

0296	ID
GS12-300	1/2"
GS1-300	1"
GS112-300	1.1/2"
GS3-300	3"

Tech Sheet 2023

N34 PN16, DIN Standard DIN-DVGW 96.01 e-845

0296	ID
GSPN16-34	3/4"
GSPN16-1	1"
GSPN16-114	1.1/4"
GSPN16-112	1.1/2"
GSPN16-2	2"
GSPN16-212	2.1/2"
GSPN16-3	3"
GSPN16-4	4"

Tech Sheet 2023

N34 PN40, DIN Standard DIN-DVGW 96.01 e-845

0296	ID
GSPN40-2	2"
GSPN40-3	3"

Tech Sheet 2023

Full Face Gaskets

Maximum temperature/pressure can't be used simultaneously and are dependant on thickness.



N34 150lb, ASME B16.5/B16.21

0296	ID
GSFF12-150	1/2"
GSFF1-150	1"
GSFF114-150	1.1/4"
GSFF112-150	1.1/2"
GSFF2-150	2"
GSFF212-150	2.1/2"
GSFF3-150	3"

Tech Sheet 2023

N34 300lb, ASME B16.5/B16.21

0296	ID
GSFF1-300	1"
GSFF2-300	2"

Tech Sheet 2023

N34 PN16, DIN Standard DIN-DVGW 96.01 e-845

0296	ID
GSFF16-12	1/2"
GSFF16-1	1"
GSFF16-114	1.1/4"
GSFF16-112	1.1/2"
GSFF16-2	2"
GSFF16-212	2.1/2"
GSFF16-3	3"
GSFF16-4	4"

Tech Sheet 2023

N34 PN40, DIN Standard DIN-DVGW 96.01 e-845

0296	ID
GSFF40-1	1"
GSFF40-112	1.1/2"
GSFF40-2	2"
GSFF40-4	4"

Tech Sheet 2023

Customers who bought from this page also purchased...

TOTAL

Pipe Wrenches...see page 1734



JOINTING COMPOUNDS & SEALANTS

PTFE Thread Sealing Tape



To BS4375

1000	Size
PTFE	0.075mm x 1/2" x 10 Metres x 0.24g/cm
PTF-40	0.100mm x 1/2" x 10 Metres x 0.40g/cm
PTF-80	0.100mm x 19mm x 10 Metres x 0.80g/cm

Non flammable thread sealant. Resistant to all acids, alkalis and solvents. Suitable for use with oxygen and potable water.



WRAS, 0.075mm Gauge, 12 Metres, Pack of 10

0241	Colour	Width mm
M700WHI1212	White	12

For use with gas & potable water



Gas Approved, 5 Metres

0241	Colour	Width mm
PTFE-GAS	White	12

PTFE Thread Seal Tape



1000	Description	Width mm	Roll Length Metres
TAPE	Tape White	12	12
PTFE25MM	Tape White	25	12

Jointing Paste

Resistant to gas, steam, water, petrol, oil and mineral acids

- Easy break
- Lead free
- Complies to BS6956 Part 5 1992

Temperature Resistance:
A: -40°C to 400°C
B: -40°C to 650°C



Stag A

1092	Volume Grams
STAGA	400

Tech Sheet 10798



Stag B

1092	Volume Grams
STAGB	500

Tech Sheet 10798

Plate Tapes

Gas board approved to PRS10 high temperature gas flue closure plate sealing tape.



PRS10 Closure Plate Tape, 25 Metres

0241	Colour	Width mm
M293GAS5025	Grey	50

Boss White

BOSS White Pipe Jointing Compound: For steam, air, natural gas and non-potable water applications. Conforms to BS6956 Part 5: 1992.



White

1092	Volume Grams
MIBOSSW400	400

Cloth Tapes

High tack adhesive for polythene sheet joining, lagging, heating, ventilation and packaging.



Standard Duct Cloth Tape, 50 Metres

0241	Colour	Width mm
M24SSIL4850	Silver	48
M24SBLA4850	Black	48
M24SWHI4850	White	48
M24SSIL7250	Silver	72
M24SSIL9650	Silver	96

Hank Dressed Hemp



To be used with suitable Jointing Paste.

1092	Weight
2046-1687	1/2lb

55 Thread Sealing Cord

Particularly suitable for metal and plastic threaded fittings.

Potable water: WRC listed for use with potable water up to 85°C.

Meets BS 6920.KTW recommendation for hot and cold water.

Gas and water: Carries the German DVGW approval (No.DV-5142 AUO 166), together with DIN 30660.

- Tested in accordance with EN751-2 Class Arp.
- Replaces hemp/tapes and pastes
- Disassembly can be achieved easily with normal tools



0753	Length Metres
LOC-483283	50
LOC-270153	160

Tech Sheet 80

Thread Sealant



For B85-E85 & Diesel

1092	Volume Millilitres
GASOILA2	280