



# techhose

QUALITY CONNECTIONS

Hydraulics

Pneumatics  
& Vacuum

Industrial

Compressed Air  
& Ring Main

Process &  
Instrumentation

---

## Hydraulics

---

Hydraulic Threaded Adaptors & Flanges



Our extensive range of adaptors includes stock of more than 3000 different variations of JIC, SAE, Metric, BSP, BSPT, NPTF and NPSM made from mild steel (BS EN 10277:3:199 – 230M07Pb).



We specialise in not just one type of product – we have the flexibility to produce special requirements alongside our standard product ranges. This diversity of ranges and sizes, combines with our unparalleled customer service and technical assistance.

**The market for hydraulic adaptors is a truly diverse one. Hydraulics are used in almost every facet of industry: Agriculture, Transport, Waste, Defence, Manufacturing, Marine, Construction, Mining, Engineering, etc. Hydraulic power plays a crucial global role in keeping these and other industries moving.**



## THREADS AND DIMENSIONS

- BSP adaptor dimensions are compatible with ISO 8434-6 and BS 5200.
- BSP DIN spec adaptors are to DIN 3852 Form A.
- BSPP and NCB threads are to BS EN ISO 228-1.
- BSPT threads are to BS EN 10226-1.
- JIC adaptors are to SAE J514.
- JIC and SAE threads are to BS 1580.
- JIS are to JIS B 8363
- Metric threads are to BS 3643-2.
- NPTF threads are to ANSI B1 20.3

## PLATING

- Acid zinc plating is to ISO 2081, Fe/Zn8/A/T2.
- Fe = Ferrous substrate.
- Zn8 = Zinc coating 8 microns thick.
- A = Clear passivate.
- T2 = Application of organic or inorganic sealants.

## MATERIAL

- Steel used for stock parts is 230M07Pb/11SMnPb37 as to BE EN 10277-3.
- Stainless is grade 316 to BS EN 10277-1.



# HYDRAULIC ADAPTORS

## Male/Male Adaptors

### Equal BSPP Male x BSPP Male 60° Cone



0014	Thread	Thread
1BP0202	1/8"	1/8"
1BP0404	1/4"	1/4"
1BP0606	3/8"	3/8"
1BP0808	1/2"	1/2"
1BP1010	5/8"	5/8"
1BP1212	3/4"	3/4"
1BP1616	1"	1"
1BP2020	1.1/4"	1.1/4"
1BP2424	1.1/2"	1.1/2"
1BP2828	1.3/4"	1.3/4"
1BP3232	2"	2"
1BP4040	2.1/2"	2.1/2"
1BP4848	3"	3"
1BP6464	4"	4"

Tech Sheet 20000

### Unequal BSPP Male x BSPP Male 60° Cone



0014	Thread	Thread
1BP0204	1/8"	1/4"
1BP0206	1/8"	3/8"
1BP0208	1/8"	1/2"
1BP0406	1/4"	3/8"
1BP0408	1/4"	1/2"
1BP0410	1/4"	5/8"
1BP0412	1/4"	3/4"
1BP0416	1/4"	1"
1BP0420	1/4"	1.1/4"
1BP0432	1/4"	2"
1BP0608	3/8"	1/2"
1BP0610	3/8"	5/8"
1BP0612	3/8"	3/4"
1BP0616	3/8"	1"
1BP0620	3/8"	1.1/4"
1BP0624	3/8"	1.1/2"
1BP0810	1/2"	5/8"
1BP0812	1/2"	3/4"
1BP0816	1/2"	1"
1BP0820	1/2"	1.1/4"
1BP0824	1/2"	1.1/2"
1BP0832	1/2"	2"
1BP1012	5/8"	3/4"
1BP1016	5/8"	1"
1BP1020	5/8"	1.1/4"
1BP1216	3/4"	1"
1BP1220	3/4"	1.1/4"
1BP1224	3/4"	1.1/2"
1BP1232	3/4"	2"
1BP1620	1"	1.1/4"
1BP1624	1"	1.1/2"
1BP1632	1"	2"
1BP1640	1"	2.1/2"
1BP2024	1.1/4"	1.1/2"
1BP2032	1.1/4"	2"
1BP2428	1.1/2"	1.3/4"
1BP2432	1.1/2"	2"
1BP2440	1.1/2"	2.1/2"
1BP2832	1.3/4"	2"

Tech Sheet 20000

### BSPP Male x BSPP Male 60° Cone DIN 3852 Form A



0014	Thread	Thread
1BPA0202	1/8"	1/8"
1BPA0204	1/8"	1/4"
1BPA0404	1/4"	1/4"
1BPA0406	1/4"	3/8"
1BPA0408	1/4"	1/2"
1BPA0606	3/8"	3/8"
1BPA0608	3/8"	1/2"
1BPA0808	1/2"	1.1/4"
1BPA0812	1/2"	3/4"
1BPA0816	1/2"	1"
1BPA1212	3/4"	3/4"
1BPA1216	3/4"	1"
1BPA1616	1"	1"
1BPA1620	1"	1.1/4"
1BPA1624	1"	1.1/2"
1BPA2020	1.1/4"	1.1/4"
1BPA2024	1.1/4"	1.1/2"
1BPA2424	1.1/2"	1.1/2"
1BPA2432	1.1/2"	2"
1BPA3232	2"	2"

Tech Sheet 20000

### BSPP Male x BSPP Male 60° Cone with Restrictor



0014	Thread	Thread	Restrictor
1BPR0404-1/32	1/4"	1/4"	1/32"
1BPR0404-1	1/4"	1/4"	1mm
1BPR0404-1/16	1/4"	1/4"	1/16"
1BPR0406-1/32	1/4"	3/8"	1/32"
1BPR0406-1	1/4"	3/8"	1mm
1BPR0406-1/16	1/4"	3/8"	1/16"
1BPR0408-1/32	1/4"	1/2"	1/32"
1BPR0408-1/16	1/4"	1/2"	1/16"
1BPR0606-1/32	3/8"	3/8"	1/32"
1BPR0606-1	3/8"	3/8"	1mm
1BPR0606-1/16	3/8"	3/8"	1/16"
1BPR0608-1/32	3/8"	1/2"	1/32"
1BPR0608-1	3/8"	1/2"	1mm
1BPR0608-3	3/8"	1/2"	3mm
1BPR0612-1/16	3/8"	3/4"	1/16"
1BPR0808-1/32	1/2"	1/2"	1/32"
1BPR0808-1	1/2"	1/2"	1mm
1BPR0808-1/16	1/2"	1/2"	1/16"

Tech Sheet 20000

### BSPP Male x BSPP Male 60° Cone 174 Spec.



0014	Thread	Thread
00100	1/8"	1/4"
00114	1/4"	1/4"
00117	1/4"	3/8"
00101	1/4"	1/2"
00120	3/8"	3/8"
00102	3/8"	1/2"
00103	3/8"	3/4"
00125	1/2"	1/2"
00104	1/2"	3/4"
00116	1/2"	1"
00115	3/4"	3/4"
00106	3/4"	1"
00118	1"	1"
00119	1"	1.1/4"
00109	1.1/4"	1.1/4"
00110	1.1/4"	1.1/2"
00129	1.1/4"	2"
00111	1.1/2"	1.1/2"
00112	1.1/2"	2"
00113	2"	2"

Tech Sheet 20000

### BSPP Male x BSPP Male 60° Cone BS5200



0014	Thread	Thread
52021	1/2"	1/2"

Tech Sheet 20000

### BSPP Male x BSPP Male 60° Cone with Restrictor Blank Only



0014	Thread	Thread mm
13080	1/4"	1/4"
13081	1/4"	3/8"
13082	1/4"	1/2"
13083	3/8"	3/8"
13084	3/8"	1/2"
13089	3/8"	3/4"
13085	1/2"	1/2"
13086	1/2"	3/4"
13088	3/4"	1"

Tech Sheet 20000

# HYDRAULIC ADAPTORS

## Male/Male Adaptors



### BSPP Male 60° Cone x BSPT Male

0014	Thread	Thread
1BP02T02	1/8"	1/8"
1BP02T04	1/8"	1/4"
1BP02T06	1/8"	3/8"
1BP04T02	1/4"	1/8"
1BP04T04	1/4"	1/4"
1BP04T06	1/4"	3/8"
1BP04T08	1/4"	1/2"
1BP04T12	1/4"	3/4"
1BP06T02	3/8"	1/8"
1BP06T04	3/8"	1/4"
1BP06T06	3/8"	3/8"
1BP06T08	3/8"	1/2"
1BP06T12	3/8"	3/4"
1BP06T16	3/8"	1"
1BP08T02	1/2"	1/8"
1BP08T04	1/2"	1/4"
1BP08T06	1/2"	3/8"
1BP08T08	1/2"	1/2"
1BP08T10	1/2"	5/8"
1BP08T12	1/2"	3/4"
1BP08T16	1/2"	1"
1BP08T20	1/2"	1.1/4"
1BP10T06	5/8"	3/8"
1BP10T08	5/8"	1/2"
1BP10T10	5/8"	5/8"
1BP10T12	5/8"	3/4"
1BP12T04	3/4"	1/4"
1BP12T06	3/4"	3/8"
1BP12T08	3/4"	1/2"
1BP12T12	3/4"	3/4"
1BP12T16	3/4"	1"
1BP12T20	3/4"	1.1/4"
1BP12T24	3/4"	1.1/2"
1BP16T06	1"	3/8"
1BP16T08	1"	1/2"
1BP16T12	1"	3/4"
1BP16T16	1"	1"
1BP16T20	1"	1.1/4"
1BP16T24	1"	1.1/2"
1BP16T32	1"	2"
1BP20T16	1.1/4"	1"
1BP20T20	1.1/4"	1.1/4"
1BP20T24	1.1/4"	1.1/2"
1BP20T32	1.1/4"	2"
1BP24T16	1.1/2"	1"
1BP24T20	1.1/2"	1.1/4"
1BP24T24	1.1/2"	1.1/2"
1BP24T32	1.1/2"	2"
1BP32T16	2"	1"
1BP32T20	2"	1.1/4"
1BP32T24	2"	1.1/2"
1BP32T32	2"	2"
1BP32T40	2"	2.1/2"
1BP32T48	2"	3"
1BP40T40	2.1/2"	2.1/2"

Tech Sheet 20000



### BSPP Male 60° Cone x SAE O-Ring Face Seal Male

0014	Thread	Thread
74005	1/8"	9/16"
74000	1/4"	9/16"
74006	1/4"	11/16"
74001	3/8"	11/16"
74007	3/8"	13/16"
74015	1/2"	11/16"
74002	1/2"	13/16"
74008	1/2"	1"
74011	1/2"	1.3/16"
74014	5/8"	1.3/16"
74009	3/4"	1"
74003	3/4"	1.3/16"
74004	1"	1.7/16"
74012	1"	1.11/16"
74010	1.1/4"	1.11/16"

Tech Sheet 20000



### BSPP Male 60° Cone x SAE Male 45° External Flare

0014	Thread	Thread
13200	3/8"	5/8"

Tech Sheet 20000



### BSPT Male x JIS Male (BSPP Threads)

0014	Thread	Thread
00313-JIS	3/8"	3/8"

Tech Sheet 20000



### BSPT Male x NPTF Male

0014	Thread	Thread
1BNT0204	1/8"	1/4"
1BNT0402	1/4"	1/8"
1BNT0404	1/4"	1/4"
1BNT0406	1/4"	3/8"
1BNT0606	3/8"	3/8"
1BNT0604	3/8"	1/4"
1BNT0808	1/2"	1/2"
1BNT1212	3/4"	3/4"
1BNT1616	1"	1"
1BNT2420	1.1/2"	1.1/4"
1BNT2424	1.1/2"	1.1/2"
1BNT3232	2"	2"
1BNT4040	2.1/2"	2.1/2"

Tech Sheet 20000



### BSPT Male x BSPT Male

0014	Thread	Thread
1BT0202	1/8"	1/8"
1BT0204	1/8"	1/4"
1BT0404	1/4"	1/4"
1BT0406	1/4"	3/8"
1BT0408	1/4"	1/2"
1BT0606	3/8"	3/8"
1BT0608	3/8"	1/2"
1BT0808	1/2"	1/2"
1BT0812	1/2"	3/4"
1BT1212	3/4"	3/4"
1BT1216	3/4"	1"
1BT1220	3/4"	1.1/4"
1BT1616	1"	1"
1BT1620	1"	1.1/4"
1BT1624	1"	1.1/2"
1BT2020	1.1/4"	1.1/4"
1BT2024	1.1/4"	1.1/2"
1BT2032	1.1/4"	2"
1BT2424	1.1/2"	1.1/2"
1BT2432	1.1/2"	2"
1BT3232	2"	2"
1BT4040	2.1/2"	2.1/2"
1BT4848	3"	3"

Tech Sheet 20000



### JIS Male x JIS Male 30° Cone (Metric Threads)

0014	Thread mm
9741-14	14
9741-18	18
9741-22	22
9741-24	24
9741-30	30
9741-33	33

Tech Sheet 20000



### JIS Male x JIS Male 30° Cone (BSPP Threads)

0014	Thread
7801-04-04	1/4"
7801-06-06	3/8"
7801-08-08	1/2"
7801-12-12	3/4"

Tech Sheet 20000

# HYDRAULIC ADAPTORS

## Male/Male Adaptors



### NPTF Male x BSPP Male 60° Cone

0014	Thread	Thread
1NB0202	1/8"	1/8"
1NB0204	1/8"	1/4"
1NB0206	1/8"	3/8"
1NB0208	1/8"	1/2"
1NB0402	1/4"	1/8"
1NB0404	1/4"	1/4"
1NB0406	1/4"	3/8"
1NB0408	1/4"	1/2"
1NB0412	1/4"	3/4"
1NB0602	3/8"	1/8"
1NB0604	3/8"	1/4"
1NB0606	3/8"	3/8"
1NB0608	3/8"	1/2"
1NB0610	3/8"	5/8"
1NB0612	3/8"	3/4"
1NB0802	1/2"	1/8"
1NB0804	1/2"	1/4"
1NB0806	1/2"	3/8"
1NB0808	1/2"	1/2"
1NB0810	1/2"	5/8"
1NB0812	1/2"	3/4"
1NB0816	1/2"	1"
1NB1204	3/4"	1/4"
1NB1206	3/4"	3/8"
1NB1208	3/4"	1/2"
1NB1210	3/4"	5/8"
1NB1212	3/4"	3/4"
1NB1216	3/4"	1"
1NB1220	3/4"	1.1/4"
1NB1224	3/4"	1.1/2"
1NB1604	1"	1/4"
1NB1606	1"	3/8"
1NB1608	1"	1/2"
1NB1612	1"	3/4"
1NB1616	1"	1"
1NB1620	1"	1.1/4"
1NB2012	1.1/4"	3/4"
1NB2016	1.1/4"	1"
1NB2020	1.1/4"	1.1/4"
1NB2024	1.1/4"	1.1/2"
1NB2032	1.1/4"	2"
1NB2416	1.1/2"	1"
1NB2420	1.1/2"	1.1/4"
1NB2424	1.1/2"	1.1/2"
1NB2432	1.1/2"	2"
1NB3216	2"	1"
1NB3220	2"	1.1/4"
1NB3224	2"	1.1/2"
1NB3232	2"	2"
1NB3240	2"	2.1/2"
1NB4032	2.1/2"	2"
1NB4040	2.1/2"	2.1/2"
1NB4832	3"	2"
1NB4840	3"	2.1/2"

Tech Sheet 20000



### NPTF Male x NPTF Male

0014	Thread	Thread
1N0202	1/8"	1/8"
1N0204	1/8"	1/4"
1N0208	1/8"	1/2"
1N0404	1/4"	1/4"
1N0406	1/4"	3/8"
1N0408	1/4"	1/2"
1N0412	1/4"	3/4"
1N0606	3/8"	3/8"
1N0608	3/8"	1/2"
1N0808	1/2"	1/2"
1N0812	1/2"	3/4"
1N0816	1/2"	1"
1N0820	1/2"	1.1/4"
1N0824	1/2"	1.1/2"
1N1212	3/4"	3/4"
1N1216	3/4"	1"
1N1220	3/4"	1.1/4"
1N1616	1"	1"
1N1620	1"	1.1/4"
1N2020	1.1/4"	1.1/4"
1N2024	1.1/4"	1.1/2"
1N2032	1.1/4"	2"
1N2432	1.1/2"	2"
1N4040	2.1/2"	2.1/2"

Tech Sheet 20000



### Metric Male x BSPP Male 60° Cone

0014	Thread	Thread
10542	M8 x 1	1/8"
10544	M10 x 1	1/8"
10545	M10 x 1	1/4"
10548	M10 x 1	3/8"
10543	M12 x 1	1/8"
10546	M12 x 1	1/4"
10541	M14 x 1	1/4"

Tech Sheet 20000



### Metric Male x BSPP Male 60° Cone to DIN 3852 Form A

0014	Thread	Thread
60500	M22 x 1.5	1/2"

Tech Sheet 20000



### Metric Male x Metric Male

0014	Thread	Thread
1MP1010	M10 x 1.5	M10 x 1.5
1MP1012	M10 x 1.5	M12 x 1.5
1MP1014	M10 x 1.5	M14 x 1.5
1MP1212	M12 x 1.5	M12 x 1.5
1MP1214	M12 x 1.5	M14 x 1.5
1MP1216	M12 x 1.5	M16 x 1.5
1MP1414	M14 x 1.5	M14 x 1.5
1MP1416	M14 x 1.5	M16 x 1.5
1MP1418	M14 x 1.5	M18 x 1.5
1MP1420	M14 x 1.5	M20 x 1.5
1MP1616	M16 x 1.5	M16 x 1.5
1MP1618	M16 x 1.5	M18 x 1.5
1MP1620	M16 x 1.5	M20 x 1.5
1MP1622	M16 x 1.5	M22 x 1.5
1MP1626	M16 x 1.5	M26 x 1.5
1MP1818	M18 x 1.5	M18 x 1.5
1MP1820	M18 x 1.5	M20 x 1.5
1MP1822	M18 x 1.5	M22 x 1.5
1MP1824	M18 x 1.5	M24 x 1.5
1MP1826	M18 x 1.5	M26 x 1.5
1MP2020	M20 x 1.5	M20 x 1.5
1MP2022	M20 x 1.5	M22 x 1.5
1MP2024	M20 x 1.5	M24 x 1.5
1MP2026	M20 x 1.5	M26 x 1.5
1MP2222	M22 x 1.5	M22 x 1.5
1MP2224	M22 x 1.5	M24 x 1.5
1MP2226	M22 x 1.5	M26 x 1.5
1MP2230	M22 x 1.5	M30 x 1.5
1MP2424	M24 x 1.5	M24 x 1.5
1MP2626	M26 x 1.5	M26 x 1.5
1MP3030	M30 x 1.5	M30 x 1.5
1MP3038	M30 x 1.5	M38 x 1.5
1MP3838	M38 x 1.5	M38 x 1.5

Tech Sheet 20000

# HYDRAULIC ADAPTORS

## Male/Male Adaptors



### Metric Male x BSPP Male 60° Cone

0014	Thread	Thread
1MBP1004	M10 x 1.5	1/4"
1MBP1202	M12 x 1.5	1/8"
1MBP1204	M12 x 1.5	1/4"
1MBP1206	M12 x 1.5	3/8"
1MBP1208	M12 x 1.5	1/2"
1MBP1402	M14 x 1.5	1/8"
1MBP1404	M14 x 1.5	1/4"
1MBP1406	M14 x 1.5	3/8"
1MBP1408	M14 x 1.5	1/2"
1MBP1410	M14 x 1.5	5/8"
1MBP1604	M16 x 1.5	1/4"
1MBP1606	M16 x 1.5	3/8"
1MBP1608	M16 x 1.5	1/2"
1MBP1610	M16 x 1.5	5/8"
1MBP1612	M16 x 1.5	3/4"
1MBP1804	M18 x 1.5	1/4"
1MBP1806	M18 x 1.5	3/8"
1MBP1808	M18 x 1.5	1/2"
1MBP1810	M18 x 1.5	5/8"
1MBP1812	M18 x 1.5	3/4"
1MBP1816	M18 x 1.5	1"
1MBP2004	M20 x 1.5	1/4"
1MBP2006	M20 x 1.5	3/8"
1MBP2008	M20 x 1.5	1/2"
1MBP2012	M20 x 1.5	3/4"
1MBP2204	M22 x 1.5	1/4"
1MBP2206	M22 x 1.5	3/8"
1MBP2208	M22 x 1.5	1/2"
1MBP2212	M22 x 1.5	3/4"
1MBP2216	M22 x 1.5	1"
1MBP2406	M24 x 1.5	3/8"
1MBP2408	M24 x 1.5	1/2"
1MBP2412	M24 x 1.5	3/4"
1MBP2608	M26 x 1.5	1/2"
1MBP2610	M26 x 1.5	5/8"
1MBP2612	M26 x 1.5	3/4"
1MBP2616	M26 x 1.5	1"
1MBP3012	M30 x 1.5	3/4"
1MBP3016	M30 x 1.5	1"
1MBP3020	M30 x 1.5	1.1/4"
1MBP3616	M36 x 1.5	1"
1MBP3816	M38 x 1.5	1"
1MBP3820	M38 x 1.5	1.1/4"

Tech Sheet 20000



### SAE O-Ring Boss Male x BSPP Male 60° Cone Less O-Ring

0014	Thread	Thread
01329	1/4"	1/8"
01326	1/4"	1/4"
01300	3/8"	1/4"
01323	3/8"	3/8"
01309	7/16"	1/8"
01301	7/16"	1/4"
01303	7/16"	3/8"
01302	7/16"	1/2"
01304	1/2"	1/4"
01305	1/2"	3/8"
01341	1/2"	1/2"
01306	9/16"	1/4"
01307	9/16"	3/8"
01308	9/16"	1/2"
01310	3/4"	1/4"
01311	3/4"	3/8"
01312	3/4"	1/2"
01313	3/4"	5/8"
01314	3/4"	3/4"
01315	5/8"	1/4"
01316	5/8"	3/8"
01344	5/8"	1/2"
01346	7/8"	1/4"
01317	7/8"	3/8"
01318	7/8"	1/2"
01319	7/8"	5/8"
01320	7/8"	3/4"
01335	7/8"	1"
01321	1.1/16"	3/8"
01322	1.1/16"	1/2"
01337	1.1/16"	5/8"
01324	1.1/16"	3/4"
01325	1.1/16"	1"
01348	1.1/16"	1.1/4"
01345	1.3/16"	3/4"
01343	1.5/16"	1/2"
01327	1.5/16"	3/4"
01328	1.5/16"	1"
01338	1.5/16"	1.1/4"
01330	1.5/16"	1.1/2"
01331	1.5/8"	3/4"
01332	1.5/8"	1"
01333	1.5/8"	1.1/4"
01339	1.5/8"	1.1/2"
01342	1.7/8"	1.1/4"
01340	1.7/8"	1.1/2"

Tech Sheet 20000



### NPT Male x SAE Male 45° External Flare

0014	Thread	Thread
01050	1/8"	7/16"
01052	1/4"	7/16"
01054	1/4"	5/8"
01056	3/8"	7/16"
01058	3/8"	5/8"
01057	3/8"	3/4"
01060	1/2"	5/8"
01061	1/2"	3/4"
01062	1/2"	7/8"
01063	1/2"	1.1/16"
01065	3/4"	3/4"
01066	3/4"	7/8"
01064	3/4"	1.5/8"
01067	3/4"	1.1/16"

Tech Sheet 20000



### SAE O-Ring Boss Male x SAE O-Ring Face Seal Male Less O-Rings

0014	Thread	Thread
21300	7/16"	9/16"
21301	7/16"	11/16"
21302	9/16"	11/16"
21303	9/16"	13/16"
21304	3/4"	11/16"
21305	3/4"	13/16"
21307	7/8"	13/16"
21308	7/8"	1"
21310	1.1/16"	1.3/16"
21311	1.1/16"	1.7/16"
21312	1.5/16"	1.3/16"
21313	1.5/16"	1.7/16"

Tech Sheet 20000

# HYDRAULIC ADAPTORS

## Male/Fixed Female Adaptors



### BSPP Male 60° Cone x BSPP Fixed Female Extended

0014	Male Thread	Female Thread
4BX02	1/8"	1/8"
4BX0204	1/8"	1/4"
4BX0206	1/8"	3/8"
4BX0208	1/8"	1/2"
4BX0402	1/4"	1/8"
4BX04	1/4"	1/4"
4BX0406	1/4"	3/8"
4BX0408	1/4"	1/2"
4BX0412	1/4"	3/4"
4BX0604	3/8"	1/4"
4BX06	3/8"	3/8"
4BX0608	3/8"	1/2"
4BX0612	3/8"	3/4"
4BX0806	1/2"	3/8"
4BX08	1/2"	1/2"
4BX0812	1/2"	3/4"
4BX0816	1/2"	1"
4BX0820	1/2"	1.1/4"
4BX1208	3/4"	1/2"
4BX12	3/4"	3/4"
4BX1216	3/4"	1"
4BX1220	3/4"	1.1/4"
4BX1224	3/4"	1.1/2"
4BX1612	1"	3/4"
4BX16	1"	1"
4BX1620	1"	1.1/4"
4BX1624	1"	1.1/2"
4BX2020	1.1/4"	1.1/4"
4BX2024	1.1/4"	1.1/2"
4BX2032	1.1/4"	2"
4BX2420	1.1/2"	1.1/4"
4BX24	1.1/2"	1.1/2"

Tech Sheet 20000



### BSPP Male 60° Cone x BSPT Female Extended

0014	Male Thread	Female Thread
16091	1/4"	1/8"
16090	1/4"	1/4"
16092	3/8"	1/4"
16093	3/8"	3/8"
16089	3/8"	1/2"
16094	1/2"	1/2"
16102	3/4"	1/2"
16095	3/4"	3/4"
16103	3/4"	1"
16096	1"	1"

Tech Sheet 20000



### BSPP Male 60° Cone x Metric Female 1.5mm Pitch Extended

0014	Male Thread	Female Thread mm
19803	1/4"	12
19804	1/4"	14
19800	1/2"	16
19801	1/2"	22
19802	3/4"	22

Tech Sheet 20000



### BSPP Male 60° Cone x NPT Female Extended

0014	Male Thread	Female Thread
16060	1/8"	1/8"
16061	1/4"	1/8"
16062	1/4"	1/4"
16073	1/4"	3/8"
16085	1/4"	1/2"
16072	3/8"	1/4"
16063	3/8"	3/8"
16065	1/2"	3/8"
16066	1/2"	1/2"
16082	1/2"	3/4"
16067	3/4"	3/4"
16083	1"	3/4"
16068	1"	1"
16084	1"	1.1/2"
16069	1.1/4"	1.1/4"
16075	1.1/2"	1.1/4"
16070	1.1/2"	1.1/2"
16071	2"	2"

Tech Sheet 20000



### NPT Male x BSPP Female Extended

0014	Male Thread	Female Thread
16170	1/8"	1/8"
16178	1/8"	1/4"
16171	1/4"	1/4"
16173	3/8"	3/8"
16172	1/2"	3/8"
16174	1/2"	1/2"
16175	3/4"	3/4"
16176	1"	1"
16169	1.1/4"	1.1/4"
16366	1.1/2"	1.1/4"

Tech Sheet 20000



### NPT Male x NPT Female Extended

0014	Male Thread	Female Thread
00820	1/8"	1/8"
00821	1/8"	1/4"
00822	1/4"	1/4"
00823	1/4"	3/8"
00843	1/4"	1"
00824	3/8"	3/8"
00842	3/8"	1/2"
00841	3/8"	3/4"
00826	1/2"	1/2"
00850	1/2"	3/4"
00829	3/4"	3/4"
00844	3/4"	1"
00849	3/4"	1.1/4"
00831	1"	1"
00825	1"	1.1/4"

Tech Sheet 20000

For Hydraulic Tube Clamps  
see pages 184-200





# HYDRAULIC ADAPTORS

## Bushes

### BSPP Male 60° Cone x BSPP Fixed Female Bush



0014	Male Thread	Female Thread
4B0602	3/8"	1/8"
4B0802	1/2"	1/8"
4B0804	1/2"	1/4"
4B1204	3/4"	1/4"
4B1206	3/4"	3/8"
4B1604	1"	1/4"
4B1606	1"	3/8"
4B1608	1"	1/2"
4B2008	1.1/4"	1/2"
4B2012	1.1/4"	3/4"
4B2016	1.1/4"	1"
4B2408	1.1/2"	1/2"
4B2412	1.1/2"	3/4"
4B2416	1.1/2"	1"
4B3216	2"	1"
4B3220	2"	1.1/4"
4B3224	2"	1.1/2"
4B4024	2.1/2"	1.1/2"
4B4032	2.1/2"	2"
4B4832	3"	2"

Tech Sheet 20000

### BSPP Male 60° Cone x NPT Fixed Female Bush



0014	Male Thread	Female Thread
4BN0802	1/2"	1/8"
4BN0804	1/2"	1/4"
4BN1206	3/4"	3/8"
4BN1604	1"	1/4"
4BN1608	1"	1/2"
4BN2016	1.1/4"	1"
4BN2416	1.1/2"	1"
4BN4032	2.1/2"	2"
4BN4832	3"	2"

Tech Sheet 20000

### BSPT Male x BSPP Female Bush



0014	Male Thread	Female Thread
16121	3/8"	1/8"
16122	3/8"	1/4"
16125	1/2"	1/4"
16123	3/4"	1/4"
16124	3/4"	3/8"
16137	3/4"	1/2"
16126	1"	1/4"
16117	1"	3/8"
16127	1"	1/2"
16128	1"	3/4"
16136	1.1/4"	1"
16142	1.1/2"	1/2"

Tech Sheet 20000

### BSPP Male x BSPP Female Bush (Not Coned)



0014	Male Thread	Female Thread
00780	3/8"	1/8"
00781	1/2"	1/8"
00782	1/2"	1/4"
00783	5/8"	1/4"
00784	5/8"	3/8"
00785	3/4"	1/8"
00786	3/4"	1/4"
00787	3/4"	3/8"
00788	1"	1/4"
00789	1"	3/8"
00790	1"	1/2"
00791	1"	5/8"
00792	1.1/4"	1/4"
00793	1.1/4"	3/8"
00794	1.1/4"	1/2"
00795	1.1/4"	3/4"
00796	1.1/4"	1"
00801	1.1/2"	3/4"
00802	1.1/2"	1"
00805	2"	1/2"
00806	2"	5/8"
00807	2"	3/4"
00808	2"	1"
00809	2"	1.1/4"
00810	2"	1.1/2"

Tech Sheet 20000

### BSPT Male x BSPT Female Bush



0014	Male Thread	Female Thread
16180	1/4"	1/8"
16181	3/8"	1/8"
16182	3/8"	1/4"
16183	1/2"	1/4"
16184	1/2"	3/8"
16186	3/4"	3/8"
16187	3/4"	1/2"
16190	1"	1/2"
16191	1"	3/4"

Tech Sheet 20000

### NPT Male x BSPP Female Bush



0014	Male Thread	Female Thread
16350	1/4"	1/8"
16351	3/8"	1/4"
16352	1/2"	1/4"
16354	3/4"	1/4"
16355	3/4"	3/8"
16356	3/4"	1/2"
16359	1"	1/2"
16360	1"	3/4"
16365	2"	1"

Tech Sheet 20000

### BSPP Male 60° Cone x BSPT Fixed Female Bush



0014	Male Thread	Female Thread
16601	1/2"	1/4"

Tech Sheet 20000

### NPT Male x NPT Female Bush



0014	Male Thread	Female Thread
01001	1/4"	1/8"
01002	3/8"	1/8"
01003	3/8"	1/4"
01018	1/2"	1/8"
01004	1/2"	1/4"
01005	1/2"	3/8"
01032	3/4"	1/8"
01006	3/4"	1/4"
01007	3/4"	3/8"
01008	3/4"	1/2"
01022	1"	1/4"
01011	1"	3/8"
01009	1"	1/2"
01010	1"	3/4"
01023	1.1/4"	1/4"
01025	1.1/4"	3/8"
01026	1.1/4"	1/2"
01019	1.1/4"	3/4"
01012	1.1/4"	1"
01024	1.1/2"	1/4"
01027	1.1/2"	3/8"
01028	1.1/2"	1/2"
01013	1.1/2"	3/4"
01015	1.1/2"	1"
01021	1.1/2"	1.1/4"
01031	2"	1/4"
01030	2"	1/2"
01029	2"	3/4"
01014	2"	1"
01017	2"	1.1/4"
01016	2"	1.1/2"
01033	2.1/2"	2"

Tech Sheet 20000

# HYDRAULIC ADAPTORS

## Gauge Adaptors

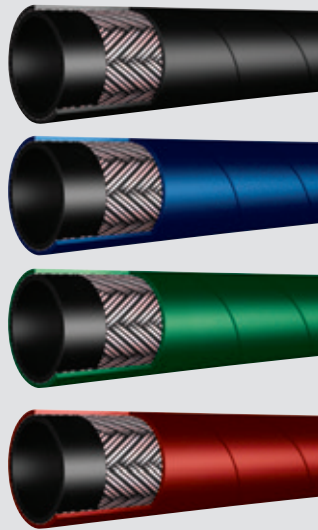


### BSPP Male 60° Cone x BSPP Fixed Female Gauge

0014	Male Thread	Female Thread
4BG02	1/8"	1/8"
4BG0204	1/8"	1/4"
4BG0206	1/8"	3/8"
4BG0402	1/4"	1/8"
4BG04	1/4"	1/4"
4BG0406	1/4"	3/8"
4BG0408	1/4"	1/2"
4BG0602	3/8"	1/8"
4BG0604	3/8"	1/4"
4BG06	3/8"	3/8"
4BG0608	3/8"	1/2"
4BG0804	1/2"	1/4"
4BG0806	1/2"	3/8"
4BG08	1/2"	1/2"
4BG0812	1/2"	3/4"
4BG0816	1/2"	1"
4BG1208	3/4"	1/2"
4BG1612	1"	3/4"

Tech Sheet 20000

**FT PRO**



For Push Style Hose System  
see pages 37-39

## Female Hose Inserts



### Female Swivel Straight BSPP

0014	Thread	To Suit Hose ID
09240	1/4"	1/4"
09241	3/8"	3/8"
09242	1/2"	1/2"
09243	5/8"	5/8"
09244	3/4"	3/4"
09245	1"	1"

Tech Sheet 20000



### Female Fixed Straight NPT

0014	Thread	To Suit Hose ID
16301	3/8"	3/8"
16302	1/2"	1/2"

Tech Sheet 20000



### BSPP Swivel Female 60° Cone x Hose Tail Straight

0014	Thread	To Suit Hose ID
93100	1/4"	1/4"
93101	3/8"	3/8"
93102	1/2"	1/2"
93103	5/8"	5/8"
93104	3/4"	3/4"
93105	1"	1"
93107	1.1/2"	1.1/2"
93108	2"	2"

Tech Sheet 20000

## Male Hose Inserts



### Male Straight BSPP 60° Cone

0014	Thread	To Suit Hose ID
09220	1/4"	1/4"
09221	3/8"	3/8"
09222	1/2"	1/2"
09223	3/4"	3/4"
09224	1"	1"

Tech Sheet 20000



### Male Straight BSPT

0014	Thread	To Suit Hose ID
09258	1/8"	1/4"
09250	1/4"	1/4"
09251	3/8"	3/8"
09252	3/8"	1/2"
09253	1/2"	1/2"
09254	3/4"	3/4"
09255	1"	1"

Tech Sheet 20000



### BSPP Male 60° Cone x Hose Tail Straight

0014	Thread	To Suit Hose ID
19920	1/4"	1/4"
19921	3/8"	3/8"
19922	1/2"	1/2"
19923	5/8"	5/8"
19924	3/4"	3/4"
19925	1"	1"
19927	1.1/4"	1.1/4"

Tech Sheet 20000



### BSPP Male 60° Cone x Hose Tail 90° Swept

0014	Thread	To Suit Hose ID
19930	1/4"	1/4"
19931	3/8"	3/8"
19932	1/2"	1/2"
19933	5/8"	5/8"
19934	3/4"	3/4"
19935	1"	1"

Tech Sheet 20000

# HYDRAULIC ADAPTORS

## Male/Female Swivel Adaptors



### BSPP Male 60° Cone x BSPP Swivel Female 60° Cone

0014	Male Thread	Female Thread
2B0202	1/8"	1/8"
2B0204	1/8"	1/4"
2B0206	1/8"	3/8"
2B0402	1/4"	1/8"
2B0404	1/4"	1/4"
2B0406	1/4"	3/8"
2B0408	1/4"	1/2"
2B0412	1/4"	3/4"
2B0602	3/8"	1/8"
2B0604	3/8"	1/4"
2B0606	3/8"	3/8"
2B0608	3/8"	1/2"
2B0610	3/8"	5/8"
2B0612	3/8"	3/4"
2B0616	3/8"	1"
2B0804	1/2"	1/4"
2B0806	1/2"	3/8"
2B0808	1/2"	1/2"
2B0810	1/2"	5/8"
2B0812	1/2"	3/4"
2B0816	1/2"	1"
2B1004	5/8"	1/4"
2B1006	5/8"	3/8"
2B1008	5/8"	1/2"
2B1010	5/8"	5/8"
2B1012	5/8"	3/4"
2B1204	3/4"	1/4"
2B1206	3/4"	3/8"
2B1208	3/4"	1/2"
2B1210	3/4"	5/8"
2B1212	3/4"	3/4"
2B1216	3/4"	1"
2B1220	3/4"	1.1/4"
2B1224	3/4"	1.1/2"
2B1606	1"	3/8"
2B1608	1"	1/2"
2B1612	1"	3/4"
2B1616	1"	1"
2B1620	1"	1.1/4"
2B1624	1"	1.1/2"
2B1632	1"	2"
2B2008	1.1/4"	1/2"
2B2012	1.1/4"	3/4"
2B2016	1.1/4"	1"
2B2020	1.1/4"	1.1/4"
2B2024	1.1/4"	1.1/2"
2B2416	1.1/2"	1"
2B2420	1.1/2"	1.1/4"
2B2424	1.1/2"	1.1/2"
2B2432	1.1/2"	2"
2B3224	2"	1.1/2"
2B3232	2"	2"

Tech Sheet 20000



### BSPP Male 60° Cone x SAE O-Ring Swivel Female

0014	Male Thread	Female Thread
96400	1/4"	9/16"
96410	1/4"	11/16"
96420	3/8"	9/16"
96430	3/8"	11/16"
96440	3/8"	13/16"
96450	1/2"	13/16"
96460	1/2"	1"
96470	3/4"	1.3/16"
96480	3/4"	1.7/16"
96490	1"	1.7/16"
96500	1.1/4"	1.11/16"

Tech Sheet 20000



### BSPP Male 60° Cone x Metric Swivel Female

0014	Male Thread	Female Thread
2BM0412	1/4"	M12 x 1.5
2BM0414	1/4"	M14 x 1.5
2BM0416	1/4"	M16 x 1.5
2BM0418	1/4"	M18 x 1.5
2BM0614	3/8"	M14 x 1.5
2BM0616	3/8"	M16 x 1.5
2BM0618	3/8"	M18 x 1.5
2BM0620	3/8"	M20 x 1.5
2BM0622	3/8"	M22 x 1.5
2BM0816	1/2"	M16 x 1.5
2BM0818	1/2"	M18 x 1.5
2BM0820	1/2"	M20 x 1.5
2BM0822	1/2"	M22 x 1.5
2BM0824	1/2"	M24 x 1.5
2BM0826	1/2"	M26 x 1.5
2BM1022	5/8"	M22 x 1.5
2BM1222	3/4"	M22 x 1.5

Tech Sheet 20000

### BSPP Male 60° Cone DIN 3852 Form A x BSPP Swivel Female 60° Cone



0014	Male Thread	Female Thread
61400	1/8"	1/8"
61402	1/8"	3/8"
61403	1/4"	1/8"
61404	1/4"	1/4"
61405	1/4"	3/8"
61406	1/4"	1/2"
61410	3/8"	3/8"
61411	3/8"	1/2"
61417	1/2"	1/2"
61419	1/2"	3/4"
61420	1/2"	1"
61429	3/4"	1/2"
61431	3/4"	3/4"
61432	3/4"	1"
61433	3/4"	1.1/4"
61434	1"	1/2"
61436	1"	3/4"
61437	1"	1"
61438	1"	1.1/4"
61439	1"	1.1/2"
61443	1.1/4"	1.1/4"
61444	1.1/4"	1.1/2"
61445	1.1/4"	2"
61448	1.1/2"	1.1/2"
61449	1.1/2"	2"

Tech Sheet 20000

### BSPP Male 60° Cone x NPSM Swivel Female



0014	Male Thread	Female Thread
31427	1/4"	1/4"
31429	1/4"	3/8"
31433	3/8"	1/4"
31434	3/8"	3/8"

Tech Sheet 20000

### BSPT Male x BSPP Swivel Female 60° Cone



0014	Male Thread	Female Thread
01875	1/8"	1/8"
01876	1/4"	1/4"
01877	3/8"	3/8"
01885	3/8"	1/2"
01884	1/2"	3/8"
01878	1/2"	1/2"
01879	5/8"	5/8"
01880	3/4"	1/2"
01881	3/4"	3/4"
01887	3/4"	1"
01882	1"	3/4"
01883	1"	1"
01889	1.1/4"	1.1/4"
01888	1.1/2"	1.1/2"
01886	2"	2"

Tech Sheet 20000

# HYDRAULIC ADAPTORS

## Male/Female Swivel Adaptors



### Metric Male x BSPP Swivel Female 60° Cone

0014	Male Thread	Female Thread
2MB1204	M12 x 1.5	1/4"
2MB1404	M14 x 1.5	1/4"
2MB1406	M14 x 1.5	3/8"
2MB1604	M16 x 1.5	1/4"
2MB1606	M16 x 1.5	3/8"
2MB1608	M16 x 1.5	1/2"
2MB1612	M16 x 1.5	3/4"
2MB1806	M18 x 1.5	3/8"
2MB1808	M18 x 1.5	1/2"
2MB2006	M20 x 1.5	3/8"
2MB2008	M20 x 1.5	1/2"
2MB2012	M20 x 1.5	3/4"
2MB2208	M22 x 1.5	1/2"
2MB2212	M22 x 1.5	3/4"
2MB2606	M26 x 1.5	3/8"
2MB3008	M30 x 1.5	1/2"

Tech Sheet 20000



### Metric Male x Metric Swivel Female

0014	Male Thread	Female Thread
2M1414	M14 x 1.5	M14 x 1.5
2M1616	M16 x 1.5	M16 x 1.5
2M1618	M16 x 1.5	M18 x 1.5
2M1818	M18 x 1.5	M18 x 1.5
2M2020	M20 x 1.5	M20 x 1.5
2M2022	M20 x 1.5	M22 x 1.5
2M2218	M22 x 1.5	M18 x 1.5
2M2220	M22 x 1.5	M20 x 1.5
2M2222	M22 x 1.5	M22 x 1.5

Tech Sheet 20000



### NPT Male x BSPP Swivel Female 60° Cone

0014	Male Thread	Female Thread
11875	1/8"	1/8"
11876	1/4"	1/4"
11885	3/8"	1/4"
11877	3/8"	3/8"
11884	3/8"	1/2"
11874	1/2"	3/8"
11878	1/2"	1/2"
11880	3/4"	1/2"
11881	3/4"	3/4"
11882	1"	3/4"
11883	1"	1"

Tech Sheet 20000

## Swivel Females



### BSPP Swivel Female x BSPP Swivel Female 60° Cone

0014	Thread	Thread
3B0202	1/8"	1/8"
3B0204	1/8"	1/4"
3B0206	1/8"	3/8"
3B0404	1/4"	1/4"
3B0406	1/4"	3/8"
3B0606	3/8"	3/8"
3B0612	3/8"	3/4"
3B0616	3/8"	1"
3B0804	1/2"	1/4"
3B0806	1/2"	3/8"
3B0808	1/2"	1/2"
3B0810	1/2"	5/8"
3B0812	1/2"	3/4"
3B1006	5/8"	3/8"
3B1010	5/8"	5/8"
3B1210	3/4"	5/8"
3B1212	3/4"	3/4"
3B1216	3/4"	1"
3B1608	1"	1/2"
3B1616	1"	1"
3B1620	1"	1.1/4"
3B1624	1"	1.1/2"
3B2012	1.1/4"	3/4"
3B2020	1.1/4"	1.1/4"
3B2424	1.1/2"	1.1/2"
3B2432	1.1/2"	2"
3B3232	2"	2"

Tech Sheet 20000



### BSPP Swivel Female 60° Cone x Metric Swivel Female

0014	Thread	Thread
3BM0412	1/4"	M12 x 1.5
3BM0414	1/4"	M14 x 1.5
3BM0612	3/8"	M12 x 1.5
3BM0614	3/8"	M14 x 1.5
3BM0616	3/8"	M16 x 1.5
3BM0618	3/8"	M18 x 1.5
3BM0620	3/8"	M20 x 1.5
3BM0622	3/8"	M22 x 1.5
3BM0816	1/2"	M16 x 1.5
3BM0818	1/2"	M18 x 1.5
3BM0822	1/2"	M22 x 1.5

Tech Sheet 20000

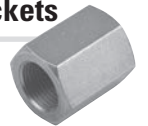
### Metric Swivel Female x Metric Swivel Female



0014	Thread	Thread
01775	M12 x 1.5	M12 x 1.5
01785	M12 x 1.5	M14 x 1.5
01776	M14 x 1.5	M14 x 1.5
01777	M16 x 1.5	M16 x 1.5
01782	M16 x 1.5	M18 x 1.5
01778	M18 x 1.5	M18 x 1.5
01783	M18 x 1.5	M20 x 1.5
01779	M18 x 1.5	M22 x 1.5
01780	M20 x 1.5	M20 x 1.5
01784	M20 x 1.5	M22 x 1.5
01781	M22 x 1.5	M22 x 1.5

Tech Sheet 20000

## Hexagon Female Sockets



### BSPP Fixed Female x BSPP Fixed Female

0014	Thread
7B02	1/8"
7B04	1/4"
7B06	3/8"
7B08	1/2"
7B10	5/8"
7B12	3/4"
7B16	1"
7B20	1.1/4"
7B24	1.1/2"
7B32	2"

Tech Sheet 20000

### BSPP Fixed Female x BSPP Fixed Female Reducing



0014	Thread	Thread
7B0204	1/8"	1/4"
7B0406	1/4"	3/8"
7B0408	1/4"	1/2"
7B0608	3/8"	1/2"
7B0812	1/2"	3/4"
7B0810	1/2"	5/8"
7B1216	3/4"	1"

Tech Sheet 20000

### NPT Fixed Female x NPT Fixed Female



0014	Thread
7N02	1/8"
7N04	1/4"
7N06	3/8"
7N08	1/2"
7N12	3/4"
7N16	1"
7N24	1.1/2"

Tech Sheet 20000

# HYDRAULIC ADAPTORS

## 90° Elbows



### BSPP Male x BSPP Male 90° Swept Elbow 60° Cone

0014	Thread
EBM04	1/4"
EBM06	3/8"
EBM08	1/2"
EBM10	5/8"
EBM12	3/4"
EBM16	1"
EBM32	2"

Tech Sheet 20000



### BSPP Male 60° Cone x BSPP Male 90° Positional Forged Elbow

0014	Thread
03051FDPOS	1/4"
03053FDPOS	3/8"
03054FDPOS	1/2"
03056FDPOS	3/4"
03057FDPOS	1"
03058FDPOS	1.1/4"

Tech Sheet 20000



### BSPP Male x BSPP Swivel Female 90° Swept Elbow 60° Cone

0014	Thread
EBMF04	1/4"
EBMF06	3/8"
EBMF08	1/2"
EBMF10	5/8"
EBMF12	3/4"
EBMF16	1"
EBMF20	1.1/4"
EBMF24	1.1/2"
EBMF32	2"

Tech Sheet 20000



### BSPP Swivel Female x BSPP Swivel Female 90° Swept Elbow 60° Cone

0014	Thread
EBF04	1/4"
EBF06	3/8"
EBF08	1/2"
EBF10	5/8"
EBF12	3/4"
EBF16	1"
EBF20	1.1/4"
EBF24	1.1/2"

Tech Sheet 20000



### BSPP Swivel Female 60° Cone x Hose Tail 90° Swept Elbow

0014	Thread	To Suit Hose ID
93000	1/4"	1/4"
93001	3/8"	3/8"
93002	1/2"	1/2"
93003	5/8"	5/8"
93004	3/4"	3/4"
93005	1"	1"
93006	1.1/4"	1.1/4"

Tech Sheet 20000



### Female Elbow 90° BSPP 60° Cone

0014	Thread	To Suit Hose ID
09280	1/4"	1/4"
09281	3/8"	3/8"
09282	1/2"	1/2"
09283	5/8"	5/8"
09284	3/4"	3/4"
09285	1"	1"

Tech Sheet 20000



### BSPP Swivel Female 60° Cone x Hose Tail 90° Compact

0014	Thread	To Suit Hose ID
80001	1/4"	1/4"
80002	3/8"	3/8"
80008	1/2"	3/8"
80003	1/2"	1/2"
80004	5/8"	5/8"
80005	3/4"	3/4"
80006	1"	1"

Tech Sheet 20000

## 90° Compact Elbows



### BSPP Male x BSPP Male 90° Compact Elbow 60° Cone

0014	Thread	Thread
XMB0404	1/4"	1/4"
XMB0406	1/4"	3/8"
XMB0606	3/8"	3/8"
XMB0608	3/8"	1/2"
XMB0808	1/2"	1/2"
XMB0812	1/2"	3/4"
XMB1212	3/4"	3/4"
XMB1616	1"	1"
XMB3232	2"	2"

Tech Sheet 20000



### BSPP Male x BSPP Male 90° Compact Elbow for Bonded Seal 60° Cone

0014	Thread	Thread
XMBS0202	1/8"	1/8"
XMBS0402	1/4"	1/8"
XMBS0404	1/4"	1/4"
XMBS0606	3/8"	3/8"
XMBS0808	1/2"	1/2"
XMBS1212	3/4"	3/4"
XMBS1612	1"	3/4"
XMBS1616	1"	1"
XMBS2020	1.1/4"	1.1/4"

Tech Sheet 20000



### BSPP Male 60° Cone x BSPT Male 90° Compact Elbow

0014	Thread	Thread
XMBP02T02	1/8"	1/8"
XMBP04T02	1/4"	1/8"
XMBP04T04	1/4"	1/4"
XMBP06T06	3/8"	3/8"
XMBP08T06	1/2"	3/8"
XMBP08T08	1/2"	1/2"
XMBP12T12	3/4"	3/4"
XMBP16T16	1"	1"

Tech Sheet 20000

Pressure ratings are not applicable to swept elbows or push-in fittings

# HYDRAULIC ADAPTORS

## 90° Compact Elbows



### BSPP Male 60° Cone x NPT Male 90° Compact Elbow

0014	Thread	Thread
XMB04N04	1/4"	1/4"
XMB06N06	3/8"	3/8"
XMB08N08	1/2"	1/2"

Tech Sheet 20000



### BSPP Male for Bonded Seal x BSPP Swivel Female 90° Compact Elbow 60° Cone

0014	Male Thread	Female Thread
XBMBF0202	1/8"	1/8"
XBMBF0404	1/4"	1/4"
XBMBF0606	3/8"	3/8"
XBMBF0604	3/8"	1/4"
XBMBF0806	1/2"	3/8"
XBMBF0808	1/2"	1/2"
XBMBF0812	1/2"	3/4"
XBMBF1010	5/8"	5/8"
XBMBF1212	3/4"	3/4"
XBMBF1616	1"	1"
XBMBF2020	1.1/4"	1.1/4"
XBMBF2424	1.1/2"	1.1/2"
XBMBF3232	2"	2"

Tech Sheet 20000



### BSPP Male for Cone Seal x BSPP Swivel Female 90° Compact Elbow 60° Cone

0014	Male Thread	Female Thread
XBMF0402	1/4"	1/8"
XBMF0404	1/4"	1/4"
XBMF0406	1/4"	3/8"
XBMF0604	3/8"	1/4"
XBMF0606	3/8"	3/8"
XBMF0608	3/8"	1/2"
XBMF0612	3/8"	3/4"
XBMF0806	1/2"	3/8"
XBMF0808	1/2"	1/2"
XBMF0812	1/2"	3/4"
XBMF0816	1/2"	1"
XBMF1212	3/4"	3/4"
XBMF1216	3/4"	1"
XBMF1612	1"	3/4"
XBMF1616	1"	1"
XBMF2424	1.1/2"	1.1/2"
XBMF3232	2"	2"

Tech Sheet 20000



### BSPP Female x BSPP Female 90° Compact Elbow

0014	Thread
15026	1/4"
15027	3/8"
15028	1/2"
15030	3/4"
15031	1"
15032	1.1/4"

Tech Sheet 20000



### BSPP Swivel Female x BSPP Swivel Female 90° Compact Elbow 60° Cone

0014	Thread	Thread
XBFO202	1/8"	1/8"
XBFO204	1/8"	1/4"
XBFO404	1/4"	1/4"
XBFO406	1/4"	3/8"
XBFO408	1/4"	1/2"
XBFO606	3/8"	3/8"
XBFO608	3/8"	1/2"
XBFO808	1/2"	1/2"
XBF1010	5/8"	5/8"
XBF1212	3/4"	3/4"
XBF1216	3/4"	1"
XBF1616	1"	1"
XBF2020	1.1/4"	1.1/4"
XBF2424	1.1/2"	1.1/2"
XBF3232	2"	2"

Tech Sheet 20000



### BSPP Swivel Female x BSPP Swivel Female 90° Forged Compact Elbow 60° Cone

0014	Thread
05026FD	1/4"
05027FD	3/8"
05028FD	1/2"
05030FD	3/4"
05031FD	1"

Tech Sheet 20000



### BSPP Male x BSPP Swivel Female 90° Forged Compact Elbow 60° Cone

0014	Thread
05000FD	1/4"
05001FD	3/8"
05002FD	1/2"
05004FD	3/4"
05005FD	1"
05018FD	1.1/4"
05007FD	1.1/2"

Tech Sheet 20000



### BSPT Male x BSPT Male 90° Compact Elbow

0014	Thread
83000	1/4"
83001	3/8"
83002	1/2"
83003	3/4"
83004	1"
83005	1.1/4"

Tech Sheet 20000



### BSPT Male x BSPP Swivel Female 90° Compact Elbow 60° Cone

0014	Male Thread	Female Thread
09410	1/8"	1/8"
09405	1/4"	1/4"
09406	3/8"	3/8"
09407	1/2"	1/2"
09411	3/4"	1/2"
09408	3/4"	3/4"
09409	1"	1"
09412	1.1/2"	1.1/2"

Tech Sheet 20000



### NPT Male x BSPP Swivel Female 90° Compact Elbow 60° Cone

0014	Male Thread	Female Thread
09397	1/8"	1/8"
09400	1/4"	1/4"
09401	3/8"	3/8"
09402	1/2"	1/2"
09403	3/4"	3/4"
09404	1"	1"
09398	1.1/4"	1.1/4"
09399	1.1/2"	1.1/2"

Tech Sheet 20000

# HYDRAULIC ADAPTORS

## 90° Compact Elbows



**NPT Male x NPT Male  
90° Compact Elbow**

0014	Thread	Thread
XMN04	1/4"	1/4"
XMN06	3/8"	3/8"
XMN08	1/2"	1/2"
XMN12	3/4"	3/4"
XMN16	1"	1"
XMN20	1.1/4"	1.1/4"
XMN24	1.1/2"	1.1/2"
XMN32	2"	2"

Tech Sheet 20000



**NPT Male x NPT  
Fixed Female  
90° Compact Elbow**

0014	Male Thread	Female Thread
XNMF0202	1/8"	1/8"
XNMF0404	1/4"	1/4"
XNMF0604	3/8"	1/4"
XNMF0606	3/8"	3/8"
XNMF0806	1/2"	3/8"
XNMF0808	1/2"	1/2"
XNMF1212	3/4"	3/4"
XNMF1616	1"	1"
XNMF2020	1.1/4"	1.1/4"
XNMF2424	1.1/2"	1.1/2"

Tech Sheet 20000



**NPT Fixed Female x  
NPT Fixed Female  
90° Compact Elbow**

0014	Thread	Thread
XFN0202	1/8"	1/8"
XFN0404	1/4"	1/4"
XFN0606	3/8"	3/8"
XFN0608	3/8"	1/2"
XFN0808	1/2"	1/2"
XFN1212	3/4"	3/4"
XFN1616	1"	1"
XFN2020	1.1/4"	1.1/4"
XFN2424	1.1/2"	1.1/2"
XFN3232	2"	2"

Tech Sheet 20000

## 45° Elbows



**BSPP Male x BSPP  
Male 45° Swept  
Elbow 60° Cone**

0014	Thread
SEBM04	1/4"
SEBM06	3/8"
SEBM08	1/2"
SEBM10	5/8"
SEBM24	1.1/2"

Tech Sheet 20000



**BSPP Male x BSPP  
Swivel Female  
45° Swept Elbow 60° Cone**

0014	Thread
SEBMF04	1/4"
SEBMF06	3/8"
SEBMF08	1/2"
SEBMF10	5/8"
SEBMF12	3/4"
SEBMF16	1"
SEBMF20	1.1/4"
SEBMF24	1.1/2"
SEBMF32	2"

Tech Sheet 20000



**BSPP Swivel  
Female x Hose Tail  
45° Swept 60° Cone**

0014	Thread	To Suit Hose ID
94505	1"	1"

Tech Sheet 20000



**BSPP Swivel Female x  
BSPP Swivel Female  
45° Swept Elbow 60° Cone**

0014	Thread
SEBF04	1/4"
SEBF06	3/8"
SEBF08	1/2"
SEBF10	5/8"
SEBF12	3/4"
SEBF16	1"
SEBF20	1.1/4"
SEBF24	1.1/2"
SEBF32	2"

Tech Sheet 20000



**BSPP Male x BSPP  
Male 45° Positional  
Forged Elbow**

0014	Thread
03051FDPOS-45	1/4"
03053FDPOS-45	3/8"
03054FDPOS-45	1/2"
03056FDPOS-45	3/4"
03057FDPOS-45	1"

Tech Sheet 20000



**Female Elbow 45°  
BSPP 60° Cone**

0014	Thread	To Suit Hose ID
19280	1/4"	1/4"
19281	3/8"	3/8"
19282	1/2"	1/2"
19283	5/8"	5/8"
19284	3/4"	3/4"
19285	1"	1"

Tech Sheet 20000

## 45° Compact Elbows



**BSPP Male x BSPP Swivel Female  
45° Forged Compact Elbow 60° Cone**

0014	Thread
05000/45FD	1/4"
05001/45FD	3/8"
05002/45FD	1/2"
05004/45FD	3/4"
05005/45FD	1"

Tech Sheet 20000

Pressure ratings are not applicable to swept elbows or push-in fittings

# HYDRAULIC ADAPTORS

## Tees



### BSPP Male x BSPP Male x BSPP Swivel Female Branch Tee 60° Cone

0014	Thread
ZMMFB02	1/8"
ZMMFB04	1/4"
ZMMFB06	3/8"
ZMMFB08	1/2"
ZMMFB12	3/4"
ZMMFB16	1"
ZMMFB20	1.1/4"

Tech Sheet 20000



### BSPP Male x BSPP Swivel Female x BSPP Male Branch Tee 60° Cone

0014	Thread
ZMFMB02	1/8"
ZMFMB04	1/4"
ZMFMB06	3/8"
ZMFMB08	1/2"
ZMFMB10	5/8"
ZMFMB12	3/4"
ZMFMB16	1"
ZMFMB20	1.1/4"

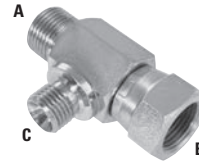
Tech Sheet 20000



### BSPP Male x BSPP Swivel Female x BSPP Swivel Female Branch Tee 60° Cone

0014	Thread
ZMFFB02	1/8"
ZMFFB04	1/4"
ZMFFB06	3/8"
ZMFFB08	1/2"
ZMFFB10	5/8"
ZMFFB12	3/4"
ZMFFB16	1"
ZMFFB20	1.1/4"

Tech Sheet 20000



### BSPP Male x BSPP Swivel Female x BSPP Male Branch Tee Reducing on Branch 60° Cone

0014	Thread A	Thread B	Thread C
02035	3/8"	3/8"	1/4"
02032	1/2"	1/2"	1/4"
02031	1/2"	1/2"	3/8"
02022	3/4"	3/4"	1/4"
02039	3/4"	3/4"	3/8"
02037	3/4"	3/4"	1/2"
02023	1"	1"	1/4"
02018	1"	1"	3/4"

Tech Sheet 20000



### BSPP Male x BSPP Swivel Female x BSPP Male Branch Tee Reducing on Run 60° Cone

0014	Thread A	Thread B	Thread C
02036	3/8"	1/2"	1/2"

Tech Sheet 20000



### BSPP Male x BSPP Swivel Female x BSPP Male Branch Tee Enlarging on Branch 60° Cone

0014	Thread A	Thread B	Thread C
02017	3/8"	3/8"	1/2"

Tech Sheet 20000



### BSPP Swivel Female x BSPP Swivel Female x BSPP Male Branch Tee 60° Cone

0014	Thread
ZFFMB04	1/4"
ZFFMB06	3/8"
ZFFMB08	1/2"
ZFFMB10	5/8"
ZFFMB12	3/4"
ZFFMB16	1"
ZFFMB20	1.1/4"

Tech Sheet 20000



### NPT Male x NPT Female x NPT Male Branch Tee

0014	Thread
08010	1/4"
08011	3/8"
08012	1/2"
08013	3/4"
08014	1"
08015	1.1/4"
08016	1.1/2"

Tech Sheet 20000



### NPT Male x NPT Female x NPT Female Branch Tee

0014	Thread
07059	1/8"
07060	1/4"
07061	3/8"
07062	1/2"
07063	3/4"
07064	1"
07065	1.1/4"
07066	1.1/2"

Tech Sheet 20000



### NPT Female x NPT Female x NPT Male Branch Tee

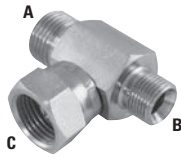
0014	Thread
07080	1/4"
07081	3/8"
07082	1/2"
07083	3/4"
07084	1"
07085	1.1/4"
07086	1.1/2"

Tech Sheet 20000



# HYDRAULIC ADAPTORS

## Tees



### BSPP Male x BSPP Male x BSPP Swivel Female Branch Unequal Tee 60° Cone

0014	Thread A	Thread B	Thread C
01998	3/8"	1/2"	1/2"
02014	1/4"	1/2"	1/2"
01999	1/2"	3/4"	3/4"
02013	1/2"	3/4"	1"

Tech Sheet 20000



### BSPP Male Tee 60° Cone Seating Enlarging on Branch

0014	Thread A	Thread B
01913	3/8"	1/2"

Tech Sheet 20000



### NPT Male Tee

0014	Thread
ZMN02	1/8"
ZMN04	1/4"
ZMN06	3/8"
ZMN08	1/2"

Tech Sheet 20000



### BSPP Swivel Female Tee 60° Cone

0014	Thread
ZFB02	1/8"
ZFB04	1/4"
ZFB06	3/8"
ZFB08	1/2"
ZFB10	5/8"
ZFB12	3/4"
ZFB16	1"
ZFB20	1.1/4"
ZFB24	1.1/2"
ZFB32	2"

Tech Sheet 20000



### BSPP Female Tee

0014	Thread
11975	1/8"
11976	1/4"
11977	3/8"
11978	1/2"
11979	5/8"
11980	3/4"
11981	1"
11982	1.1/4"
11985	1.1/2"
11984	2"

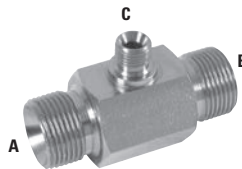
Tech Sheet 20000



### NPTF Female Tee

0014	Thread
07000	1/8"
07001	1/4"
07002	3/8"
07003	1/2"
07004	3/4"
07005	1"
07006	1.1/4"
07007	1.1/2"
07008	2"

Tech Sheet 20000



### BSPP Male Tee Reducing on Branch 60° Cone

0014	Thread A	Thread B	Thread C
RZMB0402BS	1/4"	1/4"	1/8"
RZMB0604BS	3/8"	3/8"	1/4"
RZMB0804BS	1/2"	1/2"	1/4"
RZMB1008BS	5/8"	5/8"	1/2"
RZMB1204BS	3/4"	3/4"	1/4"
RZMB1208BS	3/4"	3/4"	1/2"
RZMB1612BS	1"	1"	3/4"
RZMB2012BS	1.1/4"	1.1/4"	3/4"
RZMB2016BS	1.1/4"	1.1/4"	1"

Tech Sheet 20000



### BSPP Male Tee for Bonded Seal 60° Cone

0014	Thread
ZMB02BS	1/8"
ZMB04BS	1/4"
ZMB06BS	3/8"
ZMB08BS	1/2"
ZMB10BS	5/8"
ZMB12BS	3/4"
ZMB16BS	1"
ZMB24BS	1.1/4"

Tech Sheet 20000



### BSPP Male Tee 60° Cone Seating

0014	Thread
ZMB04	1/4"
ZMB06	3/8"
ZMB08	1/2"
ZMB12	3/4"
ZMB16	1"
ZMB24	1.1/2"
ZMB32	2"

Tech Sheet 20000

# HYDRAULIC ADAPTORS

## Bulkheads



**BSPP Male x BSPP Male Bulkhead complete with Locknut 60° Cone**

0014	Thread A	Thread B
09500	1/8"	1/8"
09501	1/4"	1/4"
09512	1/4"	3/8"
09513	3/8"	1/4"
09502	3/8"	3/8"
09505	3/8"	1/2"
09511	1/2"	3/8"
09503	1/2"	1/2"
09514	1/2"	3/4"
09504	5/8"	5/8"
09515	3/4"	1/2"
09506	3/4"	3/4"
09507	1"	1"
09508	1.1/4"	1.1/4"
09521	1.1/2"	1"
09509	1.1/2"	1.1/2"
09510	2"	2"
09516	2.1/2"	2.1/2"
09517	3"	3"

Tech Sheet 20000



**BSPP Male x BSPP Male Extended Bulkhead 60° Cone complete with Locknut**

0014	Thread A	Thread B
8BPX0404	1/4"	1/4"
8BPX0606	3/8"	3/8"
8BPX0608	3/8"	1/2"
8BPX0806	1/2"	3/8"
8BPX0808	1/2"	1/2"
8BPX1010	5/8"	5/8"
8BPX1208	3/4"	1/2"
8BPX1212	3/4"	3/4"
8BPX1616	1"	1"

Tech Sheet 20000



For Hydraulic Seals  
see pages 109-112



**BSPP Male x BSPP Male Bulkhead 60° Cone No Locknut**

0014	Thread A	Thread B
8BP0202	1/8"	1/8"
8BP0404	1/4"	1/4"
8BP0606	3/8"	3/8"
8BP0808	1/2"	1/2"
8BP1010	5/8"	5/8"
8BP1212	3/4"	3/4"
8BP1616	1"	1"
8BP2020	1.1/4"	1.1/4"
8BP2424	1.1/2"	1.1/2"
8BP3232	2"	2"
8BP0406	1/4"	3/8"
8BP0604	3/8"	1/4"
8BP0608	3/8"	1/2"
8BP0806	1/2"	3/8"
8BP0812	1/2"	3/4"
8BP1208	3/4"	1/2"

Tech Sheet 20000



**Metric Male x Metric Male Bulkhead No Locknut**

0014	Thread	Thread
8MP1212	M12 x 1.5	M12 x 1.5
8MP1414	M14 x 1.5	M14 x 1.5
8MP1616	M16 x 1.5	M16 x 1.5
8MP1818	M18 x 1.5	M18 x 1.5
8MP2020	M20 x 1.5	M20 x 1.5
8MP2222	M22 x 1.5	M22 x 1.5
8MP2424	M24 x 1.5	M24 x 1.5

Tech Sheet 20000

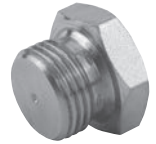


**Metric Male x Metric Male Bulkhead complete with Locknut**

0014	Thread
09550	M12 x 1.5
09551	M14 x 1.5
09552	M16 x 1.5
09553	M18 x 1.5
09554	M20 x 1.5
09555	M22 x 1.5
09556	M24 x 1.5

Tech Sheet 20000

## Plugs



**BSPP Solid Plug**

0014	Thread
6BS02	1/8"
6BS04	1/4"
6BS06	3/8"
6BS08	1/2"
6BS10	5/8"
6BS12	3/4"
6BS16	1"
6BS20	1.1/4"
6BS24	1.1/2"
6BS32	2"

Tech Sheet 20000



**BSPP 60° Coned Plug**

0014	Thread
6BC02	1/8"
6BC04	1/4"
6BC06	3/8"
6BC08	1/2"
6BC10	5/8"
6BC12	3/4"
6BC16	1"
6BC20	1.1/4"
6BC24	1.1/2"
6BC32	2"
6BC40	2.1/2"

Tech Sheet 20000



**BSPP 60° Coned Plug to DIN 3852 Form A**

0014	Thread
69001	1/4"
69002	3/8"
69003	1/2"
69005	3/4"
69006	1"
69009	2"

Tech Sheet 20000

# HYDRAULIC ADAPTORS

## Plugs



### BSPP Socket Headed Plug for Bonded Seal

0014	Thread
09025-02-SPG	1/8"
09026-04-SPG	1/4"
09027-06-SPG	3/8"
09028-08-SPG	1/2"
09030-12-SPG	3/4"

Tech Sheet 20000



### BSPP Socket Headed Plug with 3869 Seal

0014	Thread
3869-02-SPG	1/8"
3869-04-SPG	1/4"
3869-06-SPG	3/8"
3869-08-SPG	1/2"
3869-12-SPG	3/4"

Tech Sheet 20000



### BSPT Solid Plug

0014	Thread
6BT02	1/8"
6BT04	1/4"
6BT06	3/8"
6BT08	1/2"
6BT10	5/8"
6BT12	3/4"
6BT16	1"
6BT24	1.1/2"
6BT32	2"

Tech Sheet 20000



### Metric Solid Plug 1mm Pitch

0014	Thread
09169	M8 x 1
09179	M10 x 1
09168	M12 x 1

Tech Sheet 20000



### Metric Solid Plug 1.5mm Pitch

0014	Thread
6M10	M10 x 1.5
6M12	M12 x 1.5
6M14	M14 x 1.5
6M16	M16 x 1.5
6M18	M18 x 1.5
6M20	M20 x 1.5
6M22	M22 x 1.5
6M24	M24 x 1.5
6M26	M26 x 1.5

Tech Sheet 20000



### Metric Socket Headed Plug for Bonded Seal

0014	Thread
09179-M10-SPG	M10 x 1
09173-M14-SPG	M14 x 1.5
09170-M16-SPG	M16 x 1.5
09176-M22-SPG	M22 x 1.5

Tech Sheet 20000



### Metric Socket Headed Plug with 3869 Seal

0014	Thread
3869-M10-SPG	M10 x 1
3869-M14-SPG	M14 x 1.5
3869-M16-SPG	M16 x 1.5
3869-M22-SPG	M22 x 1.5
3869-M26-SPG	M26 x 1.5

Tech Sheet 20000



### NPT Socket Headed Plug

0014	Thread
09100/HD	1/8"
09101/HD	1/4"
09102/HD	3/8"
09103/HD	1/2"
09105/HD	3/4"
09106/HD	1"

Tech Sheet 20000



### NPT Solid Plug

0014	Thread
6N02	1/8"
6N04	1/4"
6N06	3/8"
6N08	1/2"
6N12	3/4"
6N16	1"
6N20	1.1/4"
6N24	1.1/2"
6N32	2"
6N40	2.1/2"
6N48	3"

Tech Sheet 20000



### SAE Boss Socket Head Male Plug with O-Ring

0014	Thread
7238-04	7/16"
7238-05	1/2"
7238-06	9/16"
7238-08	3/4"
7238-10	7/8"
7238-12	1.1/16"
7238-14	1.3/16"
7238-16	1.5/16"

Tech Sheet 20000

# HYDRAULIC ADAPTORS

## Plugs



### SAE O-Ring Boss Male Solid Plug with O-Ring

0014	Thread
19162	5/16"
19150	7/16"
19151	1/2"
19152	9/16"
19153	3/4"
19154	7/8"
19155	1.1/16"
19156	1.3/16"
19157	1.5/16"
19158	1.5/8"
19159	1.7/8"
19160	2.1/2"

Tech Sheet 20000



### SAE O-Ring Face Plug with O-Ring

0014	Thread
96000	9/16"
96001	11/16"
96002	13/16"
96003	1"
96004	1.3/16"
96005	1.7/16"

Tech Sheet 20000



### JIS Solid Plug 30° Cone (BSPP Threads)

0014	Thread
7681-04	1/4"
7681-06	3/8"
7681-08	1/2"
7681-12	3/4"

Tech Sheet 20000



### JIS Solid Plug 30° Cone (Metric Threads)

0014	Thread
9711-14	M14 x 1.5
9711-18	M18 x 1.5
9711-22	M22 x 1.5
9711-24	M24 x 1.5
9711-30	M30 x 1.5

Tech Sheet 20000

## Crosses



### BSPP Male Cross 60° Cone for Bonded Seal

0014	Thread
03007	1/8"
03000	1/4"
03001	3/8"
03002	1/2"
03003	5/8"
03004	3/4"
03005	1"
03006	1.1/4"

Tech Sheet 20000



### BSPP Female Cross

0014	Thread
13023	1/8"
13020	1/4"
13021	3/8"
13022	1/2"
13024	3/4"
13025	1"
13026	1.1/4"

Tech Sheet 20000



### BSPP Swivel Female Cross 60° Cone

0014	Thread
Z4MB02	1/8"
Z4MB04	1/4"
Z4MB06	3/8"
Z4MB08	1/2"
Z4MB10	5/8"
Z4MB12	3/4"
Z4MB16	1"
Z4MB20	1.1/4"
Z4MB24	1.1/2"

Tech Sheet 20000



### NPT Female Cross

0014	Thread
37000	1/4"
37001	3/8"
37002	1/2"
37004	1"
37006	1.1/2"

Tech Sheet 20000

## Ferrules

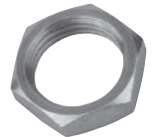


### R2AT Non-skive Ferrule

0014	ID
19951	3/8"
19953	5/8"
19955	1"

Tech Sheet 20000

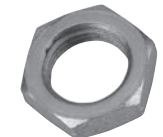
## Locknuts



### BSPP Locknut

0014	Thread
BLN02	1/8"
BLN04	1/4"
BLN06	3/8"
BLN08	1/2"
BLN10	5/8"
BLN12	3/4"
BLN16	1"
BLN20	1.1/4"
BLN24	1.1/2"
BLN32	2"

Tech Sheet 20000



### Metric Locknut

0014	Thread
MLN12	M12 x 1.5
MLN14	M14 x 1.5
MLN16	M16 x 1.5
MLN18	M18 x 1.5
MLN20	M20 x 1.5
MLN22	M22 x 1.5
MLN24	M24 x 1.5

Tech Sheet 20000

# HYDRAULIC ADAPTORS

## Blanking Caps



### BSPP Swivel 60° Coned Blanking Cap

0014	Thread
7BSBC02	1/8"
7BSBC04	1/4"
7BSBC06	3/8"
7BSBC08	1/2"
7BSBC10	5/8"
7BSBC12	3/4"
7BSBC16	1"
7BSBC20	1.1/4"
7BSBC24	1.1/2"
7BSBC32	2"

Tech Sheet 20000



### Metric Swivel Blanking Cap

0014	Thread
7M12	M12 x 1.5
7M14	M14 x 1.5
7M16	M16 x 1.5
7M18	M18 x 1.5
7M20	M20 x 1.5
7M22	M22 x 1.5

Tech Sheet 20000



### JIS Female Cap (BSPP Threads)

0014	Thread
7691-04	1/4"
7691-06	3/8"
7691-08	1/2"
7691-12	3/4"

Tech Sheet 20000



### JIS Female Cap (Metric Threads)

0014	Thread
9721-14	M14 x 1.5
9721-18	M18 x 1.5
9721-22	M22 x 1.5
9721-24	M24 x 1.5
9721-30	M30 x 1.5

Tech Sheet 20000

## Crimp Nuts



### BSPP Crimp Nut

0014	Thread
708021	1/4"
708023	1/2"
708024	5/8"
708025	3/4"
708026	1"
708027	1.1/4"
708028	1.1/2"
708029	2"

Tech Sheet 20000



### Metric Crimp Nut

0014	Thread
708049	M10 x 1.5
708050	M12 x 1.5
708051	M14 x 1.5
708053	M18 x 1.5

Tech Sheet 20000



### NPSM Crimp Nut

0014	Thread
18004	1/8"
18000	1/4"
18001	3/8"
18002	1/2"
18003	3/4"
18005	1"
18007	1.1/4"
18008	1.1/2"
18009	2"

Tech Sheet 20000

## Test Point Adaptors



### BSPP Male x Swivel Female, 1/8" BSP Test Point

0014	Thread
01425-TP-B02	1/8"
01427-TP-B02	1/4"
01434-TP-B02	3/8"
01440-TP-B02	1/2"
01451-TP-B02	3/4"
01458-TP-B02	1"

Tech Sheet 20000



### 1/8" BSPP Male, M16x2 Test Point Fitting

0014	Thread
MTP/B02-M16/2S	1/8"

Tech Sheet 20000



For Threaded  
Hydraulic Valves  
see pages 244-246

# JIC HYDRAULIC ADAPTORS

## Male/Male Adaptors



**NPTF Male x JIC Male  
37° Cone**

0014	Thread	Thread
1NJ0207	1/8"	7/16"
1NJ0208	1/8"	1/2"
1NJ0209	1/8"	9/16"
1NJ0407	1/4"	7/16"
1NJ0408	1/4"	1/2"
1NJ0409	1/4"	9/16"
1NJ0412	1/4"	3/4"
1NJ0414	1/4"	7/8"
1NJ0607	3/8"	7/16"
1NJ0608	3/8"	1/2"
1NJ0609	3/8"	9/16"
1NJ0612	3/8"	3/4"
1NJ0614	3/8"	7/8"
1NJ0807	1/2"	7/16"
1NJ0809	1/2"	9/16"
1NJ0812	1/2"	3/4"
1NJ0814	1/2"	7/8"
1NJ0817	1/2"	1.1/16"
1NJ0821	1/2"	1.5/16"
1NJ1207	3/4"	7/16"
1NJ1209	3/4"	9/16"
1NJ1214	3/4"	7/8"
1NJ1217	3/4"	1.1/16"
1NJ1226	3/4"	1.5/8"
1NJ1612	1"	3/4"
1NJ1614	1"	7/8"
1NJ1621	1"	1.5/16"
1NJ1626	1"	1.5/8"
1NJ1630	1"	1.7/8"
1NJ2017	1.1/4"	1.1/16"
1NJ2021	1.1/4"	1.5/16"
1NJ2030	1.1/4"	1.7/8"
1NJ2040	1.1/4"	2.1/2"
1NJ2417	1.1/2"	1.1/16"
1NJ2421	1.1/2"	1.5/16"
1NJ2426	1.1/2"	1.5/8"
1NJ2430	1.1/2"	1.7/8"
1NJ2440	1.1/2"	2.1/2"
1NJ3226	2"	1.5/8"
1NJ3230	2"	1.7/8"
1NJ3240	2"	2.1/2"

Tech Sheet 20000



**BSPP Male x JIC Male  
37° Cone Restrictor Blank Only**

0014	Thread	Thread
13230	1/4"	9/16"
13231	3/8"	7/16"
13232	3/8"	9/16"
13233	1/2"	9/16"

Tech Sheet 20000



**BSPT Male x  
JIC Male 37° Cone**

0014	Thread	Thread
1BTJ0207	1/8"	7/16"
1BTJ0208	1/8"	1/2"
1BTJ0209	1/8"	9/16"
1BTJ0407	1/4"	7/16"
1BTJ0408	1/4"	1/2"
1BTJ0409	1/4"	9/16"
1BTJ0412	1/4"	3/4"
1BTJ0607	3/8"	7/16"
1BTJ0608	3/8"	1/2"
1BTJ0609	3/8"	9/16"
1BTJ0612	3/8"	3/4"
1BTJ0809	1/2"	9/16"
1BTJ0812	1/2"	3/4"
1BTJ0814	1/2"	7/8"
1BTJ0817	1/2"	1.1/16"
1BTJ1212	3/4"	3/4"
1BTJ1214	3/4"	7/8"
1BTJ1217	3/4"	1.1/16"
1BTJ1219	3/4"	1.3/16"
1BTJ1221	3/4"	1.5/16"
1BTJ1612	1"	3/4"
1BTJ1617	1"	1.1/16"
1BTJ1621	1"	1.5/16"
1BTJ1626	1"	1.5/8"
1BTJ2021	1.1/4"	1.5/16"
1BTJ2026	1.1/4"	1.5/8"
1BTJ2426	1.1/2"	1.5/8"
1BTJ2430	1.1/2"	1.7/8"
1BTJ3230	2"	1.7/8"
1BTJ3240	2"	2.1/2"

Tech Sheet 20000



**JIC Male x JIC Male  
37° Cone**

0014	Thread	Thread
1JP0505	5/16"	5/16"
1JP0507	5/16"	7/16"
1JP0707	7/16"	7/16"
1JP0709	7/16"	9/16"
1JP0807	1/2"	7/16"
1JP0808	1/2"	1/2"
1JP0809	1/2"	9/16"
1JP0812	1/2"	3/4"
1JP0814	1/2"	7/8"
1JP0909	9/16"	9/16"
1JP0914	9/16"	7/8"
1JP0917	9/16"	1.1/16"
1JP0919	9/16"	1.3/16"
1JP1207	3/4"	7/16"
1JP1209	3/4"	9/16"
1JP1212	3/4"	3/4"
1JP1214	3/4"	7/8"
1JP1414	7/8"	7/8"
1JP1417	7/8"	1.1/16"
1JP1421	7/8"	1.5/16"
1JP1717	1.1/16"	1.1/16"
1JP1721	1.1/16"	1.5/16"
1JP1919	1.3/16"	1.3/16"
1JP2121	1.5/16"	1.5/16"
1JP2126	1.5/16"	1.5/8"
1JP2130	1.5/16"	1.7/8"
1JP2626	1.5/8"	1.5/8"
1JP3030	1.7/8"	1.7/8"
1JP4040	2.1/2"	2.1/2"

Tech Sheet 20000



**JIC Male 37° Cone  
x JIS Male 30° Cone (BSPP Threads)**

0014	Thread	Thread
6811-04-04	7/16"	1/4"
6811-06-06	9/16"	3/8"
6811-08-08	3/4"	1/2"

Tech Sheet 20000



**JIC Male 37° Cone  
x JIS Male 30° Cone (Metric Threads)**

0014	Thread	Thread
8751-04-14	7/16"	M14 x 1.5
8751-06-18	9/16"	M18 x 1.5
8751-08-22	3/4"	M22 x 1.5
8751-10-24	7/8"	M24 x 1.5
8751-12-30	1.1/16"	M30 x 1.5
8751-16-33	1.5/16"	M33 x 1.5

Tech Sheet 20000

# JIC HYDRAULIC ADAPTORS

## Male/Male Adaptors



### Metric Male x JIC Male 37° Cone

0014	Thread	Thread
01265	M10 x 1.5	7/16"
01274	M12 x 1.5	7/16"
01284	M12 x 1.5	9/16"
01286	M12 x 1.5	3/4"
01268	M14 x 1.5	3/8"
01291	M14 x 1.5	7/16"
01287	M14 x 1.5	9/16"
01288	M14 x 1.5	3/4"
01272	M14 x 1.5	7/8"
01295	M16 x 1.5	7/16"
01280	M16 x 1.5	9/16"
01275	M16 x 1.5	3/4"
01289	M16 x 1.5	7/8"
01299	M18 x 1.5	7/16"
01276	M18 x 1.5	9/16"
01281	M18 x 1.5	3/4"
01283	M18 x 1.5	7/8"
01298	M18 x 1.5	1.1/16"
01282	M20 x 1.5	9/16"
01277	M20 x 1.5	3/4"
01290	M20 x 1.5	7/8"
01270	M20 x 1.5	1.1/16"
01285	M22 x 1.5	9/16"
01278	M22 x 1.5	3/4"
01279	M22 x 1.5	7/8"
01294	M22 x 1.5	1.1/16"
01267	M24 x 1.5	1.1/16"
01297	M26 x 1.5	7/8"
01292	M26 x 1.5	1.1/16"

Tech Sheet 20000



### BSPP Male 60° Cone x JIC 37° Cone Male

0014	Thread	Thread
1BJP0207	1/8"	7/16"
1BJP0208	1/8"	1/2"
1BJP0209	1/8"	9/16"
1BJP0407	1/4"	7/16"
1BJP0408	1/4"	1/2"
1BJP0409	1/4"	9/16"
1BJP0412	1/4"	3/4"
1BJP0414	1/4"	7/8"
1BJP0417	1/4"	1.1/16"
1BJP0421	1/4"	1.5/16"
1BJP0607	3/8"	7/16"
1BJP0608	3/8"	1/2"
1BJP0609	3/8"	9/16"
1BJP0612	3/8"	3/4"
1BJP0614	3/8"	7/8"
1BJP0617	3/8"	1.1/16"
1BJP0621	3/8"	1.5/16"
1BJP0807	1/2"	7/16"
1BJP0808	1/2"	1/2"
1BJP0809	1/2"	9/16"
1BJP0812	1/2"	3/4"
1BJP0814	1/2"	7/8"
1BJP0817	1/2"	1.1/16"
1BJP0821	1/2"	1.5/16"
1BJP1009	5/8"	9/16"
1BJP1012	5/8"	3/4"
1BJP1014	5/8"	7/8"
1BJP1017	5/8"	1.1/16"
1BJP1019	5/8"	1.3/16"
1BJP1021	5/8"	1.5/16"
1BJP1207	3/4"	7/16"
1BJP1208	3/4"	1/2"
1BJP1209	3/4"	9/16"
1BJP1212	3/4"	3/4"
1BJP1214	3/4"	7/8"
1BJP1217	3/4"	1.1/16"
1BJP1219	3/4"	1.3/16"
1BJP1221	3/4"	1.5/16"
1BJP1226	3/4"	1.5/8"
1BJP1230	3/4"	1.7/8"
1BJP1612	1"	3/4"
1BJP1614	1"	7/8"
1BJP1617	1"	1.1/16"
1BJP1619	1"	1.3/16"
1BJP1621	1"	1.5/16"
1BJP1626	1"	1.5/8"
1BJP1630	1"	1.7/8"
1BJP2017	1.1/4"	1.1/16"
1BJP2021	1.1/4"	1.5/16"
1BJP2026	1.1/4"	1.5/8"
1BJP2030	1.1/4"	1.7/8"
1BJP2040	1.1/4"	2.1/2"
1BJP2421	1.1/2"	1.5/16"
1BJP2426	1.1/2"	1.5/8"
1BJP2430	1.1/2"	1.7/8"
1BJP2440	1.1/2"	2.1/2"
1BJP3230	2"	1.7/8"
1BJP3240	2"	2.1/2"

Tech Sheet 20000



### Metric Male 24° Cone x JIC Male 37° Cone

0014	To Fit Tube Size mm	Thread	Thread
01-06L04J	6	M12 x 1.5	7/16"
01-06S04J	6	M14 x 1.5	7/16"
01-08L04J	8	M14 x 1.5	7/16"
01-08S04J	8	M16 x 1.5	7/16"
01-10L06J	8	M16 x 1.5	9/16"
01-08S08J	10	M16 x 1.5	9/16"
41275-10	10	M16 x 1.5	3/4"
01-10S06J	10	M18 x 1.5	9/16"
01-12L06J	12	M18 x 1.5	9/16"
01-10S08J	10	M18 x 1.5	3/4"
01-12L08J	12	M18 x 1.5	3/4"
01-12S08J	12	M20 x 1.5	3/4"
01-14S08J	14	M20 x 1.5	3/4"
01-15L08J	15	M22 x 1.5	3/4"
01-15L12J	15	M22 x 1.5	1.1/16"
41270-20	20	M30 x 1.5	1.1/16"
41270-22	22	M30 x 1.5	1.1/16"
41262-28	28	M36 x 1.5	1.1/16"
01-35LX216J	35	M45 x 1.5	1.5/16"

Tech Sheet 20000

# JIC HYDRAULIC ADAPTORS

## Male/Male Adaptors



### SAE Boss Male x JIC Male 37° Coneless O-Ring

0014	Thread	Thread
01350	7/16"	7/16"
01353	7/16"	1/2"
01351	7/16"	9/16"
01392	1/2"	7/16"
01352	1/2"	1/2"
01388	1/2"	9/16"
01354	9/16"	7/16"
01355	9/16"	1/2"
01356	9/16"	9/16"
01357	9/16"	3/4"
01358	9/16"	7/8"
01389	3/4"	7/16"
01361	3/4"	9/16"
01362	3/4"	3/4"
01363	3/4"	7/8"
01364	3/4"	1.1/16"
01386	7/8"	9/16"
01365	7/8"	3/4"
01366	7/8"	7/8"
01367	7/8"	1.1/16"
01395	1.1/16"	9/16"
01368	1.1/16"	3/4"
01370	1.1/16"	7/8"
01371	1.1/16"	1.1/16"
01373	1.1/16"	1.5/16"
01391	1.3/16"	1.3/16"
01394	1.5/16"	3/4"
01396	1.5/16"	7/8"
01377	1.5/16"	1.1/16"
01378	1.5/16"	1.5/16"
01379	1.5/16"	1.5/8"
01380	1.5/8"	1.5/16"
01381	1.5/8"	1.5/8"
01387	1.5/8"	1.7/8"
01397	1.7/8"	1.5/16"
01383	1.7/8"	1.5/8"
01384	1.7/8"	1.7/8"
01369	1.7/8"	2.1/2"
01385	2.1/2"	2.1/2"

Tech Sheet 20000



### Metric Male 24° Cone x JIC Male 37° Cone

0014	To Fit Tube Size mm	Thread	Thread
01-22LX212J	22	M30 x 2	1.1/16"
01-25SX212J	25	M36 x 2	1.1/16"
01-30SX220J	30	M42 x 2	1.5/8"
01-35LX216J	35	M45 x 2	1.5/16"
01-38SX220J	38	M52 x 2	1.5/8"

Tech Sheet 20000

## Male/Female Fixed Adaptors



### JIC Male 37° Cone x BSPP Female Extended

0014	Male Thread	Female Thread
17004	7/16"	1/8"
17001	7/16"	1/4"

Tech Sheet 20000



### JIC Male x 37° Cone NPT Female Extended

0014	Male Thread	Female Thread
16261	7/16"	1/8"
16250	7/16"	1/4"
16249	7/16"	3/8"
16251	9/16"	1/4"
16257	9/16"	3/8"
16258	9/16"	1/2"
16256	3/4"	3/8"
16252	3/4"	1/2"
16253	7/8"	1/2"
16254	1.1/16"	3/4"
16255	1.5/16"	1"

Tech Sheet 20000



### JIC Male 37° Cone x JIS Female Extended 60° Internal Seat (Metric Threads)

0014	Male Thread	Female Thread
8701-04-14	7/16"	M14 x 1.5
8701-06-18	9/16"	M18 x 1.5
8701-08-22	3/4"	M22 x 1.5
8701-12-30	1.1/16"	M30 x 1.5
8701-16-33	1.5/16"	M33 x 1.5

Tech Sheet 20000

## Male/Female Swivel Adaptors



### NPT Male x JIC Swivel Female 37° Cone

0014	Male Thread	Female Thread
11201	1/4"	9/16"
11202	3/8"	3/4"
11203	1/2"	7/8"
11204	3/4"	1.1/16"
11205	1"	1.5/16"

Tech Sheet 20000



### BSPP Male 60° Cone x JIC Swivel Female 37° Cone

0014	Male Thread	Female Thread
2BJ0207	1/8"	7/16"
2BJ0407	1/4"	7/16"
2BJ0408	1/4"	1/2"
2BJ0409	1/4"	9/16"
2BJ0412	1/4"	3/4"
2BJ0607	3/8"	7/16"
2BJ0608	3/8"	1/2"
2BJ0609	3/8"	9/16"
2BJ0612	3/8"	3/4"
2BJ0614	3/8"	7/8"
2BJ0807	1/2"	7/16"
2BJ0808	1/2"	1/2"
2BJ0809	1/2"	9/16"
2BJ0812	1/2"	3/4"
2BJ0814	1/2"	7/8"
2BJ0817	1/2"	1.1/16"
2BJ1012	5/8"	3/4"
2BJ1014	5/8"	7/8"
2BJ1017	5/8"	1.1/16"
2BJ1212	3/4"	3/4"
2BJ1214	3/4"	7/8"
2BJ1217	3/4"	1.1/16"
2BJ1219	3/4"	1.3/16"
2BJ1221	3/4"	1.5/16"
2BJ1617	1"	1.1/16"
2BJ1619	1"	1.3/16"
2BJ1621	1"	1.5/16"
2BJ1626	1"	1.5/8"
2BJ2021	1.1/4"	1.5/16"
2BJ2026	1.1/4"	1.5/8"
2BJ3230	2"	1.7/8"

Tech Sheet 20000



# JIC HYDRAULIC ADAPTORS

## Male/Female Swivel Adaptors

### JIC Male 37° Cone x BSPP Swivel Female 60° Cone



0014	Male Thread	Female Thread
2JB0702	7/16"	1/8"
2JB0704	7/16"	1/4"
2JB0706	7/16"	3/8"
2JB0708	7/16"	1/2"
2JB0804	1/2"	1/4"
2JB0806	1/2"	3/8"
2JB0808	1/2"	1/2"
2JB0904	9/16"	1/4"
2JB0906	9/16"	3/8"
2JB1206	3/4"	3/8"
2JB1208	3/4"	1/2"
2JB1210	3/4"	5/8"
2JB1212	3/4"	3/4"
2JB1406	7/8"	3/8"
2JB1408	7/8"	1/2"
2JB1410	7/8"	5/8"
2JB1412	7/8"	3/4"
2JB1712	1.1/16"	3/4"
2JB2116	1.5/16"	1"
2JB2620	1.5/8"	1.1/4"

Tech Sheet 20000

### JIC Male 37° Cone x Metric Swivel Female



0014	Male Thread	Female Thread
01664	7/16"	M12 x 1.5
01651	9/16"	M14 x 1.5
01652	9/16"	M16 x 1.5
01653	9/16"	M18 x 1.5
01654	9/16"	M20 x 1.5
01655	9/16"	M22 x 1.5
01656	3/4"	M16 x 1.5
01657	3/4"	M18 x 1.5
01659	3/4"	M22 x 1.5
01661	7/8"	M18 x 1.5
01662	7/8"	M20 x 1.5
01663	7/8"	M22 x 1.5

Tech Sheet 20000

### JIC Male 37° Cone x JIC Swivel Female 37° Cone



0014	Male Thread	Female Thread
2J0707	7/16"	7/16"
2J0709	7/16"	9/16"
2J0712	7/16"	3/4"
2J0714	7/16"	7/8"
2J0808	1/2"	1/2"
2J0809	1/2"	9/16"
2J0907	9/16"	7/16"
2J0908	9/16"	1/2"
2J0909	9/16"	9/16"
2J0912	9/16"	3/4"
2J0914	9/16"	7/8"
2J1209	3/4"	9/16"
2J1212	3/4"	3/4"
2J1214	3/4"	7/8"
2J1217	3/4"	1.1/16"
2J1412	7/8"	3/4"
2J1414	7/8"	7/8"
2J1417	7/8"	1.1/16"
2J1712	1.1/16"	3/4"
2J1714	1.1/16"	7/8"
2J1717	1.1/16"	1.1/16"
2J1721	1.1/16"	1.5/16"
2J1919	1.3/16"	1.3/16"
2J2126	1.5/16"	1.5/8"
2J2626	1.5/8"	1.5/8"
2J2630	1.5/8"	1.7/8"

Tech Sheet 20000

### Metric Male x JIC Swivel Female 37° Cone



0014	Male Thread	Female Thread
01625	M12 x 1.5	1/2"
01626	M14 x 1.5	9/16"
01627	M16 x 1.5	9/16"
01628	M16 x 1.5	3/4"
01631	M18 x 1.5	3/4"

Tech Sheet 20000

### BSPP Swivel Female 60° Cone x JIC Swivel Female 37° Cone



0014	Thread	Thread
3BJ0407	1/4"	7/16"
3BJ0408	1/4"	1/2"
3BJ0409	1/4"	9/16"
3BJ0607	3/8"	7/16"
3BJ0608	3/8"	1/2"
3BJ0609	3/8"	9/16"
3BJ0612	3/8"	3/4"
3BJ0614	3/8"	7/8"
3BJ0809	1/2"	9/16"
3BJ0812	1/2"	3/4"
3BJ0814	1/2"	7/8"
3BJ0817	1/2"	1.1/16"
3BJ1014	5/8"	7/8"
3BJ1212	3/4"	3/4"
3BJ1217	3/4"	1.1/16"
3BJ1221	3/4"	1.5/16"
3BJ1617	1"	1.1/16"
3BJ1621	1"	1.5/16"
3BJ2026	1.1/4"	1.5/8"

Tech Sheet 20000

## Female Swivel Adaptors

### JIC Swivel Female 37° Cone x JIC Swivel Female 37° Cone



0014	Thread	Thread
3J0707	7/16"	7/16"
3J0709	7/16"	9/16"
3J0712	7/16"	3/4"
3J0808	1/2"	1/2"
3J0809	1/2"	9/16"
3J0909	9/16"	9/16"
3J0912	9/16"	3/4"
3J1212	3/4"	3/4"
3J1409	7/8"	9/16"
3J1412	7/8"	3/4"
3J1414	7/8"	7/8"
3J1717	1.1/16"	1.1/16"
3J1721	1.1/16"	1.5/16"
3J1919	1.3/16"	1.3/16"
3J2121	1.5/16"	1.5/16"
3J2626	1.5/8"	1.5/8"

Tech Sheet 20000



For **ABF Anti Bloc Grease**  
see page 164

# JIC HYDRAULIC ADAPTORS

## 90° Elbows



### JIC Male x JIC Male 90° Forged Compact Elbow

0014	Thread
03085FD	7/16"
03086FD	1/2"
03087FD	9/16"
03088FD	3/4"
03089FD	7/8"
03090FD	1.1/16"
03091FD	1.3/16"

Tech Sheet 20000



### NPTF Male x JIC Male 90° Forged Compact Elbow

0014	Thread	Thread
04050FD	1/8"	7/16"
04053FD	1/4"	7/16"
04059FD	3/8"	9/16"
04060FD	3/8"	3/4"
04065FD	1/2"	3/4"
04073FD	3/4"	1.1/16"
04076FD	1"	1.5/16"

Tech Sheet 20000



### JIC Male x Male Bulkhead 90° Forged

0014	Thread
10525-03	3/8"
10525-04	7/16"
10525-05	1/2"
10525-06	9/16"
10525-08	3/4"
10525-10	7/8"
10525-12	1.1/16"
10525-16	1.5/16"

Tech Sheet 20000



### JIC Male 37° Cone x BSPP Male 90° Positional Forged Elbow

0014	Thread	Thread
27070FDPOS	7/16"	1/4"
27072FDPOS	9/16"	1/4"
27073FDPOS	9/16"	3/8"
27077FDPOS	3/4"	3/8"
27074FDPOS	3/4"	1/2"
27079FDPOS	7/8"	1/2"
27075FDPOS	1.1/16"	3/4"
27076FDPOS	1.5/16"	1"

Tech Sheet 20000



### JIC Male x JIC Swivel Female 90° Forged Compact Elbow 37° Cone

0014	Thread
05050FD	7/16"
05051FD	1/2"
05052FD	9/16"
05053FD	3/4"
05054FD	7/8"
05055FD	1.1/16"
05056FD	1.5/16"

Tech Sheet 20000



### NPT Male x JIC Male 90° Compact Elbow 37° Cone

0014	Thread	Thread
04086	1/8"	5/16"
04050	1/8"	7/16"
04051	1/8"	1/2"
04052	1/8"	9/16"
04053	1/4"	7/16"
04054	1/4"	1/2"
04055	1/4"	9/16"
04056	1/4"	3/4"
04087	3/8"	3/8"
04057	3/8"	7/16"
04058	3/8"	1/2"
04059	3/8"	9/16"
04060	3/8"	3/4"
04061	3/8"	7/8"
04048	3/8"	1.1/16"
04062	1/2"	7/16"
04063	1/2"	1/2"
04064	1/2"	9/16"
04065	1/2"	3/4"
04066	1/2"	7/8"
04082	1/2"	1.1/16"
04070	3/4"	9/16"
04071	3/4"	3/4"
04072	3/4"	7/8"
04073	3/4"	1.1/16"
04075	3/4"	1.5/16"
04085	1"	3/4"
04089	1"	7/8"
04074	1"	1.1/16"
04076	1"	1.5/16"
04077	1"	1.5/8"
04078	1.1/4"	1.5/16"
04079	1.1/4"	1.5/8"
04083	1.1/4"	1.7/8"
04084	1.1/2"	1.5/8"
04080	1.1/2"	1.7/8"
04088	1.1/2"	2.1/2"
04081	2"	2.1/2"

Tech Sheet 20000



### JIC Swivel Female x JIC Swivel Female 90° Compact Elbow 37° Cone

0014	Thread	Thread
XJF0707	7/16"	7/16"
XJF0909	9/16"	9/16"
XJF1212	3/4"	3/4"
XJF1414	7/8"	7/8"
XJF1717	1.1/16"	1.1/16"
XJF1919	1.3/16"	1.3/16"
XJF2121	1.5/16"	1.5/16"

Tech Sheet 20000



### NPT Male x JIC Swivel Female 90° Compact Elbow 37° Cone

0014	Male Thread	Female Thread
99001	3/8"	9/16"

Tech Sheet 20000



### NPT Male x SAE Male 90° Compact Elbow 45° Cone

0014	Thread	Thread
07020	1/8"	7/16"
07021	1/8"	1/2"
07022	1/4"	7/16"
07023	1/4"	1/2"
07024	1/4"	5/8"
07025	1/4"	3/4"
07026	3/8"	7/16"
07027	3/8"	1/2"
07028	3/8"	5/8"
07029	3/8"	3/4"
07030	3/8"	7/8"
07031	1/2"	5/8"

Tech Sheet 20000



For Flaretite Seals  
see page 111

# JIC HYDRAULIC ADAPTORS

## 90° Elbows

### JIC Male 37° Cone x Metric Male 90° Positional Forged Elbow



0014	Thread	Thread
29500FDPOS	7/16"	M12 x 1.5
29501FDPOS	7/16"	M14 x 1.5
29502FDPOS	9/16"	M16 x 1.5
29503FDPOS	9/16"	M18 x 1.5
29505FDPOS	3/4"	M18 x 1.5
29506FDPOS	3/4"	M20 x 1.5
29507FDPOS	3/4"	M22 x 1.5
29508FDPOS	7/8"	M22 x 1.5
29509FDPOS	1.1/16"	M22 x 1.5

Tech Sheet 20000

### JIC Male 37° Cone x JIC Swivel Female 90° Swept Elbow



0014	Thread
10900	7/16"
10902	9/16"
10903	3/4"
10904	7/8"
10905	1.1/16"
10907	1.5/16"
10908	1.5/8"

Tech Sheet 20000

### JIC Male 37° Cone x UNF Male 90° Positional Forged Elbow



0014	Thread	Thread
03085FDPOS	7/16"	7/16"
03087FDPOS	9/16"	9/16"
03088FDPOS	3/4"	3/4"
03089FDPOS	7/8"	7/8"
03090FDPOS	1.1/16"	1.1/16"
03092FDPOS	1.5/16"	1.5/16"

Tech Sheet 20000

### BSPP Male 60° Cone x JIC Swivel Female 37° Cone 90° Compact Elbow



0014	Male Thread	Female Thread
XBMJF0409	1/4"	9/16"
XBMJF0609	3/8"	9/16"
XBMJF0612	3/8"	3/4"
XBMJF0812	1/2"	3/4"
XBMJF0814	1/2"	7/8"
XBMJF1014	5/8"	7/8"
XBMJF1217	3/4"	1.1/16"

Tech Sheet 20000

### BSPP Male 60° Cone x JIC Male 90° Compact Elbow 37° Cone



0014	Thread	Thread
XMB04J07	1/4"	7/16"
XMB04J08	1/4"	1/2"
XMB04J09	1/4"	9/16"
XMB06J09	3/8"	9/16"
XMB06J12	3/8"	3/4"
XMB08J12	1/2"	3/4"
XMB08J14	1/2"	7/8"
XMB12J14	3/4"	7/8"
XMB12J17	3/4"	1.1/16"
XMB16J17	1"	1.1/16"
XMB16J21	1"	1.5/16"
XMB20J26	1.1/4"	1.5/8"
XMB24J30	1.1/2"	1.7/8"

Tech Sheet 20000

### BSPT Male x JIC Male 90° Compact Elbow 37° Cone



0014	Thread	Thread
08550	1/8"	7/16"
08551	1/8"	1/2"
08552	1/8"	9/16"
08553	1/4"	7/16"
08554	1/4"	1/2"
08555	1/4"	9/16"
08556	1/4"	3/4"
08557	3/8"	7/16"
08558	3/8"	1/2"
08559	3/8"	9/16"
08560	3/8"	3/4"
08561	3/8"	7/8"
08562	1/2"	7/16"
08564	1/2"	9/16"
08565	1/2"	3/4"
08566	1/2"	7/8"
08567	1/2"	1.1/16"
08584	1/2"	1.5/16"
08568	3/4"	9/16"
08569	3/4"	3/4"
08570	3/4"	7/8"
08571	3/4"	1.1/16"
08572	3/4"	1.5/16"
08573	1"	3/4"
08585	1"	7/8"
08574	1"	1.1/16"
08575	1"	1.5/16"
08576	1"	1.5/8"
08577	1.1/4"	1.5/16"
08578	1.1/4"	1.5/8"
08579	1.1/4"	1.7/8"
08580	1.1/2"	1.5/8"
08581	1.1/2"	1.7/8"
08582	2"	2.1/2"

Tech Sheet 20000

### JIC Male 37° Cone x BSPP Swivel Female 90° Compact Elbow 60° Cone



0014	Male Thread	Female Thread
09612	7/16"	1/4"
09605	9/16"	3/8"
09608	3/4"	3/8"
09606	3/4"	1/2"
09607	1.1/16"	3/4"
09609	1.5/16"	1"
09610	1.7/8"	1.1/2"

Tech Sheet 20000

### JIC Male 37° Cone x JIC Male 90° Compact Elbow



0014	Thread	Thread
XMJ0909	9/16"	9/16"
XMJ1212	3/4"	3/4"
XMJ1414	7/8"	7/8"
XMJ1717	1.1/16"	1.1/16"
XMJ1919	1.3/16"	1.3/16"
XMJ2121	1.5/16"	1.5/16"
XMJ2626	1.5/8"	1.5/8"
XMJ3030	1.7/8"	1.7/8"

Tech Sheet 20000

### JIC Male 37° Cone x JIC Swivel Female 90° Compact Elbow



0014	Thread	Thread
XJMF0707	7/16"	7/16"
XJMF0808	1/2"	1/2"
XJMF0909	9/16"	9/16"
XJMF1212	3/4"	3/4"
XJMF1414	7/8"	7/8"
XJMF1717	1.1/16"	1.1/16"
XJMF2121	1.5/16"	1.5/16"
XJMF2626	1.5/8"	1.5/8"

Tech Sheet 20000

# JIC HYDRAULIC ADAPTORS

## 45° Elbows

### JIC Male x JIC Swivel Female 45° Swept Elbow



0014	Thread
11905	1.1/16"
11907	1.5/16"

Tech Sheet 20000

### JIC Male x JIC Male Bulkhead 45° Forged



0014	Thread
10375-04	7/16"
10375-05	1/2"
10375-06	9/16"
10375-08	3/4"
10375-10	7/8"
10375-12	1.1/16"
10375-16	1.5/16"

Tech Sheet 20000

### JIC Male 37° Cone x UNF Male 45°



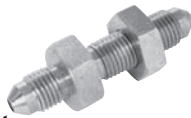
#### Positional Forged Elbow

0014	Thread	Thread
03085FDPOS-45	7/16"	7/16"
03087FDPOS-45	9/16"	9/16"
03088FDPOS-45	3/4"	3/4"
03089FDPOS-45	7/8"	7/8"
03090FDPOS-45	1.1/16"	1.1/16"
03092FDPOS-45	1.5/16"	1.5/16"

Tech Sheet 20000

## Bulkheads

### JIC Male x JIC Male Bulkhead 37° Cone complete with Locknut



0014	Thread
00236	3/8"
00225	7/16"
00226	1/2"
00227	9/16"
00228	3/4"
00229	7/8"
00230	1.1/16"
00234	1.3/16"
00231	1.5/16"
00232	1.5/8"
00233	1.7/8"

Tech Sheet 20000

### JIC Male x JIC Swivel Female 45° Forged Compact Elbow 37° Cone



0014	Thread
05050/45FD	7/16"
05052/45FD	9/16"
05053/45FD	3/4"
05054/45FD	7/8"
05055/45FD	1.1/16"
05056/45FD	1.5/16"

Tech Sheet 20000

### JIC Male x JIC Swivel Female 45° Compact Elbow 37° Cone



0014	Thread
05050/45	7/16"
05052/45	9/16"
05053/45	3/4"
05055/45	1.1/16"
05056/45	1.5/16"
05059/45	1.7/8"

Tech Sheet 20000

### NPT Male x JIC Male 45° Forged Compact Elbow 37° Cone



0014	Thread	Thread
04053/45FD	1/4"	7/16"
04059/45FD	3/8"	9/16"
04060/45FD	3/8"	3/4"
04065/45FD	1/2"	3/4"
04066/45FD	1/2"	7/8"
04073/45FD	3/4"	1.1/16"
04076/45FD	1"	1.5/16"

Tech Sheet 20000

### JIC Male x JIC Male Bulkhead 37° Cone No Locknut



0014	Thread
8JP0707	7/16"
8JP0808	1/2"
8JP0909	9/16"
8JP1212	3/4"
8JP1414	7/8"
8JP1717	1.1/16"
8JP2121	1.5/16"

Tech Sheet 20000

## Tees

### JIC Male x JIC Male x UNF Male Forced Positional On Run with O-Ring



0014	Thread
10716-04-04-04	7/16"
10716-05-05-05	1/2"
10716-06-06-06	9/16"
10716-08-08-08	3/4"
10716-10-10-10	7/8"
10716-12-12-12	1.1/16"

Tech Sheet 20000

### JIC Male x JIC Swivel Female x JIC Male Branch Tee 37° Cone



0014	Thread
ZMFMJ07	7/16"
ZMFMJ08	1/2"
ZMFMJ09	9/16"
ZMFMJ12	3/4"
ZMFMJ14	7/8"
ZMFMJ17	1.1/16"
ZMFMJ21	1.5/16"
ZMFMJ26	1.5/8"
ZMFMJ30	1.7/8"

Tech Sheet 20000

### JIC Male x JIC Swivel Female x JIC Swivel Female Branch Tee 37° Cone



0014	Thread
ZMFFJ07	7/16"
ZMFFJ08	1/2"
ZMFFJ09	9/16"
ZMFFJ12	3/4"
ZMFFJ14	7/8"
ZMFFJ17	1.1/16"
ZMFFJ21	1.5/16"

Tech Sheet 20000

### JIC Swivel Female x JIC Swivel Female x JIC Male Branch Tee 37° Cone



0014	Thread
ZFFMJ07	7/16"
ZFFMJ08	1/2"
ZFFMJ09	9/16"
ZFFMJ12	3/4"
ZFFMJ14	7/8"
ZFFMJ17	1.1/16"
ZFFMJ21	1.5/16"

Tech Sheet 20000

# JIC HYDRAULIC ADAPTORS

## Tees

**JIC Male x JIC Male x UNF Male Forged Positional On Branch with O-Ring**



0014	Thread
10715-04-04-04	7/16"
10715-05-05-05	1/2"
10715-06-06-06	9/16"
10715-08-08-08	3/4"
10715-10-10-10	7/8"
10715-12-12-12	1.1/16"

Tech Sheet 20000

**JIC Male Tee 37° Cone**



0014	Thread
ZMJ07	7/16"
ZMJ09	9/16"
ZMJ12	3/4"
ZMJ14	7/8"
ZMJ17	1.1/16"
ZMJ19	1.3/16"
ZMJ21	1.5/16"

Tech Sheet 20000

**JIC Male x JIC Male x JIC Swivel Female Branch Tee 37° Cone**



0014	Thread
ZMMFJ07	7/16"
ZMMFJ09	9/16"
ZMMFJ12	3/4"
ZMMFJ14	7/8"
ZMMFJ17	1.1/16"
ZMMFJ21	1.5/16"
ZMMFJ26	1.5/8"

Tech Sheet 20000

**JIC Swivel Female Tee 37° Cone**



0014	Thread
ZFJ07	7/16"
ZFJ08	1/2"
ZFJ09	9/16"
ZFJ12	3/4"
ZFJ14	7/8"
ZFJ17	1.1/16"
ZFJ21	1.5/16"

Tech Sheet 20000

## Crosses



**JIC Male Cross 37° Cone**

0014	Thread
03030	7/16"
03031	1/2"
03032	9/16"
03033	3/4"
03034	7/8"
03036	1.1/16"
03035	1.5/16"
03037	1.5/8"

Tech Sheet 20000

## Plugs



**JIC Solid Plug 37° Cone**

0014	Thread
6J05	5/16"
6J07	7/16"
6J08	1/2"
6J09	9/16"
6J12	3/4"
6J14	7/8"
6J17	1.1/16"
6J19	1.3/16"
6J21	1.5/16"
6J26	1.5/8"
6J30	1.7/8"
6J40	2.1/2"

Tech Sheet 20000

## Blanking Caps



**JIC Swivel 37° Coned Blanking Cap**

0014	Thread
7J07	7/16"
7J08	1/2"
7J09	9/16"
7J12	3/4"
7J14	7/8"
7J17	1.1/16"
7J19	1.3/16"
7J21	1.5/16"
7J26	1.5/8"
7J30	1.7/8"
7J40	2.1/2"

Tech Sheet 20000

## Locknuts



**JIC Locknut**

0014	Thread
JLN07	7/16"
JLN08	1/2"
JLN09	9/16"
JLN12	3/4"
JLN14	7/8"
JLN17	1.1/16"
JLN21	1.5/16"
JLN26	1.5/8"
JLN30	1.7/8"

Tech Sheet 20000

## Crimp Nuts



**JIC Crimp Nut**

0014	Thread
708075	7/16"
708076	1/2"
708077	9/16"
708078	5/8"
708079	3/4"
708080	7/8"
708084	1.3/16"
708081	1.5/16"
708083	1.5/8"
708082	1.7/8"
708085	2.1/2"

Tech Sheet 20000

## Hose Inserts



**JIC Male 37° Cone x Push-in Straight**

0014	Thread	To Suit Hose ID
09711	7/16"	1/4"
09712	9/16"	3/8"

Tech Sheet 20000

**JIC Swivel Female 37° Cone x Push-in Straight**



0014	Thread	To Suit Hose ID
09700	7/16"	1/4"
09701	9/16"	3/8"
09705	3/4"	3/8"
09702	3/4"	1/2"
09703	7/8"	5/8"
09704	1.1/16"	3/4"
09707	1.5/16"	1"

Tech Sheet 20000

**JIC Swivel Female 37° Cone x Push-in 90° Swept Elbow**



0014	Thread	To Suit Hose ID
09301	7/16"	1/4"
09302	9/16"	3/8"
09303	3/4"	1/2"
09300	7/8"	5/8"
09304	1.1/16"	3/4"
09305	1.5/16"	1"

Tech Sheet 20000

**JIC Swivel Female x Push-in 45° Swept Elbow 37° Cone**



0014	Thread	To Suit Hose ID
09320	7/16"	1/4"
09321	9/16"	3/8"
09322	3/4"	1/2"
09323	7/8"	5/8"
09324	1.1/16"	3/4"

Tech Sheet 20000

# JIC HYDRAULIC ADAPTORS

## Tube Nuts



### Universal Metric & Imperial

0014	Thread	To Suit Tube OD mm	To Suit Tube OD
4JTN	7/16"	6	1/4"
5JTN	1/2"	8	5/16"
6JTN	9/16"	10	3/8"
8JTN	3/4"	12	1/2"
10JTN	7/8"	14, 15 & 16	5/8"
12JTN	1.1/16"	18 & 20	3/4"
16JTN	1.5/16"	25	1"
20JTN	1.5/8"	28, 30 & 32	1.1/4"
24JTN	1.7/8"	35 & 38	1.1/2"

Tech Sheet 20000

## Tube Sleeves



### Imperial

0014	To Suit Tube OD
4JITS	1/4"
5JITS	5/16"
6JITS	3/8"
8JITS	1/2"
10JITS	5/8"
12JITS	3/4"
16JITS	1"
20JITS	1.1/4"
24JITS	1.1/2"

Tech Sheet 20000



### Metric

0014	To Suit Tube OD mm
6JMITS	6
8JMITS	8
10JMITS	10
12JMITS	12
14JMITS	14
15JMITS	15
16JMITS	16
18JMITS	18
20JMITS	20
25JMITS	25
30JMITS	30
38JMITS	38

Tech Sheet 20000

# ORFS HYDRAULIC ADAPTORS

## Straight Adaptors



### Male x Male Adaptor

0014	Thread
9305-04	9/16"
9305-06	11/16"
9305-08	13/16"
9305-10	1"
9305-12	1.3/16"
9305-16	1.7/16"
9305-20	1.11/16"

Tech Sheet 20000



### Male x Male Bulkhead Only

0014	Thread
9325-04	9/16"
9325-06	11/16"
9325-08	13/16"
9325-10	1"
9325-12	1.3/16"
9325-16	1.7/16"
9325-20	1.11/16"

Tech Sheet 20000



### Bulkhead Locknut

0014	Thread
9925-04	9/16"
9925-06	11/16"
9925-08	13/16"
9925-10	1"
9925-12	1.3/16"
9925-16	1.7/16"
9925-20	1.11/16"

Tech Sheet 20000



### Male x Swivel Female

0014	Male Thread	Female Thread
9015-04-06AS	9/16"	11/16"
9015-06-08AS	11/16"	13/16"
9015-10-12AS	1"	1.3/16"
9015-12-16AS	1.3/16"	1.7/16"
9015-16-20AS	1.7/16"	1.11/16"
9015-08-10AS	13/16"	1"
9015-04-12AS	9/16"	13/16"
9015-06-12AS	11/16"	1.3/16"

Tech Sheet 20000

# ORFS HYDRAULIC ADAPTORS

## 90° Elbows

### Male x Male 90° Forged Compact Elbow



0014	Thread
9505-04-04	9/16"
9505-06-06	11/16"
9505-08-08	13/16"
9505-10-10	1"
9505-12-12	1.3/16"
9505-16-16	1.7/16"

Tech Sheet 20000

### Male x Swivel Female 90° Forged Compact Elbow



0014	Thread
9506-04-04	9/16"
9506-06-06	11/16"
9506-08-08	13/16"
9506-10-10	1"
9506-12-12	1.3/16"
9506-16-16	1.7/16"
9506-20-20	1.11/16"
9506-24-24	2"

Tech Sheet 20000

### Male x BSPP Male 90° Positional Forged Elbow with O-Ring



0014	Thread	Thread
9515-04-04B	9/16"	1/4"
9515-08-06B	13/16"	3/8"
9515-10-08B	1"	1/2"
9515-12-12B	1.3/16"	3/4"
9515-16-16B	1.7/16"	1"

Tech Sheet 20000

### Male x Male 90° Forged Bulkhead



0014	Thread
9525-04-04	9/16"
9525-06-06	11/16"
9525-08-08	13/16"
9525-10-10	1"
9525-12-12	1.3/16"

Tech Sheet 20000

### Male x UNF Male 90° Positional Forged Elbow with O-Ring



0014	Thread	Thread
9515-04-04	9/16"	7/16"
9515-04-06	9/16"	9/16"
9515-06-06	11/16"	9/16"
9515-08-08	13/16"	3/4"
9515-10-10	1"	7/8"
9515-10-12	1"	1.1/16"
9515-12-08	1.3/16"	3/4"
9515-12-12	1.3/16"	1.1/16"
9515-16-16	1.7/16"	1.5/16"

Tech Sheet 20000

## 45° Elbows

### Male x Swivel Female 45° Forged Compact Elbow



0014	Thread
9356-04-04	9/16"
9356-06-06	11/16"
9356-08-08	13/16"
9356-10-10	1"
9356-12-12	1.3/16"
9356-16-16	1.7/16"
9356-20-20	1.11/16"
9356-24-24	2"

Tech Sheet 20000

## Tees

Seal: Nitrile

### Forged Male Tee



0014	Thread
9705-04-04-04	9/16"
9705-06-06-06	11/16"
9705-08-08-08	13/16"
9705-10-10-10	1"
9705-12-12-12	1.3/16"
9705-16-16-16	1.7/16"

Tech Sheet 20000

### Male x Female x Male Swivel Forged Run Tee



0014	Thread
9706-04-04-04	9/16"
9706-06-06-06	11/16"
9706-08-08-08	13/16"
9706-10-10-10	1"
9706-12-12-12	1.3/16"
9706-16-16-16	1.7/16"
9706-20-20-20	1.11/16"

Tech Sheet 20000

### Male Tee UNF Positional on Run with O-Ring



0014	Thread A	Thread B	Thread C
9716-04-04-04	9/16"	9/16"	7/16"
9716-06-06-06	11/16"	11/16"	9/16"
9716-08-08-08	13/16"	13/16"	3/4"
9716-10-10-10	1"	1"	7/8"
9716-12-12-12	1.3/16"	1.3/16"	1.1/16"

Tech Sheet 20000

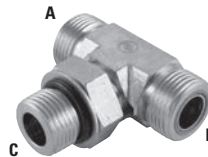
### Male x Male x Swivel Female Forged Branch Tee



0014	Thread
9707-04-04-04	9/16"
9707-06-06-06	11/16"
9707-08-08-08	13/16"
9707-10-10-10	1"
9707-12-12-12	1.3/16"
9707-16-16-16	1.7/16"
9707-20-20-20	1.11/16"

Tech Sheet 20000

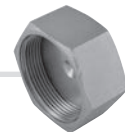
### Male Tee UNF Positional on Branch Forged with O-Ring



0014	Thread A	Thread B	Thread C
9715-06-06-06	11/16"	11/16"	9/16"
9715-08-08-08	13/16"	13/16"	3/4"
9715-10-10-10	1"	1"	7/8"
9715-12-12-12	1.3/16"	1.3/16"	1.1/16"

Tech Sheet 20000

## Caps



### Female Thread

0014	Thread
9129-04	9/16"
9129-06	11/16"
9129-08	13/16"
9129-10	1"
9129-12	1.3/16"
9129-16	1.7/16"
9129-20	1.11/16"
9129-24	2"

Tech Sheet 20000



# High Pressure Hydraulic Adaptors



## HYDRAULIC ADAPTORS 1/8"-3/4" 680 BAR 1"-2" 500 BAR



Standard hydraulic adaptors do not adhere to the working pressure of multi spiral hose. Please use KR500 Hydraulic Adaptors for high pressure and multi spiral applications. Also available in stainless steel and Hiduron upon request.



Maximum Working Pressure:  
1/8" to 3/4" 680 bar  
1" to 2" 500 bar

### Equal Male Unions



#### BSPP

0450	Thread
KREU2	1/8"
KREU4	1/4"
KREU6	3/8"
KREU8	1/2"
KREU10	5/8"
KREU12	3/4"
KREU16	1"
KREU20	1.1/4"
KREU24	1.1/2"
KREU32	2"

Tech Sheet 10728



#### BSPP x BSPT

0450	Thread
KREUPT2	1/8"
KREUPT4	1/4"
KREUPT6	3/8"
KREUPT8	1/2"
KREUPT12	3/4"
KREUPT16	1"
KREUPT20	1.1/4"
KREUPT24	1.1/2"
KREUPT32	2"

Tech Sheet 10729



#### BSPP x NPT

0450	Thread
KREUPAT2	1/8"
KREUPAT4	1/4"
KREUPAT6	3/8"
KREUPAT8	1/2"
KREUPAT12	3/4"
KREUPAT16	1"
KREUPAT20	1.1/4"

Tech Sheet 10730

### Unequal Male Unions

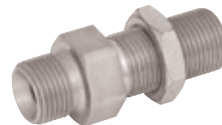


#### BSPP

0450	Thread	Thread
KRUU4-2	1/4"	1/8"
KRUU6-4	3/8"	1/4"
KRUU8-4	1/2"	1/4"
KRUU8-6	1/2"	3/8"
KRUU10-4	5/8"	1/4"
KRUU10-6	5/8"	3/8"
KRUU10-8	5/8"	1/2"
KRUU12-6	3/4"	3/8"
KRUU12-8	3/4"	1/2"
KRUU12-10	3/4"	5/8"
KRUU16-8	1"	1/2"
KRUU16-10	1"	5/8"
KRUU16-12	1"	3/4"
KRUU16-14	1"	7/8"
KRUU20-12	1.1/4"	3/4"
KRUU20-16	1.1/4"	1"
KRUU24-16	1.1/2"	1"
KRUU24-20	1.1/2"	1.1/4"
KRUU32-16	2"	1"
KRUU32-20	2"	1.1/4"
KRUU32-24	2"	1.1/2"

Tech Sheet 10731

### Equal Male Bulkhead Unions



#### BSPP

0450	Thread
KREUBH4	1/4"
KREUBH6	3/8"
KREUBH8	1/2"
KREUBH10	5/8"
KREUBH12	3/4"
KREUBH16	1"
KREUBH20	1.1/4"
KREUBH24	1.1/2"

Tech Sheet 10732

### Reducing Bushes



#### BSPP

0450	Thread	Thread
KRRB4-2	1/4"	1/8"
KRRB6-2	3/8"	1/8"
KRRB6-4	3/8"	1/4"
KRRB8-2	1/2"	1/8"
KRRB8-4	1/2"	1/4"
KRRB8-6	1/2"	3/8"
KRRB10-8	5/8"	1/2"
KRRB12-4	3/4"	1/4"
KRRB12-6	3/4"	3/8"
KRRB12-8	3/4"	1/2"
KRRB16-4	1"	1/4"
KRRB16-6	1"	3/8"
KRRB16-8	1"	1/2"
KRRB16-12	1"	3/4"
KRRB20-4	1.1/4"	1/4"
KRRB20-6	1.1/4"	3/8"
KRRB20-8	1.1/4"	1/2"
KRRB20-12	1.1/4"	3/4"
KRRB20-16	1.1/4"	1"
KRRB24-8	1.1/2"	1/2"
KRRB24-12	1.1/2"	3/4"
KRRB24-16	1.1/2"	1"
KRRB24-20	1.1/2"	1.1/4"
KRRB32-16	2"	1"
KRRB32-20	2"	1.1/4"
KRRB32-24	2"	1.1/2"

Tech Sheet 10733

### Bleed Valve



#### BSPP

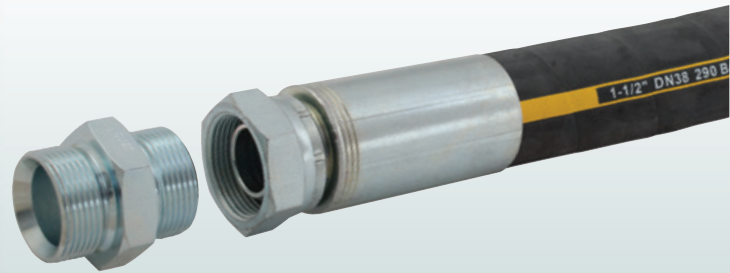
0450	Thread
KRBV2	1/8"

Tech Sheet 10799

Minimum order quantity on selected items may apply



Over 2. years of proven high performance with a comprehensive history of product approvals and 3rd party accreditations.



## HYDRAULIC ADAPTORS 1/8" - 3/4" 680 BAR 1" - 2" 500 BAR



Standard hydraulic adaptors do not adhere to the working pressure of multi spiral hose. Please use KR500 Hydraulic Adaptors for high pressure and multi spiral applications. Also available in stainless steel and Hiduron upon request.

Maximum Working Pressure:  
1/8" to 3/4" 680 bar  
1" to 2" 500 bar

### Male Elbows



#### BSPP

O450	Thread
KREME4	1/4"
KREME6	3/8"
KREME8	1/2"
KREME12	3/4"
KREME16	1"
KREME20	1.1/4"
KREME24	1.1/2"

Tech Sheet 10734

### Female Elbows



#### BSPP

O450	Thread
KREFE2	1/8"
KREFE4	1/4"
KREFE6	3/8"
KREFE8	1/2"
KREFE12	3/4"
KREFE16	1"
KREFE20	1.1/4"
KREFE24	1.1/2"
KREFE32	2"

Tech Sheet 10735

### Fixed Bushes

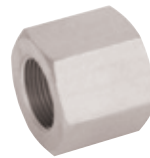


#### BSPT Male x BSPP Female

O450	Male Thread	Female Thread
KRAB4T-4	1/4"	1/4"
KRAB6T-4	3/8"	1/4"
KRAB6T-6	3/8"	3/8"
KRAB8T-8	1/2"	1/2"
KRAB12T-12	3/4"	3/4"
KRAB16T-16	1"	1"
KRAB24T-24	1.1/2"	1.1/2"

Tech Sheet 10736

### Female Hexagon Sockets



#### BSPP

O450	Thread	Thread
KRFA4-2	1/4"	1/8"
KRFA4-4	1/4"	1/4"
KRFA6-2	3/8"	1/8"
KRFA6-4	3/8"	1/4"
KRFA6-6	3/8"	3/8"
KRFA8-2	1/2"	1/8"
KRFA8-4	1/2"	1/4"
KRFA8-6	1/2"	3/8"
KRFA8-8	1/2"	1/2"
KRFA12-12	3/4"	3/4"
KRFA16-16	1"	1"
KRFA20-20	1.1/4"	1.1/4"

Tech Sheet 10737

### Female Tees



#### BSPP

O450	Thread
KREFT2	1/8"
KREFT4	1/4"
KREFT6	3/8"
KREFT8	1/2"
KREFT12	3/4"
KREFT16	1"
KREFT20	1.1/4"
KREFT24	1.1/2"
KREFT32	2"

Tech Sheet 10738

### Female Branch Tees



#### BSPP

O450	Thread
KRFOMT4	1/4"
KRFOMT6	3/8"
KRFOMT8	1/2"
KRFOMT12	3/4"
KRFOMT16	1"
KRFOMT20	1.1/4"
KRFOMT24	1.1/2"

Tech Sheet 10739

Minimum order quantity on selected items may apply

# HYDRAULIC ADAPTORS

## 1/8" - 3/4" 680 BAR 1" - 2" 500 BAR

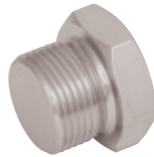


Standard hydraulic adaptors do not adhere to the working pressure of multi spiral hose. Please use KR500 Hydraulic Adaptors for high pressure and multi spiral applications. Also available in stainless steel and Hiduron upon request.



Maximum Working Pressure:  
1/8" to 3/4" 680 bar  
1" to 2" 500 bar

### Plugs



#### BSPP

0450	Thread
KRP2	1/8"
KRP4	1/4"
KRP6	3/8"
KRP8	1/2"
KRP10	5/8"
KRP12	3/4"
KRP16	1"
KRP20	1.1/4"
KRP24	1.1/2"
KRP32	2"

Tech Sheet 10740



#### BSPT

0450	Thread
KRPT2	1/8"
KRPT4	1/4"
KRPT6	3/8"
KRPT8	1/2"
KRPT12	3/4"
KRPT16	1"
KRPT20	1.1/4"

Tech Sheet 10741

### Gauge Adaptors

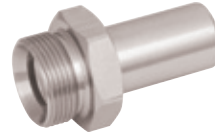


#### BSPP

0450	Thread	Thread
KRGA4-4	1/4"	1/4"
KRGA6-4	3/8"	1/4"
KRGA8-4	1/2"	1/4"

Tech Sheet 10742

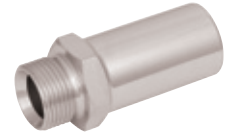
### Stud Standpipes



#### OD Imperial to BSPP

0450	OD	Thread
KR4-2SSAR	1/4"	1/8"
KR4-4SSAR	1/4"	1/4"
KR5-2SSAR	5/16"	1/8"
KR5-4SSAR	5/16"	1/4"
KR5-6SSAR	5/16"	3/8"
KR6-4SSAR	3/8"	1/4"
KR6-6SSAR	3/8"	3/8"
KR8-4SSAR	1/2"	1/4"
KR8-6SSAR	1/2"	3/8"
KR8-8SSAR	1/2"	1/2"
KR10-6SSAR	5/8"	3/8"
KR10-8SSAR	5/8"	1/2"
KR10-12SSAR	5/8"	3/4"
KR12-8SSAR	3/4"	1/2"
KR12-12SSAR	3/4"	3/4"
KR14-8SSAR	7/8"	1/2"
KR14-12SSAR	7/8"	3/4"
KR14-16SSAR	7/8"	1"
KR16-12SSAR	1"	3/4"
KR16-16SSAR	1"	1"
KR20-12SSAR	1.1/4"	3/4"
KR20-16SSAR	1.1/4"	1"
KR20-20SSAR	1.1/4"	1.1/4"
KR32-24SSAR	2"	1.1/2"
KR32-32SSAR	2"	2"

Tech Sheet 10743



#### OD Metric to BSPP

0450	OD mm	Thread
KRM6-2SSAR	6	1/8"
KRM6-4SSAR	6	1/4"
KRM8-2SSAR	8	1/8"
KRM8-4SSAR	8	1/4"
KRM8-6SSAR	8	3/8"
KRM10-4SSAR	10	1/4"
KRM10-6SSAR	10	3/8"
KRM12-4SSAR	12	1/4"
KRM12-6SSAR	12	3/8"
KRM12-8SSAR	12	1/2"
KRM16-6SSAR	16	3/8"
KRM16-8SSAR	16	1/2"
KRM16-12SSAR	16	3/4"
KRM20-8SSAR	20	1/2"
KRM20-12SSAR	20	3/4"
KRM22-8SSAR	22	1/2"
KRM22-12SSAR	22	3/4"
KRM22-16SSAR	22	1"
KRM25-12SSAR	25	3/4"
KRM25-16SSAR	25	1"
KRM30-12SSAR	30	3/4"
KRM30-16SSAR	30	1"
KRM30-20SSAR	30	1.1/4"
KRM38-16SSAR	38	1"
KRM38-20SSAR	38	1.1/4"
KRM38-24SSAR	38	1.1/2"
KRM50-24SSAR	50	1.1/2"
KRM50-32SSAR	50	2"

Tech Sheet 10744

### Banjos

Seals sold separately



#### BSPP

0450	Thread
KRA4-4BJ	1/4"
KRA6-6BJ	3/8"
KRA8-8BJ	1/2"
KRA12-12BJ	3/4"

Tech Sheet 10745

### Bleed Plugs (Air)



#### BSPP

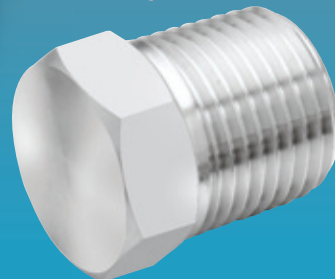
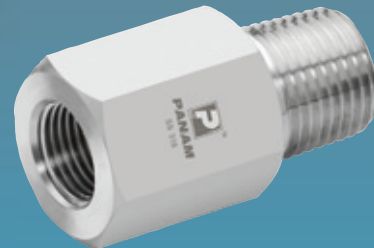
0450	Thread
KRP2AB	1/8"

Tech Sheet 10746

Minimum order quantity on selected items may apply



# Stainless Steel Adaptors



# HYDRAULIC STAINLESS STEEL ADAPTORS

stainless  
steel



## Male x Male Straight Adaptors



### BSPP x BSPP

0044	Thread	Thread
2025-1401	1/8"	1/8"
2025-1419	1/4"	1/8"
2025-1427	1/4"	1/4"
2025-1435	3/8"	1/8"
2025-1443	3/8"	1/4"
2025-1450	3/8"	3/8"
2025-1468	1/2"	1/4"
2025-1476	1/2"	3/8"
2025-1484	1/2"	1/2"
2025-1495	5/8"	1/2"
2025-1505	5/8"	5/8"
2025-1520	3/4"	1/4"
2025-1526	3/4"	3/8"
2025-1534	3/4"	1/2"
2025-1538	3/4"	5/8"
2025-1559	3/4"	3/4"
2025-1567	1"	1/2"
2025-1572	1"	5/8"
2025-1583	1"	3/4"
2025-1591	1"	1"
2025-1595	1.1/4"	3/4"
2025-1600	1.1/4"	1"
2025-1609	1.1/4"	1.1/4"
2025-1611	1.1/2"	1"
2025-1615	1.1/2"	1.1/4"
2025-1617	1.1/2"	1.1/2"
2025-1620	2"	1.1/2"
2025-1625	2"	2"

Tech Sheet 20884



### BSPP x BSPT

0044	Thread
2033-9693	1/4"
2033-9761	3/8"
2033-9719	1/2"
2033-9727	3/4"
2033-9735	1"

Tech Sheet 20884

### BSPP x NPT



0044	BSPP Thread	NPT Thread
2025-1633	1/8"	1/8"
2025-1636	1/8"	1/4"
2025-1639	1/4"	1/8"
2025-1641	1/4"	1/4"
2025-1643	1/4"	3/8"
2025-1656	3/8"	1/4"
2025-1658	3/8"	3/8"
2025-1661	3/8"	1/2"
2025-1671	1/2"	3/8"
2025-1674	1/2"	1/2"
2025-1677	5/8"	1/2"
2025-1679	5/8"	3/4"
2025-1681	3/4"	1/2"
2025-1682	3/4"	3/4"
2025-1684	3/4"	1"
2025-1687	1"	3/4"
2025-1690	1"	1"
2025-1700	1.1/4"	1.1/4"
2025-1710	1.1/2"	1.1/2"
2025-1720	2"	2"

Tech Sheet 20884



### BSPT x BSPT

0044	Thread	Thread
2025-1708	1/8"	1/8"
2025-1715	1/4"	1/8"
2025-1724	1/4"	1/4"
2025-1727	3/8"	1/8"
2025-1732	3/8"	1/4"
2025-1740	3/8"	3/8"
2025-1845	1/2"	1/8"
2025-1852	1/2"	1/4"
2025-1856	1/2"	3/8"
2025-1865	1/2"	1/2"
2025-1881	3/4"	1/8"
2025-1885	3/4"	1/4"
2025-1889	3/4"	3/8"
2025-1894	3/4"	1/2"
2025-1898	3/4"	3/4"
2025-1905	1"	1/8"
2025-1910	1"	1/4"
2025-1915	1"	3/8"
2025-1920	1"	1/2"
2025-1925	1"	3/4"
2025-1931	1"	1"
2025-1935	1.1/4"	1"
2025-1940	1.1/4"	1.1/4"
2025-1945	1.1/2"	1"
2025-1950	1.1/2"	1.1/2"
2025-1956	2"	1"
2025-1960	2"	1.1/2"
2025-1965	2"	2"

Tech Sheet 20884

## Male x Female Straight Adaptors



### Male x Female Swivel, BSPP

0044	Male Thread	Female Thread
2025-1930	1/8"	1/8"
2025-1948	1/4"	1/4"
2025-1955	1/4"	3/8"
2025-1961	1/4"	1/2"
2025-1963	3/8"	1/4"
2025-1971	3/8"	3/8"
2025-1989	3/8"	1/2"
2025-1997	1/2"	3/8"
2025-2003	1/2"	1/2"
2025-2020	1/2"	3/4"
2025-2029	3/4"	1/2"
2025-2037	3/4"	3/4"
2025-2043	3/4"	1"
2025-2060	1"	1"

Tech Sheet 20884

### Female Swivel, BSPP x BSPT Male

0044	Thread
2033-9862	1/8"
2033-9867	1/4"
2033-9875	3/8"
2033-9883	1/2"
2033-9891	3/4"
2033-9896	1"

Tech Sheet 20884

### Male x Female Fixed, BSPP



0044	Male Thread	Female Thread
2025-8121	1/8"	1/8"
2025-8131	1/4"	1/8"
2025-8142	1/4"	1/4"
2025-8151	3/8"	1/8"
2025-8161	3/8"	1/4"
2025-8171	3/8"	3/8"
2025-8181	1/2"	1/4"
2025-8201	1/2"	3/8"
2025-8211	1/2"	1/2"
2025-8191	3/4"	1/4"
2025-8221	3/4"	3/8"
2025-8231	3/4"	1/2"
2025-8241	3/4"	3/4"
2025-8251	1"	1/2"
2025-8261	1"	1"
2025-8271	1"	3/4"
2025-8281	1.1/4"	1/2"
2025-8291	1.1/4"	3/4"
2025-8301	1.1/4"	1"
2025-8311	1.1/4"	1.1/4"
2025-8321	1.1/2"	3/4"
2025-8331	1.1/2"	1"
2025-8341	1.1/2"	1.1/2"
2025-8351	1.1/2"	1.1/4"
2025-8361	2"	2"

Tech Sheet 20884

# HYDRAULIC STAINLESS STEEL ADAPTORS

stainless  
steel



## Female x Female Straight Adaptors



### Swivel, BSPP

0044	Thread	Thread
2025-2078	1/4"	1/4"
2025-2082	3/8"	1/4"
2025-2086	3/8"	3/8"
2025-2089	1/2"	1/4"
2025-2093	1/2"	3/8"
2025-2094	1/2"	1/2"
2025-2100	5/8"	5/8"
2025-2122	3/4"	1/2"
2025-2132	3/4"	3/4"
2025-2110	1"	1"

Tech Sheet 20884

## Fixed Female Hexagon Socket, BSPP



0044	Thread
2025-2466	1/8"
2025-2474	1/4"
2025-2482	3/8"
2025-2490	1/2"
2025-2508	3/4"
2025-2516	1"

Tech Sheet 20884

## Elbows



### Equal Elbow, BSPP

0044	Thread
2033-9922	1/8"
2033-9933	1/4"
2033-9941	3/8"
2033-9958	1/2"
2033-9962	5/8"
2033-9963	3/4"
2033-9974	1"
2033-9982	1.1/4"
2033-9992	1.1/2"

Tech Sheet 20884

## Male x Female Swivel, BSPP



0044	Thread
2025-2185	1/8"
2025-2193	1/4"
2025-2201	3/8"
2025-2219	1/2"
2025-2223	5/8"
2025-2227	3/4"
2025-2232	1"
2025-2240	1.1/4"
2025-2245	1.1/2"

Tech Sheet 20884

## Female Swivel, BSPP



0044	Thread
2025-2128	1/8"
2025-2136	1/4"
2025-2151	1/2"
2025-2169	3/4"

Tech Sheet 20884

## Tees



### Male, BSPP

0044	Thread
2025-2321	1/8"
2025-2326	1/4"
2025-2334	3/8"
2025-2342	1/2"
2025-2449	3/4"
2025-2354	1"

Tech Sheet 20884



### Female Swivel, BSPP

0044	Thread
2025-2250	1/4"
2025-2258	3/8"
2025-2263	1/2"
2025-2273	5/8"
2025-2283	3/4"
2025-2293	1"

Tech Sheet 20884



### Female Swivel Branch, BSPP

0044	Thread
2025-4001	1/8"
2025-4011	1/4"
2025-4021	3/8"
2025-4031	1/2"
2025-4041	3/4"
2025-4051	1"

Tech Sheet 20884



### Female Swivel Run, BSPP

0044	Thread
2025-4501	1/8"
2025-4511	1/4"
2025-4521	3/8"
2025-4531	1/2"
2025-4541	3/4"
2025-4551	1"

Tech Sheet 20884

## Bulkhead complete with Locknut



### BSPP

0044	Thread
2025-2391	1/4"
2025-2409	3/8"
2025-2417	1/2"
2025-2425	5/8"
2025-2433	3/4"
2025-2441	1"
2025-2445	1.1/4"
2025-2450	1.1/2"

Tech Sheet 20884

## Plugs



### BSPP

0044	Thread
2033-4002	1/8"
2033-4012	1/4"
2033-4022	3/8"
2033-4032	1/2"
2033-4042	5/8"
2033-4052	3/4"
2033-4062	1"
2033-4072	1.1/4"
2033-4082	1.1/2"
2033-4092	2"

Tech Sheet 20884



### BSPT

0044	Thread
2025-2524	1/8"
2025-2532	1/4"
2025-2540	3/8"
2025-2557	1/2"
2025-2565	3/4"
2025-2573	1"
2025-2582	1.1/4"
2025-2592	1.1/2"
2025-2602	2"

Tech Sheet 20884

## Caps



### BSPP

0044	Thread
2033-8301	1/8"
2033-8311	1/4"
2033-8321	3/8"
2033-8331	1/2"
2033-8341	3/4"
2033-8351	1"

Tech Sheet 20884

# 316 PRECISION INSTRUMENTATION PIPE FITTINGS

stainless  
steel



## Hexagon Nipples



### Male x Male, NPT

0342	Thread
PHN-01	1/16"
PHN-02	1/8"
PHN-04	1/4"
PHN-06	3/8"
PHN-08	1/2"
PHN-12	3/4"
PHN-16	1"

Tech Sheet 20885

## Hexagon Nipples, Long



### Male x Male, NPT

0342	Thread	Length
PHNL-02-L1.5	1/8"	1.5"
PHNL-02-L2	1/8"	2"
PHNL-02-L3	1/8"	3"
PHNL-02-L4	1/8"	4"
PHNL-02-L6	1/8"	6"
PHNL-04-L1.5	1/4"	1.5"
PHNL-04-L2	1/4"	2"
PHNL-04-L3	1/4"	3"
PHNL-04-L4	1/4"	4"
PHNL-04-L6	1/4"	6"
PHNL-06-L1.5	3/8"	1.5"
PHNL-06-L2	3/8"	2"
PHNL-06-L3	3/8"	3"
PHNL-06-L4	3/8"	4"
PHNL-06-L6	3/8"	6"
PHNL-08-L1.5	1/2"	1.5"
PHNL-08-L2	1/2"	2"
PHNL-08-L3	1/2"	3"
PHNL-08-L4	1/2"	4"
PHNL-08-L6	1/2"	6"
PHNL-12-L2	3/4"	2"
PHNL-12-L3	3/4"	3"
PHNL-12-L4	3/4"	4"
PHNL-12-L6	3/4"	6"
PHNL-16-L1.5	1"	1.5"
PHNL-16-L2	1"	2"
PHNL-16-L3	1"	3"
PHNL-16-L4	1"	4"
PHNL-16-L6	1"	6"

Tech Sheet 20885

## Reducing Hexagon Nipples



### Male x Male, NPT

0342	Thread	Thread
PRHN-02-01	1/8"	1/16"
PRHN-04-02	1/4"	1/8"
PRHN-06-02	3/8"	1/8"
PRHN-06-04	3/8"	1/4"
PRHN-08-02	1/2"	1/8"
PRHN-08-04	1/2"	1/4"
PRHN-08-06	1/2"	3/8"
PRHN-12-06	3/4"	1/4"
PRHN-12-08	3/4"	1/2"
PRHN-16-08	1"	1/2"
PRHN-16-12	1"	3/4"

Tech Sheet 20885

## Hexagon Coupling



### Female x Female, NPT

0342	Thread
PHC-02	1/8"
PHC-04	1/4"
PHC-06	3/8"
PHC-08	1/2"
PHC-12	3/4"
PHC-16	1"

Tech Sheet 20885

## Reducing Hexagon Couplings



### Female x Female, NPT

0342	Thread	Thread
PRC-04-02	1/4"	1/8"
PRC-06-04	3/8"	1/4"
PRC-08-02	1/2"	1/8"
PRC-08-04	1/2"	1/4"
PRC-08-06	1/2"	3/8"
PRC-12-04	3/4"	1/4"
PRC-12-08	3/4"	1/2"
PRC-16-08	1"	1/2"

Tech Sheet 20885

## Equal Male x Female Adaptors



### Male x Female, NPT

0342	Thread
PPA-02	1/8"
PPA-04	1/4"
PPA-06	3/8"
PPA-08	1/2"
PPA-12	3/4"
PPA-16	1"

Tech Sheet 20885

## Reducing Male x Female Adaptors



### Male x Female, NPT

0342	Male Thread	Female Thread
PRA-02-01	1/16"	1/8"
PRA-04-02	1/8"	1/4"
PRA-06-02	1/8"	3/8"
PRA-06-04	1/4"	3/8"
PRA-08-02	1/8"	1/2"
PRA-08-04	1/4"	1/2"
PRA-08-06	3/8"	1/2"
PRA-12-04	1/4"	3/4"
PRA-12-06	3/8"	3/4"
PRA-12-08	1/2"	3/4"
PRA-16-04	1/4"	1"
PRA-16-08	1/2"	1"
PRA-16-12	3/4"	1"

Tech Sheet 20885

## Gauge Adaptor



### Male NPT x Female, BSPP

0342	Male Thread	Female Thread
PGA-04-04	1/4"	1/4"
PGA-06-06	3/8"	3/8"
PGA-08-08	1/2"	1/2"

Tech Sheet 20885

# 316 PRECISION INSTRUMENTATION PIPE FITTINGS

stainless  
steel



## Reducing Bushes



### Male x Female, NPT

0342	Male Thread	Female Thread
PRB-02-01	1/8"	1/16"
PRB-04-02	1/4"	1/8"
PRB-06-02	3/8"	1/8"
PRB-06-04	3/8"	1/4"
PRB-08-02	1/2"	1/8"
PRB-08-04	1/2"	1/4"
PRB-08-06	1/2"	3/8"
PRB-12-04	3/4"	1/4"
PRB-12-06	3/4"	3/8"
PRB-12-08	3/4"	1/2"
PRB-16-04	1"	1/4"
PRB-16-06	1"	3/8"
PRB-16-08	1"	1/2"
PRB-16-12	1"	3/4"

Tech Sheet 20885

## Pipe Caps



### NPT

0342	Thread
PCP-02	1/8"
PCP-04	1/4"
PCP-06	3/8"
PCP-08	1/2"
PCP-12	3/4"
PCP-16	1"

Tech Sheet 20885

## Pipe Plugs



### NPT

0342	Thread
PP-01	1/16"
PP-02	1/8"
PP-04	1/4"
PP-06	3/8"
PP-08	1/2"
PP-12	3/4"
PP-16	1"

Tech Sheet 20885

## Equal Elbows



### Female, NPT

0342	Thread
PPFE-02	1/8"
PPFE-04	1/4"
PPFE-06	3/8"
PPFE-08	1/2"
PPFE-12	3/4"
PPFE-16	1"

Tech Sheet 20885



### Male, NPT

0342	Thread
PPME-02	1/8"
PPME-04	1/4"
PPME-06	3/8"
PPME-08	1/2"

Tech Sheet 20885



### Male x Female, NPT

0342	Thread
PSE-01	1/16"
PSE-02	1/8"
PSE-04	1/4"
PSE-06	3/8"
PSE-08	1/2"
PSE-12	3/4"
PSE-16	1"

Tech Sheet 20885

## Equal Tees



### Female, NPT

0342	Thread
PFT-02	1/8"
PFT-04	1/4"
PFT-06	3/8"
PFT-08	1/2"
PFT-12	3/4"
PFT-16	1"

Tech Sheet 20885



### Male, NPT

0342	Thread
PMT-02	1/8"
PMT-04	1/4"
PMT-06	3/8"
PMT-08	1/2"

Tech Sheet 20885

## Branch Tees



### Female x Male, NPT

0342	Thread
PBT-02	1/8"
PBT-04	1/4"
PBT-06	3/8"
PBT-08	1/2"

Tech Sheet 20885

## Equal Crosses



### Female, NPT

0342	Thread
PPC-02	1/8"
PPC-04	1/4"
PPC-06	3/8"
PPC-08	1/2"
PPC-12	3/4"
PPC-16	1"

Tech Sheet 20885

# 10,000 PSI RATED, 316 STAINLESS STEEL ADAPTORS

stainless  
steel



## Male x Male Straight Adaptors



### BSPP x BSPP

0339	Thread	Thread
2G-2G-MM-10K	1/8"	1/8"
2G-4G-MM-10K	1/8"	1/4"
2G-6G-MM-10K	1/8"	3/8"
2G-8G-MM-10K	1/8"	1/2"
2G-12G-MM-10K	1/8"	3/4"
2G-16G-MM-10K	1/8"	1"
4G-4G-MM-10K	1/4"	1/4"
4G-6G-MM-10K	1/4"	3/8"
4G-8G-MM-10K	1/4"	1/2"
4G-12G-MM-10K	1/4"	3/4"
4G-16G-MM-10K	1/4"	1"
6G-6G-MM-10K	3/8"	3/8"
6G-8G-MM-10K	3/8"	1/2"
6G-12G-MM-10K	3/8"	3/4"
6G-16G-MM-10K	3/8"	1"
8G-8G-MM-10K	1/2"	1/2"
8G-12G-MM-10K	1/2"	3/4"
8G-16G-MM-10K	1/2"	1"
12G-12G-MM-10K	3/4"	3/4"
12G-16G-MM-10K	3/4"	1"
16G-16G-MM-10K	1"	1"

Tech Sheet 20887



### BSPP x NPT

0339	Thread	Thread
2G-2N-MM-10K	1/8"	1/8"
2G-4N-MM-10K	1/8"	1/4"
2G-6N-MM-10K	1/8"	3/8"
2G-8N-MM-10K	1/8"	1/2"
2G-12N-MM-10K	1/8"	3/4"
2G-16N-MM-10K	1/8"	1"
4G-2N-MM-10K	1/4"	1/8"
4G-4N-MM-10K	1/4"	1/4"
4G-6N-MM-10K	1/4"	3/8"
4G-8N-MM-10K	1/4"	1/2"
4G-12N-MM-10K	1/4"	3/4"
4G-16N-MM-10K	1/4"	1"
6G-4N-MM-10K	3/8"	1/4"
6G-6N-MM-10K	3/8"	3/8"
6G-8N-MM-10K	3/8"	1/2"
6G-12N-MM-10K	3/8"	3/4"
6G-16N-MM-10K	3/8"	1"
8G-4N-MM-10K	1/2"	1/4"
8G-6N-MM-10K	1/2"	3/8"
8G-8N-MM-10K	1/2"	1/2"
8G-12N-MM-10K	1/2"	3/4"
8G-16N-MM-10K	1/2"	1"
12G-12N-MM-10K	3/4"	3/4"
12G-16N-MM-10K	3/4"	1"
16G-16N-MM-10K	1"	1"

Tech Sheet 20887



### BSPP x JIC

0339	Thread	Thread
2G-4J-MM-10K	1/8"	7/16"
2G-6J-MM-10K	1/8"	9/16"
4G-4J-MM-10K	1/4"	7/16"
4G-6J-MM-10K	1/4"	9/16"
4G-8J-MM-10K	1/4"	3/4"
6G-4J-MM-10K	3/8"	7/16"
6G-6J-MM-10K	3/8"	9/16"
6G-8J-MM-10K	3/8"	3/4"
6G-10J-MM-10K	3/8"	7/8"
6G-12J-MM-10K	3/8"	1.1/16"
8G-4J-MM-10K	1/2"	7/16"
8G-8J-MM-10K	1/2"	3/4"
8G-10J-MM-10K	1/2"	7/8"
8G-12J-MM-10K	1/2"	1.1/16"
8G-16J-MM-10K	1/2"	1.5/16"
12G-8J-MM-10K	3/4"	3/4"
12G-10J-MM-10K	3/4"	7/8"
12G-12J-MM-10K	3/4"	1.1/16"
12G-16J-MM-10K	3/4"	1.5/16"
16G-10J-MM-10K	1"	7/8"
16G-12J-MM-10K	1"	1.1/16"
16G-16J-MM-10K	1"	1.5/16"

Tech Sheet 20887



### NPT x NPT

0339	Thread	Thread
2N-2N-MM-10K	1/8"	1/8"
2N-4N-MM-10K	1/8"	1/4"
4N-4N-MM-10K	1/4"	1/4"
4N-6N-MM-10K	1/4"	3/8"
4N-8N-MM-10K	1/4"	1/2"
6N-2N-MM-10K	3/8"	1/8"
6N-6N-MM-10K	3/8"	3/8"
6N-8N-MM-10K	3/8"	1/2"
8N-2N-MM-10K	1/2"	1/8"
8N-8N-MM-10K	1/2"	1/2"
12N-2N-MM-10K	3/4"	1/8"
12N-4N-MM-10K	3/4"	1/4"
12N-6N-MM-10K	3/4"	3/8"
12N-8N-MM-10K	3/4"	1/2"
12N-12N-MM-10K	3/4"	3/4"
16N-2N-MM-10K	1"	1/8"
16N-4N-MM-10K	1"	1/4"
16N-6N-MM-10K	1"	3/8"
16N-8N-MM-10K	1"	1/2"
16N-12N-MM-10K	1"	3/4"
16N-16N-MM-10K	1"	1"

Tech Sheet 20887

These fittings within the industry are known as 10K fittings which have a 10,000 psi working pressure rating.

All BSPP fittings are 60° coned for connection to hoses.

**Maximum Working Pressure:**  
10,000 psi (690 bar)



### NPT x JIC

0339	Thread	Thread
2N-2J-MM-10K	1/8"	5/16"
2N-4J-MM-10K	1/8"	7/16"
4N-4J-MM-10K	1/4"	7/16"
4N-6J-MM-10K	1/4"	9/16"
4N-8J-MM-10K	1/4"	3/4"
6N-4J-MM-10K	3/8"	7/16"
6N-6J-MM-10K	3/8"	9/16"
6N-8J-MM-10K	3/8"	3/4"
6N-12J-MM-10K	3/8"	1.1/16"
8N-4J-MM-10K	1/2"	7/16"
8N-6J-MM-10K	1/2"	9/16"
8N-8J-MM-10K	1/2"	3/4"
8N-12J-MM-10K	1/2"	1.1/16"
12N-8J-MM-10K	3/4"	3/4"
12N-12J-MM-10K	3/4"	1.1/16"
12N-16J-MM-10K	3/4"	1.5/16"
16N-12J-MM-10K	1"	1.1/16"
16N-16J-MM-10K	1"	1.5/16"

Tech Sheet 20887



### JIC x JIC

0339	Thread	Thread
4J-4J-MM-10K	7/16"	7/16"
4J-6J-MM-10K	7/16"	9/16"
4J-8J-MM-10K	7/16"	3/4"
6J-6J-MM-10K	9/16"	9/16"
6J-8J-MM-10K	9/16"	3/4"
6J-10J-MM-10K	9/16"	7/8"
8J-8J-MM-10K	3/4"	3/4"
8J-10J-MM-10K	3/4"	7/8"
8J-12J-MM-10K	3/4"	1.1/16"
10J-10J-MM-10K	7/8"	7/8"
10J-12J-MM-10K	7/8"	1.1/16"
10J-16J-MM-10K	7/8"	1.5/16"
12J-16J-MM-10K	1.1/16"	1.5/16"
16J-16J-MM-10K	1.5/16"	1.5/16"

Tech Sheet 20887



# 10,000 PSI RATED, 316 STAINLESS STEEL ADAPTORS

stainless steel



These fittings within the industry are known as 10K fittings which have a 10,000 psi working pressure rating. All BSPP fittings are 60° coned for connection to hoses.

**Maximum Working Pressure:**  
10,000 psi (690 bar)

## Male x Female Straight Adaptors



### BSPP x BSPP

0339	Male Thread	Female Thread
2G-2G-MF-A-10K	1/8"	1/8"
2G-4G-MF-A-10K	1/8"	1/4"
2G-6G-MF-A-10K	1/8"	3/8"
2G-8G-MF-A-10K	1/8"	1/2"
2G-12G-MF-A-10K	1/8"	3/4"
4G-4G-MF-A-10K	1/4"	1/4"
4G-6G-MF-A-10K	1/4"	3/8"
4G-8G-MF-A-10K	1/4"	1/2"
4G-12G-MF-A-10K	1/4"	3/4"
4G-16G-MF-A-10K	1/4"	1"
6G-6G-MF-A-10K	3/8"	3/8"
6G-8G-MF-A-10K	3/8"	1/2"
6G-12G-MF-A-10K	3/8"	3/4"
6G-16G-MF-A-10K	3/8"	1"
8G-8G-MF-A-10K	1/2"	1/2"
8G-12G-MF-A-10K	1/2"	3/4"
8G-16G-MF-A-10K	1/2"	1"
12G-12G-MF-A-10K	3/4"	3/4"
12G-16G-MF-A-10K	3/4"	1"
16G-16G-MF-A-10K	1"	1"

Tech Sheet 20887



### NPT x NPT

0339	Male Thread	Female Thread
2N-2N-MF-A-10K	1/8"	1/8"
2N-4N-MF-A-10K	1/8"	1/4"
2N-6N-MF-A-10K	1/8"	3/8"
2N-8N-MF-A-10K	1/8"	1/2"
2N-12N-MF-A-10K	1/8"	3/4"
4N-4N-MF-A-10K	1/4"	1/4"
4N-6N-MF-A-10K	1/4"	3/8"
4N-8N-MF-A-10K	1/4"	1/2"
4N-12N-MF-A-10K	1/4"	3/4"
4N-16N-MF-A-10K	1/4"	1"
6N-6N-MF-A-10K	3/8"	3/8"
6N-8N-MF-A-10K	3/8"	1/2"
6N-12N-MF-A-10K	3/8"	3/4"
6N-16N-MF-A-10K	3/8"	1"
8N-8N-MF-A-10K	1/2"	1/2"
8N-12N-MF-A-10K	1/2"	3/4"
8N-16N-MF-A-10K	1/2"	1"
12N-12N-MF-A-10K	3/4"	3/4"
12N-16N-MF-A-10K	3/4"	1"
16N-16N-MF-A-10K	1"	1"

Tech Sheet 20887



### JIC x NPT

0339	Male Thread	Female Thread
4J-2N-MF-A-10K	7/16"-20	1/8"
4J-4N-MF-A-10K	7/16"-20	1/4"
6J-4N-MF-A-10K	9/16"-18	1/4"
4J-6N-MF-A-10K	7/16"-20	3/8"
6J-6N-MF-A-10K	9/16"-18	3/8"
8J-6N-MF-A-10K	3/4"-16	3/8"
8J-8N-MF-A-10K	9/16"-18	1/2"
10J-8N-MF-A-10K	3/4"-16	1/2"
12J-8N-MF-A-10K	7/8"-14	1/2"
12J-12N-MF-A-10K	3/4"-16	1/2"
16J-16N-MF-A-10K	7/8"-14	1/2"

Tech Sheet 20887



### BSPP x JIC, Swivel

0339	Male Thread	Female Thread
4G-4J-MF-10K	1/4"	7/16"
4G-5J-MF-10K	1/4"	1/2"
4G-6J-MF-10K	1/4"	9/16"
6G-6J-MF-10K	3/8"	9/16"
8G-6J-MF-10K	1/2"	9/16"
6G-8J-MF-10K	3/8"	3/4"
8G-8J-MF-10K	1/2"	3/4"
6G-10J-MF-10K	3/8"	7/8"
8G-10J-MF-10K	1/2"	7/8"
12G-10J-MF-10K	3/4"	7/8"
8G-12J-MF-10K	1/2"	1.1/16"
12G-12J-MF-10K	3/4"	1.1/16"
16G-12J-MF-10K	1"	1.1/16"
12G-16J-MF-10K	3/4"	1.5/16"
16G-16J-MF-10K	1"	1.5/16"

Tech Sheet 20887



### NPT x JIC, Swivel

0339	Male Thread	Female Thread
4N-4J-MF-10K	1/4"	7/16"
6N-6J-MF-10K	3/8"	9/16"
6N-8J-MF-10K	3/8"	3/4"
8N-10J-MF-10K	1/2"	7/8"
8N-12J-MF-10K	1/2"	1.1/16"
12N-12J-MF-10K	3/4"	1.1/16"
12N-14J-MF-10K	3/4"	1.3/16"
12N-16J-MF-10K	3/4"	1.5/16"
16N-16J-MF-10K	1"	1.5/16"

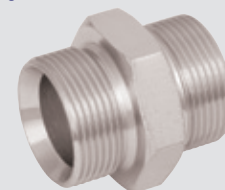
Tech Sheet 20887



### JIC x JIC, Swivel

0339	Male Thread	Female Thread
4J-4J-MF-10K	7/16"	7/16"
4J-6J-MF-10K	7/16"	9/16"
4J-8J-MF-10K	7/16"	3/4"
6J-4J-MF-10K	9/16"	7/16"
6J-6J-MF-10K	9/16"	9/16"
6J-8J-MF-10K	9/16"	3/4"
8J-4J-MF-10K	3/4"	7/16"
8J-6J-MF-10K	3/4"	9/16"
10J-8J-MF-10K	7/8"	3/4"
12J-8J-MF-10K	1.1/16"	3/4"
12J-12J-MF-10K	1.1/16"	1.1/16"
14J-12J-MF-10K	1.3/16"	1.1/16"
16J-12J-MF-10K	1.5/16"	1.1/16"
16J-16J-MF-10K	1.5/16"	1.5/16"

Tech Sheet 20887



For Hydraulic Adaptors  
see pages 82-84

# 10,000 PSI RATED, 316 STAINLESS STEEL ADAPTORS

These fittings within the industry are known as 10K fittings which have a 10,000 psi working pressure rating. All BSPP fittings are 60° coned for connection to hoses.

stainless  
steel



**Maximum Working Pressure:**  
10,000 psi (690 bar)

## Male x Female Straight Reducers



### BSPP

0339	Male Thread	Female Thread
4G-2G-MF-B-10K	1/4"	1/8"
6G-2G-MF-B-10K	3/8"	1/8"
6G-4G-MF-B-10K	3/8"	1/4"
8G-2G-MF-B-10K	1/2"	1/8"
8G-4G-MF-B-10K	1/2"	1/4"
8G-6G-MF-B-10K	1/2"	3/8"
12G-2G-MF-B-10K	3/4"	1/8"
12G-4G-MF-B-10K	3/4"	1/4"
12G-6G-MF-B-10K	3/4"	3/8"
12G-8G-MF-B-10K	3/4"	1/2"
16G-2G-MF-B-10K	1"	1/8"
16G-4G-MF-B-10K	1"	1/4"
16G-6G-MF-B-10K	1"	3/8"
16G-8G-MF-B-10K	1"	1/2"
16G-12G-MF-B-10K	1"	3/4"

Tech Sheet 20887



### NPT

0339	Male Thread	Female Thread
4N-2N-MF-B-10K	1/4"	1/8"
6N-2N-MF-B-10K	3/8"	1/8"
6N-4N-MF-B-10K	3/8"	1/4"
8N-2N-MF-B-10K	1/2"	1/8"
8N-4N-MF-B-10K	1/2"	1/4"
8N-6N-MF-B-10K	1/2"	3/8"
12N-2N-MF-B-10K	3/4"	1/8"
12N-4N-MF-B-10K	3/4"	1/4"
12N-6N-MF-B-10K	3/4"	3/8"
12N-8N-MF-B-10K	3/4"	1/2"
16N-2N-MF-B-10K	1"	1/8"
16N-4N-MF-B-10K	1"	1/4"
16N-6N-MF-B-10K	1"	3/8"
16N-8N-MF-B-10K	1"	1/2"
16N-12N-MF-B-10K	1"	3/4"

Tech Sheet 20887

## Female x Female Straight Adaptors



### Swivel, BSPP

0339	Thread	Thread
4G-4G-FF-10K	1/4"	1/4"
4G-6G-FF-10K	1/4"	3/8"
4G-8G-FF-10K	1/4"	1/2"
6G-6G-FF-10K	3/8"	3/8"
6G-8G-FF-10K	3/8"	1/2"
8G-8G-FF-10K	1/2"	1/2"
12G-12G-FF-10K	3/4"	3/4"
16G-16G-FF-10K	1"	1"

Tech Sheet 20887



### Fixed, NPT

0339	Thread	Thread
2N-2N-FF-10K	1/8"	1/8"
2N-4N-FF-10K	1/8"	1/4"
2N-6N-FF-10K	1/8"	3/8"
2N-8N-FF-10K	1/8"	1/2"
2N-12N-FF-10K	1/8"	3/4"
2N-16N-FF-10K	1/8"	1"
4N-4N-FF-10K	1/4"	1/4"
4N-6N-FF-10K	1/4"	3/8"
4N-8N-FF-10K	1/4"	1/2"
4N-12N-FF-10K	1/4"	3/4"
4N-16N-FF-10K	1/4"	1"
6N-6N-FF-10K	3/8"	3/8"
6N-8N-FF-10K	3/8"	1/2"
6N-12N-FF-10K	3/8"	3/4"
6N-16N-FF-10K	3/8"	1"
8N-8N-FF-10K	1/2"	1/2"
8N-12N-FF-10K	1/2"	3/4"
8N-16N-FF-10K	1/2"	1"
12N-12N-FF-10K	3/4"	3/4"
12N-16N-FF-10K	3/4"	1"
16N-16N-FF-10K	1"	1"

Tech Sheet 20887



### Swivel, JIC

0339	Thread	Thread
4J-4J-FF-10K	7/16"	7/16"
4J-6J-FF-10K	7/16"	9/16"
4J-8J-FF-10K	9/16"	3/4"
6J-6J-FF-10K	9/16"	9/16"
6J-8J-FF-10K	9/16"	3/4"
8J-8J-FF-10K	3/4"	3/4"
12J-12J-FF-10K	1.1/16"	1.1/16"
16J-16J-FF-10K	1.5/16"	1.5/16"

Tech Sheet 20887

## Male x Male Elbows



### BSPP

0339	Thread
2G-E-MM-10K	1/8"
4G-E-MM-10K	1/4"
6G-E-MM-10K	3/8"
8G-E-MM-10K	1/2"
12G-E-MM-10K	3/4"
16G-E-MM-10K	1"

Tech Sheet 20887



### NPT

0339	Thread
2N-E-MM-10K	1/8"
4N-E-MM-10K	1/4"
6N-E-MM-10K	3/8"
8N-E-MM-10K	1/2"
12N-E-MM-10K	3/4"
16N-E-MM-10K	1"

Tech Sheet 20887

# 10,000 PSI RATED, 316 STAINLESS STEEL ADAPTORS

stainless steel



These fittings within the industry are known as 10K fittings which have a 10,000 psi working pressure rating. All BSPP fittings are 60° coned for connection to hoses.



**Maximum Working Pressure:**  
10,000 psi (690 bar)

## Male x Female Elbows



### Swivel, BSPP

0339	Thread
2G-E-MF-10K	1/8"
4G-E-MF-10K	1/4"
6G-E-MF-10K	3/8"
8G-E-MF-10K	1/2"
12G-E-MF-10K	3/4"
16G-E-MF-10K	1"

Tech Sheet 20887



### Fixed, NPT

0339	Thread
2N-E-MF-10K	1/8"
4N-E-MF-10K	1/4"
6N-E-MF-10K	3/8"
8N-E-MF-10K	1/2"
12N-E-MF-10K	3/4"
16N-E-MF-10K	1"

Tech Sheet 20887



### Swivel, JIC

0339	Thread
4J-E-MF-10K	7/16"
6J-E-MF-10K	9/16"
8J-E-MF-10K	3/4"
10J-E-MF-10K	7/8"
12J-E-MF-10K	1.1/16"
16J-E-MF-10K	1.5/16"

Tech Sheet 20887



### NPT x JIC

0339	Male Thread	Female Thread
4N-4J-E-MF-10K	1/4"	7/16"
6N-6J-E-MF-10K	3/8"	9/16"
8N-8J-E-MF-10K	1/2"	3/4"
12N-12J-E-MF-10K	3/4"	1.1/16"

Tech Sheet 20887

## Female x Female Elbows



### BSPP

0339	Thread
2G-E-FF-10K	1/8"
4G-E-FF-10K	1/4"
6G-E-FF-10K	3/8"
8G-E-FF-10K	1/2"
12G-E-FF-10K	3/4"
16G-E-FF-10K	1"

Tech Sheet 20887



### NPT

0339	Thread
2N-E-10K	1/8"
4N-E-10K	1/4"
6N-E-10K	3/8"
8N-E-10K	1/2"
12N-E-10K	3/4"
16N-E-10K	1"

Tech Sheet 20887



### JIC

0339	Thread
2J-E-FF-10K	7/16"
4J-E-FF-10K	9/16"
6J-E-FF-10K	3/4"
8J-E-FF-10K	7/8"
12J-E-FF-10K	1.1/16"
16J-E-FF-10K	1.5/16"

Tech Sheet 20887

## Male x Male Tees



### BSPP

0339	Thread
2G-T-MM-10K	1/8"
4G-T-MM-10K	1/4"
6G-T-MM-10K	3/8"
8G-T-MM-10K	1/2"
12G-T-MM-10K	3/4"
16G-T-MM-10K	1"

Tech Sheet 20887



### NPT

0339	Thread
2N-T-MM-10K	1/8"
4N-T-MM-10K	1/4"
6N-T-MM-10K	3/8"
8N-T-MM-10K	1/2"
12N-T-MM-10K	3/4"
16N-T-MM-10K	1"

Tech Sheet 20887



### JIC

0339	Thread
4J-T-MM-10K	7/16"
5J-T-MM-10K	1/2"
6J-T-MM-10K	9/16"
8J-T-MM-10K	3/4"
10J-T-MM-10K	7/8"
12J-T-MM-10K	1.1/16"
14J-T-MM-10K	1.3/16"
16J-T-MM-10K	1.5/16"

Tech Sheet 20887



stainless steel



For Stainless Steel Gauges  
see pages 414-416

# 10,000 PSI RATED, 316 STAINLESS STEEL ADAPTORS

stainless  
steel



These fittings within the industry are known as 10K fittings which have a 10,000 psi working pressure rating. All BSPP fittings are 60° coned for connection to hoses.



**Maximum Working Pressure:**  
10,000 psi (690 bar)

## Female x Female Tees



### BSPP

0339	Thread
2G-T-FF-10K	1/8"
4G-T-FF-10K	1/4"
6G-T-FF-10K	3/8"
8G-T-FF-10K	1/2"
12G-T-FF-10K	3/4"
16G-T-FF-10K	1"

Tech Sheet 20887



### NPT

0339	Thread
2N-T-10K	1/8"
4N-T-10K	1/4"
6N-T-10K	3/8"
8N-T-10K	1/2"
12N-T-10K	3/4"

Tech Sheet 20887



### JIC

0339	Thread
2J-T-FF-10K	7/16"
4J-T-FF-10K	9/16"
6J-T-FF-10K	3/4"
8J-T-FF-10K	7/8"
12J-T-FF-10K	1.1/16"
16J-T-FF-10K	1.5/16"

Tech Sheet 20887

## Female Equal Cross



### NPT

0339	Thread
2N-X-10K	1/8"
4N-X-10K	1/4"
6N-X-10K	3/8"
8N-X-10K	1/2"
12N-X-10K	3/4"
16N-X-10K	1"

Tech Sheet 20887

## Plugs



### BSPP

0339	Thread
2G-P-10K	1/8"
4G-P-10K	1/4"
6G-P-10K	3/8"
8G-P-10K	1/2"
12G-P-10K	3/4"
16G-P-10K	1"

Tech Sheet 20887



### NPT

0339	Thread
2N-P-10K	1/8"
4N-P-10K	1/4"
6N-P-10K	3/8"
8N-P-10K	1/2"
12N-P-10K	3/4"
16N-P-10K	1"

Tech Sheet 20887



### JIC

0339	Thread
4J-P-10K	7/16"
6J-P-10K	9/16"
8J-P-10K	3/4"
10J-P-10K	7/8"
12J-P-10K	1.1/16"
16J-P-10K	1.5/16"

Tech Sheet 20887

## Caps



### BSPP

0339	Thread
2G-C-10K	1/8"
4G-C-10K	1/4"
6G-C-10K	3/8"
8G-C-10K	1/2"
12G-C-10K	3/4"
16G-C-10K	1"

Tech Sheet 20887



### NPT

0339	Thread
2N-C-10K	1/8"
4N-C-10K	1/4"
6N-C-10K	3/8"
8N-C-10K	1/2"
12N-C-10K	3/4"
16N-C-10K	1"

Tech Sheet 20887



### JIC

0339	Thread
4J-C-10K	7/16"
6J-C-10K	9/16"
8J-C-10K	3/4"
10J-C-10K	7/8"
12J-C-10K	1.1/16"
16J-C-10K	1.5/16"

Tech Sheet 20887



For Glycerine Gauges & Accessories  
see pages 263-264

# 37° JIC STAINLESS STEEL FLARE FITTINGS

stainless  
steel



## Male Stud Couplings



### UNF

0215	Thread	Thread
205BM6	7/16"-20	
205BM8	1/2"-20	
205BM10	9/16"-18	
205BM12	3/4"-16	
205BM16	7/8"-14	
205BM20	1.1/16"-12	
205BM22	1.3/16"-12	
205BM25	1.5/16"-12	
205BM32	1.5/8"-12	

Tech Sheet 20886



### UNF x BSPT

0215	Thread	Thread
210BM6R18	7/16"-20	1/8"
210BM6R14	7/16"-20	1/4"
210BM6R12	7/16"-20	1/2"
210BM8R18	1/2"-20	1/8"
210BM8R14	1/2"-20	1/4"
210BM10R14	9/16"-18	1/4"
210BM10R18	9/16"-18	1/8"
210BM10R38	9/16"-18	3/8"
210BM10R12	9/16"-18	1/2"
210BM12R14	3/4"-16	1/4"
210BM12R38	3/4"-16	3/8"
210BM12R12	3/4"-16	1/2"
210BM16R12	7/8"-14	1/2"
210BM16R34	7/8"-14	3/4"
210BM20R12	1.1/16"-12	1/2"
210BM20R34	1.1/16"-12	3/4"
210BM20R1	1.1/16"-12	1"
210BM22R34	1.3/16"-12	3/4"
210BM25R34	1.5/16"-12	3/4"
210BM25R1	1.5/16"-12	1"
210BM32R1	1.5/8"-12	1"
210BM32R114	1.5/8"-12	1.1/4"
210BM38R112	1.7/8"-12	1.1/2"

Tech Sheet 20886



### UNF x BSPP

0215	Thread	Thread
210SM6G18	7/16"-20	1/8"
210SM6G14	7/16"-20	1/4"
210SM6G38	7/16"-20	3/8"
210SM6G12	7/16"-20	1/2"
210SM8G18	1/2"-20	1/8"
210SM8G14	1/2"-20	1/4"
210SM8G38	1/2"-20	3/8"
210SM10G18	9/16"-18	1/8"
210SM10G14	9/16"-18	1/4"
210SM10G38	9/16"-18	3/8"
210SM10G12	9/16"-18	1/2"
210SM12G14	3/4"-16	1/4"
210SM12G38	3/4"-16	3/8"
210SM12G12	3/4"-16	1/2"
210SM12G34	3/4"-16	3/4"
210SM16G38	7/8"-14	3/8"
210SM16G12	7/8"-14	1/2"
210SM16G34	7/8"-14	3/4"
210SM20G12	1.1/16"-12	1/2"
210SM20G34	1.1/16"-12	3/4"
210SM20G1	1.1/16"-12	1"
210SM22G34	1.3/16"-12	3/4"
210SM25G34	1.5/16"-12	3/4"
210SM25G1	1.5/16"-12	1"
210SM25G114	1.5/16"-12	1.1/4"
210SM32G1	1.5/8"-12	1"
210SM32G114	1.5/8"-12	1.1/4"
210SM38G114	1.7/8"-12	1.1/4"
210SM38G112	1.7/8"-12	1.1/2"

Tech Sheet 20886



### UNF x NPT

0215	Thread	Thread
214BM6N18	7/16"-20	1/8"
214BM6N14	7/16"-20	1/4"
214BM8N18	1/2"-20	1/8"
214BM8N14	1/2"-20	1/4"
214BM10N18	9/16"-18	1/8"
214BM10N14	9/16"-18	1/4"
214BM10N38	9/16"-18	3/8"
214BM10N12	9/16"-18	1/2"
214BM12N14	3/4"-16	1/4"
214BM12N38	3/4"-16	3/8"
214BM12N12	3/4"-16	1/2"
214BM12N34	3/4"-16	3/4"
214BM16N12	7/8"-14	1/2"
214BM20N12	1.1/16"-12	1/2"
214BM20N34	1.1/16"-12	3/4"
214BM20N1	1.1/16"-12	1"
214BM25N34	1.5/16"-12	3/4"
214BM25N1	1.5/16"-12	1"
214BM32N1	1.5/8"-12	1"
214BM32N114	1.5/8"-12	1.1/4"
214BM38N114	1.7/8"-12	1.1/4"
214BM38N112	1.7/8"-12	1.1/2"

Tech Sheet 20886

stainless  
steel



For 316 Stainless Steel Tubing  
see page 183

For Flare Seals see page 111

# 37° JIC STAINLESS STEEL FLARE FITTINGS

stainless  
steel



## Female Stud Couplings



### Male UNF x Female BSPP

0215	Male Thread	Female Thread
230BM6G18	7/16"-20	1/8"
230BM6G14	7/16"-20	1/4"
230BM6G12	7/16"-20	1/2"
230BM8G14	1/2"-20	1/4"
230BM10G18	9/16"-18	1/8"
230BM10G14	9/16"-18	1/4"
230BM10G38	9/16"-18	3/8"
230BM10G12	9/16"-18	1/2"
230BM12G14	3/4"-16	1/4"
230BM12G38	3/4"-16	3/8"
230BM12G12	3/4"-16	1/2"
230BM12G34	3/4"-16	3/4"
230BM16G38	7/8"-14	3/8"
230BM16G12	7/8"-14	1/2"
230BM16G34	7/8"-14	3/4"
230BM18G1	1.1/16"-12	1"
230BM22G34	1.3/16"-12	3/4"
230BM25G34	1.5/16"-12	3/4"
230BM25G1	1.5/16"-12	1"
230BM32G1	1.5/8"-12	1"
230BM32G114	1.5/8"-12	1.1/4"
230BM38G114	1.7/8"-12	1.1/2"
230BM38G112	1.7/8"-12	1.1/2"

Tech Sheet 20886

### Male UNF x Female NPT

0215	Male Thread	Female Thread
232BM6N18	7/16"-20	1/8"
232BM6N14	7/16"-20	1/4"
232BM8N14	1/2"-20	1/4"
232BM10N14	9/16"-18	1/4"
232BM10N38	9/16"-18	3/8"
232BM12N12	3/4"-16	1/2"
232BM20N12	1.1/16"-12	1/2"
232BM20N34	1.1/16"-12	3/4"
232BM25N1	1.5/16"-12	1"
232BM32N114	1.5/8"-12	1.1/4"
232BM38N112	1.7/8"-12	1.1/2"

Tech Sheet 20886

### Male UNF x Female BSPT

0215	Male Thread	Female Thread
231M6R18	7/16"-20	1/8"
231M6R14	7/16"-20	1/4"
231M6R12	7/16"-20	1/2"
231M8R18	1/2"-20	1/8"
231M8R14	1/2"-20	1/4"
231M10R18	9/16"-18	1/8"
231M10R14	9/16"-18	1/4"
231M10R38	9/16"-18	3/8"
231M10R12	9/16"-18	1/2"
231M12R14	3/4"-16	1/4"
231M12R38	3/4"-16	3/8"
231M12R12	3/4"-16	1/2"
231M12R34	3/4"-16	3/4"
231M16R38	7/8"-14	3/8"
231M16R12	7/8"-14	1/2"
231M16R34	7/8"-14	3/4"
231M18R34	1.1/16"-12	3/4"
231M18R1	1.1/16"-12	1"
231M22R34	1.3/16"-12	3/4"
231M25R34	1.5/16"-12	3/4"
231M25R1	1.5/16"-12	1"
231M32R1	1.5/8"-12	1"
231M32R114	1.5/8"-12	1.1/4"
231M38R114	1.7/8"-12	1.1/4"
231M38R112	1.7/8"-12	1.1/2"

Tech Sheet 20886

## Female Swivel Connectors



### Male UNF x Female UNF

0215	Male Thread	Female Thread
273M6U716	7/16"-20	7/16"-20
273M8U716	1/2"-20	7/16"-20
273M8U12	1/2"-20	1/2"-20
273M10U716	9/16"-18	7/16"-20
273M10U916	9/16"-18	9/16"-18
273M12U916	3/4"-16	9/16"-18
273M16U34	7/8"-14	3/4"-16
273M18U34	1.1/16"-12	3/4"-16
273M18U1116	1.1/16"-12	1.1/16"-12
273M22U1116	1.3/16"-12	1.1/16"-12
273M25U1116	1.5/16"-12	1.1/16"-12
273M25U1516	1.5/16"-12	1.5/16"-12

Tech Sheet 20886

### Male BSPP x Female UNF

0215	Male Thread	Female Thread
273M6G18	1/8"	7/16"-20
273M8G18	1/8"	1/2"-20
273M8G14	1/4"	1/2"-20
273M10G14	1/4"	9/16"-18
273M10G38	3/8"	9/16"-18
273M12G38	3/8"	3/4"-16
273M16G12	1/2"	7/8"-14
273M20G34	3/4"	1.1/16"-12
273M22G34	3/4"	1.3/16"-12
273M25G1	1"	1.5/16"-12
273M32G114	1.1/4"	1.5/8"-12
273M38G112	1.1/2"	1.7/8"-12

Tech Sheet 20886

### Male NPT x Female UNF

0215	Male Thread	Female Thread
276M6N18	1/8"	7/16"-20
276M8N18	1/8"	1/2"-20
276M6N14	1/4"	7/16"-20
276M8N14	1/4"	1/2"-20
276M10N14	1/4"	9/16"-18
276M10N38	3/8"	9/16"-18
276M12N38	3/8"	3/4"-16
276M16N12	1/2"	7/8"-14
276M20N12	1/2"	1.1/16"-12
276M20N34	3/4"	1.1/16"-12
276M22N34	3/4"	1.3/16"-12
276M25N34	3/4"	1.5/16"-12
276M25N1	1"	1.5/16"-12
276M32N114	1.1/4"	1.5/8"-12
276M38N112	1.1/2"	1.7/8"-12

Tech Sheet 20886

### Male BSPT x Female UNF

0215	Male Thread	Female Thread
273M6R18	1/8"	7/16"-20
273M8R14	1/4"	1/2"-20
273M10R14	1/4"	9/16"-18
273M12R14	1/4"	3/4"-16
273M12R38	3/8"	3/4"-16
273M16R12	1/2"	7/8"-14
273M20R12	1/2"	1.1/16"-12
273M20R34	3/4"	1.1/16"-12
273M22R34	3/4"	1.3/16"-12
273M25R34	3/4"	1.5/16"-12
273M25R1	1"	1.5/16"-12
273M32R114	1.1/4"	1.5/8"-12
273M38R112	1.1/2"	1.7/8"-12

Tech Sheet 20886

# 37° JIC STAINLESS STEEL FLARE FITTINGS

stainless  
steel



## Bulkhead Unions



### Bulkhead complete with Locknut, UNF

0215	Thread
204M6U716	7/16"-20
204M8U12	1/2"-20
204M10U916	9/16"-18
204M12U34	3/4"-16
204M16U78	7/8"-14
204M18U1116	1.1/16"-12
204M22U1316	1.3/16"-12
204M25U1516	1.5/16"-12
204M32U158	1.5/8"-12
204M38U178	1.7/8"-12

Tech Sheet 20886

### Bulkhead Locknuts

0215	Thread
199M6U716	7/16"-20
199M8U12	1/2"-20
199M10U916	9/16"-18
199M12U34	3/4"-16
199M16U78	7/8"-14
199M18U1116	1.1/16"-12
199M22U1316	1.3/16"-12
199M25U1516	1.5/16"-12
199M32U158	1.5/8"-12
199M38U178	1.7/8"-12

Tech Sheet 20886

## Fixed Elbows



### UNF

0215	Thread
206BM6	7/16"-20
206BM8	1/2"-20
206BM12	3/4"-16
206BM20	1.1/16"-12
206BM22	1.3/16"-12
206BM25	1.5/16"-12
206BM32	1.5/8"-12
206BM38	1.7/8"-12

Tech Sheet 20886

### UNF Male x BSPT Male

0215	Thread	Thread
206M6R18	7/16"-20	1/8"
206M6R14	7/16"-20	1/4"
206M6R12	7/16"-20	1/2"
206M8R18	1/2"-20	1/8"
206M8R14	1/2"-20	1/4"
206M10R18	9/16"-18	1/8"
206M10R14	9/16"-18	1/4"
206M10R38	9/16"-18	3/8"
206M10R12	9/16"-18	1/2"
206M12R14	3/4"-16	1/4"
206M12R38	3/4"-16	3/8"
206M12R12	3/4"-16	1/2"
206M12R34	3/4"-16	3/4"
206M16R38	7/8"-14	3/8"
206M16R12	7/8"-14	1/2"
206M16R34	7/8"-14	3/4"
206M18R34	1.1/16"-12	3/4"
206M18R1	1.1/16"-12	1"
206M22R34	1.3/16"-12	3/4"
206M25R34	1.5/16"-12	3/4"
206M25R1	1.5/16"-12	1"
206M32R1	1.5/8"-12	1"
206M32R114	1.5/8"-12	1.1/4"
206M38R114	1.7/8"-12	1.1/4"
206M38R112	1.7/8"-12	1.1/2"

Tech Sheet 20886



### UNF Male x 45° NPT Male

0215	Thread	Thread
285M6N18	7/16"-20	1/8"
285M8N14	1/2"-20	1/8"
285M10N12	9/16"-18	1/2"
285M12N18	3/4"-16	3/8"
285M16N14	7/8"-14	1/2"
285M18N18	1.1/16"-12	3/4"
285M22N14	1.3/16"-12	3/4"
285M25N38	1.5/16"-12	1"
285M32N12	1.5/8"-12	1.1/4"
285M38N14	1.7/8"-12	1.1/2"

Tech Sheet 20886



For Hydraulic Oil  
see page 283

For Flaretite Seals see page 111

# 37° JIC STAINLESS STEEL FLARE FITTINGS

stainless  
steel



## Swivel Elbows



### Male x Female, UNF

0215	Thread
275M6U716	7/16"-20
275M8U12	1/2"-20
275M10U916	9/16"-18
275M12U34	3/4"-16
275M16U78	7/8"-14
275M18U1116	1.1/16"-12
275M22U1316	1.3/16"-12
275M25U1516	1.5/16"-12
275M32U158	1.5/8"-12
275M38U178	1.7/8"-12

Tech Sheet 20886



### Equal Female, UNF

0215	Thread
265M6U716	7/16"-20
265M8U12	1/2"-20
265M10U916	9/16"-18
265M12U34	3/4"-16
265M16U78	7/8"-14
265M18U1116	1.1/16"-12
265M22U1316	1.3/16"-12
265M25U1516	1.5/16"-12
265M32U158	1.5/8"-12
265M38U178	1.7/8"-12

Tech Sheet 20886



### NPT Male x UNF Female

0215	Thread	Thread
275M6N18	7/16"-20	1/8"
275M6N14	7/16"-20	1/4"
275M6N12	7/16"-20	1/2"
275M8N18	1/2"-20	1/8"
275M8N14	1/2"-20	1/4"
275M10N18	9/16"-18	1/8"
275M10N14	9/16"-18	1/4"
275M10N38	9/16"-18	3/8"
275M10N12	9/16"-18	1/2"
275M12N14	3/4"-16	1/4"
275M12N38	3/4"-16	3/8"
275M12N12	3/4"-16	1/2"
275M12N34	3/4"-16	3/4"
275M16N38	7/8"-14	3/8"
275M16N12	7/8"-14	1/2"
275M16N34	7/8"-14	3/4"
275M18N34	1.1/16"-12	3/4"
275M18N1	1.1/16"-12	1"
275M22N34	1.3/16"-12	3/4"
275M25N34	1.5/16"-12	3/4"
275M25N1	1.5/16"-12	1"
275M32N1	1.5/8"-12	1"
275M32N114	1.5/8"-12	1.1/4"
275M38N114	1.7/8"-12	1.1/4"
275M38N112	1.7/8"-12	1.1/2"

Tech Sheet 20886

## 90° Position Elbows



### UNF x BSPP

0215	Thread	Thread
216SM6G18	7/16"-20	1/8"
216SM6G14	7/16"-20	1/4"
216SM8G18	1/2"-20	1/8"
216SM10G38	9/16"-18	3/8"
216SM12G14	3/4"-16	1/4"
216SM12G38	3/4"-16	3/8"
216SM12G12	3/4"-16	1/2"
216SM12G34	3/4"-16	3/4"
216SM16G14	7/8"-14	1/4"
216SM16G38	7/8"-14	3/8"
216SM16G12	7/8"-14	1/2"
216SM16G34	7/8"-14	3/4"
216SM20G12	1.1/16"-12	1/2"
216SM20G34	1.1/16"-12	3/4"
216SM22G12	1.3/16"-12	1/2"
216SM22G34	1.3/16"-12	3/4"
216SM22G1	1.3/16"-12	1/2"
216SM25G12	1.5/16"-12	1/2"
216SM25G1	1.5/16"-12	1"
216SM32G1	1.5/8"-12	1"
216SM38G112	1.7/8"-12	1.1/2"

Tech Sheet 20886

## Fixed Tees



### UNF

0215	Thread
207BM6	7/16"-20
207BM8	1/2"-20
207BM10	9/16"-18
207BM12	3/4"-16
207BM16	7/8"-14
207BM20	1.1/16"-12
207BM22	1.3/16"-12
207BM25	1.5/16"-12
207BM32	1.5/8"-12

Tech Sheet 20886



### UNF Male x NPT Male Branch

0215	Thread	Thread
307M6N18	7/16"-20	1/8"
307M6N14	7/16"-20	1/4"
307M6N12	7/16"-20	1/2"
307M8N18	1/2"-20	1/8"
307M8N14	1/2"-20	1/4"
307M10N18	9/16"-18	1/8"
307M10N14	9/16"-18	1/4"
307M10N38	9/16"-18	3/8"
307M10N12	9/16"-18	1/2"
307M12N14	3/4"-16	1/4"
307M12N38	3/4"-16	3/8"
307M12N12	3/4"-16	1/2"
307M12N34	3/4"-16	3/4"
307M16N38	7/8"-14	3/8"
307M16N12	7/8"-14	1/2"
307M16N34	7/8"-14	3/4"
307M18N34	1.1/16"-12	3/4"
307M18N1	1.1/16"-12	1"
307M22N34	1.3/16"-12	3/4"
307M25N34	1.5/16"-12	3/4"
307M25N1	1.5/16"-12	1"
307M32N1	1.5/8"-12	1"
307M32N114	1.5/8"-12	1.1/4"
307M38N114	1.7/8"-12	1.1/4"
307M38N112	1.7/8"-12	1.1/2"

Tech Sheet 20886



# 37° JIC STAINLESS STEEL FLARE FITTINGS

stainless  
steel



## Fixed Tees



### UNF Male x NPT Male Run

0215	Thread	Thread
309M6N18	7/16"-20	1/8"
309M6N14	7/16"-20	1/4"
309M6N12	7/16"-20	1/2"
309M8N18	1/2"-20	1/8"
309M8N14	1/2"-20	1/4"
309M10N18	9/16"-18	1/8"
309M10N14	9/16"-18	1/4"
309M10N38	9/16"-18	3/8"
309M10N12	9/16"-18	1/2"
309M12N14	3/4"-16	1/4"
309M12N38	3/4"-16	3/8"
309M12N12	3/4"-16	1/2"
309M12N34	3/4"-16	3/4"
309M16N38	7/8"-14	3/8"
309M16N12	7/8"-14	1/2"
309M16N34	7/8"-14	3/4"
309M18N34	1.1/16"-12	3/4"
309M18N1	1.1/16"-12	1"
309M22N34	1.3/16"-12	3/4"
309M25N34	1.5/16"-12	3/4"
309M25N1	1.5/16"-12	1"
309M32N1	1.5/8"-12	1"
309M32N114	1.5/8"-12	1.1/4"
309M38N114	1.7/8"-12	1.1/4"
309M38N112	1.7/8"-12	1.1/2"

Tech Sheet 20886

## Swivel Tees



### Female Swivel, UNF

0215	Thread
310M6U716	7/16"-20
310M8U12	1/2"-20
310M10U916	9/16"-18
310M12U34	3/4"-16
310M16U78	7/8"-14
310M18U1116	1.1/16"-12
310M22U1316	1.3/16"-12
310M25U1516	1.5/16"-12
310M32U158	1.5/8"-12
310M38U178	1.7/8"-12

Tech Sheet 20886



### Female Swivel Branch, UNF

0215	Thread
314M6U716	7/16"-20
314M8U12	1/2"-20
314M10U916	9/16"-18
314M12U34	3/4"-16
314M16U78	7/8"-14
314M18U1116	1.1/16"-12
314M22U1316	1.3/16"-12
314M25U1516	1.5/16"-12
314M32U158	1.5/8"-12
314M38U178	1.7/8"-12

Tech Sheet 20886



### Female Swivel Run, UNF

0215	Thread
312M6U716	7/16"-20
312M8U12	1/2"-20
312M10U916	9/16"-18
312M12U34	3/4"-16
312M16U78	7/8"-14
312M18U1116	1.1/16"-12
312M22U1316	1.3/16"-12
312M25U1516	1.5/16"-12
312M32U158	1.5/8"-12
312M38U178	1.7/8"-12

Tech Sheet 20886

## Position Tees



### UNF Male x BSPP Male

0215	Thread	Thread
308M6G18	7/16"-20	1/8"
308M6G14	7/16"-20	1/4"
308M8G18	1/2"-20	1/8"
308M8G14	1/2"-20	1/4"
308M10G14	9/16"-18	1/4"
308M10G38	9/16"-18	3/8"
308M12G14	3/4"-16	1/4"
308M12G38	3/4"-16	3/8"
308M12G12	3/4"-16	1/2"
308M12G34	3/4"-16	3/4"
308M16G14	7/8"-14	1/4"
308M16G38	7/8"-14	3/8"
308M16G12	7/8"-14	1/2"
308M16G34	7/8"-14	3/4"
308M20G12	1.1/16"-12	1/2"
308M20G34	1.1/16"-12	3/4"
308M22G34	1.3/16"-12	1/2"
308M22G1	1.3/16"-12	3/4"
308M22G12	1.3/16"-12	1"
308M25G34	1.5/16"-12	1/2"
308M25G1	1.5/16"-12	3/4"
308M32G1	1.5/8"-12	1"
308M32G114	1.5/8"-12	1"
308M38G114	1.7/8"-12	1.1/4"
308M38G112	1.7/8"-12	1.1/2"

Tech Sheet 20886

## Cross



### Male, UNF

0215	Thread
320M6U716	7/16"-20
320M8U12	1/2"-20
320M10U916	9/16"-18
320M12U34	3/4"-16
320M16U78	7/8"-14
320M18U1116	1.1/16"-12
320M22U1316	1.3/16"-12
320M25U1516	1.5/16"-12
320M32U158	1.5/8"-12
320M38U178	1.7/8"-12

Tech Sheet 20886

For Flare Seals see page 111

# 37° JIC STAINLESS STEEL FLARE FITTINGS

stainless  
steel



## Swivel Caps



### UNF

0215	Thread
289M6U716	7/16"-20
289M8U12	1/2"-20
289M10U916	9/16"-18
289M12U34	3/4"-16
289M16U78	7/8"-14
289M22U1316	1.3/16"-12
289M25U1516	1.5/16"-12
289M32U158	1.5/8"-12
289M38U178	1.7/8"-12

Tech Sheet 20886

## Blanking Plugs



### UNF

0215	Thread
299M6	7/16"-20
299M8	1/2"-20
299M10	9/16"-18
299M12	3/4"-16
299M16	7/8"-14
299M20	1.1/16"-12
299M22	1.3/16"-12
299M25	1.5/16"-12
299M32	1.5/8"-12
299M38	1.7/8"-12

Tech Sheet 20886

## Reducing Adaptors



### UNF Tube x UNF Male

0215	OD mm	OD mm	Male Thread
303M6U716	10	6	7/16"-20
303M6U34	12	6	3/4"-16
303M10U34	12	10	3/4"-16
303M6U78	16	6	7/8"-14
303M10U78	16	10	7/8"-14
303M6U1116	18	6	1.1/16"-12
303M10U1116	18	10	1.1/16"-12
303M12U1116	18	12	1.1/16"-12
303M10U1316	22	10	1.3/16"-12
303M16U1316	22	16	1.3/16"-12
303M6U1516	25	6	1.5/16"-12
303M10U1516	25	10	1.5/16"-12
303M12U1516	25	12	1.5/16"-12
303M16U1516	25	16	1.5/16"-12
303M18U1516	25	18	1.5/16"-12
303M18U158	32	18	1.5/8"-12
303M25U158	32	25	1.5/8"-12
303M12U178	38	12	1.7/8"-12
303M18U178	38	18	1.7/8"-12
303M25U178	38	25	1.7/8"-12

Tech Sheet 20886

## Tube Nuts



### UNF

0215	Thread
201M6U716	7/16"-20
201M8U12	1/2"-20
201M10U916	9/16"-18
201M12U34	3/4"-16
201M16U78	7/8"-14
201M20U1116	1.1/16"-12
201M22U1316	1.3/16"-12
201M25U1516	1.5/16"-12
201M32U158	1.5/8"-12
201M38U178	1.7/8"-12

Tech Sheet 20886

## Flare Sleeves



### Metric

0215	OD mm
203M6	6
203M8	8
203M10	10
203M12	12
203M14	14
203M15	15
203M16Z58	16
203M18	18
203M20	20
203M25	25
203M30	30
203M32	32
203M38Z112	38

Tech Sheet 20886

### Imperial

0215	OD
203Z14	1/4"
203Z516	5/16"
203Z38	3/8"
203Z12	1/2"
203M15Z58	5/8"
203Z34	3/4"
203Z1	1"

Tech Sheet 20886

# SAE FLANGES

havIT



- Closed Flanges
- Split Flange Half
- 90° Threaded Flanges
- Threaded Flanges
- Threaded Flanges-Companion (Counter)
- Socket Weld Flanges
- Socket Weld Flanges 90°
- Butt Weld Flanges
- Butt Weld Flanges 90°
- Butt Weld Flanges-Companion (Counter)
- Socket Weld Coupling Set
- Bolts & Spring Washers
- O-Rings

# SAE FLANGES

## Closed Flanges

Bolts, washers and O-Rings are not included and must be purchased separately  
Please see page 108



### 3000 psi

0300	Flange Size	Bolt Type Metric
AFC080	1/2"	M8 x 30
AFC100	3/4"	M10 x 35
AFC102	1"	M10 x 35
AFC104	1.1/4"	M10 x 40
AFC106	1.1/2"	M12 x 45
AFC108	2"	M12 x 45
AFC110	2.1/2"	M12 x 45
AFC112	3"	M16 x 50
AFC114	3.1/2"	M16 x 50
AFC116	4"	M16 x 50
AFC118	5"	M16 x 50

Tech Sheet 1625

### 6000 psi

0300	Flange Size	Bolt Type Metric
AFC401	1/2"	M8 x 30
AFC402	3/4"	M10 x 35
AFC403	1"	M12 x 45
AFC404	1.1/4"	M14 x 45
AFC405	1.1/2"	M16 x 50
AFC406	2"	M20 x 65
AFC407	2.1/2"	M24 x 80

Tech Sheet 1625

## Split Flange Half

Bolts, washers and O-Rings are not included and must be purchased separately

Please see page 108

### 3000 psi

0300	Flange Size	Bolt Type Metric	Bolt Type UNC
FH3001	1/2"	M8 x 25	5/16" x 1.1/4"
FH3002	3/4"	M10 x 30	3/8" x 1.1/4"
FH3003	1"	M10 x 30	3/8" x 1.1/4"
FH3004	1.1/4"	M10 x 35	7/16" x 1.1/2"
FH3005	1.1/2"	M12 x 35	1/2" x 1.1/2"
FH3006	2"	M12 x 35	1/2" x 1.1/2"
FH3007	2.1/2"	M12 x 40	1/2" x 1.1/2"
FH3011	5"	M16 x 50	5/8" x 2"

Tech Sheet 1626

### 6000 psi

0300	Flange Size	Bolt Type Metric	Bolt Type UNC
FH6001	1/2"	M8 x 30	5/16" x 1.1/4"
FH6002	3/4"	M10 x 35	3/8" x 1.1/2"
FH6003	1"	M12 x 45	-
FH6013	1"	-	7/16" x 1.1/4"
FH6004	1.1/4"	M14 x 50	-
FH6044	1.1/4"	-	1/2" x 1.3/4"
FH6005	1.1/2"	M16 x 55	5/8" x 2"
FH6006	2"	M20 x 65	3/4" x 2.1/2"

Tech Sheet 1626

# havIT

## 90° Threaded Flanges

Bolts, washers and O-Rings are not included and must be purchased separately  
Please see page 108



### 3000 psi, BSPP

0300	Flange Size	Thread	Bolt Typ Metric	Bolt Type UNC
AFS080/90G-038	1/2"	3/8"	M8 x 30	5/16" x 1.1/4"
AFS100/90G	3/4"	3/4"	M10 x 35	3/8" x 1.1/2"
AFS102/90G	1"	1"	M10 x 35	3/8" x 1.1/2"
AFS104/90G	1.1/4"	1.1/4"	M10 x 35	3/8" x 1.1/2"
AFS106/90G	1.1/2"	1.1/2"	M12 x 45	1/2" x 1.3/4"
AFS/90G	2"	2"	M12 x 45	1/2" x 1.3/4"

Tech Sheet 1628

### 6000 psi, BSPP

0300	Flange Size	Thread	Bolt Type Metric	Bolt Type UNC
AFS401/90G-038	1/2"	3/8"	M8 x 30	5/16" x 1.1/4"
AFS401/90G-012	1/2"	1/2"	M8 x 30	5/16" x 1.1/4"
AFS402/90G	3/4"	3/4"	M10 x 35	3/8" x 1.1/2"
AFS403/90G	1"	1"	M12 x 45	7/16" x 1.3/4"
AFS405/90G	1.1/2"	1.1/2"	M16 x 50	5/8" x 2"
AFS406/90G	2"	2"	M20 x 110	-

Tech Sheet 1628

**Code Information: AFS = Flange with O-Ring Groove  
GFS = Flange with Flat Face**



**For Hydraulic Hose Connectors  
see pages 17-24**

# SAE FLANGES

## Threaded Flanges

Bolts, washers and O-Rings are not included and must be purchased separately  
Please see page 108



### 3000 psi, BSPP

0300	Flange Size	Thread	Bolt Type Metric	Bolt Type UNC
AFS080G-038	1/2"	3/8"	M8 x 30	5/16" x 1.1/4"
AFS080G	1/2"	1/2"	M8 x 30	5/16" x 1.1/4"
AFS100G-012	3/4"	1/2"	M10 x 35	3/8" x 1.1/2"
AFS100G	3/4"	3/4"	M10 x 35	3/8" x 1.1/2"
AFS102G-012	1"	1/2"	M10 x 35	3/8" x 1.1/2"
AFS102G-034	1"	3/4"	M10 x 35	3/8" x 1.1/2"
AFS102G	1"	1"	M10 x 35	3/8" x 1.1/2"
AFS104G-034	1.1/4"	3/4"	M10 x 40	7/16" x 1.1/2"
AFS104G-100	1.1/4"	1"	M10 x 40	7/16" x 1.3/4"
AFS104G	1.1/4"	1.1/4"	M10 x 40	7/16" x 1.1/2"
AFS106G-034	1.1/2"	3/4"	M12 x 45	1/2" x 1.3/4"
AFS106G-100	1.1/2"	1"	M12 x 45	1/2" x 1.3/4"
AFS106G-114	1.1/2"	1.1/4"	M12 x 45	1/2" x 1.3/4"
AFS106G	1.1/2"	1.1/2"	M12 x 45	1/2" x 1.3/4"
AFS108G-100	2"	1"	M12 x 45	1/2" x 1.3/4"
AFS108G-114	2"	1.1/4"	M12 x 45	1/2" x 1.3/4"
AFS108G-112	2"	1.1/2"	M12 x 45	1/2" x 1.3/4"
AFS108G	2"	2"	M12 x 45	1/2" x 1.3/4"
AFS110G-200	2.1/2"	2"	M12 x 45	1/2" x 1.3/4"
AFS110G	2.1/2"	2.1/2"	M12 x 45	1/2" x 1.3/4"
AFS112G-212	3"	2.1/2"	M16 x 50	5/8" x 2"
AFS112G	3"	3"	M16 x 50	5/8" x 2"
AFS114G-300	3.1/2"	3"	M16 x 50	5/8" x 2"
AFS114G	3.1/2"	3.1/2"	M16 x 50	5/8" x 2"
AFS116G-312	4"	3.1/2"	M16 x 50	5/8" x 2"
AFS116G	4"	4"	M16 x 50	5/8" x 2"

Tech Sheet 1629

### 6000 psi, BSPP

0300	Flange Size	Thread	Bolt Type Metric	Bolt Type UNC
AFS401G-038	1/2"	3/8"	M8 x 30	5/16" x 1.1/4"
AFS401G-012	1/2"	1/2"	M8 x 30	5/16" x 1.1/4"
AFS402G-012	3/4"	1/2"	M10 x 35	3/8" x 1.1/2"
AFS402G	3/4"	3/4"	M10 x 35	3/8" x 1.1/2"
AFS403G-034	1"	3/4"	M12 x 45	7/16" x 1.3/4"
AFS403G	1"	1"	M12 x 45	7/16" x 1.3/4"
AFS404G-100	1.1/4"	1"	M14 x 45	1/2" x 1.3/4"
AFS404G	1.1/4"	1.1/4"	M14 x 45	1/2" x 1.3/4"
AFS405G-114	1.1/2"	1.1/4"	M16 x 50	5/8" x 2"
AFS405G	1.1/2"	1.1/2"	M16 x 50	5/8" x 2"
AFS406G-112	2"	1.1/2"	M20 x 65	3/4" x 2.1/2"
AFS406G	2"	2"	M20 x 65	3/4" x 2.1/2"

Tech Sheet 1629

### 3000 psi, NPT

0300	Flange Size	Thread	Bolt Type Metric	Bolt Type UNC
AFS080N-038	1/2"	3/8"	M8 x 30	5/16" x 1.1/4"
AFS080N	1/2"	1/2"	M8 x 30	5/16" x 1.1/4"
AFS100N-012	3/4"	1/2"	M10 x 35	3/8" x 1.1/2"
AFS102N-034	1"	3/4"	M10 x 35	3/8" x 1.1/2"
AFS102N	1"	1"	M10 x 35	3/8" x 1.1/2"
AFS104N-100	1.1/4"	1"	M10 x 40	7/16" x 1.1/2"
AFS104N	1.1/4"	1.1/4"	M10 x 40	7/16" x 1.1/2"
AFS106N-114	1.1/2"	1.1/4"	M12 x 45	1/2" x 1.3/4"
AFS106N	1.1/2"	1.1/2"	M12 x 45	1/2" x 1.3/4"
AFS108N-112	2"	1.1/2"	M12 x 45	1/2" x 1.3/4"
AFS108N	2"	2"	M12 x 45	1/2" x 1.3/4"
AFS110N	2.1/2"	2.1/2"	M12 x 45	1/2" x 1.3/4"
AFS112N	3"	3"	M16 x 50	5/8" x 2"
AFS114N	3.1/2"	3.1/2"	M16 x 50	5/8" x 2"
AFS116N	4"	4"	M16 x 50	5/8" x 2"

Tech Sheet 1629

### 6000 psi, NPT

0300	Flange Size	Thread	Bolt Type Metric	Bolt Type UNC
AFS401N-038	1/2"	3/8"	M8 x 30	5/16" x 1.1/4"
AFS401N-012	1/2"	1/2"	M8 x 30	5/16" x 1.1/4"
AFS402N-012	3/4"	1/2"	M10 x 35	3/8" x 1.1/2"
AFS402N	3/4"	3/4"	M10 x 35	3/8" x 1.1/2"
AFS403N-034	1"	3/4"	M12 x 45	7/16" x 1.3/4"
AFS403N	1"	1"	M12 x 45	7/16" x 1.3/4"
AFS404N-100	1.1/4"	1"	M14 x 45	1/2" x 1.3/4"
AFS405N-114	1.1/2"	1.1/4"	M16 x 50	5/8" x 2"
AFS405N	1.1/2"	1.1/2"	M16 x 50	5/8" x 2"
AFS406N-112	2"	1.1/2"	M20 x 65	3/4" x 2.1/2"
AFS406N	2"	2"	M20 x 65	3/4" x 2.1/2"

Tech Sheet 1629

Code Information: AFS = Flange with O-Ring Groove GFS = Flange with Flat Face

# SAE FLANGES

## Threaded Flanges-Companion (Counter)

Bolts, washers and O-Rings are not included and must be purchased separately  
Please see page 108



### 3000 psi, BSPP, Metric Mount

0300	Flange Size	Thread	Bolt Type Metric
GFS080GM-038	1/2"	3/8"	M8
GFS080GM	1/2"	1/2"	M8
GFS100GM-012	3/4"	1/2"	M10
GFS100GM	3/4"	3/4"	M10
GFS102GM-034	1"	3/4"	M10
GFS102GM	1"	1"	M10
GFS104GM-100	1.1/4"	1"	M10
GFS104GM	1.1/4"	1.1/4"	M10
GFS106GM-114	1.1/2"	1.1/4"	M12
GFS106GM	1.1/2"	1.1/2"	M12
GFS108GM-112	2"	1.1/2"	M12
GFS108GM	2"	2"	M12
GFS110GM-200	2.1/2"	2"	M12
GFS110GM	2.1/2"	2.1/2"	M12
GFS112GM-212	3"	2.1/2"	M16
GFS112GM	3"	3"	M16
GFS114GM-300	3.1/2"	3"	M16
GFS114GM	3.1/2"	3.1/2"	M16
GFS116GM-312	4"	3.1/2"	M16
GFS116GM	4"	4"	M16

Tech Sheet 1631

### 6000 psi, BSPP, Metric Mount

0300	Flange Size	Thread	Bolt Type Metric
GFS401GM-038	1/2"	3/8"	M8
GFS401GM-012	1/2"	1/2"	M8
GFS402GM-012	3/4"	1/2"	M10
GFS402GM	3/4"	3/4"	M10
GFS403GM	1"	1"	M12
GFS404GM-100	1.1/4"	1"	M14
GFS404GM	1.1/4"	1.1/4"	M14
GFS405GM-114	1.1/2"	1.1/4"	M16
GFS405GM	1.1/2"	1.1/2"	M16
GFS406GM-112	2"	1.1/2"	M20
GFS406GM	2"	2"	M20

Tech Sheet 1631

### 3000 psi, BSPP, UNC Mount

0300	Flange Size	Thread	Bolt Type Metric
GFS080GU-038	1/2"	3/8"	5/16"
GFS100GU-012	3/4"	1/2"	3/8"
GFS100GU	3/4"	3/4"	3/8"
GFS102GU-034	1"	3/4"	3/8"
GFS102GU	1"	1"	3/8"
GFS104GU-100	1.1/4"	1"	7/16"
GFS104GU	1.1/4"	1.1/4"	7/16"
GFS106GU-114	1.1/2"	1.1/4"	1/2"
GFS106GU	1.1/2"	1.1/2"	1/2"
GFS108GU-112	2"	1.1/2"	1/2"
GFS108GU	2"	2"	1/2"
GFS110GU-200	2.1/2"	2"	1/2"
GFS110GU	2.1/2"	2.1/2"	1/2"
GFS112GU-212	3"	2.1/2"	5/8"
GFS112GU	3"	3"	5/8"
GFS114GU-300	3.1/2"	3"	5/8"
GFS114GU	3.1/2"	3.1/2"	5/8"
GFS116GU-312	4"	3.1/2"	5/8"
GFS116GU	4"	4"	5/8"

Tech Sheet 1631

### 6000 psi, BSPP, UNC Mount

0300	Flange Size	Thread	Bolt Type Metric
GFS401GU-038	1/2"	3/8"	1/2"
GFS401GU-012	1/2"	1/2"	5/16"
GFS402GU-012	3/4"	1/2"	3/8"
GFS402GU	3/4"	3/4"	3/8"
GFS403GU	1"	1"	7/16"
GFS404GU-100	1.1/4"	1"	1/2"
GFS404GU	1.1/4"	1.1/4"	1/2"
GFS405GU-114	1.1/2"	1.1/4"	5/8"
GFS405GU	1.1/2"	1.1/2"	5/8"
GFS406GU-112	2"	1.1/2"	3/4"
GFS406GU	2"	2"	3/4"

Tech Sheet 1631

# SAE FLANGES

## Socket Weld Flanges

Bolts, washers and O-Rings are not included and must be purchased separately  
Please see page 108



### 3000 psi, Metric Mount

0300	Flange Size	Boss Weld Diameter mm	Bolt Type Metric
GFS080SM-038	1/2"	17.5	M8
GFS080SM-A20	1/2"	20.3	M8
GFS080SM	1/2"	21.6	M8
GFS100SM-A25	3/4"	25.3	M10
GFS100SM	3/4"	27.2	M10
GFS102SM-A30	1"	30.3	M10
GFS102SM	1"	34	M10
GFS104SM-A38	1.1/4"	38.3	M10
GFS104SM	1.1/4"	42.8	M10
GFS106SM	1.1/2"	48.6	M12
GFS106SM-A50	1.1/2"	50.5	M12
GFS108S	2"	61	M12
GFS110SM	2.1/2"	76.6	M12
GFS112SM	3"	90.5	M16
GFS114SM	3.1/2"	103	M16
GFS116SM	4"	115.5	M16

Tech Sheet 1632

### 6000 psi, Metric Mount

0300	Flange Size	Boss Weld Diameter mm	Bolt Type Metric
GFS401SM-038	1/2"	17.5	M8
GFS401SM-A20	1/2"	20.3	M8
GFS401SM-012	1/2"	21.6	M8
GFS402SM-A25	3/4"	25.3	M10
GFS402SM	3/4"	27.2	M10
GFS403SM-A30	1"	30.3	M12
GFS403SM	1"	34	M12
GFS404SM-A38	1.1/4"	38.3	M14
GFS404SM	1.1/4"	42.8	M14
GFS405SM	1.1/2"	48.6	M16
GFS405SM-A50	1.1/2"	50.5	M16
GFS406SM	1.1/2"	61	M20
GFS407SM	2.1/2"	76.6	M24

Tech Sheet 1632

## Socket Weld Flanges

Bolts, washers and O-Rings are not included and must be purchased separately  
Please see page 108

### 3000 psi

0300	Flange Size	Boss Weld Diameter mm	Bolt Type Metric	Bolt Type UNC
AFS080S-038	1/2"	17.5	M8 x 30	5/16" x 1.1/4"
AFS080S-A20	1/2"	20.3	M8 x 30	5/16" x 1.1/4"
AFS080S	1/2"	21.6	M8 x 30	5/16" x 1.1/4"
AFS100S-A25	3/4"	25.3	M10 x 35	3/8" x 1.1/2"
AFS100S	3/4"	27.2	M10 x 35	3/8" x 1.1/2"
AFS102S-A30	1"	30.3	M10 x 35	3/8" x 1.1/2"
AFS102S	1"	34	M10 x 35	3/8" x 1.1/2"
AFS104S-A38	1.1/4"	38.3	M10 x 40	7/16" x 1.1/2"
AFS106S	1.1/2"	48.6	M12 x 45	1/2" x 1.3/4"
AFS106S-A50	1.1/2"	50.5	M12 x 45	1/2" x 1.3/4"
AFS108S	2"	61	M12 x 45	1/2" x 1.3/4"
AFS110S	2.1/2"	76.6	M12 x 45	1/2" x 1.3/4"
AFS114S	3.1/2"	103	M16 x 50	5/8" x 2"
AFS116S	4"	115.5	M16 x 50	5/8" x 2"

Tech Sheet 1633

### 3000 psi, UNC Mount

0300	Flange Size	Boss Weld Diameter mm	Bolt Type Metric
GFS080SU-038	1/2"	17.5	5/16"
GFS080SU-A20	1/2"	20.3	5/16"
GFS080SU	1/2"	21.6	5/16"
GFS100SU-A25	3/4"	25.3	3/8"
GFS100SU	3/4"	27.2	3/8"
GFS102SU-A30	1"	30.3	3/8"
GFS102SU	1"	34	3/8"
GFS104SU-A38	1.1/4"	38.3	7/16"
GFS104SU	1.1/4"	42.8	7/16"
GFS106SU	1.1/2"	48.6	1/2"
GFS106SU-A50	1.1/2"	50.5	1/2"
GFS108SU	2"	61	1/2"
GFS110SU	2.1/2"	76.6	1/2"
GFS112SU	3"	90.5	5/8"
GFS114SU	3.1/2"	103	5/8"
GFS116SU	4"	115.5	5/8"

Tech Sheet 1632

### 6000 psi, UNC Mount

0300	Flange Size	Boss Weld Diameter mm	Bolt Type Metric
GFS401SU-038	1/2"	17.5	5/16"
GFS401SU-A20	1/2"	20.3	5/16"
GFS401SU-012	1/2"	21.6	5/16"
GFS402SU-A25	3/4"	25.3	3/8"
GFS402SU	3/4"	27.2	3/8"
GFS403SU-A30	1"	30.3	7/16"
GFS403SU	1"	34	7/16"
GFS404SU-A38	1.1/4"	38.3	1/2"
GFS404SU	1.1/4"	42.8	1/2"
GFS405SU	1.1/2"	48.6	5/8"
GFS405SU-A50	1.1/2"	50.5	5/8"
GFS406SU	1.1/2"	61	3/4"

Tech Sheet 1632



### 6000 psi

0300	Flange Size	Boss Weld Diameter mm	Bolt Type Metric	Bolt Type UNC
AFS401S-038	1/2"	17.5	M8 x 30	5/16" x 1.1/4"
AFS401S-A20	1/2"	20.3	M8 x 30	5/16" x 1.1/4"
AFS401S-012	1/2"	21.6	M8 x 30	5/16" x 1.1/4"
AFS402S-A25	3/4"	25.3	M10 x 35	3/8" x 1.1/2"
AFS402S	3/4"	27.2	M10 x 35	3/8" x 1.1/2"
AFS403S-A30	1"	30.3	M12 x 45	7/16" x 1.3/4"
AFS403S	1"	34	M12 x 45	7/16" x 1.3/4"
AFS404S-A38	1.1/4"	38.3	M14 x 45	1/2" x 1.3/4"
AFS404S	1.1/4"	42.8	M14 x 45	1/2" x 1.3/4"
AFS405S	1.1/2"	48.6	M16 x 50	5/8" x 2"
AFS405S-A50	1.1/2"	50.5	M16 x 50	5/8" x 2"
AFS406S	2"	61	M20 x 65	3/4" x 2.1/2"

Tech Sheet 1633

# SAE FLANGES

## Socket Weld Flanges 90°

Bolts, washers and O-Rings are not included and must be purchased separately  
Please see page 108



### 3000 psi, Metric

0300	Flange Size	Boss Weld Diameter mm	Bolt Type Metric	Bolt Type UNC
<b>AFS080/90S-038</b>	1/2"	17.5	M8 x 30	5/16" x 1.1/4"
<b>AFS080/90S</b>	1/2"	21.6	M8 x 30	5/16" x 1.1/4"
<b>AFS100/90S</b>	3/4"	27.2	M10 x 35	3/8" x 1.1/2"
<b>AFS106/90S</b>	1.1/2"	48.6	M12 x 45	7/16" x 1.3/4"

Tech Sheet 1634

### 6000 psi, Metric

0300	Flange Size	Boss Weld Diameter mm	Bolt Type Metric	Bolt Type UNC
<b>AFS401/90S-038</b>	1/2"	17.5	M8 x 30	5/16" x 1.1/4"
<b>AFS401/90S-012</b>	1/2"	21.6	M8 x 30	5/16" x 1.1/4"
<b>AFS402/90S</b>	3/4"	27.2	M10 x 35	3/8" x 1.1/2"
<b>AFS403/90S</b>	1"	34	M12 x 45	7/16" x 1.3/4"
<b>AFS404/90S</b>	1.1/4"	42.8	M14 x 50	1/2" x 1.3/4"
<b>AFS405/90S</b>	1.1/2"	48.6	M16 x 50	5/8" x 2"
<b>AFS406/90S</b>	2"	61	M20 x 110	-

Tech Sheet 1634

## Butt Weld Flanges

Bolts, washers and O-Rings are not included and must be purchased separately  
Please see page 108



### 3000 psi

0300	Flange Size	Boss Weld Diameter mm	Bolt Type Metric	Bolt Type UNC
<b>AFS080ST-038</b>	1/2"	17.5	M8 x 30	5/16" x 1.1/4"
<b>AFS080ST</b>	1/2"	21.5	M8 x 30	5/16" x 1.1/4"
<b>AFS100ST</b>	3/4"	28	M10 x 35	3/8" x 1.1/2"
<b>AFS102ST</b>	1"	34	M10 x 35	3/8" x 1.1/2"
<b>AFS104ST</b>	1.1/4"	42.8	M10 x 40	7/16" x 1.1/2"
<b>AFS106ST</b>	1.1/2"	48.6	M12 x 45	1/2" x 1.3/4"
<b>AFS108ST</b>	2"	61	M12 x 45	1/2" x 1.3/4"
<b>AFS110ST</b>	2.1/2"	77	M12 x 45	1/2" x 1.3/4"
<b>AFS112ST</b>	3"	92	M16 x 50	5/8" x 2"
<b>AFS114ST</b>	3.1/2"	103	M16 x 50	5/8" x 2"
<b>AFS116ST</b>	4"	115.5	M16 x 50	5/8" x 2"

Tech Sheet 1635

### 6000 psi

0300	Flange Size	Boss Weld Diameter mm	Bolt Type Metric	Bolt Type UNC
<b>AFS401ST-038</b>	1/2"	17.5	M8 x 30	5/16" x 1.1/4"
<b>AFS401ST-012</b>	1/2"	21.5	M8 x 30	5/16" x 1.1/4"
<b>AFS402ST</b>	3/4"	28	M10 x 35	3/8" x 1.1/2"
<b>AFS403ST</b>	1"	34	M12 x 45	7/16" x 1.3/4"
<b>AFS404ST</b>	1.1/4"	42.8	M14 x 45	1/2" x 1.3/4"
<b>AFS405ST</b>	1.1/2"	48.6	M16 x 50	5/8" x 2"
<b>AFS406ST</b>	2"	61	M20 x 65	3/4" x 2.1/2"

Tech Sheet 1635

# havIT

## Butt Weld Flanges 90°

Bolts, washers and O-Rings are not included and must be purchased separately  
Please see page 108



### 3000 psi

0300	Flange Size	Boss Weld Diameter mm	Bolt Type Metric	Bore Size mm
<b>AFS200/90ST</b>	3/4"	27	M10 x 40	27
<b>AFS202/90ST</b>	1"	34.5	M10 x 45	34.5
<b>AFS204/90ST</b>	1.1/4"	43	M10 x 45	43
<b>AFS206/90ST</b>	1.1/2"	50	M12 x 50	50
<b>AFS208/90ST</b>	2"	65	M12 x 70	65

Tech Sheet 1636

### 6000 psi

0300	Flange Size	Boss Weld Diameter mm	Bolt Type Metric	Bore Size mm
<b>AFS700/90ST</b>	3/4"	28	M10 x 35	28
<b>AFS702/90ST</b>	1"	34	M12 x 45	34
<b>AFS704/90ST</b>	1.1/4"	42	M14 x 50	42
<b>AFS706/90ST</b>	1.1/2"	48	M16 x 50	48
<b>AFS708/90ST</b>	2"	65	M20 x 110	65

Tech Sheet 1636

**Code Information: AFS = Flange with O-Ring Groove  
GFS = Flange with Flat Face**



**For Bolts, Spring Washers & O-Rings see page 108**



## Butt Weld Flanges-Companion (Counter)

Bolts, washers and O-Rings are not included and must be purchased separately

Please see page 108



### 3000 psi, Metric Mount

0300	Flange Size	Boss Weld Diameter mm	Bolt Type Metric
GFS080STM-038	1/2"	17.5	M8
GFS080STM	1/2"	21.5	M8
GFS100STM	3/4"	28	M10
GFS102STM	1"	34	M10
GFS104STM	1.1/4"	42.8	M10
GFS106STM	1.1/2"	48.6	M12
GFS108STM	2"	61	M12
GFS110STM	2.1/2"	77	M12
GFS112STM	3"	92	M16
GFS114STM	3.1/2"	103	M16
GFS116STM	4"	115.5	M16

Tech Sheet 1637

### 3000 psi, UNC Mount

0300	Flange Size	Boss Weld Diameter mm	Bolt Type UNC
GFS080STU-038	1/2"	17.5	5/16"
GFS080STU	1/2"	21.5	5/16"
GFS100STU	3/4"	28	3/8"
GFS102STU	1"	34	3/8"
GFS104STU	1.1/4"	42.8	7/16"
GFS106STU	1.1/2"	48.6	1/2"
GFS108STU	2"	61	1/2"
GFS110STU	2.1/2"	77	1/2"
GFS112STU	3"	92	5/8"
GFS114STU	3.1/2"	103	5/8"
GFS116STU	4"	115.5	5/8"

Tech Sheet 1637

### 6000 psi, Metric Mount

0300	Flange Size	Boss Weld Diameter mm	Bolt Type Metric
GFS401STM-038	1/2"	17.5	M8
GFS401STM-012	1/2"	21.5	M8
GFS402STM	3/4"	28	M10
GFS403STM	1"	34	M12
GFS404STM	1.1/4"	42.8	M14
GFS405STM	1.1/2"	48.6	M16
GFS406STM	2"	61	M20

Tech Sheet 1637

### 6000 psi, UNC Mount

0300	Flange Size	Boss Weld Diameter mm	Bolt Type UNC
GFS401STU-038	1/2"	17.5	5/16"
GFS401STU-012	1/2"	21.5	5/16"
GFS402STU	3/4"	28	3/8"
GFS403STU	1"	34	7/16"
GFS404STU	1.1/4"	42.8	1/2"
GFS405STU	1.1/2"	48.6	5/8"
GFS406STU	2"	61	3/4"

Tech Sheet 1637

Code Information: AFS = Flange with O-Ring Groove GFS = Flange with Flat Face

For Hydraulic Tubing  
see pages 179-183



# SAE FLANGES

## Socket Weld Coupling Set

Bolts, washers and O-Rings included



### 3000 psi, Metric Mount

0300	Flange Size	Boss Weld Diameter mm	Bolt Type Metric
DFS080SM-038	1/2"	17.5	M8
DFS080SM-A20	1/2"	20.3	M8
DFS080SM	1/2"	21.6	M8
DFS100SM-A25	3/4"	25.3	M10
DFS100SM	3/4"	27.2	M10
DFS102SM-A30	1"	30.3	M10
DFS102SM	1"	34	M10
DFS104SM-A38	1.1/4"	38.3	M10
DFS104SM	1.1/4"	42.8	M10
DFS106SM	1.1/2"	48.6	M12
DFS106SM-A50	1.1/2"	50.5	M12
DFS108SM	2"	61	M12
DFS110SM	2.1/2"	76.6	M12
DFS112SM	3"	90.5	M16
DFS114SM	3.1/2"	103	M16
DFS116SM	4"	115.5	M16

Tech Sheet 1638

### 3000 psi, UNC Mount

0300	Flange Size	Boss Weld Diameter mm	Bolt Type UNC
DFS080SU-038	1/2"	17.5	5/16"
DFS080SU-A20	1/2"	20.3	5/16"
DFS080SU	1/2"	21.6	5/16"
DFS100SU-A25	3/4"	25.3	3/8"
DFS100SU	3/4"	27.2	3/8"
DFS102SU-A30	1"	30.3	3/8"
DFS102SU	1"	34	3/8"
DFS104SU-A38	1.1/4"	38.3	7/16"
DFS104SU	1.1/4"	42.8	7/16"
DFS106SU	1.1/2"	48.6	1/2"
DFS106SU-A50	1.1/2"	50.5	1/2"
DFS108SU	2"	61	1/2"
DFS110SU	2.1/2"	76.6	1/2"
DFS112SU	3"	90.5	5/8"
DFS114SU	3.1/2"	103	5/8"
DFS116SU	4"	115.5	5/8"

Tech Sheet 1638

### 6000 psi, Metric Mount

0300	Flange Size	Boss Weld Diameter mm	Bolt Type Metric
DFS401SM-038	1/2"	17.5	M8
DFS401SM-A20	1/2"	20.3	M8
DFS401SM-012	1/2"	21.6	M8
DFS402SM-A25	3/4"	25.3	M10
DFS402SM	3/4"	27.2	M10
DFS403SM-A30	1"	30.3	M10
DFS403SM	1"	34	M10
DFS404SM-A38	1.1/4"	38.3	M10
DFS404SM	1.1/4"	42.8	M10
DFS405SM	1.1/2"	48.6	M12
DFS405SM-A50	1.1/2"	50.5	M12
DFS406SM	2"	61	M12

Tech Sheet 1638

### 6000 psi, UNC Mount

0300	Flange Size	Boss Weld Diameter mm	Bolt Type UNC
DFS401SU-038	1/2"	17.5	5/16"
DFS401SU-A20	1/2"	20.3	5/16"
DFS401SU-012	1/2"	21.6	5/16"
DFS402SU-A25	3/4"	25.3	3/8"
DFS402SU	3/4"	27.2	3/8"
DFS403SU-A30	1"	30.3	3/8"
DFS403SU	1"	34	3/8"
DFS404SU-A38	1.1/4"	38.3	7/16"
DFS404SU	1.1/4"	42.8	7/16"
DFS405SU	1.1/2"	48.6	1/2"
DFS405SU-A50	1.1/2"	50.5	1/2"
DFS406SU	2"	61	1/2"

Tech Sheet 1638

## Bolts & Spring Washers

### Metric, Set of 4

0300	Thread
M8X25	M8 x 25
M8X30	M8 x 30
M10X30	M10 x 30
M10X35	M10 x 35
M10X40	M10 x 40
M10X45	M10 x 45
M12X35	M12 x 35
M12X45	M12 x 45
M12X50	M12 x 50
M12X70	M12 x 70
M14X45	M14 x 45
M14X50	M14 x 50
M16X55	M16 x 55
M20X60	M20 x 60
M20X65	M20 x 65
M20X70	M20 x 70
M20X110	M20 x 110

### UNC, Set of 4

0300	Thread
UNC3/8X11/4	3/8" x 1.1/4"
UNC3/8X11/2	3/8" x 1.1/2"
UNC7/16X11/2	7/16" x 1.1/2"
UNC7/16X13/4	7/16" x 1.3/4"
UNC1/2X13/4	1/2" x 1.3/4"
UNC1/2X11/2	1/2" x 1.1/2"
UNC5/8X2	5/8" x 2"
UNC5/16X11/4	5/16" x 1.1/4"
UNC3/4X21/2	3/4" x 2.1/2"



## O-Rings



### Buna

0300	Size
1/2-ORING	1/2"
3/4-ORING	3/4"
1-ORING	1"
11/4-ORING	1.1/4"
11/2-ORING	1.1/2"
2-ORING	2"
21/2-ORING	2.1/2"
3-ORING	3"
31/2-ORING	3.1/2"
4-ORING	4"
5-ORING	5"

Tech Sheet 1639