



techhose

QUALITY CONNECTIONS

Hydraulics

Pneumatics
& Vacuum

Industrial

Compressed Air
& Ring Main

Process &
Instrumentation

Hydraulics

Test, Flow Filtration & Cooling

HYDRAULIC FILTRATION



High Pressure In-line Filters

Features:

- Filter element remains in filter bow
- Environmentally-friendly design
- Bypass valve integral part of filter bow

Benefits

- Avoid use of non-genuine parts
- Less space needed to change/service filter
- Reduces environmental waste by over 50%
- No handling of loose reusable parts
- Easy to integrate in manifold systems
- Lower pressure lost across filter

Typical Applications:

- Mobile working hydraulics
- Mobile drive system
- Pilot line filtration
- Servo controls
- Reverse flow valve application
- Industrial working hydraulics
- Control systems

Also available with various connections:

- SAE flanged
- SAE threaded
- ISO metric
- Manifold mounted



iprotect® glass fibre element as standard

Working Temperature:
-40°C to +100°C

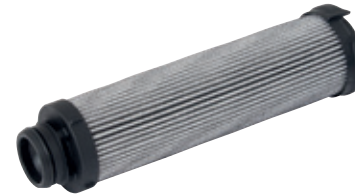
Maximum Working Pressure:
450 bar

EPF Series, 7 bar Bypass

0045	Thread	LPM	Micron
EPF1105QIBPMG081	1/2"	40	5
EPF1110QIBPMG081	1/2"	40	10
EPF2205QIBPMG121	3/4"	140	5
EPF2210QIBPMG121	3/4"	140	10
EPF3205QIBPMG161	1"	250	5
EPF3210QIBPMG161	1"	250	10
EPF4205QIBPMG201	1.1/4"	450	5
EPF4210QIBPMG201	1.1/4"	450	10
EPF5105QIBPMG241	1.1/2"	500	5
EPF5110QIBPMG241	1.1/2"	500	10

Tech Sheet 67979

High Pressure Replacement Elements



2 Micron Element

0045	Manufacturer's Code	To Suit
EPF1-12-2	944418Q	EPF1
EPF2-34-2	944430Q	EPF2
EPF3-1-2	944438Q	EPF3

Tech Sheet 67979

5 Micron Element

0045	Manufacturer's Code	To Suit
EPF1-12-5	944419Q	EPF1
EPF2-34-5	944431Q	EPF2
EPF3-1-5	944439Q	EPF3
EPF4-114-5	944447Q	EPF4

Tech Sheet 67979

10 Micron Element

0045	Manufacturer's Code	To Suit
EPF1-12-10	944420Q	EPF1
EPF2-34-10	944432Q	EPF2
EPF3-1-10	944440Q	EPF3
EPF4-114-10	944448Q	EPF4

Tech Sheet 67979

20 Micron Element

0045	Manufacturer's Code	To Suit
EPF1-12-20	944421Q	EPF1
EPF2-34-20	944433Q	EPF2
EPF5-112-20	944453Q	EPF5

Tech Sheet 67979

High Pressure In-line Filter Accessories



Visual Clogging Indicators

0045	Port Size
FMUM3MVMS08	S08 Cavity

Tech Sheet 67979

- Enclosure class IP65
- Electrical connector DIN 43650
- Overvoltage category II (EN61010-1)

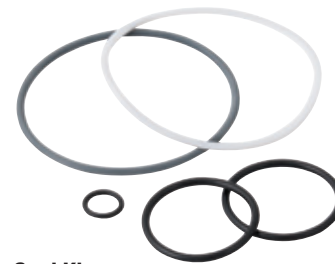


Electrical Clogging Indicators

0045	Port Size
FMUT1MVMS08	S08 Cavity

Tech Sheet 67979

Fluoroelastomer also available



Nitrile Seal Kits

0045	To Suit
EPFSK001	EPF1
EPFSK002	EPF2
EPFSK003	EPF3
EPFSK004	EPF4 & 5

Tech Sheet 67979

HYDRAULIC FILTRATION



Medium Pressure Filters

Features:

- More compact solutions are possible
- Filter element remains in filter bowl during filter servi
- Reduces waste over 50% thanks to reusable element core
- No risk of installation mistake due to a 'foolproof' design
- Easy to integrate into hydraulic manifold solutions

Benefits

- Avoid use of non-genuine parts
- Less space needed to change/service filte
- No handling of loose reusable parts
- Lower pressure lost across filte

Typical Applications:

- Compressor lube oil
- Off-line filter loops
- Machine tools (automotive standard)
- Hydrostatic drive charge pumps
- Mobile equipment
- Pilot lines for servo controls
- Oil patch drilling equipment

 **Working Temperature:**
-20°C to +100°C

 **Maximum Working Pressure:**
70 bar

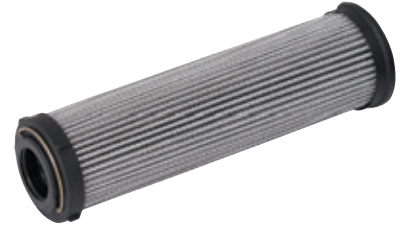


GMF Series

0045	Thread	LPM	Micron
GMF2110QIVPKG164	1"	55	10
GMF2210QIVPKG164	1"	90	10
GMF3110QIVPKG244	1.1/2"	120	10
GMF3210QIVPKG244	1.1/2"	230	10
GMF4110QIVPKG324	2"	350	10
GMF4210QIVPKG324	2"	530	10

Tech Sheet 67980

Medium Pressure Replacement Elements



10 Micron Element

0045	Manufacturer's Code	To Suit
GMF321-112-10	938909Q	GMF321
GMF411-2-10	938913Q	GMF411

Tech Sheet 67980

Medium Pressure In-line Filter Accessories



Visual Clogging Indicators

0045	Port Size
FMUM3KVMS08	S08 Cavity

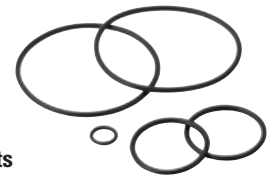
Tech Sheet 67980



Electrical Clogging Indicators

0045	Port Size
FMUT1KVMS08	S08 Cavity

Tech Sheet 67980



Nitrile Seal Kits

0045	To Suit
930000140	GMF21 & 22
930000141	GMF31 & 32
930000142	GMF41 & 42

Tech Sheet 67980

Viton Seal Kits

0045	To Suit
930000149	GMF21 & 22
930000150	GMF31 & 32
930000151	GMF41 & 42

Tech Sheet 67980

Gauge Isolator Valves

Designed to prevent pressure gauge damage and extend gauge life. The gauge isolator valve when installed between gauge and pressure line protects the pressure gauge from continuous hydraulic pressure, surges or shock loads.

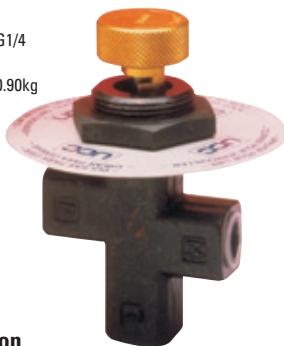
Single Station:

Cast iron and steel. Knurled aluminium knob twist to lock or push to read type.

Maximum W/P:
350 bar

Port Size:
Single station = G1/4

Weight:
Single station = 0.90kg



Single Station

0045	Description	Port Size
G11414	Push to Read	1/4"

Modular Filler Breathers

Construction:

Moulded in non-corrodible glass-filled nylon combining strength with lightweight design.

Options:

- Single 63mm diameter hole filler breather installation that eliminates drilled and tapped holes using self-locking clamps
- 6 hole filler breather installation that uses 6 x No. 10 thread forming screws
- 3 hole filler breather installation that uses 3 x No. 10 thread forming screws



Filtration: Expanded polyurethane foam, 10 micron.

Seals: Nitrile.

Un-pressurised, 10 Micron

0045	Description
AB98210011UC	Single Hole
AB98810011UC	6 Hole
AB68118	3 Hole

Tech Sheet 636

Screw-on Type Air Breather (IP65)

Manufactured from non-corrodible glass filled nylon



Un-pressurised 10 Micron, BSPP, 101mm Diameter

0045	Thread
AB98410101UC	3/4"

Tech Sheet 636

Manufactured from in glass filled nylon and glass-coupled polypropylene.

Un-pressurised 10 Micron, BSPP, 70mm Diameter

0045	Thread
SAB6101	G1/2
SAB7101	G3/4

Suction Strainers

Construction:

- Stainless steel media 30% glass-filled nylon hea
- Zintec centre tube and end cap
- Epoxy adhesives

Filter Media: 125 micron.

Flow Range: 15-500 L/min.

Mounting Threads: G1/2 up to G3

Maximum Working Temperature:
+90°C



BSPP, Without Bypass

0045	Old Ref	Thread	LPM
SE1319	SS1A1S1AP	1/2"	15
SE1320	SS1B2A1AP	3/4"	25
SE1457	SS1B3A1AP	1"	50
SE1323	SS1C4A1AP	1.1/2"	95
SE1324	SS1C5A1AP	1.1/2"	130
SE1326	SS1C6A1AP	2"	180
SE1219	SS1D7A1AP	2"	225
SE1221	SS1D9A1AP	3"	500

Tech Sheet 60433

BSPP, With Bypass

0045	Thread	LPM
SE5100	1/2"	15
SE5101	3/4"	25
SE5102	1"	50
SE5103	1.1/2"	95
SE5104	1.1/2"	130
SE5105	2"	180
SE5106	2"	225
SE5107	2.1/2"	350
SE5108	3"	500

Tech Sheet 60433

For Pneumatic Valves & Accessories
see page 564

HYDRAULIC FILTRATION



Maxiflo

Seal: Nitrile

Filter Bowl Material: Steel

Fluids: Mineral oils

Filter Head Material: Aluminium LM24

 **Working Temperature:**
-30°C to +90°C

 **Maximum Working Pressure:**
7 bar



BSPP

0045	Thread	LPM	Material
MXA9551424	1.1/4"	160	Microglass
MXA9511424	1.1/4"	160	Paper



Replacement Elements

0045	Model	Quantity
MXR8550	MXA8551424	1
MX1518410X4	MXA8551223, MX8551023 & 12PS10CTV1R2B	4
MXR9560	MXA9561424	1
MXR9550	MXA9551424	1
MX1591.4.10X4	MXA9511424 & MXA9511223	4

Mini Pressure Filter

- Compact, robust and easy to install
- Manufactured in high quality brass
- 10µ, 25µ, and 125µ elements
- No indicator filter
- G1/4 ports
- For use in lubrication, high pressure water and oil burner systems
- Reliable protection of low flow pilot valve
- Suitable for use with mineral and petroleum based fluid
- Nitrile seal



 **Working Temperature:**
-30°C to +90°C

 **Maximum Working Pressure:**
280 bar

Filtration Media:

10 micron (nominal) Nitrile phenolic resin impregnated cellulose.

25µ, 40µ and 125µ (nominal) stainless steel.

Please note: HPR1719 and HPR1819 elements are not stainless steel, they are paper with tin end caps.

Filters

0045	Old Ref	Micron	LPM
HPA1619100	HP122910	10	6
HPA1719100	HP122925	25	17
HPA1819100	HP122940	40	18

Replacement Elements

0045	Old Ref	To Suit
HPR1619	R122910	HPA1619100
HPR1719	R122925	HPA1719100
HPR1819	R122940	HP1819100

In-line Spin-on Filters

- Paper and glass fibre element medi
- Spin-on disposable canisters
- Suitable for suction and return line applications
- Flow rates to 350 L/min.
- Bypass
- Visual indicator

Seals: Buna Nitrile.

Filter Head Material: Aluminium alloy.

Fluids: Compatible with hydraulic oils, coolant fluids and petroleum based fluids

Filter Bowl Material: Steel.

Element Media:

10CT = 10 micrometer nominal filtration (resin impregnated cellulose).

10BT = 10 micrometer absolute filtration (glass fibre composite material).

Indication:

42mm dia gauge: (0-12 bar. Return line). 0-76cm. Hg Suction line.

 **Working Temperature:**
-30°C to +100°C

 **Maximum Working Pressure:**
7 bar



10BT, BSPP

0045	Thread	LPM Suction & Return
12PS10BTV1R2B	3/4"	65

Replacement Elements

0045	To Suit
926501	12PS10BTV1R2B

Diffusers

Construction:

- Zintec body, 30% glass-filled nylon head
- Zintec end cap
- Epoxy adhesives

Flow Range:

50 L/min up to 454 L/min.

Mounting Threads:

3/4" up to 2".

Designed to reduce fluid aeration, foaming and reservoir noise in fluid systems, extends pump life by reducing cavitation to pump inlet, ranging from 50-454 L/min and port sizes G3/4 up to G2. Suitable for all mineral base fluids



BSPP

0045	Thread	LPM
2210	3/4"	50
2201	1"	114
2202	1.1/2"	227
2203	2"	454

Tank Top Filters

Working Temperature:
-30°C to +90°C

Maximum Working Pressure:
280 bar



1" BSPP

0045	LPM	Bypass PSIG	Micron
FTB1A100V25G16X	120	25	10
Tech Sheet 1338			

1" BSPP, Replacement Element

0045	Description	Micron
FTBE2A20Q	Replacement Element	20

Tanktopper offers a total filtration solution with integrated air breathe . Patented LEIF elements safeguard filtration qualit .

Working Temperature:
-40°C to +80°C

Maximum Working Pressure:
10 bar



Tanktopper Series

0045	Thread	LPM
TPR110QLBP2EG12E	3/4"	40
TPR510QLBP2E2G20	1.1/4"	120
TPR710QLBP2E2G24	1.1/2"	250
Tech Sheet 60430		

TTF features pre-filtration by means of a magnet column
Flow from inside to out.

Working Temperature:
-40°C to +100°C

Maximum Working Pressure:
10 bar



TTF Series

0045	Thread	LPM
TF310QLBP2EG121	3/4"	90
TF610QLBP2EG203	1.1/2"	170
TF810QLBP2EG243	1.1/2"	300
TF1010QLBP2HG24A	1.1/2"	500
Tech Sheet 60431		

Compact tank top mounted return line filte .
Filter element can be used for direct screw-in mounting with co-polymer reservoirs.
Inside to out flow avoids re-contamination of the system

Working Temperature:
-20°C to +100°C

Maximum Working Pressure:
10 bar



PT Tank Top Mounted Filter Series

0045	Thread	LPM
PT2110QBPGG124	3/4"	25
PT2210QBPGG124	3/4"	50
PT4110QBPGG164	1"	110
PT4210QBPGG164	1"	175
Tech Sheet 60432		

Non-corrodible In-line Filter



Working Temperature:
-30°C to +80°C

Maximum Working Pressure:
7 bar

Oil, BSPP

0045	Thread
IL1151	1"
Tech Sheet 1340	

Replacement Element for Oil

0045	
R76115	
Tech Sheet 1340	

Water, BSPP

0045	Thread
IL1251	1"
Tech Sheet 1340	

Replacement Element for Water

0045	
R76125	
Tech Sheet 1340	

HYDRAULIC FLOW METERING

Easiflow Meter

Working Temperature:
+5°C to +80°C
+60°C with water

Maximum Working Pressure:
10 bar

- Oil and water calibrated
- Works in any plane
- Pressures up to 10 bar
- Switches – Fully adjustable flow rate signalling
- Plant and equipment protection
- Switches – Colour coded by application and AC/DC options

Construction:

Cone: Acetal
Viewing Glass: Borosilicate glass
Calibrated Spring: Stainless steel
Seal: Nitrile
Body: Glass filled nylo
Flow Range: 1-150 L/min
Viscosity Range: 10-200 centistokes
Accuracy: ±5% FSD
Repeatability: ±1% FSD
Connections: 1" BSPP
Weight: 0.4kg



Oil

0045	LPM
EFL0301	2-30
EFL0501	4-50
EFL1001	5-100
EFL1501	10-150



Water

0045	LPM
EFW0152	1-15
EFW0302	2-30
EFW0502	4-50
EFW1002	5-100
EFW1502	10-150

Fluid Level & Temperature Gauges

Working Temperature:
-30°C to +90°C

Maximum Working Pressure:
1 bar

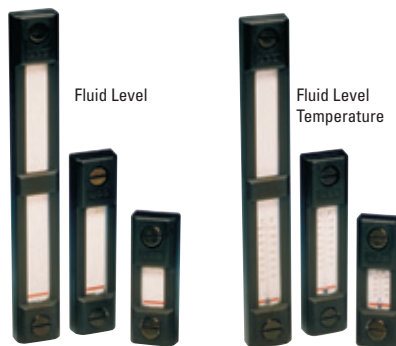
Construction:

- Lens transparent polyamide
- Lens base nylon 66
- No aluminium content
- Shroud high impact polystyrene

Seals: Nitrile.

Fluid Compatibility:

Mineral and petroleum based fluids



Fluid Level

0045	Centres mm	Thread
FL111	76	M10
FL211	127	M10
FL311	254	M10
FL112	76	M12
FL212	127	M12
FL312	254	M12

Tech Sheet 10301

Fluid Level Temperature

0045	Centres mm	Thread
FLT121	76	M10
FLT221	127	M10
FLT321	254	M10
FLT112	76	M12
FLT212	127	M12
FLT312	254	M12

Tech Sheet 10301

Dataflow In-line Flow Indicator

Working Temperature:
+5°C to +80°C Oil
+5°C to +60°C Water

Maximum Working Pressure:
10 bar Oil/water

- Indicator gives flow visibility
- Works in any plane
- Accepts reverse flow
- Indicates flow from 2-150 L/min



Indicator

0045	Description
DFI900	Dataflow Indicator

Tech Sheet 1341

Hydraulic Test Unit

Hydraulic test units are designed specifically for the speedy diagnosis of hydraulic circuit faults in mobile, marine and industrial systems using normal range of mineral oils, their rugged construction based mainly on mild steel, manganese bronze and acrylic materials makes them ideally suited for arduous use in the field. Each unit is supplied in a convenient carrying case providing full protection and additional storage space for fittings. Because they need no power source such as batteries etc, they are always ready for instant use.



The scale on the flow meter can be rotated to ensure visibility in any situation and the installed attitude is not critical, though whenever possible the unit should be monitored with pressure gauge vertical and gauge case relief valve uppermost. **The unit is designed for flow to be in the direction of the arrow on the flow meter scale and must not be installed with the flow reversed**

Safety

An axial flow restrictor valve is fitted which can be adjusted under full load from open to fully closed, and to complete the specification, a safety blow out disc, set to operate at 455 bar is fitted to the manifold in a position facing away from the operator when reading the gauges normally. Two spare blow out discs are supplied which are easily replaced by removing the hexagonal plug on the gauge manifold.

- Speedy diagnosis of hydraulic circuit faults
- Flows ranging from 2-360 L/min
- Measuring flow, pressure and temperature
- Portable. No power source required
- Hydrotrac unit for flows from 2-110 L/min available

Working Temperature:
0°C to +100°C
Flow Range:
10-110 L/min

Maximum Working Pressure:
350 bar

BSPP

0045	Thread
4121	3/4"

HYDRAULIC FLOW METERING



Dataflow 4-20mA & Pulse Output Flow Transmitters



- Pulse output available for totalising/batching
- Works in any plane
- Accepts reverse flow
- Maximum flow 150 L/min
- Negligible pressure drop
- Pressures up to 10 bar
- Low cost. Simple to install
- For use with most liquids
- DIN connection

Construction:

Borosilicate glass tube, Nitrile seals.

Body: Glass filled nylon
Rotor and Locator: Acetal.
Washers and shaft: Stainless steel.
Rotor Tips: Stainless steel.

Minimum Flow:

2 L/min (Max 150 L/min). Accepts reverse flow.

Accuracy: ±2%.

Connection: 1" BSP.

Weight: 0.7kg.

Calibration 4-20mA:

4-20mA = 0-100 L/min on water.
 4mA = 0 L/min, 20mA = 100 L/min.

Pulse Output: K factors CE.

Oil: 51.14 pulses per litre.
 Water: 44.25 pulses per litre.

Electrical Details:

4-20mA:

Supply = 24V DC. Output = 4-20mA.

Pulse Output:

Supply = 24V DC-pulse output.
 (open collector transistor).

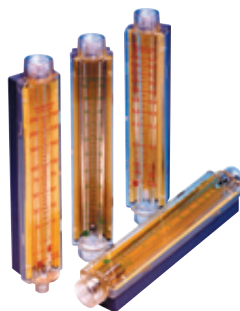
Working Temperature:
 +5°C to +80°C Oil
 +5°C to +60°C Water

Maximum Working Pressure:
 10 bar oil/water

Dataflow Transmitters

0045	Description
DFT980	Dataflow Pulse Output Transmitter

Loflow Oil, Water & Air Flowmeters



- Flow measurement from 7.0 ml/min to 22 L/min
- Easy to read, permanent printed scales
- Large scale definition for precise measurement
- Easy panel mounting assembly
- Negligible pressure drop characteristics
- 10 bar pressure rating

Construction:

Body: Grillon TR55.
Back Body: ABS7020.
Ball Retainer: ABS7020.
Back Panel: PVC.

Accuracy: ±2% FSD.

Repeatability: ±1%.

Connections:

Inlet 1/4" or 3/4" tapered threads.
 Outlet 3/4" tapered threads.

Typical Applications:

- Monitoring inert gases for the welding industry
- Pollution monitoring
- Pharmaceutical industry
- Filtration systems
- Hospital equipment for water applications
- Water treatment
- Swimming pools

Water BSPT, Inlet

0045	Media	Thread	LPM	Float Material
LF2020	Water	3/4"	0.2-2.0	Acetal
LF2100	Water	3/4"	1.5-10.0	S/S
LF2220	Water	3/4"	2.0-22.0	S/S

Tech Sheet 10321

Air BSPT, Inlet

0045	Media	Thread	LPM	Float Material
LF3007E	Air	1/4"	1-7.0	Acetal
LF3050E	Air	3/4"	10-50.0	Acetal
LF3135E	Air	3/4"	20-135.0	Acetal
LF3330E	Air	3/4"	1.5-5.5 l/sec	S/S
LF3720E	Air	3/4"	1-12.0 l/sec	S/S

Tech Sheet 10321

Oil BSPT, Inlet

0045	Media	Thread	LPM	Float Material
LF1002	Oil	3/4"	0.010-0.20	S/S
LF1009	Oil	3/4"	0.1-0.9	Acetal
LF1090	Oil	3/4"	1.0-9.0	S/S

Tech Sheet 10321

Flowline Oil & Water Calibrated Flowmeters, Stainless Steel

- For flow measurement of corrosive or chemical media
- Works in any position
- Pressure up to 350 bar (5000psi)
- Flows up to 360 L/min
- Direct reading

Construction:

Stainless steel to BS970 316S

Calibration:

Oil = Specific gravity 0.856 at 20°
 Water = Specific gravity 1.0 at 20°

Viscosity Range: 10-200 centistokes

Accuracy: ±5% FSD

Repeatability: ±1% FSD

Minimum Scale: ±1% FSD 10% FSD.

Connections: BSPP

Seal: Viton

Wetted Parts:

Body, Thread, Adaptor, Piston etc:
 Cone Locknut Stainless steel BS 970316S 16

Magnet Encapsulation:

Stainless steel BS970/1:1991:316S31

Spring: Stainless steel to BS2056 EN58J



Working Temperature:
 -20°C to +105°C

Maximum Working Pressure:
 350 bar

Stainless Steel, BSPP, Red - Oil

0045	Thread	LPM	Max Pressure Bar
FM26332112	3/4"	5-55	350
FM26332212	3/4"	10-110	350

Stainless Steel, BSPP, Yellow - Water

0045	Thread	LPM	Max Pressure Bar
FM26332122	3/4"	5-55	350
FM26332222	3/4"	10-110	350

FLOW METERING



Compressed Air Flowmeters, Brass

Working Temperature:
-20°C to +90°C

Maximum Working Pressure:
41 bar

- Calibrated for direct reading of compressed air at 7 bar
- Works in any plane
- Calibrated at 7 bar and 20°C
- Flow ranges from 2-600 SCFM
- Maximum working pressure 41 bar

Construction:
Brass Body to BS2874 CZ114

Calibration:
Oil = Specific gravity 0.856 at 20°C
Water = Specific gravity 1.0 at 20°C

Viscosity Range: 10-200 centistokes

Accuracy: ±5% FSD

Repeatability: ±1% FSD

Minimum Scale: 10% FSD

Connections: BSPP

- Works in any position
- Flows up to 1100 L/min
- Direct reading
- Relatively insensitive to viscosity changes
- Oil or water calibrated



Brass, Blue - Air, BSPP

0045	Thread	SCFM	LPS
FM26223132	1/2"	5-50	2-25
FM26223232	1/2"	10-110	5-50

Flowline Oil & Water Calibrated Flowmeters, Brass

Working Temperature:
-20°C to +90°C

Maximum Working Pressure:
350 bar

Construction:
Brass body to BS2874 CZ114

Calibration:
Oil = Specific gravity 0.856 at 20°C

Viscosity Range: 10-200 centistokes

Accuracy: ±5% FSD

Repeatability: ±1% FSD

Minimum Scale: 10% FSD

Connections: BSPP

- Works in any position
- Pressure up to 350 bar (5000psi)
- Flows up to 360 L/min
- Direct reading
- Relatively insensitive to viscosity changes



Brass, Red - Oil, BSPP

0045	Thread	LPM	Max Pressure Bar
FM26122212	1/4"	0.5-4.5	350
FM26222112	1/2"	2-20	350
FM26322112	3/4"	5-55	350
FM26322212	3/4"	10-110	350

spradow
german engineering at your service

Customers who bought from this page also purchased
Hydraulic Test Points
see pages **268-272**



Tank Top Return Filter



1 bar By-pass,
7 bar Working Pressure, BSPP

0347	Thread	Micron
TTF-08B-10	1/2"	10
TTF-08B-25	1/2"	25
TTF-12B-10	3/4"	10
TTF-12B-25	3/4"	25
TTF-16B-10	1"	10
TTF-16B-25	1"	25
TTF-20B-10	1.1/4"	10
TTF-20B-25	1.1/4"	25

Tech Sheet 10051



Replacement Element
to suit TTF Housing

0347	To Suit	Micron
TTE-08-10	1/2"	10
TTE-08-10-A	1/2"	10ABS
TTE-08-25	1/2"	25
TTE-12-10	3/4"	10
TTE-12-10-A	3/4"	10ABS
TTE-12-25	3/4"	25
TTE-16-10	1"	10
TTE-16-10-A	1"	10ABS
TTE-16-25	1"	25
TTE-20-10	1.1/4"	10
TTE-20-10-A	1.1/4"	10ABS
TTE-20-25	1.1/4"	25

Tech Sheet 10051

Suction Strainers



149 Micron,
Nylon, BSPP

0347	To Suit	LPM
SS020-08	1/2"	20
SS030-12	3/4"	30
SS040-16	1"	40
SS080-20	1.1/4"	80
SS120-24	1.1/2"	120
SS200-24	1.1/2"	200
SS200-32	2"	200
SS300-40	2.1/2"	300
SS400-48	3"	400

Tech Sheet 10052

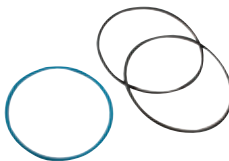


149 Micron,
Aluminium, BSPP

0347	To Suit	LPM
SSA020-08	1/2"	20
SSA028-12	3/4"	28
SSA040-16	1"	40
SSA060-20	1.1/4"	60
SSA080-24	1.1/2"	80
SSA120-24	1.1/2"	120
SSA160-32	2"	160
SSA200-32	2"	200
SSA300-40	2.1/2"	300
SSA400-40	3"	400

Tech Sheet 20010

TTF Seal Kit



Seal Kit to suit TTF Housing

0347	To Suit
TTF-SK-08	1/2"
TTF-SK-12	3/4"
TTF-SK-16	1"
TTF-SK-20	1.1/4"

Return Line Diffuser



BSPP

0347	Thread	LPM
RLD-12	3/4"	50
RLD-16	1"	100
RLD-20	1.1/4"	200
RLD-24	1.1/2"	300
RLD-32	2"	400
RLD-40	2.1/2"	500
RLD-48	3"	600

Tech Sheet 10053

Aluminium In-line Heavy-duty Return Filter

Suction and no by-pass models
available on request

Maximum Working
Temperature:
+80°C

Maximum Working
Pressure:
20 bar



1 bar By-pass, BSPP

0347	Thread	Micron
ILRF1-08-10	1/2"	10
ILRF1-08-25	1/2"	25
ILRF2-12-10	3/4"	10
ILRF2-12-25	3/4"	25
ILRF2-16-10	1"	10
ILRF2-16-25	1"	25
ILRF3-20-10	1.1/4"	10
ILRF3-20-25	1.1/4"	25
ILRF3-24-10	1.1/2"	10
ILRF3-24-25	1.1/2"	25

Tech Sheet 10215

Absolute and stainless steel mesh
elements available on request



Replacement Element
to suit ILFR*

0347	To Suit	Micron
ILFE-1-10	ILFR1	10
ILFE-1-25	ILFR1	25
ILFE-2-10	ILFR2	10
ILFE-2-25	ILFR2	25
ILFE-3-10	ILFR3	10
ILFE-3-25	ILFR3	25

Tech Sheet 10215

HYDRAULIC ACCESSORIES



Spin-on Filter Assemblies

- Disposable spin-on element
- Die-cast aluminium head
- 5 sizes, flows to 200 L/min
- 2232 Bypass standard 1 bar (suction 0.2 bar)
- For use with mineral/petroleum based oils

Maximum Working Temperature:
+80°C

Maximum Working Pressure:
10 bar



In-line Return, BSPP

0347	Thread	Micron	LPM
SPR08-10-35	1/2"	10	35
SPR08-10-70	1/2"	10	70
SPR08-10-100	1/2"	10	100
SPR08-25-35	1/2"	25	35
SPR08-25-70	1/2"	25	70
SPR08-25-100	1/2"	25	100
SPR12-10-35	3/4"	10	35
SPR12-10-70	3/4"	10	70
SPR12-10-100	3/4"	10	100
SPR12-25-35	3/4"	25	35
SPR12-25-70	3/4"	25	70
SPR12-25-100	3/4"	25	100
SPR16-10-35	1"	10	35
SPR16-10-70	1"	10	70
SPR16-10-100	1"	10	100
SPR16-25-35	1"	25	35
SPR16-25-70	1"	25	70
SPR16-25-100	1"	25	100
SPR20-10-150	1.1/4"	10	150
SPR20-10-200	1.1/4"	10	200
SPR20-25-150	1.1/4"	25	150
SPR20-25-200	1.1/4"	25	200

Tech Sheet 10054

In-line Suction, BSPP

0347	Thread	Micron	LPM
SPS08-10-35	1/2"	10	35
SPS08-10-70	1/2"	10	70
SPS08-10-100	1/2"	10	100
SPS08-25-35	1/2"	25	35
SPS08-25-70	1/2"	25	70
SPS08-25-100	1/2"	25	100
SPS12-10-35	3/4"	10	35
SPS12-10-70	3/4"	10	70
SPS12-10-100	3/4"	10	100
SPS12-25-35	3/4"	25	35
SPS12-25-70	3/4"	25	70
SPS12-25-100	3/4"	25	100
SPS16-10-35	1"	10	35
SPS16-10-70	1"	10	70
SPS16-10-100	1"	10	100
SPS16-25-35	1"	25	35
SPS16-25-70	1"	25	70
SPS16-25-100	1"	25	100
SPS20-10-150	1.1/4"	10	150
SPS20-10-200	1.1/4"	10	200
SPS20-25-150	1.1/4"	25	150
SPS20-25-200	1.1/4"	25	200

Tech Sheet 10054

Visual Indicator



Return, NPT

0347	Thread
VRG	1/8"

Tech Sheet 10054



Suction, NPT

0347	Thread
VSG	1/8"

Tech Sheet 10054

Return/Suction In-line Spin-on Filter Heads



Working Pressure 10 bar, BSPP Post, BSPP Ports

0347	Thread	Description
SRFH-08	1/2"	Return
SSFH-08	1/2"	Suction
SRFH-12	3/4"	Return
SSFH-12	3/4"	Suction
SRFH-16	1"	Return
SSFH-16	1"	Suction
SRFH-20	1.1/4"	Return
SSFH-20	1.1/4"	Suction

Tech Sheet 10054

Spin-on Element to suit S*FH



BSPP

0347	To Suit	Micron	LPM
SE-035-10-12	1/2"	10	35
SE-035-10A-12	1/2"	10ABS	35
SE-035-25-12	1/2"	25	35
SE-070-10-12	3/4"	10	70
SE-070-10A-12	3/4"	10ABS	70
SE-070-25-12	3/4"	25	70
SE-100-10-12	1"	10	100
SE-100-10A-12	1"	10ABS	100
SE-100-25-12	1"	25	100
SE-150-10-20	1.1/4"	10	150
SE-150-25-20	1.1/4"	25	150
SE-200-10-20	1.1/4"	10	200
SE-200-25-20	1.1/4"	25	200

Tech Sheet 10054

HIGH PRESSURE HYDRAULIC FILTRATION



Pressure line filters are an essential part in most hydraulic systems. When the hydraulic components are sophisticated, with close tolerances and a regulation function (not simply that of control), the use of filters in the pressure lines is a must.

The UFI Hydraulic Division pressure filters are named 'COMPO CARE' because they take care of system components, ensuring the recommended cleanliness levels. Filter elements are manufactured from glass fibre and cellulose media

Materials:

- Cast iron head
- Steel bowl
- Steel bypass valve
- NBR nitrile seals (FKM fluoroelastomer on request)
- Brass indicator housing

Pressures: (ISO 10771-1:2002)

- Maximum working: 42 MPa (420 bar)
- Test: 62 MPa (620 bar)
- Bursting: 126 MPa (1.260 bar)
- Collapse differential for the filter element (ISO 2941):
 - Series standard 2 MPa (20 bar)
 - Series H+ 21 MPa (210 bar)

PB Series Filters, 420 bar

Working Temperature:
-25°C to +110°C

Maximum Working Pressure: 420 bar

BSPP Ported, No Indicator, Bypass 6 bar, 5 Micron

0526	Thread	Filter Element Size
FPB12B04CNFA03EX	1/2"	12
FPB13B06CNFA03EX	3/4"	13
FPB21B08CNFA03EX	1"	21
FPB31B10CNFA03EX	1.1/4"	31
FPB33B12CNFA03EX	1.1/2"	33
FPB34B12CNFA03EX	1.1/2"	34

Tech Sheet 68074

BSPP Ported, No Indicator, Bypass 6 bar, 12 Micron

0526	Thread	Filter Element Size
FPB12B04CNFC03EX	1/2"	12
FPB13B06CNFC03EX	3/4"	13
FPB21B08CNFC03EX	1"	21
FPB31B10CNFC03EX	1.1/4"	31
FPB33B12CNFC03EX	1.1/2"	33
FPB34B12CNFC03EX	1.1/2"	34

Tech Sheet 68074



BSPP Ported, No Indicator, Bypass 6 bar, 7 Micron

0526	Thread	Filter Element Size
FPB12B04CNFB03EX	1/2"	12
FPB13B06CNFB03EX	3/4"	13
FPB21B08CNFB03EX	1"	21
FPB31B10CNFB03EX	1.1/4"	31
FPB33B12CNFB03EX	1.1/2"	33
FPB34B12CNFB03EX	1.1/2"	34

Tech Sheet 68074

BSPP Ported, No Indicator, Bypass 6 bar, 21 Micron

0526	Thread	Filter Element Size
FPB12B04CNFD03EX	1/2"	12
FPB13B06CNFD03EX	3/4"	13
FPB21B08CNFD03EX	1"	21
FPB31B10CNFD03EX	1.1/4"	31
FPB33B12CNFD03EX	1.1/2"	33
FPB34B12CNFD03EX	1.1/2"	34

Tech Sheet 68074

The UFI Hydraulic Division clogging indicators give an exact indication of the proper time to replace the filter element



Clogging Indicators, Visual

0526	Cracking Pressure Bar
5E-PBIND	5
5F-PBIND	8

Tech Sheet 68074



Clogging Indicators, Electrical

0526	Cracking Pressure Bar
6E-PBIND	5
6F-PBIND	8

Tech Sheet 68074



Clogging Indicators, LED Electrical, 24V

0526	Cracking Pressure Bar
7E-PBIND	5
7F-PBIND	8

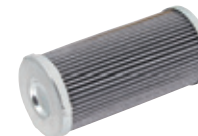
Tech Sheet 68074

Replacement Fibre Elements

0526	Filter Element Size	Micron
EPB12NFA	12	5
EPB12NFB	12	7
EPB12NFC	12	12
EPB12NFD	12	21
EPB13NFA	13	5
EPB13NFB	13	7
EPB13NFC	13	12
EPB13NFD	13	21

0526	Filter Element Size	Micron
EPB21NFA	21	5
EPB21NFB	21	7
EPB21NFC	21	12
EPB21NFD	21	21
EPB31NFA	31	5
EPB31NFB	31	7
EPB31NFC	31	12
EPB31NFD	31	21

0526	Filter Element Size	Micron
EPB33NFA	33	5
EPB33NFB	33	7
EPB33NFC	33	12
EPB33NFD	33	21
EPB34NFA	34	5
EPB34NFB	34	7
EPB34NFC	34	12
EPB34NFD	34	21



HIGH PRESSURE HYDRAULIC FILTRATION



The UFI Hydraulic Division pressure filters are named 'COMPO CARE' because they take care of system components, ensuring the recommended cleanliness levels.

Filter elements are manufactured from glass fibre and cellulose media

Materials:

- Anodized aluminium alloy housing
- Steel bypass valve
- NBR nitrile seals (FKM fluoroelastomer on request)
- Brass indicator housing

Pressures: (ISO 10771-1:2002)

- Maximum working: 21 MPa (210 bar)
- Test: 33 MPa (330 bar)
- Bursting: 66 MPa (660 bar)
- Collapse differential for the filter element (ISO 2941): 2,1 MPa (21 bar)

Compatibility: (ISO 2943:1999)

- Full with fluids: HH-HL-HM-H -HTG (according to ISO 6743/4)

PM Series Filters, 210 bar

Working Temperature:
-25°C to +110°C

Maximum Working Pressure: 210 bar



BSPP Ported, No Indicator, Bypass 6 bar, 5 Micron

0526	Thread	Filter Element Size
FPM21B04CNFA03XX	1/2"	21
FPM22B06CNFA03XX	3/4"	22
FPM22B08CNFA03XX	1"	22

Tech Sheet 68075

BSPP Ported, No Indicator, Bypass 6 bar, 7 Micron

0526	Thread	Filter Element Size
FPM21B04CNFB03XX	1/2"	21
FPM22B06CNFB03XX	3/4"	22
FPM22B08CNFB03XX	1"	22

Tech Sheet 68075



Replacement Fibre Elements

0526	Filter Element Size	Micron
EPB22NFA	22	5
EPB22NFB	22	7
EPB22NFC	22	12
EPB22NFD	22	21

Tech Sheet 68075

BSPP Ported, No Indicator, Bypass 6 bar, 12 Micron

0526	Thread	Filter Element Size
FPM21B04CNFC03XX	1/2"	21
FPM22B06CNFC03XX	3/4"	22
FPM22B08CNFC03XX	1"	22

Tech Sheet 68075

BSPP Ported, No Indicator, Bypass 6 bar, 21 Micron

0526	Thread	Filter Element Size
FPM21B04CNFD03XX	1/2"	21
FPM22B06CNFD03XX	3/4"	22
FPM22B08CNFD03XX	1"	22

Tech Sheet 68075



For **Clogging Indicators**
see page 257

Materials:

- Aluminium alloy head
- Steel bowl
- NBR nitrile bypass valve (FKM fluoroelastomer on request)
- NBR nitrile seals (FKM fluoroelastomer on request)
- Brass indicator housing

Compatibility: (ISO 2943:1999)

- Full with fluids: HH-HL-HM-H -HTG (according to ISO 6743/4)

Pressures:

- (ISO 10771-1:2002)
- Maximum working: 5 MPa (50 bar)
 - Fatigue test: 0-5 Mpa (0-50 bar) 1 million cycles
 - Collapse differential for the filter element (ISO 2941): 1 MPa (10 bar)

PG Series Filters, 50 bar

Working Temperature:
-25°C to +110°C

Maximum Working Pressure: 50 bar



BSPP Ported, No Indicator, Bypass 3.5 bar, 12 Micron

0526	Thread	Filter Element Size
FPG20B06DNFC03CX	3/4"	20
FPG21B06DNFC03CX	3/4"	21
FPG22B08DNFC03CX	1"	22
FPG31B10DNFC03CX	1.1/4"	31

Tech Sheet 68076

BSPP Ported, No Indicator, Bypass 6 bar, 21 Micron

0526	Thread	Filter Element Size
FPG20B06DNFD03CX	3/4"	20
FPG21B06DNFD03CX	3/4"	21
FPG22B08DNFD03CX	1"	22
FPG31B10DNFD03CX	1.1/4"	31

Tech Sheet 68076



Replacement Fibre Elements

0526	Filter Element Size	Micron
EPG20NFA	20	5
EPG20NFB	20	7
EPG20NFC	20	12
EPG20NFD	20	21
EPG21NFA	21	5
EPG21NFB	21	7
EPG21NFC	21	12
EPG21NFD	21	21
EPG22NFA	22	5
EPG22NFB	22	7
EPG22NFC	22	12
EPG22NFD	22	21
EPG31NFA	31	5
EPG31NFB	31	7
EPG31NFC	31	12
EPG31NFD	31	21

Tech Sheet 68076

HYDRAULIC FILTRATION



The UFI Hydraulic Division return filters are named 'ANK CARE' because they take care of the oil returning into the tank, ensuring the fluid cleanliness level to be within the required values. Nominal flow rates up to 2.400 L/mi (635 GPM). Degree of filtration is from 5µm(c) to 90µm. Filter elements are glass fibre, cellulose and metal wire mesh media.

Materials:

- Aluminium alloy head and cover
- Polyamide bowl for FRA21-31-32-33-41
- Zinc-plated steel bowl for FRA41-42-51-52-53-5D
- Polyamide bypass valve
- NBR nitrile seals (FKM fluoroelastomer on request)
- Brass indicator housing

Compatibility: (ISO 2943:1999)

- Full with fluids: HH-HL-HM-H -HTG (according to ISO 6743/4)

RA Series Filters, Tank Return

Working Temperature:
-25°C to +110°C

Maximum Working Pressure: 3 bar

BSPP Ported, Visual Indicator, Bypass 1.7 bar, 12 Micron

0526	Thread	Filter Element Size
FRA21B04BNFC32WX	1/2"	21
FRA31B06BNFC32WX	3/4"	31
FRA32B08BNFC32WX	1"	32
FRA41B10BNFC32WX	1.1/4"	41
FRA51B12BNFC32WX	1.1/2"	51
FRA53B16BNFC32WX	2"	53

Tech Sheet 68077

BSPP Ported, Visual Indicator, Bypass 1.7 bar, 21 Micron

0526	Thread	Filter Element Size
FRA21B04BNFD32WX	1/2"	21
FRA31B06BNFD32WX	3/4"	31
FRA32B08BNFD32WX	1"	32
FRA41B10BNFD32WX	1.1/4"	41
FRA51B12BNFD32WX	1.1/2"	51
FRA53B16BNFD32WX	2"	53

Replacement Fibre Elements

0526	Filter Element Size	Micron
ERA21NFC	21	12
ERA31NFC	31	12
ERA32NFC	32	12
ERA41NFC	41	12
ERA51NFC	51	12
ERA53NFC	53	12
ERA21NFD	21	21
ERA31NFD	31	21
ERA32NFD	32	21
ERA41NFD	41	21
ERA51NFD	51	21
ERA53NFD	53	21

Materials:

- Aluminium alloy head
- Steel spin-on cartridge
- Polyamide bypass valve
- NBR nitrile seals (FKM fluoroelastomer on request)
- Brass indicator housing

Pressures: (ISO 10771-1:2002)

- Maximum working: 1,2 MPa (12 bar)
- Test: 1,5 MPa (15 bar)
- Bursting: 2,5 MPa (25 bar)
- Collapse differential for the filter element (ISO 2941): 400 kPa (4 bar)

Compatibility: (ISO 2943:1999)

- Full with fluids: HH-HL-HM-HR-HV-HG (according to ISO 6743/4)

PE Series Filters, Spin-on

Maximum Working Pressure: 12 bar

Working Temperature:
-25°C to +110°C

Single, BSPP Ported, Visual Indicator, Bypass 1.7 bar, 12 Micron

0526	Thread	Filter Element Size
FPE11B06BNFC31XX	3/4"	11
FPE12B06BNFC31XX	3/4"	12
FPE21B10BNFC31XX	1.1/4"	21
FPE22B10BNFC31XX	1.1/4"	22

Twin, BSPP Ported, Visual Indicator, Bypass 1.7 bar, 12 Micron

0526	Thread	Filter Element Size
FPE31B12BNFC31XX	1.1/2"	31
FPE32B12BNFC31XX	1.1/2"	32

Dual, BSPP Ported, Visual Indicator, Bypass 1.7 bar, 12 Micron

0526	Thread	Filter Element Size
FPE41B12BNFC31XX	1.1/2"	41
FPE42B12BNFC31XX	1.1/2"	42

Replacement Fibre Elements

0526	Filter Element Size	Micron
ESE11NFA	11	5
ESE11NFB	11	7
ESE11NFC	11	12
ESE11NFD	11	21
ESE12NFA	12	5
ESE12NFB	12	7
ESE12NFC	12	12
ESE12NFD	12	21
ESE21NFA	21	5
ESE21NFB	21	7
ESE21NFC	21	12
ESE21NFD	21	21
ESE22NFA	22	5
ESE22NFB	22	7
ESE22NFC	22	12
ESE22NFD	22	21

Tech Sheet 68078

The UFI Hydraulic Division clogging indicator gives an exact indication of the proper time to replace the filter element



Clogging Indicators, Visual

0526	Thread
31-PEIND	1/8"

Magnetic Tank Cleaner



M12 Thread, 57mm OD

0347	Length mm
MTC-300	300
MTC-450	450
MTC-525	525
MTC-600	600

Tech Sheet 10055

Fluid Sight Glass



BSPP

0347	Thread
SG-12	3/4"
SG-16	1"
SG-20	1.1/4"
SG-24	1.1/2"

Tech Sheet 10060

Weldable Flange to suit SG-**



BSPP

0347	Thread
WF-12	3/4"
WF-16	1"
WF-20	1.1/4"
WF-24	1.1/2"

Tech Sheet 10060

Sight Glasses

- Housing and reflector in aluminium, sight glass in polyamide, transparent, high mechanical stability, non-ageing
- Fluid Compatibility: Mineral based oils and solvents

° Maximum Working Temperature:
+100°C

⌚ Maximum Working Pressure:
3 bar



Aluminium Oil Level Sight Glasses, BSPP

0027	Thread	Hex Size mm
K561020014	1/4"	18
K561024038	3/8"	22
K561029012	1/2"	27

Tech Sheet 10473

- Housing in polyamide, transparent, high mechanical stability, non-ageing
- Fluid Compatibility: Mineral based oils and solvents

° Maximum Working Temperature:
+100°C

⌚ Maximum Working Pressure:
3 bar



Plastic Oil Sight Glasses, BSPP

0027	Thread	Hex Size mm
K5604120014	1/4"	17
K5604122038	3/8"	18
K5604128012	1/2"	24
K5604135034	3/4"	30
K5604143100	1"	35
K5604151114	1.1/4"	42
K5604158112	1.1/2"	50
K5604174200	2"	64
K56041201415	M14 x 1.5	17
K56041221615	M16 x 1.5	18
K56041251815	M18 x 1.5	21
K56041282015	M20 x 1.5	24

Tech Sheet 10472

Plastic Oil Sight Glasses with Reflector, BSPP

0027	Thread	Hex Size mm
K5604222038	3/8"	18
K5604228012	1/2"	24
K5604235034	3/4"	30
K5604243100	1"	35
K5604251114	1.1/4"	42
K5604258112	1.1/2"	50
K5604274200	2"	64
K56042221615	M16 x 1.5	18
K56042251815	M18 x 1.5	21
K56042282015	M20 x 1.5	24

Tech Sheet 10472

- Housing in polyamide, transparent, high mechanical stability, non-ageing
 - Fluid Compatibility: Mineral based oils and solvents
- NOTE:** For use with a tank with a minimum wall thickness of 5mm. Not suitable for pressurised tanks

° Maximum Working Temperature:
+100°C



Push-in Plastic Oil Sight Glasses with Reflector

0027	OD mm
K56062420	20
K56063026	26
K56063632	32
K56064238	38
K56064440	40

Tech Sheet 10471

- Shock resistant
- Transparent polyamid reflector
- Anodised aluminium reflector
- Buna-n seal
- For use with mineral, petroleum and water-based fluid
- Any contact with alcohol or solvents must be avoided

° Maximum Working Temperature:
+100°C

⌚ Maximum Working Pressure:
3 bar



Dome Oil Level Sight Glasses, BSPP

0027	Thread	Hex Size mm
K560822038	3/8"	19
K560828012	1/2"	24
K560835034	3/4"	30
K560842100	1"	36

Tech Sheet 10470

Fluid Level Gauge

Without Thermometer

0347	Bolt Thread	Hole Centres mm
FLGS-76	12	76
FLGS-76-10	10	76
FLGS-127	12	127
FLGS-127-10	10	127
FLGS-254	12	254
FLGS-254-10	10	254

Tech Sheet 10060



With Thermometer

0347	Bolt Thread	Hole Centres mm
FLTGS-76	12	76
FLTGS-76-10	10	76
FLTGS-127	12	127
FLTGS-127-10	10	127
FLTGS-254	12	254
FLTGS-254-10	10	254

Tech Sheet 10060

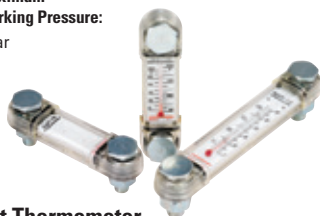


Oil Level Indicators

- Housing in polyamide, transparent, high mechanical stability, non-ageing
- Fluid Compatibility:
Mineral based oils and petroleum based fluids
- Plastic mount and frame allowing for side reading

Working Temperature:
-30°C to +100°C

Maximum Working Pressure:
1 bar



Without Thermometer

0027	Bolt Thread	Hole Centres mm	Length mm
K56001076	M10 x 1.5	76	103
K56001127	M12 x 1.75	127	154

Tech Sheet 10483

With Thermometer

0027	Bolt Thread	Hole Centres mm	Length mm
K56002076	76	M10 x 1.5	103
K56002127	127	M12 x 1.75	154

Tech Sheet 10483

Filler Breathers



Chrome Plated Steel, 40 Micron

0347	OD mm	Description
SFB-3-40	28	3 Bolt Mount
SFB-6-40	48	6 Bolt Mount
SFB-6-40-HN	48	6 Bolt Mount High Neck
SFB-6-40-SM	101.6	Side Mount

Tech Sheet 10056

- Material Body: Thermoplastic polyamide 66
- Strainer: Thermoplastic polypropylene
- Filter: Polyurethane foam 50µm
- Fluid Compatibility: Mineral based oils and solvents

Maximum Working Temperature:
+90°C



Plastic, Push-in

0027	OD mm	Length mm
K5670706020	55	88

Tech Sheet 10484

Desiccant Breather



10 Micron, 2" NPT

0347	LPM
DB-1000	1000
DB-1500	1500
DB-2400	2400

Tech Sheet 10059

Breather



Chrome Plated Steel, 40 Micron, BSPP

0347	Thread
SB-04B	1/4"
SB-08B	1/2"
SB-12B	3/4"



ABS, 40 Micron, BSPP

0347	Thread
ABSB-06B	3/8"
ABSB-08B	1/2"
ABSB-12B	3/4"
ABSB-16B	1"

Tech Sheet 10057



Giant Breather, BSPP

0347	Thread	Micron
GTB-12-10	3/4"	10
GTB-12-25	3/4"	25
GTB-20-10	1.1/4"	10
GTB-20-25	1.1/4"	25

Tech Sheet 10058

5 PSI Pressurised Breather



Chrome Plated Steel, 40 Micron, BSPP

0347	Thread
SPB-08B	1/2"
SPB-12B	3/4"

HYDRAULIC ACCESSORIES



Plugs

- Material: Elastomer, soft polyurethane
- Ideal for keeping threads clean when spraying tanks

Maximum Working Temperature:
+100°C

Working Pressure:
2 to 3 bar



Screw-in Protection Plugs, BSPP

0027	Thread
K5618018	1/8"
K5618014	1/4"
K5618038	3/8"
K5618012	1/2"
K5618034	3/4"
K5618100	1"

Tech Sheet 10474

Press-in Plugs

- Material: Thermoplastic polyamide 66
- Air Filter: Polyurethane foam
- Filter Fineness 50µm

NOTE: Not suitable for pressurised tanks



With Ventilation with Rubber O-Ring

0027	OD mm	Band Width mm
K562223018	18	8
K562323020	20	8
K562423026	26	9.5

Tech Sheet 10475

Without Ventilation with Rubber O-Ring

0027	OD mm	Band Width mm
K562213020	20	8
K562213030	30	9.5

Tech Sheet 10475

Plugs with Magnets

- Material: Aluminium

NOTE: Mounted on the bottom of tanks to attract metal parts



Aluminium, BSPP

0027	OD mm	Hex Size mm
K562621014	1/4"	19
K562624038	3/8"	22
K562630012	1/2"	27
K562636034	3/4"	34
K562642100	1"	40

Tech Sheet 10476

Vent Screws

- Material: Thermoplastic polyamide 66
- Air Filter: Polyurethane foam
- Fluid Compatibility: Mineral based oils and solvents

Maximum Working Temperature:
+100°C



With Oil Fill Symbol

0027	Thread
K5634136038	3/8"
K5634141012	1/2"
K5634147034	3/4"
K5634152100	1"
K5634163114	1.1/4"
K5634163112	1.1/2"
K56341361615	M16 x 1.5
K56341411815	M18 x 1.5
K56341412015	M20 x 1.5
K56341412215	M22 x 1.5

Tech Sheet 10477

With Oil Fill Symbol & Filter

0027	Thread
K5634236038	3/8"
K5634241012	1/2"
K5634247034	3/4"
K5634252100	1"
K5634263114	1.1/4"
K5634263112	1.1/2"
K56342361615	M16 x 1.5
K56342411815	M18 x 1.5
K56342412215	M22 x 1.5

Tech Sheet 10477



With Splash Guard, Filter & Oil Symbol, BSPP

0027	Thread
K563630014	1/4"
K563630038	3/8"
K563630012	1/2"

Tech Sheet 10478

Brass Vent Screws

- Material: Housing and cap in brass filter in galvanized steel wire 50-60µm



Filter & Vent, BSPP

0027	Thread
K564020014	1/4"
K564024038	3/8"
K564030012	1/2"

Tech Sheet 10481

Vent Screws with Dipstick

- Material: Black thermoplastic polyamide 66
- Filter: Polyurethane foam 50µm
- Dipstick: Galvanized steel
- Fluid Compatibility: Mineral based oils and solvents
- Dipstick Length: 200mm except non-return and splash back 195mm



With Vent, Filter & Fill Symbol

0027	Thread
K5654236038	3/8"
K5654241012	1/2"
K5654247034	3/4"
K5654252100	1"
K56542412015	M20 x 1.5

Tech Sheet 10479

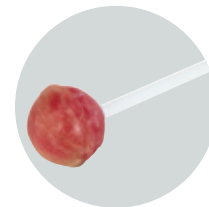


With Non-return Valve & Non-return Symbol, BSPP

0027	Thread
K563830014	1/4"
K563830038	3/8"
K563830012	1/2"

Tech Sheet 10480

Thinking Sticks



Traffic Light Lollipops

0166	Qty
LOL1	150



Hydraulic Pressure Gauges

This quality range of hydraulic glycerine-filled pressure gauges have been manufactured to the highest specification using quality materials.

The range includes stainless steel cased to complete stainless steel units with 40mm, 63mm and 100mm dials. Pressures range from 0-1 bar to 0-600 bar, with rear and bottom connections of 1/4" and 1/2" in BSPP and BSPT.

FT Pro gauges are tried, tested and used extensively throughout the world's manufacturing facilities and in the mobile plant industry.

For your peace of mind all gauges can be supplied with a calibration certificate at a nominal charge.

Applications:

- Hydraulics
- Construction
- Agriculture
- Mining
- OEM machine building
- Offshore
- Marine
- High pressure water applications
- Service kits



GLYCERINE GAUGES & ACCESSORIES



Stainless Steel Case, Bottom Connection

stainless
steel



BSPT

0021	Thread	Gauge Diameter mm	Pressure Range PSI	Pressure Range Bar
G63-001BG	1/4"	63	0-15	0-1
G63-002BG	1/4"	63	0-30	0-2
G63-004BG	1/4"	63	0-60	0-4
G63-006BG	1/4"	63	0-100	0-6
G63-012BG	1/4"	63	0-200	0-12
G63-020BG	1/4"	63	0-300	0-20
G63-025BG	1/4"	63	0-400	0-25
G63-040BG	1/4"	63	0-600	0-40
G63-060BG	1/4"	63	0-1000	0-60
G63-120BG	1/4"	63	0-2000	0-120
G63-200BG	1/4"	63	0-3000	0-200
G63-250BG	1/4"	63	0-4000	0-250
G63-400BG	1/4"	63	0-6000	0-400
G63-600BG	1/4"	63	0-9000	0-600
VG63-01BG	1/4"	63	-30" Hg	-1 bar

Tech Sheet 20593

stainless
steel



BSPP

0021	Thread	Gauge Diameter mm	Pressure Range PSI	Pressure Range Bar
PG63-001BG	1/4"	63	0-15	0-1
PG63-002BG	1/4"	63	0-30	0-2
PG63-004BG	1/4"	63	0-60	0-4
PG63-006BG	1/4"	63	0-100	0-6
PG63-012BG	1/4"	63	0-200	0-12
PG63-014BG	1/4"	63	0-200	0-14
PG63-020BG	1/4"	63	0-300	0-20
PG63-025BG	1/4"	63	0-400	0-25
PG63-040BG	1/4"	63	0-600	0-40
PG63-060BG	1/4"	63	0-1000	0-60
PG63-120BG	1/4"	63	0-2000	0-120
PG63-200BG	1/4"	63	0-3000	0-200
PG63-250BG	1/4"	63	0-4000	0-250
PG63-400BG	1/4"	63	0-6000	0-400
PG63-600BG	1/4"	63	0-9000	0-600

Tech Sheet 20594

Stainless Steel Case, Centre Back Connection

See Panel Mount Bracket Options:
G63-PM & G63-PM-RHOMB

stainless
steel



BSPT

0021	Thread	Gauge Diameter mm	Pressure Range PSI	Pressure Range Bar
G63-001RG	1/4"	63	0-15	0-1
G63-002RG	1/4"	63	0-30	0-2
G63-004RG	1/4"	63	0-60	0-4
G63-006RG	1/4"	63	0-100	0-6
G63-010RG	1/4"	63	0-160	0-10
G63-012RG	1/4"	63	0-200	0-12
G63-020RG	1/4"	63	0-300	0-20
G63-025RG	1/4"	63	0-400	0-25
G63-040RG	1/4"	63	0-600	0-40
G63-060RG	1/4"	63	0-1000	0-60
G63-120RG	1/4"	63	0-2000	0-120
G63-200RG	1/4"	63	0-3000	0-200
G63-250RG	1/4"	63	0-4000	0-250
G63-400RG	1/4"	63	0-6000	0-400
G63-600RG	1/4"	63	0-9000	0-600
VG63-01RG	1/4"	63	-30" Hg	-1 bar

Tech Sheet 20595

See Panel Mount Bracket Options:
G63-PM & G63-PM-RHOMB

stainless
steel



BSPP

0021	Thread	Gauge Diameter mm	Pressure Range PSI	Pressure Range Bar
PG63-001RG	1/4"	63	0-15	0-1
PG63-002RG	1/4"	63	0-30	0-2
PG63-004RG	1/4"	63	0-60	0-4
PG63-006RG	1/4"	63	0-100	0-6
PG63-012RG	1/4"	63	0-200	0-12
PG63-020RG	1/4"	63	0-300	0-20
PG63-025RG	1/4"	63	0-400	0-25
PG63-040RG	1/4"	63	0-600	0-40
PG63-060RG	1/4"	63	0-1000	0-60
PG63-120RG	1/4"	63	0-2000	0-120
PG63-200RG	1/4"	63	0-3000	0-200
PG63-250RG	1/4"	63	0-4000	0-250
PG63-400RG	1/4"	63	0-6000	0-400
PG63-600RG	1/4"	63	0-9000	0-600

Tech Sheet 20596

Panel Mounting Brackets

stainless
steel



For G63 & PG63 Centre Back Connection
below 100 bar

0021
G63-PM

stainless
steel



For G63 & PG63 Centre Back Connection
above 100 bar

0021
G63-PM-RHOMB

Gauge Snubbers

Working Pressure:
20 to 300 bar



High Pressure

0234	Male Thread	Female Thread
130.4	1/4"	1/4"
130.3	3/8"	3/8"
130.2	1/2"	1/2"

Tech Sheet 28

Gauge snubbers are a great way of protecting gauges from damage, with sudden impact pressure i.e. when full line pressure is introduced to the gauge damage can occur. With the use of the snubber the gauge will be protected.

Working Pressure:
0 to 20 bar



Low Pressure

0234	Male Thread	Female Thread
131.8	1/8"	1/8"
131.4	1/4"	1/4"
131.3	3/8"	3/8"
131.2	1/2"	1/2"

Tech Sheet 28

Back Rubber Gauge Protectors



0021	Description
G63-OB	Open
G63-CB	Closed

TEMPERATURE GAUGES



Bi-metallic Thermometers, Centre Back Connection

 Pressure Rating
of Thermowell:
6 bar max



63mm & 100mm Diameter, Aluminium Case, 1/2" BSPP

0056	Gauge Diameter mm	Temperature Range °C
WTG63-60	63	0-60
WTG63-120	63	0-120
WTG63-200	63	0-200
WTG100-60	100	0-60
WTG100-120	100	0-120
WTG100-200	100	0-200

Tech Sheet 10526

Refrigeration Gauges, Plastic Case, Bottom Connection



63mm Diameter, 7/16" UNF, 1/4" Flare

0056	Temperature Range °C
WG63-716B-1/9	-1/+9

All pressure gauges can be supplied with a calibration certificate at a nominal charge.
Please call our Business Development Team for price and delivery.



Customers who bought from
this page also purchased
Hydraulic Test Points
see pages 268-272



GLYCERINE GAUGES



Heavy-duty, Bottom Connection

Accuracy:

63mm diameter: +/- 1.6%

100mm diameter: +/- 1.0%



63mm & 100mm Diameter, BSPP

0056	Thread	Gauge Diameter mm	Max Pressure Bar	Max Pressure PSI
WG63-14B-1G	1/4"	63	1	15
WG63-14B-1.6G	1/4"	63	1.6	25
WG63-14B-2.5G	1/4"	63	2.5	40
WG63-14B-4G	1/4"	63	4	60
WG63-14B-6G	1/4"	63	6	90
WG63-14B-10G	1/4"	63	10	160
WG63-14B-16G	1/4"	63	16	230
WG63-14B-25G	1/4"	63	25	400
WG63-14B-40G	1/4"	63	40	600
WG63-14B-60G	1/4"	63	60	900
WG63-14B-100G	1/4"	63	100	1600
WG63-14B-160G	1/4"	63	160	2300
WG63-14B-250G	1/4"	63	250	4000
WG63-14B-400G	1/4"	63	400	6000
WG63-14B-600G	1/4"	63	600	9000
WG100-38B-2.5G	3/8"	100	2.5	40
WG100-38B-4G	3/8"	100	4	60
WG100-38B-6G	3/8"	100	6	90
WG100-38B-10G	3/8"	100	10	160
WG100-38B-16G	3/8"	100	16	230
WG100-38B-40G	3/8"	100	40	600
WG100-12B-100G	1/2"	100	100	1600
WG100-12B-160G	1/2"	100	160	2300
WG100-12B-250G	1/2"	100	250	4000
WG100-12B-400G	1/2"	100	400	6000
WG100-12B-600G	1/2"	100	600	9000

Tech Sheet 10525

Heavy-duty, Centre Back Connection



63mm & 100mm Diameter, BSPP

0056	Thread	Gauge Diameter mm	Max Pressure Bar	Max Pressure PSI
WG63-14R-1G	1/4"	63	1	15
WG63-14R-1.6G	1/4"	63	1.6	25
WG63-14R-2.5G	1/4"	63	2.5	40
WG63-14R-4G	1/4"	63	4	60
WG63-14R-6G	1/4"	63	6	90
WG63-14R-10G	1/4"	63	10	160
WG63-14R-16G	1/4"	63	16	230
WG63-14R-25G	1/4"	63	25	400
WG63-14R-40G	1/4"	63	40	600
WG63-14R-60G	1/4"	63	60	900
WG63-14R-100G	1/4"	63	100	1600
WG63-14R-160G	1/4"	63	160	2300
WG63-14R-250G	1/4"	63	250	3600
WG63-14R-400G	1/4"	63	400	6000
WG63-14R-600G	1/4"	63	600	9000
WG100-38R-2.5G	3/8"	100	2.5	40
WG100-38R-4G	3/8"	100	4	60
WG100-38R-6G	3/8"	100	6	90
WG100-38R-10G	3/8"	100	10	160
WG100-38R-16G	3/8"	100	16	230
WG100-38R-40G	3/8"	100	40	600
WG100-12R-100G	1/2"	100	100	1600
WG100-12R-160G	1/2"	100	160	2300
WG100-12R-250G	1/2"	100	250	4000
WG100-12R-400G	1/2"	100	400	6000
WG100-12R-600G	1/2"	100	600	9000

Tech Sheet 10525

Vacuum Gauges, Bottom Connection

Accuracy:

63mm diameter: +/- 1.6%



63mm Diameter, 1/4" BSPP

0056	Max Pressure Hg	Max Pressure Bar
WG63-14B/-30HG	-30	-1

Tech Sheet 10525

Vacuum Gauges, Centre Back Connection



63mm Diameter, 1/4" BSPP

0056	Max Pressure Hg	Max Pressure Bar
WG63-14R/-30HG	-30	-1

Tech Sheet 10525

All Stainless Steel Gauges, 1/4" Bottom Connection



1/4" BSPP

0021	Gauge Diameter mm	Pressure Range PSI	Pressure Range Bar
SSG63-001BG	63	0-15	0-1
SSG63-004BG	63	0-60	0-4
SSG63-012BG	63	0-200	0-12
SSG63-025BG	63	0-400	0-25
SSG63-060BG	63	0-1000	0-60
SSG63-200BG	63	0-3000	0-200
SSG63-400BG	63	0-6000	0-400

Tech Sheet 20598

All Stainless Steel Gauges, 1/4" Centre Back Connection



1/4" BSPP

0021	Gauge Diameter mm	Pressure Range PSI	Pressure Range Bar
2020-0340	50	0-200	0-12
2020-0341	50	0-300	0-20
2020-0342	50	0-600	0-40
2020-0343	50	0-900	0-60
2020-0344	50	0-4000	0-250
2038-8534	63	0-200	0-12
2038-8567	63	0-900	0-60
2038-8575	63	0-4000	0-250

Tech Sheet 20600

All Stainless Steel Gauges, 1/2" Bottom Connection



1/2" BSPP

0021	Gauge Diameter mm	Pressure Range PSI	Pressure Range Bar
SHG100-002BG	100	0-30	0-2
SHG100-006BG	100	0-100	0-6
SHG100-016BG	100	0-250	0-16
SHG100-040BG	100	0-600	0-40
SHG100-100BG	100	0-1500	0-100
SHG100-250BG	100	0-4000	0-250
SHG100-600BG	100	0-9000	0-600

Tech Sheet 20599

All Stainless Steel Gauges, 1/2" Centre Back Connection



1/2" BSPP

0021	Gauge Diameter mm	Pressure Range PSI	Pressure Range Bar
2038-8435	100	0-200	0-12
2038-8443	100	0-300	0-20
2038-8450	100	0-600	0-40
2038-8476	100	0-4000	0-250

Tech Sheet 20601

Stainless Steel Case, Heavy-duty, Bottom Connection



1/2" BSPP

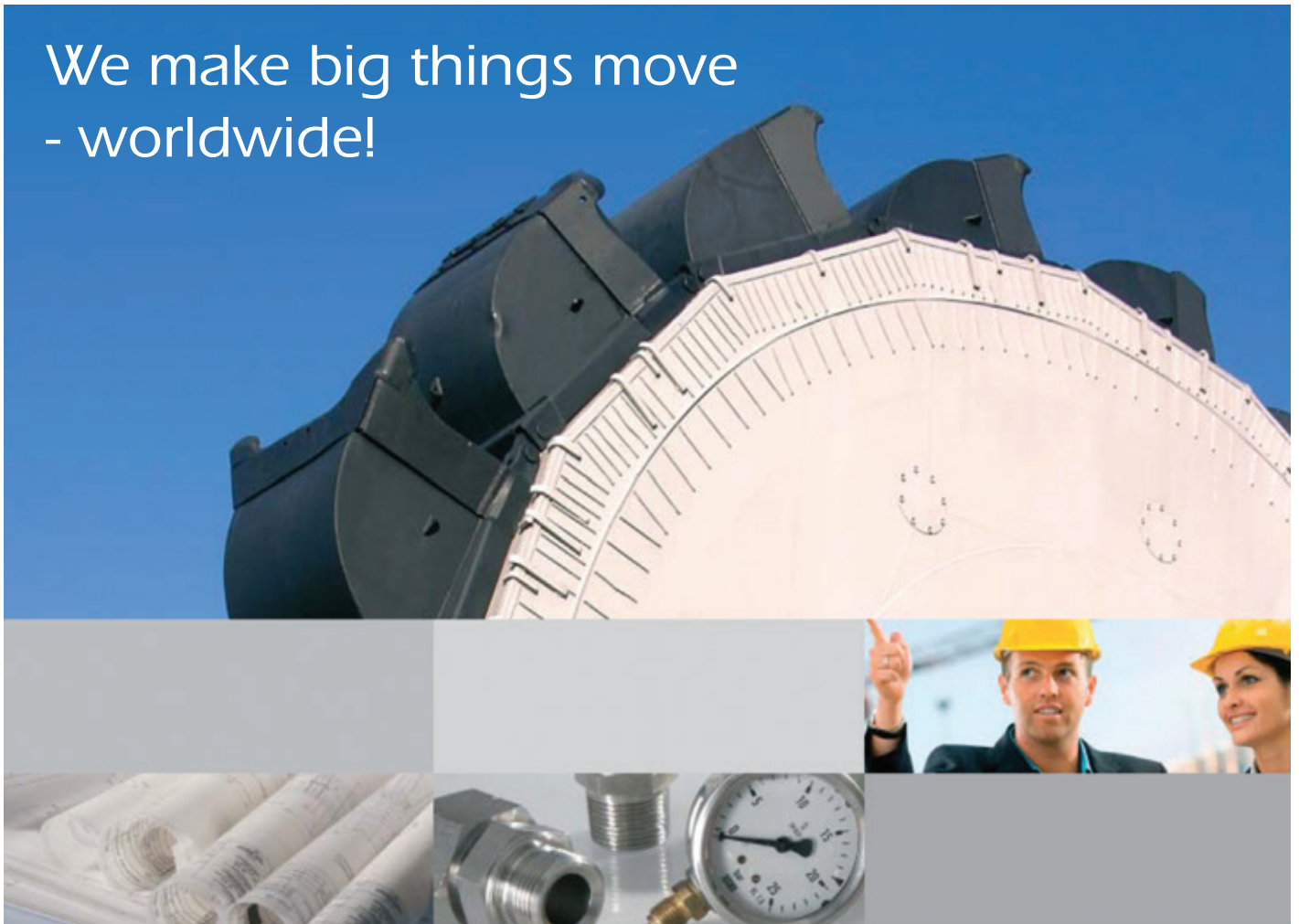
0021	Gauge Diameter mm	Pressure Range PSI	Pressure Range Bar
HG100-002G	100	0-36	0-2.5
HG100-004G	100	0-58	0-4
HG100-006G	100	0-87	0-6
HG100-010G	100	0-145	0-10
HG100-016G	100	0-232	0-16
HG100-040G	100	0-580	0-40
HG100-100G	100	0-1450	0-100
HG100-160G	100	0-2320	0-160
HG100-250G	100	0-3625	0-250
HG100-400G	100	0-5800	0-400

1/2" BSPT

0021	Gauge Diameter mm	Pressure Range PSI	Pressure Range Bar
HG100-002B	100	0-36	0-2.5
HG100-004B	100	0-58	0-4
HG100-006B	100	0-87	0-6
HG100-010B	100	0-145	0-10
HG100-016B	100	0-232	0-16
HG100-040B	100	0-580	0-40
HG100-100B	100	0-1450	0-100
HG100-160B	100	0-2320	0-160
HG100-250B	100	0-3625	0-250
HG100-400B	100	0-5800	0-400

Tech Sheet 20597

We make big things move
- worldwide!



HYDRAULICS you can count on!



TEST POINT COUPLINGS

Piston Valve Type, M16 x 2

Media Application:
Hydraulic and other oils on mineral oil basis.

Metal Cap -30°C to +100°C Sealings Buna N
Metal Cap -20°C to +200°C Sealings Viton



Test Coupling

0330	Thread	Max Pressure Bar
1-Z06-28-11-600	1/8" BSPP	400
1-Z06-29-11-600	1/4" BSPP	400
1-Z06-30-11-600	3/8" BSPP	400
1-Z06-22-11-600	M10 x 1.0	630
1-Z06-23-11-600	M12 x 1.5	630
1-Z06-24-11-600	M14 x 1.5	630
1-Z06-43-00-600	1/8" NPT	400
1-Z06-44-00-600	1/4" NPT	400
1-Z06-39-30-600	7/16" UNF	630
1-Z06-40-30-600	9/16" UNF	630

Tech Sheet 10292



Bulkhead Coupling

0330	Max Pressure Bar
1-Z80-48-60-040	630

Tech Sheet 10292



In-line Tee, BSPP

0330	Thread	Max Pressure Bar
1-Z10-68-00-600	1/4"	400
1-Z10-69-00-600	3/8"	400
1-Z10-70-00-600	1/2"	630
1-Z10-72-00-600	3/4"	630
1-Z10-73-00-600	1"	630

Tech Sheet 10292

stainless steel



316 Stainless Steel, BSPP

0330	OD mm	Max Pressure Bar
1-912-28-12-660	1/8"	400
1-912-29-12-660	1/4"	630

Tech Sheet 10292



DIN 2353 DKO Light-duty, Metric

0330	OD mm	Burst Pressure Bar
1-Z08-00-10-600	6L	1000
1-Z08-02-10-600	8L	1000
1-Z08-04-10-600	10L	1000
1-Z08-06-10-600	12L	1000

Tech Sheet 10292

DIN 2353 DKO Heavy-duty, Metric

0330	OD mm	Burst Pressure Bar
1-Z08-03-10-600	8S	1890
1-Z08-05-10-600	10S	1890
1-Z08-07-10-600	12S	1890

Tech Sheet 10292

Gauge Adaptors

stainless steel



316 Stainless Steel, BSPP

0330	Thread	Max Pressure Bar
1-940-31-22-080	1/2"	630

Tech Sheet 10292



Direct, BSPP

0330	Thread	Max Pressure Bar
1-927-29-01-020	1/4"	630
1-927-31-01-020	1/2"	630

Tech Sheet 10292



Hose/Gauge, BSPP

0330	Thread	Max Pressure Bar
1-918-29-01-240	1/4"	630
1-918-31-01-240	1/2"	630

Tech Sheet 10292

TEST POINT COUPLINGS

Ball Valve Type, M16 x 2



Maximum Working Pressure:
630 bar



Test Coupling

0330	Thread	Max Pressure Bar
1-906-22-11-600	M10 x 1.0	630
1-906-23-11-600	M12 x 1.5	630
1-906-24-11-600	M14 x 1.5	630
1-906-28-11-600	G1/8" BSPP	630
1-906-29-11-600	G1/4" BSPP	630
1-906-30-11-600	G3/8" BSPP	630
1-906-43-00-600	1/8" NPT	630
1-906-44-00-600	1/4" NPT	630
1-906-39-30-600	7/16" UNF	630
1-906-40-30-600	9/16" UNF	630

Tech Sheet 10292



Bulkhead Coupling

0330

1-980-48-60-040

Tech Sheet 10292



Maximum Working Pressure:
135 bar



DIN 2353 DKO Light-duty, Metric

0330	OD mm	Burst Pressure Bar
1-908-00-20-600	6L	630
1-908-02-20-600	8L	630
1-908-04-20-600	10L	630
1-908-06-20-600	12L	630

Tech Sheet 10292



DIN 2353 DKO Heavy-duty, Metric

0330	OD mm	Burst Pressure Bar
1-908-03-20-600	8S	1890
1-908-05-20-600	10S	1890
1-908-07-20-600	12S	1890

Tech Sheet 10292

316 Stainless Steel Test Points

Sealing by an elastomer captive profiled ring - Vito
Test connection: M16 x 2



Maximum Working Pressure:
630 bar

stainless
steel



Form C, BSPP

0330	Thread
MAS-G1/8-WD	1/8"
MAS-G1/4-WD	1/4"
MAS-G3/8-WD	3/8"
MAS-G1/2-WD	1/2"

400 bar Microbore Test Point Hose Assemblies



M16 x 2

0330	Length mm
1-970-04-04-010	200
1-970-04-04-040	400
1-970-04-04-060	630
1-970-04-04-080	800
1-970-04-04-090	1000
1-970-04-04-100	1500
1-970-04-04-110	2000
1-970-04-04-120	2500
1-970-04-04-130	3200
1-970-04-04-140	4000

Tech Sheet 10292



1/4" BSPP

0330	Length mm
1-970-02-04-010	200
1-970-02-04-030	300
1-970-02-04-050	500
1-970-02-04-060	630
1-970-02-04-080	800
1-970-02-04-090	1000
1-970-02-04-100	1500
1-970-02-04-110	2000
1-970-02-04-120	2500
1-970-02-04-140	4000

Tech Sheet 10292



1/2" BSPP

0330	Length mm
1-970-04-25-090	1000
1-970-04-25-100	1500
1-970-04-25-110	2000

Tech Sheet 10292

TEST POINT COUPLINGS

End Fitting to suit DN2 and DN4 Hose

Bespoke assemblies available on request



Test Female Straight

0330	Thread	Type	DN
2-971-04-02-001	M16 x 2	Knurled	2
2-971-04-04-001	M16 x 2	Knurled	4
2-971-10-02-001	M16 x 1.5	Knurled	2
2-971-10-04-001	M16 x 1.5	Knurled	4
2-971-12-02-001	S12 x 1.5	Knurled	2
2-971-12-04-001	S12 x 1.5	Knurled	4

Tech Sheet 60388



Test Female Straight

0330	Thread	Type	DN
2-971-03-02-001	M16 x 2	Hex	2
2-971-09-02-001	M16 x 1.5	Hex	2

Tech Sheet 60388



Test 90° Elbow

0330	Thread	Type	DN
2-971-50-02-001	M16 x 2	Knurled	2
2-971-50-04-001	M16 x 2	Knurled	4
2-971-57-02-001	S12 x 1.5	Knurled	2
2-971-57-04-001	S12 x 1.5	Knurled	4

Tech Sheet 60388



BSPP Female

0330	Thread	DN
2-971-02-02-004	1/4"	2
2-971-02-04-004	1/4"	4
2-971-25-02-001	1/2"	2
2-971-25-04-001	1/2"	4

Tech Sheet 60388



BSPP 90° Elbow

0330	Thread	DN
2-971-58-02-001	1/4"	2
2-971-58-04-001	1/4"	4
2-971-54-02-001	1/2"	2
2-971-54-04-001	1/2"	4

Tech Sheet 60388



NPT Female

0330	Thread	DN
2-971-26-00-001	1/4"	2
2-971-26-04-001	1/4"	4
2-971-27-00-001	1/2"	2
2-971-27-04-001	1/2"	4

Tech Sheet 60388



Metric Female, DN2353

0330	Thread	Type	DN
2-971-19-02-001	M12 x 1.5	6L	2
2-971-19-04-001	M12 x 1.5	6L	4
2-971-20-02-001	M14 x 1.5	6S	2
2-971-20-04-001	M14 x 1.5	6S	4
2-971-21-02-001	M14 x 1.5	8L	2
2-971-21-04-001	M14 x 1.5	8L	4
2-971-22-02-001	M16 x 1.5	8S	2
2-971-22-04-001	M16 x 1.5	8S	4
2-971-23-02-001	M16 x 1.5	10L	2
2-971-23-04-001	M16 x 1.5	10L	4
2-971-24-02-001	M18 x 1.5	10S	2
2-971-24-04-001	M18 x 1.5	10S	4

Tech Sheet 60388



Metric 90° Elbow, DN2353

0330	Thread	Type	DN
2-971-44-02-001	M12 x 1.5	6L	2
2-971-44-04-001	M12 x 1.5	6L	4
2-971-45-02-001	M14 x 1.5	6S	2
2-971-45-04-001	M14 x 1.5	6S	4
2-971-46-02-001	M14 x 1.5	8L	2
2-971-46-04-001	M14 x 1.5	8L	4
2-971-48-02-001	M16 x 1.5	10L	2
2-971-48-04-001	M16 x 1.5	10L	4

Tech Sheet 60388



Metric Straight Standpipe

0330	OD mm	DN
2-971-13-00-001	6	2
2-971-13-04-001	6	4
2-971-15-00-001	8	2
2-971-15-04-001	8	4

Tech Sheet 60388

BSPP Male, DN3852

0330	Thread	DN
2-971-33-00-001	1/8"	2
2-971-33-04-001	1/8"	4

Tech Sheet 60388



JIC, SAE J541, Female

0330	Thread	DN
2-971-41-02-001	7/16"	2
2-971-41-04-001	7/16"	4

Tech Sheet 60388



Banjo

0330	OD mm	DN
2-971-75-00-001	8	2
2-971-75-04-001	8	4

Tech Sheet 60388



Anti-kink Spring



DN2

0330	To Suit
4-946-00-05-020	DN2 Hose

Ferrule



DN2 & DN4

0330	DN
4-999-03-01-160	2
6-999-03-01-010	4

Test Hose

Bespoke assemblies available on request.
Pin pricked



DN2 & DN4 Pin Pricked, Per Metre

0330	Max Pressure Bar	Type	DN
9-946-02-00-012	400	Pin Pricked	2
9-946-02-01-020	630	Pin Pricked	2
9-946-04-00-010	500	Pin Pricked	4

Tech Sheet 10487

DN2 Per Metre

0330	Max Pressure Bar	DN
9-946-02-00-020	630	2

Tech Sheet 10487



TEST POINT COUPLINGS

Spradow - Innovative Measuring Systems

The **Spradow** test coupling enables you to connect a pressure gauge or other measuring instruments in seconds - even if the system is still under pressure. The connection can be applied without any further tools. The non-return valve inside the test coupling opens only after being connected with the measuring instrument to allow a secure and clean pressure measurement.

Pressure is an important parameter for a successful preventing service and maintenance or, if necessary, trouble-shooting.

With **Spradow** test couplings you can reduce your service and maintenance costs considerably.

The **Spradow** test box is the perfect tool for hydraulic systems offering service and maintenance engineers an

easy mobile pressure test solution.

The complete **Spradow** test equipment is of course compatible with all other manufactures and fulfils all current important industrial standards.

Furthermore **Spradow** offers a comprehensive range of measuring systems for pneumatic braking systems.

Pressure Test Kits

Contents:

- 1 x Microbore Hose DN2-400 1620 Gauge Connection 1/4" BSPP 400 bar
- 1 x Pressure Gauge 0-40 bar 1/4" BSPP
- 1 x Pressure Gauge 0-400 bar 1/4" BSPP
- 1 x Gauge Connection 1620 1/4" BSPP
- 1 x Test Point 1620 1/4" BSPP Metal Cap
- 1 x Test Point 1620 M10 x 1
- 1 x Adaptor 1/4" Female x 3/8" Male
- 1 x Adaptor 1/4" Female x 1/2" Male
- 1 x Cleaning Cloth
- 1 x 1/4" Bonded Seal
- 1 x 3/8" Bonded Seal
- 1 x 1/2" Bonded Seal



400 bar, Pressure Test Kit

0330

HYD-KIT1

Tech Sheet 10292

Contents:

- 1 x SNA 1620 Adaptor 1/4" Male x Female
- 1 x SNA 1620 Adaptor 3/8" Male x Female
- 1 x SNA 1620 Adaptor 1/2" Male x Female
- 1 x Test Point 1620 1/4" BSPP Metal Cap
- 1 x Pressure Gauge 0-40 bar 1/4" BSPP
- 1 x Pressure Gauge 0-400 bar 1/4" BSPP
- 1 x Adaptor 1/4" Female x 1/2" Male
- 1 x Adaptor 1/4" Female x 3/8" Male
- 1 x Microbore Hose DN2-400 1620/Gauge Connection 1/4" BSPP 400 bar
- 1 x Cleaning Cloth
- 1 x 1/4" Bonded Seal
- 1 x 3/8" Bonded Seal
- 1 x 1/2" Bonded Seal



400 bar, Test Kit BSPP with In-line Tees

0330

HYD-KIT2

Tech Sheet 10292

Contents:

- 1 x SNA 1620 Adaptor 1/4" Male x Female
- 1 x SNA 1620 Adaptor 3/8" Male x Female
- 1 x SNA 1620 Adaptor 1/2" Male x Female
- 1 x Test Point 1620 1/4" BSPP Metal Cap
- 1 x Test Point 1620 1/8" BSPP Metal Cap
- 1 x Test Point 1620 M10 x 1
- 1 x Test Point 1620 M12 x 1.5 Metal Cap
- 1 x Adaptor 1/4" Female x 1/2" Male
- 1 x Adaptor 1/4" Female x 3/8" Male
- 1 x Pressure Gauge 0-400 bar 1/4" BSPP
- 1 x Pressure Gauge 0-40 bar 1/4" BSPP
- 1 x Microbore Hose DN2-400 1620/Gauge Connection 1/4" BSP 400 bar
- 1 x Cleaning Cloth
- 1 x 1/4" Bonded Seal
- 1 x 3/8" Bonded Seal
- 1 x 1/2" Bonded Seal



400 bar, Test Kit BSPP/Metric with In-line Tees

0330

HYD-KIT3

Tech Sheet 10292

Deluxe Pressure Test Kits



400 bar, Pressure Test Kit

0330

HYD-KIT4

Tech Sheet 10292

Same contents as HYD-KIT1
+ Deluxe Spradow Box

400 bar, Test Kit BSPP with In-line Tees

0330

HYD-KIT5

Tech Sheet 10292

Same contents as HYD-KIT2
+ Deluxe Spradow Box

400 bar, Test Kit BSPP/ Metric with In-line Tees

0330

HYD-KIT6

Tech Sheet 10292

Same contents as HYD-KIT3
+ Deluxe Spradow Box

You might also need
Glycerine Gauges
see pages 414-416



HYDRAULIC OIL COOLERS



AC Range Air Blast Oil Coolers

The LAC air oil cooler, with single-phase or three-phase AC motor, is optimised for use in the industrial sector. The maximum cooling capacity is 300kW at ETD +40°C. See Tech Sheet for full specification on this model.

- Maximum Working Temperature:** +120°C
- Maximum Static Working Pressure:** 21 bar
- Maximum Dynamic Working Pressure:** 14 bar



BSPP

0488	Thread	Voltage	KW/°C
LAC-1	1/2"	230/1/50	0.05
LAC-3	1"	230/3/50-275/3/60	0.36
LAC-6	1.1/4"	230/3/50	1.75
LAC-7	1.1/4"	230/3/50	2.1

Tech Sheet 60442

DC Range Air Blast Oil Coolers

The LDC air oil cooler with 24V DC motor is optimised for use in the mobile industry.

Together with a wide range of accessories, the LDC cooler is suitable for installation in most applications and environments.

The maximum cooling capacity is 30kW at +ETD 40°C. Also available with a 12V DC motor.

See Tech Sheet for full specification on this model.



BSPP

0488	Thread	Voltage	KW/°C
LDC-1	1"	24V	0.12
LDC-2	1"	24V	0.19
LDC-3	1"	24V	0.3
LDC-4	1"	24V	0.38
LDC-5	1"	24V	0.6
LDC-6	1.1/4"	24V	0.72

Tech Sheet 60443

Offline Air Blast Oil Cooler

The LOC cooling system with three-phase AC motor is optimised for use in the industrial sector. The system is supplied ready for installation. An integrated circulation pump makes it possible to cool and treat the oil in a separate circuit (offline cooling)

See Tech Sheet for full specification on this model.

- Maximum Working Temperature:** +100°C
- Maximum Static Working Pressure:** 21 bar
- Maximum Dynamic Working Pressure:** 14 bar



BSPP

0488	Thread	Voltage	KW/°C
LOC-1	1"	230/3/50-275/3/60	0.07
LOC-2	1"	230/3/50-275/3/60	0.2
LOC-3	1"	230/3/50-275/3/60	0.26
LOC-4	1"	230/3/50-275/3/60	0.45
LOC-5	1"	230/3/50-275/3/60	0.61
LOC-6	1.1/4"	230/3/50	1

Tech Sheet 60444

Hydraulic Motor In-line Coolers

The LHC air oil cooler with hydraulic motor is optimised for use in the mobile and industrial sectors.

The maximum cooling capacity is 300kW at ETD +40°C.

See Tech Sheet for full specification on this model

- Maximum Working Temperature:** +120°C
- Maximum Static Working Pressure:** 21 bar
- Maximum Dynamic Working Pressure:** 14 bar



BSPP

0488	Thread	Motor Option	KW/°C
LHC-1	1"	8.4cc	0.22
LHC-2	1"	14.4cc	0.38
LHC-3	1"	10.8cc	0.58
LHC-4	1"	10.8cc	0.76
LHC-5	1.1/4"	10.8cc	1.1
LHC-6	1.1/4"	8.4cc	1.3

Tech Sheet 60445

Compact Water/Oil Coolers

The Parker PWO is a compact and lightweight water/oil cooler with a high cooling capacity for its size.

Features:

- Light and compact
- Suitable for many applications
- Easy installation
- Cost-efficient and environmentally friendly

Material:

- Plates: EN 10028/7-1.4401 (AISI 316)
- Brazing: pure copper
- Connections: EN 10272-1.4401 (AISI 316)

For full specification on this item see Tech Sheet.

- Working Temperature:** -196°C to +225°C

- Maximum Working Pressure:** 31 bar at 155°C



BSPP

0488	Thread	Thread	KW/°C	Type
PWO-1	3/4"	1/2"	1.5-5	B5TH
PWO-2	3/4"	1/2"	4-7	B8TH
PWO-3	3/4"	1/2"	5-17	B8TH
PWO-4	3/4"	1/2"	7-27	B8TH
PWO-5	1"	3/4"	5-27	B10TH
PWO-6	1"	3/4"	10-50	B10TH
PWO-7	1"	3/4"	10-65	B10TH
PWO-8	1.1/4"	1"	10-60	B25TH
PWO-9	1.1/4"	1"	10-80	B25TH
PWO-10	1.1/4"	1"	20-95	B25TH
PWO-11	1.1/4"	1"	20-105	B25TH

Tech Sheet 60460