



techhose

QUALITY CONNECTIONS

Hydraulics

Pneumatics
& Vacuum

Industrial

Compressed Air
& Ring Main

Process &
Instrumentation

Hose Tails, Adaptors, Fittings & Manifolds

Quick Fit Fittings

Miniature fittings are for use with air connections in confined areas. The hose nipple and hose elbow styles accept nylon, soft nylon and polyurethane tubing.

Working Temperature:
-5°C to +60°C

Maximum Working Pressure:
10 bar

Male Studs



Male Thread, Metric

0425	ID mm	OD mm	Thread
MIPC4-M3	2.5	4	M3
MIPC3-M5	2	3	M5
MIPC4-M5	2.5	4	M5
MIPC5-M5	4	6	M5
MIPC4-M6	2.5	4	M6
MIPC6-M6	4	6	M6

Tech Sheet 60240

Male Elbows



Male Thread, Metric

0425	ID mm	OD mm	Thread
MIPL4-M3	2.5	4	M3
MIPL4-M5	2.5	4	M5
MIPL5-M6	4	6	M6

Tech Sheet 60240

Male Stud Tee Centre Leg



Male x Female, Metric

0425	Male Thread	Female Thread
MIUT-M5	M5	M5

Tech Sheet 60240

Female Tee



Female Thread, Metric

0425	Thread
MIFT-M5	M5

Tech Sheet 60240

Barb Male Hose Tails



Male Thread, Metric

0425	To Suit Hose ID mm	Thread
MIMHT2-M3	2	M3
MIMHT4-M3	4	M3
MIMHT3-M5	3	M5
MIMHT4-M5	4	M5
MIMHT6-M5	6	M5

Tech Sheet 60240

Barb Male Elbow Hose Tails



Male Thread, Metric

0425	To Suit Hose ID mm	Thread
MIEHT3-M3	3	M3
MIEHT4-M3	4	M3
MIEHT3-M5	3	M5
MIEHT4-M5	4	M5
MIEHT6-M5	6	M5

Tech Sheet 60240

Barb Male Stud Tees



Centre Leg Male, Metric

0425	To Suit Hose ID mm	Thread
MIBPB4-M5	4	M5

Tech Sheet 60240

Nipple



Male Thread, Metric

0425	Thread
MIMM-M5	M5

Tech Sheet 60240

Plugs



Male Thread, Metric

0425	Thread
MIPP-M5	M5

Tech Sheet 60240

Female Adaptor



Female Thread, Metric

0425	Thread
MIFF-M5	M5

Tech Sheet 60240

Male x Female Reducer



Male x Female, Metric

0425	Male Thread	Female Thread
MIMF-M5	M5	M5

Tech Sheet 60240

Extended Male x Female Adaptor



Male x Female, Metric

0425	Male Thread	Female Thread
MIRB18-M5	1/8"	M5

Tech Sheet 60240

BRASS QUICK-FIT FITTINGS



The working pressures and working temperatures depend on which type of tube is used; for this reason, the values must be determined in accordance with the tubes features. For the "swivel" fittings, the values are:

Working Temperature:
-18°C to +70°C

Maximum Working Pressure:
15 bar (220 psi)

Male Studs



BSPT

1030	ID mm	OD mm	Thread
C1-4/2.7-1/8	2.7	4	1/8"
C1-5/3-1/8	3	5	1/8"
C1-6/4-1/8	4	6	1/8"
C1-6/4-1/4	4	6	1/4"
C1-6/4-3/8	4	6	3/8"
C1-8/6-1/8	6	8	1/8"
C1-8/6-1/4	6	8	1/4"
C1-8/6-3/8	6	8	3/8"
C1-10/8-1/8	8	10	1/8"
C1-10/8-1/4	8	10	1/4"
C1-10/8-3/8	8	10	3/8"
C1-10/8-1/2	8	10	1/2"
C1-12/10-3/8	10	12	3/8"
C1-12/10-1/2	10	12	1/2"
C1-15/12.5-1/2	12.5	15	1/2"

Tech Sheet 10705



BSPP & Metric

1030	ID mm	OD mm	Thread
C12-4/2.7-5M	2.7	4	M5
C12-4/2.7-6M	2.7	4	M6
C12-4/2.7-1/8	2.7	4	1/8"
C12-5/3-5M	3	5	M5
C12-5/3-6M	3	5	M6
C12-5/3-1/8	3	5	1/8"
C12-6/4-5M	4	6	M5
C12-6/4-6M	4	6	M6
C12-6/4-1/8	4	6	1/8"
C12-6/4-1/4	4	6	1/4"
C12-6/4-3/8	4	6	3/8"
C12-6/4-1/2	4	6	1/2"
C12-8/6-1/8	6	8	1/8"
C12-8/6-1/4	6	8	1/4"
C12-8/6-3/8	6	8	3/8"
C12-10/8-1/8	8	10	1/8"
C12-10/8-1/4	8	10	1/4"
C12-10/8-3/8	8	10	3/8"
C12-10/8-1/2	8	10	1/2"
C12-12/10-3/8	10	12	3/8"
C12-12/10-1/2	10	12	1/2"

Tech Sheet 10705

Swivel Male Studs



BSPT

1030	ID mm	OD mm	Thread
C1X-6/4-1/4	4	6	1/4"
C1X-8/6-1/8	6	8	1/8"
C1X-8/6-1/4	6	8	1/4"
C1X-12/10-3/8	10	12	3/8"

Tech Sheet 10705



BSPP

1030	ID mm	OD mm	Thread
C1Y-6/4-1/8	4	6	1/8"
C1Y-6/4-1/4	4	6	1/4"
C1Y-8/6-1/8	6	8	1/8"
C1Y-8/6-1/4	6	8	1/4"
C1Y-10/6.5-1/4	6.5	10	1/4"
C1Y-10/8-1/4	8	10	1/4"
C1Y-12/10-3/8	10	12	3/8"

Tech Sheet 10705

Female Studs



BSPP

1030	ID mm	OD mm	Thread
C2-6/4-1/8	4	6	1/8"
C2-6/4-1/4	4	6	1/4"
C2-6/4-3/8	4	6	3/8"
C2-8/6-1/8	6	8	1/8"
C2-8/6-1/4	6	8	1/4"
C2-8/6-3/8	6	8	3/8"
C2-8/6-1/2	6	8	1/2"
C2-10/8-1/4	8	10	1/4"
C2-12/10-3/8	10	12	3/8"

Tech Sheet 10705

Straight Connectors



Equal Tube x Tube

1030	ID mm	OD mm
C3-4/2.7	2.7	4
C3-5/3	3	5
C3-6/4	4	6
C3-8/6	6	8
C3-10/8	8	10
C3-12/10	10	12
C3-15/12.5	12.5	15

Tech Sheet 10705

Unequal Tube x Tube

1030	ID A mm	OD A mm	ID B mm	OD B mm
C3-6/4-5/3	4	6	3	5
C3-8/6-6/4	6	8	4	6
C3-10/8-8/6	8	10	6	8

Tech Sheet 10705

Bulkhead Connectors



Equal Tube x Tube

1030	ID mm	OD mm
C4-4/2.7	2.7	4
C4-6/4	4	6
C4-8/6	6	8
C4-10/8	8	10
C4-12/10	10	12

Tech Sheet 10705

Unequal Tube x Tube

1030	ID A mm	OD A mm	ID B mm	OD B mm
C4-6/4-5/3	4	6	3	5
C4-8/6-6/4	6	8	4	6

Tech Sheet 10705

BRASS QUICK-FIT FITTINGS



The working pressures and working temperatures depend on which type of tube is used; for this reason, the values must be determined in accordance with the tubes features. For the "swivel" fittings, the values are:

Working Temperature:
-18°C to +70°C

Maximum Working Pressure:
15 bar (220 psi)

Male Studs, Spring Guard



BSPT

1030	ID mm	OD mm	Thread
E1-6/4-1/8	4	6	1/8"
E1-6/4-1/4	4	6	1/4"
E1-8/6-1/4	6	8	1/4"
E1-8/6-3/8	6	8	3/8"
E1-10/8-1/8	8	10	1/8"
E1-10/8-1/4	8	10	1/4"
E1-10/8-3/8	8	10	3/8"
E1-10/8-1/2	8	10	1/2"

Tech Sheet 10705



BSPP

1030	ID mm	OD mm	Thread
E1Z-6/4-1/8	4	6	1/8"
E1Z-6/4-1/4	4	6	1/4"
E1Z-8/6-1/4	6	8	1/4"
E1Z-10/8-3/8	8	10	3/8"
E1Z-12/10-3/8	10	12	3/8"

Tech Sheet 10705

Swivel Male Studs, Spring Guard



BSPT

1030	ID mm	OD mm	Thread
E1X-6/4-1/8	4	6	1/8"
E1X-6/4-1/4	4	6	1/4"
E1X-8/6-1/4	6	8	1/4"
E1X-10/6.5-1/4	6.5	10	1/4"
E1X-10/8-1/4	8	10	1/4"
E1X-12/8-3/8	8	12	3/8"

Tech Sheet 10705



BSPP

1030	ID mm	OD mm	Thread
E1Y-6/4-1/8	4	6	1/8"
E1Y-6/4-1/4	4	6	1/4"
E1Y-8/6-1/4	6	8	1/4"
E1Y-10/6.5-1/4	6.5	10	1/4"

Tech Sheet 10705

Female Studs, Spring Guard



BSPP

1030	ID mm	OD mm	Thread
C2X-6/4-1/4	4	6	1/4"
C2X-8/6-1/4	6	8	1/4"
C2X-8/6-3/8	6	8	3/8"
C2X-10/8-1/4	8	10	1/4"

Tech Sheet 10705

Locking Nuts

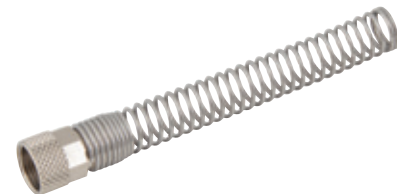


Metric

1030	ID mm	OD mm	Thread
C10-4/2.7-M6	2.7	4	M6 x 0.5
C10-5/3-M7	3	5	M7 x 0.75
C10-6/4-M8	4	6	M8 x 0.75
C10-6/4-M10	4	6	M10 x 1
C10-8/6-M12	6	8	M12 x 1
C10-10/8-M14	8	10	M14 x 1
C10-15/12.5-M20	12.5	15	M20 x 1

Tech Sheet 10705

Locking Nuts, Spring Guard



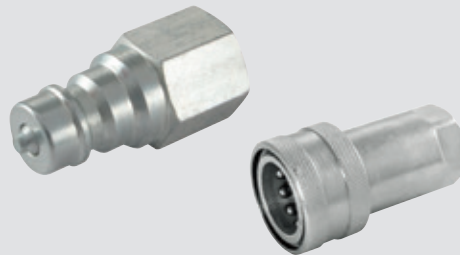
Metric

1030	ID mm	OD mm	Thread
C10X-6/4	4	6	M10 x 1
C10X-8/6	6	8	M12 x 1
C10X-10/8	8	10	M14 x 1
C10X-12/10	10	12	M16 x 1

Tech Sheet 10705



For Hydraulic QRC's
...see pages 290-294



BRASS QUICK-FIT FITTINGS



The working pressures and working temperatures depend on which type of tube is used; for this reason, the values must be determined in accordance with the tubes features. For the "swivel" fittings, the values are:

Working Temperature:
-18°C to +70°C

Maximum Working Pressure:
15 bar (220 psi)

Male Stud Elbows



BSPT

1030	ID mm	OD mm	Thread
C5-4/2.7-1/8	2.7	4	1/8"
C5-5/3-1/8	3	5	1/8"
C5-6/4-1/8	4	6	1/8"
C5-6/4-1/4	4	6	1/4"
C5-8/6-1/8	6	8	1/8"
C5-8/6-1/4	6	8	1/4"
C5-8/6-3/8	6	8	3/8"
C5-8/6-1/2	6	8	1/2"
C5-10/8-1/8	8	10	1/8"
C5-10/8-1/4	8	10	1/4"
C5-10/8-3/8	8	10	3/8"
C5-10/8-1/2	8	10	1/2"
C5-12/10-3/8	10	12	3/8"
C5-12/10-1/2	10	12	1/2"
C5-15/12.5-1/2	12.5	15	1/2"

Tech Sheet 10705

Swivel Male Stud Elbows



BSPT

1030	ID mm	OD mm	Thread
C5X-4/2.7-1/8	2.7	4	1/8"
C5X-6/4-1/8	4	6	1/8"
C5X-6/4-1/4	4	6	1/4"
C5X-8/6-1/8	6	8	1/8"
C5X-8/6-1/4	6	8	1/4"
C5X-10/8-1/4	8	10	1/4"

Tech Sheet 10705



BSPP

1030	ID mm	OD mm	Thread
C5Y-4/2.7-1/8	2.7	4	1/8"
C5Y-6/4-M5	4	6	M5
C5Y-6/4-1/8	4	6	1/8"
C5Y-6/4-1/4	4	6	1/4"
C5Y-8/6-1/8	6	8	1/8"
C5Y-8/6-1/4	6	8	1/4"
C5Y-10/8-1/4	8	10	1/4"

Tech Sheet 10705

Female Stud Elbows



BSPP

1030	ID mm	OD mm	Thread
C5F-5/3-1/8	3	5	1/8"
C5F-6/4-1/8	4	6	1/8"
C5F-6/4-1/4	4	6	1/4"
C5F-8/6-1/8	6	8	1/8"
C5F-8/6-1/4	6	8	1/4"
C5F-10/8-1/4	8	10	1/4"
C5F-10/8-3/8	8	10	3/8"

Tech Sheet 10705

Elbow Connectors



Equal Tube x Tube

1030	ID mm	OD mm
C6-4/2.7	2.7	4
C6-5/3	3	5
C6-6/4	4	6
C6-8/6	6	8
C6-10/8	8	10
C6-12/10	10	12

Tech Sheet 10705

Tee Connectors



Equal Tube x Tube

1030	ID mm	OD mm
C9-4/2.7	2.7	4
C9-5/3	3	5
C9-6/4	4	6
C9-8/6	6	8
C9-10/8	8	10
C9-12/10	10	12

Tech Sheet 10705

Unequal Tube x Tube

1030	ID A mm	OD A mm	ID B mm	OD B mm
C9-10/8-8/6	8	10	6	8

Tech Sheet 10705

Male Stud Tees



BSPT, Branch

1030	ID mm	OD mm	Thread
C7-4/2.7-1/8	2.7	4	1/8"
C7-6/4-1/8	4	6	1/8"
C7-6/4-1/4	4	6	1/4"
C7-8/6-1/8	6	8	1/8"
C7-8/6-1/4	6	8	1/4"
C7-10/8-1/4	8	10	1/4"
C7-12/10-3/8	10	12	3/8"
C7-15/12.5-1/2	12.5	15	1/2"

Tech Sheet 10705

BSPT, Run

1030	ID mm	OD mm	Thread
C8-6/4-1/8	4	6	1/8"
C8-6/4-1/4	4	6	1/4"
C8-8/6-1/8	6	8	1/8"
C8-8/6-1/4	6	8	1/4"
C8-10/8-1/4	8	10	1/4"

Tech Sheet 10705

Male Stud Swivel Tees



BSPT, Branch

1030	ID mm	OD mm	Thread
C7X-6/4-1/8	4	6	1/8"
C7X-6/4-1/4	4	6	1/4"
C7X-8/6-1/8	6	8	1/8"
C7X-8/6-1/4	6	8	1/4"
C7X-10/8-1/4	8	10	1/4"

Tech Sheet 10705

BSPP, Branch

1030	ID mm	OD mm	Thread
C7Y-6/4-1/8	4	6	1/8"
C7Y-8/6-1/8	6	8	1/8"
C7Y-8/6-1/4	6	8	1/4"

Tech Sheet 10705

Cross Connectors



Tube x Tube

1030	ID mm	OD mm
C11-6/4	4	6
C11-8/6	6	8
C11-12/10	10	12
C11-15/12.5	12.5	15

Tech Sheet 10705

Female Single Banjo Body



Female Thread, BSPP

1030	Thread
6090-1/8	1/8"
6090-1/4	1/4"

Tech Sheet 10705

Single Banjo Body - Quick-Fit



BSPP & Metric

1030	ID mm	OD mm	Thread
D5-4/2.7-5M	2.7	4	M5
D5-5/3-5M	3	5	M5
D5-6/4-5M	4	6	M5
D5-6/4-1/8	4	6	1/8"
D5-6/4-1/4	4	6	1/4"
D5-8/6-1/8	6	8	1/8"
D5-8/6-1/4	6	8	1/4"
D5-8/6-3/8	6	8	3/8"
D5-10/8-1/4	8	10	1/4"
D5-10/8-3/8	8	10	3/8"
D5-10/8-1/2	8	10	1/2"
D5-12/10-3/8	10	12	3/8"

Tech Sheet 10705

Double Banjo Body - Quick-Fit



BSPP & Metric

1030	ID mm	OD mm	Thread
D6-4/2.7-1/8	2.7	4	1/8"
D6-8/6-1/8	6	8	1/8"
D6-8/6-1/4	6	8	1/4"
D6-8/6-1/2	6	8	1/2"
D6-10/8-1/8	8	10	1/8"
D6-10/8-1/2	8	10	1/2"

Tech Sheet 10705

Washers



Nylon, Notched

1030	Thread
D11X-5M	M5
D11X-1/8	1/8"
D11X-1/4	1/4"
D11X-3/8	3/8"
D11X-1/2	1/2"
D11X-3/4	3/4"

Tech Sheet 10705



Aluminium

1030	Thread
D11-5M	M5
D11-1/8	1/8"
D11-1/4	1/4"
D11-3/8	3/8"
D11-1/2	1/2"
D11-3/4	3/4"
D11-1	1"
D11-11/2	1.1/2"
D11-2	2"

Tech Sheet 10705

Short Banjo Bolts



Single Stem, BSPP & Metric

1030	Thread
D7-5M-L	M5
D7-6M	M6
D7-1/8	1/8"
D7-1/4	1/4"
D7-3/8	3/8"
D7-1/2	1/2"
D7-M12X1.5	M12 x 1.5

Tech Sheet 10705



Double Stem, BSPP

1030	Thread
D8-1/8	1/8"
D8-1/4	1/4"
D8-3/8	3/8"
D8-1/2	1/2"

Tech Sheet 10705



Triple Stem, BSPP

1030	Thread
D13-1/4	1/4"
D13-1/2	1/2"

Tech Sheet 10705



Washer 10mm

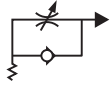
1030	Thread
D11Z-1/4	1/4"

Tech Sheet 10705

FLOW REGULATORS



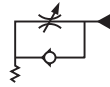
Screwdriver Quick-Fit Flow Regulators



For Cylinders, Metric & BSPP

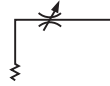
1000	ID mm	OD mm	Thread
8950-4/2.7-1/8	2.7	4	1/8"
8950-6/4-M5	4	6	M5
8950-6/4-1/4	4	6	1/4"
8950-8/6-1/8	6	8	1/8"
8950-8/6-1/4	6	8	1/4"

For Valves, BSPP



1000	ID mm	OD mm	Thread
8960-6/4-1/8	6/4	6	1/8"
8960-8/6-1/8	8/6	8	1/8"

For Bi-directional, BSPP



1000	ID mm	OD mm	Thread
8970-6/4-M5	4	6	M5
8970-6/4-1/4	4	6	1/4"
8970-8/6-1/4	6	8	1/4"

Manual Quick-Fit Female BSPP



For Cylinders, BSPP

1000	Thread
8957-1/8	1/8"
8957-1/4	1/4"

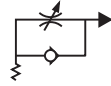
For Valves, BSPP

1000	Thread
8967-1/8	1/8"
8967-1/4	1/4"

For Bi-directional, BSPP

1000	Thread
8977-1/8	1/8"
8977-1/4	1/4"

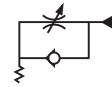
Manual Quick-Fit Flow Regulators



For Cylinders, BSPP

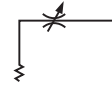
1000	ID mm	OD mm	Thread
8955-6/4-1/8	4	6	1/8"
8955-6/4-1/4	4	6	1/4"
8955-8/6-1/8	6	8	1/8"
8955-10/8-1/4	8	10	1/4"

For Valves, Metric & BSPP



1000	ID mm	OD mm	Thread
8965-4/2.7-M5	2.7	4	M5
8965-6/4-M5	4	6	M5
8965-8/6-1/8	6	8	1/8"
8965-10/8-1/4	8	10	1/4"

For Bi-directional, BSPP



1000	ID mm	OD mm	Thread
8975-4/2.7-1/8	2.7	4	1/8"
8975-6/4-1/8	4	6	1/8"

Screwdriver Flow Regulator Valves



For Cylinders, Male Thread, BSPP

1000	Thread
8900-1/4	1/4"

For Valves, Male Thread, Metric

1000	Thread
8910-M5	M5

For Bi-directional Male Thread, BSPP

1000	Thread
8920-1/8	1/8"
8920-1/4	1/4"

Screwdriver Quick-Fit Female BSPP



For Cylinders, BSPP

1000	Thread
8952-1/8	1/8"
8952-1/4	1/4"

For Valves, BSPP

1000	Thread
8962-1/8	1/8"

For Bi-directional, BSPP

1000	Thread
8972-1/8	1/8"
8972-1/4	1/4"

Manual Flow Regulator Valves



For Valves, Male Thread, Metric

1000	Thread
8915-M5	M5

For Bi-directional Male Thread, Metric & BSPP

1000	Thread
8925-M5	M5
8925-1/4	1/4"

EB80 VALVES

Driven by Customers Designed by Metal Work



Why cut costs on components, putting quality and performance in jeopardy?
Make your systems ultra efficient with Metal Work Pneumatics.



SYNTESI MONITORED DUMP VALVE

FINGER-TIGHT FITTINGS



Body:
OT 58 brass

Temperature Range:
-45°C to +80°C

Maximum Pressure:
18 bar

Male Stud



BSP Tapered x Tube

9152	Thread BSPT	Tube mm	
		OD	ID
2301001	R1/8"	6	4
2301002	R1/4"	6	4
2301003	R1/8"	8	6
2301004	R1/4"	8	6
2301005	R3/8"	8	6
2301006	R1/4"	10	8
2301007	R3/8"	10	8
2301008	R1/2"	10	8
2301009	R3/8"	12	10
2301010	R1/2"	12	10

Male Stud



BSP Tapered x Tube

9152	Thread BSPP	Tube mm	
		OD	ID
2351001	M5	4	2
2356001	M5	5	3
2351002	M5	6	4
2351003	G1/8"	6	4
2351004	G1/4"	6	4
2351005	G1/8"	8	6
2351006	G1/4"	8	6
2351007	G3/8"	8	6
2351008	G1/4"	10	8
2351009	G3/8"	10	8
2351010	G1/2"	10	8
2351011	G3/8"	12	10
2351012	G1/2"	12	10

Female Stud



BSP Parallel x Tube

9152	Thread BSPP	Tube mm	
		OD	ID
2302002	G1/4"	6	4
2302004	G1/4"	8	6
2302005	G3/8"	8	6
2302006	G1/4"	10	8
2302007	G3/8"	10	8
2302008	G1/2"	10	8

Equal Elbow



Tube x Tube

9152	Tube mm	
	OD	ID
2306001	6	4
2306003	10	8
2306004	12	10

Male Stud Elbow



BSP Tapered x Tube

9152	Thread BSPT	Tube mm	
		OD	ID
2305001	G1/8"	6	4
2305002	G1/4"	6	4
2305003	G1/8"	8	6
2305004	G1/4"	8	6
2305005	G3/8"	8	6
2305006	G1/4"	10	8
2305007	G3/8"	10	8
2305008	G1/2"	10	8
2305009	G3/8"	12	10
2305010	G1/2"	12	10

Straight Connector



Tube x Tube

9152	Tube mm	
	OD	ID
2303001	6	4
2303002	8	6
2303003	10	8
2303004	12	10

Equal Tee



Tube x Tube

9152	Tube mm	
	OD	ID
2309001	6	4
2309002	8	6
2309004	12	10

Female Stud Elbow



BSP Parallel x Tube

9152	Thread BSPP	Tube mm	
		OD	ID
2352002	G1/4"	8	6

Bulkhead Connector



Tube x Tube

9152	Tube mm	
	OD	ID
2304001	6	4
2304002	8	6

Male Stud Branch Tee



BSP Parallel x Tube

9152	Thread BSPP	Tube mm	
		OD	ID
2307001	G1/8"	6	4
2307002	G1/4"	6	4
2307003	G1/8"	8	6
2307004	G1/4"	8	6
2307005	G3/8"	8	6
2307008	G1/2"	10	8
2307009	G3/8"	12	10
2307010	G1/2"	12	10

Male Stud Run Tee



BSP Parallel x Tube

9152	Thread BSPP	Tube mm	
		OD	ID
2308012	G1/8"	5	3
2308001	G1/8"	6	4
2308002	G1/4"	6	4
2308004	G1/4"	8	6
2308005	G3/8"	8	6
2308006	G1/4"	10	8
2308007	G3/8"	10	8
2308008	G1/2"	10	8
2308009	G3/8"	12	10
2308010	G1/2"	12	10

Swivel Tube Fitting with Spring Guard



BSP Parallel x Tube

9152	Thread BSPP	Tube mm	
		OD	ID
2501010	G1/4"	6	4
2501011	G1/4"	8	6
2501012	G3/8"	10	8

Equal Cross



Tube x Tube

9152	Tube mm	
	OD	ID
2311001	6	4
2311002	8	6
2311003	10	8

POLYPROPYLENE QUICK-FIT FITTINGS



3 Way Valve

EPDM O-rings

Working Temperature:
-5°C to +60°C

Maximum Working Pressure:
10 bar



1/4" BSPT Inlet

0497	Outlet
3WAY-18	1/8" BSPT
3WAY-14	1/4" BSPT
3WAY-8MM	8mm Barb

Tech Sheet 10488

Female Connector



BSPT

0497	ID mm	OD mm	Thread
PP2-6-18	4	6	1/8"
PP2-6-14	4	6	1/4"
PP2-8-14	6	8	1/4"

Male Run Tee



BSPT

0497	ID mm	OD mm	Thread
PP8-6-14	4	6	1/4"
PP8-12-14	10	12	1/4"
PP8-12-12	10	12	1/2"

Male Branch Tee



BSPT

0497	ID mm	OD mm	Thread
PP7-6-14	4	6	1/4"
PP7-8-14	6	8	1/4"
PP7-12-14	10	12	1/4"
PP7-12-38	10	12	3/8"
PP7-12-12	10	12	1/2"

Equal Tee



Tube x Tube

0497	ID mm	OD mm
PP9-6	4	6
PP9-8	6	8
PP9-12	10	12

Reducing Connector



Tube x Tube

0497	ID A mm	OD A mm	ID B mm	OD B mm
PP4-8-6	6	8	4	6

Equal Connector



Tube x Tube

0497	ID mm	OD mm
PP3-6	4	6
PP3-8	6	8
PP3-12	10	12

Equal Elbow



Tube x Tube

0497	ID mm	OD mm
PP5-6	4	6
PP5-8	6	8
PP5-12	10	12

Male Elbow



BSPT

0497	ID mm	OD mm	Thread
PP6-6-18	4	6	1/8"
PP6-6-14	4	6	1/4"
PP6-8-18	6	8	1/8"
PP6-8-14	6	8	1/4"
PP6-8-38	6	8	3/8"
PP6-12-14	10	12	1/4"
PP6-12-38	10	12	3/8"
PP6-12-12	10	12	1/2"

1 Body Type Banjo Bolt



Type PP13, BSPP

0497	Thread
PP13-14	1/4"

Double Banjo Body



BSPB

0497	ID mm	OD mm
PP10-8-8-18	6	8

Male Connector



BSPT

0497	ID mm	OD mm	Thread
PP1-6-18	4	6	1/8"
PP1-6-14	4	6	1/4"
PP1-8-18	6	8	1/8"
PP1-8-14	6	8	1/4"
PP1-12-14	10	12	1/4"
PP1-12-38	10	12	3/8"
PP1-12-12	10	12	1/2"

PVDF QUICK-FIT FITTINGS



Fittings made of PVDF function better than nylon when exposed to a wide range of temperatures and high corrosive chemicals.

This enables them to be used in industries such as chemical processing due to their excellent chemical resistance properties.

Working Temperature:
-20°C to +120°C

Maximum Working Pressure:
14 bar at 20°C

Male Connector



BSPT

0472	ID mm	OD mm	Thread
PPV1-6-18	4	6	1/8"
PPV1-8-14	6	8	1/4"
PPV1-12-38	10	12	3/8"

Tech Sheet 60237

Equal Connector



Tube x Tube

0472	ID mm	OD mm
PPV3-6	4	6
PPV3-8	6	8
PPV3-12	10	12

Tech Sheet 60237

Equal Tee



Tube x Tube

0472	ID mm	OD mm
PPV9-6	4	6
PPV9-8	6	8
PPV9-12	10	12

Tech Sheet 60237

Female Connector



BSPT

0472	ID mm	OD mm	Thread
PPV2-6-18	4	6	1/8"
PPV2-6-14	4	6	1/4"
PPV2-8-14	6	8	1/4"

Tech Sheet 60237

Equal Elbow



Tube x Tube

0472	ID mm	OD mm
PPV5-6	4	6
PPV5-8	6	8
PPV5-12	10	12

Tech Sheet 60237

Male Elbow



BSPT

0472	ID mm	OD mm	Thread
PPV6-6-18	4	6	1/8"
PPV6-8-14	6	8	1/4"
PPV6-12-38	10	12	3/8"

Tech Sheet 60237



For Nylon Hose Tails
...see pages 1150-1151

