



techhose

QUALITY CONNECTIONS

Hydraulics

Pneumatics
& Vacuum

Industrial

Compressed Air
& Ring Main

Process &
Instrumentation

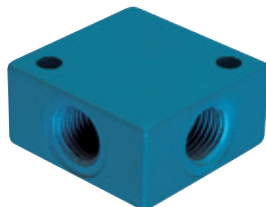
Hose Tails, Adaptors, Fittings & Manifolds

Manifolds

DISTRIBUTION MANIFOLDS



Equal Cross Manifolds



Female, BSPP

0315	Thread
KMDS-1/8	1/8"
KMDS-1/4	1/4"
KMDS-3/8	3/8"
KMDS-1/2	1/2"

Tech Sheet 3108

ALUMINIUM MANIFOLDS



Single Distribution Manifold

Working Temperature:
0°C to +80°C

Maximum Working Pressure:
12 bar



1/4" BSPT Inlet x 1/4" BSPT Outlet

1000	No. of Inlets	No. of Outlets
MD-2	2	2
MD-3	2	3
MD-4	2	4
MD-5	2	5

Single Distribution Manifold



1/4" BSPP Inlet x 1/8" BSPP Outlet

1000	No. of Inlets	No. of Outlets
DM13/3	2	3
DM13/4	2	4
DM13/5	2	5
DM13/6	2	6

Round Manifolds

Working Temperature:
0°C to +80°C

Maximum Working Pressure:
10 bar



1/4" BSPT Inlet x 1/4" BSPT Outlet

1000	No. of Inlets	No. of Outlets
M2-14	1	2

Round Manifolds

Working Temperature:
0°C to +80°C

Maximum Working Pressure:
10 bar



1/4" BSPT Inlet x 1/4" BSPT Outlet

1000	No. of Inlets	No. of Outlets
M3-14	1	3

Single Distribution Manifolds



1/8" BSPP Inlet x M5 Outlet

0012	No. of Inlets	No. of Outlets
MAN-155.02	2	2
MAN-155.06	2	6

Tech Sheet 12

1/4" BSPP Inlet x 1/8" BSPP Outlet

0012	No. of Inlets	No. of Outlets
MAN-151.02	2	2
MAN-151.03	2	3
MAN-151.04	2	4
MAN-151.05	2	5
MAN-151.06	2	6

Tech Sheet 12

3/8" BSPP Inlet x 1/8" BSPP Outlet

0012	No. of Inlets	No. of Outlets
MAN-153.03	2	3
MAN-153.04	2	4
MAN-153.05	2	5
MAN-153.06	2	6

Tech Sheet 12

3/8" BSPP Inlet x 1/4" BSPP Outlet

0012	No. of Inlets	No. of Outlets
MAN-152.02	2	2
MAN-152.03	2	3
MAN-152.04	2	4
MAN-152.05	2	5
MAN-152.06	2	6

Tech Sheet 12

1/2" BSPP Inlet x 1/4" BSPP Outlet

0012	No. of Inlets	No. of Outlets
MAN-154.02	2	2
MAN-154.03	2	3
MAN-154.04	2	4
MAN-154.05	2	5
MAN-154.06	2	6

Tech Sheet 12

1/2" BSPP Inlet x 3/8" BSPP Outlet

0012	No. of Inlets	No. of Outlets
MAN-156.02	2	2
MAN-156.03	2	3
MAN-156.04	2	4
MAN-156.05	2	5
MAN-156.06	2	6

Tech Sheet 12

1/2" BSPP Inlet x 1/2" BSPP Outlet

0012	No. of Inlets	No. of Outlets
MAN-157.02	2	2
MAN-157.03	2	3
MAN-157.04	2	4
MAN-157.05	2	5

Tech Sheet 12

Double Distribution Manifolds



1/8" BSPP Inlet x M5 Outlet

0012	No. of Inlets	No. of Outlets
MAN-155.22	2	5mm x 2 + 2

Tech Sheet 12

1/4" BSPP Inlet x 1/8" BSPP Outlet

0012	No. of Inlets	No. of Outlets
MAN-151.22	2	2 + 2
MAN-151.33	2	3 + 3
MAN-151.44	2	4 + 4
MAN-151.55	2	5 + 5

Tech Sheet 12

3/8" BSPP Inlet x 1/8" BSPP Outlet

0012	No. of Inlets	No. of Outlets
MAN-153.33	2	3 + 3
MAN-153.44	2	4 + 4
MAN-153.55	2	5 + 5

Tech Sheet 12

3/8" BSPP Inlet x 1/4" BSPP Outlet

0012	No. of Inlets	No. of Outlets
MAN-152.22	2	2 + 2
MAN-152.33	2	3 + 3
MAN-152.44	2	4 + 4
MAN-152.55	2	5 + 5

Tech Sheet 12

1/2" BSPP Inlet x 1/4" BSPP Outlet

0012	No. of Inlets	No. of Outlets
MAN-154.22	2	2 + 2
MAN-154.33	2	3 + 3
MAN-154.44	2	4 + 4
MAN-154.55	2	5 + 5

Tech Sheet 12

1/2" BSPP Inlet x 3/8" BSPP Outlet

0012	No. of Inlets	No. of Outlets
MAN-156.44	2	4 + 4
MAN-156.55	2	5 + 5

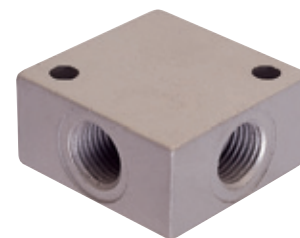
Tech Sheet 12

1/2" BSPP Inlet x 1/2" BSPP Outlet

0012	No. of Inlets	No. of Outlets
MAN-157.22	2	2 + 2
MAN-157.33	2	3 + 3
MAN-157.44	2	4 + 4
MAN-157.55	2	5 + 5

Tech Sheet 12

Equal Cross Manifolds



Female, BSPP

0012	Thread
MAN-145.8	1/8"
MAN-145.4	1/4"
MAN-145.3	3/8"
MAN-145.2	1/2"

Tech Sheet 12

A wide range of aluminium manifolds, ideal for multi-feeds and supplies in systems and for grouping valves.

BRASS MANIFOLDS



Single Sided Manifold Block, Brass



1/8" BSPP Inlet x 1/8" BSPP Outlet

1420	No. of Outlets
MB02/04	4
MB02/06	6
MB02/08	8

1/4" BSPP Inlet x 1/4" BSPP Outlet

1420	No. of Outlets
MB04/02	2
MB04/04	4
MB04/06	6
MB04/08	8
MB04/10	10

3/8" BSPP Inlet x 3/8" BSPP Outlet

1420	No. of Outlets
MB06/04	4
MB06/06	6
MB06/08	8

1/2" BSPP Inlet x 1/2" BSPP Outlet

1420	No. of Outlets
MB08/04	4
MB08/06	6
MB08/08	8

3/4" BSPP Inlet x 3/4" BSPP Outlet

1420	No. of Outlets
MB12/04	4
MB12/06	6

Unequal Manifold Block, Brass



3/4" BSPP Inlet x 1/2" BSPP Outlet

1420	No. of Outlets
MB12/08/04	4

3/8" BSPP Inlet x 1/4" BSPP Outlet

1420	No. of Outlets
MB06/04/04	4
MB06/04/06	6
MB06/04/08	8




For **Hydraulic Ball Valves**
...see pages **238-240**

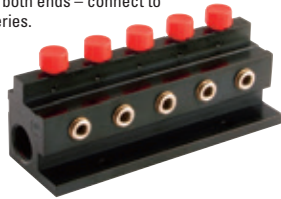
MINIFOLDS

Aluminium 5 & 10 Way Manifolds

Replace complex assemblies of valves and fittings with anodised aluminium Minifolds
 Each Minifold comprises of a number of valved outlets on a common header.
 Minifold blocks have tapped inlet connections at both ends – connect to one and plug the other or connect Minifolds in series.

 **Working Temperature:**
 -20°C to +90°C

 **Maximum Working Pressure:**
 Vacuum to 10 bar



1/2" BSPP Inlet x 1/4" BSPP Outlet

0202	No. of Inlets	No. of Outlets
971-05-251	2	5
971-10-251	2	10
Tech Sheet 10556		

1/2" BSPP Inlet x 6mm Outlet

0202	No. of Inlets	No. of Outlets
971-05-256	2	5
971-10-256	2	10
Tech Sheet 10556		

3/4" BSPP Inlet x 3/8" BSPP Outlet

0202	No. of Inlets	No. of Outlets
975-05-272	2	5
975-10-272	2	10
Tech Sheet 10556		

Specifications

Series 971: Nominal Bore 18mm
 1/2" BSP Female or
 1/2" NPT Female inlets
 1/4" BSP Female or
 1/4" NPT Female or 6mm
 push-in outlets

Series 975: Nominal Bore 25mm
 3/4" BSP Female or
 3/4" NPT Female inlets
 3/8" BSP Female or
 3/8" NPT Female outlets

Materials:

Blocks: Anodised aluminium
Valve Spindles: Thermoplastic
 (red for BSP, grey for NPT)
Seals: Nitrile
Push-in Fittings: Plated brass




1/2" NPT Inlet x 1/4" NPT Outlet

0202	No. of Inlets	No. of Outlets
971-10-263	2	10
Tech Sheet 10556		

1/2" NPT Inlet x 6mm Outlet

0202	No. of Inlets	No. of Outlets
971-10-266	2	10
Tech Sheet 10556		

Stainless Steel 4, 6 & 10 Way Manifolds

 **Working Temperature:**
 60 bar @ 40°C
 40 bar @ 100°C
 25 bar @ 150°C

Replace complex assemblies of valves and fitting
 with stainless steel manifolds.
 Each Minifold comprises of a number of
 ball valves on a common header.

Minifold blocks have tapped inlet connections at both ends
 – connect to one and plug the other or connect Minifold
 in series.

Specifications

Series 910: Nominal Bore 18mm
 1/2" or 3/4" BSP Taper or NPT inlets
 1/4" or 1/2" BSP Taper or NPT outlet
 Supplied with two mounting brackets

Materials:

Blocks: 316 Stainless steel
Valve Body/Ball: 316 Stainless steel
Valve Handle: 304 Stainless steel
 (Red for BSP, black for NPT)
Valve Seals: PTFE

stainless steel

1/2" BSPT Inlet x 1/4" BSPT Outlet



0202	No. of Inlets	No. of Outlets
910.04.SDP011414	2	4
910.06.SDP011414	2	6
910.10.SDP011414	2	10

3/4" BSPT Inlet x 1/2" BSPT Outlet



0202	No. of Inlets	No. of Outlets
910.04.SDP142828	2	4
910.06.SDP142828	2	6

3/4" NPT Inlet x 1/4" NPT Outlet



0202	No. of Inlets	No. of Outlets
910.04.SDP032727	2	4

3/4" BSPT Inlet x 1/4" BSPT Outlet



0202	No. of Inlets	No. of Outlets
910.04.SDP012828	2	4
910.10.SDP012828	2	10

1/2" NPT Inlet x 1/4" NPT Outlet



0202	No. of Inlets	No. of Outlets
910.04.SDP030606	2	4
910.06.SDP030606	2	6

3/4" NPT Inlet x 1/2" NPT Outlet



0202	No. of Inlets	No. of Outlets
910.04.SDP062727	2	4
910.06.SDP062727	2	6

Rotating Joints

- Viton seals as standard
- Suitable for fluids and air
- Units suitable for vacuum and non standard pressures available on request

Working Temperature:
-10°C to +85°C

Maximum Working Pressure:
12 bar



1 Inlet x 6 Outlets

0064	No. of Inlets	No. of Outlets	Rotation	RPM
300/V	1 x 3/8"	6 x 1/8"	Right/Left	300

Tech Sheet 29

Working Temperature:
-10°C to +85°C

Maximum Working Pressure:
12 bar



1 Inlet x 3 Outlets

0064	No. of Inlets	No. of Outlets	Rotation	RPM
302/V	1 x 3/8"	3 x 1/4"	Right/Left	300

Tech Sheet 29

Working Temperature:
-10°C to +85°C

Maximum Working Pressure:
12 bar



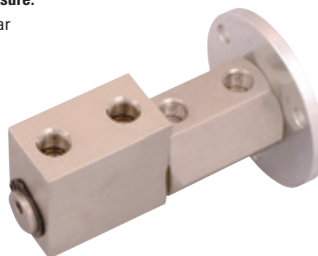
1 Inlet x 1 Outlet

0064	No. of Inlets	No. of Outlets	Rotation	RPM
303/V	1 x 1/8"	1 x 1/8"	Right/Left	550
304/V	1 x 1/4"	1 x 1/4"	Right/Left	550
305/V	1 x 3/8"	1 x 3/8"	Right/Left	300
307/V	1 x 3/4"	1 x 3/4"	Right/Left	160

Tech Sheet 30

Working Temperature:
-10°C to +85°C

Maximum Working Pressure:
12 bar



2 Independent Inlets & Outlets

0064	No. of Inlets	No. of Outlets	Rotation	RPM
312/V	2 x 1/4"	2 x 1/4"	Right/Left	200

Tech Sheet 31

Swivel Joints - Aluminium

Working Temperature:
0°C to +70°C

Maximum Working Pressure:
12 bar



Male x Female Thread, without Regulator

1000	Thread
RJ-14	1/4"



For Globe Valves
... see page 975

