



# techhose

QUALITY CONNECTIONS

Hydraulics

Pneumatics  
& Vacuum

Industrial

Compressed Air  
& Ring Main

Process &  
Instrumentation

---

## Hose Tails, Adaptors, Fittings & Manifolds

---

Adaptors

## Male Adaptors - Equal



### Male Thread, BSPT

0447	Thread
UP1-18	1/8"
UP1-14	1/4"
UP1-38	3/8"
UP1-12	1/2"
UP1-34	3/4"
UP1-1	1"
UP1-114	1.1/4"
UP1-112	1.1/2"
UP1-2	2"

### Male Thread, NPT x BSPT

0447	Thread
660-1010	1/8"
660-1313	1/4"
660-1717	3/8"
660-2121	1/2"
660-2626	3/4"
660-3333	1"

### Male Thread, Metric

0447	Thread
2018-MM05	M5 x 0.8
2018-MM08	M8 x 1.0
2018-MM10	M10 x 1.0
2018-MM12	M12 x 1.5
2018-MM14	M14 x 1.5
2018-MM16	M16 x 1.5
2018-MM18	M18 x 1.5
2018-MM20	M20 x 1.5
2018-MM22	M22 x 1.5



### Flat Faced, Male Thread, BSPP

0447	Thread
PM18-18FF	1/8"
PM14-14FF	1/4"
PM38-38FF	3/8"
PM12-12FF	1/2"
PM34-34FF	3/4"
PM1-1FF	1"

## Male Adaptors - Unequal



### Male Thread, BSPT x BSPT

0447	Thread	Thread
UP2-18-14	1/8"	1/4"
UP2-18-38	1/8"	3/8"
UP2-18-12	1/8"	1/2"
UP2-14-38	1/4"	3/8"
UP2-14-12	1/4"	1/2"
UP2-38-12	3/8"	1/2"
UP2-14-34	1/4"	3/4"
UP2-38-34	3/8"	3/4"
UP2-12-34	1/2"	3/4"
UP2-12-1	1/2"	1"
UP2-34-1	3/4"	1"



### Male Thread, BSPP x BSPT

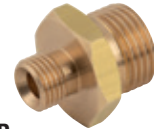
0447	BSPP Thread	BSPT Thread
UP2-14-18P	1/4"	1/8"
UP2-18-14P	1/8"	1/4"
UP2-38-14P	3/8"	1/4"
UP2-12-14P	1/2"	1/4"
UP2-14-38P	1/4"	3/8"
UP2-12-38P	1/2"	3/8"
UP2-14-12P	1/4"	1/2"
UP2-38-12P	3/8"	1/2"
UP2-34-12P	3/4"	1/2"
UP2-12-34P	1/2"	3/4"
UP2-34-1P	3/4"	1"



### Male Thread, NPT x NPT

0447	Thread	Thread
2018-2473	1/8"	1/8"
2018-2481	1/8"	1/4"
2018-2499	1/4"	1/4"
2018-2515	3/8"	1/4"
2018-2523	3/8"	3/8"
2018-2531	1/4"	1/2"
2018-2549	1/2"	3/8"
2018-2556	1/2"	1/2"
2018-2564	1/4"	3/4"
2018-2572	3/8"	3/4"
2018-2580	1/2"	3/4"
2018-2598	3/4"	3/4"
2018-2606	1/2"	1"
2018-2614	3/4"	1"
2018-2622	1"	1"

## 60° Male Adaptors



### Coned, Male Thread, BSPP

0447	Thread	Thread
PM18-18	1/8"	1/8"
PM14-18	1/4"	1/8"
PM14-14	1/4"	1/4"
PM38-18	3/8"	1/8"
PM38-14	3/8"	1/4"
PM12-38	1/2"	3/8"
PM12-12	1/2"	1/2"
PM34-38	3/4"	3/8"
PM34-12	3/4"	1/2"
PM34-34	3/4"	3/4"
PM1-38	1"	3/8"
PM1-12	1"	1/2"
PM1-34	1"	3/4"
PM114-1	1.1/4"	1"
PM112-114	1.1/2"	1.1/4"



### Male Thread, BSPP x BSPT

0447	Thread
PT18	1/8"
PT14	1/4"
PT38	3/8"
PT12	1/2"
PT1	1"
PT114	1.1/4"
PT112	1.1/2"
PT2	2"

## BRASS ADAPTORS



## Reducing Bush

Male Thread,  
BSPT x Female Thread, BSPP

0447	Female Thread	Male Thread
UP3-18-14	1/8"	1/4"
UP3-18-38	1/8"	3/8"
UP3-18-12	1/8"	1/2"
UP3-14-38	1/4"	3/8"
UP3-14-12	1/4"	1/2"
UP3-38-12	3/8"	1/2"
UP3-14-34	3/4"	1/4"
UP3-38-34	3/4"	3/8"
UP3-12-34	3/4"	1/2"
UP3-14-1	1/4"	1"
UP3-38-1	1"	3/8"
UP3-12-1	1"	1/2"
UP3-34-1	1"	3/4"
UP3-34-114	1.1/4"	3/4"
UP3-1-114	1.1/4"	1"
UP3-114-112	1.1/2"	1.1/4"
UP3-114-2	2"	1.1/4"
UP3-112-2	2"	1.1/2"

Male Thread,  
BSPT x Female Thread, Metric

0447	Male Thread	Female Thread
UP3-M5-18	1/8"	M5 x 0.8



## Male Thread, NPT x Female Thread, NPS

0447	Male Thread	Female Thread
UP3-18-14N	1/4"	1/8"
UP3-18-38N	3/8"	1/8"
UP3-14-38N	3/8"	1/4"
UP3-18-12N	1/2"	1/8"
UP3-14-12N	1/2"	1/4"
UP3-38-12N	1/2"	3/8"
UP3-38-34N	3/4"	3/8"
UP3-12-34N	3/4"	1/2"
UP3-14-34N	3/4"	1/4"
UP3-14-1N	1"	1/4"
UP3-12-1N	1"	1/2"
UP3-34-1N	1"	3/4"

## Bushes

Male Thread, Metric x  
Female Thread, Metric & BSPP

0447	Male Thread	Female Thread
UP3-14-M16	M16 x 1.5	1/4"
UP3-14-M18	M18 x 1.5	1/4"
UP3-14-M20	M20 x 1.5	1/4"
UP3-M16-M20	M20 x 1.5	M16 x 1.5
UP3-M16-M22	M22 x 1.5	M16 x 1.5
UP3-14-M22	M22 x 1.5	1/4"
UP3-38-M22	M22 x 1.5	3/8"

## Female Equal Socket



## Female Thread, BSPP

0447	Thread
UP4-18P	1/8"
UP4-12P	1/2"

## Female Thread, Metric

0447	Thread
UP4-MM05	M5 x 0.8
UP4-MM06	M6 x 1.0
UP4-MM08	M8 x 1.0
UP4-MM10	M10 x 1.0
UP4-MM12	M12 x 1.5
UP4-MM14	M14 x 1.5
UP4-MM16	M16 x 1.5
UP4-MM18	M18 x 1.5
UP4-MM20	M20 x 1.5
UP4-MM22	M22 x 1.5
UP4-MM26	M26 x 1.5
UP4-MM30	M30 x 1.5

## Female Thread, NPS

0447	Thread
UP4-18N	1/8"
UP4-14N	1/4"
UP4-38N	3/8"
UP4-12N	1/2"
UP4-1N	1"

## Female Unequal Socket



## Female Thread, BSPP

0447	Thread	Thread
UP4-18-14P	1/8"	1/4"
UP4-38-18P	3/8"	1/8"
UP4-38-14P	3/8"	1/4"
UP4-12-14P	1/2"	1/4"
UP4-12-38P	1/2"	3/8"
UP4-34-14P	3/4"	1/4"
UP4-34-38P	3/4"	3/8"
UP4-12-34P	1/2"	3/4"
UP4-1-34P	1"	3/4"
UP4-1-38P	1"	3/8"
UP4-1-12P	1"	1/2"

## Male x Female Unequal Socket Connectors



### Male Thread, BSPT x Female Thread, BSPP

0447	Male Thread	Female Thread
UP13-18-14P	1/8"	1/4"
UP13-18-38P	1/8"	3/8"
UP13-14-38P	1/4"	3/8"
UP13-14-12P	1/4"	1/2"
UP13-38-12P	3/8"	1/2"
UP13-12-34P	1/2"	3/4"
UP13-34-1P	3/4"	1"

## Bulkhead Connector



### Male Thread, BSPP

0447	Thread
MB18	1/8"
MB14	1/4"
MB38	3/8"
MB12	1/2"
MB34	3/4"
MB1	1"
MB114	1.1/4"
MB112	1.1/2"
MB2	2"



### Male Thread, Metric x Female Thread, BSPP

0447	Thread	Thread
MBM18	M16 x 1.5	1/8"
MBM14	M20 x 1.5	1/4"
MBM38	M26 x 1.5	3/8"
MBM12	M28 x 1.5	1/2"
MBM34	M34 x 1.5	3/4"
MBM1	M42 x 1.5	1"

## Connectors



### Male Thread, BSPT x Female Thread, BSPP

0447	Thread
UP13-18	1/8"
UP13-14	1/4"
UP13-38	3/8"
UP13-12	1/2"
UP13-34	3/4"
UP13-1	1"

### Male Thread, Metric x Female Thread, BSPP

0447	Thread	Thread
UP13-M5-18	M5 x 0.8	1/8"
UP13-M5-14	M5 x 0.8	1/4"
UP13-M6-18	M6 x 1.0	1/8"
UP13-M6-14	M6 x 1.0	1/4"

### Male x Female Thread, Metric

0447	Thread	Thread
UP13-M5-M5	M5 x 0.8	M5 x 0.8

### Male Thread, NPT x Female Thread, NPS

0447	Thread
UP13-18N	1/8"
UP13-14N	1/4"
UP13-38N	3/8"
UP13-12N	1/2"
UP13-34N	3/4"
UP13-1N	1"

## Reducing Connector



### Male, NPT x Female Thread, NPS

0447	Thread	Thread
UP13-18-14N	1/8"	1/4"
UP13-18-38N	1/8"	3/8"
UP13-14-38N	1/4"	3/8"
UP13-14-12N	1/4"	1/2"
UP13-38-12N	3/8"	1/2"



### Male Thread, UNF x Female Thread, BSPP

0447	Male Thread	Female Thread
UP13-18-14U	1/4"	1/8"

## Equal Elbows



### Male Thread, BSPT

0447	Thread
UP5-18	1/8"
UP5-14	1/4"
UP5-38	3/8"
UP5-12	1/2"
MML16	1"

Tech Sheet 20183



### Male Thread x Female Thread, NPT

0447	Thread
UP5-18N	1/8"
UP5-14N	1/4"
UP5-12N	1/2"
UP5-34N	3/4"
UP5-1N	1"



### Female Thread, BSPT

0447	Thread
UP6-18	1/8"
UP6-14	1/4"
UP6-38	3/8"
UP6-12	1/2"
UP6-34	3/4"
UP6-1	1"
UP6-114	1.1/4"

Tech Sheet 20183



### Female Thread, NPT

0447	Thread
UP6-14N	1/4"
UP6-34N	3/4"



### Female Thread, Metric

0447	Thread
UP6-M5	M5 x 0.8

## Equal Elbows

### Male Thread x Female Thread, BSPT



0447	Thread
UP7-18	1/8"
UP7-14	1/4"
UP7-38	3/8"
UP7-12	1/2"
UP7-1	1"
UP7-114	1.1/4"
UP7-112	1.1/2"
Tech Sheet 20183	

### Male Thread x Female Thread, Metric



0447	Thread
UP7-MM05	M5 x 0.8

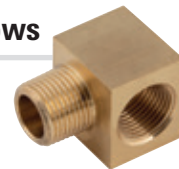
### Male Thread, BSPT x Female Thread, BSPP



0447	Thread
MFL02	1/8"
MFL04	1/4"
MFL06	3/8"
MFL08	1/2"
MFL12	3/4"
MFL16	1"
MFL20	1.1/4"
MFL24	1.1/2"
MFL32	2"

## Compact 90° Elbows

### Male Thread, BSPT x Female Thread, BSPP



0447	Thread
UP7-18C	1/8"
UP7-14C	1/4"
UP7-38C	3/8"
UP7-12C	1/2"

## 45° Elbows

### Female Thread, BSPP



0447	Thread
UP11-12F	1/2"
UP11-34F	3/4"
UP11-114F	1.1/4"
UP11-112F	1.1/2"
UP11-2F	2"

## Equal Tees

### Female Thread, BSPP x Male Thread, BSPT x Female Thread, BSPP



0447	Thread
UP22-18	1/8"
UP22-14	1/4"
UP22-38	3/8"
UP22-12	1/2"
UP22-34	3/4"

### Male Thread, BSPT x Male Thread, BSPT x Female Thread, BSPP



0447	Thread
UP14-18	1/8"
UP14-38	3/8"
UP14-12	1/2"

### Male Thread, BSPT x Female Thread, BSPP x Male Thread, BSPT



0447	Thread
UP15-18	1/8"
UP15-14	1/4"
UP15-38	3/8"
UP15-12	1/2"

### Female Thread, BSPP x Female Thread, BSPP x Male Thread, BSPT



0447	Thread
UP16-18	1/8"
UP16-14	1/4"
UP16-38	3/8"
UP16-12	1/2"
UP16-34	3/4"
UP16-1	1"

### Female Thread, BSPP



0447	Thread
UP8-18	1/8"
UP8-14	1/4"
UP8-38	3/8"
UP8-12	1/2"
UP8-34	3/4"
UP8-1	1"
UP8-114	1.1/4"
UP8-112	1.1/2"
Tech Sheet 20184	

### Female Thread, NPT



0447	Thread
UP8-18N	1/8"
UP8-14N	1/4"
UP8-12N	1/2"

### Male Thread, BSPT



0447	Thread
UP9-18	1/8"
UP9-14	1/4"
UP9-38	3/8"
UP9-12	1/2"
Tech Sheet 20184	

## Female Block Equal Tee



### Female Thread, BSPT

0447	Thread
UP10-18	1/8"
UP10-14	1/4"
UP10-38	3/8"
Tech Sheet 20185	

## Male x Female 45° Equal Elbow



### Male Thread, BSPT x Female Thread, BSPP

Q447	Thread
UP11-18	1/8"
UP11-14	1/4"

Tech Sheet 20186

## Cross Adaptors



### Male Thread, BSPT

Q447	Thread
UP19-14	1/4"
UP19-38	3/8"



### Male Thread, BSPT x Female Thread, BSPP

Q447	Thread
UP20-14	1/4"
UP20-38	3/8"
UP20-12	1/2"
UP20-34	3/4"
UP20-1	1"



### Female Thread, BSPP

Q447	Thread
UP21-14	1/4"
UP21-38	3/8"
UP21-12	1/2"

## Barrel Nipple



### Male Thread, BSPT

Q447	Thread
TT18	1/8"
TT14	1/4"
TT38	3/8"
TT12	1/2"
TT34	3/4"
TT1	1"

## Swivel Union



### Male Thread, BSPT

1000	Thread	Thread
LD10/10K	1/8"	1/8"
LD13/13K	1/4"	1/4"
LD17/17K	3/8"	3/8"
LD21/21K	1/2"	1/2"
LD26/26K	3/4"	3/4"
LD33/33K	1"	1"

Tech Sheet 20775



### Female Thread, BSPP

1000	Thread
LDF21/21K	1/2"
LDF26/26K	3/4"
LDF33/33K	1"
LDF42/42K	1.1/4"
LDF48/48K	1.1/2"
LDF52/52K	2"

## Equal Y Branch Outlet



### Female Thread, BSPP

1000	Thread
UP17-18	1/8"
UP17-14	1/4"
UP17-38	3/8"
UP17-12	1/2"

### Female Thread, BSPP x Female Thread, BSPP x Male Thread, BSPT

1000	Thread
UP18-18	1/8"
UP18-14	1/4"
UP18-38	3/8"
UP18-12	1/2"



## Triple Outlet



### Female Thread, BSPP

1000	Thread
DO-17	3/8"
DO-21	1/2"

Tech Sheet 20776

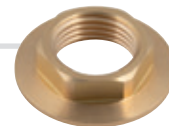
## Locknuts



### Female Thread, BSPP

Q447	Thread
UP12-18	1/8"
UP12-14	1/4"
UP12-38	3/8"
UP12-12	1/2"
UP12-58	5/8"
UP12-34	3/4"
UP12-78	7/8"
UP12-1	1"
UP12-114	1.1/4"
UP12-112	1.1/2"

## Flanged Locknuts



### Female Thread, BSPP

Q447	Thread
UP12-38F	3/8"
UP12-12F	1/2"
UP12-34F	3/4"
UP12-1F	1"
UP12-114F	1.1/4"
UP12-112F	1.1/2"



### Female Thread, Metric

Q447	Thread
UP12-MM10	M10 x 1.0
UP12-MM12	M12 x 1.0
UP12-MM14.1	M14 x 1.0
UP12-MM14	M14 x 1.5
UP12-MM15	M15 x 1.0
UP12-MM16	M16 x 1.5
UP12-MM18	M18 x 1.5
UP12-MM20	M20 x 1.5
UP12-MM22	M22 x 1.5
UP12-MM24	M24 x 1.5
UP12-MM26	M26 x 1.5
UP12-MM28	M28 x 1.5
UP12-MM30	M30 x 1.5
UP12-MM34	M34 x 1.5
UP12-MM38	M38 x 1.5

## BRASS ADAPTORS



## Flanged Plugs



## Male Thread, BSPP

1000	Thread
VFP10	1/8"
VFP13	1/4"
VFP17	3/8"
VFP21	1/2"
VFP26	3/4"
VFP33	1"
VFP42	1.1/4"
VFP48	1.1/2"
VFP52	2"

## Hollow Plugs



## Male Thread, BSPT

0447	Thread
VHP18	1/8"
VHP14	1/4"
VHP38	3/8"
VHP12	1/2"
VHP58	5/8"
VHP34	3/4"
VHP1	1"
VHP114	1.1/4"

## Male Thread, BSPP

0447	Thread
VHP18P	1/8"
VHP14P	1/4"
VHP38P	3/8"
VHP12P	1/2"
VHP58P	5/8"
VHP34P	3/4"
VHP1P	1"
VHP114P	1.1/4"
VHP112P	1.1/2"
VHP2P	2"

## Male Thread, NPT

0447	Thread
VHP18N	1/8"
VHP14N	1/4"
VHP38N	3/8"
VHP12N	1/2"
VHP34N	3/4"
VHP2N	2"

## Solid Plugs

## Male Thread, Metric

0447	Thread
VHPM05	M5 x 0.8
VHPM06	M6 x 1.0
VHPM08	M8 x 1.0
VHPM14	M14 x 1.5
VHPM16	M16 x 1.5
VHPM18	M18 x 1.5
VHPM20	M20 x 1.5
VHPM22	M22 x 1.5
VHPM24	M24 x 1.5
VHPM26	M26 x 1.5
VHPM28	M28 x 1.5

## Male Thread, BSPT

0447	Thread
VPS18	1/8"
VPS14	1/4"
VPS38	3/8"
VPS12	1/2"
VPS58	5/8"
VPS34	3/4"
VPS78	7/8"
VPS1	1"
VPS114	1.1/4"
VPS112	1.1/2"
VPS2	2"

## Male Thread, BSPP

0447	Thread
VPS18P	1/8"
VPS14P	1/4"
VPS38P	3/8"
VPS12P	1/2"
VPS58P	5/8"
VPS34P	3/4"
VPS1P	1"
VPS112P	1.1/2"
VPS2P	2"

## Male Thread, NPT

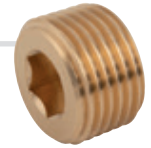
0447	Thread
VPS18N	1/8"
VPS14N	1/4"
VPS38N	3/8"
VPS12N	1/2"
VPS34N	3/4"
VPS1N	1"
VPS114N	1.1/4"
VPS112N	1.1/2"
VPS2N	2"

## Square Head Plugs

## Male Thread, BSPP

1000	Thread
VPO14	1/4"
VPO38	3/8"
VPO12	1/2"
VPO34	3/4"
VPO1	1"
VPO114	1.1/4"
VPO112	1.1/2"
VPO2	2"

## Allen Key Plugs



## Male Thread, BSPT

0447	Thread
AK-TT18	1/8"
AK-TT14	1/4"
AK-TT38	3/8"
AK-TT12	1/2"
AK-TT34	3/4"
AK-TT1	1"

## Male Thread, BSPP

0447	Thread
AK-PP18	1/8"
AK-PP14	1/4"
AK-PP38	3/8"
AK-PP12	1/2"

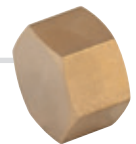
## Male Thread, Metric

0447	Thread
AK-MM08	M8 x 1.0
AK-MM10	M10 x 1.0
AK-MM12	M12 x 1.5
AK-MM14	M14 x 1.5
AK-MM16	M16 x 1.5
AK-MM18	M18 x 1.5
AK-MM20	M20 x 1.5
AK-MM22	M22 x 1.5
AK-MM24	M24 x 1.5

## Male Thread, NPT

0447	Thread
AK-NN18	1/8"
AK-NN14	1/4"
AK-NN38	3/8"
AK-NN12	1/2"

## Caps



## Female Thread, BSPP

0447	Thread
VCAP10	1/8"
VCAP13	1/4"
VCAP17	3/8"
VCAP21	1/2"
VCAP26	3/4"
VCAP33	1"
VCAP42	1.1/4"
VCAP48	1.1/2"

## Air Vents



## Male Thread, BSPP

1000	Thread
AK-VV18	1/8"
AK-VV14	1/4"
AK-VV12	1/2"

# NICKEL PLATED BRASS ADAPTORS



Temperature:  
+300 °C

Maximum Working Pressure  
1/8" - 150 bar 1/4" - 100 bar 3/8" - 75 bar 1/2" - 50 bar 3/4" - 85 bar 1" - 80 bar

## Equal Male Adaptors



### Male Thread, BSPT

0422	Thread
DN10/10K	1/8"
DN13/13K	1/4"
DN17/17K	3/8"
DN21/21K	1/2"
DN26/26K	3/4"
DN33/33K	1"
DN42/42K	1.1/4"
DN50/50K	1.1/2"

Tech Sheet 1620



### Male Thread, Metric & BSPP

0422	Thread
DN05/05	M5
DN10/10	1/8"
DN13/13	1/4"
DN17/17	3/8"
DN21/21	1/2"
DN26/26	3/4"
DN33/33	1"
DN42/42	1.1/4"
DN50/50	1.1/2"
DN55/55	2"

Tech Sheet 1620

## Unequal Male Adaptors



### Male Thread, BSPT

0422	Thread	Thread
DN10/13K	1/8"	1/4"
DN10/17K	1/8"	3/8"
DN10/21K	1/8"	1/2"
DN13/17K	1/4"	3/8"
DN13/21K	1/4"	1/2"
DN17/21K	3/8"	1/2"
DN21/26K	1/2"	3/4"
DN26/33K	3/4"	1"
DN33/42K	1"	1.1/4"
DN42/50K	1.1/4"	1.1/2"
DN50/55K	1.1/2"	2"

Tech Sheet 1622



### Male Thread, Metric & BSPP

0422	Thread	Thread
DN05/10	M5	1/8"
DN10/13	1/8"	1/4"
DN10/17	1/8"	3/8"
DN13/17	1/4"	3/8"
DN13/21	1/4"	1/2"
DN17/21	3/8"	1/2"
DN21/26	1/2"	3/4"
DN26/33	3/4"	1"
DN33/42	1"	1.1/4"
DN42/50	1.1/4"	1.1/2"
DN50/55	1.1/2"	2"

Tech Sheet 1622

## Male x Female Adaptors



### Male Thread, BSPT x Female Thread, BSPP

0422	Male Thread	Female Thread
RL10/10K	1/8"	1/8"
RL10/13K	1/8"	1/4"
RL10/17K	1/8"	3/8"
RL13/13K	1/4"	1/4"
RL13/17K	1/4"	3/8"
RL13/21K	1/4"	1/2"
RL17/17K	3/8"	3/8"
RL17/21K	3/8"	1/2"
RL17/26K	3/8"	3/4"
RL21/21K	1/2"	1/2"
RL21/26K	1/2"	3/4"
RL21/33K	1/2"	1"
RL26/26K	3/4"	3/4"
RL26/33K	3/4"	1"
RL33/33K	1"	1"

Tech Sheet 10704



### Male Thread, BSPP x Female Thread, Metric & BSPP

0422	Male Thread	Female Thread
RL05/05	M5	M5
RL05/10	M5	1/8"
RL10/10	1/8"	1/8"
RL10/13	1/8"	1/4"
RL10/17	1/8"	3/8"
RL13/13	1/4"	1/4"
RL13/17	1/4"	3/8"
RL13/21	1/4"	1/2"
RL17/17	3/8"	3/8"
RL17/21	3/8"	1/2"
RL17/26	3/8"	3/4"
RL21/21	1/2"	1/2"
RL21/26	1/2"	3/4"
RL21/33	1/2"	1"
RL26/26	3/4"	3/4"
RL26/33	3/4"	1"
RL33/33	1"	1"

Tech Sheet 10704



### Extension, Male Thread, BSPP x Female Thread, BSPP

0422	Thread	Length mm
RL05/05X	M5	18.5
RL10/10X	1/8"	22
RL10/10Y	1/8"	42
RL13/13X	1/4"	35
RL13/13Y	1/4"	51
RL17/17X	3/8"	41
RL21/21X	1/2"	35
RL26/26X	3/4"	50
RL33/33X	1"	50

Tech Sheet 10704

X = Standard Length (as photo), Y = Extended Length

### Male Thread, NPTF x Female Thread, BSPP

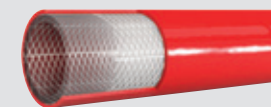
0422	Thread
RL10/10KN	1/8"
RL13/13KN	1/4"
RL17/17KN	3/8"

Tech Sheet 10704

### Male Thread, BSPP x Female Thread, NPTF

0422	Thread
RL10/10N	1/8"
RL13/13N	1/4"
RL17/17N	3/8"
RL21/21N	1/2"

Tech Sheet 10704



You might also need  
**Hose & Tubing**  
see **Section 12**



# NICKEL PLATED BRASS ADAPTORS



## Equal Swivel Connectors

### Male Thread, BSPT x Female Thread, BSPP



0422	Thread
2110-18	1/8"
2110-14	1/4"
2110-38	3/8"

Tech Sheet 10704

### Male Thread, BSPP x Female Thread, BSPP



0422	Thread
2115-18	1/8"
2115-14	1/4"
2115-38	3/8"

Tech Sheet 10704

Note:  
Un-plated only.

### Male Thread, BSPT x Female Thread, BSPP



0422	Thread
SF10	1/8"
SF13	1/4"
SF17	3/8"
SF21	1/2"

Tech Sheet 10704

## Equal Bulkhead Connectors

### Female Thread, Metric & BSPP x Male Thread, Metric



0422	Female Thread	Male Thread
3060-M5	M5	M10 x 1
3060-1/8	1/8"	M16 x 1.5
3060-1/4	1/4"	M20 x 1.5
3060-3/8	3/8"	M26 x 1.5
3060-1/2	1/2"	M28 x 1.5
3060-3/4	3/4"	M33 x 1.5
3060-1	1"	M42 x 1.5

Tech Sheet 10702

## Equal Sockets

### Female Thread, Metric & BSPP



0422	Thread
MU05	M5
MU10	1/8"
MU13	1/4"
MU17	3/8"
MU21	1/2"
MU26	3/4"
MU33	1"

Tech Sheet 1621

## Unequal Sockets

### Female Thread, Metric & BSPP



0422	Thread	Thread
MU05/10	M5	1/8"
MU10/13	1/8"	1/4"
MU10/17	1/8"	3/8"
MU10/21	1/8"	1/2"
MU13/17	1/4"	3/8"
MU13/21	1/4"	1/2"
MU17/21	3/8"	1/2"
MU17/26	3/8"	3/4"
MU21/26	1/2"	3/4"
MU21/33	1/2"	1"
MU26/33	3/4"	1"

Tech Sheet 1621

## Reducing Bushes

### Male Thread, BSPP x Female Thread, Metric & BSPP



0422	Male Thread	Female Thread
RK05/10	1/8"	M5
RK05/13	1/4"	M5
RK10/13	1/4"	1/8"
RK10/17	3/8"	1/8"
RK10/21	1/2"	1/8"
RK13/17	3/8"	1/4"
RK13/21	1/2"	1/4"
RK13/26	3/4"	1/4"
RK17/21	1/2"	3/8"
RK17/26	3/4"	3/8"
RK17/33	1"	3/8"
RK21/26	3/4"	1/2"
RK21/33	1"	1/2"
RK26/33	1"	3/4"
RK33/42	1.1/4"	1"
RK42/50	1.1/2"	1.1/4"
RK42/55	2"	1.1/4"
RK50/55	2"	1.1/2"

Tech Sheet 1623

### Male Thread, BSPT x Female Thread, BSPP



0422	Male Thread	Female Thread
RK05/10K	1/8"	M5x0.8
RK10/13K	1/4"	1/8"
RK10/17K	3/8"	1/8"
RK13/17K	3/8"	1/4"
RK10/21K	1/2"	1/8"
RK13/21K	1/2"	1/4"
RK17/21K	1/2"	3/8"
RK13/26K	3/4"	1/4"
RK17/26K	3/4"	3/8"
RK21/26K	3/4"	1/2"
RK13/33K	1"	1/4"
RK17/33K	1"	3/8"
RK21/33K	1"	1/2"
RK26/33K	1"	3/4"
RK21/42K	1.1/4"	1/2"
RK26/42K	1.1/4"	3/4"
RK33/42K	1.1/4"	1"
RK33/50K	1.1/2"	1"
RK33/55K	2"	1"
RK42/55K	2"	1.1/4"
RK50/55K	2"	1.1/2"

Tech Sheet 1623

Note:  
\*Un-plated only.

### Male Thread, BSPP x Female Thread, Metric & BSPP



0422	Male Thread	Female Thread
2095-13/10	1/4"	1/8"
2095-17/10	3/8"	1/8"
2095-17/13	3/8"	1/4"
2095-21/13	1/2"	1/4"
2095-21/17	1/2"	3/8"
2095-26/21	3/4"	1/2"
2095-33/21	1"	1/2"
2095-33/26	1"	3/4"

Tech Sheet 1623

## Equal Elbows



### Female Thread, Metric & BSPP

0422	Thread
WIM5	M5
WI10	1/8"
WI13	1/4"
WI17	3/8"
WI21	1/2"
WI26	3/4"
WI33	1"

Tech Sheet 1093



### Male Thread, Metric & BSPT x Female Thread, Metric & BSPP

0422	Thread
WSLM5	M5
WSL10	1/8"
WSL13	1/4"
WSL17	3/8"
WSL21	1/2"
WSL26	3/4"
WSL33	1"

Tech Sheet 1093



### Male Thread, Metric & BSPT

0422	Thread
WAM5	M5
WA10	1/8"
WA13	1/4"
WA17	3/8"
WA21	1/2"
WA26	3/4"
WA33	1"

Tech Sheet 1093

## Equal Tees



### Offset Male Thread, BSPT x Female Thread, BSPP

0422	Thread
TD10	1/8"
TD13	1/4"
TD17	3/8"
TD21	1/2"
TD26	3/4"
TD33	1"

Tech Sheet 1094



### Branch Female Thread, Metric & BSPP x Male Thread, Metric & BSPT

0422	Thread
TCM5	M5
TC10	1/8"
TC13	1/4"
TC17	3/8"
TC21	1/2"
TC26	3/4"
TC33	1"

Tech Sheet 1094



### Male Thread, BSPT

0422	Thread
TA10	1/8"
TA13	1/4"
TA17	3/8"
TA21	1/2"
TA26	3/4"
TA33	1"

Tech Sheet 1094



### Female Thread, Metric & BSPP

0422	Thread
TIM5	M5
TI10	1/8"
TI13	1/4"
TI17	3/8"
TI21	1/2"
TI26	3/4"
TI33	1"

Tech Sheet 1094



### Branch Male Thread, Metric & BSPT x Female Thread, Metric & BSPP

0422	Thread
TKL05	M5
TKL10	1/8"
TKL13	1/4"
TKL17	3/8"
TKL21	1/2"
TKL26	3/4"
TKL33	1"

Tech Sheet 1094



### Offset Female Thread, Metric & BSPP x Male Thread, Metric & BSPT

0422	Thread
TB05	M5
TB10	1/8"
TB13	1/4"
TB17	3/8"
TB21	1/2"
TB26	3/4"
TB33	1"

Tech Sheet 1094

# NICKEL PLATED BRASS ADAPTORS



## Equal Block Elbows



**Male Thread,  
BSPP x Female Thread, BSPP**

0422	Thread
6070-1/8	1/8"
6070-1/4	1/4"

## Equal Block Tees



**Male Thread,  
BSPP x Female Thread, BSPP**

0422	Thread
6080-1/8	1/8"
6080-1/4	1/4"

## 90° Wall Bracket Fitting



**Female Thread, BSPP**

0422	Thread
5050-1/2	1/2"

Tech Sheet 10703

## Equal Crosses



**Male Thread  
BSPT x Female Thread, BSPP**

0422	Thread
FD10	1/8"
FD13	1/4"
FD17	3/8"
FD21	1/2"

Tech Sheet 1095



**Male Thread, BSPT**

0422	Thread
FE10	1/8"
FE13	1/4"
FE17	3/8"
FE21	1/2"

Tech Sheet 1095



**Female Thread, BSPP**

0422	Thread
FC10	1/8"
FC13	1/4"
FC17	3/8"
FC21	1/2"

Tech Sheet 1095

## Equal Y Connectors



**Female Thread, BSPP**

0422	Thread
ZO-10	1/8"
ZO-13	1/4"
ZO-17	3/8"
ZO-21	1/2"

Tech Sheet 1096



**Male Thread,  
BSPT x Female Thread, BSPP**

0422	Male Thread
XO-10	1/8"
XO-13	1/4"
XO-17	3/8"
XO-21	1/2"

Tech Sheet 1096

## Triple Outlet



**Female Thread, BSPP**

0422	Thread
TO06NP	3/8"



**For Malleable Iron Fittings**  
...see pages 1178-1380



**For Malleable Iron Accessories**  
...see pages 1184-1385

## Blanking Plugs



### Male Thread, BSPT

0422	Thread
VZ10K	1/8"
VZ13K	1/4"
VZ17K	3/8"
VZ21K	1/2"
VZ26K	3/4"
VZ33K	1"



### Male Thread, Metric & BSPP

0422	Thread
VZ05	M5
VZ10	1/8"
VZ13	1/4"
VZ17	3/8"
VZ21	1/2"
VZ26	3/4"
VZ33	1"

Tech Sheet 10704

## Blanking Caps



### Female Thread, BSPP

0422	Thread
VK10	1/8"
VK13	1/4"
VK17	3/8"
VK21	1/2"
VK26	3/4"
VK33	1"

Tech Sheet 10700

### Nitrile O-Ring Seal & Hexagon Recess, Male Thread, Metric & BSPP



0422	Thread
ZV-05	M5
ZV-10	1/8"
ZV-13	1/4"
ZV-17	3/8"
ZV-21	1/2"
ZV-26	3/4"
ZV-33	1"

Tech Sheet 10704

### FKM O-Ring Seal & Hexagon Recess, Male Thread, Metric & BSPP



0422	Thread
ZV-05FKM	M5
ZV-10FKM	1/8"
ZV-13FKM	1/4"
ZV-17FKM	3/8"
ZV-21FKM	1/2"

## Lock Nuts



### Female Thread, BSPP

0422	Thread
KM10WN	1/8"
KM13WN	1/4"
KM17WN	3/8"
KM21WN	1/2"
KM26WN	3/4"

Tech Sheet 10702

## Allen Key Plugs



### Male Thread, BSPT

0422	Thread
3025-1/8	1/8"
3025-1/4	1/4"
3025-3/8	3/8"
3025-1/2	1/2"
3025-3/4	3/4"
3025-1	1"

Tech Sheet 10700



### Male Thread, BSPP

0422	Thread
3026-1/8	1/8"
3026-1/4	1/4"
3026-3/8	3/8"
3026-1/2	1/2"
3026-3/4	3/4"

Tech Sheet 10700

## Equal Socket



### Female Thread, BSPP

0447	Thread
FFA02/02NP	1/8"
FFA04/04NP	1/4"
FFA06/06NP	3/8"
FFA08/08NP	1/2"
FFA12/12NP	3/4"
FFA16/16NP	1"

## Unequal Reducing Sockets



### Female Thread, BSPP

0447	Thread	Thread
FFR04/02NP	1/4"	1/8"
FFR06/04NP	3/8"	1/4"
FFR08/04NP	1/2"	1/4"
FFR08/06NP	1/2"	3/8"
FFR12/04NP	3/4"	1/4"
FFR12/06NP	3/4"	3/8"
FFR12/08NP	3/4"	1/2"
FFR16/08NP	1"	1/2"
FFR16/12NP	1"	3/4"

## Caps



### Female Thread, Metric

0447	Thread
CAP04NP	1/4"
CAP06NP	3/8"
CAP08NP	1/2"
CAP16NP	1"



For Reusable  
Hydraulic Fittings  
... see page 41

## Hexagonal Plugs



### Male Thread, BSPT

0447	Thread
PBT02SNP	1/8"
PBT04SNP	1/4"
PBT06SNP	3/8"



### Male Thread, BSPP

0447	Thread
PBP02SNP	1/8"
PBP06SNP	3/8"
PBP08SNP	1/2"

## Allen Key Plugs



### Male Thread, NPT

0447	Thread
AKN02NP	1/8"
AKN04NP	1/4"
AKN06NP	3/8"
AKN08NP	1/2"



### Steel, Male Thread, BSPT

0447	Thread
SAK02	1/8"
SAK04	1/4"
SAK06	3/8"
SAK08	1/2"

## Lock Nuts



### Female Thread, Metric

0447	Thread
LN15NP	M15 x 1.0
LN20NP	M20 x 1.5
LN24NP	M24 x 1.5
LN26NP	M26 x 1.5
LN28NP	M28 x 1.5



### Female Thread, BSPP

0447	Thread
LN02NP	1/8"
LN04NP	1/4"
LN06NP	3/8"
LN08NP	1/2"
LN12NP	3/4"
LN16NP	1"

## Reducing Bush



### Male x Female, BSPP

1050	Male Thread	Female Thread
PRB34-12	3/4"	1/2"
PRB1-12	1"	1/2"
PRB1-34	1"	3/4"
PRB114-12	1.1/4"	1/2"
PRB114-34	1.1/4"	3/4"
PRB114-1	1.1/4"	1"
PRB112-34	1.1/2"	3/4"
PRB112-1	1.1/2"	1"
PRB112-114	1.1/2"	1.1/4"
PRB2-34	2"	3/4"
PRB2-1	2"	1"
PRB2-114	2"	1.1/4"
PRB2-112	2"	1.1/2"
PRB212-2	2.1/2"	2"
PRB3-2	3"	2"
PRB3-212	3"	2.1/2"

Tech Sheet 10640

## Male x Female Reducer



### Male x Female, BSPP

1050	Male Thread	Female Thread
PRE12-38	1/2"	3/8"
PRE34-12	3/4"	1/2"
PRE1-12	1"	1/2"
PRE1-34	1"	3/4"
PRE114-1	1.1/4"	1"
PRE112-114	1.1/2"	1.1/4"
PRE2-112	2"	1.1/2"

Tech Sheet 10640

## Reducing Nipple



### Male, BSPP

1050	Thread	Thread
PRN34-12	3/4"	1/2"
PRN1-34	1"	3/4"
PRN114-1	1.1/4"	1"
PRN112-114	1.1/2"	1.1/4"
PRN2-112	2"	1.1/2"
PRN212-2	2.1/2"	2"

Tech Sheet 10640

## Nipple



### Male, BSPP

1050	Thread
PEN12-12	1/2"
PEN34-34	3/4"
PEN1-1	1"
PEN114-114	1.1/4"
PEN112-112	1.1/2"
PEN2-2	2"
PEN3-3	3"

Tech Sheet 10640

## Plug



### Male, BSPP

1050	Thread
PTP12	1/2"
PTP34	3/4"
PTP1	1"
PTP114	1.1/4"
PTP112	1.1/2"
PTP2	2"
PTP212	2.1/2"

Tech Sheet 10640

## Reducing Socket



### Female, BSPP

1050	Thread	Thread
PRS34-12	3/4"	1/2"
PRS1-34	1"	3/4"
PRS114-1	1.1/4"	1"
PRS112-114	1.1/2"	1.1/4"
PRS2-112	2"	1.1/2"

Tech Sheet 10640

## Socket



### Female, BSPP

1050	Thread
PES12-12	1/2"
PES34-34	3/4"
PES1-1	1"
PES114-114	1.1/4"
PES112-112	1.1/2"
PES2-2	2"
PES3-3	3"

Tech Sheet 10640

## Cap



### Female, BSPP

1050	Thread
PTC12	1/2"
PTC34	3/4"
PTC1	1"
PTC114	1.1/4"
PTC112	1.1/2"
PTC2	2"

Tech Sheet 10640

# NYLON ADAPTORS



Nylon 6-6

 Temperature:  
-20 to 110°C

 Working Pressure:  
Up to 14 bar (200 psi) at 20°C

 Fittings Dimensions: refer to tube ID or OD,  
with respect to the common application

## Unequal Nipple



BSPT

0497	Thread	Thread
PN1-14-18	1/4"	1/8"
PN1-38-14	3/8"	1/4"
PN1-12-14	1/2"	1/4"
PN1-12-38	1/2"	3/8"

## Equal Nipple



BSPT

0497	Thread
PN2-18	1/8"
PN2-14	1/4"
PN2-38	3/8"
PN2-12	1/2"

## Reducing Socket



BSPT

0497	Thread A	Thread B
PN6-14-18	1/8"	1/4"
PN6-38-18	1/8"	3/8"
PN6-38-14	1/4"	3/8"
PN6-12-14	1/4"	1/2"
PN6-34-14	1/4"	3/4"
PN6-12-38	3/8"	1/2"

## Female Socket



BSPT

0497	Thread
PN5-18	1/8"
PN5-14	1/4"
PN5-38	3/8"
PN5-12	1/2"

## Bush



BSPT

0497	Male Thread	Female Thread
PN3-18-14	1/4"	1/8"
PN3-18-12	1/2"	1/8"
PN3-14-18	1/8"	1/4"
PN3-14-14	1/4"	1/4"
PN3-14-38	3/8"	1/4"
PN3-38-18	1/8"	3/8"
PN3-38-14	1/4"	3/8"
PN3-38-38	3/8"	3/8"
PN3-38-12	1/2"	3/8"
PN3-12-14	1/4"	1/2"
PN3-12-38	3/8"	1/2"
PN3-12-12	1/2"	1/2"

## Reducing Bush



BSPT

0497	Male Thread	Female Thread
PN4-14-18	1/4"	1/8"
PN4-38-18	3/8"	1/8"
PN4-38-14	3/8"	1/4"
PN4-12-14	1/2"	1/4"
PN4-12-38	1/2"	3/8"
PN4-34-14	3/4"	1/4"
PN4-34-38	3/4"	3/8"
PN4-34-12	3/4"	1/2"

## Equal Elbow



BSPT

0497	Thread
PN10-18	1/8"
PN10-14	1/4"
PN10-38	3/8"
PN10-12	1/2"

## Reducing Elbow



BSPT

0497	Thread	Thread
PN11-14-18	1/4"	1/8"
PN11-38-14	3/8"	1/4"

## Equal Tee



BSPT

0497	Thread
PN7-14	1/4"
PN7-38	3/8"
PN7-12	1/2"

# PVDF ADAPTORS



Fittings made of PVDF function better than nylon when exposed to a wide range of temperatures and high corrosive chemicals.

This enables them to be used in industries such as chemical processing due to their excellent chemical resistance properties.

Working Temperature: -20°C to +120°C

Maximum Working Pressure: 14 bar at 20°C

## Equal Nipple



### BSPT

0472	Thread
PV2-18	1/8"
PV2-14	1/4"
PV2-38	3/8"
PV2-12	1/2"

Tech Sheet 60237

## Unequal Nipple



### BSPT

0472	Thread	Thread
PV1-14-18	1/4"	1/8"
PV1-38-14	3/8"	1/4"
PV1-12-14	1/2"	1/4"
PV1-12-38	1/2"	3/8"

Tech Sheet 60237

## Female Socket



### BSPT

0472	Thread
PV5-18	1/8"
PV5-14	1/4"
PV5-38	3/8"
PV5-12	1/2"

Tech Sheet 60237

## Reducing Socket



### BSPT

0472	Thread	Thread
PV6-14-18	1/4"	1/8"
PV6-38-14	3/8"	1/4"
PV6-12-14	1/2"	1/4"

Tech Sheet 60237

## Reducing Bush



### BSPT

0472	Male Thread	Female Thread
PV4-14-18	1/4"	1/8"
PV4-38-18	3/8"	1/8"
PV4-38-14	3/8"	1/4"
PV4-12-18	1/2"	1/8"
PV4-12-14	1/2"	1/4"
PV4-12-38	1/2"	3/8"

Tech Sheet 60237

## Bush



### BSPT

0472	Male Thread	Female Thread
PV3-18-38	1/8"	3/8"
PV3-14-18	1/4"	1/8"
PV3-14-14	1/4"	1/4"
PV3-14-38	1/4"	3/8"
PV3-38-18	3/8"	1/8"
PV3-38-14	3/8"	1/4"
PV3-38-12	3/8"	1/2"
PV3-12-14	1/2"	1/4"

Tech Sheet 60237

## Equal Elbow



### BSPT

0472	Thread
PV10-38	3/8"
PV10-12	1/2"

Tech Sheet 60237

## Equal Tee



### BSPT

0472	Thread
PV7-18	1/8"
PV7-14	1/4"

Tech Sheet 60237

## Blanking Plug



### BSPT

0472	Thread
PV12-18	1/8"
PV12-14	1/4"
PV12-38	3/8"
PV12-12	1/2"

Tech Sheet 60237

## Blanking Cap



### BSPT

0472	Thread
PV13-14	1/4"
PV13-38	3/8"
PV13-12	1/2"

Tech Sheet 60237



# 3000lb FORGED PIPE FITTINGS, ANSI B16.11



**Working Temperature:**  
0°C to +180°C



**Maximum Working Pressure:**  
206 bar

Pressure and temperature ratings according to ASME B16.11

Available up to 4"

## 90° Equal Elbow



**Female Thread, NPT**

0506	Thread
1013-0003	1/2"
1013-0005	1"
1013-0008	2"

Tech Sheet 68800

## Equal Tee



**Female Thread, NPT**

0506	Thread
1013-0009	1/4"
1013-0011	1/2"
1013-0013	1"
1013-0016	2"

Tech Sheet 68800

## Equal Hexagon Nipple



**Male Thread, NPT**

0506	Thread
1013-0025	1/4"
1013-0027	1/2"
1013-0028	3/4"
1013-0029	1"
1013-0030	1.1/4"
1013-0032	2"

Tech Sheet 68800

## Equal Union



**Female Thread, NPT**

0506	Thread
1013-0034	3/8"
1013-0035	1/2"
1013-0038	1.1/4"
1013-0039	1.1/2"
1013-0040	2"

Tech Sheet 68800

## Hexagon Plug



**Male Thread, NPT**

0506	Thread
1013-0041	1/4"
1013-0042	3/8"
1013-0043	1/2"
1013-0044	3/4"
1013-0048	2"

Tech Sheet 68800

## Equal Coupling



**Female Thread, NPT**

0506	Thread
1013-0050	3/8"
1013-0051	1/2"
1013-0052	3/4"
1013-0053	1"
1013-0054	1.1/4"
1013-0056	2"

Tech Sheet 68800



For **Flanges & Gaskets**  
see pages **1386-1390**

# 150lb 316 STAINLESS STEEL PIPE FITTINGS



stainless  
steel



HAITIMA

This technical data is applicable to the full range of 316 Stainless Steel Adaptors only.

**Threads:** Tapered in conformity with ISO 7.1, BS 21, DIN 2999. Parallel in conformity with BS 2779, ISO 228.

**Dimensions:** All components are manufactured to the requirements of ASTM A-351.

The dimensions are in accordance with ANSI B16.3.

**Working Temperature:**  
-20°C to +260°C

**Working Pressure:**  
20 bar

## Equal Cross



### Female Thread, BSPP

1111	Thread
EC-18	1/8"
EC-14	1/4"
EC-38	3/8"
EC-12	1/2"
EC-34	3/4"
EC-1	1"
EC-114	1.1/4"
EC-112	1.1/2"
EC-2	2"

Tech Sheet 1800

## Equal Tee



### Female Thread, BSPP

1111	Thread
ET-18	1/8"
ET-14	1/4"
ET-38	3/8"
ET-12	1/2"
ET-34	3/4"
ET-1	1"
ET-114	1.1/4"
ET-112	1.1/2"
ET-2	2"
ET-212	2.1/2"
ET-3	3"
ET-4	4"

Tech Sheet 1799

## Straight Hose Tails



### Male Thread, BSPT

1111	Thread	To Suit Hose ID
HT-18-06	1/8"	1/4" (6mm)
HT-14	1/4"	1/4" (6mm)
HT-14-08	1/4"	5/16" (8mm)
HT-14-10	1/4"	3/8" (10mm)
HT-14-13	1/4"	1/2" (13mm)
HT-38-08	3/8"	5/16" (8mm)
HT-38	3/8"	3/8" (10mm)
HT-38-13	3/8"	1/2" (13mm)
HT-12-06	1/2"	1/4" (6mm)
HT-12-10	1/2"	3/8" (10mm)
HT-12	1/2"	1/2" (13mm)
HT-12-19	1/2"	3/4" (19mm)
HT-12-25	1/2"	1" (25mm)
HT-12-16	1/2"	5/8"
HT-34-13	3/4"	1/2" (13mm)
HT-34	3/4"	3/4" (19mm)
HT-1-19	1"	3/4" (19mm)
HT-1	1"	1" (25mm)
HT-1-31	1"	1.1/4" (31mm)
HT-114	1.1/4"	1.1/4" (31mm)
HT-112	1.1/2"	1.1/2" (38mm)
HT-2	2"	2" (50mm)
HT-212	2.1/2"	2.1/2" (63mm)
HT-3	3"	3" (75mm)
HT-4	4"	4" (100mm)

Tech Sheet 1795



### Female Fixed Thread, BSPP

1111	Thread	To Suit Hose ID
SFHT10/06	1/8"	6mm (1/4")
SFHT13/06	1/4"	6mm (1/4")
SFHT13/09	1/4"	9mm (3/8")
SFHT17/10	3/8"	10mm (3/8")
SFHT21/13	1/2"	13mm (1/2")
SFHT26/19	3/4"	19mm (3/4")
SFHT33/25	1"	25mm (1")
SFHT42/32	1.1/4"	32mm (1.1/4")
SFHT48/38	1.1/2"	38mm (1.1/2")
SFHT52/51	2"	51mm (2")

Tech Sheet 2077

## Equal Hose Joiner



1111	To Suit Hose ID
DS06-SS	1/4" (6mm)
DS08-SS	5/16" (8mm)
DS10-SS	3/8" (10mm)
DS13-SS	1/2" (13mm)

Tech Sheet 20778



## Swivel Female Thread, 60° Coned Seat, BSPP

1111	Thread	To Suit Hose ID
FH13/14SS	1/4"	1/4" (6mm)
FH17/38SS	3/8"	3/8" (10mm)
FH21/12SS	1/2"	1/2" (13mm)
FH26/34SS	3/4"	3/4" (19mm)
FH33/19SS	1"	3/4"
FH48/38SS	1.1/2"	1.1/2"
FH52/50SS	2"	2"

Tech Sheet 20779

## Barrel Nipple



### Male Thread, BSPT

1111	Thread	Length mm
BN-18X30	1/8"	30
BN-18	1/8"	40
BN-14	1/4"	40
BN-14X80	1/4"	80
BN-38	3/8"	40
BN-38X80	3/8"	80
BN-12	1/2"	60
BN-12X80	1/2"	80
BN-34	3/4"	60
BN-34X80	3/4"	80
BN-1	1"	60
BN-1X100	1"	100
BN-1X150	1"	150
BN-114	1.1/4"	80
BN-112	1.1/2"	80
BN-2	2"	100
BN-212	2.1/2"	100
BN-3	3"	120
BN-4	4"	120

Tech Sheet 1803



# For Stainless Steel 304 & 316 see section 10 page 1225

Many of our products are produced in stainless steel (304 or 316) so if that is your focus and to simplify product selection, we have all our products regardless of type or application grouped in **section 10** (coded yellow) of our catalogue.

Food safety starts with rigorous hygiene and nickel-containing stainless steels are the superior, reliable standard at every link of the food and industry supply chain. Though it may not be inherently antimicrobial, stainless steel, particularly 304 or 316 stainless steels, are one of the best materials to use in a food and beverage processing environment.

## Industries

- Food
- Brewing
- Transport
- Pharmaceuticals
- Chemicals

Stainless steel is commonly used in the food industry because of its non-toxicity and ease of cleaning. This material does not react chemically with other substances and can be cleaned with high temperatures. In the process of disinfection, we can also use most of the available detergents. Stainless steel is not absorbent and after rinsing its surface with water, you can freely use it for food processing. This material is extremely durable and does not require regular and expensive maintenance. Although stainless steel can be slightly more expensive than other raw materials, it is an excellent compromise between the interests of the consumer and manufacturer.



# 150lb 316 STAINLESS STEEL PIPE FITTINGS

stainless  
steel



9.03 Adaptors

## Close Nipple



### Male Thread, BSPP

1111	Thread
CPN-14	1/4"
CPN-38	3/8"
CPN-12	1/2"
CPN-34	3/4"
CPN-1	1"
CPN-114	1.1/4"
CPN-112	1.1/2"
CPN-2	2"
CPN-212	2.1/2"

Tech Sheet 1801

## Female Reducing Socket



### Female Thread, BSPP

1111	Thread	Thread
FRS-14-18	1/4"	1/8"
FRS-38-14	3/8"	1/4"
FRS-38-18	3/8"	1/8"
FRS-12-38	1/2"	3/8"
FRS-12-14	1/2"	1/4"
FRS-12-18	1/2"	1/8"
FRS-34-14	3/4"	1/4"
FRS-34-12	3/4"	1/2"
FRS-34-38	3/4"	3/8"
FRS-1-34	1"	3/4"
FRS-1-14	1"	1/4"
FRS-1-38	1"	3/8"
FRS-1-12	1"	1/2"
FRS-114-1	1.1/4"	1"
FRS-114-12	1.1/4"	1/2"
FRS-114-34	1.1/4"	3/4"
FRS-112-1	1.1/2"	1"
FRS-112-34	1.1/2"	3/4"
FRS-112-114	1.1/2"	1.1/4"
FRS-2-34	2"	3/4"
FRS-2-1	2"	1"
FRS-2-112	2"	1.1/2"
FRS-2-114	2"	1.1/4"
FRS-212-114	2.1/2"	1.1/4"
FRS-212-2	2.1/2"	2"
FRS-3-114	3"	1.1/4"
FRS-3-2	3"	2"
FRS-3-212	3"	2.1/2"
FRS-4-2	4"	2"
FRS-4-3	4"	3"

Tech Sheet 1802

## 45° Equal Elbow



### Female Thread, BSPP

1111	Thread
OE-18	1/8"
OE-14	1/4"
OE-38	3/8"
OE-12	1/2"
OE-34	3/4"
OE-1	1"
OE-114	1.1/4"
OE-112	1.1/2"
OE-2	2"
OE-212	2.1/2"
OE-3	3"
OE-4	4"

Tech Sheet 1796

## 45° Equal Bracket Elbow



### Female Thread, BSPP

1111	Thread
WEP-12	1/2"

Tech Sheet 1797

## 90° Equal Elbow



### Female Thread, BSPP

1111	Thread
EE-18	1/8"
EE-14	1/4"
EE-38	3/8"
EE-12	1/2"
EE-34	3/4"
EE-1	1"
EE-114	1.1/4"
EE-112	1.1/2"
EE-2	2"
EE-212	2.1/2"
EE-3	3"
EE-4	4"

Tech Sheet 1797

## 90° Street Elbow



### Male Thread, BSPT x Female Thread, BSPP

1111	Male Thread	Female Thread
SE-18	1/8"	1/8"
SE-14	1/4"	1/4"
SE-38	3/8"	3/8"
SE-12	1/2"	1/2"
SE-34	3/4"	3/4"
SE-1	1"	1"
SE-114	1.1/4"	1.1/4"
SE-112	1.1/2"	1.1/2"
SE-2	2"	2"
SE-212	2.1/2"	2.1/2"
SE-3	3"	3"
SE-4	4"	4"

Tech Sheet 1798

## Equal Nipple



### Male Thread, BSPT

1111	Thread
HN-18	1/8"
HN-14	1/4"
HN-38	3/8"
HN-12	1/2"
HN-34	3/4"
HN-1	1"
HN-114	1.1/4"
HN-112	1.1/2"
HN-2	2"
HN-212	2.1/2"
HN-3	3"
HN-4	4"

Tech Sheet 1804

### Male Thread, NPT

1111	Thread
NPT62001010	1/8"
NPT62001313	1/4"
NPT62001717	3/8"
NPT62002121	1/2"
NPT62002727	3/4"
NPT62003232	1"
NPT62004242	1.1/4"
NPT62004848	1.1/2"
NPT62006060	2"
NPT62007676	2.1/2"
NPT62008989	3"
NPT62000114	4"

Tech Sheet 1804



Hose Tails, Adaptors, Fittings & Manifolds

# 150lb 316 STAINLESS STEEL PIPE FITTINGS

stainless  
steel



## Hexagon Blanking Cap



### Female Thread, BSPP

1111	Thread
HBC-18	1/8"
HBC-14	1/4"
HBC-38	3/8"
HBC-12	1/2"
HBC-34	3/4"
HBC-1	1"
HBC-114	1.1/4"
HBC-112	1.1/2"
HBC-2	2"
HBC-212	2.1/2"
HBC-3	3"
HBC-4	4"

Tech Sheet 1805

## Blanking Plug



### Male Thread, BSPT

1111	Thread
HP-18	1/8"
HP-14	1/4"
HP-38	3/8"
HP-12	1/2"
HP-34	3/4"
HP-1	1"
HP-114	1.1/4"
HP-112	1.1/2"
HP-2	2"
HP-212	2.1/2"
HP-3	3"

Tech Sheet 1806

### Male Thread, NPT

1111	Thread
NPT62181000	1/8"
NPT62181300	1/4"
NPT62181700	3/8"
NPT62182100	1/2"
NPT62182700	3/4"
NPT62183200	1"
NPT62184200	1.1/4"
NPT62184800	1.1/2"
NPT62186000	2"
NPT62187600	2.1/2"
NPT62188900	3"

Tech Sheet 1808

## Female Union



### Female Thread, BSPP (2 Piece)

1111	Thread
HU-18	1/8"
HU-14	1/4"
HU-38	3/8"
HU-12	1/2"
HU-34	3/4"
HU-1	1"
HU-114	1.1/4"
HU-112	1.1/2"
HU-2	2"
HU-212	2.1/2"
HU-3	3"
HU-4	4"

Tech Sheet 1807

## Male/Female Union



### Male Thread, BSPT x Female Thread, BSPP (2 Piece)

1111	Thread
MFU-14	1/4"
MFU-38	3/8"
MFU-12	1/2"
MFU-34	3/4"
MFU-1	1"
MFU-114	1.1/4"
MFU-112	1.1/2"
MFU-2	2"
MFU-4	4"

Tech Sheet 1808

## Lock Nut



### Female Thread, BSPP

1111	Thread
LN-18	1/8"
LN-14	1/4"
LN-38	3/8"
LN-12	1/2"
LN-34	3/4"
LN-1	1"
LN-114	1.1/4"
LN-112	1.1/2"
LN-2	2"
LN-212	2.1/2"
LN-3	3"
LN-4	4"

Tech Sheet 1809

## Reducing Bush



### Male Thread, BSPT x Female Thread, BSPP

1111	Male Thread	Female Thread
RB-14-18	1/4"	1/8"
RB-38-14	3/8"	1/4"
RB-38-18	3/8"	1/8"
RB-12-14	1/2"	1/4"
RB-12-18	1/2"	1/8"
RB-12-38	1/2"	3/8"
RB-34-12	3/4"	1/2"
RB-34-14	3/4"	1/4"
RB-34-18	3/4"	1/8"
RB-34-38	3/4"	3/8"
RB-1-12	1"	1/2"
RB-1-14	1"	1/4"
RB-1-34	1"	3/4"
RB-1-38	1"	3/8"
RB-114-1	1.1/4"	1"
RB-114-12	1.1/4"	1/2"
RB-114-34	1.1/4"	3/4"
RB-112-1	1.1/2"	1"
RB-112-12	1.1/2"	1/2"
RB-112-34	1.1/2"	3/4"
RB-112-114	1.1/2"	1.1/4"
RB-2-1	2"	1"
RB-2-34	2"	3/4"
RB-2-112	2"	1.1/2"
RB-2-114	2"	1.1/4"
RB-212-1	2.1/2"	1"
RB-212-2	2.1/2"	2"
RB-212-112	2.1/2"	1.1/2"
RB-212-114	2.1/2"	1.1/4"
RB-3-1	3"	1"
RB-3-112	3"	1.1/2"
RB-3-2	3"	2"
RB-3-212	3"	2.1/2"
RB-4-3	4"	3"

Tech Sheet 1810

### Male Thread, NPTF x Female Thread, NPTF

1111	Male Thread	Female Thread
NPT62041310	1/4"	1/8"
NPT62041713	3/8"	1/4"
NPT62042117	1/2"	3/8"
NPT62042721	3/4"	1/2"
NPT62043227	1"	3/4"
NPT62044232	1.1/4"	1"
NPT62044842	1.1/2"	1.1/4"
NPT62046048	2"	1.1/2"
NPT62047660	2.1/2"	2"
NPT62048976	3"	2.1/2"



# 150lb 316 STAINLESS STEEL PIPE FITTINGS

stainless  
steel



9.03 Adaptors

## Reducing Nipple



### Male Thread, BSPT

1111	Thread	Thread
RHN-14-18	1/4"	1/8"
RHN-12-14	1/2"	1/4"
RHN-12-18	1/2"	1/8"
RHN-12-38	1/2"	3/8"
RHN-38-14	3/8"	1/4"
RHN-38-18	3/8"	1/8"
RHN-34-12	3/4"	1/2"
RHN-34-14	3/4"	1/4"
RHN-34-18	3/4"	1/8"
RHN-34-38	3/4"	3/8"
RHN-1-12	1"	1/2"
RHN-1-14	1"	1/4"
RHN-1-34	1"	3/4"
RHN-1-38	1"	3/8"
RHN-114-1	1.1/4"	1"
RHN-114-12	1.1/4"	1/2"
RHN-114-34	1.1/4"	3/4"
RHN-112-1	1.1/2"	1"
RHN-112-12	1.1/2"	1/2"
RHN-112-34	1.1/2"	3/4"
RHN-112-114	1.1/2"	1.1/4"
RHN-2-1	2"	1"
RHN-2-12	2"	1/2"
RHN-2-34	2"	3/4"
RHN-2-112	2"	1.1/2"
RHN-2-114	2"	1.1/4"
RHN-3-2	3"	2"

Tech Sheet 1811

## Welding Nipple



### Male Thread, BSPT

1111	Thread	Length mm
WN-18	1/8"	30
WN-14	1/4"	30
WN-38	3/8"	30
WN-12	1/2"	35
WN-34	3/4"	40
WN-1	1"	40
WN-114	1.1/4"	50
WN-112	1.1/2"	50
WN-2	2"	50
WN-212	2.1/2"	60
WN-3	3"	70
WN-4	4"	80

Tech Sheet 1813

## Square Head Plug



### Male Thread, BSPT

1111	Thread
SP-18	1/8"
SP-14	1/4"
SP-38	3/8"
SP-12	1/2"
SP-34	3/4"
SP-1	1"
SP-114	1.1/4"
SP-112	1.1/2"
SP-2	2"
SP-212	2.1/2"
SP-3	3"

Tech Sheet 1814

## Round Blanking Cap



### Female Thread, BSPP

1111	Thread
RC-18	1/8"
RC-14	1/4"
RC-38	3/8"
RC-12	1/2"
RC-34	3/4"
RC-1	1"
RC-114	1.1/4"
RC-112	1.1/2"
RC-2	2"
RC-212	2.1/2"
RC-3	3"

Tech Sheet 1812

## Threaded Half Socket



### Female Thread, BSPP

1111	Thread
HS-18	1/8"
HS-14	1/4"
HS-38	3/8"
HS-12	1/2"
HS-34	3/4"
HS-1	1"
HS-114	1.1/4"
HS-112	1.1/2"
HS-2	2"
HS-212	2.1/2"
HS-3	3"
HS-4	4"

Tech Sheet 1816

## Threaded Full Socket



### Female Thread, BSPP

1111	Thread
FS-18	1/8"
FS-14	1/4"
FS-38	3/8"
FS-12	1/2"
FS-34	3/4"
FS-1	1"
FS-114	1.1/4"
FS-112	1.1/2"
FS-2	2"
FS-212	2.1/2"
FS-3	3"
FS-4	4"

Tech Sheet 1815

### Female Thread, NPT

1111	Thread
NPT62061010	1/8"
NPT62061313	1/4"
NPT62061717	3/8"
NPT62062121	1/2"
NPT62062727	3/4"
NPT62063232	1"
NPT62064242	1.1/4"
NPT62064848	1.1/2"
NPT62066060	2"
NPT62067676	2.1/2"
NPT62068989	3"
NPT62060114	4"

## 316 Stainless Steel Tube

Seamless schedule 40 ASTM A312/AMSE SA312-A530.  
Conforms to NACE standard MR-01-75,  
Din50049-3.1.B.

N.B. Delivery may take up to  
48 hours.



### 3 Metre Lengths, Random

0214	NB	Wall Thickness mm
2028-5839	1/8"	1.73
2028-5854	1/4"	2.24
2028-5862	3/8"	2.31
2028-5870	1/2"	2.77
2028-5953	3/4"	2.87
2028-5961	1"	3.38
2028-5979	1.1/4"	3.56
2028-5987	1.1/2"	3.68
2028-5995	2"	3.91

Tech Sheet 831



Hose Tails, Adaptors, Fittings & Manifolds

# 3000lb 316 STAINLESS STEEL PIPE FITTINGS



- ASTM A182 316/L stainless steel
- NPT threaded to ANSI B2.1
- Dimensions to ANSI B16.11/BS3799
- BSPT threaded to ISO 7/1
- Sizes 1/4" to 2"
- Pressure/temperature ratings according to BS 3799
- Pressure rating performance will vary depending on temperature.

**Working Temperature:**  
-100°C to +525°C

**Maximum Working Pressure:**  
207 bar

## 90° Equal Female Elbow



### NPT

0434	Thread
1012-0001	1/4"
1012-0002	3/8"
1012-0003	1/2"
1012-0004	3/4"
1012-0005	1"
1012-0006	1.1/4"
1012-0007	1.1/2"
1012-0008	2"

Tech Sheet 20506

## 90° Equal Male/ Female Street Elbow



### NPT

0434	Thread
1012-0041	1/4"
1012-0042	3/8"
1012-0043	1/2"
1012-0044	3/4"
1012-0045	1"
1012-0046	1.1/4"
1012-0047	1.1/2"
1012-0048	2"

Tech Sheet 20515

## Equal Tee



### NPT

0434	Thread
1012-0049	1/4"
1012-0050	3/8"
1012-0051	1/2"
1012-0052	3/4"
1012-0053	1"
1012-0054	1.1/4"
1012-0055	1.1/2"
1012-0056	2"

Tech Sheet 20516

### BSPT

0434	Thread
1012-0009	1/4"
1012-0010	3/8"
1012-0011	1/2"
1012-0012	3/4"
1012-0013	1"
1012-0014	1.1/4"
1012-0016	2"

Tech Sheet 20494

## 45° Equal Female Elbow



### NPT

0434	Thread
1012-0025	1/4"
1012-0027	1/2"
1012-0028	3/4"
1012-0029	1"
1012-0030	1.1/4"
1012-0031	1.1/2"
1012-0032	2"

Tech Sheet 20505

### BSPT

0434	Thread
1012-0057	1/4"
1012-0058	3/8"
1012-0059	1/2"
1012-0060	3/4"
1012-0061	1"
1012-0062	1.1/4"
1012-0063	1.1/2"
1012-0064	2"

Tech Sheet 20495

## Socket Weld

0434	NB
1012-0017	1/4"
1012-0018	3/8"
1012-0019	1/2"
1012-0021	1"
1012-0022	1.1/4"
1012-0023	1.1/2"
1012-0024	2"

Tech Sheet 20521



## Socket Weld

0434	NB
1012-0033	1/4"
1012-0034	3/8"
1012-0035	1/2"
1012-0036	3/4"
1012-0037	1"
1012-0038	1.1/4"
1012-0039	1.1/2"

Tech Sheet 20520

## Socket Weld

0434	NB
1012-0065	1/4"
1012-0066	3/8"
1012-0067	1/2"
1012-0068	3/4"
1012-0069	1"
1012-0070	1.1/4"
1012-0071	1.1/2"
1012-0072	2"

Tech Sheet 20526



- ASTM A182 316/L stainless steel
- Dimensions to ANSI B16.11/BS3799
- Sizes 1/4" to 2"
- NPT threaded to ANSI B2.1
- BSPT threaded to ISO 7/1
- Pressure/temperature ratings according to BS 3799
- Pressure rating performance will vary depending on temperature.

 **Working Temperature:**  
-100°C to +525°C

 **Maximum Working Pressure:**  
207 bar

## Equal Cross



### NPT

0434	Thread
1012-0073	1/4"
1012-0074	3/8"
1012-0075	1/2"
1012-0076	3/4"
1012-0077	1"
1012-0078	1.1/4"
1012-0079	1.1/2"
1012-0080	2"

Tech Sheet 20504



### Socket Weld

0434	NB
1012-0082	3/8"
1012-0083	1/2"
1012-0084	3/4"
1012-0085	1"
1012-0086	1.1/4"
1012-0087	1.1/2"
1012-0088	2"

Tech Sheet 20519

## Male / Female Union



### NPT

0434	Thread
1012-0089	1/4"
1012-0090	3/8"
1012-0091	1/2"
1012-0092	3/4"
1012-0093	1"
1012-0094	1.1/4"
1012-0095	1.1/2"
1012-0096	2"

Tech Sheet 20518

## Female Union



### NPT

0434	Thread
1012-0097	1/4"
1012-0098	3/8"
1012-0099	1/2"
1012-0100	3/4"
1012-0101	1"
1012-0102	1.1/4"
1012-0103	1.1/2"
1012-0104	2"

Tech Sheet 20517

### BSPT

0434	Thread
1012-0106	3/8"
1012-0107	1/2"
1012-0108	3/4"
1012-0109	1"
1012-0110	1.1/4"
1012-0111	1.1/2"
1012-0112	2"

Tech Sheet 20500



### Socket Weld

0434	NB
1012-0113	1/4"
1012-0114	3/8"
1012-0115	1/2"
1012-0116	3/4"
1012-0117	1"
1012-0118	1.1/4"
1012-0119	1.1/2"
1012-0120	2"

Tech Sheet 20527

## Male Hex Nipple



### NPT

0434	Thread
1012-0121	1/4"
1012-0122	3/8"
1012-0123	1/2"
1012-0124	3/4"
1012-0125	1"
1012-0126	1.1/4"
1012-0127	1.1/2"
1012-0128	2"

Tech Sheet 20509

### BSPT

0434	Thread
1012-0129	1/4"
1012-0130	3/8"
1012-0131	1/2"
1012-0132	3/4"
1012-0133	1"
1012-0134	1.1/4"
1012-0135	1.1/2"
1012-0136	2"

Tech Sheet 20498

## Male Barrel Nipple



### NPT

0434	Thread	Length mm
1012-0137	1/4"	30
1012-0138	3/8"	40
1012-0139	1/2"	60
1012-0140	3/4"	60
1012-0141	1"	60
1012-0142	1.1/4"	80
1012-0143	1.1/2"	80
1012-0144	2"	100

Tech Sheet 20503



# 3000lb 316 STAINLESS STEEL PIPE FITTINGS



- ASTM A182 316/L stainless steel
- Dimensions to ANSI B16.11/BS3799
- Sizes 1/4" to 2"
- NPT threaded to ANSI B2.1
- BSPT threaded to ISO 7/1

- Pressure/temperature ratings according to BS 3799
- Pressure rating performance will vary depending on temperature.

Working Temperature:  
-100°C to +525°C

Maximum Working Pressure:  
207 bar

## Male Hex Reducing Nipple



### BSPT

0434	Thread	Thread
1012-0166	1/4"	1/8"
1012-0167	3/8"	1/8"
1012-0168	1/2"	1/4"
1012-0169	1/2"	3/8"
1012-0170	3/4"	3/8"
1012-0171	3/4"	1/2"
1012-0172	1"	1/2"
1012-0173	1"	3/4"
1012-0174	1.1/4"	3/4"
1012-0175	1.1/4"	1"
1012-0176	1.1/2"	1"
1012-0177	1.1/2"	1.1/4"
1012-0178	2"	1"
1012-0179	2"	1.1/4"
1012-0180	2"	1.1/2"

Tech Sheet 20499

### NPT

0434	Thread	Thread
1012-0145	1/4"	1/8"
1012-0146	3/8"	1/8"
1012-0147	3/8"	1/4"
1012-0148	1/2"	1/8"
1012-0149	1/2"	1/4"
1012-0150	1/2"	3/8"
1012-0151	3/4"	1/4"
1012-0152	3/4"	3/8"
1012-0153	3/4"	1/2"
1012-0154	1"	3/8"
1012-0155	1"	1/2"
1012-0156	1"	3/4"
1012-0157	1.1/4"	1/2"
1012-0158	1.1/4"	3/4"
1012-0159	1.1/4"	1"
1012-0160	1.1/2"	3/4"
1012-0161	1.1/2"	1"
1012-0162	1.1/2"	1.1/4"
1012-0163	2"	1"
1012-0164	2"	1.1/4"
1012-0165	2"	1.1/2"

Tech Sheet 20513

## Full Coupling



### NPT

0434	Thread
1012-0181	1/4"
1012-0182	3/8"
1012-0183	1/2"
1012-0184	3/4"
1012-0185	1"
1012-0186	1.1/4"
1012-0187	1.1/2"
1012-0188	2"

Tech Sheet 20507

### BSPT

0434	Thread
1012-0189	1/4"
1012-0190	3/8"
1012-0191	1/2"
1012-0192	3/4"
1012-0193	1"
1012-0194	1.1/4"
1012-0195	1.1/2"
1012-0196	2"

Tech Sheet 20496

## Socket Weld

0434	NB
1012-0197	1/4"
1012-0198	3/8"
1012-0199	1/2"
1012-0200	3/4"
1012-0201	1"
1012-0202	1.1/4"
1012-0203	1.1/2"
1012-0204	2"

Tech Sheet 20522

## Half Coupling



### NPT

0434	Thread
1012-0205	1/4"
1012-0206	3/8"
1012-0208	3/4"
1012-0209	1"
1012-0210	1.1/4"
1012-0211	1.1/2"
1012-0212	2"

Tech Sheet 20508

### BSPT

0434	Thread
1012-0213	1/4"
1012-0214	3/8"
1012-0215	1/2"
1012-0216	3/4"
1012-0217	1"
1012-0218	1.1/4"
1012-0219	1.1/2"
1012-0220	2"

Tech Sheet 20497

## Socket Weld

0434	NB
1012-0221	1/4"
1012-0222	3/8"
1012-0223	1/2"
1012-0224	3/4"
1012-0225	1"
1012-0226	1.1/4"
1012-0228	2"

Tech Sheet 20523

# 3000lb 316 STAINLESS STEEL PIPE FITTINGS

stainless  
steel



- ASTM A182 316/L stainless steel
- Dimensions to ANSI B16.11/BS3799
- Sizes 1/4" to 2"
- NPT threaded to ANSI B2.1
- BSPT threaded to ISO 7/1
- Pressure/temperature ratings according to BS 3799
- Pressure rating performance will vary depending on temperature.

**Working Temperature:**  
-100°C to +525°C

**Maximum Working Pressure:**  
207 bar

## Reducing Coupling



### NPT

0434	Thread	Thread
1012-0229	1/4"	1/8"
1012-0231	1/2"	1/4"
1012-0232	1/2"	3/8"
1012-0233	3/4"	3/8"
1012-0234	3/4"	1/2"
1012-0235	1"	1/2"
1012-0236	1"	3/4"
1012-0237	1.1/4"	3/4"
1012-0238	1.1/4"	1"
1012-0239	1.1/2"	1"
1012-0240	1.1/2"	1.1/4"
1012-0241	2"	1"
1012-0242	2"	1.1/4"
1012-0243	2"	1.1/2"

Tech Sheet 20512



### Socket Weld

0434	NB	NB
1012-0244	1/4"	1/8"
1012-0245	3/8"	1/4"
1012-0246	1/2"	1/4"
1012-0247	1/2"	3/8"
1012-0248	3/4"	3/8"
1012-0249	3/4"	1/2"
1012-0250	1"	1/2"
1012-0252	1.1/4"	1"
1012-0253	1.1/2"	1"
1012-0254	1.1/2"	1.1/4"
1012-0255	2"	1"
1012-0256	2"	1.1/4"
1012-0257	2"	1.1/2"

Tech Sheet 20524

## Reducing Bush



### NPT

0434	Thread	Thread
1012-0258	1/4"	1/8"
1012-0259	3/8"	1/8"
1012-0260	3/8"	1/4"
1012-0261	1/2"	1/8"
1012-0262	1/2"	1/4"
1012-0263	1/2"	3/8"
1012-0264	3/4"	1/4"
1012-0265	3/4"	3/8"
1012-0266	3/4"	1/2"
1012-0267	1"	1/4"
1012-0268	1"	3/8"
1012-0269	1"	1/2"
1012-0270	1"	3/4"
1012-0271	1.1/4"	1/2"
1012-0272	1.1/4"	3/4"
1012-0273	1.1/4"	1"
1012-0274	1.1/2"	3/4"
1012-0275	1.1/2"	1"
1012-0276	1.1/2"	1.1/4"
1012-0277	2"	1"
1012-0278	2"	1.1/4"
1012-0279	2"	1.1/2"

Tech Sheet 20511

### BSPT

0434	Thread	Thread
1012-0280	1/4"	1/8"
1012-0281	3/8"	1/8"
1012-0282	3/8"	1/4"
1012-0283	1/2"	1/8"
1012-0284	1/2"	1/4"
1012-0285	1/2"	3/8"
1012-0286	3/4"	1/4"
1012-0287	3/4"	3/8"
1012-0288	3/4"	1/2"
1012-0289	1"	1/4"
1012-0290	1"	3/8"
1012-0291	1"	1/2"
1012-0292	1"	3/4"
1012-0293	1.1/4"	1/2"
1012-0294	1.1/4"	3/4"
1012-0295	1.1/4"	1"
1012-0296	1.1/2"	3/4"
1012-0297	1.1/2"	1"
1012-0298	1.1/2"	1.1/4"
1012-0299	2"	1"
1012-0300	2"	1.1/4"
1012-0301	2"	1.1/2"

Tech Sheet 20502

## Hex Head Plug



### NPT

0434	Thread
1012-0302	1/4"
1012-0303	3/8"
1012-0304	1/2"
1012-0305	3/4"
1012-0306	1"
1012-0307	1.1/4"
1012-0308	1.1/2"
1012-0309	2"

Tech Sheet 20510

### BSPT

0434	Thread
1012-0310	1/4"
1012-0311	3/8"
1012-0312	1/2"
1012-0313	3/4"
1012-0314	1"
1012-0315	1.1/4"
1012-0316	1.1/2"
1012-0317	2"

Tech Sheet 20501

## Round Cap



### NPT

0434	Thread
1012-0318	1/4"
1012-0319	3/8"
1012-0320	1/2"
1012-0321	3/4"
1012-0322	1"
1012-0323	1.1/4"
1012-0324	1.1/2"
1012-0325	2"

Tech Sheet 20514

### Socket Weld

0434	NB
1012-0326	1/4"
1012-0327	3/8"
1012-0328	1/2"
1012-0329	3/4"
1012-0330	1"
1012-0331	1.1/4"
1012-0332	1.1/2"
1012-0333	2"

Tech Sheet 20525

# TUBING

stainless steel

## 316 Stainless Steel Tube

3 metre lengths next day.

6 metre lengths may take up to 3 working days to be delivered, dependant on weight and delivery address location. Additional carriage charges may apply.

For full details please contact our Business Development Team.

Minimum of 10 lengths is advised up to 8mm to prevent damage in transit.



### Seamless ASTM A269, Metric, 6 Metre Lengths

0214	OD mm	Wall Thickness mm	Max Pressure Bar
765-0610-6M	6	1	428
765-6X1.5-6M	6	1.5	627
765-0810-6M	8	1	321
765-8X1.5-6M	8	1.5	472
765-1013-6M	10	1	257
765-10X1.5-6M	10	1.5	385
765-12X1.5-6M	12	1.5	321
765-1515-6M	15	1.5	257
765-16X1.5-6M	16	1.5	235
765-1602-6M	16	2	321
765-20X2-6M	20	2	257
765-25X2.5-6M	25	2.5	210
765-30X3-6M	30	3	257

Tech Sheet 831

### Seamless ASTM A269, Metric, 3 Metre Lengths, Random

0214	OD mm	Wall Thickness mm	Max Pressure Bar
765-0610	6	1	428
765-6X1.5	6	1.5	627
765-6X2	6	2	942
765-0813	8	1	321
765-8X1.5	8	1.5	472
765-8X2	8	2	706
765-1013	10	1	257
765-10X1.5	10	1.5	385
765-10X2	10	2	564
765-1213	12	1	210
765-12X1.5	12	1.5	321
765-12X2	12	2	420
765-1513	15	1	200
765-15X1.5	15	1.5	257
765-15X2	15	2	376
765-16X1.5	16	1.5	235
765-16X2	16	2	321
765-18X1.5	18	1.5	235
765-18X2	18	2	314
765-20X1.5	20	1.5	212
765-20X2	20	2	257
765-20X3	20	3	424
765-22X1.5	22	1.5	193
765-22X2	22	2	256
765-25X1.5	25	1.5	169
765-25X2	25	2	226
765-25X2.5	25	2.5	210
765-25X3	25	3	339
765-28X2	28	2	201
765-30X3	30	3	257
765-35X3	35	3	242
765-42X3	42	3	201

Tech Sheet 831

### Seamless ASTM A269, Imperial, 3 Metre Lengths, Random

0214	OD	SWG	Max Pressure Bar
2020-1372	1/8"	20	718
2020-1380	1/4"	20	360
2020-1406	3/8"	20	240
2020-1414	1/2"	20	180
2020-1422	3/4"	20	120
2020-1430	1"	20	90

Tech Sheet 831

### Seamless ASTM A269, Imperial, 6 Metre Lengths, Random

0214	OD	SWG	Max Pressure Bar
2020-1372-6M	1/8"	20	750
2020-1380-6M	1/4"	20	360
2020-1406-6M	3/8"	20	240
2020-1414-6M	1/2"	20	180
2020-1422-6M	3/4"	20	120
2020-1430-6M	1"	20	90

Tech Sheet 831

**PANAM**



You might also need...  
**Stainless Steel Fittings**  
 see pages 166-178

## Elbows



### 90° Bends, Long

0706	OD
BSL2S-316-1	1"
BSL2S-316-1.5	1.1/2"
BSL2S-316-2	2"
BSL2S-316-2.5	2.1/2"
BSL2S-316-3	3"
BSL2S-316-4	4"

Tech Sheet 68082



### 90° Bends, Short

0706	OD
BS2WCL-316-1	1"
BS2WCL-316-1.5	1.1/2"
BS2WCL-316-2	2"
BS2WCL-316-2.5	2.1/2"
BS2WCL-316-3	3"
BS2WCL-316-4	4"

Tech Sheet 68082



### 45° Bends, Long

0706	OD
BSL2KS-316-1	1"
BSL2KS-316-1.5	1.1/2"
BSL2KS-316-2	2"
BSL2KS-316-2.5	2.1/2"
BSL2KS-316-3	3"
BSL2KS-316-4	4"

Tech Sheet 68082

## Tees



### Short Tees

0706	OD
BS7WWW-316-3/4	3/4"
BS7WWW-316-1	1"
BS7WWW-316-1.5	1.1/2"
BS7WWW-316-2	2"
BS7WWW-316-2.5	2.1/2"
BS7WWW-316-3	3"

Tech Sheet 68082



### Pulled Tees

0706	OD
BS7WWO-316-1	1"
BS7WWO-316-1.5	1.1/2"
BS7WWO-316-2	2"
BS7WWO-316-2.5	2.1/2"
BS7WWO-316-3	3"
BS7WWO-316-4	4"

Tech Sheet 68082

## Reducers



### Concentric Reducing Cones

0706	OD A	OD B
BSL31-316-1X0.5	1"	1/2"
BSL31-316-1.5X1	1.1/2"	1"
BSL31-316-2X1	2"	1"
BSL31-316-2X1.5	2"	1.1/2"
BSL31-316-2.5X1	2.1/2"	1"
BSL31-316-2.5X1.5	2.1/2"	1.1/2"
BSL31-316-2.5X2	2.1/2"	2"
BSL31-316-3X2	3"	2"
BSL31-316-3X2.5	3"	2.1/2"
BSL31-316-4X1.5	4"	1.1/2"
BSL31-316-4X2	4"	2"
BSL31-316-4X2.5	4"	2.1/2"
BSL31-316-4X3	4"	3"

Tech Sheet 68082



### Eccentric Reducing Cones

0706	OD A	OD B
BSL32-316075X0.5	3/4"	1/2"
BSL32-316-2X1	2"	1"
BSL32-316-2X1.5	2"	1.1/2"
BSL32-316-2.5X2	2.1/2"	2"
BSL32-316-3X2	3"	2"
BSL32-316-3X2.5	3"	2.1/2"
BSL32-316-4X1.5	4"	1.1/2"
BSL32-316-4X2	4"	2"
BSL32-316-4X3	4"	3"

Tech Sheet 68082

## IDF Weld Fittings



## Hex Nut

0706	Size
BSIDF-13H-1	1"
BSIDF-13H-1.5	1.1/2"
BSIDF-13H-2	2"
BSIDF-13H-2.5	2.1/2"
BSIDF-13H-3	3"

Tech Sheet 68081



## Welding Male

0706	Size
BSIDF-15-1	1"
BSIDF-15-1.5	1.1/2"
BSIDF-15-2	2"
BSIDF-15-2.5	2.1/2"
BSIDF-15-3	3"
BSIDF-15-4	4"

Tech Sheet 68081



## Welding Liner

0706	Size
BSIDF-14-1	1"
BSIDF-14-1.5	1.1/2"
BSIDF-14-2	2"
BSIDF-14-2.5	2.1/2"
BSIDF-14-3	3"
BSIDF-14-4	4"

Tech Sheet 68081



## EPDM Seal

0706	Size
BSIDF-SEAL-1	1"
BSIDF-SEAL-1.5	1.1/2"
BSIDF-SEAL-2	2"
BSIDF-SEAL-2.5	2.1/2"
BSIDF-SEAL-3	3"
BSIDF-SEAL-4	4"

Tech Sheet 68081

## RJT Weld Fittings



## Hex Nut

0706	Size
BSRJT-13H-1	1"
BSRJT-13H-1.5	1.1/2"
BSRJT-13H-2	2"
BSRJT-13H-2.5	2.1/2"
BSRJT-13H-3	3"
BSRJT-13H-4	4"

Tech Sheet 68081



## Welding Male

0706	Size
BSRJT-15-1	1"
BSRJT-15-1.5	1.1/2"
BSRJT-15-2	2"
BSRJT-15-2.5	2.1/2"
BSRJT-15-3	3"
BSRJT-15-4	4"

Tech Sheet 68081



## Welding Liner

0706	Size
BSRJT-14-1	1"
BSRJT-14-1.5	1.1/2"
BSRJT-14-2	2"
BSRJT-14-2.5	2.1/2"
BSRJT-14-3	3"
BSRJT-14-4	4"

Tech Sheet 68081



## Blanking Nut

0706	Size
BSRJT-13HBN-1	1"
BSRJT-13HBN-1.5	1.1/2"
BSRJT-13HBN-2	2"
BSRJT-13HBN-2.5	2.1/2"
BSRJT-13HBN-3	3"
BSRJT-13HBN-4	4"

Tech Sheet 68081



## EPDM Seal

0706	Size
BSRJT-SEAL-1	1"
BSRJT-SEAL-1.5	1.1/2"
BSRJT-SEAL-2	2"
BSRJT-SEAL-2.5	2.1/2"
BSRJT-SEAL-3	3"
BSRJT-SEAL-4	4"

Tech Sheet 68081

## RJT Fittings

Most process lines have to be frequently dismantled for cleaning and all ranges of our hygienic fittings are suitable for this purpose.

Clamp unions provide a crevice free connection with a rapid break down and assembly, with no tools required.

RJT unions are probably the most widely used for frequent break down and cleaning.

IDF unions provide an alternative security and limit unauthorised access.

Sizes to suit OD tube.



## RJT Spanner

0147	Size
RJT-SPANNER-1.0	1"
RJT-SPANNER-1.5	1.1/2"
RJT-SPANNER-2	2"
RJT-SPANNER-2.5	2.1/2"
RJT-SPANNER-3	3"
RJT-SPANNER-4	4"

Tech Sheet 68081

## Hygienic Tube

N.B. Delivery may take up to 48 hours.



## 3 Metre Lengths

0214	Size
ODT316L-W-H-1.0	1"
ODT316L-W-H-1.5	1.1/2"
ODT316L-W-H-2	2"
ODT316L-W-H-2.5	2.1/2"
ODT316L-W-H-3	3"
ODT316L-W-H-4	4"

Tech Sheet 68081

## Clamp Fittings



### Weld Ferrule

0707	Clamp Size
14MMP-0.5	1/2"
14MMP-0.75	3/4"
14MMP-1	1"
14MMP-1.5	1.1/2"
14MMP-2	2"
14MMP-2.5	2.1/2"
14MMP-3	3"
14MMP-4	4"

Tech Sheet 68084



### Heavy-duty Single Pin Clamp

0707	Clamp Size
13MHH-2.5	2.1/2"
13MHH-0.5	1/2" - 3/4"
13MHH-1	1" - 1.1/2"
13MHH-2	2"
13MHH-3	3"
13MHH-4	4"

Tech Sheet 68084



### End Cap

0707	Clamp Size
16AMP-0.5	1/2" - 3/4"
16AMP-1	1" - 1.1/2"
16AMP-2	2"
16AMP-2.5	2.1/2"
16AMP-3	3"
16AMP-4	4"

Tech Sheet 68084



### Heavy-duty Double Pin Clamp

0707	Clamp Size
13MHHM-1	1" - 1.1/2"
13MHHM-2	2"
13MHHM-2.5	2.1/2"
13MHHM-3	3"
13MHHM-4	4"

Tech Sheet 68084



### Clamp Joint Seal, EPDM

0707	Clamp Size
HFE03-050	1/2"
HFE03-075	3/4"
HFE03-1	1"
HFE03-1.5	1.1/2"
HFE03-2	2"
HFE03-2.5	2.1/2"
HFE03-3	3"
HFE03-4	4"

Tech Sheet 68084



stainless steel

You might also need...

**Hygienic Stainless Steel Butterfly Valves**

see page 967



# RJT COUPLINGS



## Weld Liner



### Stainless Steel

0354	Size
RJTWL1	1"
RJTWL112	1.1/2"
RJTWL2	2"
RJTWL212	2.1/2"
RJTWL3	3"

Tech Sheet 60554

## Hose Liner



### Stainless Steel

0354	Size
RJTHL1	1"
RJTHL112	1.1/2"
RJTHL2	2"
RJTHL212	2.1/2"
RJTHL3	3"

Tech Sheet 60554

## BSPP Adaptor



### Stainless Steel

0354	Size	Thread
RJTA1	1"	1"
RJTA112	1.1/2"	1.1/2"
RJTD2	2"	2"
RJTA3	3"	3"

Tech Sheet 60554

## Reducing Weld Liner



### Stainless Steel

0354	Size
RJTRWL2112	2" to 1.1/2"

Tech Sheet 60554

## Hex Nut



### Stainless Steel

0354	Size
RJTN1	1"
RJTN112	1.1/2"
RJTN2	2"
RJTN3	3"

Tech Sheet 60554

## Seal



0354	Size
RJTS1	1"
RJTS112	1.1/2"
RJTS2	2"
RJTS3	3"

Tech Sheet 60554

## Blank Liner



### Stainless Steel

0354	Size
RJTBL1	1"
RJTBL112	1.1/2"
RJTBL2	2"
RJTBL212	2.1/2"
RJTBL3	3"

Tech Sheet 60554

## Weld Male



### Stainless Steel

0354	Size
RJTWM1	1"
RJTWM112	1.1/2"
RJTWM2	2"
RJTWM3	3"

Tech Sheet 60554