



# techhose

QUALITY CONNECTIONS

Hydraulics

Pneumatics  
& Vacuum

Industrial

Compressed Air  
& Ring Main

Process &  
Instrumentation

---

## Fuelling, Lubrication, Wash Down & Misting

---

Water Guns & Couplings

# Heavy-duty, Brass Water Guns

- Inlet connection: 1/2" BSPP
- Automatic shut-off
- Adjustable spray pattern
- Rubber insulated body and handle
- Scuff resistant
- Trigger lock

Note: not suitable for use with steam.

 **Maximum Working Temperature:**  
+50°C

 **Maximum Working Pressure**  
25 bar

## BSPP Inlet, Brass

1369	Thread	Colour
WASH-GUN	1/2"	Blue
REDWASH-GUN	1/2"	Red



# Heavy-duty, Stainless Steel Hygienic Water Guns

- Colour coded for use in hygienic zone systems
- Inlet connection: 1/2" BSPP
- Automatic shut-off
- Adjustable spray pattern
- Non-marking rubber insulated body and handle
- Trigger lock

 **Maximum Working Temperature:**  
+90°C (intermittent use)

 **Maximum Working Pressure**  
25 bar

## BSPP Inlet, Stainless Steel

1369	Thread	Colour
HYGWASH-GUN	1/2"	White
HYGWASH-GUNR	1/2"	Red
HYGWASH-GUNG	1/2"	Green



# WASHDOWN & CLEANING PRODUCTS



## Water Guns



• Blue available to order



### Water Gun

1369	Inlet BSPP
WG02	1/2"

### Stainless Steel Water Gun

1369	Colour	Female Inlet BSP	Flow Rate
XGNSS	White	1/2"	25
XGNSSR	Red	1/2"	25

# WASHDOWN & CLEANING PRODUCTS



## High Pressure Water Quick Release Coupling & Plug

Interchangeable with:  
Nito High Pressure Water Coupling  
40 Series water coupling

**Maximum Working Pressure:**  
210 bar



### Female Coupling, BSPP

1369	Thread
PWQRC-38	3/8"



### Female Plug, BSPP

1369	Thread
PWQRP-38	3/8"

## Couplings to suit A Series Nozzles



### 1/4" BSPP Female Quick Release Coupling

1369
CDC-14F-14M-B



### 1/4" BSPP Male Quick Release Coupling

1369
CDC-14M-14M-B

## Coupling & Adaptor



### 1/4" Brass Bayonet, Female

1369
CDAX

# WATER GUN

## NiTO Ergo Water Gun

Hot-water gun with an elegant design with focus on ergonomics, quality and functionality. The shape ensures a thermal protection of the handle. The trigger is protected against unintentional activation for safety, and can be locked for prolonged use. Infinitely variable flow regulation optimises the water quantity, whatever the task. Made of impact-resistant composite material with a high resistance to chemicals.

 **Maximum Working Temperature:**  
+40°C

 **Maximum Working Pressure:**  
6 bar



1068	Coupling Size
40525A3	1/2"
40500A3	3/4"

## NiTO II Industry Water Gun

 **Maximum Working Temperature:**  
+90°C

 **Maximum Working Pressure:**  
25 bar



### BSPP

1068	Thread
30550A3	3/4"

## NiTO II Spray Nozzles



### For 15mm & 20mm Hose

1068	Nozzle
20000A4	1/2"



### 3/4" Female Thread

1068	Nozzle
20300A9	3/4"

## NiTO I Water Gun

 **Maximum Working Temperature:**  
+40°C

 **Maximum Working Pressure:**  
6 bar



### With On/Off & Linear Flow Control

1068	Thread
53800A1	1/2"
63820A1	3/4"

## NiTO Safety Couplings

**Note:** 6151SA8 suitable for NiTO II industry water gun.



1068	ID
6151SA8	1/2"
6150SA8	3/4"

## NiTO Safety Plugs

**Note:** 61640A8 suitable for NiTO II industry water gun.



1068	ID
61640A8	1/2"
61650A3	3/4"

## NiTO O-Rings for High Pressure Couplings



1068	Description
1107A8	Viton 20 Shore
1108A8	Viton 17 Shore



## NiTO High Pressure Water Couplings

 **Maximum Working Temperature:**  
+100°C

 **Maximum Working Pressure:**  
250 bar

**Material:** Brass and chromium plated

- Coupling set suitable for KEW high pressure cleaners



### Complete Coupling, Female, BSPP

1068	Thread
65506B3	3/8"
Tech Sheet 20361	



### Female, BSPP

1068	Thread
65500B3	3/8"
Tech Sheet 20361	



### Male, BSPP

1068	Thread
6550NB3	M22 x 1.5
Tech Sheet 20361	

## NiTO High Pressure Water Plugs

 **Maximum Working Temperature:**  
+100°C

 **Maximum Working Pressure:**  
250 bar

**Material:** Brass and chromium plated



### Female Metric & BSPP

1068	Thread
65610B9	3/8"
65632B9	M22 x 1.5

# NITO Original Water Couplings

Wide range of couplings that solve all thread and hose combination.



MAX  
25 BAR

-30 /  
+80 °C



# 1/2" SYSTEM



Working Temperature:  
-30°C to +80°C

Maximum Working Pressure:  
25 bar

Material:  
Brass nickel plating

Seal:  
Nitrile

## Couplings



### Male, BSPP

1068	Thread	Operation
5350NA3	1/2"	No Valve
5353NA3	1/2"	Valved
5352NA3	3/4"	No Valve



### Female, Metric & BSPP

1068	Thread	Operation
53500A3	1/2"	No Valve
53520A3	3/4"	No Valve
53530A3	3/4"	Valved
5353GA3	M22 x 1	Valved



### Hose Tail

1068	To Suit Hose ID	Operation
5349SA3	3/8"	No Valve
5350SA3	1/2"	No Valve
5351SA3	3/4"	No Valve
5353SA3	1/2"	Valved
5354SA3	3/4"	Valved

## Plugs



### Male, Metric & BSPP

1068	Thread
5364BA3	3/8"
53640A3	1/2"
5364AA3	3/4"



### Female, Metric & BSPP

1068	Thread
53610A3	1/2"
5361AA3	3/4"
53620A3	M22 x 1



### Hose Tail

1068	ID	ID mm
5360DA3	1/4"	6
5360BA3	3/8"	8
53600A3	1/2"	13
5360CA3	5/8"	16



### Equal

1068
53650A3



### Double Hose Tail

1068	ID
5360AA3	1/2" & 3/4"



### To suit Water Gun, BSPP

1068	Thread
53611A3	1/2"

## Adaptors



### Reducing Bush

1068	Male Thread	Female Thread
53690A3	1/2"	3/4"
63690A3	3/4"	1"
53700A3	1/2"	M22 x 1



### Reducing Bush

1068	Male Thread	Female Thread
5371AA3	3/4"	1/2"



### Reducing Bush

1068	Male Thread	Female Thread
5349BA8	1/2"	3/8"
53490A8	3/4"	1/2"

## Hose Union



### BSPP

1068	Thread	To Suit Hose ID
53670A3	1/2"	1/2"

## Adjustable Nozzle



1068	ID
53750A3	1/2"

# 1/2" SYSTEM



Working Temperature: -30°C to +80°C  
 Maximum Working Pressure: 25 bar  
 Material: Brass nickel plating  
 Seal: Nitrile

## Hose Union Washer



1068
1-290A8

## NiTO O-Rings



1068
53470A8

## NiTO Washers



1068	Description
53440A8	1/2"

# 3/4" SYSTEM



Working Temperature: -30°C to +80°C  
 Maximum Working Pressure: 25 bar  
 Material: Brass nickel plating  
 Seal: Nitrile

## Couplings



### Female, BSPP

1068	Thread	Operation
63500A3	3/4"	No Valve
63530A3	3/4"	Valved



### Hose Tail

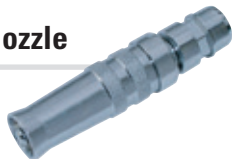
1068	To Suit Hose ID	Operation
6353SA3	3/4"	Valved
6350SA3	3/4"	No Valve

## Hose Union



1068	To Suit Hose ID	ID
6367AA3	3/4"	1/2"
63670A3	3/4"	3/4"

## Adjustable Nozzle



1068	ID
63750A3	3/4"

## Plugs



### Male, BSPP

1068	Thread
6364AA3	1/2"
63640A3	3/4"



### Female, BSPP

1068	Thread
6361AA3	1/2"
63610A3	3/4"



### Hose Tail

1068	To Suit Hose ID	To Suit Hose ID mm
6360BA3	1/2"	13
63600A3	3/4"	16



### Double Hose Tail

1068	To Suit Hose ID
6360AA3	1" & 3/4"

## NiTO O-Rings



1068
63470A8

## NiTO Washers



1068
63440A8

**Redashe**



For Hose Reels  
see pages 1456-1462



# 1" SYSTEM



**Working Temperature:**  
-30°C to +80°C

**Maximum Working Pressure:**  
25 bar

**Material:**  
Brass nickel plating

**Seal:**  
Nitrile

## Couplings



### Female, BSPP

1068	Thread	Operation
73500A3	1"	No Valve
73530A3	1"	Valved

## Plugs



### Male, BSPP

1068	Thread
73640A3	1"



### Female, BSPP

1068	Thread
73610A3	1"



### Hose Tail

1068	To Suit Hose ID
7360BA3	3/4"
73600A3	1"

# CLICK™ SYSTEM



**Working Temperature:**  
-30°C to +80°C

**Maximum Working Pressure:**  
25 bar

- Click™ coupling system for the professional market - compatible with the most popular plastic couplings
- The same high quality as the original NiTO couplings

- 5 year function guarantee
- Complete programme for the trade and industry, house and garden

## Couplings



### Male, BSPP

1068	Thread
5950NA3	1/2"



### Female, BSPP

1068	Thread
5952GA3	1/2"



### Hose Tail

1068	To Suit Hose ID
5949SA3	3/8"
5950SA3	1/2"
5951SA3	3/4"



### Hose Tail with Valve

1068	To Suit Hose ID
5953SA3	1/2"

## Plugs



### Male, BSPP

1068	Thread
59640A3	1/2"



### Female, BSPP

1068	Thread
5961GA3	1/2"



### Hose Tail

1068	To Suit Hose ID
59600A3	1/2"



### Double Hose Tail

1068	To Suit Hose ID
5960AA3	1/2" & 3/4"

# STAINLESS STEEL



## NiTO Original Stainless Steel Quick Release Couplings

stainless steel



### Coupler to Female, BSPP

1068	Thread	Coupling Size
54500A3	1/2"	1/2"
54520A3	3/4"	1/2"
64500A3	3/4"	3/4"

stainless steel



### Coupler to Hose Tail

1068	To Suit Hose ID	Coupling Size
5450SA3	1/2"	1/2"
6450SA3	3/4"	3/4"

stainless steel



### Valve Couplers to Female, BSPP

1068	To Suit Hose ID	Coupling Size
54530A3	3/4"	1/2" with Valve
64530A3	3/4"	3/4" with Valve

stainless steel



### Valve Couplers to Hose Tail

1068	To Suit Hose ID	Coupling Size
5453SA3	1/2"	1/2" with Stop Valve
6453SA3	3/4"	3/4" with Stop Valve

stainless steel



### Nipple Couplers to Female, BSPP

1068	Thread	Coupling Size
54610A3	1/2"	1/2"
5461AA3	3/4"	1/2"
64610A3	3/4"	3/4"

stainless steel



### Nipple Couplers to Male, BSPP

1068	Thread	Coupling Size
54611A3	1/2"	1/2"
64611A3	3/4"	3/4"

stainless steel



### Nipple Coupler to Double Hose Tail

1068	To Suit Hose ID	Coupling Size
5460AA3	1/2" & 3/4"	1/2"

stainless steel



### Nipple Couplers to Hose Tail

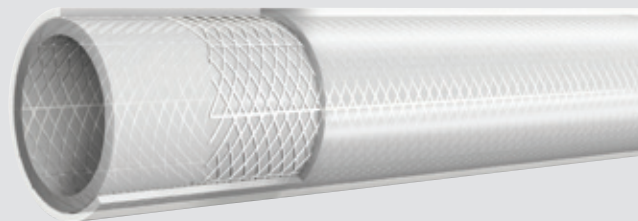
1068	To Suit Hose ID	Coupling Size
54600A3	1/2"	1/2"
64600A3	3/4"	3/4"

stainless steel



### Male to Hose Tail, BSPP

1068	Thread	To Suit Hose ID
64670A3	3/4"	3/4"



For **Food Certified Reinforced PVC Braided Hose**  
see page 1406