



techhose

QUALITY CONNECTIONS

Hydraulics

Pneumatics
& Vacuum

Industrial

Compressed Air
& Ring Main

Process &
Instrumentation

Fuelling, Lubrication, Wash Down & Misting

Oil Drain Plugs

QUICK, CLEAN AND SAFE OIL CHANGES



WHAT ARE THE ADVANTAGES OF THE FEMCO DRAINAGE SYSTEMS?

- The Femco oil drain plug reduces downtime
- You can drain oil at engine temperature, safely
- You can drain oil in an environmentally friendly way, because oil spillages are prevented
- Oil is contained from sump to container
- Eliminates the risk of stripped threads
- Tool-less oil changing; all you need is the drain hose

HOW DOES THE FEMCO OIL DRAIN PLUG WORK?

- 1) Remove the dust cover from the drain plug
- 2) Screw the Femco drain connector with hose onto the drainage system
- 3) The fluids are captured and flow straight to the container

WHICH OIL DRAIN PLUG SUITS MY APPLICATION THE BEST?

Femco produces a lot of oil drain plugs and they are all specialised for different applications.

- The Standard oil drain plug is installed when there is enough space available
- The Compact oil drain plug is used where space is restricted
- The Click Drain is used for a large number of vehicles
- The XL oil drain plug is used to drain a large amount of oil
- The Quick Drain is used for stationary machinery

WHERE CAN I FIND AN OIL DRAIN PLUG IN THE RIGHT SIZE?

Femco has a product range covering over 500 thread types and sizes. We can also make custom thread sizes. Please call us; we can help you to find the right size.

WHAT ARE THE DRAIN PLUGS MADE FROM?

All our oil drain plugs are made from solid brass.

CAN I USE A FEMCO OIL DRAIN PLUG IN COMBINATION WITH AN OIL EXTRACTOR PUMP?

All Femco oil drainage systems can be connected with an oil extractor pump.



CAN I PERFORM AN OIL CHANGE WHILE THE OIL IS STILL HOT?

All Femco oil drain plugs are produced from solid brass and can be used to drain oil at engine temperature.

IS IT POSSIBLE TO DRAIN FLUIDS OTHER THAN OIL?

The Femco oil drain plugs can be used to drain all kinds of fluid such as engine oil, coolant, gearbox oil and hydraulic oil.

WHAT HAPPENS IF I GET WATER IN MY FUEL TANK?

Femco drain plugs are ideal for draining condensation from fuel tanks.

HOW DO I PERFORM AN OIL CHECK?

Femco has produced various sampling nipples to make it easy to check the viscosity of the oil.

HOW CAN I CHANGE THE OIL IN A DIFFICULT-TO-REACH PLACE?

Femco can provide you with angled and extended drain connectors or special adaptors to drain oil even in the tightest spaces.

CAN A FEMCO OIL DRAIN PLUG BE FITTED WITH A MAGNET?

All Femco oil drain plugs can be provided with a magnet, which can be inspected after draining the oil.

WHO DOES FEMCO ALREADY SUPPLY?

Femco already supplies their drainage systems to companies like:

- | | | |
|-------------|-----------|------------------|
| • Emirates | • JCB | • Bell Equipment |
| • MANN | • VDL | • Alfagomma |
| • Hitachi | • Daimler | |
| • Air China | • Kobelco | |

QUICK OIL DRAIN PLUGS



Standard Drain Plugs

The Standard Drain – the original Femco® oil drain plug – was introduced in 1983 to change oil in a quick, clean and environmentally friendly way. The Standard Drain is manufactured out of 100% brass, which makes it easy to change hot oil. Additionally, the oil drain plugs are fitted with a dust cover and a double O-Ring, which protect the plug and ensure a reliable performance.

Application: Engine oil, hydraulic oil, gearbox oil, coolant, lubricating oil

Material: Brass outside and inside, stainless steel spring

Valve: Brass with Viton O-Ring/valve

Dust Cap: Brass, thread size LB: M26 x 1.5/SB: 22 x 1.5

Dust Cap Seal: NBR O-Ring

Body Seal: Viton O-Ring

Working Temperature:
-20°C to +200°C



NPT

0710	Thread
6060020141	1/4"
6060020142	3/8"
6060020143	1/2"
6060020140	3/4"
6060020145	1"

Tech Sheet 68080

UNF

0710	Thread
6080020109	1/2"-20
6080020113	3/4"-16
6080020115	7/8"-14
6080020119	7/8"-20
6080020120	1"-12

Tech Sheet 68080

Metric

0710	Thread
6090020030	M12 x 1.5
6090020033	M14 x 1.5
6090020036	M16 x 1.5
6090020038	M18 x 1.5
6090020040	M20 x 1.5
6090020046	M22 x 1.5
6090020053	M24 x 1.5

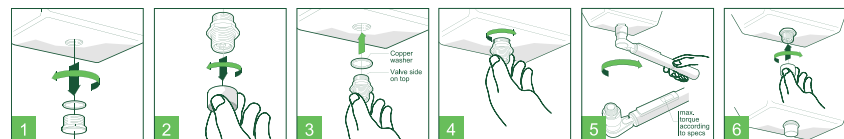
Tech Sheet 68080

BSPP

0710	Thread
6070020130	1/4"
6070020131	3/8"
6070020132	1/2"
6070020134	3/4"
6070020141	1"

Tech Sheet 68080

Installing FEMCO® Drain Plugs (Standard and Compact)



Standard Drain Accessories



Straight Drainer, with Hose

0710	Thread	To Suit Hose ID mm	Length mm
650103	M26 x 1.5	18	250

Tech Sheet 68080



90° Drainer, with Hose

0710	Thread	To Suit Hose ID mm	Length mm
650108	M26 x 1.5	18	250

Tech Sheet 68080



Dust Cap & Chain

0710	Thread
650113	M26 x 1.5

Tech Sheet 68080



45° Drainer, with Hose

0710	Thread	To Suit Hose ID mm	Length mm
650121	M26 x 1.5	18	250

Tech Sheet 68080



For Hydraulic Oils
...see page 283

QUICK OIL DRAIN PLUGS



Compact Drain Plugs

The Compact Drain is the smallest Femco® oil drain plug, and is the perfect choice for oil changes in tight spaces. The Compact plug only extends 12 millimetres from the sump, and is often used in vehicles with a low ground clearance such as cars, buses and motorcycles. You can install the compact plug on any vehicle without worrying about the available space.

Application: Engine oil, hydraulic oil, gearbox oil, coolant, lubricating oil

Material: Brass outside and inside, stainless steel spring

Valve: Brass with Viton O-Ring/valve

Dust Cap: Brass, thread size LB: M24 x 1,5/SB: 20 x 1.5

Dust Cap Seal: NBR O-Ring

Body Seal: Viton O-Ring

Working Temperature:
-20°C to +200°C



NPT

0710	Thread
7060020406	1/4"
7060020407	3/8"
7060020408	1/2"
7090020411	3/4"
7060020413	1"

Tech Sheet 68080

UNF

0710	Thread
7080020354	1/2"-20
7080020360	7/8"-14
7080020363	7/8"-18
7080020378	11/8"-12
7080020372	5/16"-12

Tech Sheet 68080

Metric

0710	Thread
7090020178	M12 x 1.5
7090020181	M14 x 1.5
7090020184	M16 x 1.5
7090020186	M18 x 1.5
7090020189	M20 x 1.5
7090020195	M22 x 1.5
7090020203	M24 x 1.5

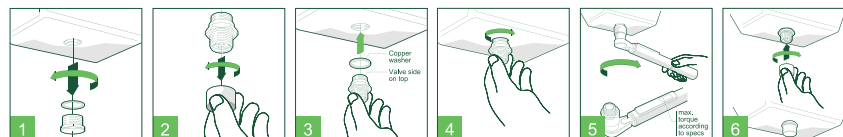
Tech Sheet 68080

BSPP

0710	Thread
7070020395	1/4"
7070020397	3/8"
7070020398	1/2"
7070020399	3/4"
7070020401	1"

Tech Sheet 68080

Installing FEMCO® Drain Plugs (Standard and Compact)



Compact Drain Accessories



Straight Drainer, with Hose

0710	Thread	To Suit Hose ID mm	Length mm
750005	M24 x 1.5	18	250

Tech Sheet 68080



45° Drainer, with Hose

0710	Thread	To Suit Hose ID mm	Length mm
750013	M24 x 1.5	18	250

Tech Sheet 68080



90° Drainer, with Hose

0710	Thread	To Suit Hose ID mm	Length mm
750010	M24 x 1.5	18	250

Tech Sheet 68080



Dust Cap

0710	Thread
750028	M24 x 1.5

Tech Sheet 68080

QUICK OIL DRAIN PLUGS



Click Drain Plugs

The Click Drain enables you to perform quick, clean and environmentally friendly oil changes. The Click Drain is manufactured out of solid brass. This material is heat resistant, ensuring you can safely change hot fluids such as engine oil. You can use the oil drain valve without using any specialist tools. In addition to this, it is easy to take oil samples using the Click Drain. The Click Drain oil drain valve also incorporates a locking system to ensure an effective seal, creating a clean working environment.

Click Drain plugs make oil changes on your vehicles and machines quick and easy. This oil drain system consists of a plug and a clicker. When it is time for an oil change, you simply click the clicker onto the plug to start draining the oil. The Click Drain plug is often used in combination with the Femco® oil extractor pump, and is the ideal solution for small maintenance tasks on fleets of vehicles

Applications: engine oil, hydraulic oil, gearbox oil, coolant, lubricating oil

Material: brass outside and inside, stainless steel spring

Valve: Brass with viton O-Ring/valve

Dust Cap: brass, thread size LB: M26 x 1.5/SB: 22 x 1.5

Dust Cap Seal: NBR O-Ring

Body Seal: Viton O-Ring

Advantages of the Quick Drain oil drain valve:

- Reduction of downtime
- Easy operation
- Clean oil changes
- Change hot oil safely
- No tools required
- Easy way to sample oil



Working Temperature:
-20°C to +200°C

NPT

0710	Thread
8060020511	1/4"
8060020512	3/8"
8060020513	1/2"
8060020514	3/4"
8060020516	1"
Tech Sheet 68080	

BSPP

0710	Thread
8080020501	3/8"
8080020502	1/2"
8080020504	3/4"
8080020505	3/4" (Extended thread length)
8080020506	1"
Tech Sheet 68080	

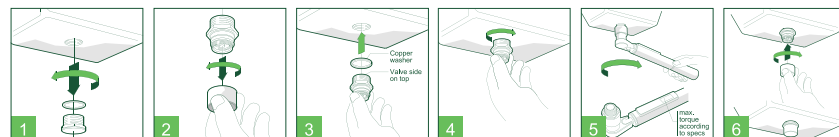
UNF

0710	Thread
8080020482	3/4"-16
8080020483	7/8"-14
8080020486	7/8"-18
8080020487	7/8"-20
8080020489	1"-14
8080020492	1.1/2"-12
Tech Sheet 68080	

Metric

0710	Thread
8090020420	M12 x 1.5
8090020423	M14 x 1.5
8090020425	M16 x 1.25
8090020428	M18 x 1.5
8090020430	M20 x 1.5
8090020436	M22 x 1.5
8090020443	M24 x 1.5
Tech Sheet 68080	

Installing FEMCO® Drain Plugs (Click Drain)



Click Drain Accessories



Drain Connector, Solo Click, BSPP

0710	Thread
851000	1/2"
Tech Sheet 68080	



Drain Connectors, Double Click, BSPP

0710	Thread
851017	1/2"
851013	3/4"
851019	1"
Tech Sheet 68080	