



# techhose

QUALITY CONNECTIONS

Hydraulics

Pneumatics  
& Vacuum

Industrial

Compressed Air  
& Ring Main

Process &  
Instrumentation

## Compressors & Air Tools

**1** Hydraulics **3-284**

**2** Hydraulic Quick Release Couplings **285-320**

**3** Pneumatic Quick Release Couplings **321-406**

**4** Monitor & Test **407-446**

**5** Pneumatic & Vacuum **447-762**

**6** Push-in Fittings & Tubing **763-918**

**7** Valves & Actuation **919-1060**

**8** Ring Main **1061-1136**

**9** Hose Tails, Adaptors, Fittings & Manifolds **1137-1224**

**10** Stainless Steel **1225-1332**

**11** Malleable Iron **1333-1398**

**12** Hose, Couplings, Ducting & Hose Reels **1399-1510**

**13** Clips & Clamps **1511-1558**

**14** Paint, Sprays & Adhesives **1559-1590**

**15** Blow Guns, Vacuum & Nozzles **1591-1616**

**16** Fuelling, Lubrication, Wash Down & Misting **1617-1696**

**17** Compressors & Air Tools **1697-1726**

**18** Hand Tools & PPE **1727-1765**

# SECTION 17

## Compressors & Air Tools

---

**17.01** Compressors **1697-1703**

---

**17.02** Air Tools & Accessories **1704-1720**

---

**17.03** Tyre Inflation Equipmen **1721-1726**

---

# SECTION 17

# Compressors & Air Tools

## 17.01 Compressors

- Compressors

**NUAIR**

**Fini**

**BAMBI**

1697-1703



## 17.02 Air Tools & Accessories

- Pneumatic Power Tools
- Pneumatic Spraying Equipment & Accessories
- Spray Guns
- Paint Spray Guns
- Air Tools
- Multi-swivel Air Couplings
- Pneumatic Power Tools & Accessories

**FT PRO**

**AEROPRO**

**PCL**

1704-1720



## 17.03 Tyre Inflation Equipmen

- Professional Tyre Inflato
- Tyre Inflation Equipmen

**FT PRO**

**JAMEC PEM**  
COUPLE UP WITH THE RIGHT CONNECTION

**VWV Air Boy**

1721-1726



# COMPRESSORS



## Portable Direct Drive Oil Free - Traditional Series 1.1 to 1.5 kW



**SO1/6 HP 1.5 VENTO Piston Compressor**

0610	kW/HP	CFM	Bar/PSI
S-A6BB304FPS534	1.1/1.5	6.7	8/115

Tech Sheet 71795



**VENTO OM200/6 SILENCED Piston Compressor**

0610	kW/HP	CFM	Bar/PSI
S-A2BB104NUA	1.1/1.5	4.1	8/116

Tech Sheet 71795



**ROLL CAGE OM 195/6 Piston Compressor**

0610	kW/HP	CFM	Bar/PSI
S-8213885FPS505	1.1/1.5	7.1	8/116

Tech Sheet 71795



**SO2/24 & 50CM2 Piston Compressor**

0610	kW/HP	CFM	Bar/PSI	Capacity Litres
S-A3CC404FPS501	1.5/2	8.1	8/116	24
S-A3DV404FPS536	1.5/2	8.1	8/116	50

Tech Sheet 71795

## Portable Direct Drive Oil Free - 110 Volt Series 1.1 kW



**ROLL CAGE OM195/6 - 110 V Piston Compressor**

0610	kW/HP	CFM	Bar/PSI
S-8213885FPS566	1.1/1.5	7.1	8/116

Tech Sheet 71795



**OM197/24 TECH - 110V Piston Compressor**

0610	kW/HP	CFM	Bar/PSI
S-A8CA3C4FPS567	1.1/1.5	7.1	8/116

Tech Sheet 71795

## Portable Direct Drive Lubricated - Tech Series 1.5 to 1.8 kW



**F1-241/24 TECH Piston Compressor**

0610	kW/HP	CFM	Bar/PSI
S-6SCA404FPS506	1.5/2	8.5	10/145

Tech Sheet 71795



**F1-260/50 TECH Piston Compressor**

0610	kW/HP	CFM	Bar/PSI
S-75DA4G4FPS507	1.8/2.5	9.2	10/145

Tech Sheet 71795

## Portable Direct Drive Lubricated - Traditional Series 1.1 to 2.2 kW



**ND2/24 & 50CM2 Piston Compressor**

0610	kW/HP	CFM	Bar/PSI	Capacity Litres
S-FCCC404FPS502	1.5/2	7.4	8/116	24
S-FCDC404FPS503	1.5/2	7.4	8/116	50

Tech Sheet 71795



**NDV/50CM3 Piston Compressor**

0610	kW/HP	CFM	Bar/PSI
S-SXDL504FPS504	2.2/3	12.6	8/116

Tech Sheet 71795

## Portable Belt Driven Lubricated - Tech Series 1.5 to 2.2 kW



**NB2800B/50/2M TECH Piston Compressor**

0610	kW/HP	CFM	Bar/PSI
S-28DA404FPS008	1.5/2	9	10/145

Tech Sheet 71795



**N2800B/50/2M TECH 110 Volt Piston Compressor**

0610	kW/HP	CFM	Bar/PSI
S-28DA4C4FPS060	1.5/2	9	10/145

Tech Sheet 71795

# COMPRESSORS

## Portable Belt Driven Lubricated - Tech Series 1.5 to 2.2 kW



**NB2800B/50/3M TECH  
Piston Compressor**

0610	kW/HP	CFM	Bar/PSI
S-28DA504FPS032	2.2/3	12.5	10/145

Tech Sheet 71795



**NB2800B/100/3M TECH  
Piston Compressor**

0610	kW/HP	CFM	Bar/PSI
S-28FA504FPS009	2.2/3	12.5	10/145

Tech Sheet 71795



**N2800B/150/3M TECH  
Piston Compressor**

0610	kW/HP	CFM	Bar/PSI
S-28HA504FPS051	2.2/3	12.5	10/145

Tech Sheet 71795

**FT PRO**



For FRL's  
see page 637

## Belt Driven Lubricated - Blue Star Series 1.5 to 7.5 kW



**NB28C/50 FM2 230 Volt Piston Compressor**

0610	kW/HP	CFM	Bar/PSI
S-28DC404FPS039	1.5/2	9	10/145

Tech Sheet 71795



**NB28C/100 FM3 230 Volt Piston Compressor**

0610	kW/HP	CFM	Bar/PSI
S-28FN504FPS040	2.2/3	12.5	10/145

Tech Sheet 71795



**NB38C/150 & 200 FM3 230 Volt  
Piston Compressors**

0610	kW/HP	CFM	Bar/PSI	Capacity Litres
S-36HN504FPS012	2.2/3	13.95	10/145	150
S-36LN504FPS014	2.2/3	13.95	10/145	200
S-36LN684FPS075	3/4	18	10/145	200

Tech Sheet 71795



**NB38C/150 & 200 FT3 400 Volt  
Piston Compressors**

0610	kW/HP	CFM	Bar/PSI	Capacity Litres
S-36HN541FPS013	2.2/3	13.95	10/145	150
S-36LN541FPS015	2.2/3	13.95	10/145	200

Tech Sheet 71795



**NB38/270 TDT Tandem 400 Volt  
Piston Compressor**

0610	kW/HP	CFM	Bar/PSI
S-36NW541FPS037	2 x 2.2/3	27.9	10/145

Tech Sheet 71795



**NB7/200 FT 5 400 Volt Piston Compressor**

0610	kW/HP	CFM	Bar/PSI
S-N7LN701FPS044	4/5.5	24	10/145

Tech Sheet 71795



**NB7/270 FT 7 400 Volt Piston Compressor**

0610	kW/HP	CFM	Bar/PSI
S-N7NN801FPS018	5.5/7.5	29.7	10/145

Tech Sheet 71795



**NB10/270 FT 10 400 Volt Piston Compressor**

0610	kW/HP	CFM	Bar/PSI
S-N1NN905FPS019	7.5/10	38.1	10/145

Tech Sheet 71795



**NB38/270 TD Tandem 230 Volt  
Piston Compressor**

0610	kW/HP	CFM	Bar/PSI
S-36NW505FPS038	2 x 2.2/3	27.9	10/145

Tech Sheet 71795

# COMPRESSORS



## Belt Driven Vertical Series



### Vertical Series Piston Compressors

0610	Voltage	kW/HP	CFM	Bar/PSI	Capacity Litres
S-36HY504FPS068	230V	2.2 / 3	13.95	10 / 145	150
S-36HY541FPS069	400V	2.2 / 3	13.95	10 / 145	150
S-36HY684FPS074	230V	3/4	18	10 / 145	150
S-N5NY701FPS070	400V	4 / 5.5	22.9	11 / 160	270

Tech Sheet 71795

## Direct Drive Silent Compressors



### ROLLCAGE 6L OL244 Silenced Compressor 230 Volt

0610	kW/HP	CFM	Bar/PSI	Capacity Litres	dB(A)
S-B4BA304FPS571	1.1 / 1.5	7.1	8 / 116	6	60

Tech Sheet 71795



### PIONEER 10L OL244 Silenced Compressor 230 Volt

0610	kW/HP	CFM	Bar/PSI	Capacity Litres	dB(A)
S-B4PP304FPS573	1.1 / 1.5	7.1	8 / 116	10	62

Tech Sheet 71795



### OL244/24 TECH SE Silenced Compressor 230 Volt

0610	kW/HP	CFM	Bar/PSI	Capacity Litres	dB(A)
S-B4CA304FPS572	1.1 / 1.5	7.1	8 / 116	24	62

Tech Sheet 71795

## Belt Driven Lubricated Low Noise Series 1.5 to 7.5 kW



### Low Noise Portable Fully Enclosed Piston Compressors

0610	Voltage	kW/HP	CFM	Bar/PSI	Capacity Litres
S-28FR404FPS078	230V	1.5 / 2	9	10 / 145	100
S-28FR504FPS079	230V	2.2 / 3	11.6	10 / 145	100
S-28FR541FPS080	400V	2.2 / 3	11.6	10 / 145	100

Tech Sheet 71795



### Low Noise Portable Piston Compressors

0610	Voltage	kW/HP	CFM	Bar/PSI	Capacity Litres
S-36FR504FPS076	230V	2.2 / 3	11.6	10 / 145	100
S-36FR541FPS077	400V	2.2 / 3	11.6	10 / 145	100

Tech Sheet 71795



### Low Noise Receiver Mounted Piston Compressors

0610	Voltage	kW/HP	CFM	Bar/PSI	Capacity Litres
S-N5NT701FPS083	400V	4 / 5.5	22.6	11 / 160	270
S-N7NT801FPS084	400V	5.5 / 7.5	29.7	11 / 160	270
S-N1TT905FPS086	400V	7.5 / 10	43.4	11 / 160	500

Tech Sheet 71795



### Low Noise Free Standing Piston Compressors

0610	Voltage	kW/HP	CFM	Bar/PSI
S-N5AT701FPS081	400V	4 / 5.5	22.6	11 / 160
S-N7AT801FPS082	400V	5.5 / 7.5	29.7	11 / 160
S-N1AT905FPS085	400V	7.5 / 10	43.4	11 / 160

Tech Sheet 71795

# COMPRESSORS



## MICRO Fixed Speed Flexonic Belt Driven Screw Compressors 2.2 to 5.5 kW



### MICRO Series Receiver Mounted Screw Compressors

0620	Volt	kW/HP	CFM	Bar/PSI
F-V77JT60FNM501	230	2.2/3	10.2	10/145
F-V77JS72FNM701	400	3/4	15.2	8/116
F-V77JQ72FNM701	400	3/4	13.6	10
F-V77JR72FNM701	400	4/5.5	20.5	8/116
F-V77JP72FNM701	400	4/5.5	17.1	10/145
F-V91JW92FNM701	400	5.5/7.5	25.4	8/116
F-V91JO92FNM701	400	5.5/7.5	22.9	10/145

Tech Sheet 71794



### MICRO Series Receiver Mounted c/w Dryer - Screw Compressors

0620	Volt	kW/HP	CFM	Bar/PSI
F-V77JT60FNM801	230	2.2/3	10.2	10/145
F-V77JS72FNM801	400	3/4	15.2	8/116
F-V77JQ72FNM801	400	3/4	13.6	10/145
F-V77JR72FNM801	400	4/5.5	20.5	8/116
F-V77JP72FNM801	400	4/5.5	17.1	10/145
F-V91JW92FNM801	400	5.5/7.5	25.4	8/116
F-V91JO92FNM801	400	5.5/7.5	22.9	10/145

Tech Sheet 71794

## FINI PLUS Fixed Speed Flexonic Belt Driven Screw Compressors 7.5 to 15 kW



### FINI PLUS Series Receiver Mounted Screw Compressors

0620	Capacity Litres	kW/HP	CFM	Bar/PSI
F-V91NG92FNM701	270	7.5/10	44.1	8/116
F-V91NH92FNM701	270	7.5/10	35.3	10/145
F-V91NL92FNM701	270	11/15	58.2	8/116
F-V91NM92FNM701	270	11/15	53	10/145
F-V83NP92FNM701	500	15/20	75.9	8/116
F-V83NQ92FNM701	500	15/20	65.3	10/145

Tech Sheet 71794



### FINI PLUS Series Receiver Mounted c/w Dryer - Screw Compressors

0620	Capacity Litres	kW/HP	CFM	Bar/PSI
F-V91NG92FNM801	270	7.5/10	44.1	8/116
F-V91NH92FNM801	270	7.5/10	35.3	10/145
F-V91NL92FNM801	270	11/15	58.2	8/116
F-V91NM92FNM801	270	11/15	53	10/145
F-V83NP92FNM801	500	15/20	83	8/116
F-V83NQ92FNM801	500	15/20	72.4	10/145

Tech Sheet 71794

**FT PRO**

For Long Life  
Compressor Oil  
...see page 434



# COMPRESSORS



# IBMBI

## Bambi Compressors



**Silent Air Compressor, 9 Litre Tank**

0630	Litres per Minute	Pressure Bar	Voltage
<b>BB8</b>	50	8	240/50

Tech Sheet 71793



**Silent Air Compressor, 24 Litre Tank**

0630	Litres per Minute	Pressure Bar	Voltage
<b>BB24</b>	50	8	240/50

Tech Sheet 71793



**Silent Air Compressor, 15 Litre Tank**

0630	Litres per Minute	Pressure Bar	Voltage
<b>BB15</b>	50	8	240/50

Tech Sheet 71793



**Silent Air Compressor, 50 Litre Tank**

0630	Litres per Minute	Pressure Bar	Voltage
<b>BB50D</b>	100	8	240/50

Tech Sheet 71793

**FT PRO**



For **Automatic Drain Valves**  
...see pages 1024-1025



**Silent Air Wheel Kit (BB24 & BB50)**

0630	Description
<b>BPB0157</b>	Wheel Kit suits BB24 & BB50D

Tech Sheet 71793



# AEROPRO

ENGINEERED FOR PROFESSIONALS

## FEATURES & BENEFITS

**Design:** attractive, lightweight and comfortable composite grip handle.

**Quality:** designed with superior technology, manufactured with precision and high quality to deliver more power and a longer life.

**Robust:** heat treated components for increased durability, fully hardened planetary gears and reduced friction for extended tool productivity.

**Warranty:** 12 months manufacturer's warranty.

[www.aeropro-eu.com](http://www.aeropro-eu.com)



# PNEUMATIC POWER TOOLS



## **SAFETY TIPS:**

**A few tips to increase safety awareness and help avoid accident and injury in the workplace.**

(These are not a substitute to the AEROPRO safety/instruction manuals.)

## **VISUAL INSPECTION PRIOR TO USE**

Conduct a visual check of the tool, including hoses and fittings for signs of damage/excess wear or defect parts. Ensure tool is fully oiled.

## **USE THE CORRECT ACCESSORIES**

Always use recommended accessories with **AEROPRO** tools, e.g. never use hand sockets with impact wrenches. Always disconnect air supply prior to changing an accessory.

## **SAFETY WEAR**

Always adhere to workplace safety workwear regulations. In addition when operating equipment always wear goggles and ear plugs as well as gloves, apron, helmet and dust mask when required. When working with materials that may produce harmful airborne particles, use other equipment such as dust extractors to control exposure.

## **MAINTAIN A SAFE WORKING AREA**

Make other people aware of your working area and ensure they are kept at a safe distance. Manage your floor space keeping it free of trip hazards, trailing hoses, etc. Direct exhaust gases away from yourself and others, do not use in explosive atmospheres and always keep away from electrical wiring.

### **Pneumatic Power Tool Accessories**



# PNEUMATIC POWER TOOLS

**AEROPRO**  
ENGINEERED FOR PROFESSIONALS

## Ratchet Wrenches

- Designed with superior technology and manufactured with precision and high quality to deliver more power and a longer life
- Ball bearing mounted air motor produces enough power for most requirements
- Fully hardened planetary gears reduce friction for extended tool productivity
- Comfortable composite grip handle
- Ball socket retainer provides fast and easy socket replacement
- Heat treated components for increased durability
- Lightweight aluminium body
- Compact head design allows flexibility in tight areas
- Forward/reverse lever located behind the ratchet head for quick change of direction
- Side exhaust
- Recommended air pressure: 90 PSI



Model No.	Square Drive	Capacity Bolt Size		Free Speed RPM	Working Torque		Overall Length		Air Inlet	Air Hose (ID)	Average Air Consumption		Net Weight	
		Imp	Met mm		Ft-Lb	N.m	In	mm			cfm	l/min	Lbs	Kgs
AP17411	3/8"	1/2	13	160	50	68	10.8	275	1/4"	3/8"	3	85.5	2.5	1.15

### 3/8" Square Drive

0373

AP17411-3/8

Tech Sheet 10236



Model No.	Square Drive	Capacity Bolt Size		Free Speed RPM	Working Torque		Overall Length		Air Inlet	Air Hose (ID)	Average Air Consumption		Net Weight	
		Imp	Met mm		Ft-Lb	N.m	In	mm			cfm	l/min	Lbs	Kgs
AP17411	1/2"	1/2"	13	160	50	68	10	254	1/4"	3/8"	2.7	77	2.4	1.1

### 1/2" Square Drive

0373

AP17411-1/2

Tech Sheet 10236

## Air Impact Wrenches

- Twin hammer mechanism has two identical hammers that deliver an instantaneous balanced blow, reducing vibration and transferring more torque to the drive than any other mechanism on the market
- Provides more power and smooth balanced blows
- Screened filter air inlet keeps dirt and debris from damaging the tool
- Rear exhaust
- Recommended air pressure: 90 PSI



Model No.	Square Drive	Capacity Bolt Size		Free Speed RPM	Working Torque		Overall Length		Air Inlet	Air Hose (ID)	Average Air Consumption		Net Weight	
		Imp	Met mm		Ft-Lb	N.m	In	mm			cfm	l/min	Lbs	Kgs
AP7451	1/2"	5/8"	16	7,500	450	610	7.48	190	1/4"	3/8"	6.5	183.9	4.2	1.9

### 1/2" Square Drive

0373

AP7451

Tech Sheet 10235

Colour may vary.



Model No.	Square Drive	Capacity Bolt Size		Free Speed RPM	Working Torque		Overall Length		Air Inlet	Air Hose (ID)	Average Air Consumption		Net Weight	
		Imp	Met mm		Ft-Lb	N.m	In	mm			cfm	l/min	Lbs	Kgs
AP7460	3/4"	1"	25	7000	1000	1355	8.2	208	3/8"	1/2"	9.5	269	6.6	3.0

### 3/4" Square Drive

0373

AP7460

Tech Sheet 10237

## Air Impact Wrench Kit

- Twin hammer mechanism has two identical hammers that deliver an instantaneous balanced blow, reducing vibration and transferring more torque to the drive than any other mechanism on the market
- Provides more power and smooth balanced blows
- Screened filter air inlet keeps dirt and debris from damaging the tool
- Rear exhaust
- Recommended air pressure: 90 PSI

### Contents:

- 1 x AP17407 1/2" impact wrench
- 10 x impact sockets (9, 10, 11, 13, 14, 17, 19, 22, 24, 27mm)
- 1 x 5" extension bar
- 1 x oil pot
- 1 x hex wrench
- 1 x mini oiler
- 1 x nipple
- 1 x blow moulded case



Model No.	Square Drive	Capacity Bolt Size		Free Speed RPM	Working Torque		Overall Length		Air Inlet	Air Hose (ID)	Average Air Consumption		Net Weight	
		Imp	Met mm		Ft-Lb	N.m	In	mm			cfm	l/min	Lbs	Kgs
AP17407	1/2"	5/8"	16	7,500	450	610	7.30	187.4	1/4"	3/8"	6.5	183.5	4.9	2.26

### 1/2" Square Drive, 17 Piece Kit

0373

AP17808

Tech Sheet 10238

## Air Impact Wrench

- Ergonomic design handle, central gravity for steady control
- Alloy steel strike structure, strong, anti-fatigue, long life and excellent torque/weight ratios
- 45° air inlet design to decrease hose twisting
- Extended drive shaft for easy accessibility to concave restricted access
- Four speed forward and reverse setting



Model No.	Square Drive	Capacity Bolt Size		Free Speed RPM	Working Torque		Overall Length		Air Inlet	Air Hose (ID)	Average Air Consumption		Net Weight		Suggested Air Comp
		Imp	Met mm		Ft-Lb	N.m	Imp	Met mm			cfm	l/min	Lbs	Kgs	
AP7495	1"	2"	50	2800	2500	3480	25.4	644	1/2"	5/8"	43	1225	41.6	18.9	5 HP

### 1" Square Drive

0373

AP7495

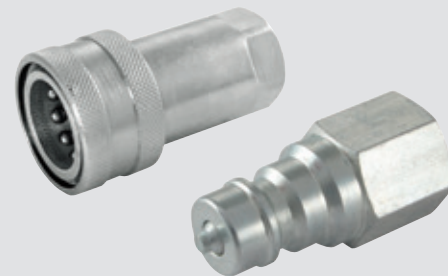
Tech Sheet 20217

**FT PRO**



You might also need  
**Air Hose** see page 1410

**FT PRO**



You might also need  
**QRC** see page 290

# PNEUMATIC POWER TOOLS

**AEROPRO**  
ENGINEERED FOR PROFESSIONALS

## Straight Grip Drill

- For applications where a compact and low profile tool is require
- Precision machined gearing ensures maximum power transfer and durability
- Lightweight – helps prevent fatigue during prolonged use
- Ideal for confined space
- Recommended air pressure: 90 PSI



Model No.	Chuck Size	Free Speed RPM	Air Inlet	Air Hose (ID)	Overall Length		Average Air Consumption		Net Weight	
					In	mm	cfm	l/min	Lbs	Kgs
AP17111	3/8"	2,600	1/4"	3/8"	8.8	225	4.0	115	1.87	0.85

### 3/8" Keyed Chuck

0373

AP17111

Tech Sheet 10239

## Pistol Grip Reversible Drill

- Suited to compact low profile applications
- Variable speed throttle for easy starts
- Precision machined gearing ensures maximum power transfer and durability
- Convenient one hand push button (forward/reverse)
- Lightweight – helps avoid fatigue during prolonged use
- Quiet operation with rear exhaust directs air away from workplace
- Ball bearing construction
- Recommended air pressure: 90 PSI



Model No.	Chuck Size	Free Speed RPM	Air Inlet	Air Hose (ID)	Overall Length		Average Air Consumption		Net Weight	
					In	mm	cfm	l/min	Lbs	Kgs
AP17101	3/8"	1,800	1/4"	3/8"	7	180	3.7	104	1.98	0.9

### 3/8" Keyed Chuck

0373

AP17101

Tech Sheet 10240



Model No.	Chuck Size	Free Speed RPM	Air Inlet	Air Hose (ID)	Overall Length		Average Air Consumption		Net Weight	
					In	mm	cfm	l/min	Lbs	Kgs
AP17107	1/2"	700	1/4"	3/8"	7.68	195	4	115	1.18	1.19

### 1/2" Keyed Chuck

0373

AP17107

Tech Sheet 10241

## Air Impact Hammer

- Ergonomic grip for comfort and stability
- Heat treated impact parts for enhanced durability
- Positive action trigger and built-in air regulator for simple power and speed control
- Screened filter air inlet to keep dirt and debris from damaging the tool
- Standard quick change spring for speed and ease of chisel change
- Front exhaust
- Recommended air pressure: 90 PSI
- 4 piece chisel set included



Model No.	Chisel Shank mm	Blows per min	Air Inlet	Air Hose (ID)	Overall Length		Average Air Consumption		Net Weight	
					In	mm	cfm	l/min	Lbs	Kgs
AP17621	10.2	4,500	1/4"	3/8"	6.10	155	2.8	79.8	2.65	1.2

### Heavy-duty

0373

AP17621

Tech Sheet 10242

## 2 in 1 Air Nailer & Stapler

- Strong and lightweight aluminium die-casting gun body
- Multidirectional exhaust port directs air away from the operator and work surface
- Hardened one piece drive blade for professional application
- Teflon O-ring to protect the piston from wearing
- Tool free depth-of-drive adjustment for exact setting of nail head
- Adjustable knob for either sequential or contact firin
- Designed for Ga18 style nails and staples up to 50mm in length
- Includes nailer, wrenches, oil, operating manual and rugged carrying case



Model No.	Dimensions (mm)	Required Pressure		Max Pressure		Nail Capacity	Weight	
		PSI	Bar	PSI	Bar		lbs	kgs
APSF5040RC	283x256x60	70-110	4.8-7.5	120	8.3	100 Pcs	3.52	1.6

0373

APSF5040RC

Tech Sheet 20219

**PORTWEST**



For Eye Glasses  
see page 1754

## Die Grinder

- Lightweight aluminium body
- Safety lever prevents accidental starts
- Rear exhaust
- Can be used with all types of accessories for porting, weld breaking and smoothing sharp edges, as well as deburring, polishing and grinding
- Recommended air pressure: 90 PSI



Model No.	Grinder Cap	Free Speed RPM	Air Inlet	Air Hose (ID)	Average Air Consumption		Net Weight	
					cfm	l/min	Lbs	Kgs
AP17313	1/4"	20,000	1/4"	3/8"	3	86.25	0.70	0.32

## Straight, 1/4"

0373

AP17313

Tech Sheet 10243

- Angle head provides easy access into confined space
- Lightweight aluminium body
- Safety lever prevents accidental starts
- Rear exhaust
- Can be used with accessories for porting, weld breaking and smoothing sharp edges, as well as deburring, polishing and grinding
- Recommended air pressure: 90 PSI



Model No.	Grinder Cap	Free Speed RPM	Air Inlet	Air Hose (ID)	Average Air Consumption		Net Weight	
					cfm	l/min	Lbs	Kgs
AP17315	1/4"	20,000	1/4"	3/8"	2.2	62	0.99	0.45

## Angled, 1/4"

0373

AP17315

Tech Sheet 10244

## Angle Die Grinder Kit

- Angled head provides easy access into confined space
- Lightweight aluminium body
- Safety lever prevents accidental starts
- Rear exhaust
- Can be used with all types of accessories for porting, weld breaking and smoothing sharp edges as well as deburring, polishing and grinding
- Recommended air pressure: 90 PSI

### Kit contains:

- |                                 |               |
|---------------------------------|---------------|
| 1 x angle die grinder (AP17315) | 1 x nipple    |
| 2 x hand wrenches               | 1 x collet    |
| 10 x grinding stones            | 1 x blow case |



Model No.	Grinder Cap	Free Speed RPM	Air Inlet	Air Hose (ID)	Average Air Consumption		Net Weight	
					cfm	l/min	Lbs	Kgs
AP17315	1/4"	20,000	1/4"	3/8"	2.2	62	0.99	0.45

## 16 Piece Kit

0373

AP17803-A

Tech Sheet 20220

## 4" Angle Grinder

- Built-in regulator to control speed
- Planetary gearing balances load on bearings and gears for greater power
- Side exhaust
- Recommended air pressure: 90 PSI



Model No.	Sanding Pad		Free Speed RPM	Air Inlet	Air Hose (ID)	Average Air Consumption		Net Weight	
	In	mm				cfm	l/min	Lbs	Kgs
AP7319	4"	100	10,000	1/4"	3/8"	5	140	2.86	1.3

## Heavy-duty

0373

AP7319

Tech Sheet 10245

## Basic Air Tool Kit

### Kit contains:

- Paint spray gun
- Blow gun
- Tyre inflation gun
- Wash gun
- 5mm recoil air hose



## 5 Piece Set

0373

AP8031K5G

Tech Sheet 20753

**PORTWEST**



For Impact Gloves  
see page 1758

# PNEUMATIC POWER TOOLS

**AEROPRO**  
ENGINEERED FOR PROFESSIONALS

## 1/2" Impact Socket Set

- Contains hexagon sizes: 3/8", 7/16", 1/2", 9/16", 5/8", 11/16", 3/4", 13/16", 7/8", 15/16" and 1"
- Hardened steel for robust use
- Steel case for safe storage



## Imperial, 11 Piece Set

0373  
AP7007

## 7" Chisel Kit

### Kit contains:

- Flat chisel
- Tapered punch chisel
- V chisel
- Claw chisel



## 4 Piece Kit, suitable for AP17621

0373  
AP7002-7

## Replacement Keyless Chuck



## 3/8" & 1/2"

0373	To Suit
APKLC38	3/8"
APKLC12	1/2"

## Chisel Spring Retainer

To suit AP17621.



## Replacement Spring

0373  
AP7001

## Airline Oil

High quality mineral oil with excellent lubricating properties for machine and power tools.

Due to restrictions imposed by the Transport of Dangerous Goods Act, this product is available for delivery to **MAINLAND UK ONLY**.

For further information please contact our customer service department.



## Airline Lubricant

0088	Litres
2020-6009	5

Tech Sheet 1224

## Universal Tool Oil



0088	Volume Millilitres
H0076	100
H0077	220

## Industrial Airless Paint Sprayer

- PC control system can show the working condition of the machine clearly
- Ergonomic design makes it easy to transport
- Long performance motor designed for industrial use

### Includes:

- 1 x AP818C (airless spray gun)
- 1 x AP8648-15M (15m high pressure paint spraying hose assembly)



Model No.	Voltage	Motor Size	Max Pressure	Standard Nozzle	Discharge Connection	Flow rate L/min	Nett Weight Kg
AP488	220V/50Hz	1.2HP	230 bar	0.017"	1/4"	2.1	16.5

### Brushless Motor

0373	Tech Sheet 20222						
AP488							

## Airless Spray Gun

- In-handle paint filter reduces tip clogs and improves finish
- Well balanced and lightweight
- Full trigger (four-finger) locks open for flushing and cleanin
- Ergonomic design and easy trigger pivot to reduce operator fatigue



Model No.	Nozzle Size (AP517)		Pattern Width mm	Paint Capacity mm	Type of Feed	Working Pressure (bar)	Paint Inlet Connection	
	Fan Width	Orifice Size					In	Npsm
AP818C	0.017	0.517	254-305	300	Pressure	248	1/4"	18

### Four-finger Trigger

0373	Tech Sheet 20223	
AP818C		

Interchangeable with Titan Graco sprayer.



### Airless Spray Gun Switch Tips

0373	Orifice mm	Fan Width
AP313	0.33	152-203
AP415	0.38	203-254
AP515	0.38	254-305

Tech Sheet 20224



### Extension Nozzles

0373	Length mm
AP8641-1	450
AP8641-4	1000

**PORTWEST**



For Engineers Gloves  
see page 1760



# PNEUMATIC SPRAYING EQUIPMENT & ACCESSORIES

**AEROPRO**  
ENGINEERED FOR PROFESSIONALS

## Air Powered Diaphragm Pumps

Widely used in paint spraying, chemical, ceramics, biotechnology, medical and food industries.



Model No.	Air Inlet	Paint Inlet	Paint Outlet	Capacity (ml)	Weight (Kg)	Operating Pressure (bar)	Air Consumption (m <sup>3</sup> /h)	Flow Rate (Lph)	Pressure Ratio
APA-15	1/4"	3/8"	1/4"	400	7	2-7	10	1080	1:1

0373

APA-15

Tech Sheet 20227

- Diaphragm life up to 18 million cycles
- Patented commutator construction
- 100% transmission efficiency
- Available for 4-6 spray guns simultaneously
- Suitable for conveying fluid and paint spraying
- Unique air circulation structure which provides stall-free life cycle



Model No.	Air Inlet	Paint Inlet	Paint Outlet	Capacity (ml)	Weight (Kg)	Operating Pressure (bar)	Air Consumption (m <sup>3</sup> /h)	Flow Rate (Lph)	Pressure Ratio
APA-25	1/4"	3/4"	3/4"	-	4.5	2-7	40	3060	1:1

0373

APA-25

Tech Sheet 20228

## Paint Mixing Tanks

- Used for premixed paint, excellent for larger spray areas
- Compact portable design quick release catches for paint tank
- 3m twin hose set permits easy movement
- Fluid pressure regulator included for accurate setting
- Includes pressure spray gun with 2mm nozzle



Model No.	Capacity (L)	Operating Pressure		Paint Outlet	Mixing Type
		psi	bar		
APR8312	10	20-30	1.4-2.1	1/4"	-

### 10L Paint Tank with Hose & Spray Gun

0373

APR8312

Tech Sheet 20543

**PORTWEST**



For Respiratory Protection  
see page 1755

## HVLP

High volume, low pressure (HVLP) spray guns are designed similar to conventional spray guns, the only difference being that unlike conventional spray guns, which operate under high pressure, HVLP spray guns operate at a much lower pressure.

- Offers a more accurate way of spray painting, with less chance of overspray
- Produces a more thick and consistent quality of paint finish
- Less pollution compared to conventional spray guns
- Consumes less materials down to minimising overspray

## LVLP

Low volume, low pressure (LVLP) spray guns are designed to work similar to the HVLP spray guns but to consume less air than the HVLP and used mainly in more intricate spraying on smaller areas. Used in auto painting and spraying of furniture, etc.

- More intricate spraying
- Low volume of air is utilised to finely atomize paint creating a very smooth finish
- Increased prevention of overspray and material wastage

## Spray Guns

- Stainless steel needle and nozzle to accommodate a variety of coatings
- Brass air cap and adjustable knob
- Includes adjustable fluid, pattern and air control
- Designed to provide equal atomisation and particle size for all kinds of surface painting
- Lightweight, ergonomic design and easy trigger pivot to reduce operator fatigue



Model No.	Type of Feed	Paint Capacity (cc)	Operating Pressure (Bar)	Pattern Width (mm)	Air Consumption (cfm)	Standard Nozzle (mm)
APH827A	Gravity	600	2.0-3.5	180-250	4.2-7.1	1.4

### HVLP, Gravity Feed

0373

APH827A

Tech Sheet 20575



Model No.	Type of Feed	Paint Capacity (cc)	Operating Pressure (Bar)	Pattern Width (mm)	Air Consumption (cfm)	Standard Nozzle (mm)
APR500	Gravity	600	2.0-3.5	180-250	3.0-3.9	1.5

### LVLP, Gravity Feed

0373

APR500

Tech Sheet 20577



Model No.	Type of Feed	Paint Capacity (cc)	Operating Pressure (Bar)	Pattern Width (mm)	Air Consumption (cfm)	Standard Nozzle (mm)
APR71	Pressure	-	3.0-4.0	180-250	3.5-6.4	1.5

### Gravity Feed

0373

APR71

Tech Sheet 20577



Model No.	Type of Feed	Paint Capacity (cc)	Operating Pressure (Bar)	Pattern Width (mm)	Air Consumption (cfm)	Standard Nozzle (mm)
APAS1005	Suction	1000	2.0-3.5	180-250	4.2-7.1	1.4

### HVLP, Suction Feed

0373

APAS1005

Tech Sheet 20576



Model No.	Type of Feed	Paint Capacity (cc)	Operating Pressure (Bar)	Pattern Width (mm)	Air Consumption (cfm)	Standard Nozzle (mm)
APR200S	Suction	1000	2.0-3.5	180-250	3.0-3.9	1.5

### LVLP, Suction Feed

0373

APR200S

Tech Sheet 20578



Model No.	Type of Feed	Paint Capacity (cc)	Operating Pressure (Bar)	Pattern Width (mm)	Air Consumption (cfm)	Standard Nozzle (mm)
AP100B	Suction	600	3.0-4.0	180-250	4.2-6.4	1.5

### Detailing, Suction Feed

0373

AP100B

Tech Sheet 20580

## Nozzles

0373	To Suit	Ø mm
APH827-N1.4	APH827A	1.4
APH827-N1.7	APH827A	1.7
APAS1005-N1.4	APAS1005	1.4
APAS1005-N1.7	APAS1005	1.7
APR500R200S-N1.5	APR500 & APR200S	1.5
APR71-N1.7	APR71	1.7



Nozzle Size (mm)	Application
1.3	Clearcoats
1.4 to 1.7	Basecoats
2.0 to 2.2	Primers

# SPRAY GUNS



## High Pressure Spray Gun

- High pressure spray gun
- Dual action trigger
- Adjustable spray pattern
- External mix nozzle
- 1/4" bayonet quick connect.



0088  
TOOL-763556

## Expert Gravity Feed Spray Gun

- High performance, well balanced, spray gun
- For use in automotive spraying
- Separate flow and pattern controls
- 125ml nylon cup
- 1.2mm nozzle
- 1/4" bayonet quick connect



0088  
TOOL-580420

## Suction Feed Spray Gun

- Suction feed spray gun
- Dual action trigger
- Adjustable spray pattern
- External 1.5mm mix nozzle
- 750cc capacity
- 1/4" bayonet quick connect



0088  
TOOL-196536

## Gravity Feed Spray Gun

- Gravity feed spray gun
- Separate flow and pattern controls
- Dual action trigger control
- 1.5mm nozzle
- 500ml nylon cup
- 1/4" bayonet quick connect



0088  
TOOL-783124

# PAINT SPRAY GUNS



## HVLP Spray Guns

PCL's HVLP suction spray gun utilises a precision engineered brass air cap, stainless steel fluid nozzle and needle which provide a premium quality paint finish. This newly developed 'compliant' spray gun offers the user high transfer efficiency, lower material consumption and is environmentally friendly.

- Suitable for water based paints
- 1.7mm fluid nozzle
- 1 litre aluminium cup

**Maximum Working Pressure:**  
50lb/in<sup>2</sup>



### Suction Spray Gun

7000  
SG01P

PCL's HVLP gravity spray gun utilises a precision engineered brass air cap, stainless steel fluid nozzle and needle which provide a premium quality paint finish. This newly developed 'compliant' spray gun offers the user high transfer efficiency, lower material consumption and is environmentally friendly.

- Suitable for water based paints
- 1.4mm fluid nozzle
- 0.6 litre plastic cup

**Maximum Working Pressure:**  
50lb/in<sup>2</sup>



### Gravity Spray Gun

7000  
SG02P

## Lite Air Tools

### Key Product Benefits:

- Ergonomic design for comfort,
- Lightweight materials
- Ready for immediate use
- Comes complete with cleaning brush and hose tail piece

### Key Product Features:

- Tank capacity: 750cc
- Operating pressure: 3 to 4 bar
- Air consumption: 4.2 to 7.1 cfm
- Nozzle size: 1.5mm
- Pattern width: 140 to 180mm
- Body and canister material: aluminium



### Lite Suction Spray Gun

7000  
SG01L

Tech Sheet 2172

### Key Product Benefits:

- Tank capacity: 600cc
- Operating pressure: 3 to 4 bar
- Air consumption: 4.2 to 7.1 cfm
- Nozzle size: 1.5mm
- Pattern width: 120 to 250mm
- Body and canister material: aluminium and plastic



### Lite Gravity Spray Gun

7000  
SG02L

Tech Sheet 2173



For **Ambersil Cleaning & Lubrication**  
see pages 1571-1575



# AIR TOOLS

## Impact Wrenches

**Features:**

- DYNA-PACT oil bath clutch
- One handed push button forward/reverse with four positive power settings
- Full power in reverse
- Compact and ergonomic with rubber handle
- 425ft-lbs (576Nm) of maximum torque in reverse

**Benefits:**

- Clutch delivers smooth operation and extreme durability
- Versatile and powerful tool ideal for all general repairs and maintenance applications



### 1/2" Super Duty

0219

CP734H

Tech Sheet 3071

**Features:**

- 3/4" impact wrench with ring retainer
- DYNA-PACT oil bath clutch
- Single handed reverse button with four power settings
- Comfortable handle grip

**Benefits:**

- General maintenance
- Smooth operation with DYNA-PACT clutch
- Comfortable use with low noise and vibration levels
- Good durability



### 3/4" Super Duty

0219

CP772H

Tech Sheet 60253

**Features:**

- Steel front cover and aluminium body
- One hand operation forward/reverse by either left or right handed users
- Easily adjustable for either right or left handed operation
- Three setting positions
- Length: 4.4" (112mm)
- Jumbo hammer

**Benefits:**

- Best power to weight ratio: 306ft-lbs (415Nm)
- Ultra compact
- Easy to use
- Durable



### 3/8" Compact

0219

CP7731

Tech Sheet 60195

**Features:**

- Steel front cover and aluminium body
- One hand operation forward/reverse by either left or right handed users
- Three setting positions
- Length: 4.4" (112mm)
- Jumbo hammer

**Benefits:**

- Best power to weight ratio: 450ft-lbs (610Nm)
- Ultra compact
- Easy to use
- Durable



### 1/2" Compact

0219

CP7732

Tech Sheet 60252

**Durable and Powerful:**

- Maximum torque: 1,250Nm in reverse
- Working torque: 102-786Nm
- Includes rechargeable torch

**Features:**

- 922ft-lbs (1,250Nm) of maximum torque in reverse
- Durable aluminium back housing
- Insulated and comfortable grip with rubber-injected composite housing
- Universal and durable twin hammer mechanism

**Benefits:**

- Maximise work efficiency with great power
- Most powerful 1/2" impact wrench in the range
- Extremely fast run down for quick work
- Reduced operator fatigue



### 1/2" Composite

0219

CP7748

Tech Sheet 60251

**Features:**

- 1" straight impact wrench with 6" extended anvil
- 1,920ft-lbs (2,600Nm) of maximum torque in reverse
- Pinless, closed, reinforced rocking dog impact mechanism
- Dual socket retention, hole and friction ring
- Ergonomic side handle
- Full teasing trigger
- Regulator with integrated forward/reverse, with three position power settings in both directions

**Benefits:**

- Highly efficient yet economical motor with durable reinforced clutch mechanism
- Durable impact wrench with great power for the toughest jobs on heavy vehicles



### 1" Heavy-duty

0219

CP7782-6

Tech Sheet 60196

# AIR TOOLS

## Drills

### Features:

- Compact low profile head to get in to confined space
- Reverse valve for easy directional change
- High performance gearing for extended durability

### Benefits:

- Compact angle head drill
- Operator control from start up through run down
- Ideal for drilling and screw driving in confined area



### 3/8" Angle Drill

0219

CP879

Tech Sheet 3074

### Features:

- Fast and efficient at 2,900rpm
- Industrial quality Jacob's chuck
- Ergonomic grip

### Benefits:

- Productivity and durability
- Maximise operator comfort
- Power suitable for many applications



### 3/8" Pistol Drill, Heavy-duty

0219

CP9285

Tech Sheet 3076

## Ratchet

### Features:

- 1/2" ratchet
- Compact head design
- Hardened gears

### Benefits:

- Good durability
- Easy grip reverse for simple directional changes



### 1/2" Ratchet

0219

CP886H

Tech Sheet 60202

## Riveters

### Features:

- Compact size and composite body
- 3/16" maximum capacity
- Heavy pulling: up to 1,900lbs (865kg)
- Low vibration and low noise level
- Includes: 3/32", 1/8", 5/32" and 3/16" (2.4, 3.2, 4 and 4.8mm) nose pieces

### Benefits:

- Broad applications coverage
- Durable, reliable and easy to service
- Maximise operator comfort



### 3/16" Riveter, Heavy-duty

0219

CP9883

Tech Sheet 3092

## Grinders

### Features:

- Keyless adjustable protective guard
- Aluminium alloy housing
- Helical bevel gear design
- 5" (125mm) wheel capacity
- M14 spindle thread
- 0.8hp (600W) governed motor
- Ergonomic side handle

### Benefits:

- Suitable for general maintenance applications
- Lightweight but rugged housing
- Durability and performance



### 5" Angle Grinder

0219

CP9121AR

Tech Sheet 60204

### Features:

- Powerful 0.8hp (600W) motor
- Adjustable protective guard and aluminium alloy housing
- Spiral bevel gears
- Ergonomic side handle

### Benefits:

- Excellent for weld preparation and smoothing, rust removal, deburring and blending of steel, cast iron and aluminium
- Lightweight but rugged housing
- Durability and performance



### 4" Angle Grinder, Heavy-duty

0219

CP9120CR

Tech Sheet 3089

### Features:

- Air riveter for general maintenance
- Compact size
- 3/16" maximum capacity
- For rivets in aluminium, copper and softer materials
- Heavy pulling: up to 2,200lbs (1,000kg)
- Transparent container with holes for quick release of rivet ends
- Includes nose pieces for rivets: 3/32", 1/8", 5/32" and 3/16" (2.4, 3.2, 4 and 4.8mm)

### Benefits:

- Simple construction for easy maintenance
- Great for trailer panels, number plates, and any type of panels maintenance



### General Purpose Riveter

0219

CP9882

Tech Sheet 60205

### Features:

- 3mm and 1/8" collets included
- Very low noise level – only 71dB(A)
- Good power/size ratio with 60,000rpm high free speed

### Benefits:

- Extremely easy to handle, quiet and lightweight
- Ideal for tight access application



### Compact Pencil Grinder

0219

CP9104Q

Tech Sheet 3084

### Features:

- Efficient and powerful 0.32hp (240W) motor
- Low noise level: 80dB(A)
- Easy access speed regulator
- Compact and ergonomic grip
- Rear exhaust
- 1/4" and 6mm collets included

### Benefits:

- Maximised operator comfort
- Performance and power
- Increased precision for best operator control
- Ideal for confined access applications



### Compact In-line Die Grinder

0219

CP9105QB

Tech Sheet 3086

# AIR TOOLS

## Sanders

**Features:**

- PSA sanding pad
- Insulated grip and lock-off throttle to prevent accidental start-ups
- Power regulator for precise control

**Benefits:**

- Excellent for blending and smoothing filler, feather edging and pre-paint preparation
- Operator comfort



### Dual Action Sander

0219  
CP870

Tech Sheet 3081

**Features:**

- Quick change belt replacement
- Adjustable sanding arm
- Handle exhaust and swivel air inlet
- Rubber moulded grip

**Benefits:**

- Excellent for paint removal, weld sanding, smoothing and rust removal in tight areas
- Operator comfort



### Belt Sander

0219  
CP9779

Tech Sheet 3083

## High Speed Cutter

**Features:**

- Wheel diameter 2.7/8"
- Adjustable speed regulator
- Safety lever to prevent accidental start up
- Rear exhaust

**Benefits:**

- Ideal for cutting through composite, sheet metal, bolts, etc.
- Precise and safe control



### High Speed Cutter, Standard Duty

0219  
CP874

Tech Sheet 3095

## Hammer Kit

**Features:**

- Heavy-duty pistol grip hammer
- Standard .401 round shank
- Internal muffler minimises exhaust sound
- Unique vibration damping
- Teasing trigger for slow start-up

**Benefits:**

- Maximise operator comfort and control
- Smooth operation
- Low vibrations to maximise productivity

**Kit Includes:**

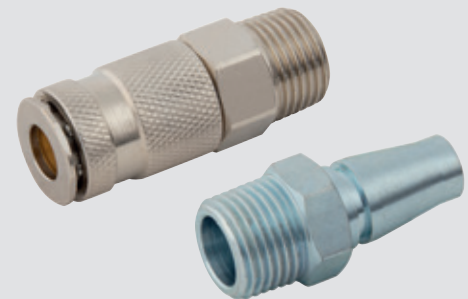
- Four chisels
- One posi-lock retainer
- Heavy-duty case



### Hammer Kit, Heavy-duty

0219  
CP7110 KIT

Tech Sheet 60207

For **BE Couplings**  
see pages **325-328**

## Swivel Connector

The MultiFlex swivel is an ingenious multidirectional connector. Connect your tool and the hose will stay in the ideal position however much you and the tool move around. The MultiFlex bends and rotates 360° in all directions while the hose stays straight. It takes the effort out of working in those cramped spaces, the hose feels almost weightless and it reduces hose wear.

### Features and Benefits

- Improved ergonomics; less strength is needed to move around tool and hose
- Reduced hose wear
- High flow capacity and low pressure drop
- Strong and durable for long lifetime



**Working Temperature:**  
-10°C to +70°C

**Maximum Working Pressure:**  
10 bar

### BSPP

0454	Thread
MFCB-02	1/8"
MFCB-04	1/4"
MFCB-06	3/8"
MFCB-08	1/2"
Tech Sheet 20443	

### NPT

0454	Thread
MFCN-02	1/8"
MFCN-04	1/4"
MFCN-06	3/8"
MFCN-08	1/2"
Tech Sheet 20443	



For **Hose Reels**  
see pages 1448-1453



## Blind Riveter 3/16" Capacity

### Features:

- Maximum rivet capacity: 3/16"
- Air pressure: 90 PSI
- Tool length and height: 271mm x 255mm
- Tool weight: 1.75kg
- Air inlet: 1/4" BSPP female
- Air consumption: 4.2 cfm
- Sound pressure: 73 dB (A)
- Sound power: 65 dB (A)
- Vibration level: 0.7 m/s<sup>2</sup>



0088

2017-0460

## Paint Spray Guns



Code	Flow	Bowl Capacity	Inlet	Hose ID
W-97	Suction	1000cc	1/4"	3/8"

Code	Average Air Consumption		Working Pressure cc		Nozzle mm
	CFM	Litres/min	psi	kg/cm <sup>2</sup>	
W-97	10	280	50-70	3.5-5.0	1.5

## High Pressure Spray Gun

0088

W-97

Type  
Gun & Bowl

Tech Sheet 20434

## Tool Balancers

Plastic coated steel wire.

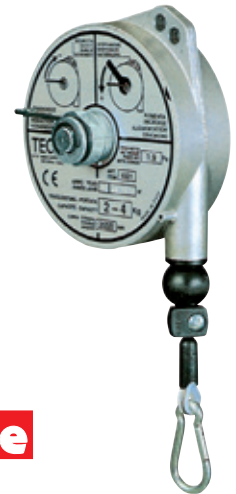


0088	Kg	Length Metres
2021-0209	0.6-1.5	1.6
2021-0217	1-2	1.6
2021-0225	1.5-3	1.5
2021-2030	3-5	0.9
Tech Sheet 20433		

A complete range of balancers, capabilities from 0.4 to 14kg, available stroke up to 2.5m. To eliminate labour, to cut down idle times, to improve work quality, to reduce hose and cable wear and to avoid both damage to people and tools. For either bench or assembly line jobs, applications ranging from small tools to industrial guns and multiple screwdrivers.

### Features:

- Stainless steel cable
- Auxiliary safety suspension
- Adjustable stroke-limiting device
- Adjustable capacity
- Polyamide thimble
- Rugged construction, cast aluminium body
- (Models 2-3) safety device against load dropping due to spring breakage (>3kg)
- Cable guide in anti-friction material



## Redashe

## For Tools & Weights from 0.4 to 14Kg

0122	Kg	Length Metres
M9311	0.4-1	1.6
M9312	1-2	1.6
M9313	2-3	1.6
M9320	1-2.5	2
M9321	2-4	2
M9322	4-6	2
M9323	6-8	2
M9336	2-4	2.5
M9337	4-6	2.5
M9338	6-8	2.5
M9339	8-10	2.5
M9340	10-14	2.5

## Ambersil



For Paint Marker Pens  
see page 1582

# Professional Tyre Inflator

## Features:

- Body: zinc alloy and aluminium, 1/4" female
- Hose: 1/4" x 33cm rubber hose with spring guard
- Chuck: 1/4" female x 6" long with PVC protector
- Chuck material: brass and zinc alloy
- Vibration resistant



### Pressure Range:

0-1050 kPa

0-150 PSI, 0-10 kg/cm<sup>2</sup>

0088

IG400

Tech Sheet 1948



## Tyre Inflators



### In-line

1305

TG-4



### Trigger

1305

TG-3

# TYRE INFLATION EQUIPMENT

## Jamec Auto 1000 Automatic Tyre Inflato



1470	Connector Style
11.06120S2	Single Clip-on

## Jamec TDR2000 Tyre Inflato , 500mm/20" Hose



1470	Similar To	Connector Style	Calibration
10.20000S	AFG4H03	Angled Twin Hold-on	0-138 PSI/ 0-960 kPa

## Jamec TDR2000 Tyre Inflato , 2.7 Metres/9' Hose



1470	Similar To	Connector Style	Calibration
10.20000S4	AFG4H03	Single Clip-on	0-138 PSI/ 0-960 kPa

## Jamec TDR Digital Tyre Inflator Twin Clip-on Connector, 2.7 Metres Hose



1470	Connector Style	Calibration
10.30120S2	Angled Twin Clip-on	+/- 2 PSI at 25 - 75 PSI

## Jamec Single Clip-on Connector, Open End



1470	Similar To	Connection	Thread
03.04470S	C08T73	Single Clip-on	1/4" BSPF

## Jamec Twin Hold-on Connector, Open End



1470	Similar To	Connector Style	Thread
03.04650S	C01A03	Angled Twin Connector	1/4" BSPF

## Jamec Twin Hold-on Connector, Closed End



1470	Similar To	Connector Style	Thread
03.04720S	C01B03	Angled Twin Connector	1/4" BSPF

## Jamec Twin Clip-on Connector, Open End



1470	Valve Connection Type	Style
03.0435NS0S	Twin Clip-on	Open Ends

## Jamec Twin Clip-on Connector, Closed End



1470	Valve Connection Type	Style
03.0435N0S	Twin Clip-on	Closed Ends

# TYRE INFLATION EQUIPMENT

## Car Tyre Inflator

 **Maximum Working Pressure:**  
12 bar



### With Clamping Nipple, 1/4" BSPP Inlet

1307	Gauge Ø mm
150120-134	63
150130-134	80

Tech Sheet 20437



 **Maximum Working Pressure:**  
12 bar

### With Twin Connector, 1/4" BSPP Inlet

1307	Gauge Ø mm
150123-134	63
150131-134	80

Tech Sheet 20437

#### QT Connector for airtight connection

- New cars are fitted with TPMS valves, which requires precise air pressure in the tyre and here the QT Connector is the right solution. It is light and simple to connect and is completely airtight even at 9 bar.
- QT Connector has been tested for over 100,000 activations and is still completely airtight and fully functional.
- You can easily and simply connect the QT Connector to the valve with one push. Pull back the locking ring to release it again.



### Tyre Inflator with QT Connecto

1307	Gauge Ø mm
151120-134	63

#### Precise - Air Boy® eXact

The high measuring accuracy - 0.01 bar combined with the airtight QT-Connector makes the Air Boy® eXact the perfect choice for inflating tyres with TPMS valves.

#### Durable - Air Boy® eXact

The electronics are protected from impact and the strong construction withstands a free fall from even 2 metres on a concrete floor. Thoroughly tested and approved by Force Technology. Significantly better than the stringent DS/EN 12645:2014 standard for inflating guns. IP65 Approved.

#### Ergonomic - Air Boy® eXact

The display is easy to read with large numbers and backlighting. Optimal in both left and right hand. Easy to hang from your belt with the inbuilt "eye".



#### Calibrated - Air Boy® eXact

All guns are individually tested and come together with a calibration certificate. The Air Boy® eXact measures tyre pressures in the range of 0.2 to 10 bar with a resolution of 0.01 bar.

### Air Boy® eXact Digital Inflating Gun with QT Connecto , 1/4"

1307	Gauge
156100-134	Digital

The QT connector is extremely airtight when connected. No air is leaking from the QT connector - even at 9 bar/130 PSI. A tight connection is a must for an accurate pressure reading and with TPMS sensors on all new cars an accurate measurement is more important than ever.

 **Working Temperature:**  
-20°C to +60°C

 **Maximum Working Pressure:**  
16 bar, 232 PSI



#### QT Connector

1307	Connection
116002	Internal 1/4"
116021	3/16" (5.5mm) Hose
116022	1/4" (6.5mm) Hose

# TYRE INFLATION EQUIPMENT



PCL's handheld tyre inflation products are recognised internationally as the brand to buy, due to their reputation for speed, safety and ease of use and readability.

## AIRFORCE MK4 Air Line Gauges (Open End)

A new and improved version of the highly regarded MK3 tyre inflator.

- Open-end: unvalved (air straight through)
- Hold-on: hold onto valve to inflate
- Clip-on: clip slides down to hold on to valve to inflate
- Supplied with a certificate of calibration



Inflation pressures  
up to 138 PSI / 9.6 bar

### MK4

7001	Hose Length	Connector
AFG4H03	0.53m (21")	Twin Hold-on Connector
AFG4H04	0.53m (21")	Single Clip-on Connector
Tech Sheet 60250		

### MK4 Tyre Shop

Inflation pressures  
up to 138 PSI / 9.6 bar

7001	Hose Length	Connector
AFG4H05	1.8m (6ft)	Twin Clip-on Connector
AFG4H06	2.7m (9ft)	Twin Clip-on Connector
AFG4H061	2.7m (9ft)	Single Clip-on Connector
Tech Sheet 60250		

### Forecourt

Inflation pressures  
up to 138 PSI / 9.6 bar

7001	Hose Length	Connector
AFG4H031	0.36m (14")	Short Stem Twin Hold-on

### Truck

Inflation pressures  
up to 174 PSI / 12 bar

7001	Hose Length	Connector
AFG5H36	3.6m (12ft)	Twin Clip-on
Tech Sheet 60250		

### High Pressure

Inflation pressures  
up to 300 PSI / 21 bar

7001	Hose Length	Connector
AFG6H04	1.8m (6ft)	Single Clip-on

## Analogue AirForce II Handheld Tyre Inflator

Featuring a user-friendly dial display for fast, trouble-free tyre inflation, the AirForce II, with its high performance mechanical dial, boasts industry-standard EC Directive BS EN12645:2014 approvals and certifications for accuracy, reliability and robustness.

Inflation pressures  
up to 170 PSI / 12 bar



7001	Hose Length	Connector
AFG1H08	1.8m (6ft)	Euro Clip-on
AFG1H03	0.53m (21")	Twin Hold-on

## Digital ACCURA 1 Handheld Tyre Inflator

PCL's ACCURA 1 broke the mould for handheld units, merging ease of use and readability with rapid, safe and cost-effective tyre inflation

Inflation pressures  
up to 174 PSI / 12 bar



7001	Hose Length	Connector	Calibration
DAC1C08	1.8m (6ft)	Euro Clip-on	0-12 bar
DAC1A06	2.7m (9ft)	Twin Clip-on	0-174 PSI
DAC1A03	0.53m (21")	Twin Hold-on	0-174 PSI

## ACCURA MK4 Digital Tyre Inflator

The ACCURA MK4 tyre inflator marries the ruggedness of a metal analogue inflator with the lightness, accuracy and ease of use of a digital gauge.

### Features:

- Extremely robust aluminium body with protective rubber bumper
- Permanently backlit in use, auto off after 25 seconds no-use (easy to read in dark workshops or at night)
- Three units of calibration toggle as standard (PSI, bar and kPa)
- The lightest digital inflator on the market
- Higher pressure range for multiple applications
- Individually tested and certified against national approved gauge

Inflation pressures  
up to 250 PSI / 17.2 bar / 1723 kPa



7001	Connection	Hose Length
DAC403	Twin Hold-on	0.53m (21")
DAC404	Single Clip-on	0.53m (21")
DAC405	Twin Clip-on	1.8m (6ft)
DAC406	Twin Clip-on	2.7m (9ft)
DAC4061	Single Clip-on	2.7m (9ft)
DAC436	Twin Clip-on	3.6m (12ft)

## Alloy Tyre Inflator

This general purpose tyre inflator, with its durable, alloy body and rubber protected gauge, is ideal for lower volume and non-commercial applications.



7001	Hose Length	Connector
ADTG4	0.85m	Euro Clip-on

# TYRE INFLATION EQUIPMENT

## Tyre Valve Connectors

- Open end: unvalved (air straight through)
- Closed end: valved (operates when valve opens tyre valve)
- Hold-on: hold onto valve to inflate
- Clip-on: clip slides down to hold onto valve to inflate

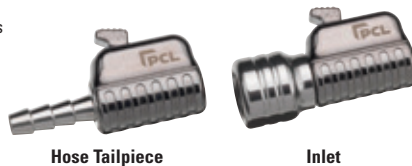


7001	Description
CO1A03	Twin Hold-on Connector (Open End)
CO1B03	Twin Hold-on Connector (Closed End)
CO3A03	Twin Clip-on Connector (Open End)
CO3B03	Twin Clip-on Connector (Closed End)
CO8E72	Euro Style Single Clip-on Connector (Open End) for 4.75mm (3/16") Bore Hose

## Straight, Single Clip-on Air Connectors

### Features and Benefits

- Once the new PCL Air Connector is on, it stays on - no air leakage
- Simple but effective thumb push button - quickly releases the tyre valve, reducing non-value added time
- 360° swivel motion
- Simply turn clockwise to achieve even more grip
- Open end connector
- Suitable for use in tyre shops



7001	Thread Size
CH2K01	7.9mm, 5/16" Bore Hose
CH2H01	6.35mm, 1/4" Bore Hose
CH2A01	1/4" BSPP Inlet

## Angled, Single Clip-on Air Connectors



7001	Thread Size
CH4K01	7.9mm, 5/16" Bore Hose
CH4H01	6.35mm, 1/4" Bore Hose
CH4A01	1/4" BSPP Inlet

## Tyre Pressure Gauges

Includes integral pocket clip and removable protective cap.

- Complies to BS EN12645:2014
- Accuracy +/- 2 PSI



### Pocket Service Type, Dual Calibrated

7001	Calibration	Resolution
TPG4H01	10-120 PSI / 0.8-8.2 bar	2 PSI / 0.2 bar

Includes integral pocket clip and removable protective cap.

- Complies to BS EN12645:2014
- Accuracy +/- 2 PSI

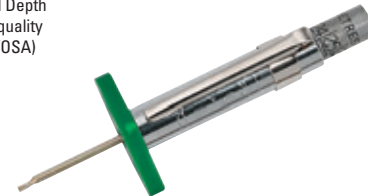


### Pocket Type, Angled Head, Dual Calibrated

7001	Calibration	Resolution
TPG3H07	10-120 PSI / 0.8-8.2 bar	2 PSI / 0.2 bar
TPG1H07	6-50 PSI / 0.5-3.4 bar	1 PSI / 0.1 bar

## Tread Depth Gauge

PCL's "Made in Sheffield" tyre Tread Depth Gauge is manufactured to stringent quality standards and is DVSA (previously VOSA) MOT centre approved.



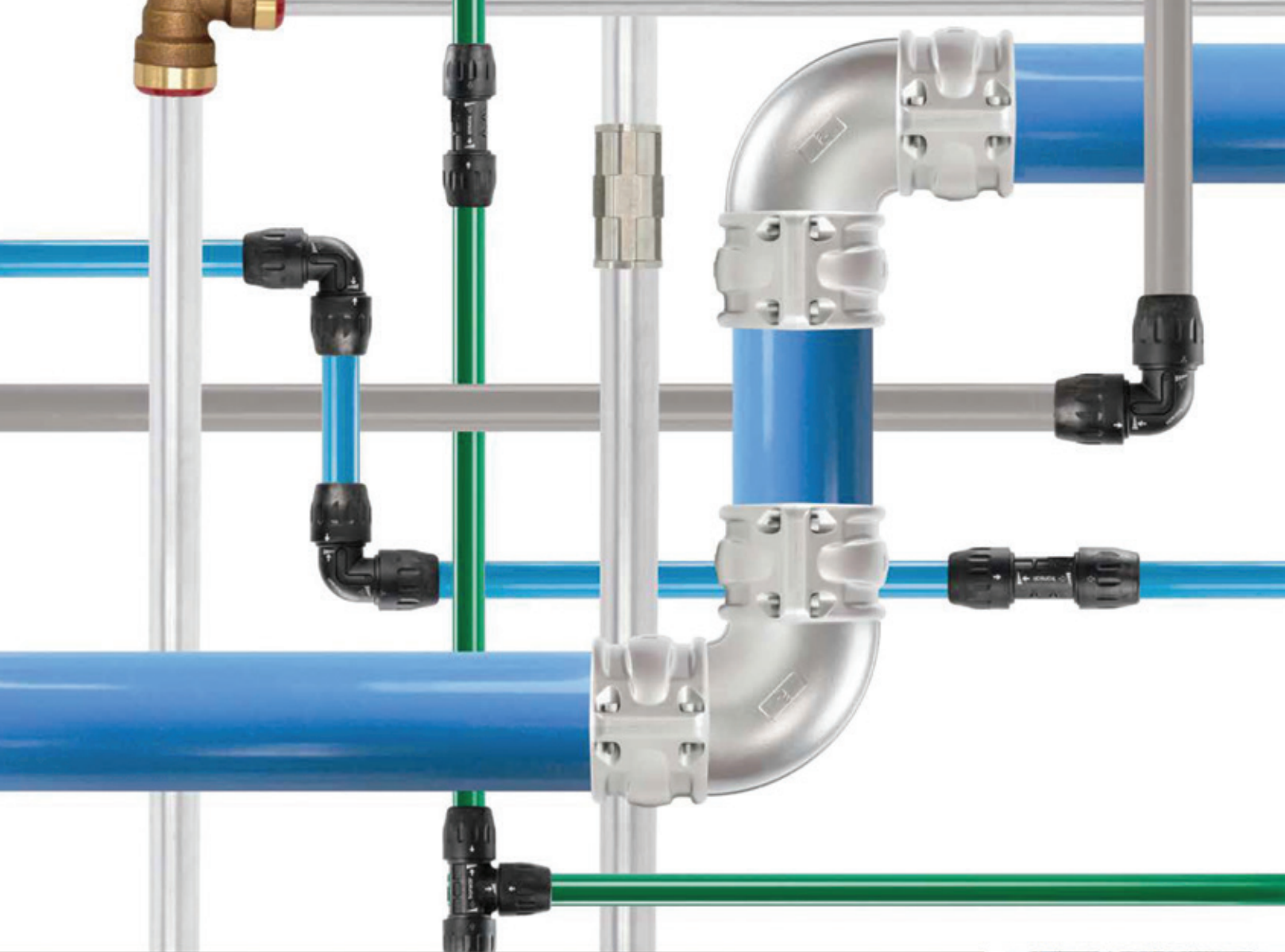
7001	Description
TDG16C05	1.6mm Marking

## PCL Dial Type Tyre Gauge

Designed for simplicity and convenience of use, the dial type "TyreCheck" pressure gauge is the professional's choice of dial pressure gauge for fast, clear and accurate readings.



7001	Description
DPG1H08	0-170 PSI & 0-12 bar, Euro Clip-on Connector



# Transair: Modular Pipe Systems

- Lower pressure drop
- Air quality class 1-1-1
- Safest connection technologies
- Labour and installation time reduced
- Services to support your project



ENGINEERING YOUR SUCCESS.